



Kenai Spur Highway Rehabilitation

Sports Lake Road to Swires Road

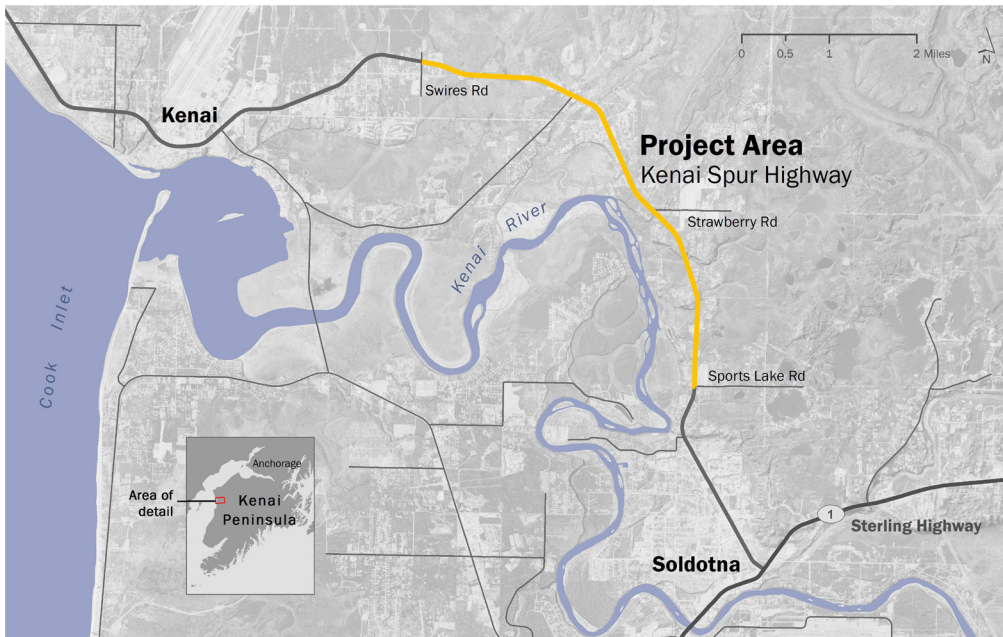
Project Fact Sheet

Project Number: # CFHWY00253

Project Overview

The Alaska Department of Transportation and Public Facilities (DOT&PF) is rehabilitating 5.7 miles of the Kenai Spur Highway, from Sports Lake Road to Swires Road, to improve safety and capacity.

As the primary link between the communities of Kenai and Soldotna, this two-lane, undivided highway experiences higher crash rates than the statewide average and has the second highest rate of moose collisions in Alaska. Therefore, this project is a priority for both the Kenai Peninsula Borough and the State of Alaska.



Project Background

The project corridor is part of a 39-mile highway that connects Soldotna with Kenai and Nikiski. The Kenai Spur Highway was constructed in 1956. In 2004, a 10-foot shared use pathway was constructed on the west side of the Highway.

In 2011, the DOT&PF received a \$20 million appropriation of state funding from the legislature for the project. From 2012 through early 2014, DOT&PF conducted reconnaissance engineering to develop and evaluate alternatives. The Cities of Kenai and Soldotna have expressed their preference for a five-lane highway, as it would best meet needs long-term. However, the project cost was greater than state funding appropriated. Therefore DOT&PF broke the project into two phases and pursued federal funding for Phase 2. Rehabilitation plans for the Kenai Spur project include:

- » reconstructing and widening to a five-lane highway
- » moose mitigation measures
- » replacing culverts and guardrails
- » minor pathway rerouting
- » modifying or moving existing driveways



Kenai Spur Highway Rehabilitation

Sports Lake Road to Swires Road

Project Fact Sheet

Project Number: # CFHWY00253

Contact



If you would like to request additional information or share your ideas, please contact:

Alex Read, P.E.
Project Manager, DOT&PF
alex.read@alaska.gov
907-269-0641



What's Happening Now

Design: Design for Phase 2 is 95% complete, utility design is ongoing.

Public Involvement: Mailers will be sent out prior to 2023 construction.

Phased Plan

DOT&PF has separated its efforts into two phases.

Phase 1: Construction completed in 2020.

Phase 2: Design is nearly complete. ROW acquisitions are complete. Construction will begin in 2023.