



Kenai Spur Highway Rehabilitation

Sports Lake Road to Swires Road

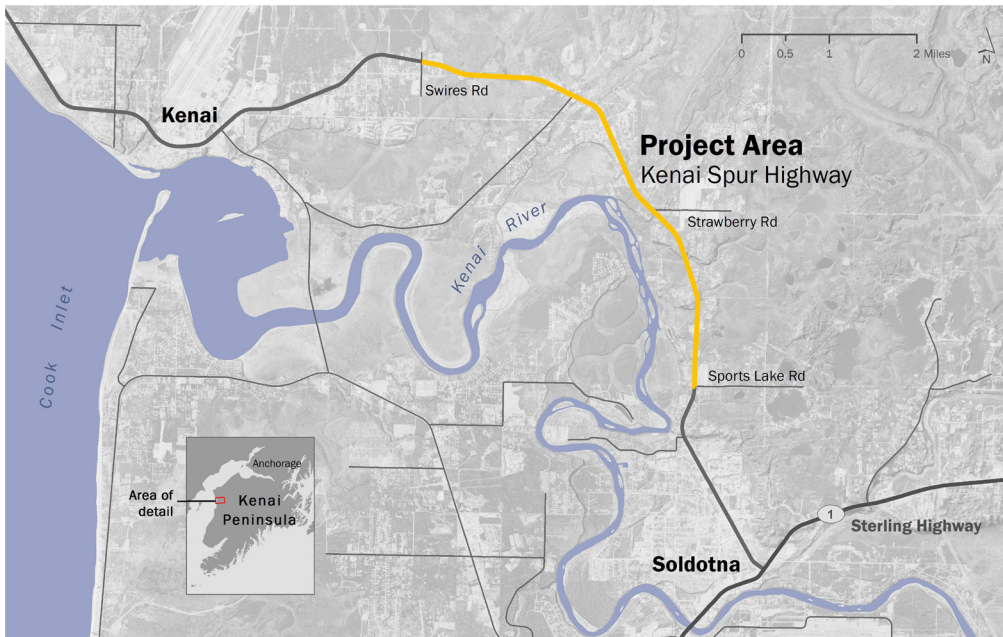
Project Fact Sheet

Project Number: # 54594

Project Overview

The Alaska Department of Transportation and Public Facilities (DOT&PF) is rehabilitating 5.7 miles of the Kenai Spur Highway, from Sports Lake Road to Swires Road, to improve safety and capacity.

As the primary link between the communities of Kenai and Soldotna, this two-lane, undivided highway experiences higher crash rates than the statewide average and has the second highest rate of moose collisions in Alaska. Therefore, this project is a priority for both the Kenai Peninsula Borough and the State of Alaska.



Project Background

The project corridor is part of a 39-mile highway that connects Soldotna with Kenai and Nikiski. The Kenai Spur Highway was constructed in 1956. In 2004, a 10-foot shared use pathway was constructed on the west side of the Highway.

In 2011, the DOT&PF received a \$20 million appropriation from the legislature for the project. From 2012 through early 2014, DOT&PF conducted reconnaissance engineering to develop and evaluate alternatives. The Cities of Kenai and Soldotna have expressed their preference for a five-lane highway, as it would best meet needs long-term. However, state funding was not enough to cover the cost of the desired improvements. Therefore DOT&PF broke the project into two phases and pursued federal funding for Phase 2. Rehabilitation plans for the Kenai Spur project include:

- » reconstructing and widening to a five-lane highway
- » moose mitigation measures
- » replacing culverts and guardrails
- » minor pathway rerouting
- » modifying or moving existing driveways



Kenai Spur Highway Rehabilitation

Sports Lake Road to Swires Road

Project Fact Sheet

Project Number: # 54594

Contact



If you would like to request additional information or share your ideas, please contact:

Christina Huber, P.E.
 Project Manager, DOT&PF
 Christina.Huber@alaska.gov
 907-269-0572



Katherine Wood
 Public Involvement, HDR
 Katherine.Wood@hdrinc.com
 907-644-2000

What's Happening Now

Design: Five-lane concept completed at a 100% design level for phase 1 and a 90% design level for phase 2.

Environmental: The Environmental Document was completed in February 2018.

Public Involvement: The project team will provide the next update via direct mailers and website updates during the summer of 2020.

Purpose of a Phased Plan

DOT&PF has separated its efforts into two phases.

Phase 1: DOT&PF has completed the design and ROW acquisition for the five-lane concept in Phase 1. Construction is scheduled to complete in summer 2020.

Phase 2: The DOT&PF design is 90% complete for Phase 2. The ROW acquisitions are 95% complete and construction is expected to begin in 2020.

