



# Glenn Hwy Incident Management Traffic Accommodations Project No: CFHWY01033/0A16056

## Project Scope

The Alaska Department of Transportation and Public Facilities (DOT&PF), in cooperation with the Federal Highway Administration (FHWA), is proposing to install permanent median crossovers at approximately 30 locations on the Glenn Highway between Airport Heights Drive and the Knik River. The purpose of the project is to improve DOT&PF's ability to maintain traffic flow on the highway in the event incidents or construction requires closing bridges or parts of the highway. Median crossovers are areas of the highway median that have been filled and paved, allowing traffic to be routed over the crossover and detoured onto the opposite side of the highway.

Median crossovers were identified as a necessary incident management traffic accommodation feature by the "Emergency Traffic Control Guidelines" developed as part of the "AMATS Glenn Highway Integrated Corridor Management Study" in 2019. That study developed temporary traffic control plans for a closure of each segment of Glenn Highway in Anchorage in the event of an incident. In most locations, highway traffic could be diverted on to other existing roads, but at a significantly reduced capacity. Median crossovers will enable DOT&PF to reconfigure the highway to maintain some traffic flow, regardless of which side of the highway is closed. This will maximize overall road capacity and help reduce congestion impacts on motorists. The crossovers will be especially valuable in locations where alternate routes do not exist, such as between Eklutna and the Knik River.

The crossovers are to support incident management or construction traffic control, not to facilitate u-turns or other use on a day-to-day basis. Removable barriers will be installed to prevent unintended use and/or errant vehicles from crossing the highway median. Access/ openings will be provided to allow u-turns by emergency vehicles.

Median crossovers are planned on each side of interchanges between Airport Heights Drive and Eklutna, the south side of the Old Glenn Highway interchange, both sides of Ship Creek, and south of the Eagle River weigh stations. The median crossovers will be approximately 800 feet long. The type and configuration of removable barriers will be determined during design.

Construction will occur concurrently with the Glenn Highway: Airport Heights to Parks Highway Rehabilitation, Project No. CFHWY00545/0001656.

## Status and Schedule

Field survey is largely complete and design is underway. The project is expected to be broken into three stages to match available funding with the first stage anticipated to be under construction in 2026.

**For more information, visit the project website or contact:**

Joann Mitchell, PE  
Kinney Engineering, LLC  
(907) 344-7590  
JoannMitchell@KinneyEng.com

Chris Bentz, PE  
DOT&PF Project Manager  
(907) 707-1912  
Chris.Bentz@alaska.gov

<https://dot.alaska.gov/creg/glenn/>



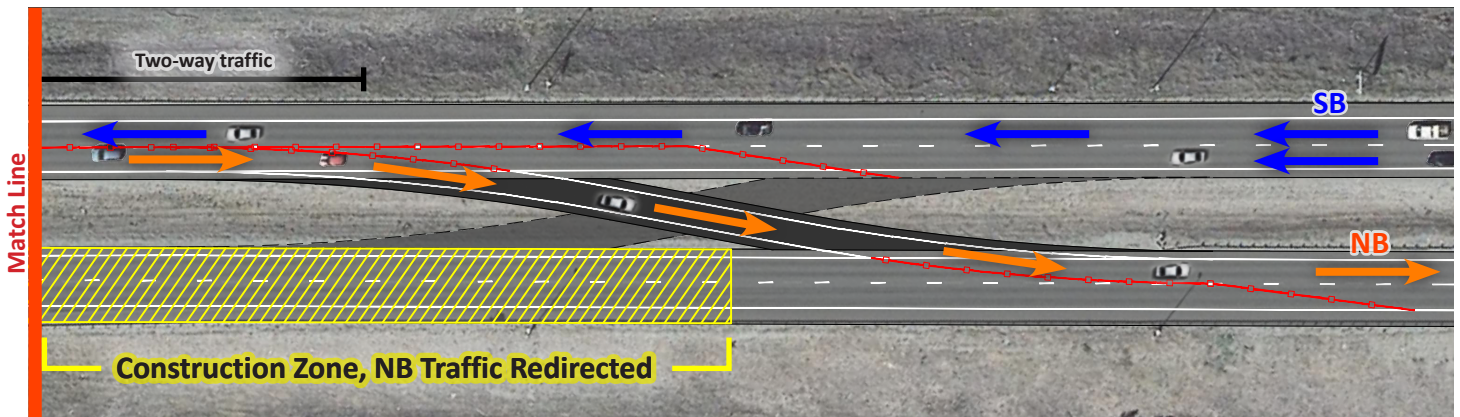
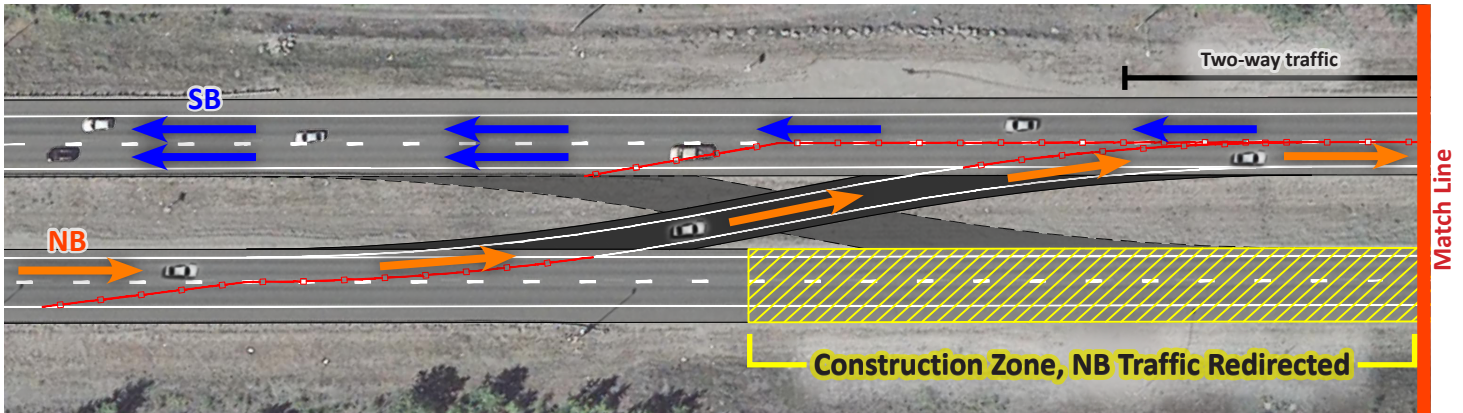
Scan for Website

# FACT SHEET

Glenn Hwy Incident Management Traffic Accommodations  
Project No: CFHWY01033/0A16056



## Median Crossover Design:



## Median Crossover Example:



### Uses/Benefits:

- Can be constructed as a one or two-lane crossover
- Reversible use for detours on either side of highway
- Provides U-turn space exclusively for emergency vehicles