



Glenn Hwy: Airport Heights to Parks Highway Rehabilitation Project No: CFHWY00545/0001656

Project Scope

The Alaska Department of Transportation and Public Facilities (DOT&PF), in cooperation with the Federal Highway Administration (FHWA), is proposing to rehabilitate the Glenn Highway from Airport Heights Drive to the Parks Highway Interchange. The purpose of the project is to extend the life of the pavement and provide safety and capacity improvements at select interchange on-ramps. On-ramps can cause congestion when traffic entering the highway from the ramp doesn't have time to reach highway speeds and find appropriate gaps for merging.

The following on-ramps will be lengthened and reconfigured from a tapered merge to a parallel merge/acceleration lanes:

JBER	Southbound and Northbound
North Eagle River	Southbound
South Birchwood	Southbound and Northbound
North Birchwood	Southbound and Northbound
South Peters Creek	Southbound and Northbound
North Peters Creek	Southbound and Northbound
Mirror Lake	Southbound
Eklutna	Southbound and Northbound
Old Glenn	Southbound

Additional Improvements

In addition to the on-ramp improvements, other work may include:

- » Resurfacing
- » Repairing pavement structural section
- » Repairing or replacing culverts and other drainage improvements
- » Replacing damaged roadway signs, delineators, and lighting
- » Extending, repairing, or replacing guardrails
- » Pathway repairs
- » Bridge work/repairs

Construction will occur concurrently with the Glenn Highway Incident Management Traffic Accommodations, Project No. CFHWY01033/OA16056.

Status and Schedule

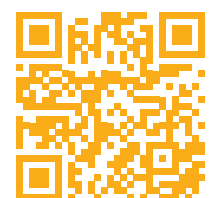
Field survey and culvert inspections are largely complete, and geotechnical drilling will begin soon. The project will be divided into three stages due to availability of funding and to reduce construction impacts to the traveling public. The first stage is anticipated to be ready for construction in 2026.

For more information, visit the project website or contact:

Joann Mitchell, PE
Kinney Engineering, LLC
(907) 344-7590
JoannMitchell@KinneyEng.com

Chris Bentz, PE
DOT&PF Project Manager
(907) 707-1912
Chris.Bentz@alaska.gov

<https://dot.alaska.gov/creg/glenn/>



Scan for Website

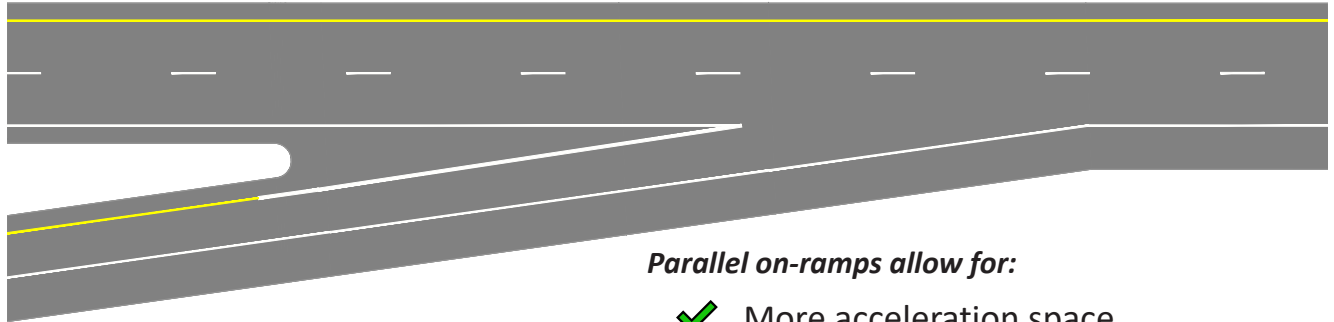
FACT SHEET

Glenn Hwy: Airport Heights to Parks Highway Rehabilitation
 Project No: CFHWY00545/0001656



At select locations, we're going from this...

TAPERED
RAMPS

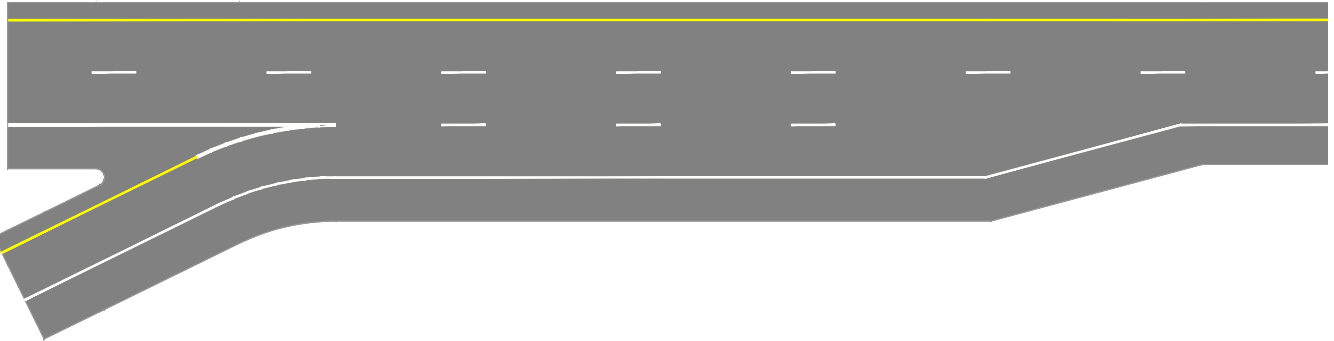


Parallel on-ramps allow for:

- ✓ More acceleration space
- ✓ Better positioning of vehicles into gaps
- ✓ Increased safety
- ✓ Increased capacity

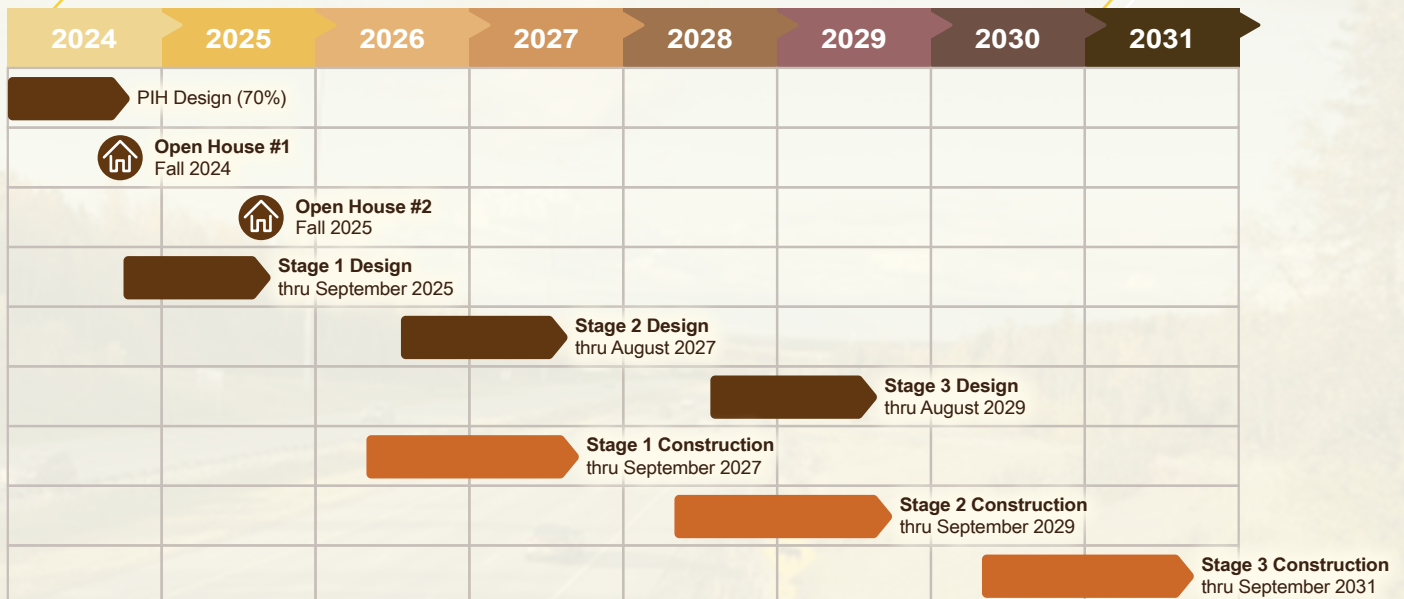
...To this!

PARALLEL
RAMPS



PROJECT SCHEDULE

AS OF NOVEMBER 2024



*Note: Construction schedule is estimated.



Glenn Hwy Incident Management Traffic Accommodations Project No: CFHWY01033/0A16056

Project Scope

The Alaska Department of Transportation and Public Facilities (DOT&PF), in cooperation with the Federal Highway Administration (FHWA), is proposing to install permanent median crossovers at approximately 30 locations on the Glenn Highway between Airport Heights Drive and the Knik River. The purpose of the project is to improve DOT&PF's ability to maintain traffic flow on the highway in the event incidents or construction requires closing bridges or parts of the highway. Median crossovers are areas of the highway median that have been filled and paved, allowing traffic to be routed over the crossover and detoured onto the opposite side of the highway.

Median crossovers were identified as a necessary incident management traffic accommodation feature by the "Emergency Traffic Control Guidelines" developed as part of the "AMATS Glenn Highway Integrated Corridor Management Study" in 2019. That study developed temporary traffic control plans for a closure of each segment of Glenn Highway in Anchorage in the event of an incident. In most locations, highway traffic could be diverted on to other existing roads, but at a significantly reduced capacity. Median crossovers will enable DOT&PF to reconfigure the highway to maintain some traffic flow, regardless of which side of the highway is closed. This will maximize overall road capacity and help reduce congestion impacts on motorists. The crossovers will be especially valuable in locations where alternate routes do not exist, such as between Eklutna and the Knik River.

The crossovers are to support incident management or construction traffic control, not to facilitate u-turns or other use on a day-to-day basis. Removable barriers will be installed to prevent unintended use and/or errant vehicles from crossing the highway median. Access/ openings will be provided to allow u-turns by emergency vehicles.

Median crossovers are planned on each side of interchanges between Airport Heights Drive and Eklutna, the south side of the Old Glenn Highway interchange, both sides of Ship Creek, and south of the Eagle River weigh stations. The median crossovers will be approximately 800 feet long. The type and configuration of removable barriers will be determined during design.

Construction will occur concurrently with the Glenn Highway: Airport Heights to Parks Highway Rehabilitation, Project No. CFHWY00545/0001656.

Status and Schedule

Field survey is largely complete and design is underway. The project is expected to be broken into three stages to match available funding with the first stage anticipated to be under construction in 2026.

For more information, visit the project website or contact:

Joann Mitchell, PE
Kinney Engineering, LLC
(907) 344-7590
JoannMitchell@KinneyEng.com

Chris Bentz, PE
DOT&PF Project Manager
(907) 707-1912
Chris.Bentz@alaska.gov

<https://dot.alaska.gov/creg/glenn/>



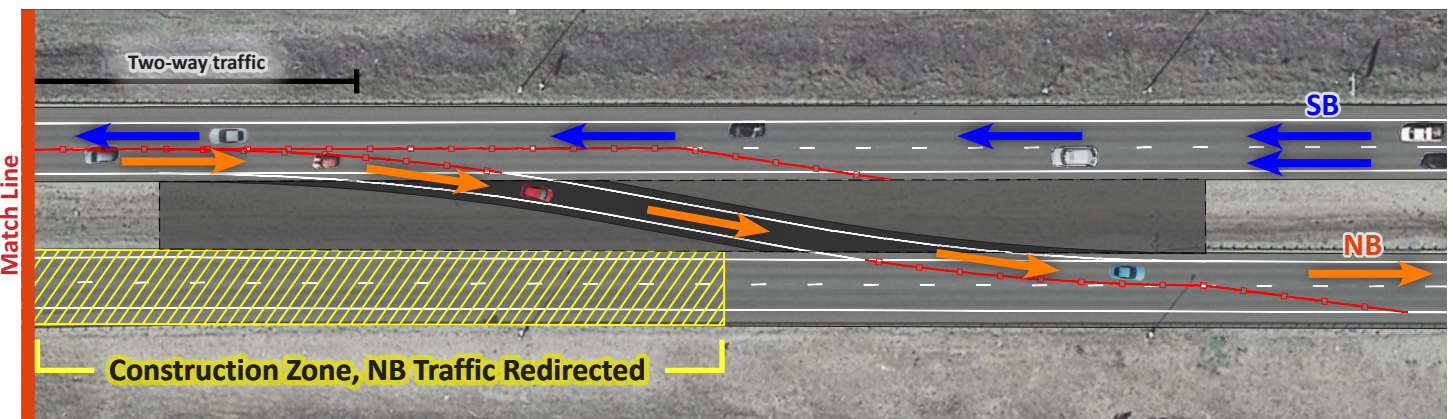
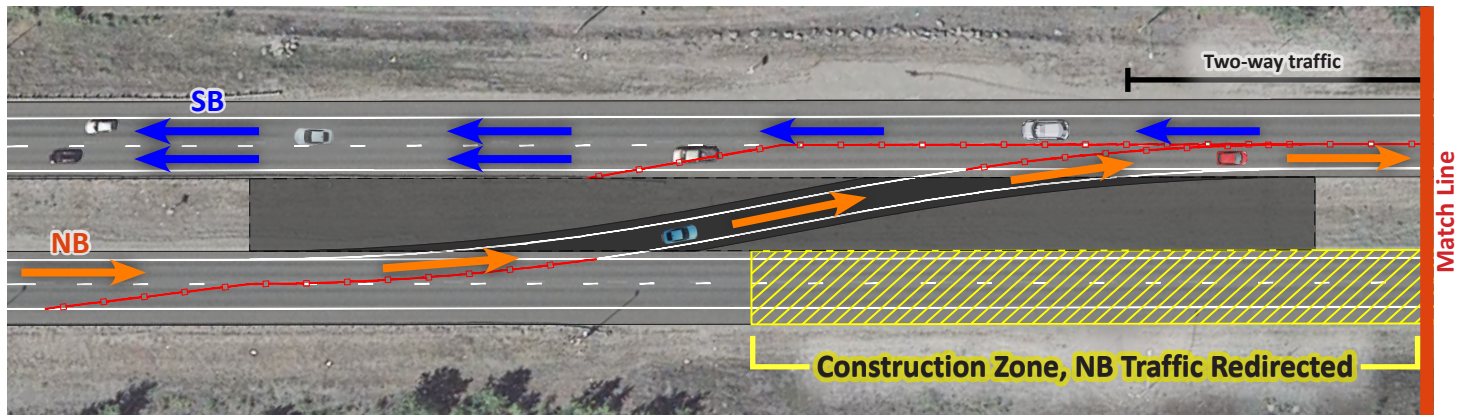
Scan for Website

FACT SHEET

Glenn Hwy Incident Management Traffic Accommodations
Project No: CFHWY01033/0A16056



Median Crossover Design:



Median Crossover Example:



Uses/Benefits:

- Can be constructed as a one or two-lane crossover
- Reversible use for detours on either side of highway
- Provides U-turn space exclusively for emergency vehicles