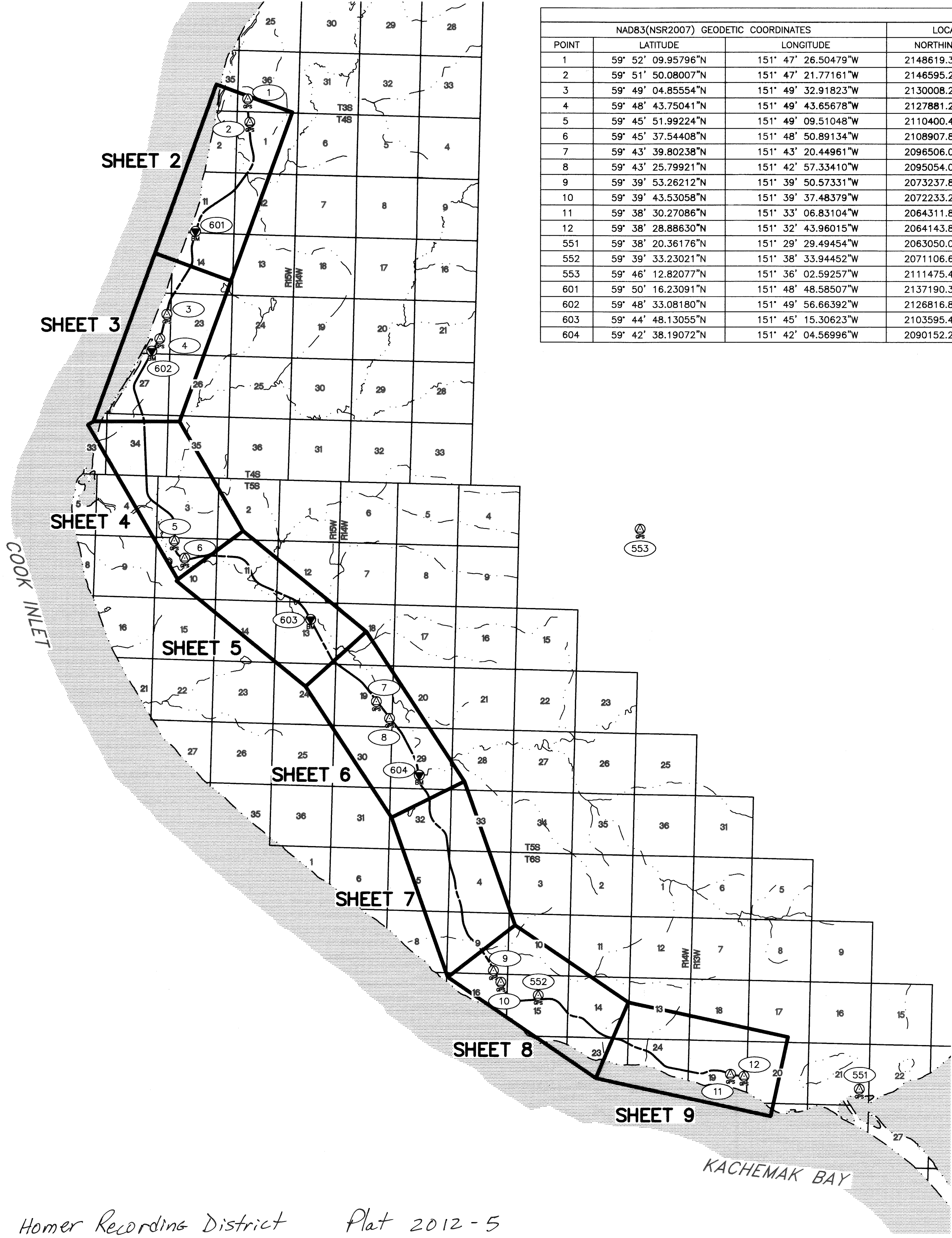


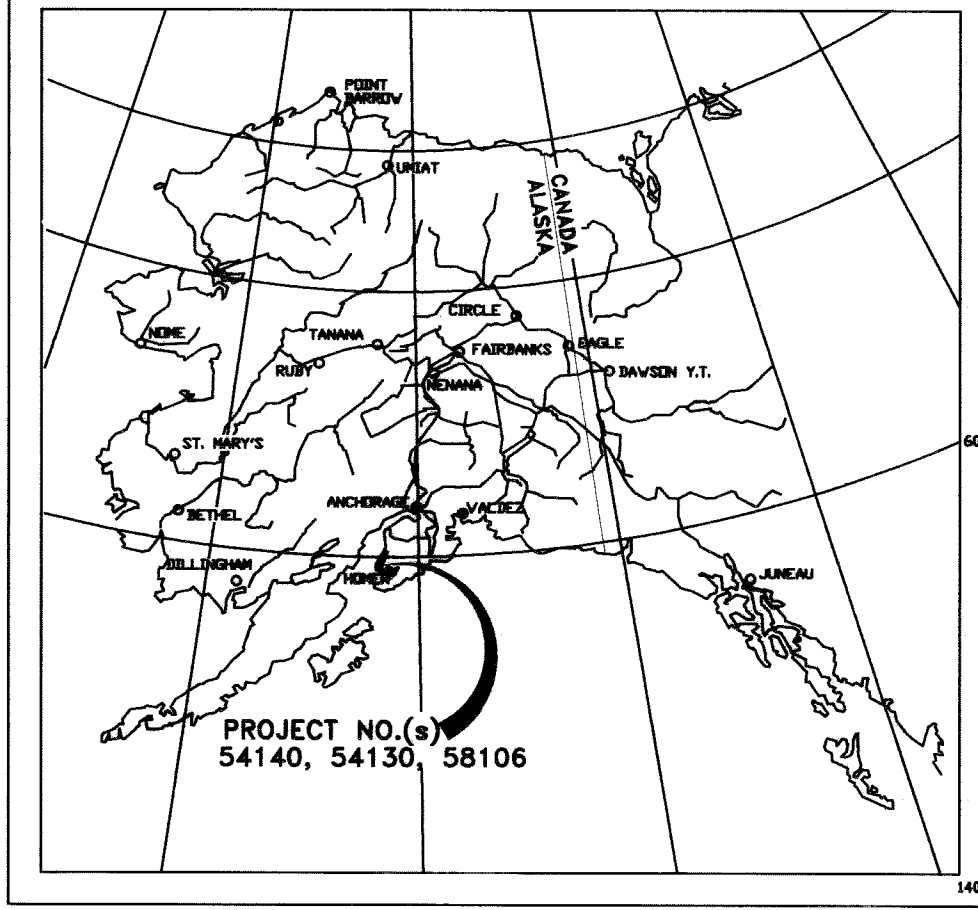
PROJECT: 060000/SURVEY/ACAD DRAWING NAME: SD-XXX.dwg PLOTTED: xxx SCRIPT FILE FOR THIS SHEET: SD-XXX.dwg



Homer Recording District Plat 2012-5

HORIZONTAL AND VERTICAL CONTROL									
NAD83(NSR2007) GEODETIC COORDINATES			LOCAL COORDINATES		ELLIPSOID HEIGHT	ORTHO HEIGHT	NAVD88 ELEVATION	DESCRIPTION	
POINT	LATITUDE	LONGITUDE	NORTHING	EASTING					
1	59° 52' 09.95796"N	151° 47' 26.50479"W	2148619.3370	1311361.6620	241.96	215.22		Set BC/SSROD: AKDOT MP 149.6 2012	
2	59° 51' 50.08007"N	151° 47' 21.77161"W	2146595.2420	1311548.7110	255.91	229.08		Set BC/SSROD: AKDOT MP 150.0 2012	
3	59° 49' 04.85554"N	151° 49' 32.91823"W	2130008.2170	1304392.2630	269.38	241.84		Set BC/SSROD: AKDOT MP 153.8 2012	
4	59° 48' 43.75041"N	151° 49' 43.65678"W	2127881.2650	1303784.2520	309.41	281.77		Set BC/SSROD: AKDOT MP 154.2 2012	
5	59° 45' 51.99224"N	151° 49' 09.51048"W	2110400.4310	1305051.3970	205.18	176.48		Set BC/SSROD: AKDOT MP 158.0 2012	
6	59° 45' 37.54408"N	151° 48' 50.89134"W	2108907.8810	1305964.4980	205.70	176.89		Set BC/SSROD: AKDOT MP 158.3 2012	
7	59° 43' 39.80238"N	151° 43' 20.44961"W	2096506.0680	1322573.7060	280.65	250.81		Set BC/SSROD: AKDOT MP 162.8 2012	
8	59° 43' 25.79921"N	151° 42' 57.33410"W	2095054.0650	1323721.6900	289.38	259.44		Set BC/SSROD: AKDOT MP 163.1 2012	
9	59° 39' 53.26212"N	151° 39' 50.57331"W	2073237.8610	1332753.9990	682.38	651.27		Set BC/SSROD: AKDOT MP 168.0 2012	
10	59° 39' 43.53058"N	151° 39' 37.48379"W	2072233.2890	1333401.4440	746.83	715.68		Set BC/SSROD: AKDOT MP 168.2 2012	
11	59° 38' 30.27086"N	151° 33' 06.83104"W	2064311.8440	1353289.7930	131.00	100.03	100.61*	Set BC/SSROD: AKDOT MP 172.8 2012	
12	59° 38' 28.88630"N	151° 32' 43.96015"W	2064143.8920	1354461.7970	110.74	79.80	80.31*	Set BC/SSROD: AKDOT MP 173.0 2012	
551	59° 38' 20.36176"N	151° 29' 29.49454"W	2063050.0400	1364435.6230	101.12	70.49	70.49	Fd BC[NGS]: STATION HOMAIR 1964	
552	59° 39' 33.23021"N	151° 38' 33.94452"W	2071106.6110	1336638.6270	728.94	697.79		Fd Rbr/AC[7222-S]: AKDOT GPS YARD 2006	
553	59° 46' 12.82077"N	151° 36' 02.59257"W	2111475.4010	1345390.7650	1401.32	1372.22		Fd BC[USACE]: STATION BEAVER CREEK 1951	
601	59° 50' 16.23091"N	151° 48' 48.58507"W	2137190.3570	1306856.6090	247.45	220.26	219.95	Fd BC[USC&GS]: R 86 1964	
602	59° 48' 33.08180"N	151° 49' 56.66392"W	2126816.8130	1303089.3450	273.39	245.70	245.60	Fd BC[USC&GS]: P 86 1964	
603	59° 44' 48.13055"N	151° 45' 15.30623"W	2103595.4750	1316870.3620	203.07	173.74	174.36	Fd BC[USC&GS]: H 86 1964	
604	59° 42' 38.19072"N	151° 42' 04.56996"W	2090152.2120	1326302.4320	314.50	284.25	285.19	Fd BC[USC&GS]: E 86 1964	

* NAVD88 elevation determined by direct level tie to Bench Mark "V 85"



HORIZONTAL CONTROL STATEMENT

Coordinates are Alaska State Plane Zone 4, NAD83(NSRS2007) expressed in U.S. Feet. The Basis of Coordinates is NGS Station "HOMAIR" (PID=TT0155), a brass disk having a value of N2,063,050.03968 and E1,364,435.62348. Bearings are grid bearings as determined by GPS observations recorded February 11, 2012 through February 13, 2012 using Leica dual frequency GPS receivers.

VERTICAL CONTROL STATEMENT

Elevations are NAVD88 Orthometric heights expressed in US Feet. The Basis of Elevations is NGS Station "HOMAIR" (PID=TT0155), having a value of 70.49 US Feet. The NAVD 88 orthometric height for this point and all other listed control points was determined by GPS observations recorded February 11, 2012 through February 13, 2012 using Leica dual frequency GPS receivers and a high-resolution geoid model (Geoid-09), except as noted below.

There is no direct correlation between the NGS published NAVD88 elevations of recovered benchmarks and the GPS Orthometric Heights. NAVD88 elevations listed hereon are unverified published values or from a closed differential level loop with a direct tie to an NGS Bench Mark.

A Leica DNA10 digital level was used for all leveling on this project, which was limited to leveling between individual monuments in each azimuth pair, but not between azimuth pairs. The primary control monument for each pair was held in a length weighted adjustment. The accompanying monument of the pair was adjusted to match. All of the level loops closed within Third-Order tolerances per Federal Geodetic Control Committee Standards and Specifications for Geodetic Control Networks.

NOTES:

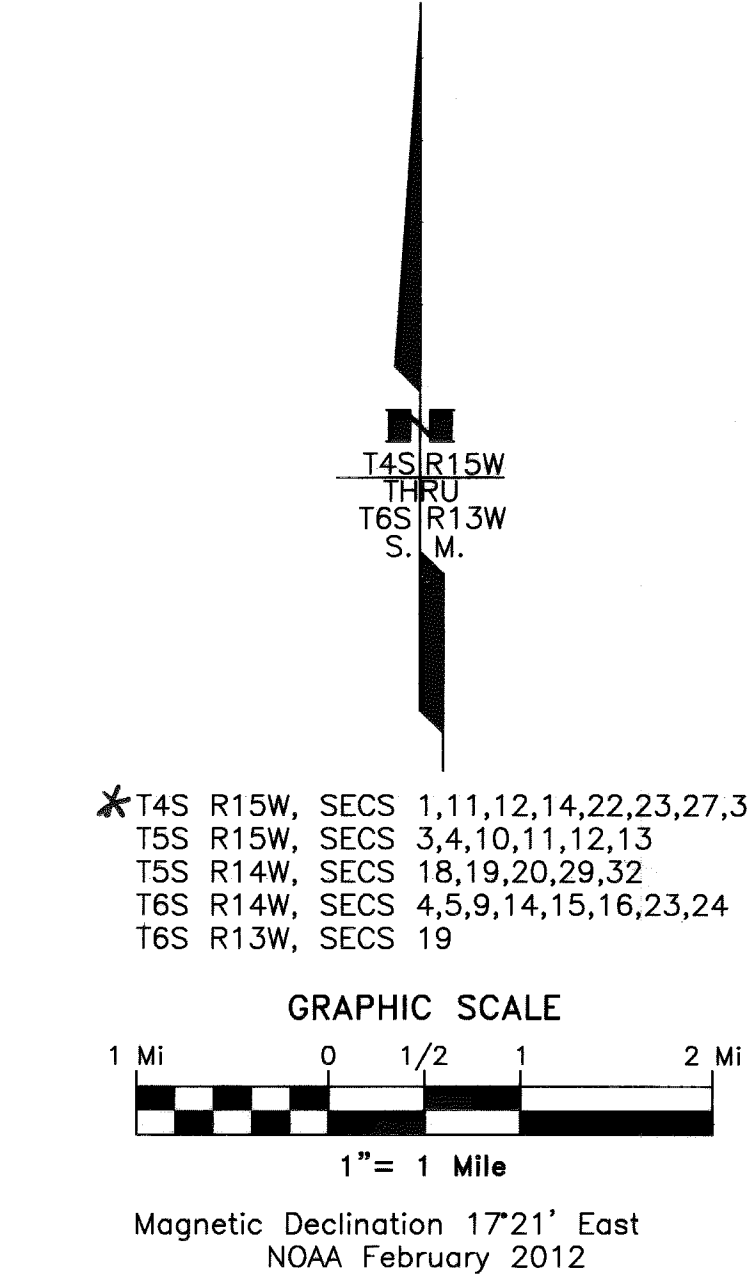
- The information shown hereon is based on a field survey performed by DOWL HKM from February 06, 2012 through February 14, 2012. Background information depicted is shown for orientation only and should not be used for any other purpose.
- The purpose of this survey was to provide new survey control and tie existing monuments that might be disturbed during resurfacing activities on the Sterling Highway.
- Primary horizontal control was established using Static GPS techniques with Leica dual frequency receivers. Vectors were adjusted by a simultaneous least squares adjustment using Leica Geo Office Version 8.2. All recovered monuments were located utilizing Static GPS techniques for positioning. This survey meets or exceeds 1:10,000 closure.
- The road right-of-way and property lines are shown for background and orientation only. A true boundary survey was not a part of this survey and no determination has been made to ensure the boundaries are depicted in the proper location. PLSS monuments shown are in their true location related to the project coordinate system. There was no attempt to rectify the background information such that monuments appear to fall in the proper relationship to section and subdivision of section lines.
- The centerline of the Sterling Highway shown hereon was derived from record Right-of-Way plan sets for ADOT&PF projects F 021-1(2), F 021-1(36), and F 021-1(37).
- All dimensions and coordinates shown are in U.S. Survey Feet unless otherwise noted.

Homer Recording District
State Business - No Fee
This survey does not constitute a subdivision
as defined by AS 40.15.900



STATE OF ALASKA
DEPARTMENT OF TRANSPORTATION
&
PUBLIC FACILITIES
Survey Control Diagram
Record Of Survey
AKSAS Project No.(s) 54130, 54140, 58106
Sterling Highway Pavement Preservation
Kenai Peninsula, Alaska
Within Townships 4S - 6S, Ranges 13W - 15W, S.M. AK

DRAWN	MWD/AWS	DATE	03/01/2012	SCALE	1"= 1 Mi
CHECKED	SEP	DATE	03/01/2012	SHEET	1 OF 11



*T4S R15W, SECS 1,11,12,14,22,23,27,34
T5S R15W, SECS 3,4,10,11,12,13
T5S R14W, SECS 18,19,20,29,32
T6S R14W, SECS 4,5,9,14,15,16,23,24
T6S R13W, SECS 19

LEGEND

- GPS CONTROL POINT
- BENCH MARK
- BLM PRIMARY MONUMENT
- PRIMARY MONUMENT
- CENTERLINE MONUMENT
- POINT NUMBER
- MILEPOST SIGN
- HIGHWAY CENTERLINE
- SECTION LINE
- PROPERTY LINE
- SHORE LINE
- STREAM

Surveyor's Certificate
I hereby certify that I am properly Registered and Licensed to practice Land Surveying in the State of Alaska, and that this drawing represents a survey made by me or under my direct supervision, and that the monuments shown hereon actually exist as described, and that all dimensions and other details are correct to the extent shown hereon.

A. William Stoll, LS-12041
Date 3/2/2012

HORIZONTAL AND VERTICAL CONTROL								
NAD83(NSR2007) GEODETIC COORDINATES			LOCAL COORDINATES		ELLIPSOID HEIGHT	ORTHO HEIGHT	NAVD88 ELEVATION	DESCRIPTION
POINT	LATITUDE	LONGITUDE	NORTHING	EASTING				
3	59° 49' 04.85554"N	151° 49' 32.91823"W	2130008.2170	1304392.2630	269.38	241.84		Set BC/SSROD: AKDOT MP 153.8 2012
4	59° 48' 43.75041"N	151° 49' 43.65678"W	2127881.2650	1303784.2520	309.41	281.77		Set BC/SSROD: AKDOT MP 154.2 2012
602	59° 48' 33.08180"N	151° 49' 56.66392"W	2126816.8130	1303089.3450	273.39	245.70	245.60	Fd BC[USC&GS]: P 86 1964

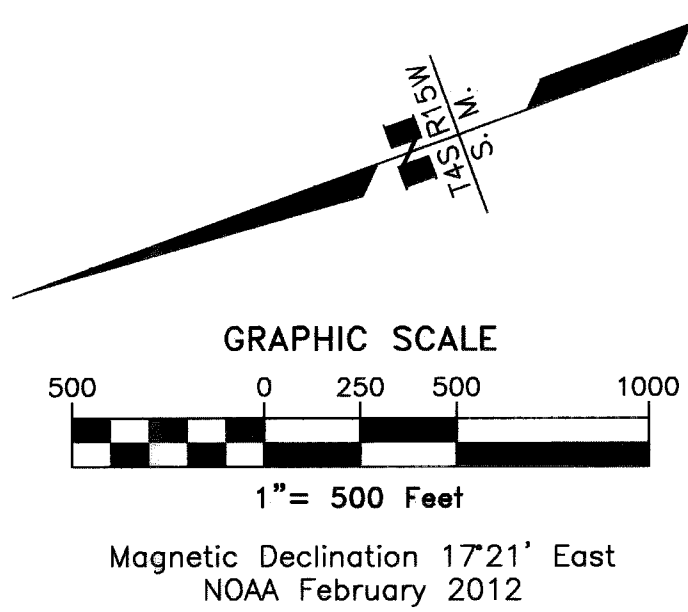
LEGEND	
	GPS CONTROL POINT
	BENCH MARK
	BLM PRIMARY MONUMENT
	PRIMARY MONUMENT
	CENTERLINE MONUMENT
	POINT NUMBER
	MILEPOST SIGN
	HIGHWAY CENTERLINE
	SECTION LINE
	PROPERTY LINE
	SHORE LINE
	STREAM



COOK INLET

Homer Recording District
State Business - No Fee
This survey does not constitute a subdivision
as defined by AS 40.15.900

RECOVERED MONUMENTATION			
LOCAL COORDINATES			DESCRIPTION
POINT	NORTHING	EASTING	
727	2131808.2180	1304746.5320	Fd IP: S14 S15 S22 S23 *T4S R15W



Surveyor's Certificate
I hereby certify that I am properly Registered and Licensed to practice Land Surveying in the State of Alaska, and that this drawing represents a survey made by me or under my direct supervision, and that the monuments shown hereon actually exist as described, and that all dimensions and other details are correct to the extent shown hereon.

A. William Stoll
A. William Stoll, LS-12041

3/2/2012
Date



STATE OF ALASKA
DEPARTMENT OF TRANSPORTATION
&
PUBLIC FACILITIES
Survey Control Diagram
Record Of Survey
AKSAS Project No.(s) 54130, 54140, 58106
Sterling Highway Pavement Preservation
Kenai Peninsula, Alaska
Within Townships 4S - 6S, Ranges 13W - 15W, S.M. AK

DRAWN	MWD/AWS	DATE	03/01/2012	SCALE	1"=500'
CHECKED	SEP	DATE	03/01/2012	SHEET	3 OF 11

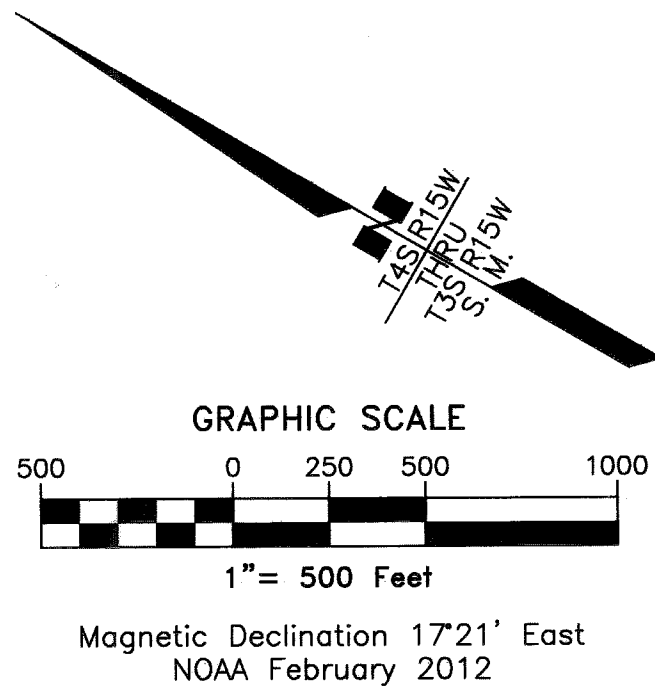
Homer Recording District Plat 2012-5

HORIZONTAL AND VERTICAL CONTROL								
NAD83(NSR2007) GEODETIC COORDINATES			LOCAL COORDINATES		ELLIPSOID HEIGHT	ORTHO HEIGHT	NAVD88 ELEVATION	DESCRIPTION
POINT	LATITUDE	LONGITUDE	NORTHING	EASTING				
5	59° 45' 51.99224"N	151° 49' 09.51048"W	2110400.4310	1305051.3970	205.18	176.48		Set BC/SSROD: AKDOT MP 158.0 2012
6	59° 45' 37.54408"N	151° 48' 50.89134"W	2108907.8810	1305964.4980	205.70	176.89		Set BC/SSROD: AKDOT MP 158.3 2012

LEGEND	
	GPS CONTROL POINT
	BENCH MARK
	BLM PRIMARY MONUMENT
	PRIMARY MONUMENT
	CENTERLINE MONUMENT
	POINT NUMBER
	MILEPOST SIGN
	HIGHWAY CENTERLINE
	SECTION LINE
	PROPERTY LINE
	SHORE LINE
	STREAM



RECOVERED MONUMENTATION			
LOCAL COORDINATES			DESCRIPTION
POINT	NORTHING	EASTING	
702	2116009.6540	1302628.7170	Fd BC/Bx[DOT]: SI STERLING HIGHWAY/NORTH FORK RD.
723	2115997.9720	1303013.3050	Fd BC[DOT]: E 1/16 S34 *T4S R15W
724	2115981.4970	1303635.7260	Fd BC[DOT]: WC CC S3[S4 *T5S R15W
725	2113342.9560	1303563.9390	Fd AM[1301]: 1/4 S3[S4 *T5S R15W
764	2114802.8780	1302675.6390	Fd BC/Bx[DOT]: PC STERLING HIGHWAY
765	2113829.1140	1303193.2610	Fd IP: PT STERLING HIGHWAY



Surveyor's Certificate
I hereby certify that I am properly Registered and Licensed to practice Land Surveying in the State of Alaska, and that this drawing represents a survey made by me or under my direct supervision, and that the monuments shown hereon actually exist as described, and that all dimensions and other details are correct to the extent shown hereon.

A. William Stoll, LS-12041
Date 3/2/2012



STATE OF ALASKA
DEPARTMENT OF TRANSPORTATION
&
PUBLIC FACILITIES
Survey Control Diagram
Record Of Survey

AKSAS Project No.(s) 54130, 54140, 58106
Sterling Highway Pavement Preservation
Kenai Peninsula, Alaska

Within Townships 4S - 6S, Ranges 13W - 15W, S.M. AK

DRAWN	MWD/AWS	DATE	03/01/2012	SCALE	1"=500'
CHECKED	SEP	DATE	03/01/2012	SHEET	4 OF 11

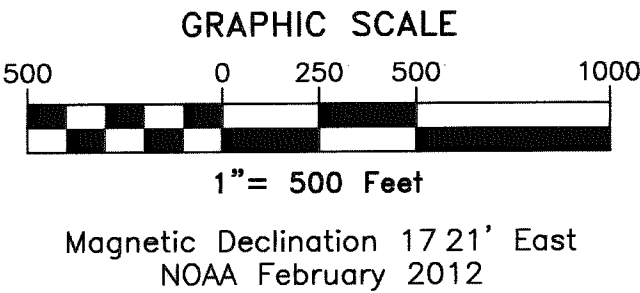
PROJECT: D:\XX\SURVEY\HEAD DRAWING NAME: SCD-XXX.dwg PLOTTED: XXX SCRIPT FILE FOR THIS SHEET:

Homer Recording District Plat 2012-5

PROJECT: D00XX / SURVEY / ACAD DRAWING NAME: S00-XXX.dwg PLOTTED: xxx SCRIPT FILE FOR THIS SHEET: S00-XXX.dwg

HORIZONTAL AND VERTICAL CONTROL								
NAD83(NSR2007) GEODETIC COORDINATES			LOCAL COORDINATES		ELLIPSOID HEIGHT	ORTHO HEIGHT	NAVD88 ELEVATION	DESCRIPTION
POINT	LATITUDE	LONGITUDE	NORTHING	EASTING				
603	59° 44' 48.13055"N	151° 45' 15.30623"W	2103595.4750	1316870.3620	203.07	173.74	174.36	Fd BC[USC&GS]: H 86 1964

- LEGEND
- GPS CONTROL POINT
 - BENCH MARK
 - BLM PRIMARY MONUMENT
 - PRIMARY MONUMENT
 - CENTERLINE MONUMENT
 - POINT NUMBER
 - MILEPOST SIGN
 - HIGHWAY CENTERLINE
 - SECTION LINE
 - PROPERTY LINE
 - SHORE LINE
 - STREAM



RECOVERED MONUMENTATION			
LOCAL COORDINATES			DESCRIPTION
POINT	NORTHING	EASTING	
704	2100376.7500	1318648.2850	Fd BC[ADL]: C-E-SE-SE 1/256 S13 *T5S R13W ASLS 95-38

Surveyor's Certificate
I hereby certify that I am properly Registered and Licensed to practice Land Surveying in the State of Alaska, and that this drawing represents a survey made by me or under my direct supervision, and that the monuments shown hereon actually exist as described, and that all dimensions and other details are correct to the extent shown hereon.

A. William Stoll
A. William Stoll, LS-12041

Date 3/2/2012



STATE OF ALASKA
DEPARTMENT OF TRANSPORTATION
&
PUBLIC FACILITIES
Survey Control Diagram
Record Of Survey

AKSAS Project No.(s) 54130, 54140, 58106
Sterling Highway Pavement Preservation
Kenai Peninsula, Alaska

Within Townships 4S - 6S, Ranges 13W - 15W, S.M. AK

DRAWN	MWD/AWS	DATE	03/01/2012	SCALE	1"=500'
CHECKED	SEP	DATE	03/01/2012	SHEET	5 OF 11

Homer Recording District Plat 2012-5

HORIZONTAL AND VERTICAL CONTROL									
NAD83(NSR2007) GEODETIC COORDINATES			LOCAL COORDINATES		ELLIPSOID HEIGHT	ORTHO HEIGHT	NAVD88 ELEVATION	DESCRIPTION	
POINT	LATITUDE	LONGITUDE	NORTHING	EASTING					
7	59° 43' 39.80238"N	151° 43' 20.44961"W	2096506.0680	1322573.7060	280.65	250.81		Set BC/SSROD: AKDOT MP 162.8 2012	
8	59° 43' 25.79921"N	151° 42' 57.33410"W	2095054.0650	1323721.6900	289.38	259.44		Set BC/SSROD: AKDOT MP 163.1 2012	
604	59° 42' 38.19072"N	151° 42' 04.56996"W	2090152.2120	1326302.4320	314.50	284.25	285.19	Fd BC[USC&GS]: E 86 1964	

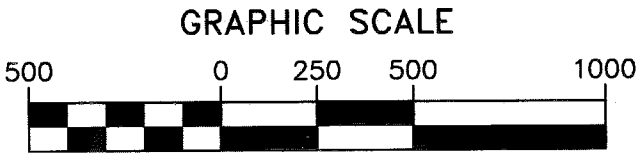
LEGEND

- GPS CONTROL POINT
- BENCH MARK
- BLM PRIMARY MONUMENT
- PRIMARY MONUMENT
- CENTERLINE MONUMENT
- POINT NUMBER
- MILEPOST SIGN
- HIGHWAY CENTERLINE
- SECTION LINE
- PROPERTY LINE
- SHORE LINE
- STREAM



Homer Recording District
State Business - No Fee
This survey does not constitute a subdivision
as defined by AS 40.15.900

RECOVERED MONUMENTATION				
LOCAL COORDINATES			DESCRIPTION	
POINT	NORTHING	EASTING		
763	2094290.1680	1323921.5990	Fd BC[GLO]: S19[S20/S29[S30 *T5S R15W	



Magnetic Declination 1721' East
NOAA February 2012

Surveyor's Certificate

I hereby certify that I am properly Registered and Licensed to practice Land Surveying in the State of Alaska, and that this drawing represents a survey made by me or under my direct supervision, and that the monuments shown hereon actually exist as described, and that all dimensions and other details are correct to the extent shown hereon.

A. William Stoll, LS-12041

3/2/2012
Date



STATE OF ALASKA
DEPARTMENT OF TRANSPORTATION
&
PUBLIC FACILITIES
Survey Control Diagram
Record Of Survey

AKSAS Project No.(s) 54130, 54140, 58106
Sterling Highway Pavement Preservation
Kenai Peninsula, Alaska

Within Townships 4S - 6S, Ranges 13W - 15W, S.M. AK

DRAWN	MWD/AWS	DATE	03/01/2012	SCALE	1"=500'
CHECKED	SEP	DATE	03/01/2012	SHEET	6 OF 11

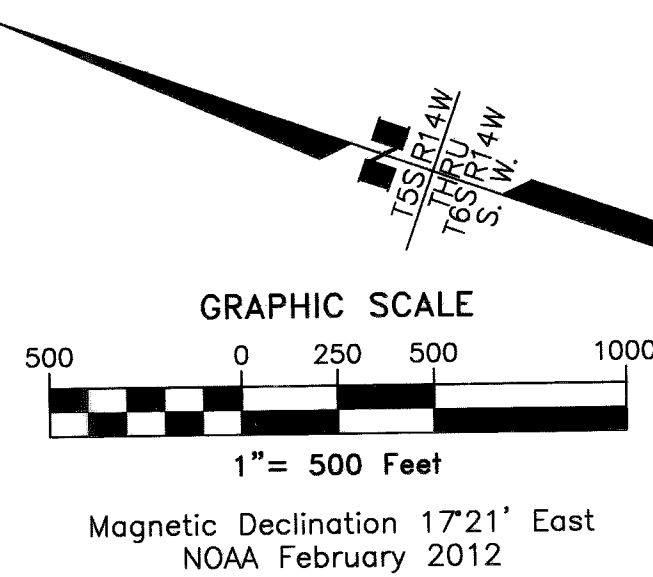
PROJECT: 660X2 SURVEY/ACAD DRAWING NAME: SCD-XXX.dwg PLOTTED: xxx

SCRIPT FILE FOR THIS SHEET:



- LEGEND
- GPS CONTROL POINT
 - BENCH MARK
 - BLM PRIMARY MONUMENT
 - PRIMARY MONUMENT
 - CENTERLINE MONUMENT
 - POINT NUMBER
 - MILEPOST SIGN
 - HIGHWAY CENTERLINE
 - SECTION LINE
 - PROPERTY LINE
 - SHORE LINE
 - STREAM

RECOVERED MONUMENTATION			
LOCAL COORDINATES			DESCRIPTION
POINT	NORTHING	EASTING	
721	2076958.2520	1330108.0860	Fd IP: NW 1/16 S9 *T6S R14W
722	2083593.4900	1328944.8730	Fd BC[GL0]: S32[S33 *T5S R13W/S4]S5 *T6S R13W



Surveyor's Certificate
I hereby certify that I am properly Registered and Licensed to practice Land Surveying in the State of Alaska, and that this drawing represents a survey made by me or under my direct supervision, and that the monuments shown hereon actually exist as described, and that all dimensions and other details are correct to the extent shown hereon.

A. William Stoll
A. William Stoll, LS-12041
Date 3/2/2012



Homer Recording District
State Business - No Fee
This survey does not constitute a subdivision
as defined by AS 40.15.900

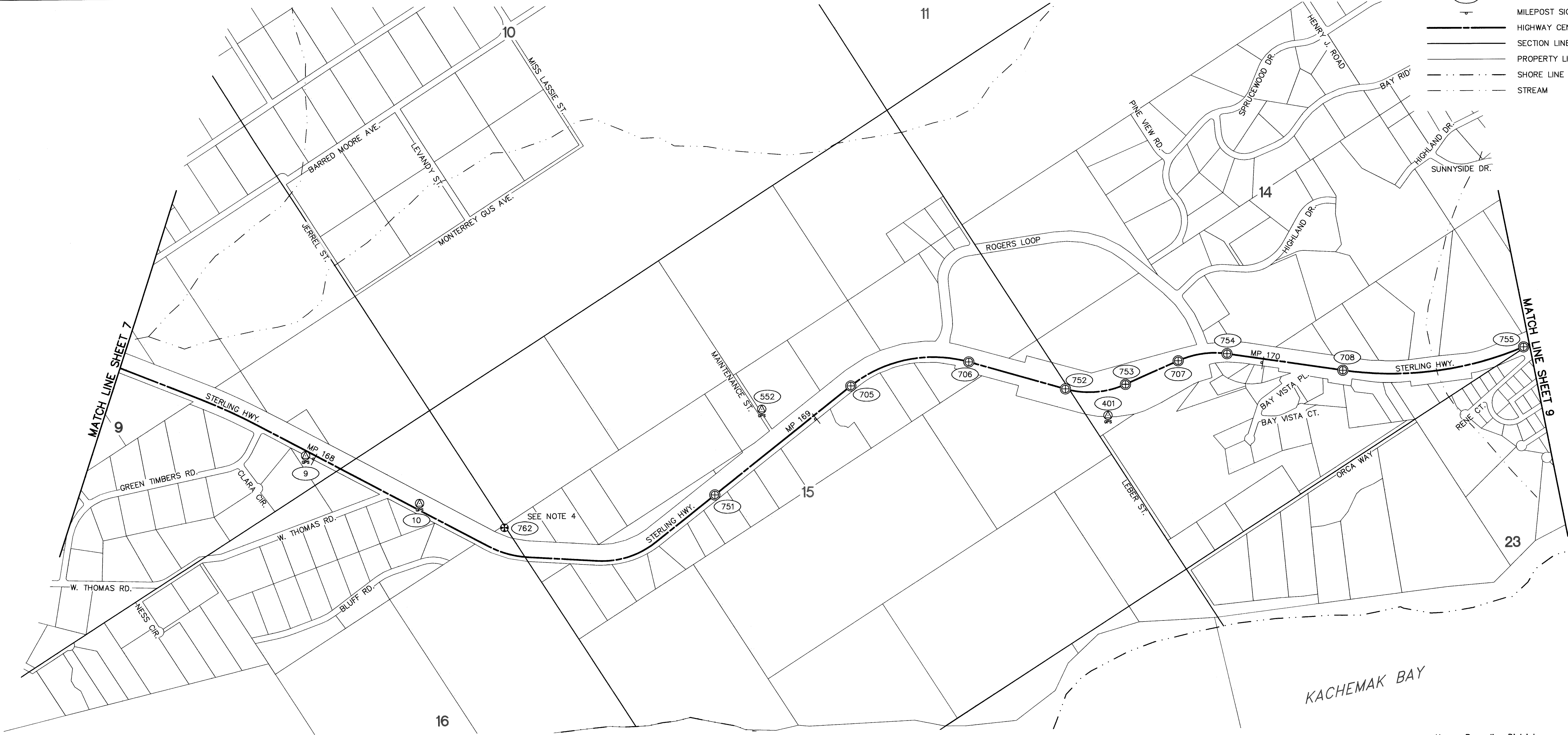
STATE OF ALASKA
DEPARTMENT OF TRANSPORTATION
&
PUBLIC FACILITIES
Survey Control Diagram
Record Of Survey
AKSAS Project No.(s) 54130, 54140, 58106
Sterling Highway Pavement Preservation
Kenai Peninsula, Alaska
Within Townships 4S - 6S, Ranges 13W - 15W, S.M. AK

DRAWN	MWD/AWS	DATE	03/01/2012	SCALE	1"=500'
CHECKED	SEP	DATE	03/01/2012	SHEET	7 OF 11

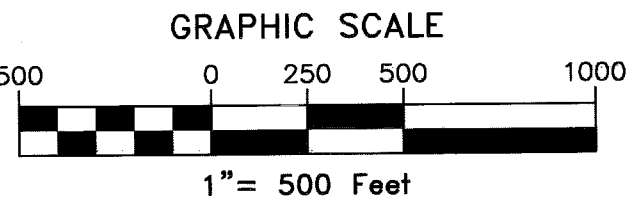
Homer Recording District Plat 2012-5

HORIZONTAL AND VERTICAL CONTROL								
NAD83(NSR2007) GEODETIC COORDINATES			LOCAL COORDINATES		ELLIPSOID HEIGHT	ORTHO HEIGHT	NAVD88 ELEVATION	DESCRIPTION
POINT	LATITUDE	LONGITUDE	NORTHING	EASTING				
9	59° 39' 53.26212"N	151° 39' 50.57331"W	2073237.8610	1332753.9990	682.38	651.27		Set BC/SSROD: AKDOT MP 168.0 2012
10	59° 39' 43.53058"N	151° 39' 37.48379"W	2072233.2890	1333401.4440	746.83	715.68		Set BC/SSROD: AKDOT MP 168.2 2012
401	59° 39' 14.74031"N	151° 37' 40.06852"W	2069161.7240	1339359.6510	810.62	779.44		Set Rbr/AC[6714-S]: STR-401
552	59° 39' 33.23021"N	151° 38' 33.94452"W	2071106.6110	1336638.6270	728.94	697.79		Fd Rbr/AC[7222-S]: AKDOT GPS YARD 2006

- LEGEND
- GPS CONTROL POINT
 - BENCH MARK
 - BLM PRIMARY MONUMENT
 - PRIMARY MONUMENT
 - CENTERLINE MONUMENT
 - POINT NUMBER
 - MILEPOST SIGN
 - HIGHWAY CENTERLINE
 - SECTION LINE
 - PROPERTY LINE
 - SHORE LINE
 - STREAM



RECOVERED MONUMENTATION				
LOCAL COORDINATES			DESCRIPTION	
POINT	NORTHING	EASTING		
705	2070803.3200	1337474.7710	Fd AM/Bx[DOT]: PC STERLING HIGHWAY	
706	2070348.9100	1338544.3480	Fd AM/Bx[DOT]: PT STERLING HIGHWAY	
707	2069214.4680	1340217.9480	Fd AM/Bx[DOT]: PC STERLING HIGHWAY	
708	2068236.3940	1341475.2660	Fd AM/Bx[DOT]: PC STERLING HIGHWAY	
751	2070682.2050	1335797.4050	Fd AM/Bx[DOT]: BOP STERLING HIGHWAY	
752	2069604.4400	1339165.1340	Fd AM/Bx[DOT]: PC STERLING HIGHWAY	
753	2069312.6210	1339668.2400	Fd AM/Bx[DOT]: PT STERLING HIGHWAY	
754	2069002.7270	1340644.5930	Fd AM/Bx[DOT]: PT STERLING HIGHWAY	
755	2067434.4590	1343043.6220	Fd AM/Bx[DOT]: PT STERLING HIGHWAY	
762	2071575.7350	1333944.6230	Fd BC[BLM]: N 1/16 S15[S16 *T6S R14W	



Magnetic Declination 17°21' East
NOAA February 2012

Surveyor's Certificate
I hereby certify that I am properly Registered and Licensed to practice Land Surveying in the State of Alaska, and that this drawing represents a survey made by me or under my direct supervision, and that the monuments shown hereon actually exist as described, and that all dimensions and other details are correct to the extent shown hereon.



STATE OF ALASKA
DEPARTMENT OF TRANSPORTATION
&
PUBLIC FACILITIES
Survey Control Diagram
Record Of Survey

AKSAS Project No.(s) 54130, 54140, 58106
Sterling Highway Pavement Preservation
Kenai Peninsula, Alaska

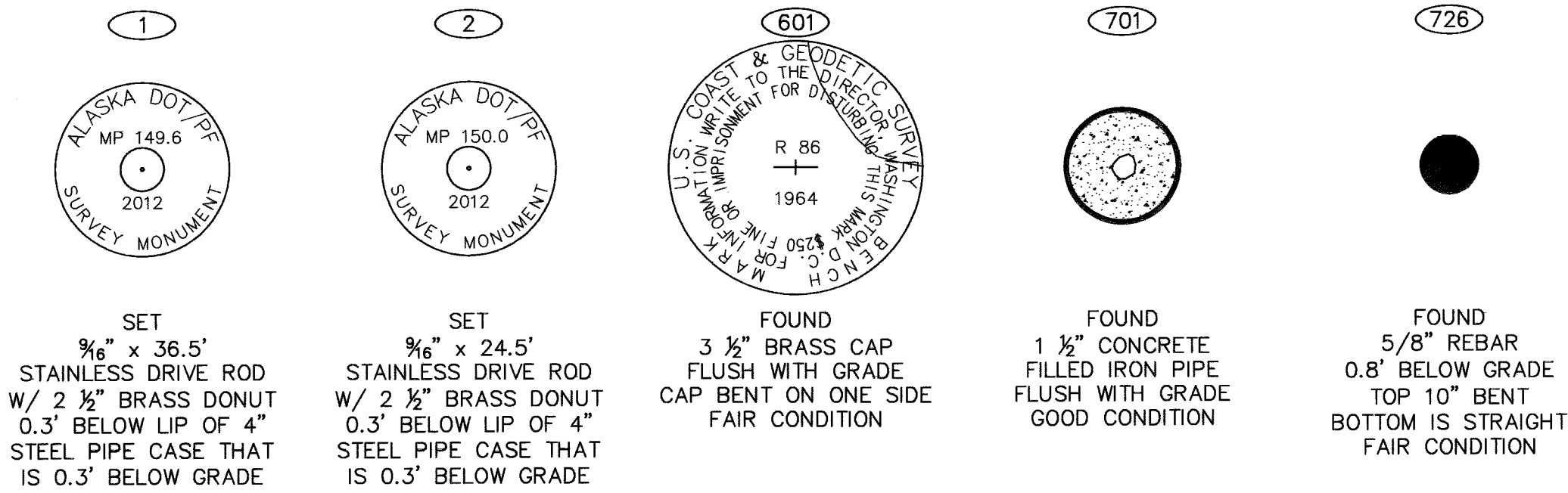
Within Townships 4S - 6S, Ranges 13W - 15W, S.M. AK

DRAWN	MWD/AWS	DATE	03/01/2012	SCALE	1"=500'
CHECKED	SEP	DATE	03/01/2012	SHEET	8 OF 11

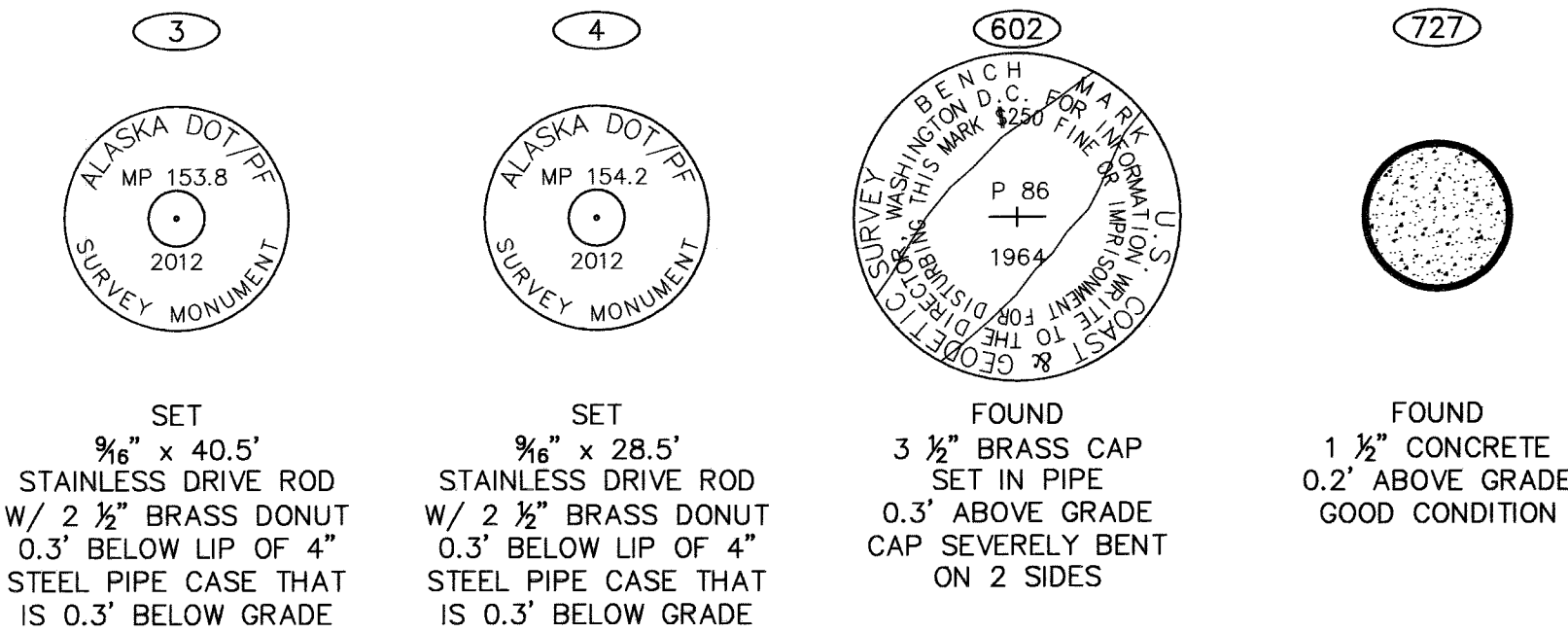
Homer Recording District P1 2012-5
A. William Stoll, LS-12041

3/2/2012
Date

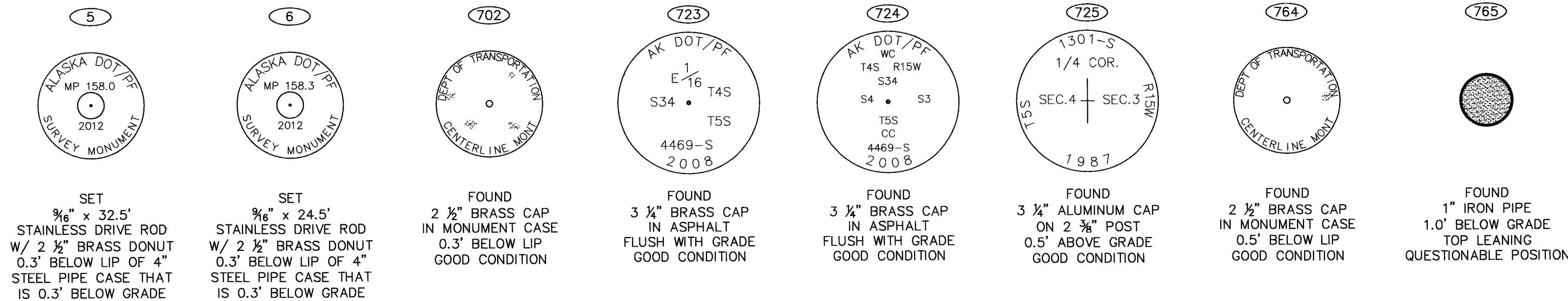
SHEET 2 MONUMENTS



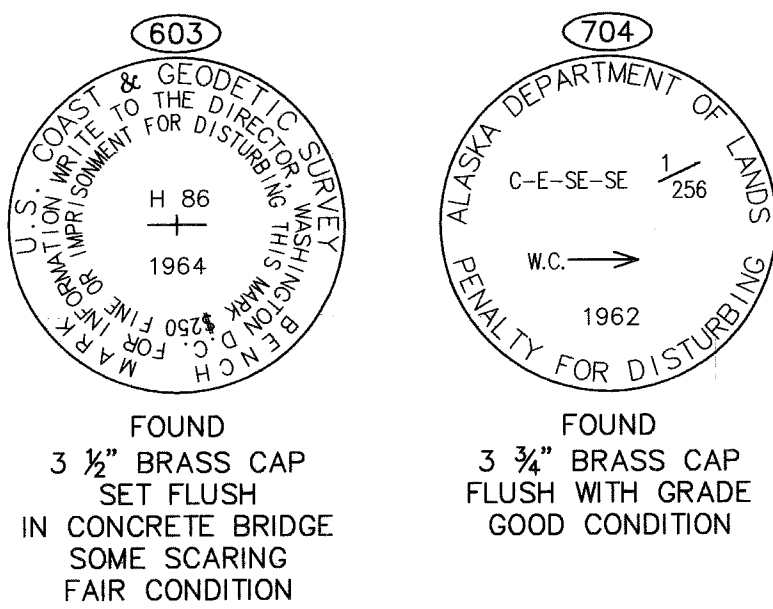
SHEET 3 MONUMENTS



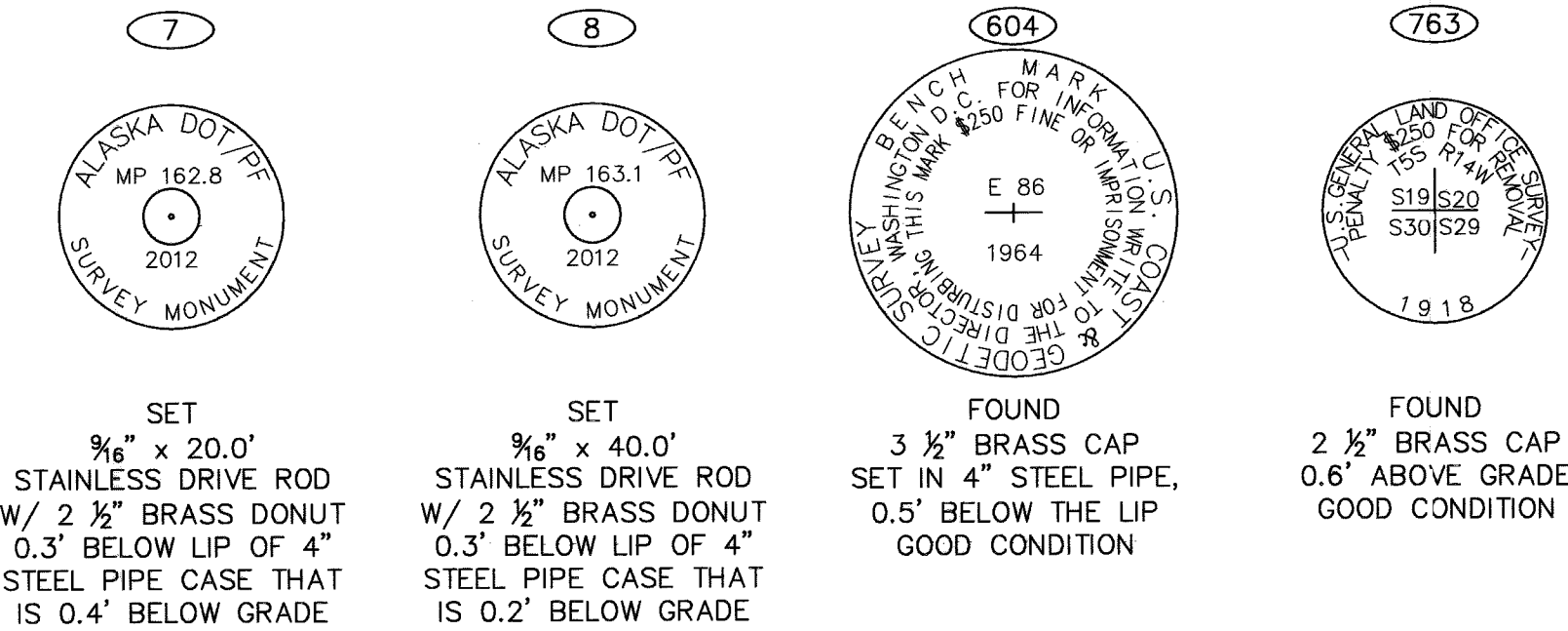
SHEET 4 MONUMENTS



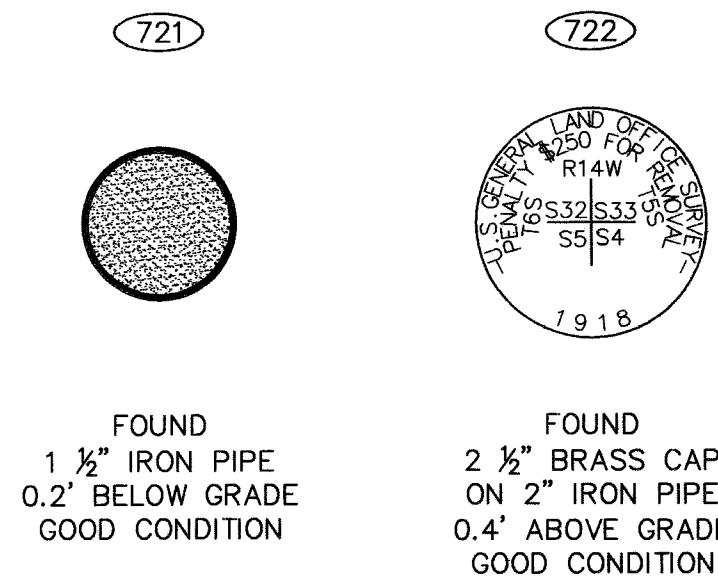
SHEET 5 MONUMENTS



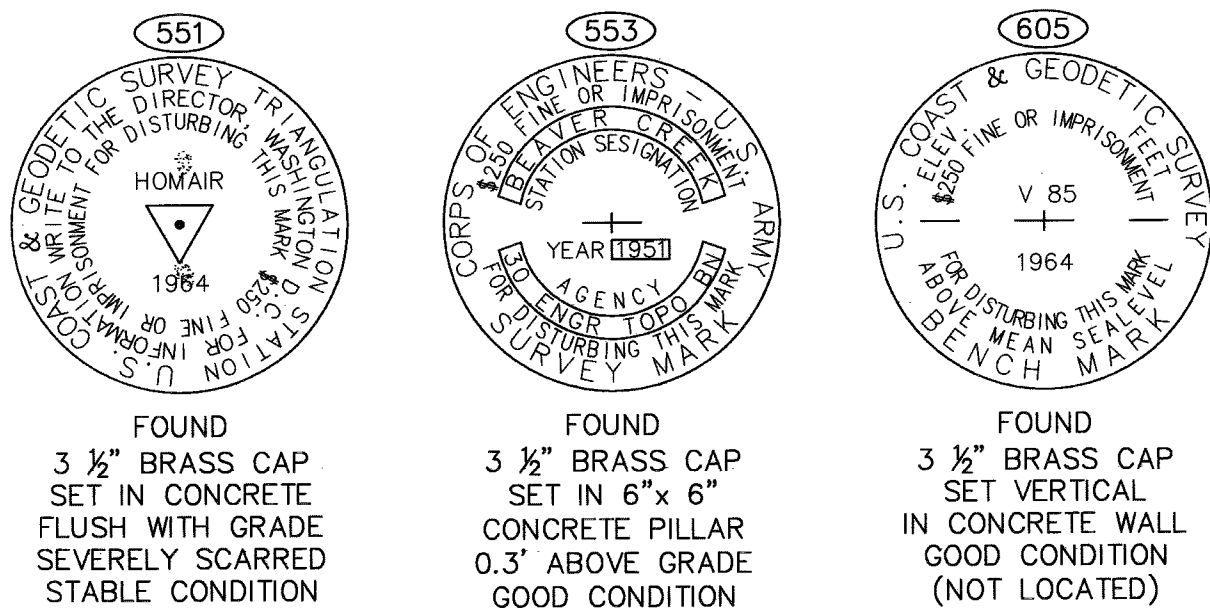
SHEET 6 MONUMENTS



SHEET 7 MONUMENTS



MONUMENTS NOT SHOWN



Surveyor's Certificate

I hereby certify that I am properly Registered and Licensed to practice Land Surveying in the State of Alaska, and that this drawing represents a survey made by me or under my direct supervision, and that the monuments shown hereon actually exist as described, and that all dimensions and other details are correct to the extent shown hereon.

A. William Stoll, LS-12041

3/2/2012
Date

Homer Recording District
State Business - No Fee
This survey does not constitute a subdivision
as defined by AS 40.15.900

STATE OF ALASKA
DEPARTMENT OF TRANSPORTATION
&
PUBLIC FACILITIES
Survey Control Diagram
Record Of Survey

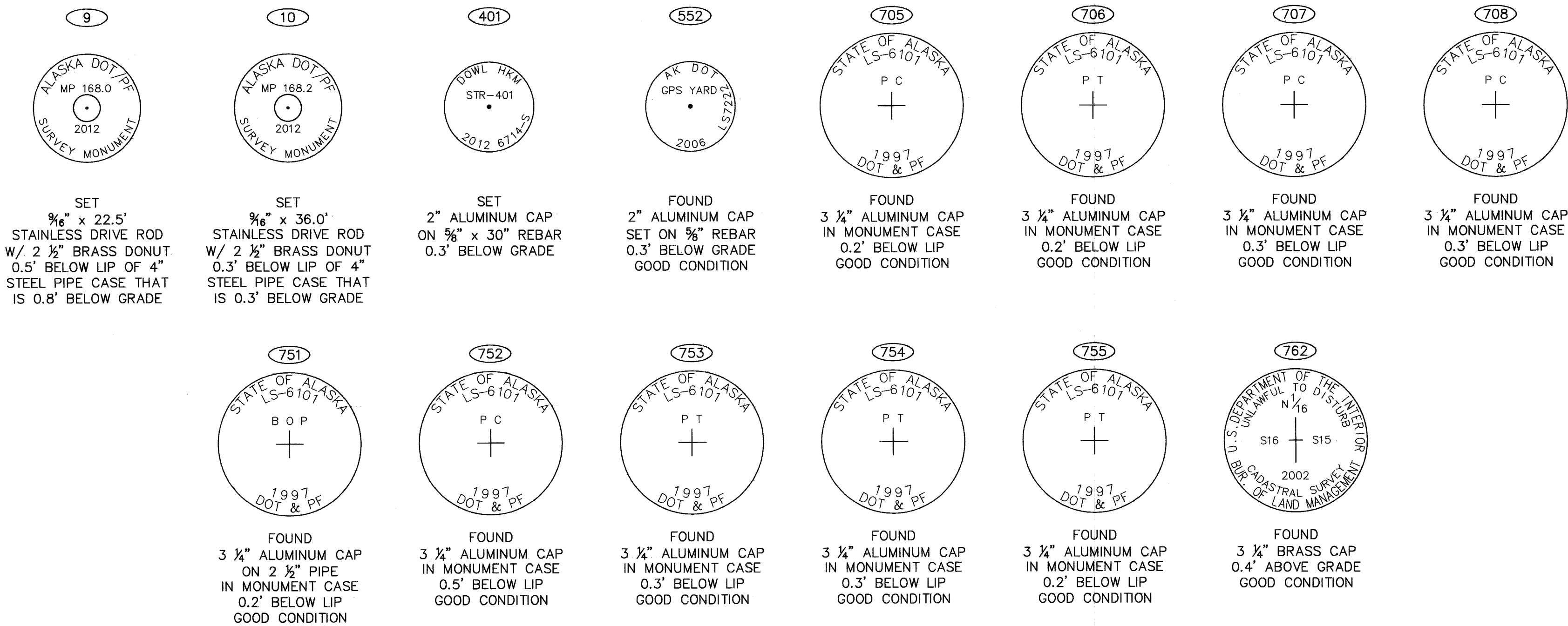
AKSAS Project No.(s) 54130, 54140, 58106
Sterling Highway Pavement Preservation
Kenai Peninsula, Alaska

Within Townships 4S - 6S, Ranges 13W - 15W, S.M. AK

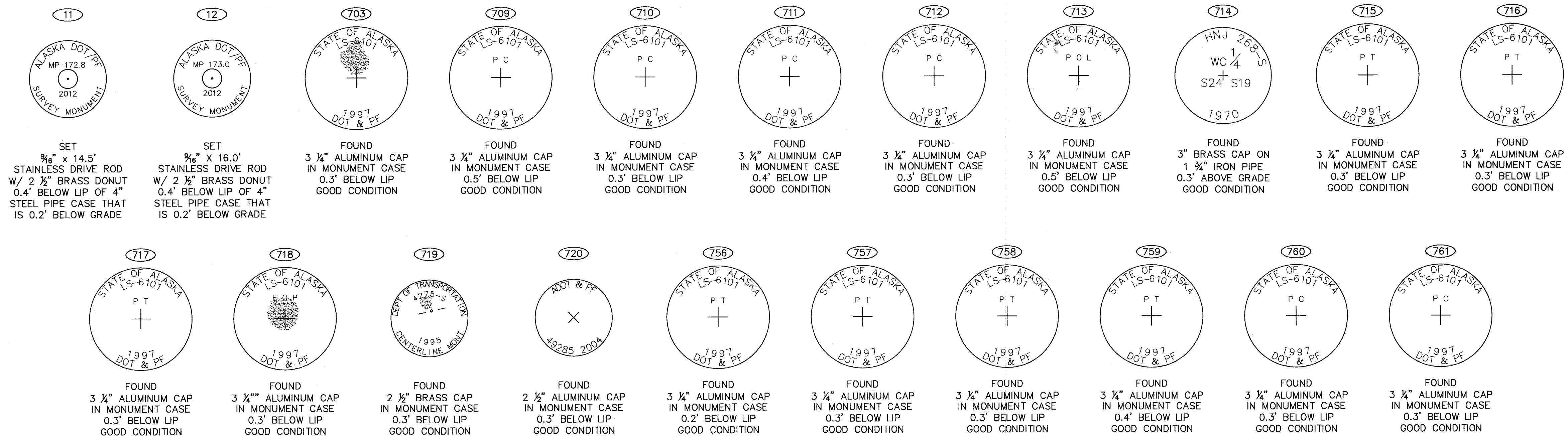
DRAWN	MWD/AWS	DATE	03/01/2012	SCALE	N/A
CHECKED	SEP	DATE	03/01/2012	SHEET	10 OF 11

Homer Recording District Plat 2012-5

SHEET 8 MONUMENTS



SHEET 9 MONUMENTS



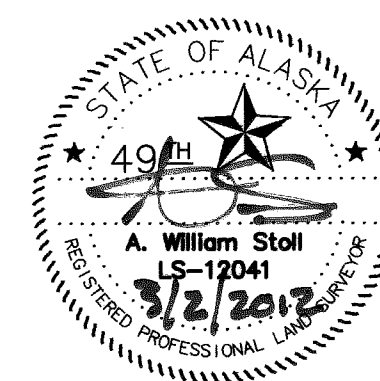
Homer Recording District
State Business - No Fee
This survey does not constitute a subdivision
as defined by AS 40.15.900

2012-5
Homer
DIST
3-12-2012
DATE
9:30A M
TIME

Surveyor's Certificate
I hereby certify that I am properly Registered and Licensed to practice Land Surveying in the State of Alaska, and that this drawing represents a survey made by me or under my direct supervision, and that the monuments shown hereon actually exist as described, and that all dimensions and other details are correct to the extent shown hereon.

A. William Stoll
A. William Stoll, LS-12041

3/2/2012
Date



STATE OF ALASKA
DEPARTMENT OF TRANSPORTATION
&
PUBLIC FACILITIES
Survey Control Diagram
Record Of Survey

AKSAS Project No.(s) 54130, 54140, 58106
Sterling Highway Pavement Preservation
Kenai Peninsula, Alaska

Within Townships 4S - 6S, Ranges 13W - 15W, S.M. AK

DRAWN	MWD/AWS	DATE	03/01/2012	SCALE	N/A
CHECKED	SEP	DATE	03/01/2012	SHEET	11 OF 11