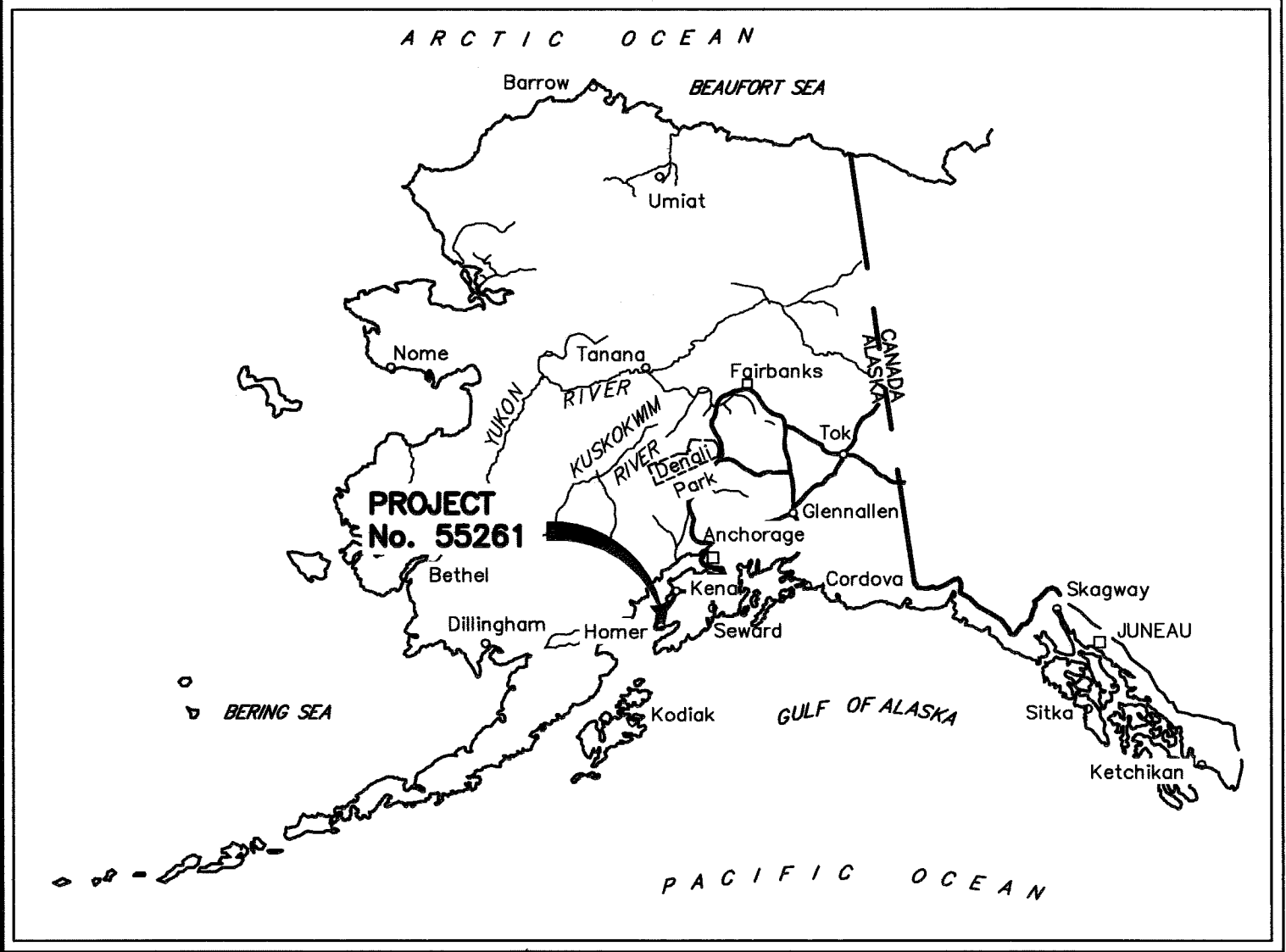
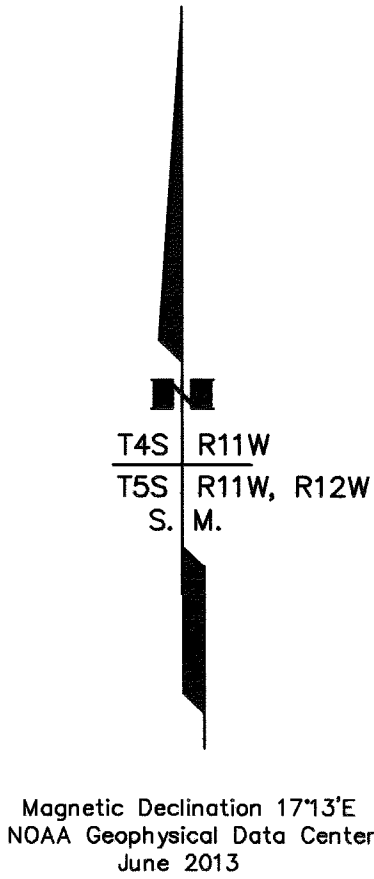


| HORIZONTAL AND VERTICAL CONTROL | | | | | | | | | |
|--------------------------------------|------------------|-------------------|-------------------|-------------|------------------|--------------|--|--|--|
| NAD83(NSRS2007) GEODETIC COORDINATES | | | LOCAL COORDINATES | | ELLIPSOID HEIGHT | ORTHO HEIGHT | DESCRIPTION | | |
| POINT | LATITUDE | LONGITUDE | NORTHING | EASTING | | | | | |
| 12 | 59°38'28.88631"N | 151°32'43.96015"W | 95644.2072 | 107744.9147 | 110.88 | 80.26 | Fd BC/SSROD: AKDOT MP 173.0 2012 | | |
| 21 | 59°44'41.60789"N | 151°15'26.97486"W | 132353.1296 | 161751.8731 | 1369.50 | 1338.06 | Set AM[LS-7222]: AK DOT PF RCM 12.3 2013 | | |
| 22 | 59°44'37.77630"N | 151°14'54.49694"W | 131932.7552 | 163408.4749 | 1376.43 | 1344.92 | Set AM[LS-7222]: AK DOT PF RCM 12.6 2013 | | |
| 23 | 59°45'28.60831"N | 151°12'42.72623"W | 136967.4336 | 170253.9475 | 1479.71 | 1448.07 | Set AM[LS-7222]: AK DOT PF RCM 14.3 2013 | | |
| 24 | 59°45'38.04331"N | 151°12'29.04435"W | 137912.3880 | 170972.0843 | 1485.01 | 1453.36 | Set AM[LS-7222]: AK DOT PF RCM 14.5 2013 | | |
| 25 | 59°46'14.48354"N | 151°11'14.47095"W | 141542.4451 | 174857.1502 | 1190.66 | 1158.91 | Set AM[LS-7222]: AK DOT PF RCM 15.6 2013 | | |
| 26 | 59°46'22.14355"N | 151°10'47.11774"W | 142295.0158 | 176271.2955 | 1149.13 | 1117.38 | Set AM[LS-7222]: AK DOT PF RCM 15.9 2013 | | |
| 27 | 59°47'10.56784"N | 151°09'56.01248"W | 147164.3055 | 178973.8152 | 1253.09 | 1221.32 | Set AM[LS-7222]: AK DOT PF RCM 17.2 2013 | | |
| 28 | 59°47'18.25599"N | 151°09'32.14761"W | 147923.3246 | 180208.6231 | 1250.65 | 1218.85 | Set AM[LS-7222]: AK DOT PF RCM 17.5 2013 | | |
| 29 | 59°48'18.32464"N | 151°08'12.28295"W | 153950.1962 | 184399.6102 | 1362.43 | 1330.57 | Set AM[LS-7222]: AK DOT PF RCM 19.6 2013 | | |
| 30 | 59°48'12.46937"N | 151°07'53.36100"W | 153339.2635 | 185357.1578 | 1291.08 | 1259.16 | Set AM[LS-7222]: AK DOT PF RCM 19.9 2013 | | |
| 551 | 59°38'20.36176"N | 151°29'29.49455"W | 94550.3619 | 117718.6803 | 101.19 | 70.49 | Fd BC[NGS]: Station HOMAIR 1964 | | |

*Heights derived using Static GPS methods.

LEGEND

- GPS Control Point, Found or Set
- Monument Number, see Sheets 6 & 7
- Highway Centerline Asbuilt
- Section Line
- Township Line



HORIZONTAL CONTROL STATEMENT

Basis of Coordinates:
This project is located entirely within the HOM1 adjustment, a U.S. Survey Foot local surface grid coordinate system developed by the Alaska Department of Transportation & Public Facilities. The Basis of Coordinates is NGS Station "HOMAIR" (PID=TT0155), a brass disk having HOM1 coordinate values of 94,550.3619 N and 117,718.6803 E. Bearings are grid bearings as determined by GPS observations recorded May 24, 2013 through June 1, 2013 using Topcon dual frequency GPS receivers.

The Basis of Bearings is a local plane bearing between NGS Station "HOMAIR" (PID=TT0155) and AKDOT Control Point GPS-MP 173.0 2012. AKDOT Control Point GPS-MP 173.0 2012 bears N 83°44'29" W a distance of 10033.57 U.S. Survey Feet from NGS Station "HOMAIR" (PID=TT0155). AKDOT Control Point GPS-MP 173.0 2012 has HOM1 coordinates of 95,644.2072 N, and 107,744.9147 E.

Transformation Parameters:
The conversion from local coordinate system to Alaska State Plane coordinate system, Zone 4, NAD1983(NSRS2007): translate the local coordinates using +1,968,487.1707 feet North and +1,246,708.6707 feet East; then scale resulting coordinates using a scale factor of 1.0000060627.

The conversion from Alaska State Plane coordinate system, Zone 4, NAD1983(NSRS2007) to local surface grid coordinates; scale the State Plane coordinates using a scale factor of 0.9999939374; then translate the resulting coordinates using -1,968,487.1707 feet North and -1,246,708.6707 feet East.

VERTICAL CONTROL STATEMENT

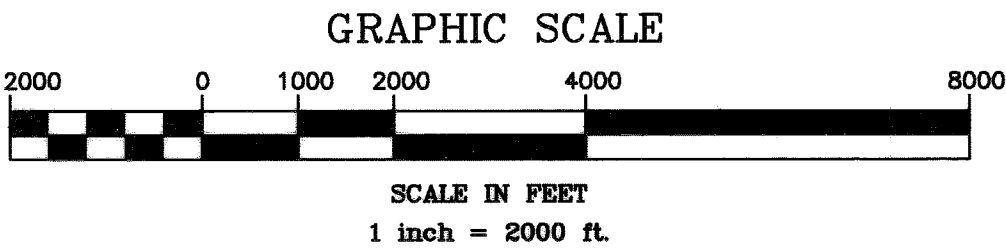
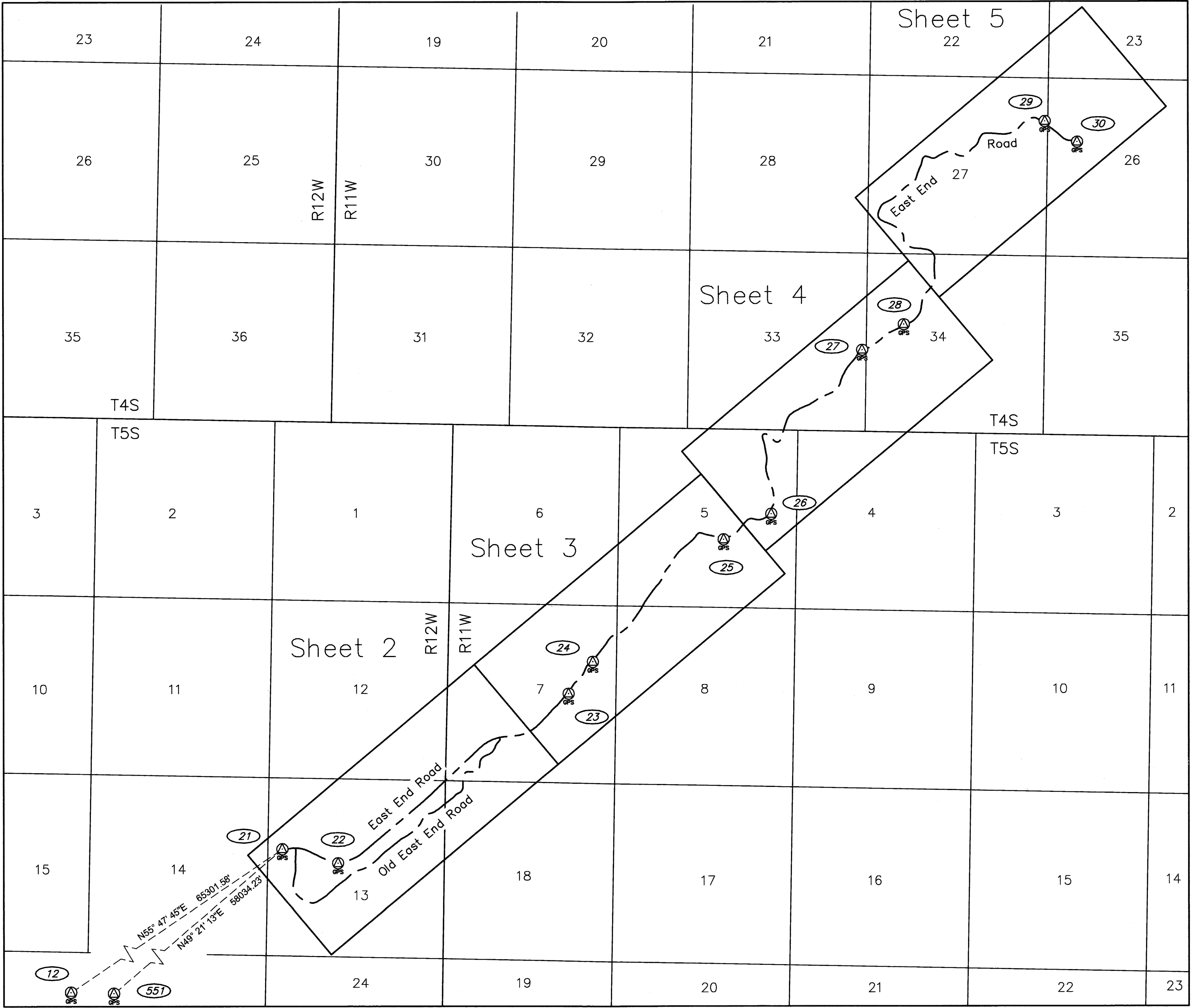
Elevations are NAVD88 orthometric heights expressed in US Feet. The Basis of Elevations is NGS Station "HOMAIR" (PID=TT0155), having a value of 70.49 US Feet. The NAVD 88 orthometric height for this point is taken from the Record of Survey, AKSAS Project No.(s) 54130, 54140, 58106, Sterling Highway Pavement Preservation, Kenai Peninsula, Alaska, recorded as Plat No. 2012-5, Homer Recording District. The NAVD 88 orthometric height for all other listed control points was determined by GPS observations recorded May 24, 2013 through June 1, 2013 using Topcon dual frequency GPS receivers and a high-resolution geoid model (Geoid-2012A), except as noted below.

A Topcon DL-502 digital level was used for all leveling on this project, which was limited to leveling between individual monuments in each azimuth pair, but not between azimuth pairs. Control Points 21, 24, 26, 27 and 29 were held in length weighted adjustments. The accompanying monument of the pair was adjusted to match. All of the level loops closed within Third-Order tolerances per Federal Geodetic Control Committee Standards and Specifications for Geodetic Control Networks.

NOTES:

- The information shown hereon is based on a field survey performed by McClintock Land Associates, Inc. from May 22, 2013 through June 4, 2013. Background information depicted is shown for orientation only and should not be used for any other purpose.
- The purpose of this survey was to provide new survey control and tie existing monuments that might be disturbed during resurfacing activities on East End Road and Old East End Road.
- Primary horizontal control was established using Static GPS techniques with Topcon dual frequency receivers. Vectors were adjusted by a simultaneous least squares adjustment using Magnet Office Tools. All recovered monuments were located using Static GPS techniques for positioning. This survey meets or exceeds 1:10,000 closure.
- The road right-of-way and property lines are shown for background and orientation only. A true boundary survey was not a part of this survey and no determination has been made to ensure the boundaries are depicted in the proper location. PLSS monuments shown are in their true location related to the project coordinate system. There was no attempt to rectify the background information such that monuments appear to fall in the proper relationship to section and subdivision of section lines.
- The centerlines of East End Road and Old East End Road were asbuilt this survey.
- All dimensions and coordinates shown are in U.S. Survey Feet unless otherwise noted.
- Michael P. Frame, PLS (LS6093) was the field surveyor for this project.

Homer Recording District
State Business - No Fee
This survey does not constitute a subdivision as defined by AS 40.15.900



SURVEYOR'S CERTIFICATE

I hereby certify that I am properly Registered and Licensed to practice Land Surveying in the State of Alaska, and that this drawing represents a survey made by me or under my direct supervision, and that the monuments shown hereon actually exist as described, and that all dimensions and other details are correct to the extent shown hereon.

Michael E. Miller, LS-7222
Date 8/9/13



HOMER 2013-18
HOMER Recording District

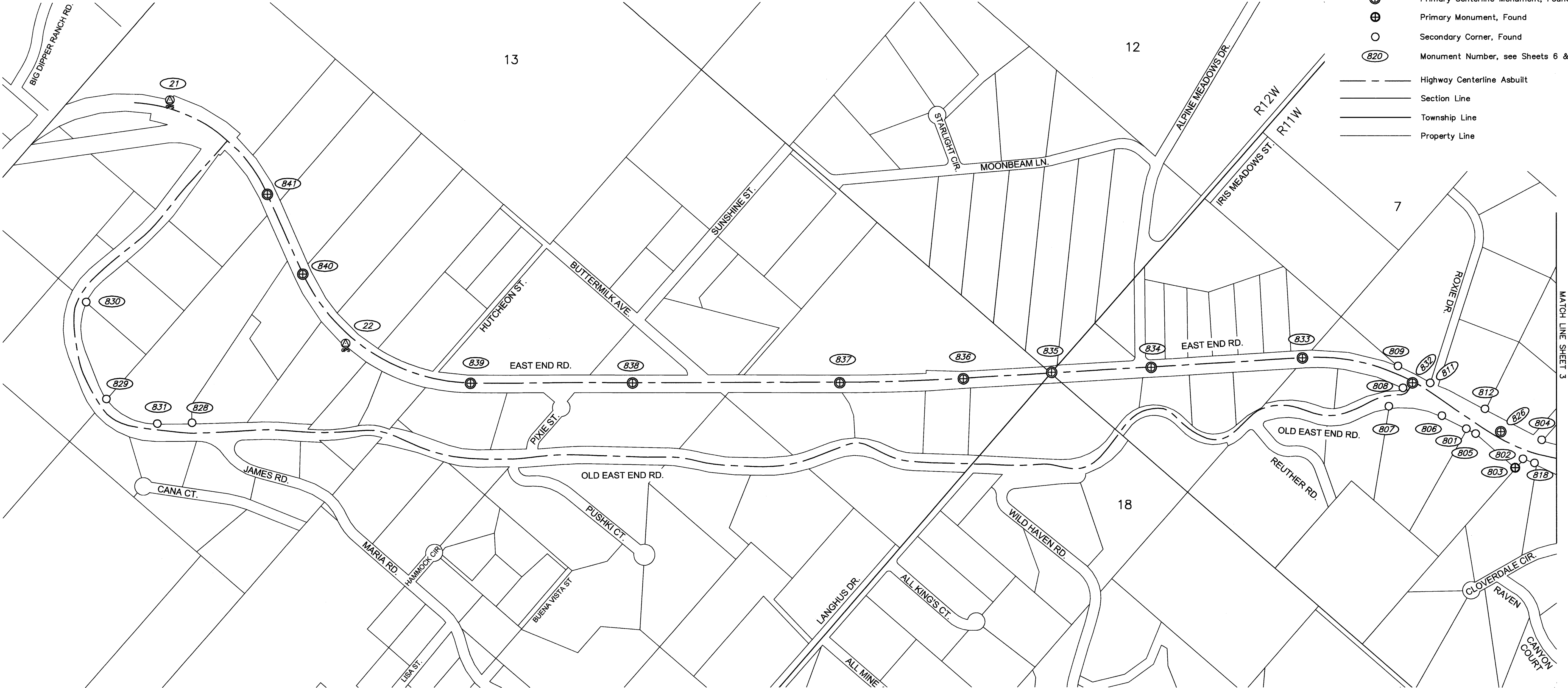
| STATE OF ALASKA DEPARTMENT OF TRANSPORTATION & PUBLIC FACILITIES | | | |
|--|--------------|------------------|--|
| Survey Control Diagram Record Of Survey AKSAS Project No. 55261 | | | |
| Homer: East End Road MP 12.5 To End & Old East End Road Located within Sections 26, 27, 33, & 34 T4S 11W, Sections 5, 7, 8 & 18 T5S R11W and Sections 12 & 13, T5S R12W, S.M., AK | | | |
| DRAWN SKS | DATE 8-01-13 | SCALE 1" = 2000' | |
| CHECKED MF | DATE 8-01-13 | SHEET 1 OF 7 | |

| HORIZONTAL AND VERTICAL CONTROL | | | | | | | | | |
|--------------------------------------|------------------|-------------------|-------------------|-------------|-----------|---------|--|--|--|
| NAD83(NSRS2007) GEODETIC COORDINATES | | | LOCAL COORDINATES | | ELLIPSOID | ORTHO | DESCRIPTION | | |
| POINT | LATITUDE | LONGITUDE | NORTHING | EASTING | HEIGHT | HEIGHT | | | |
| 21 | 59°44'41.60789"N | 151°15'26.97486"W | 132353.1296 | 161751.8731 | 1369.50 | 1338.06 | Set AM[LS-7222]: AK DOT PF RCM 12.3 2013 | | |
| 22 | 59°44'37.77630"N | 151°14'54.49694"W | 131932.7552 | 163408.4749 | 1376.43 | 1344.92 | Set AM[LS-7222]: AK DOT PF RCM 12.6 2013 | | |

*Heights derived using Static GPS methods.

LEGEND

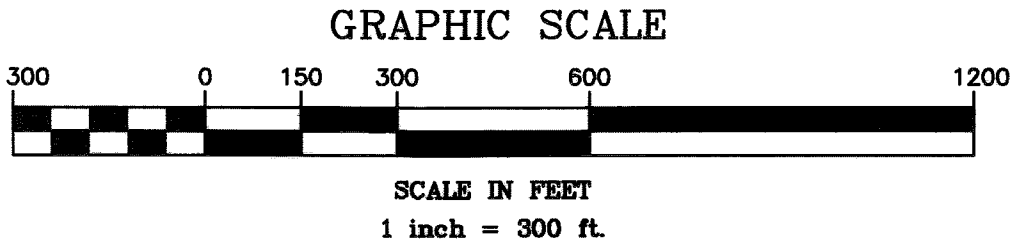
- GPS Control Point, Set
- Primary Centerline Monument, Found
- Primary Monument, Found
- Secondary Corner, Found
- Monument Number, see Sheets 6 & 7
- Highway Centerline Asbuilt
- Section Line
- Township Line
- Property Line



| RECOVERED MONUMENTATION | | | |
|-------------------------|-------------|-------------|--|
| LOCAL COORDINATES | | DESCRIPTION | |
| POINT | NORTHING | EASTING | |
| 801 | 135656.6112 | 168604.7556 | Fd Rbr/AC[5780-S]: NE L3 Condra Terrace |
| 802 | 135731.7482 | 168961.7490 | Fd Rbr: NW L6 Fox River Estates |
| 803 | 135664.0323 | 168960.6835 | Fd BC[3815-S]: CS 1/16 S7 *T5S R11W SM |
| 804 | 135883.3186 | 168974.1739 | Fd Rbr/AC[4928-S]: SW TRIC Irina Hgts. Subd. Basargin Add. |
| 805 | 135669.2178 | 168663.3267 | Fd Rbr/PC[3686-S]: N LINE L4 Condra Terrace |
| 806 | 135624.1990 | 168450.9477 | Fd Rbr/PC[3686-S]: PC N LINE L3 Condra Terrace |
| 807 | 135471.3473 | 168184.9395 | Fd Rbr/PC[3686-S]: NE L2 Condra Terrace |
| 808 | 135603.0326 | 168179.1047 | Fd Rbr/AC[3686-S]: PC NE L5 Condra Terrace Too |
| 809 | 135680.0836 | 168077.5646 | Fd Rbr/AC[3686-S]: PC NE L20 Condra Terrace Too |
| 811 | 135724.3713 | 168279.8511 | Fd Rbr: SE L1 B1 Glacierview Farm |
| 812 | 135811.5844 | 168613.1165 | Fd Rbr: SE L4 B2 Glacierview Farm |
| 818 | 135756.0134 | 169026.9811 | Fd Rbr: NE L6 Fox River Estates |
| 826 | 135768.8817 | 168765.6095 | Fd BC[DOT]: PC EAST END ROAD |
| 828 | 131025.6032 | 163028.1288 | Fd Rbr/AC[5780-S]: WC SE L3 B2 Dufour Subd. Add. No. 1 |

| RECOVERED MONUMENTATION | | | |
|-------------------------|-------------|-------------|--|
| LOCAL COORDINATES | | DESCRIPTION | |
| POINT | NORTHING | EASTING | |
| 829 | 130816.7170 | 162567.3049 | Fd Rbr/AC[5780-S]: WC SW L3 B2 Dufour Subd. Add. No. 1 |
| 830 | 131165.6079 | 162125.3048 | Fd Rbr/AC[3686-S]: SW Schaum Tract ROS 85-4 Homer Rec. Dist. |
| 831 | 130894.9070 | 162879.7561 | Fd Rbr: WC PT S LINE L3 B2 Dufour Subd. Add. No. 1 |
| 832 | 135659.3786 | 168202.4285 | Fd BC/Bx[DOT]: PT EAST END ROAD |
| 833 | 135365.3163 | 167632.1434 | Fd BC/Bx[DOT]: PC EAST END ROAD |
| 834 | 134772.2871 | 167007.8874 | Fd BC/Bx[DOT]: POT EAST END ROAD |
| 835 | 134385.8124 | 166593.5192 | Fd BC/Bx[DOT]: S121S7/S131S18 *T5S R12W R11W SM |
| 836 | 134035.0091 | 166231.7783 | Fd BC/Bx[DOT]: PT EAST END ROAD |
| 837 | 133566.3842 | 165707.2792 | Fd BC/Bx[DOT]: PC EAST END ROAD |
| 838 | 132808.6824 | 164804.6784 | Fd BC/Bx[DOT]: POT EAST END ROAD |
| 839 | 132215.4715 | 164098.2187 | Fd BC/Bx[DOT]: PT EAST END ROAD |
| 840 | 132078.3884 | 162968.4597 | Fd BC/Bx[DOT]: PT EAST END ROAD |
| 841 | 132298.4416 | 162521.4733 | Fd BC/Bx[DOT]: PT EAST END ROAD |

Magnetic Declination 17°13'E
NOAA Geophysical Data Center
June 2013



Homer Recording District
State Business - No Fee
This survey does not constitute a
subdivision as defined by AS 40.15.900

STATE OF ALASKA
DEPARTMENT OF TRANSPORTATION
&
PUBLIC FACILITIES
Survey Control Diagram
Record Of Survey
AKSAS Project No. 55261
Homer: East End Road MP 12.5
To End & Old East End Road
Located within Sections 26, 27, 33, & 34 T4S 11W,
Sections 5, 7, 8 & 18 T5S R11W and Sections 12 & 13, T5S R12W, S.M., AK

| | | | | | |
|---------|-----|------|---------|-------|-----------|
| DRAWN | SKS | DATE | 8-01-13 | SCALE | 1" = 300' |
| CHECKED | MF | DATE | 8-01-13 | SHEET | 2 OF 7 |

HOMER 2013-18

| HORIZONTAL AND VERTICAL CONTROL | | | | | | | |
|--|------------------|-------------------|--|-------------------|-------------|-----------|--------------|
| NAD83(NSRS2007) GEODETIC COORDINATES | | | | LOCAL COORDINATES | | ELLIPSOID | |
| POINT | LATITUDE | LONGITUDE | | NORTHING | EASTING | HEIGHT | ORTHO HEIGHT |
| 23 | 59°45'28.6083"N | 151°12'42.72623"W | | 136967.4336 | 170253.9475 | 1479.71 | 1448.07 |
| 24 | 59°45'38.04331"N | 151°12'29.04435"W | | 137912.3880 | 170972.0843 | 1485.01 | 1453.36 |
| 25 | 59°46'14.48354"N | 151°11'14.47095"W | | 141542.4451 | 174857.1502 | 1190.66 | 1158.91 |
| Set AM[LS-7222]: AK DOT PF RCM 14.3 2013 | | | | | | | |
| Set AM[LS-7222]: AK DOT PF RCM 14.5 2013 | | | | | | | |
| Set AM[LS-7222]: AK DOT PF RCM 15.6 2013 | | | | | | | |

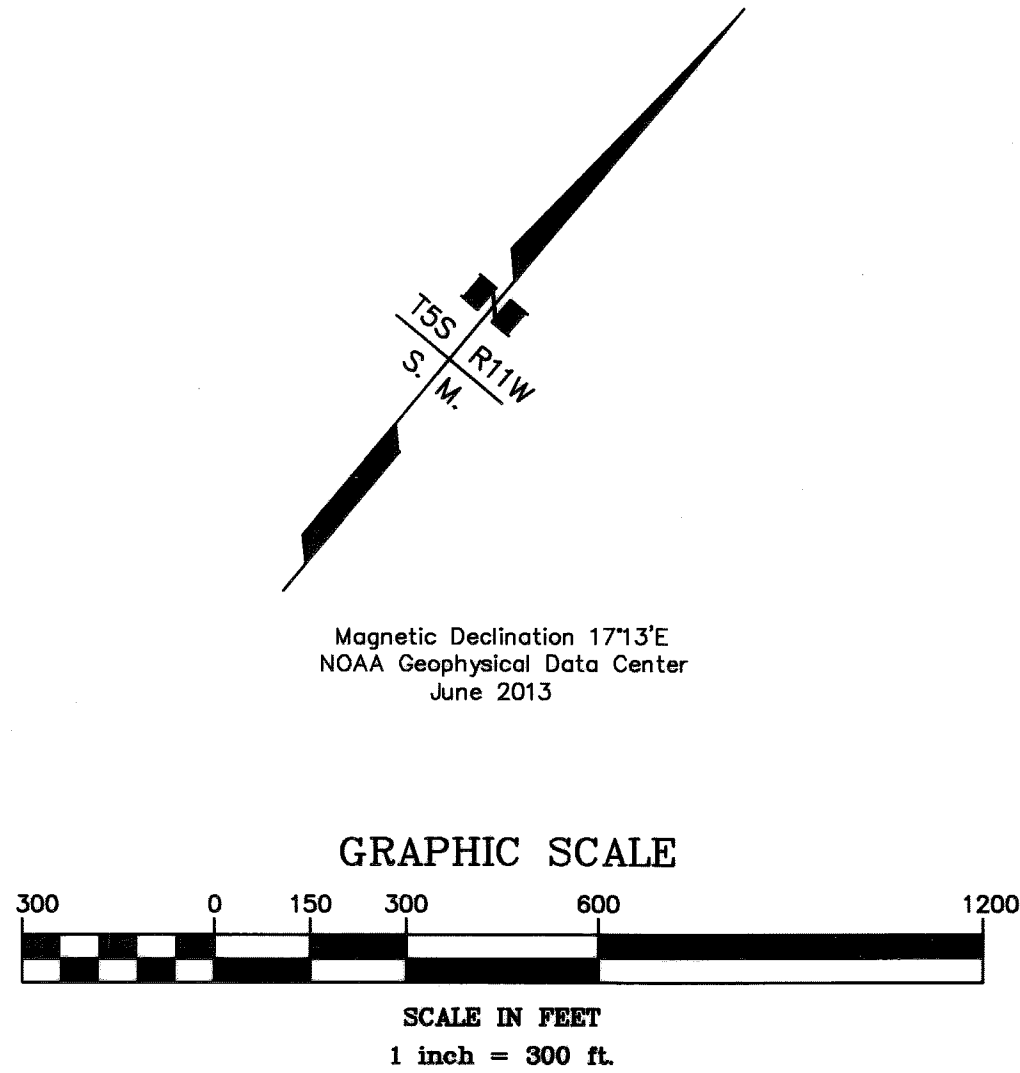
*Heights derived using Static GPS methods.



LEGEND

- GPS Control Point, Set
- Primary Centerline Monument, Found
- Secondary Corner, Found
- Monument Number, see Sheets 6 & 7
- Highway Centerline Asbuilt
- Section Line
- Property Line

| RECOVERED MONUMENTATION | | | |
|-------------------------|-------------|-------------|--|
| LOCAL COORDINATES | | | DESCRIPTION |
| POINT | NORTHING | EASTING | |
| 813 | 136230.2198 | 168919.1238 | Fd Rbr: SW L6 B2 Glacierview Farm |
| 814 | 136062.4143 | 169261.0759 | Fd Rbr/AC[4928-S]: SW TR1B Irina Hgts. Subd. Basargin Add. |
| 815 | 135857.2818 | 169325.7593 | Fd Rbr: NE L5 Fox River Estates |
| 816 | 135971.4845 | 169506.0511 | Fd Rbr: PC N LINE L4 Fox River Estates |
| 817 | 136318.3805 | 169509.3180 | Fd Rbr/PC[3686-S]: SW TR2A Irina Heights Too |
| 827 | 136107.7514 | 169380.2991 | Fd BC[DOT]: PT EAST END ROAD |



Homer Recording District
State Business - No Fee
This survey does not constitute a
subdivision as defined by AS 40.15.900

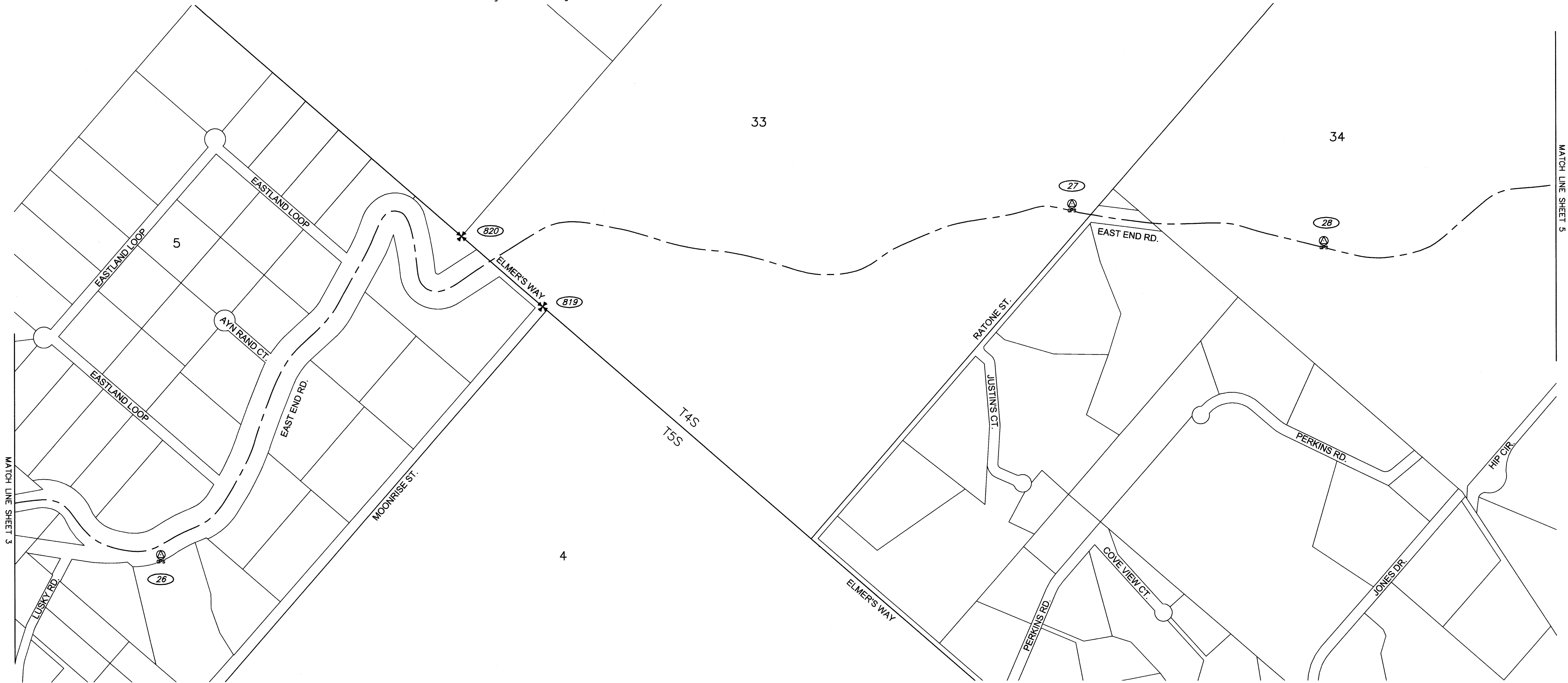
STATE OF ALASKA
DEPARTMENT OF TRANSPORTATION
&
PUBLIC FACILITIES
Survey Control Diagram
Record Of Survey
AKSAS Project No. 55261
Homer: East End Road MP 12.5
To End & Old East End Road
Located within Sections 26, 27, 33, & 34 T4S 11W,
Sections 5, 7, 8 & 18 T5S R11W and Sections 12 & 13, T5S R12W, S.M., AK

| | | | | | |
|---------|-----|------|---------|-------|-----------|
| DRAWN | SKS | DATE | 8-01-13 | SCALE | 1" = 300' |
| CHECKED | MF | DATE | 8-01-13 | SHEET | 3 OF 7 |

HOMER 2013-18

| HORIZONTAL AND VERTICAL CONTROL | | | | | | | |
|--------------------------------------|------------------|-------------------|-------------------|-------------|------------------|--------------|--|
| NAD83(NSRS2007) GEODETIC COORDINATES | | | LOCAL COORDINATES | | ELLIPSOID HEIGHT | ORTHO HEIGHT | DESCRIPTION |
| POINT | LATITUDE | LONGITUDE | NORTHING | EASTING | | | |
| 26 | 59°46'22.14355"N | 151°10'47.11774"W | 142295.0158 | 176271.2955 | 1149.13 | 1117.38 | Set AM[LS-7222]: AK DOT PF RCM 15.9 2013 |
| 27 | 59°47'10.56784"N | 151°09'56.01248"W | 147164.3055 | 178973.8152 | 1253.09 | 1221.32 | Set AM[LS-7222]: AK DOT PF RCM 17.2 2013 |
| 28 | 59°47'18.25599"N | 151°09'32.14761"W | 147923.3246 | 180208.6231 | 1250.65 | 1218.85 | Set AM[LS-7222]: AK DOT PF RCM 17.5 2013 |

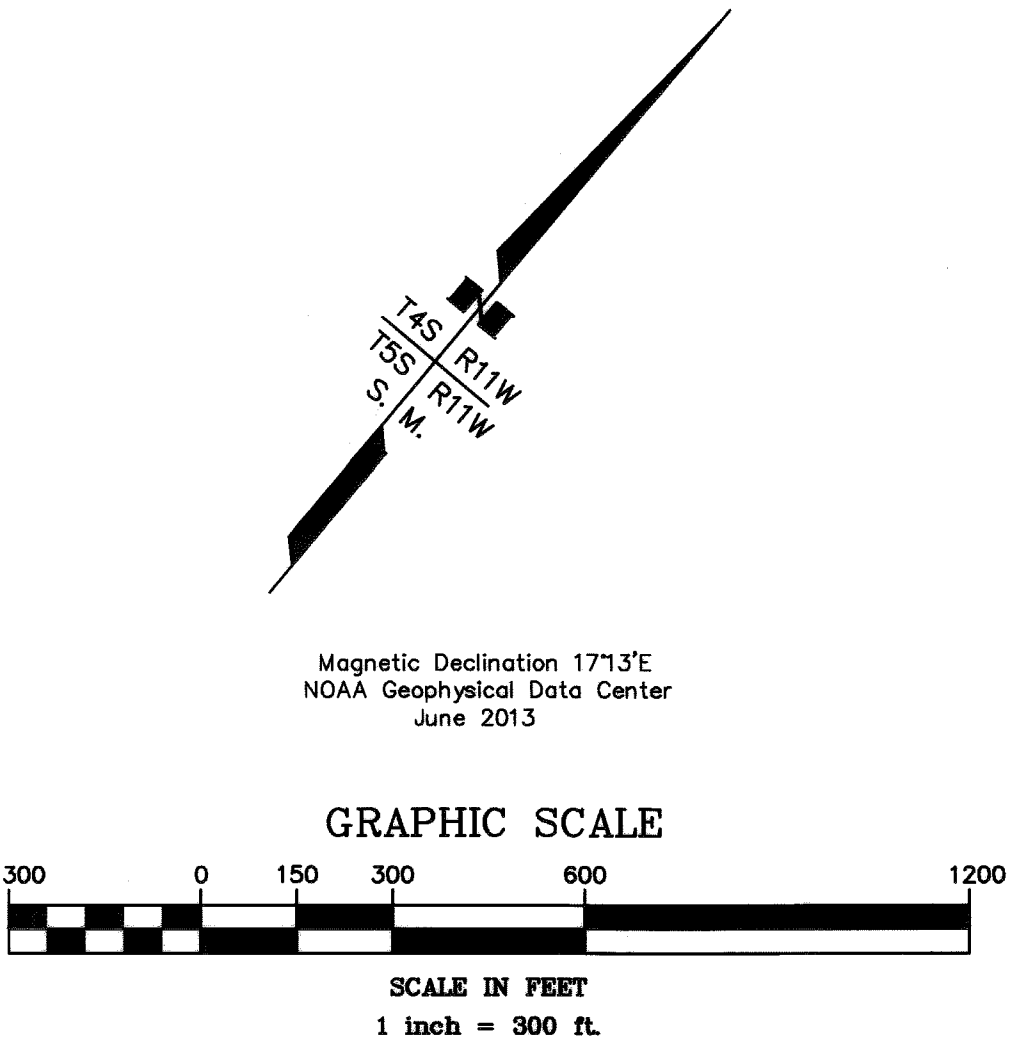
*Heights derived using Static GPS methods.



LEGEND

- GPS Control Point, Set
- BLM Primary Monument, Found
- Monument Number, see Sheets 6 & 7
- Highway Centerline Asbuilt
- Section Line
- Township Line
- Property Line

| RECOVERED MONUMENTATION | | | |
|-------------------------|-------------|-------------|---|
| LOCAL COORDINATES | | | DESCRIPTION |
| POINT | NORTHING | EASTING | |
| 819 | 144779.1431 | 177034.5943 | Fd BC[BLM]: S33 *T4S R11W/S51S4 CC *T5S R11W SM |
| 820 | 144789.9348 | 176422.2943 | Fd BC[BLM]: SC 1/4 S33 *T4S R11W SM |



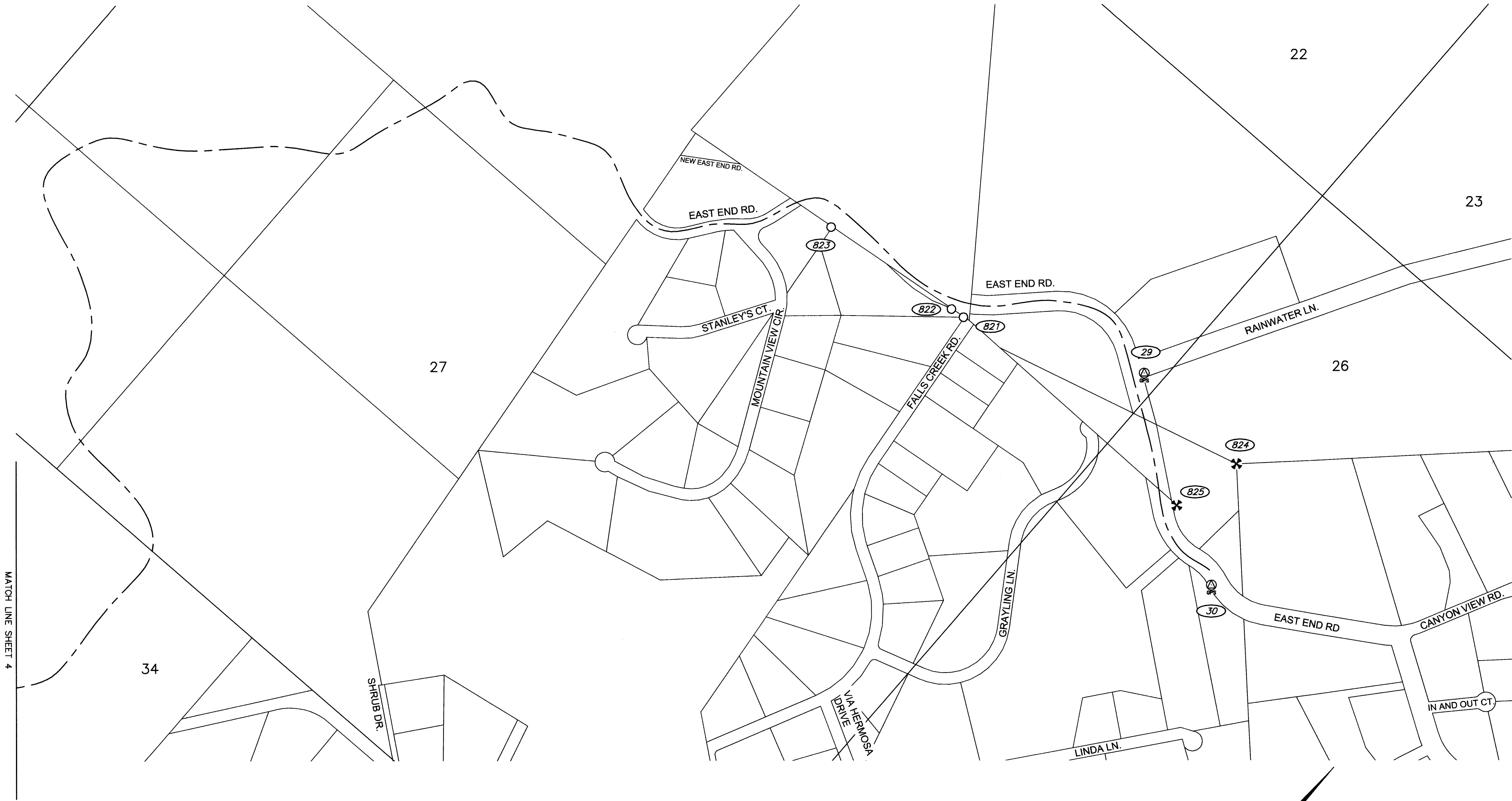
STATE OF ALASKA
DEPARTMENT OF TRANSPORTATION
&
PUBLIC FACILITIES
Survey Control Diagram
Record Of Survey
AKSAS Project No. 55261
Homer: East End Road MP 12.5
To End & Old East End Road
Located within Sections 26, 27, 33, & 34 T4S 11W,
Sections 5, 7, 8 & 18 T5S R11W and Sections 12 & 13, T5S R12W, S.M., AK

| | | | | | |
|---------|-----|------|---------|-------|-----------|
| DRAWN | SKS | DATE | 8-01-13 | SCALE | 1" = 300' |
| CHECKED | MF | DATE | 8-01-13 | SHEET | 4 OF 7 |

HOMER 2013-18

| HORIZONTAL AND VERTICAL CONTROL | | | | | | | | | |
|--------------------------------------|------------------|-------------------|-------------------|-------------|-----------|---------|--|--|--|
| NAD83(NSRS2007) GEODETIC COORDINATES | | | LOCAL COORDINATES | | ELLIPSOID | ORTHO | DESCRIPTION | | |
| POINT | LATITUDE | LONGITUDE | NORTHING | EASTING | HEIGHT | HEIGHT | | | |
| 29 | 59°48'18.32464"N | 151°08'12.28295"W | 153950.1962 | 184399.6102 | 1362.43 | 1330.57 | Set AM[LS-7222]: AK DOT PF RCM 19.6 2013 | | |
| 30 | 59°48'12.46937"N | 151°07'53.36100"W | 153339.2635 | 185357.1578 | 1291.08 | 1259.16 | Set AM[LS-7222]: AK DOT PF RCM 19.9 2013 | | |

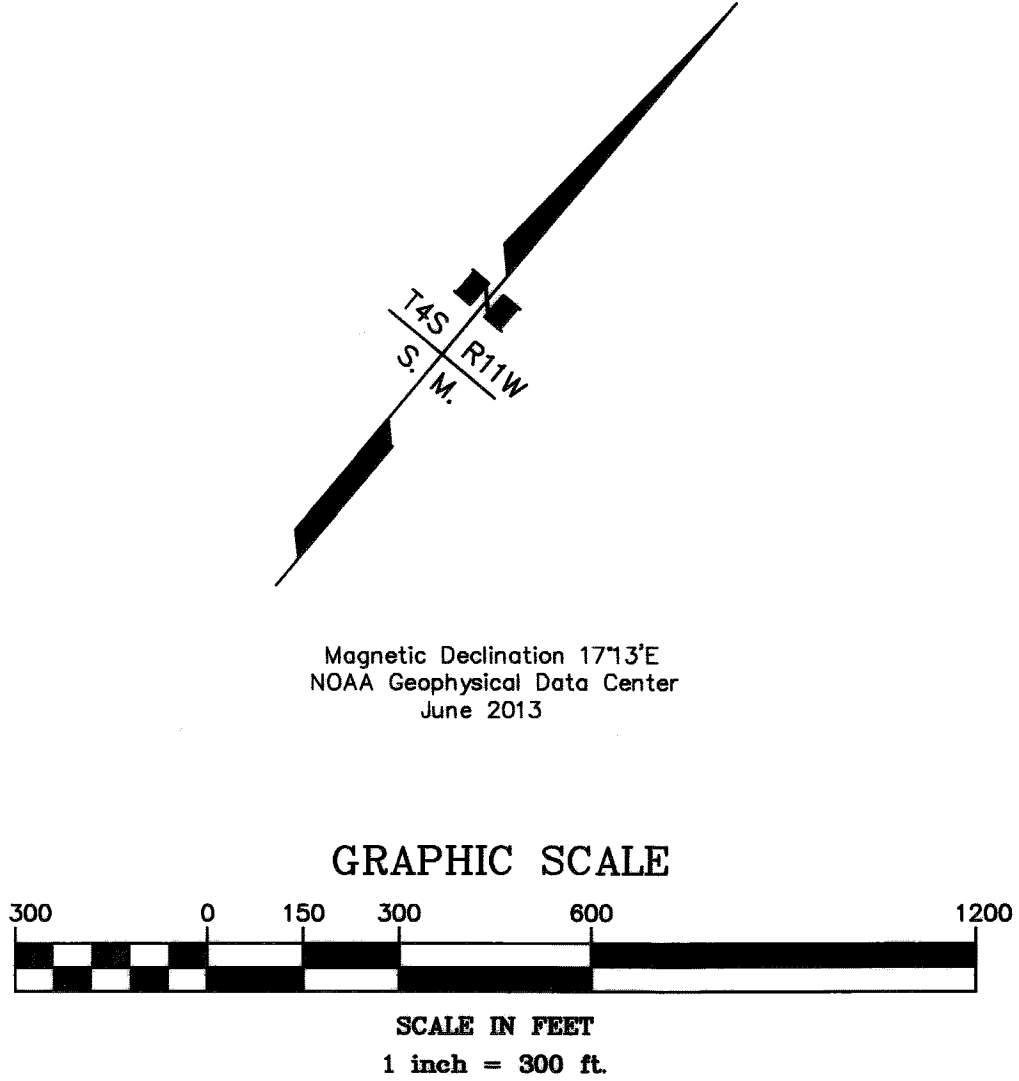
*Heights derived using Static GPS methods.



LEGEND

- GPS Control Point, Set
- BLM Primary Monument, Found
- Secondary Corner, Found
- Monument Number, see Sheets 6 & 7
- Highway Centerline Asbuilt
- Section Line
- Property Line

| RECOVERED MONUMENTATION | | | | |
|-------------------------|-------------|-------------|---|--|
| LOCAL COORDINATES | | | DESCRIPTION | |
| POINT | NORTHING | EASTING | | |
| 821 | 153576.1846 | 183510.0363 | Fd Rbr: NE L2 Falls Creek Estates Unit I | |
| 822 | 153568.7979 | 183436.2566 | Fd Rbr: PC N LINE LI Falls Creek Estates Unit I | |
| 823 | 153497.3269 | 182695.3316 | Fd IP: NW LI Falls Creek Estates Unit I | |
| 824 | 153896.4120 | 185058.1365 | Fd BC[BLM]: C3 L3 S3354 | |
| 825 | 153537.4536 | 184961.1491 | Fd BC[BLM]: C5 LI S4720 | |



Homer Recording District
State Business - No Fee
This survey does not constitute a
subdivision as defined by AS 40.15.900

STATE OF ALASKA
DEPARTMENT OF TRANSPORTATION
&
PUBLIC FACILITIES
Survey Control Diagram
Record Of Survey
AKSAS Project No. 55261
Homer: East End Road MP 12.5
To End & Old East End Road
Located within Sections 26, 27, 33, & 34 T4S 11W,
Sections 5, 7, 8 & 18 T5S R11W and Sections 12 & 13, T5S R12W, S.M., AK

| | | | | | |
|---------|-----|------|---------|-------|-----------|
| DRAWN | SKS | DATE | 8-01-13 | SCALE | 1" = 300' |
| CHECKED | MF | DATE | 8-01-13 | SHEET | 5 OF 7 |

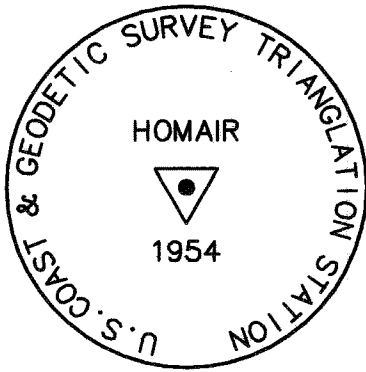
HOMER 2013-18

Sheet 1 Control Monuments



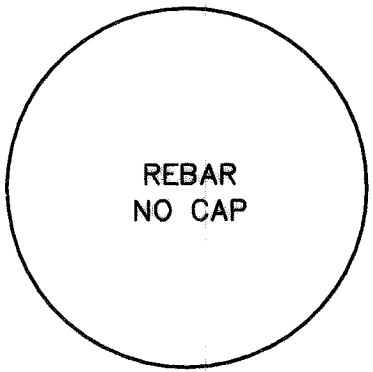
12

Found 9/16" stainless steel rod with 2 1/2" brass donut 0.3' below lip of 4" steel pipe case that is flush with ground. Good condition.



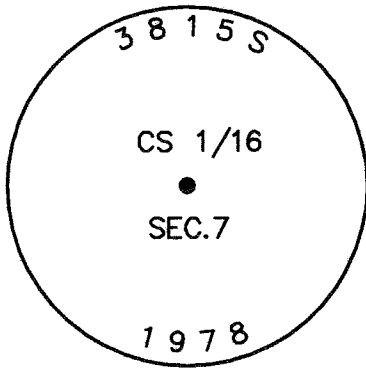
551

Found 3 1/4" brass cap set in concrete, flush with grade, severely scarred, stable condition.



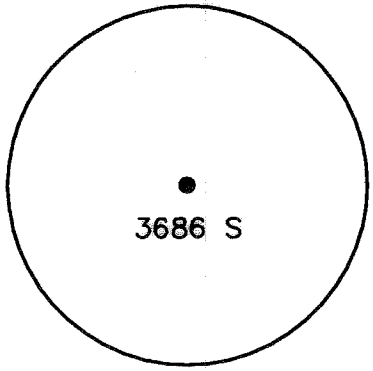
802

Found 5/8" rebar, projecting 0.25' above the ground, no cap. Good condition.



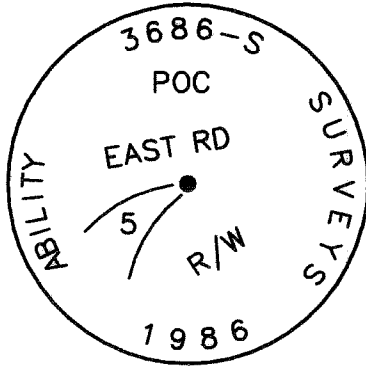
803

Found 2" brass cap on 1" iron pipe, 0.15' below grade. Good condition.



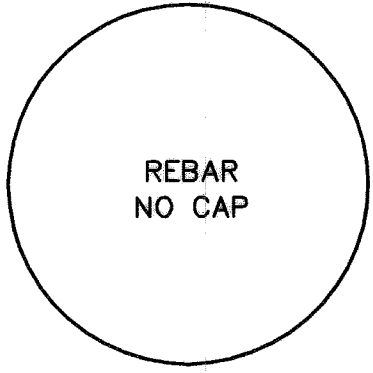
807

Found 1 1/4" yellow plastic cap on 1/2" rebar, 0.3' above grade. Good condition.



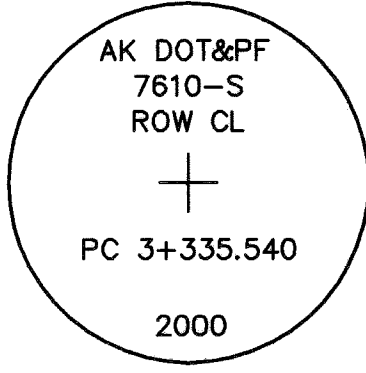
808

Found 2" alum. cap on 5/8" rebar, 0.3' below grade. Good condition.



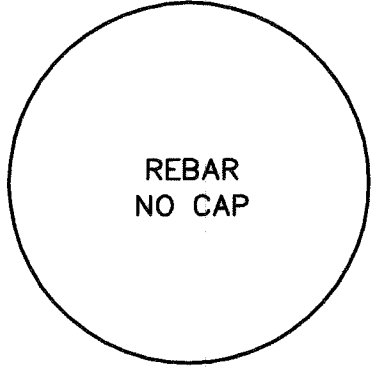
818

Found 5/8" rebar, 0.7' below grade, no cap. Good condition.



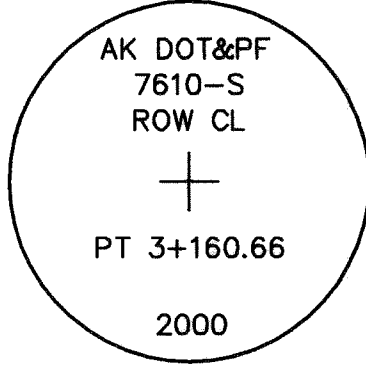
826

Found 2 1/2" brass cap on 1" iron pipe, 0.3' below grade. Good condition.



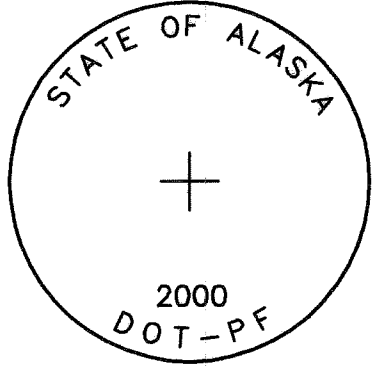
831

Found 5/8" rebar, 0.2' below lip of water valve case that is flush with ground. Good condition.



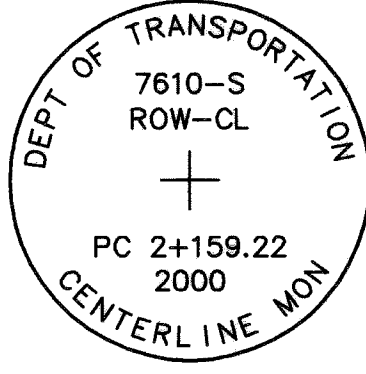
832

Found 2 1/2" brass cap on 1" iron pipe, 0.25' below lip of monument case that is flush with pavement. Good condition. No cover on monument case.



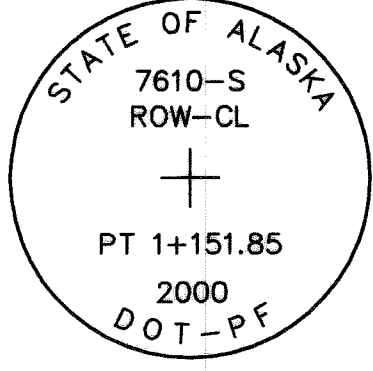
836

Found 2 1/2" brass cap on 1" iron pipe, 0.25' below lip of monument case that is flush with pavement. Most of the cap markings are illegible.



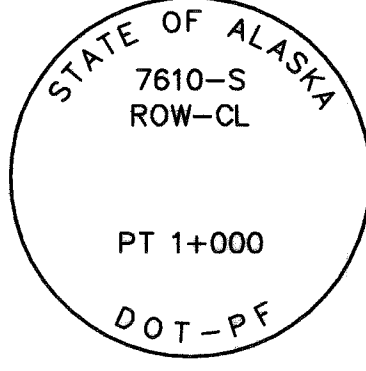
837

Found 2 1/2" brass cap on 1" iron pipe, 0.4' below lip of monument case that is flush with pavement. Good condition.



840

Found 2 1/2" brass cap (incorrectly marked PT) on 1" iron pipe, 0.3' below lip of monument case that is flush with pavement. Good condition.



841

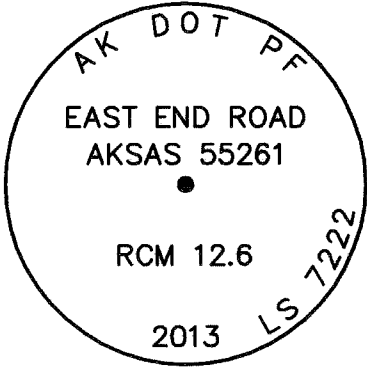
Found 2 1/2" brass cap on 1" iron pipe, 0.25' below lip of monument case that is flush with pavement. Cap markings partially legible.

Sheet 2 Monuments



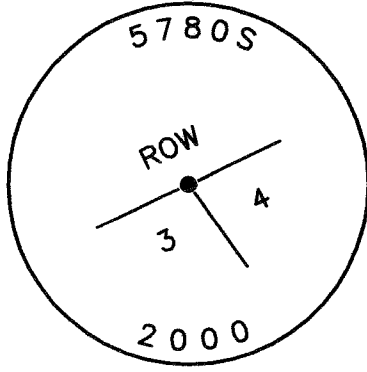
21

Set 2 1/2"x30" alum. post, 29" in the ground, with 3 1/4" alum. cap marked as shown, with a clear magnet at base. Carsonite post N25W, 1.0 ft.



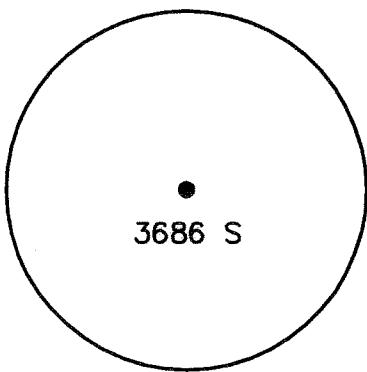
22

Set 2 1/2"x30" alum. post, 30" in the ground, with 3 1/4" alum. cap marked as shown, with a clear magnet at base. Carsonite post South, 1.0 ft.



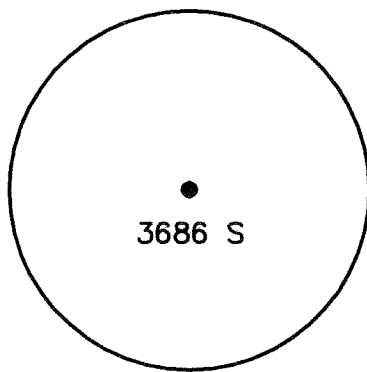
801

Found 2" alum. cap on 5/8" rebar, flush with grade. Cap leaning slightly to southeast; shot center of cap.



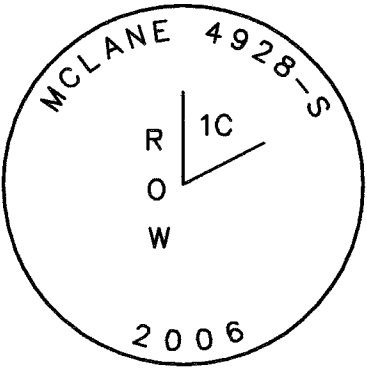
805

Found 1 1/4" yellow plastic cap on 1/2" rebar, flush with grade. Good condition.



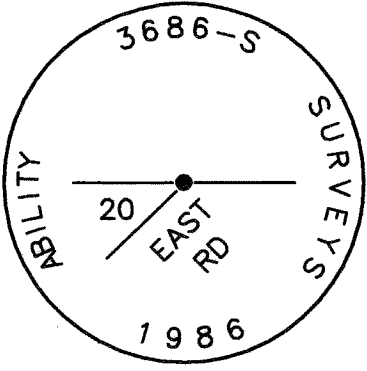
806

Found 1 1/4" yellow plastic cap on 1/2" rebar, 0.25' above grade. Good condition.



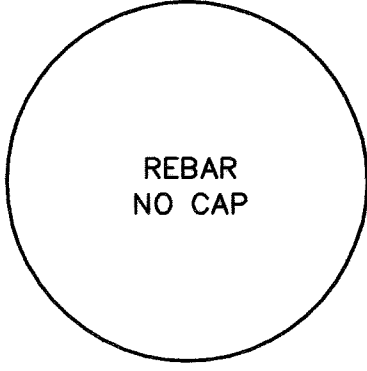
804

Found 2" alum. cap on 5/8" rebar, 0.75' above grade. Good condition.



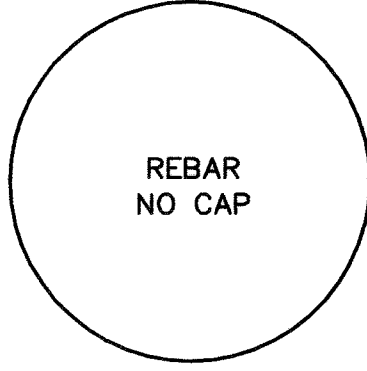
809

Found 2" alum. cap on 5/8" rebar, 0.5' above grade. Good condition.



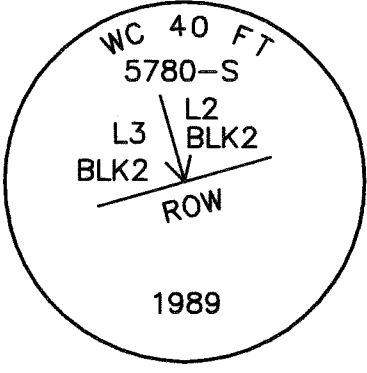
811

Found 5/8" rebar, 1.0' below grade, no cap. Good condition.



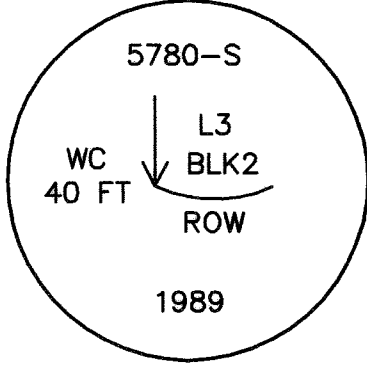
812

Found 5/8" rebar, projecting 0.25' above the ground, no cap. Good condition.



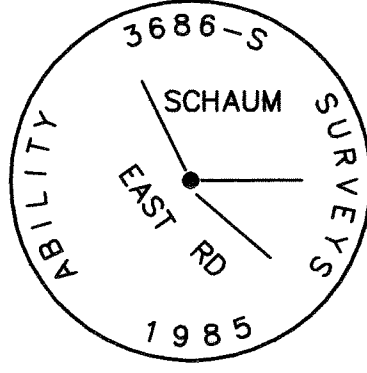
828

Found 2" alum. cap on 5/8" rebar, 0.3' above grade. Good condition.



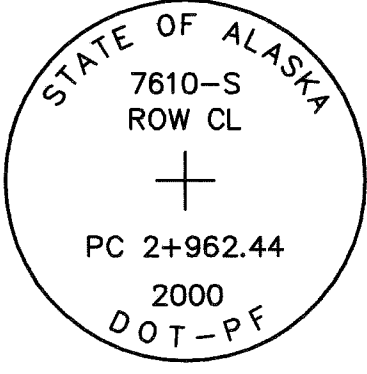
829

Found 2" alum. cap on 5/8" rebar, 0.2' above grade. Good condition.



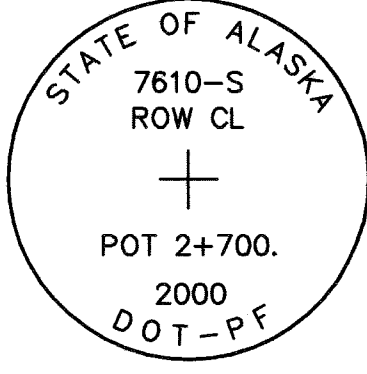
830

Found 2" alum. cap on 5/8" rebar, 0.25' above grade. Good condition.



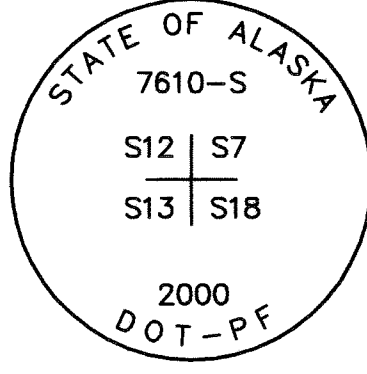
833

Found 2 1/2" brass cap on 1" iron pipe, 0.25' below lip of monument case that is flush with pavement. Good condition.



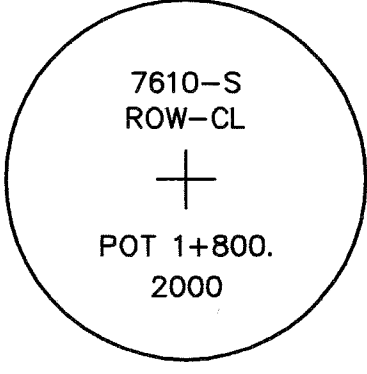
834

Found 2 1/2" brass cap on 1" iron pipe, 0.3' below lip of monument case that is flush with pavement. Good condition.



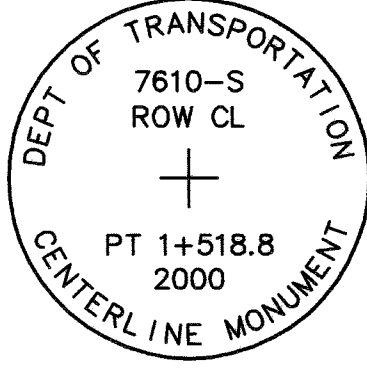
835

Found 2 1/2" brass cap on 1" iron pipe, 0.25' below lip of monument case that is flush with pavement. Cap markings partially legible.



838

Found 2 1/2" brass cap on 1" iron pipe, 0.3' below lip of monument case that is flush with pavement. Cap markings partially legible.



839

Found 2 1/2" brass cap on 1" iron pipe, 0.4' below lip of monument case that is flush with pavement. Good condition.

Homer Recording District
State Business - No Fee
This survey does not constitute a
subdivision as defined by AS 40.15.900

STATE OF ALASKA
DEPARTMENT OF TRANSPORTATION
&
PUBLIC FACILITIES

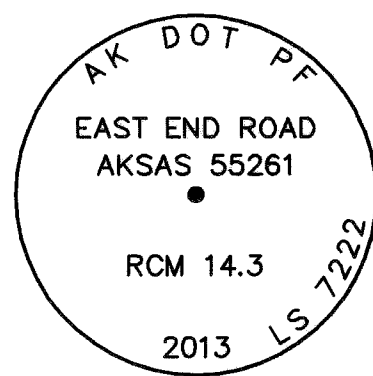
Survey Control Diagram
Record Of Survey
AKSAS Project No. 55261

Homer: East End Road MP 12.5
To End & Old East End Road
Located within Sections 26, 27, 33, & 34 T4S 11W,

| | | | | | |
|---------|-----|------|---------|-------|--------|
| DRAWN | SKS | DATE | 8-01-13 | SCALE | N/A |
| CHECKED | MF | DATE | 8-01-13 | SHEET | 6 OF 7 |

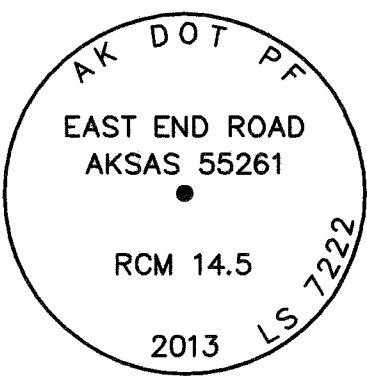
HOMER 2013-18

Sheet 3 Monuments



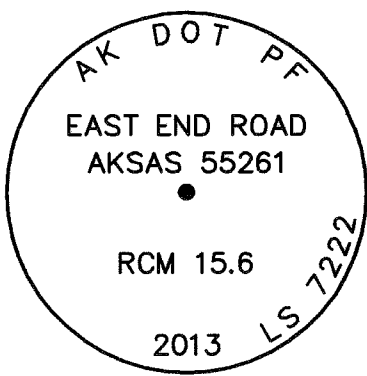
23

Set 2 1/2"x30" alum. post, 29" in the ground, with 3 1/4" alum. cap marked as shown, with a clear magnet at base. Carsonite post S50°E, 1.0 ft.



24

Set 2 1/2"x30" alum. post, 30" in the ground, with 3 1/4" alum. cap marked as shown, with a clear magnet at base. Carsonite post S50°E, 1.0 ft.



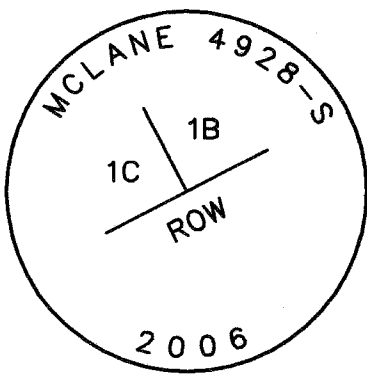
25

Set 2 1/2"x30" alum. post, 29" in the ground, with 3 1/4" alum. cap marked as shown, with a clear magnet at base. Carsonite post South, 1.0 ft.



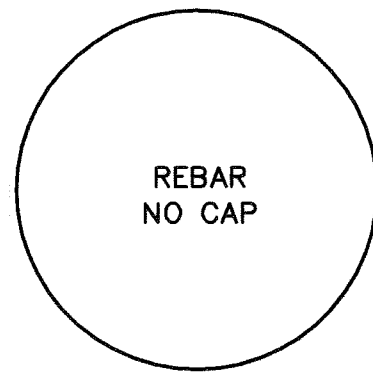
813

Found 1/2" rebar, projecting 0.3' above the ground, no cap. Good condition.



814

Found 2" alum. cap on 5/8" rebar, 0.3' above grade. Good condition.



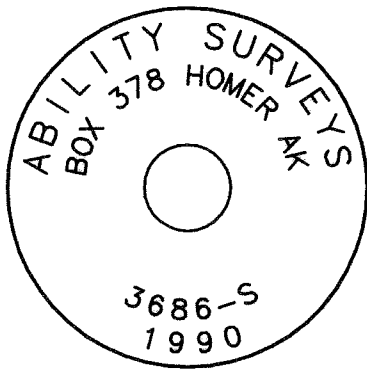
815

Found 1/2" rebar, projecting 0.4' above the ground, no cap. Good condition.



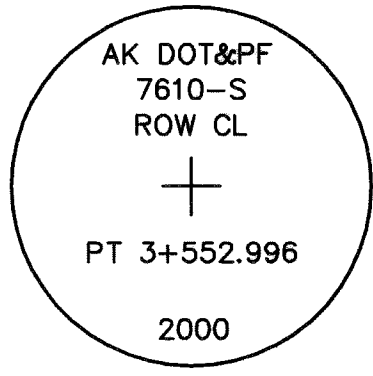
816

Found 1/2" rebar, projecting 0.2' above the ground, no cap. Good condition.



817

Found 2 1/2" red plastic cap on 5/8" rebar, 0.30' above grade. Good condition.



827

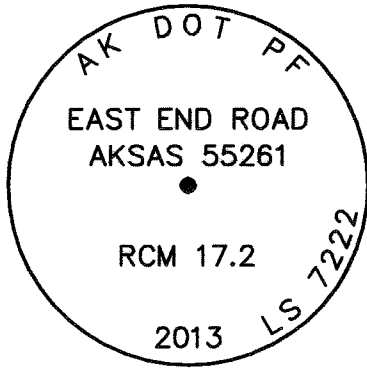
Found 2 1/2" brass cap on 1" iron pipe, 0.4' above grade. Good condition.

Sheet 4 Monuments



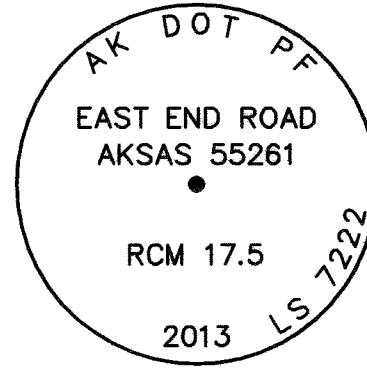
26

Set 2 1/2"x30" alum. post, 29" in the ground, with 3 1/4" alum. cap marked as shown, with a clear magnet at base. Carsonite post S65°E, 1.0 ft.



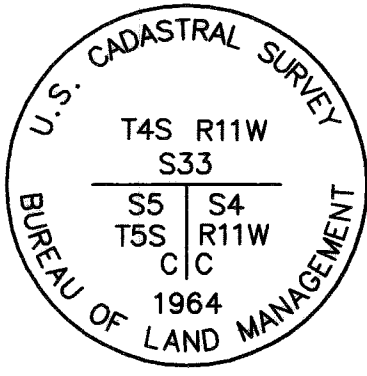
27

Set 2 1/2"x30" alum. post, 29" in the ground, with 3 1/4" alum. cap marked as shown, with a clear magnet at base. Carsonite post N30°W, 1.0 ft.



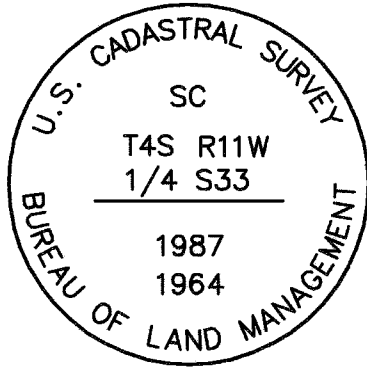
28

Set 2 1/2"x30" alum. post, 29" in the ground, with 3 1/4" alum. cap marked as shown, with a clear magnet at base. Carsonite post N25°W, 1.0 ft.



819

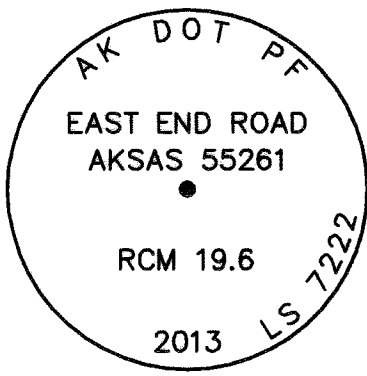
Found 2 1/2" concrete filled iron post, leaning NE in swampy ground, projecting 0.1' above grade, with a 3 1/4" brass cap lying alongside. Plumbed iron post and left brass cap alongside.



820

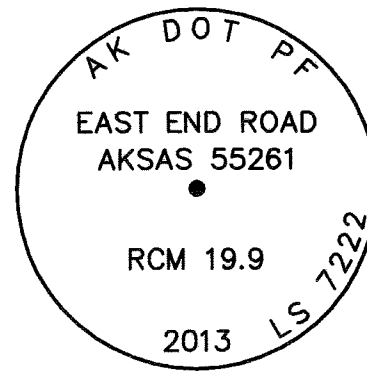
Found 3 1/4" brass cap on 2 1/2" iron post, 0.3' above grade. Good condition.

Sheet 5 Monuments



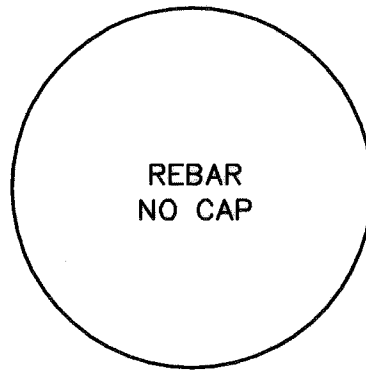
29

Set 2 1/2"x30" alum. post, 30" in the ground, with 3 1/4" alum. cap marked as shown, with a clear magnet at base. Carsonite post N35°E, 1.0 ft.



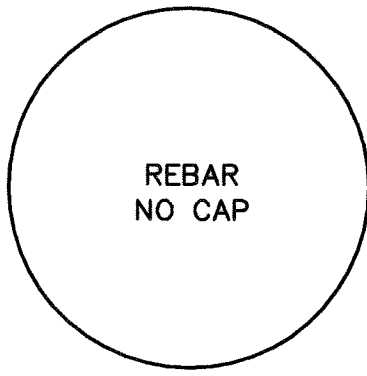
30

Set 2 1/2"x30" alum. post, 30" in the ground, with 3 1/4" alum. cap marked as shown, with a clear magnet at base. Carsonite post South, 1.0 ft.



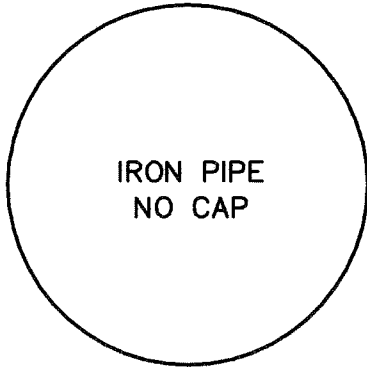
821

Found 1/2" rebar, 0.2' below grade, no cap and bent. Straightened and reset rebar.



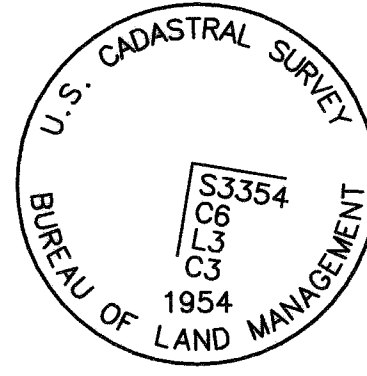
822

Found 1/2" rebar, 0.2' above grade, no cap and bent. Straightened and reset rebar.



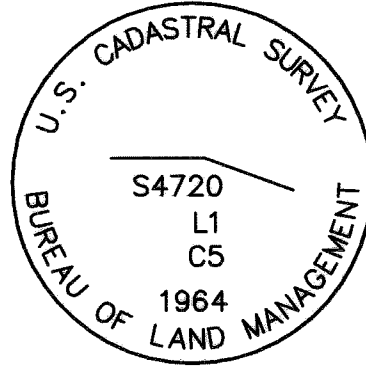
823

Found 1" iron pipe, 0.1' above grade, no cap. Good condition.



824

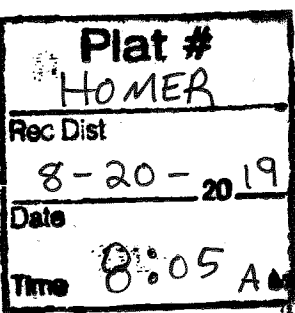
Found 3 1/4" brass cap on 2 1/2" iron post, 0.4' above grade, leaning to SE and alongside wooden fence post. Unable to straighten iron post, plumbed over base of iron post for position.



825

Found 3 1/4" brass cap on 2 1/2" iron post, flush with grade. Good condition.

2013-18



Homer Recording District
State Business - No Fee
This survey does not constitute a
subdivision as defined by AS 40.15.900

STATE OF ALASKA
DEPARTMENT OF TRANSPORTATION
&
PUBLIC FACILITIES

Survey Control Diagram
Record Of Survey
AKSAS Project No. 55261

Homer: East End Road MP 12.5
To End & Old East End Road

Located within Sections 26, 27, 33, & 34 T4S 11W,
Sections 5, 7, 8 & 18 T5S R11W and Sections 12 & 13, T5S R12W, S.M., AK

| | | | | | |
|---------|-----|------|---------|-------|--------|
| DRAWN | SKS | DATE | 8-01-13 | SCALE | N/A |
| CHECKED | MF | DATE | 8-01-13 | SHEET | 7 OF 7 |