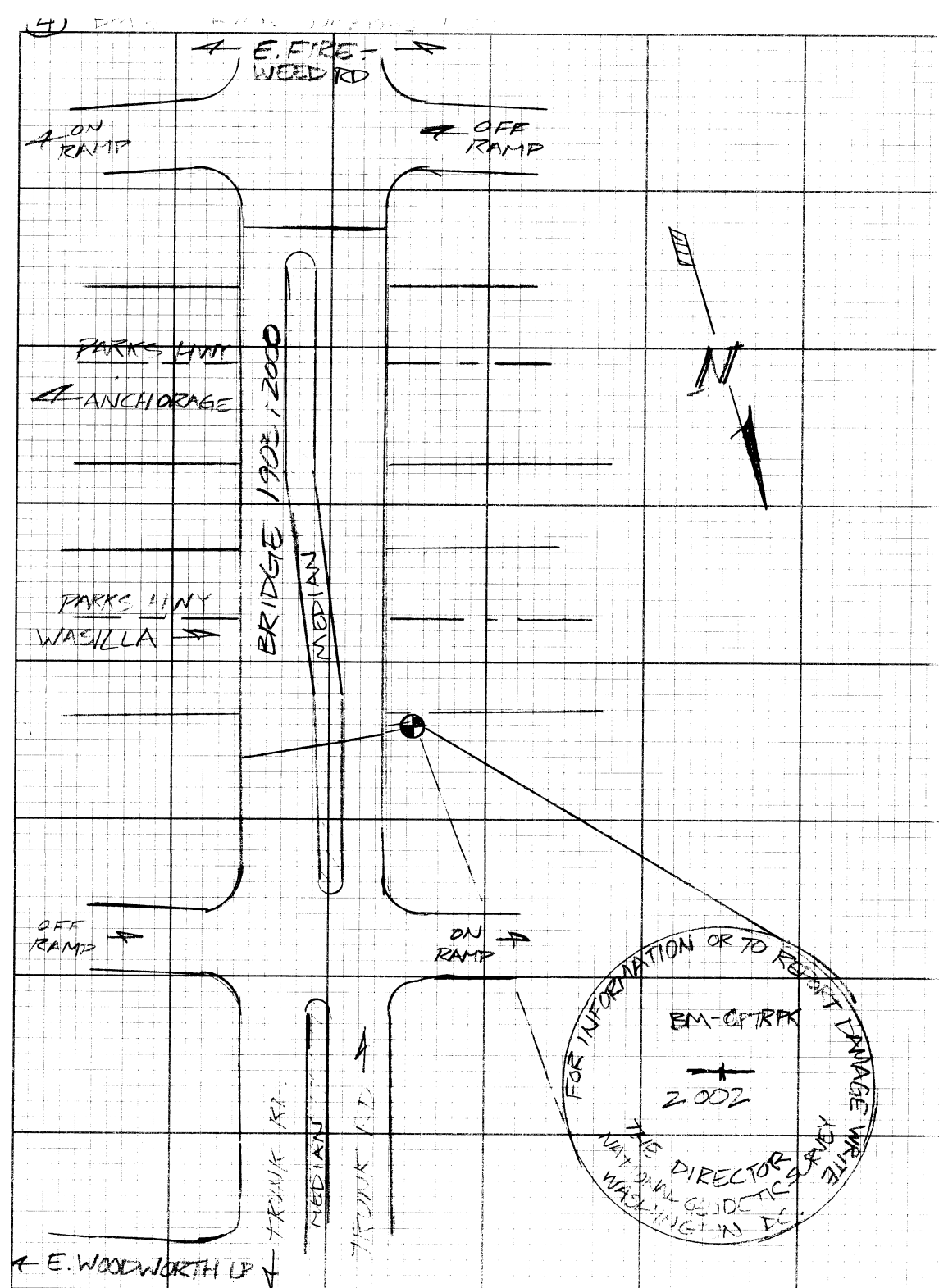


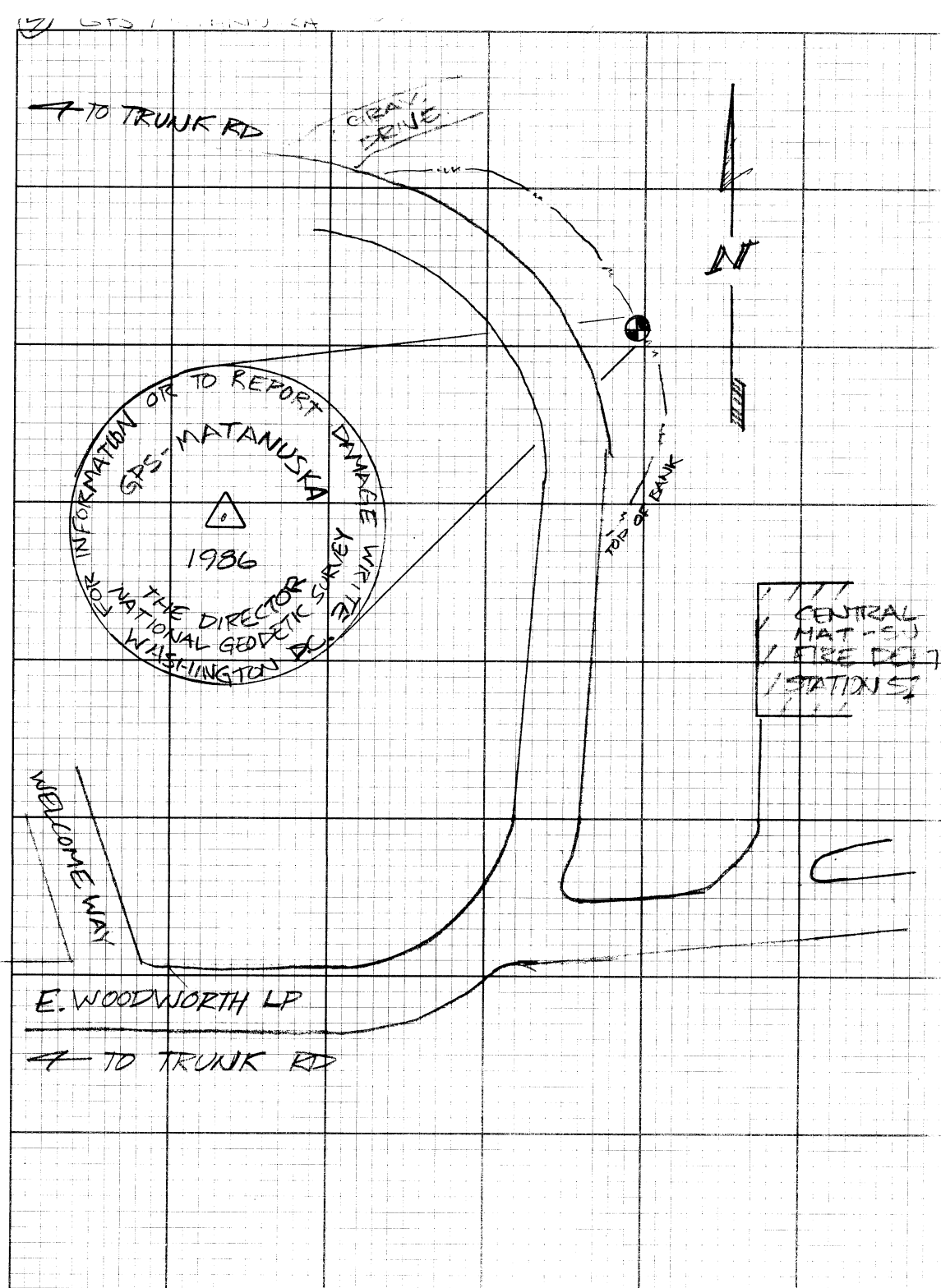
GLENN  
34-42

CONTROL  
REFERENCES

# CONTENTS

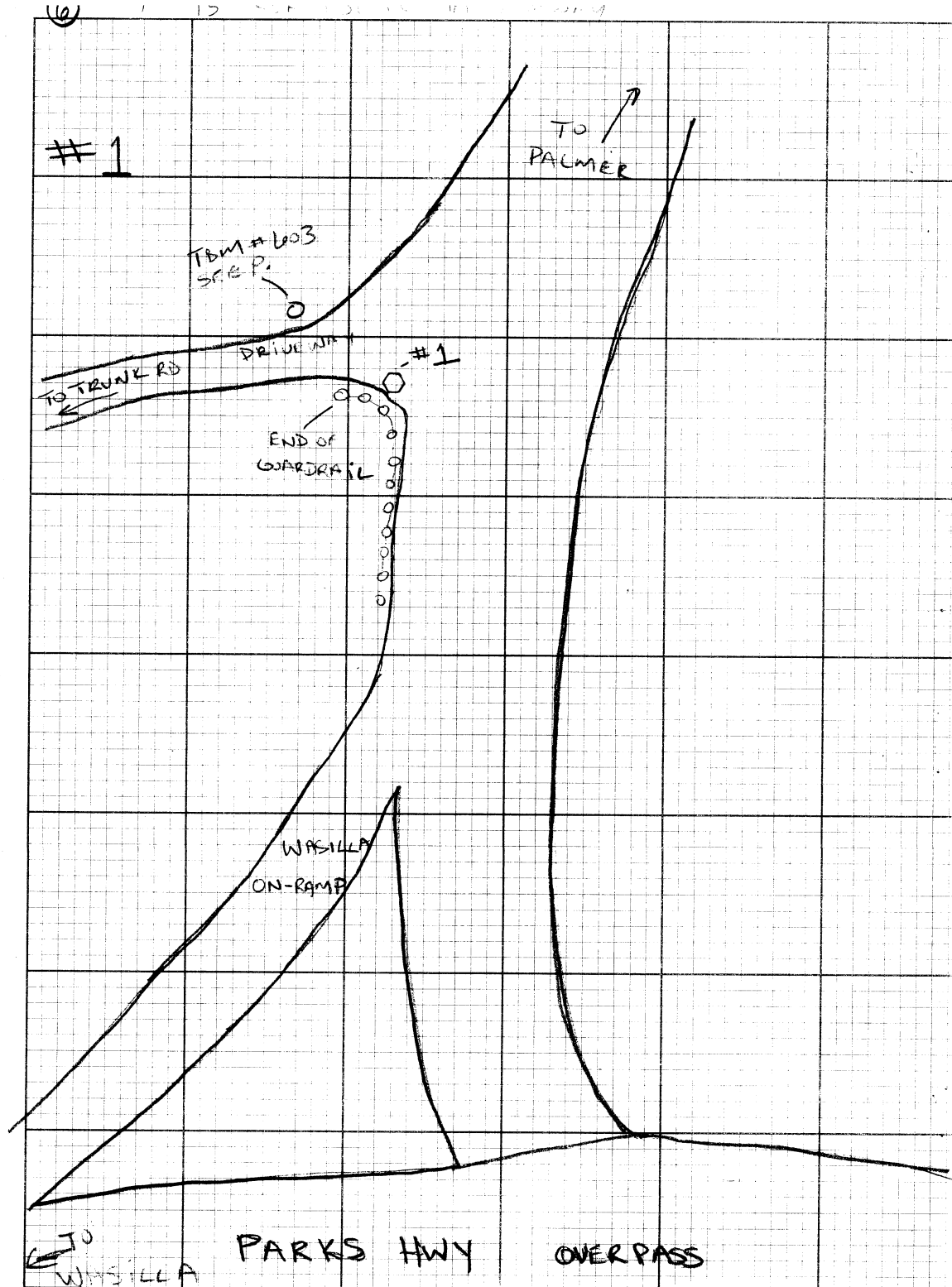


BM-OPTRPK is a 3 1/2" BRASS CAP set flush in the NORTH WESTERLY most concrete ABUTMENT OF BRIDGE #1902, 2000, crossing over the PARKS HIGHWAY and is part of TRUNK RD.

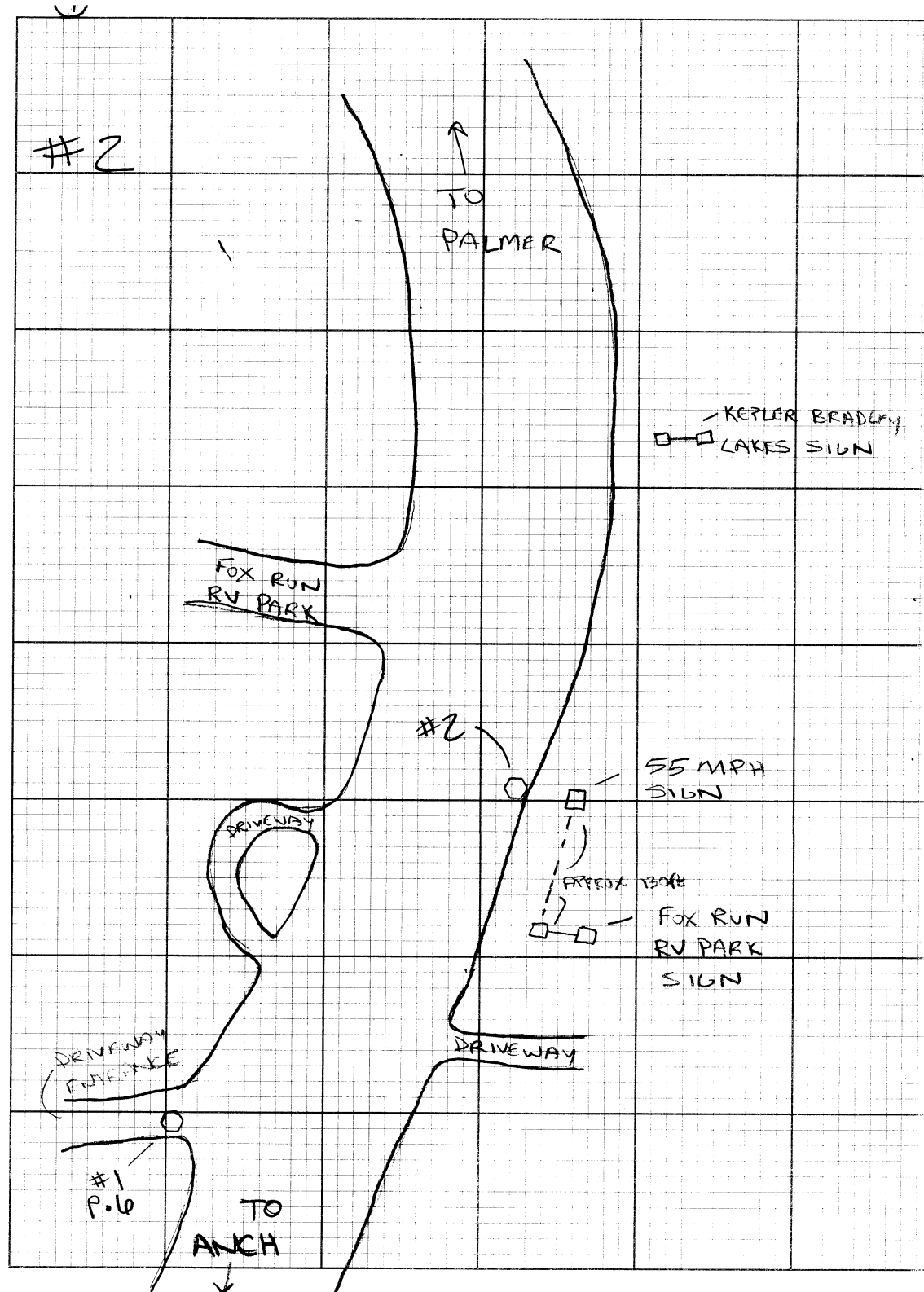


GPS - MATANUSKA is 3" BRASS CAP  
on the EASTERLY SIDE of E. WOODWAY  
LOOP on the top of bank



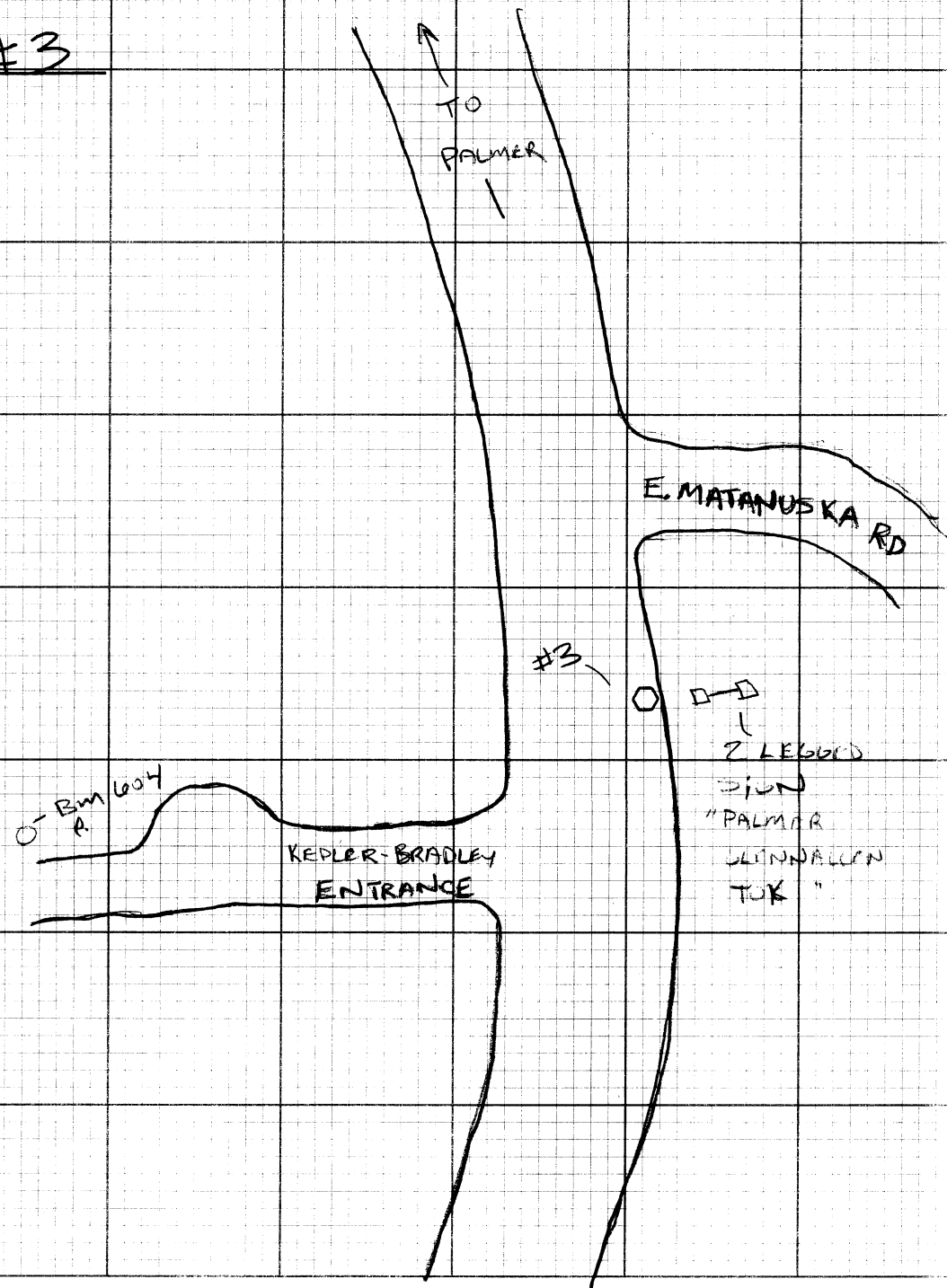


#1 IS A 5/8" X 15" RBR & DOT PC SET IN PAVEMENT IN THE SW CORNER OF THE 1ST DRIVEWAY ENTRANCE NORTH OF THE GLENN-PARKS INTERCHANGE ON THE NORTH SIDE OF THE GLENN HWY. LIES 4.3 MILES SOUTH ON THE GLENN HWY FROM THE SOUTH PALMER TRAIN STATION.

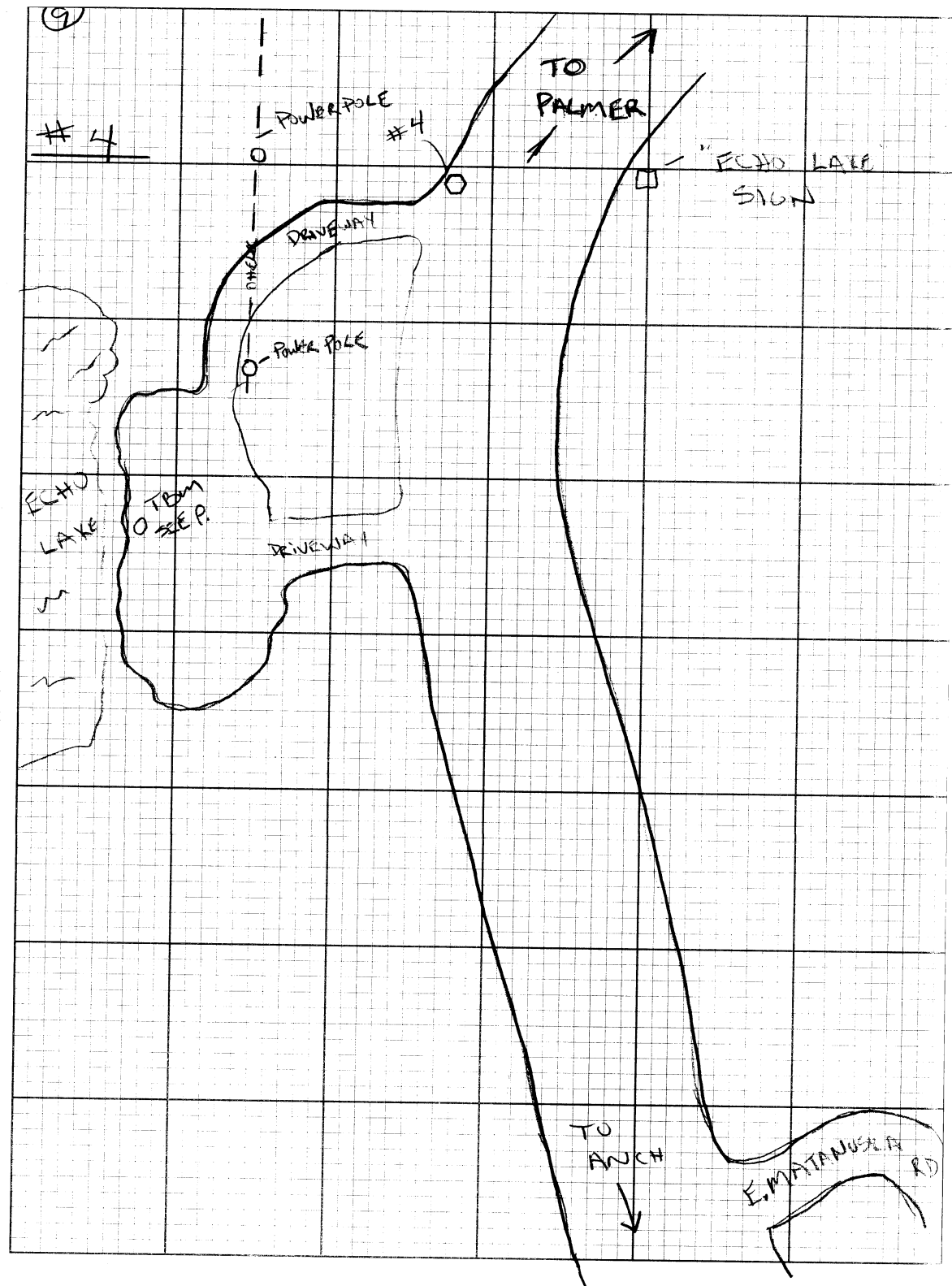


"2 IS A  $\frac{5}{8}$ " X 15" RBR W/ DOT PC SET IN PAVEMENT ON THE SOUTH SIDE OF THE GLENN HWY DIRECTLY ADJACENT TO A 55 MPH SIGN & APPROX 0 $\frac{1}{4}$  FROM EDGE OF PAVEMENT AND LIES 4.0 MILES SOUTH ON THE GLENN HWY FROM THE SOUTH PALMER TRAIN STATION

#3



#3 IS A  $5/8$ " X 15" RBR & DOT PC SET IN PAVEMENT ON THE S. SIDE OF THE GLENN HWY APPROX 2ft FROM EP. AND LIES 3.8 MILES SOUTH ON THE GLENN HWY FROM THE SOUTH PALMER TRAIN STATION



⑨

114 IS A 5/8" X 16" RER AND DOT PC SET IN PAVEMENT ON THE NORTH SIDE OF THE GLENN HWY APPROX 1<sup>2</sup> FE FROM EP & DIRECTLY ACROSS FROM THE "ECHO LAKE" SIGN AND LIES 3.1 MILES SOUTH ON THE GLENN HWY FROM THE SOUTH PALMER TRAIN STATION.

10

#5

UNFINISHED  
HOUSE

FUNNY FARM  
BAR

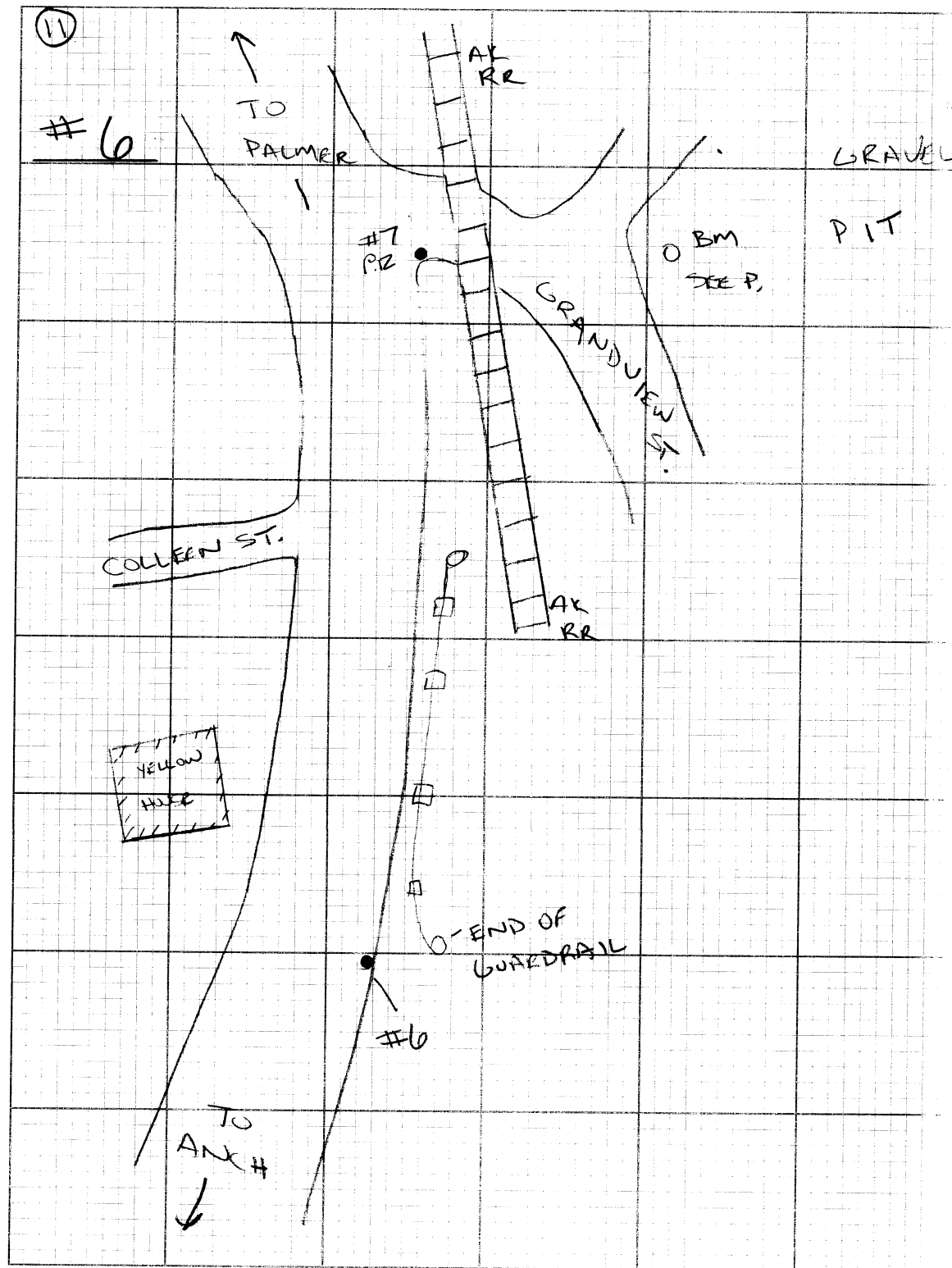
TO  
PALMER

CHIELO  
CHIELO  
END  
OF WARDRAIL  
WARDRAIL

TO  
DIXIE

10

#5 IS 5/8" X 6" RBB W/DOT PC DOWN 0' IN DIRT SHOULDER APPROX 2 1/2 SOUTH OF SOUTHERN EP OF GLENN HWY. AND LIES 2.5 MILES SOUTH ON THE GLENN HWY FROM THE SOUTH PALMER TRAIN STATION



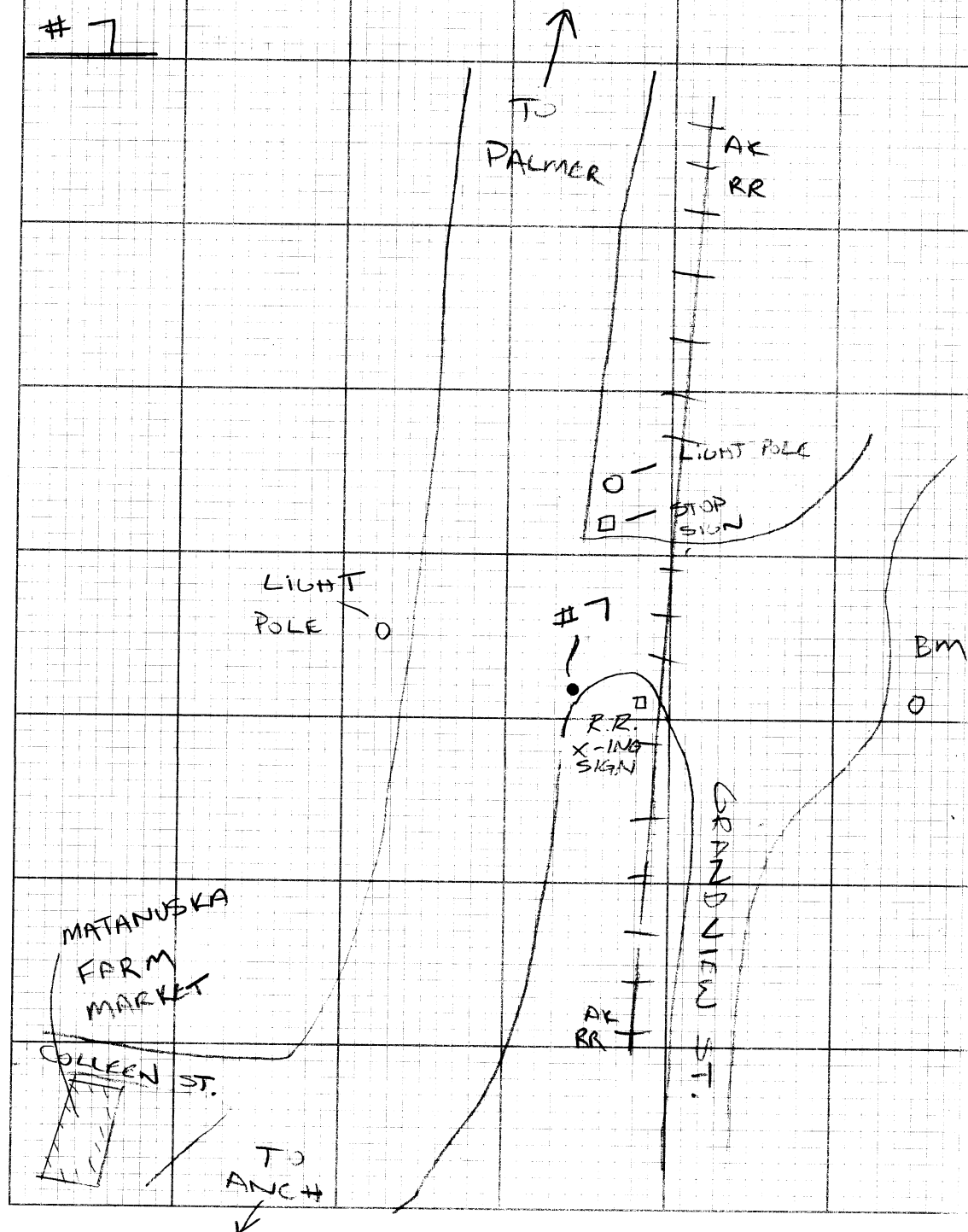
⑪

#6 IS A REBAR & PC SET IN PAVEMENT ON THE SOUTH SIDE OF THE HWY APPROX 1.3 ft FROM EDGE OF PAVEMENT AND 9.5' FROM THE LAST POST IN GUARD RAIL AND LIES 2.4 MILES SOUTH ON THE GLENN HWY FROM THE SOUTH PALMER TRAIN STATION.



(12)

# 7

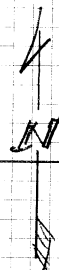


(12)

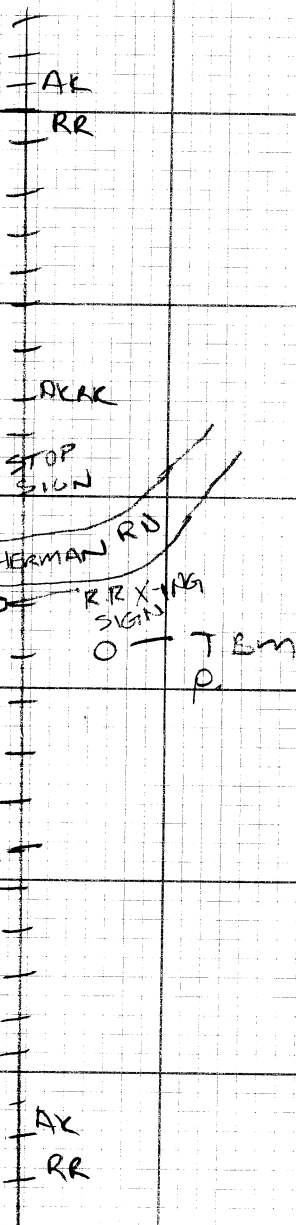
#7 IS A REBAR & PC SET IN EDGE OF PAVEMENT  
 THE WESTERLY SIDE OF THE ENTRANCE TO  
 GRANDVIEW ST ON THE SOUTH SIDE OF THE  
 GLENN HWY IS 25.1 FT W'LY OF R.R. CROSSING  
 SIGN & 144.7 FT S'LY OF STOP & STREET SIGN  
 AND LIES 2.2 MILES SOUTH ON THE GLENN  
 HWY FROM THE SOUTH PALMER TRAIN  
 STATION

⑬

#8



MATSO VALLEY  
SPORTSMEN  
SHOOTING  
RANGE



⑬

"8 IS A REBAR & PL SET 3.5' FROM EP  
THE SOUTH SIDE OF THE ENTRY TO HERMAN RD  
ON THE EAST SIDE OF THE GLENN HWY  
APPROX 30.4 FE W'LY OF R.R. X-ING SIGN  
& 36.8' FE S'LY OF STOP SIGN AND LIES  
1.6 MILES SOUTH ON THE GLENN HWY FROM  
THE SOUTH PALMER TRAIN STATION.



(14)

#9

TO  
PALMER  
↑AK  
RRAK  
RRSTOP  
SIGN

#9

OUTER SPRINGER  
LOOPR.R.  
X-ING  
SIGNTO ANCH  
↓AK  
RRHUSQUAVARNA  
SHOPTO BM  
P.  
→

#9 IS A REBAR & PC SET IN 1.0' FROM EP  
THE NORTH END OF THE ENTRANCE TO OUTER  
SPRINGER LOOP ON THE EAST SIDE OF THE  
GLENN HWY. IS APPROX 0.77 FROM THE EP.

#8 FROM STOP SIGN & 56.7' FROM  
R.R. CROSSING SIGN AND LIES 1.1 MILES  
SOUTH ON THE GLENN HWY FROM THE  
SOUTH PALMER TRAIN STATION.

(14)

15

#10

TO  
PALMER

AK  
RR

BLUNCK ST.

SEVENTH  
DAY  
ADVENTIST  
CHURCH

LIGHT  
POLE

STOP  
SIGN

#10

INNER SPRINGER LP

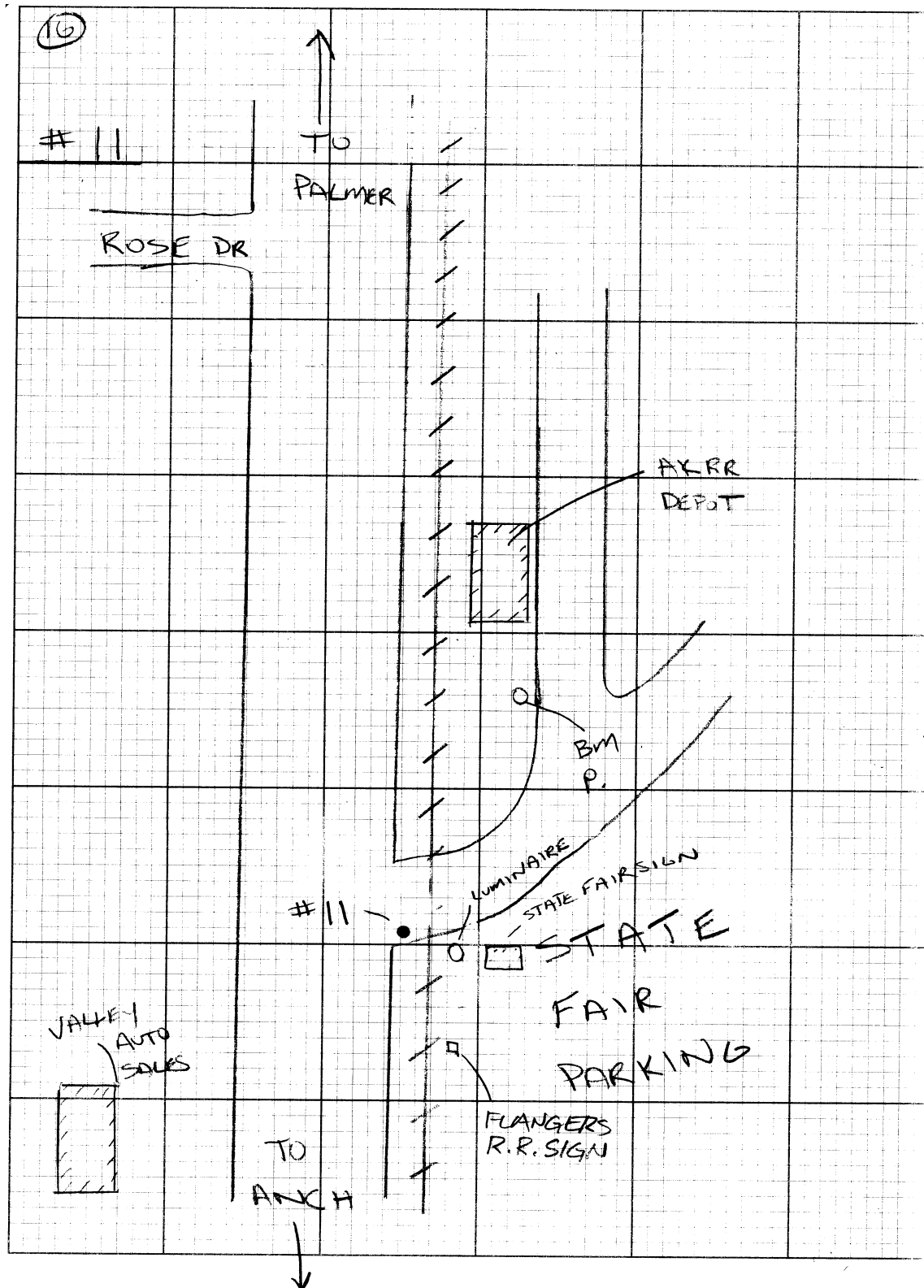
CIENNA WAY

TO  
ANCH

AK  
RR

15

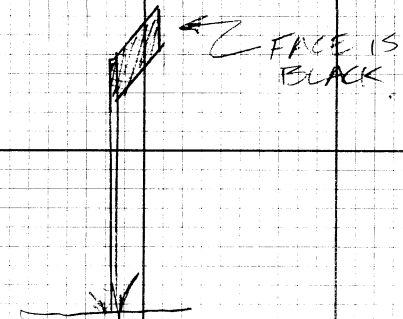
#10 IS A REBAR & PC SET 2.5' FROM EDGE OF PAVE.  
NORTH SIDE OF THE ENTRANCE TO INNER SPRINGER  
LOOP ON THE EAST SIDE OF THE GLENN HWY IS  
14.6 FE FROM THE STOP SIGN & 7.5' FROM THE  
LIGHT POLE. AND LIES 0.6 MILES SOUTH ON  
THE GLENN HWY FROM THE SOUTH PALMER  
TRAIN STATION.



①⑥

" 11 IS A REAR X PC SET 0.5' FROM EDGE OF PAV. THE SOUTH SIDE OF THE ENTRANCE TO THE AK STATE FAIR PARKING LOT ON THE EAST SIDE OF THE GLENN HWY IS 112.0' FROM FLANGER R.R. SIGN & 73 FE FROM A LUMINAIRE ACROSS THE RAILROAD TRACKS

NOTE  
FLANGERS R.R. SIGN  
LOOKS LIKE THIS:



(17)

# 12

COLONY  
EXTENSION↑  
TO  
PALMER

SBS

INNER SPRINGER LOOP RD

AKRR

VFW

AK  
CHOKE  
INN  
HOTEL

#12

0000

3 LEGGED SIGN  
"INNER SPRINGER LOOP"

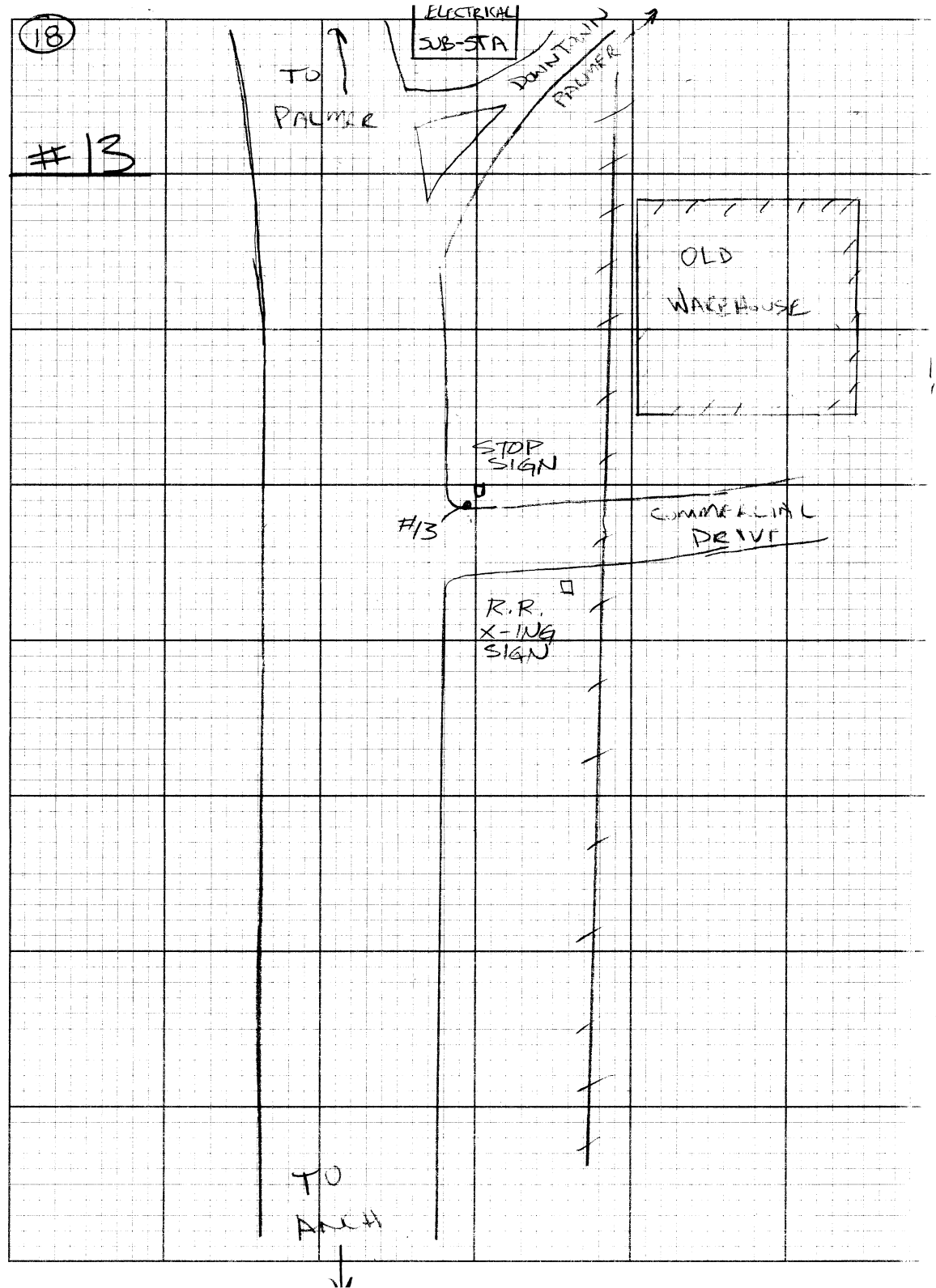
AKRR

↓  
TO  
ANCH

(17)

#12 IS A REBAR & PC SET IN EDGE OF PAVEMENT ON THE EAST SIDE OF THE GLENN HWY NEAR THE START OF THE TURN LANE FOR INNER SPRINGER LOOP RD. RBR IS SET ADJACENT TO THE 3 LEGGED

INNER SPRINGER LOOP SIGN & IS 12.3 FT FROM THE 1ST SIGN LEG. AND LIES 0.4 MILES NORTH ON THE GLENN HWY FROM THE SOUTH PALMER TRAIN STATION.



#13 IS A REBAR SET 1.3' FROM EP  
THE EAST SIDE OF THE GLENN HWY ON THE  
NORTH SIDE OF THE ENTRANCE TO COMMERCIAL  
DRIVE. 7.0' FROM STOP SIGN & 52.0'  
FROM R.R. CROSSING SIGN. LIES 0.9 MILES  
NORTH ON THE GLENN HWY FROM THE  
SOUTH PALMER TRAIN STATION.

(19)

#14

↑  
TO  
PALMER

TESORO

MIDAS

LED  
LUCAS  
SUBSTATION

134.5'  
LUM ON  
FMC COR.

#14

13.5'  
STOP SIGN

↑  
TO  
DOWNTOWN  
PALMER

↑  
TO  
ANCHORAGE

(19)

#14 IS A REBAR SET IN <sup>EDGE OF</sup> PAVEMENT ON THE EAST SIDE OF THE GLENN HWY IN THE NORTH SIDE OF THE ENTRANCE-WAY TO THE GLENN HWY FROM DOWNTOWN PALMER. NAIL IS SET APPROX

12' FROM THE EP & 13.5' FROM THE STOP SIGN, AND LIES 1.1 MILES NORTH ON THE GLENN HWY FROM THE SOUTH PALMER TRAIN STATION



(20)

#15

STATE  
HWY #1  
SOUTH  
ROAD  
SIGNTO  
PALMER

B MEDIAN

LUM

201.5

UNITED  
RENTALS

#15

201.4

SCHUCKS  
AUTO  
SUPPLYTO  
ANCH

TESORO

(20)

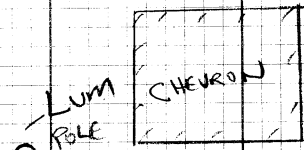
#15 IS A RRR & PL SET 1.6' FROM EP ON THE  
EAST SIDE OF THE GLENN HWY IN THE SOUTH SIDE  
OF THE ENTRANCE TO UNITED RENTALS. IS  
22' FROM THE EP. AND LIES 1.3 MILES  
NORTH ON THE GLENN HWY FROM  
THE SOUTH PALMER TRAIN STATION.

201.5  
201.4

(21)

#16

↑  
TO  
SUTTON



○ LUM  
POLE

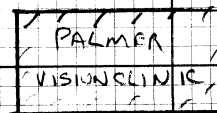
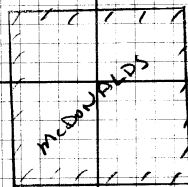
○ CROSSWALK  
POLE

#16

PALMER-WASILLA  
HWY

← TO WASILLA

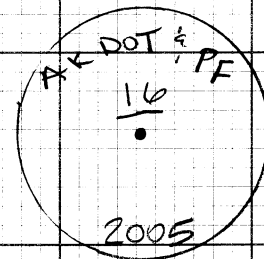
EVERGREEN  
AVE



TO  
ANCH  
↓

(21)

#16 IS A 2 1/2" DOT BC GROUTED INTO  
CONCRETE SIDEWALK IN THE NE QUADRANT  
OF THE INTX OF THE GLENN HWY &  
PALMER-WASILLA HWY. AND LIES 1.6 MILES  
NORTH ON THE GLENN HWY FROM THE  
SOUTH PALMER TRAIN STATION.



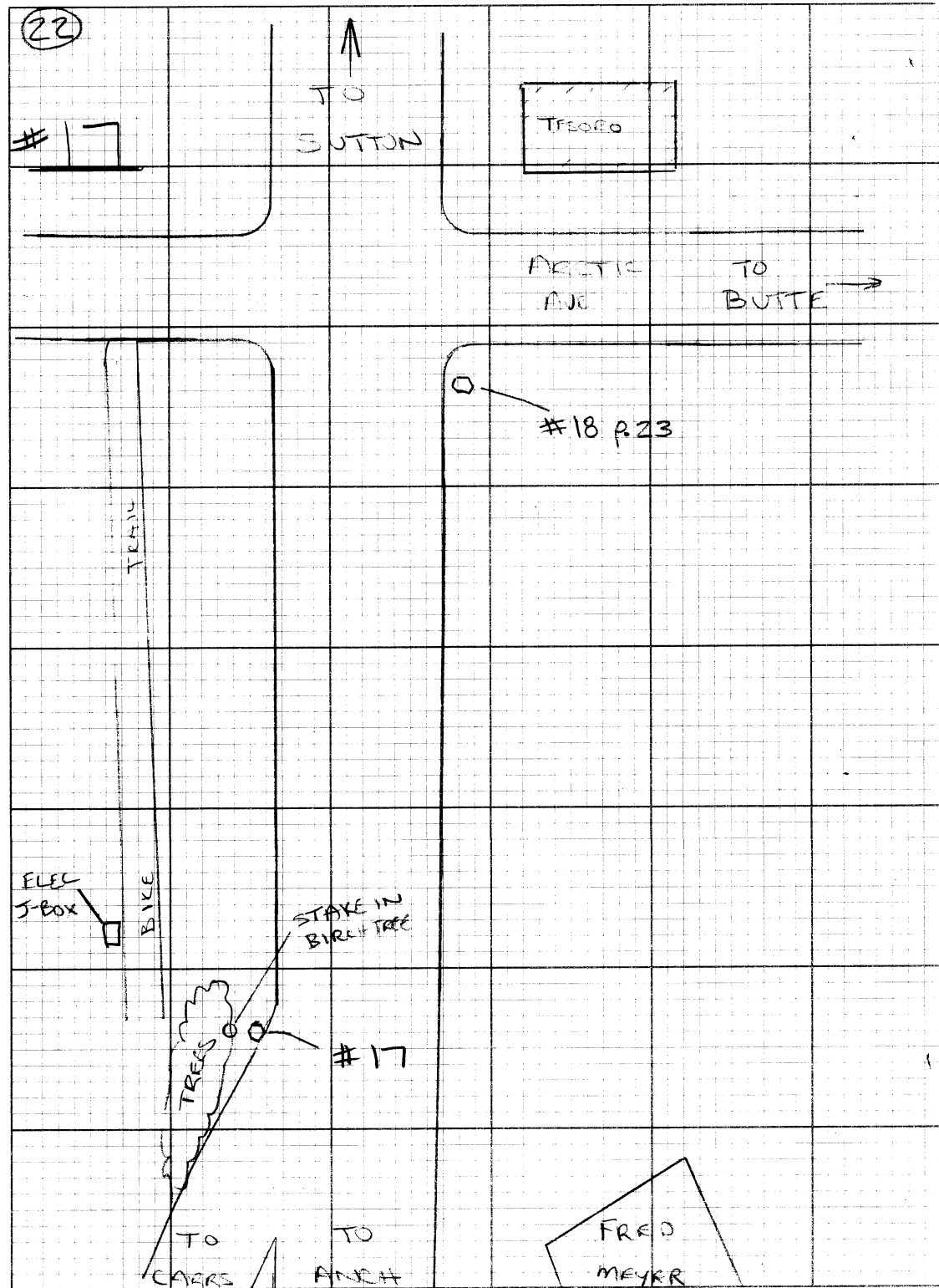
CROSSWALK POLE IS 9 ft

SIGNAL POLE IS 31 ft

TBC IS 43



(22)



(22)

#17 IS A  $5\frac{5}{8}$ " x " RBR DOT PC SET IN EP ON THE WEST SIDE OF THE GLENN HWY NEAR THE EXIT RAMP TO CARRS. A STAKE IN A 10" BIRCH IS 29 ft E. THERE IS 0-4 ft, AND LIES 1.8 MILES NORTH ON THE GLENN HWY FROM THE SOUTH PALMER TRAIN STATION.

(23)

#18

↑  
TO  
BUTTE

TESORO

W. ARCTIC AVE

SIGNAL POLE

CROSSWALK POLE

#18

TO  
BUTTE  
→

BIKE TRAIL

PIONEER MOTEL

TBM  
"FARM"  
P.

BLUEBERRY ST.

#17  
P.22

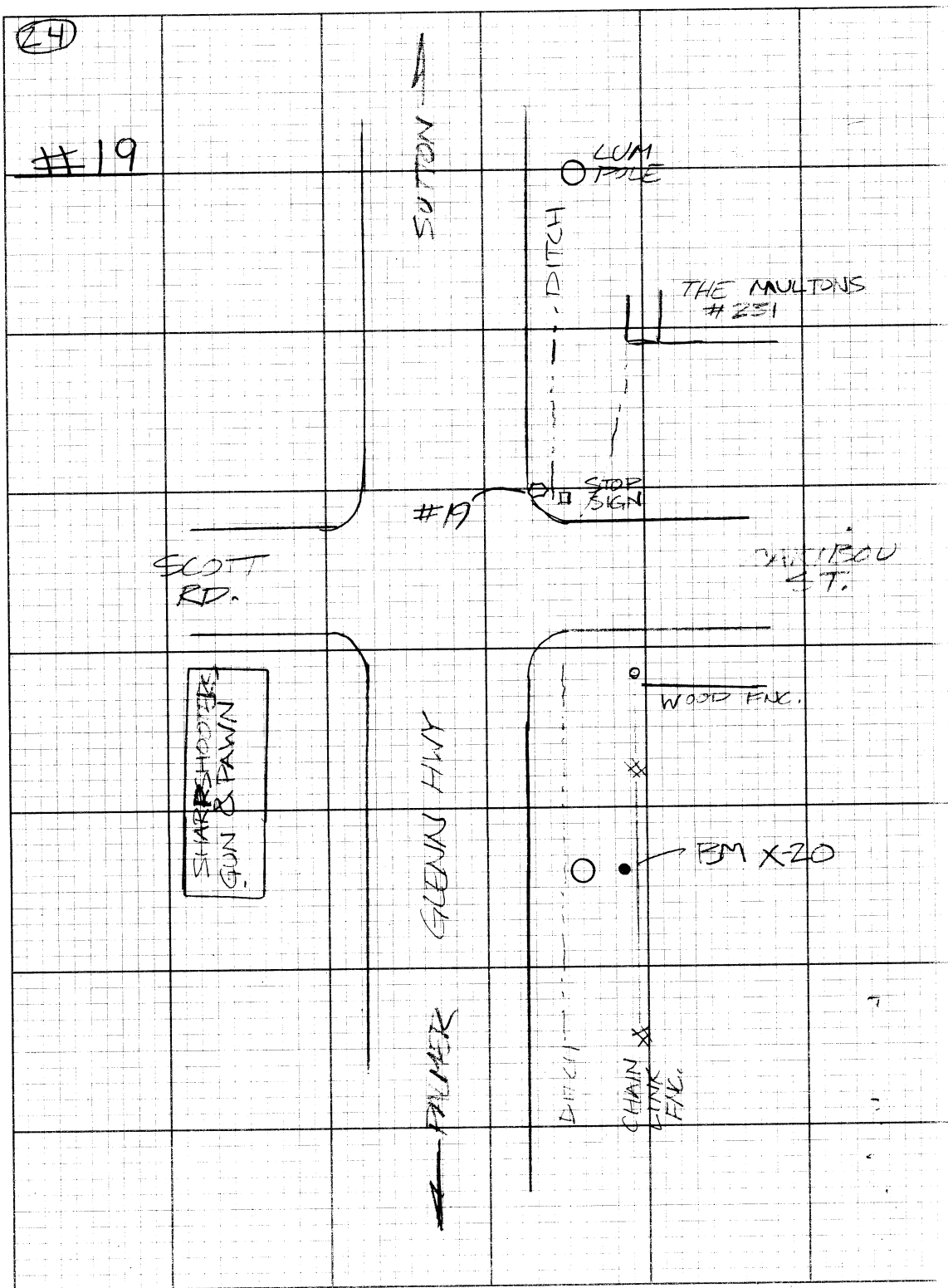
TO  
PALMER  
↓

TREES

(23)

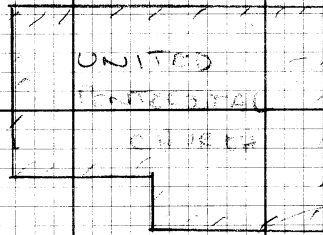
#18 IS A  $5\frac{5}{8}$  x 24" RBR  $\frac{1}{2}$  DOT PC SET IN DIRT @ THE SE CORNER OF THE HANDICAP RAMP MEETS THE PAVEMENT IN THE SE QUADRANT OF THE INTX OF THE GLENN HWY & ARCTIC AVE. CAP IS SET 11 FE SW OF PEDESTRIAN CROSSWALK SIGNAL POLE. AND LIES 2.1 MILES NORTH ON THE GLENN HWY FROM THE SOUTH PALMER TRAIN STATION

#19 IS A 5/8" x 24" R.R. DOT SET IN DIRT SHOULDER JUST OFF E.P. IN THE NE QUADRANT OF THE INTX OF THE GLENN HWY & CARIBOU ST.; 0.7' FROM E.P. & 15.0' FROM STOP SIGN ON CARIBOU ST.; LIES 2.4 MILES NORTH ON THE GLENN HWY FROM THE SOUTH PALMER TRAIN STATION.



(25)

#20

TO  
SUTTON  
↑

#20

STOP SIGN

△ - FIRE HYDRANT

MARSH AVE

ALBRECHT AVE

TO  
PALMER  
↓

#20 IS A  $5\frac{1}{8}$ ' X 30' RBR: DOTPC SET IN THE NE QUADRANT OF THE INTX OF THE GLENN HWY & ALBRECHT AVE. THE CAP IS SET 0' FROM TBC & 23 FT FROM THE STOP SIGN. CAP IS SET IN GRASS PAST TBC; LIES 2.9 MILES NORTH ON THE GLENN HWY FROM THE SOUTH PALMER TRAIN STATION.

(25)

(26)

#21

FISH HOOK RD

#22 P21

STOP  
SIGN

BM K-87  
RESET

1991

BM K-87  
RESET

1997

GUN  
WIRE

PP  
W/TRANS  
"PW 64"

DRIVEWAY

LARGE  
WHITE  
WATER  
TANK

TO  
PALMER

TO  
SUTTON

CHIEF

POWER POLE

#21

#21 IS A 5/8" X 30" RBR W/ DOT PC SET

IN DIRT SHOULDER IN THE EAST SIDE OF THE  
GLENN HWY ACROSS THE HWY FROM A POWER POLE  
W/ TRANSFORMER LABELED "PW-64" & 344

AWAY FROM THE EDGE OF PAVEMENT; LIES 3.4  
MILES NORTH ON THE GLENN HWY FROM  
THE SOUTH PALMER TRAIN STATION



(27)

#22

FISH HOOK  
ROADSTOP  
SIGNBM K-87  
RESET  
1991BM K-87  
RESET  
1969

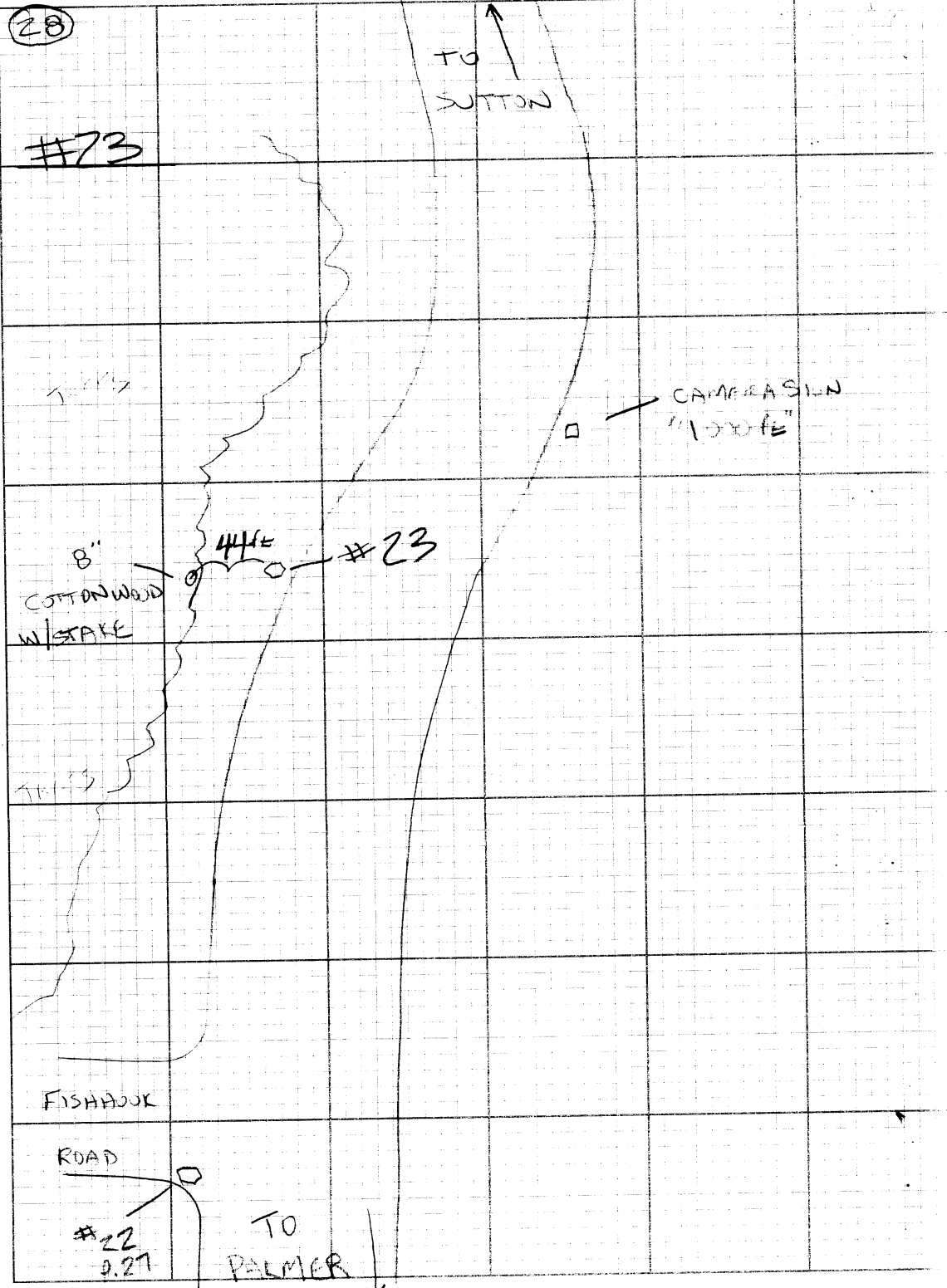
#22

LUM  
POLETO  
SUTTONWHITE  
WATER  
TANKTO  
PALMER#21  
P.26

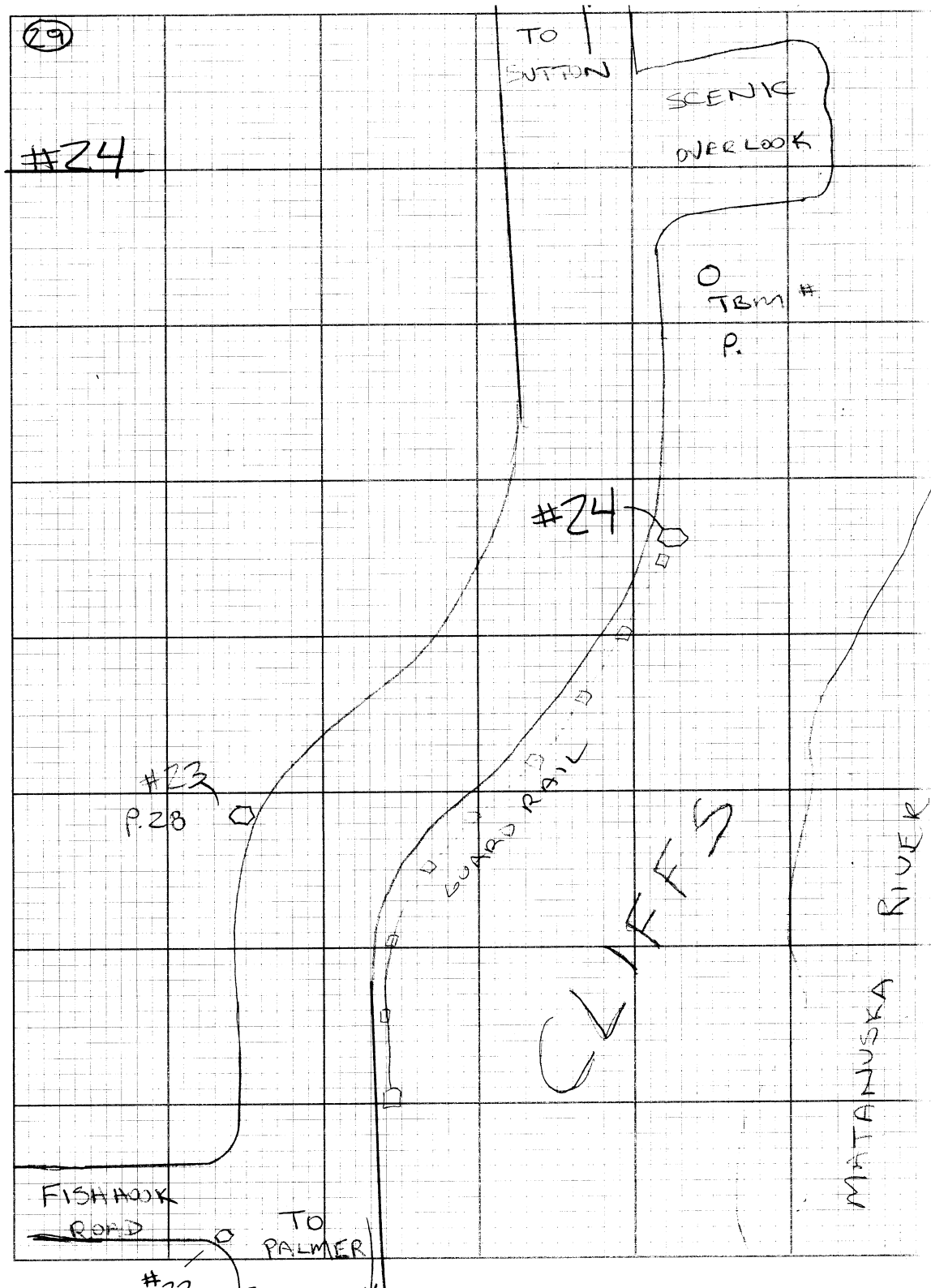
(27)

#22 IS A  $5/8"$  X  $30"$  REBAR  $\dot{\bar{I}}$  DOT PC SET  
IN PAVEMENT IN THE SW QUADRANT OF  
THE INTX OF THE GLENN HWY  $\dot{\bar{I}}$  FISH HOOK ROAD.  
CAP IS  $1\frac{1}{2}$  FE FROM EP,  $\dot{\bar{I}}$  20.5 FE FROM  
THE STOP SIGN  $\dot{\bar{I}}$  35 FE FROM THE  
LUM POLE; LIES 3.6 MILES NORTH ON THE  
GLENN HWY FROM THE SOUTH PALMER  
TRAIN STATION.

#23 IS A 5'3" x 18" RBR W/DOT PC SET IN  
DIRT SHOULDER ON THE WEST SIDE OF THE  
GLENN HWY ON THE 1<sup>ST</sup> CURVE AFTER  
FISHHOOK ROAD. CAP IS SET IN DIRT  
SHOULDER 3<sup>5</sup> FROM EDGE OF PAVEMENT.  
LIES 3.3 MILES NORTH ON THE GLENN HWY  
FROM THE SOUTH PALMER TRAIN STATION



#24



(29)

#24 IS A 5/8" X 15" RBR & DOT PC SET IN DIRT SHOULDER IN THE WEST SIDE OF THE GLENN HWY @ THE NORTH END OF THE GUARDRAIL PAST FISHHOOK ROAD & BEFORE THE MATANUSKA RIVER OVERLOOK. CAP IS SET IN DIRT SHOULDER 25 ft FROM EDGE OF PAVEMENT & 6 ft FROM THE END OF THE GUARDRAIL. AND LIES 3.9 MILES NORTH ON THE GLENN HWY FROM THE SOUTH PALMER TRAIN STATION



(30)

#25

TO  
SUTTON  
↗Bm  
#  
P.

DEWARY

"MUSKON  
FARM"  
SIGN

#25

"BUCKLE UP  
FOR SAFETY"  
SIGNARCHIE  
ROADTO  
PALMER  
↓

(30)

#25 IS A 5/8" BY 15" RBR W/DOT R SET  
IN THE PAVED SHOULDER ON THE EAST SIDE  
OF THE GLENN HWY APPROX 400 FE PAST  
ARCHIE ROAD & ADJACENT TO THE "BUCKLE-UP  
FOR SAFETY" SIGN.

CAP IS SET 2' FROM EDGE OF PAVEMENT  
AND 145 FE FROM THE 1<sup>ST</sup> SPON POST.  
LIES 4.3 MILES NORTH ON THE GLENN HWY  
FROM THE SOUTH PALMER TRAIN STATION.

(31)

#26

+ + + + +  
Barbed Wire Fence

FARM LOOP RD

Q  
Temp  
P.TO  
SUTTON

#26

TREES

TREES

TO  
PALMER

(31)

#26 IS A 5/8" X 15" RBR & DOT PC  
~~MAGNATE~~ SET IN EP  
 ON THE WEST SIDE OF THE GLENN HWY  
 ON THE CURVE BEFORE FARM LOOP ROAD  
 ADJACENT TO A BARBWIRE FENCE POST IN  
 THE FIELD ON THE WEST SIDE OF THE HWY.  
 REBAR IS IN EDGE OF PAVEMENT AND  
 25.2 ft FROM A STAKE IN A 6" COTTONWOOD  
 ON THE WEST SIDE OF THE HWY; LIES 4.8  
 MILES NORTH ON THE GLENN HWY FROM THE  
 SOUTH PALMER TRAIN STATION

#27

TO  
STATION

#54  
GPS FIRE  
P. 38

FIRE  
STATION

PED  
ADOPT-A-HWY  
SIGN

FARM LOOP ROAD

#27

DRIVEWAY

TRM 'Pig'  
#  
P.

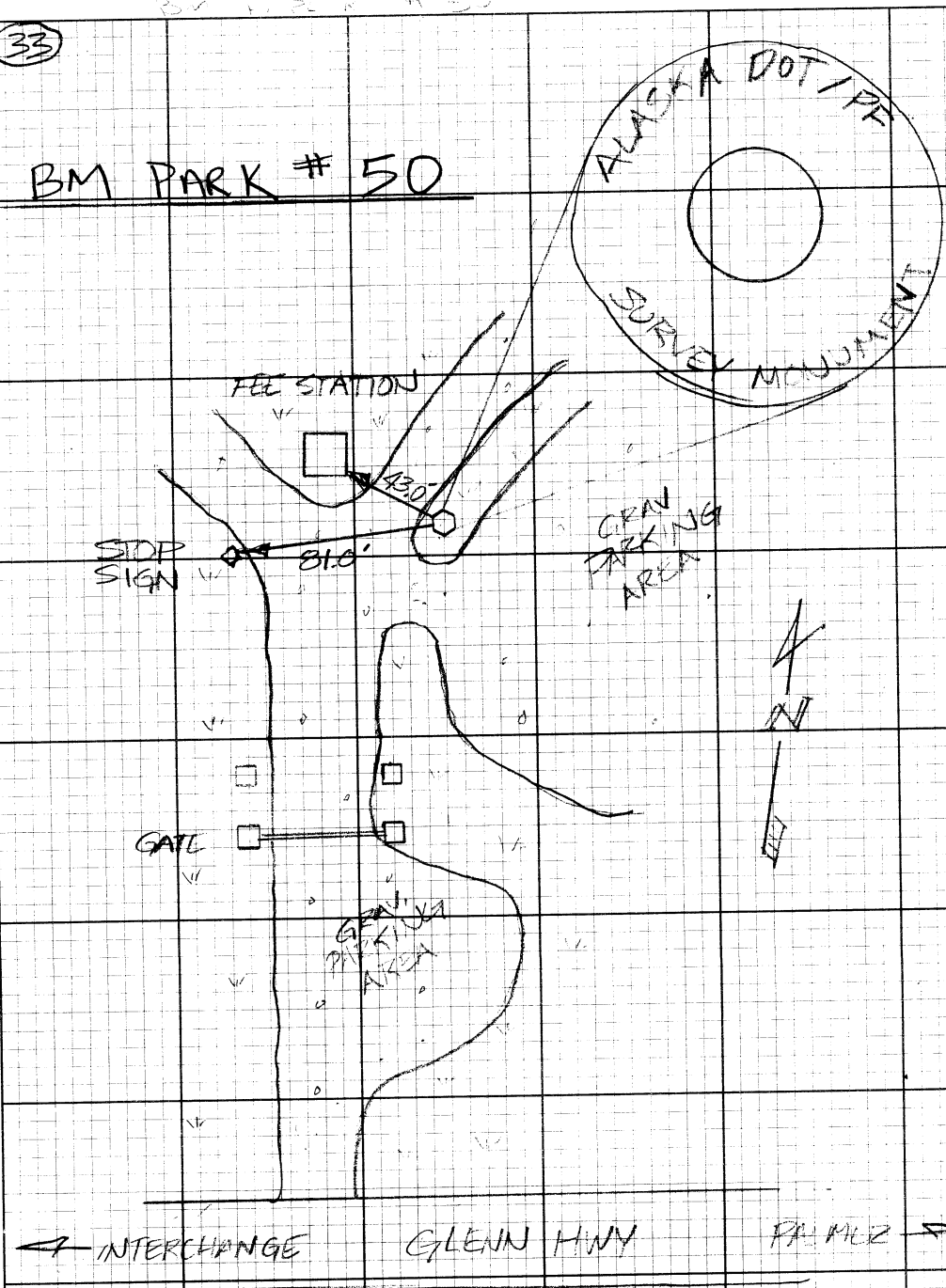
TO  
PALMER

#26

#27 IS A  $5\frac{1}{3}$ " X  $1\frac{1}{8}$ " RBR & DOT PL SET IN  
THE NW QUADRANT OF THE INTX OF FARM LOOP  
RD & THE GLENN HWY. RBR IS SET DOWN 0.3'  
IN THE EDGE OF PAVEMENT, 45.6' FROM THE  
"ADOPT A HIGHWAY" SIGN ON THE WEST SIDE  
OF THE HWY TO THE NORTH OF THE RBR;  
AND LIES 5.0 MILES NORTH ON THE GLENN  
HWY FROM THE SOUTH PALMER TRAIN  
STATION

(33)

## BM PARK # 50



(33)

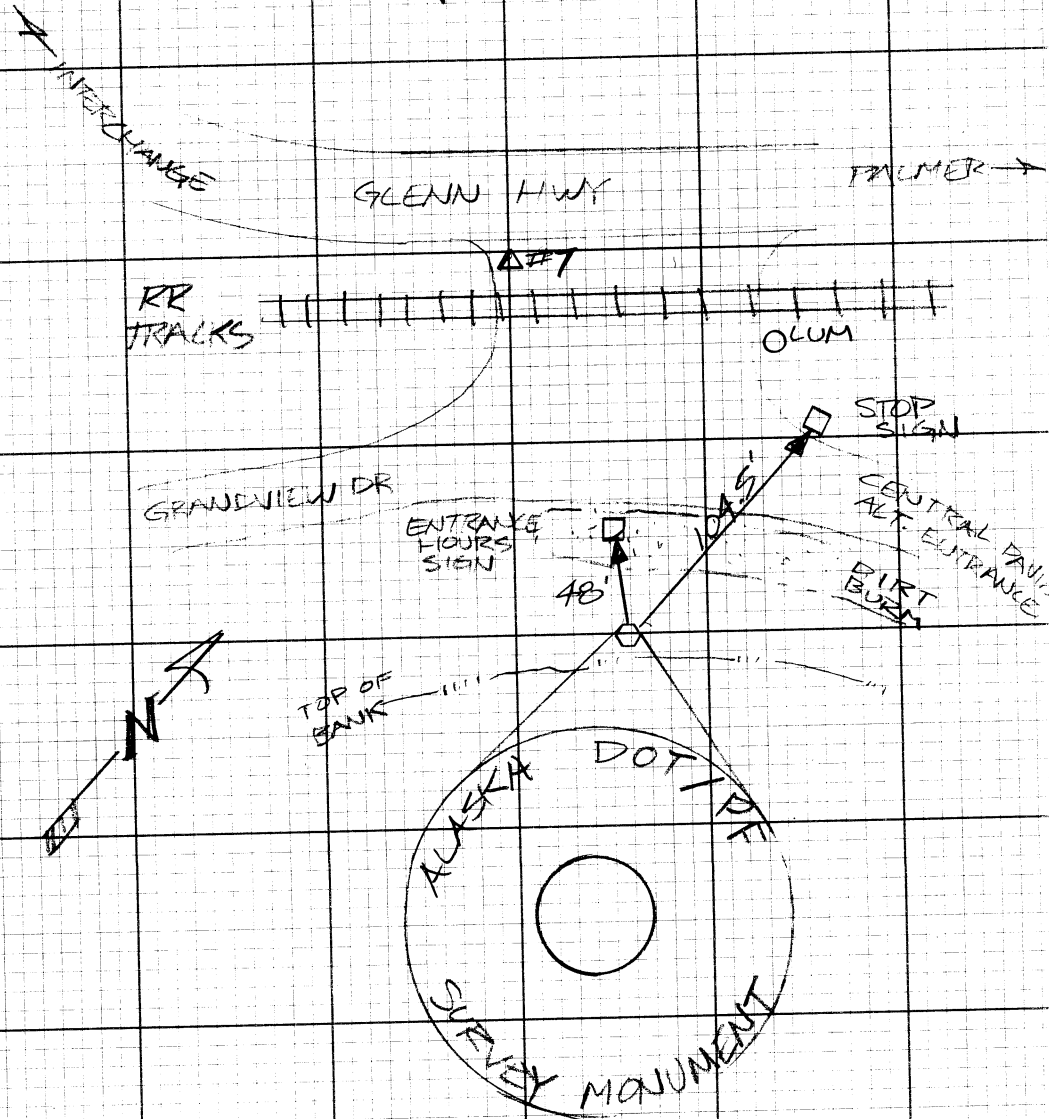
#50 BM KEPLER LIES IN KEPLER /  
BRADLEY LAKE PARK ON TOP OF  
A GRASSY BURN 81.0 FT NE'LY OF  
STOP SIGN & 43.0 FT NE'LY FROM  
THE SE'LY MOST CORNER OF FEE  
STATION SHACK

BM PARK IS A 3 1/4" DOT / PE BC  
WITH CRIMP-ON DATUM HEAD SET FLUSH ON  
3/4" X 10 FT OF STAINLESS STEEL DRIVER  
DRIVEN TO REFUSAL AND SURROUNDED  
BY A 3 FT X 4" STEEL PIPE.

34

P. 20 P. 21

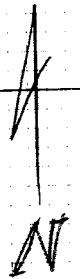
BM PIT



34

35

Bm DOT 2005



PAUMER

RR TRACKS

PAUMER  
DEPOT

ACCESS RD.

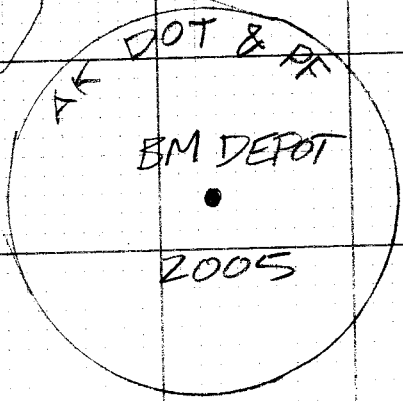
GLADWIN HWY

INTERCHANGE

BIKE  
CONC. WALK

CONC. WALK

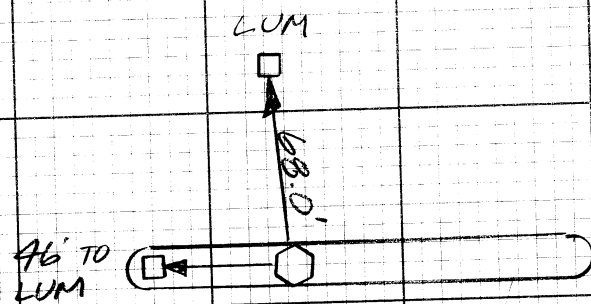
ALASKA STATE  
FAIRGROUNDS



35



(30)



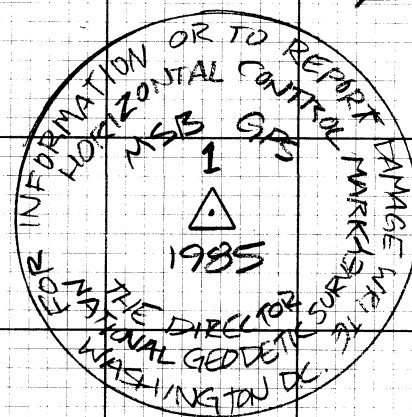
PARKING LOT

WALK



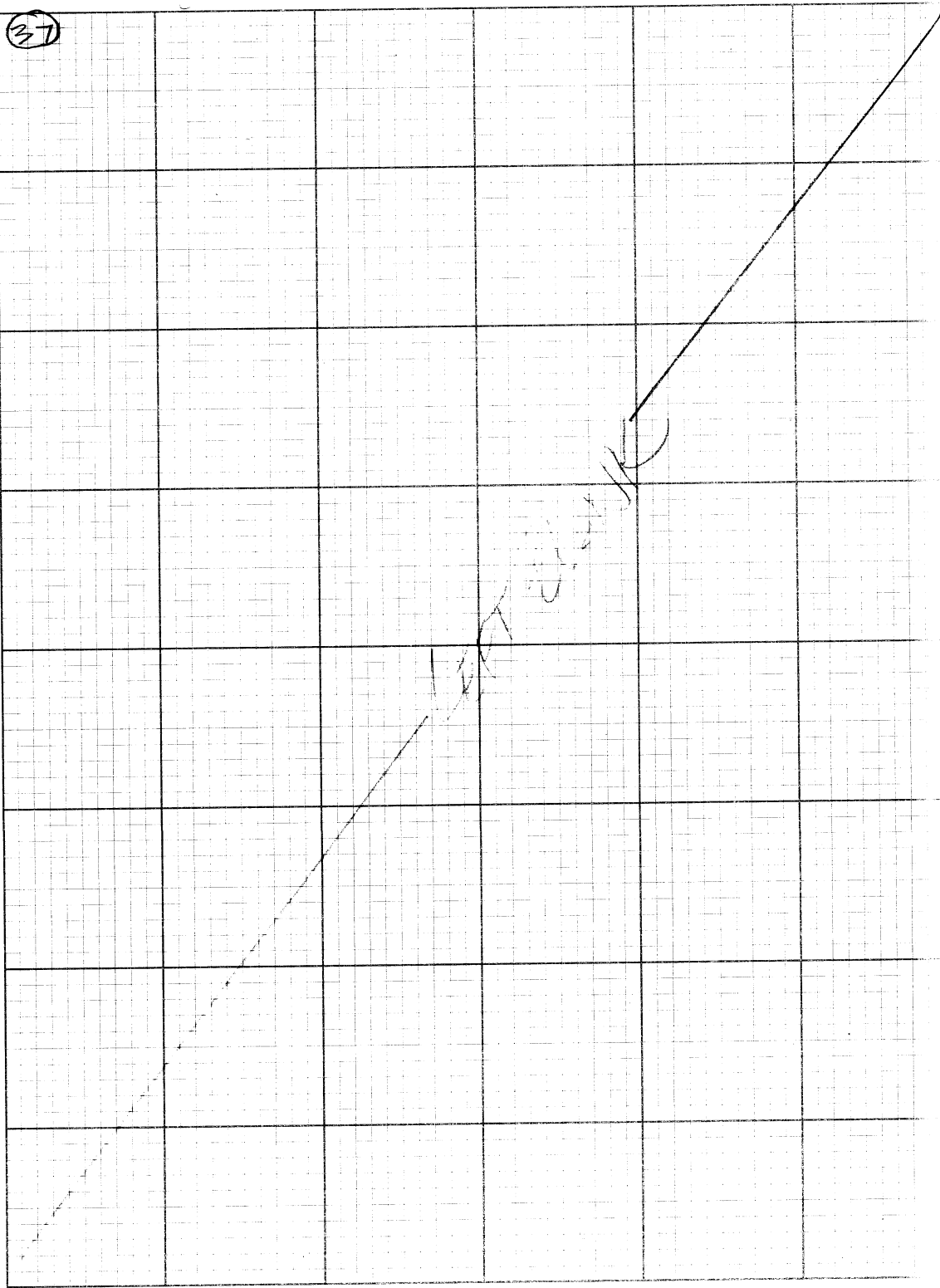
MAT-SU  
BOROUGH  
BUILDING

(30)

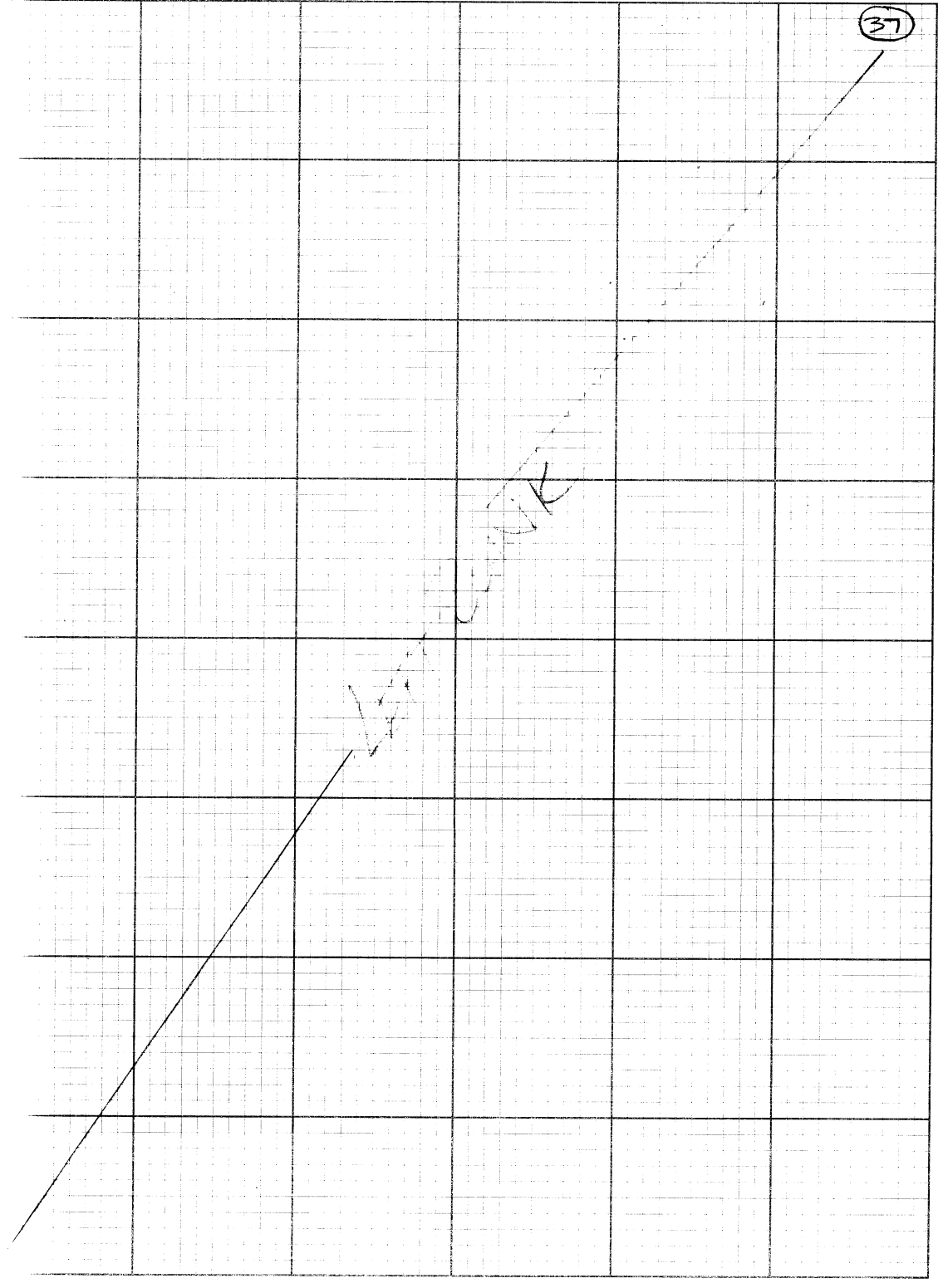


#53, 3 3/4" BRASS CAP  
IN MONUMENT CASE  
SET IN CURB ISLAND  
ON THE EASTERLY SIDE  
OF MAT-SU BOROUGH  
BUILDING, DOWN 0.3'  
SLIGHT LEAN WESTERLY

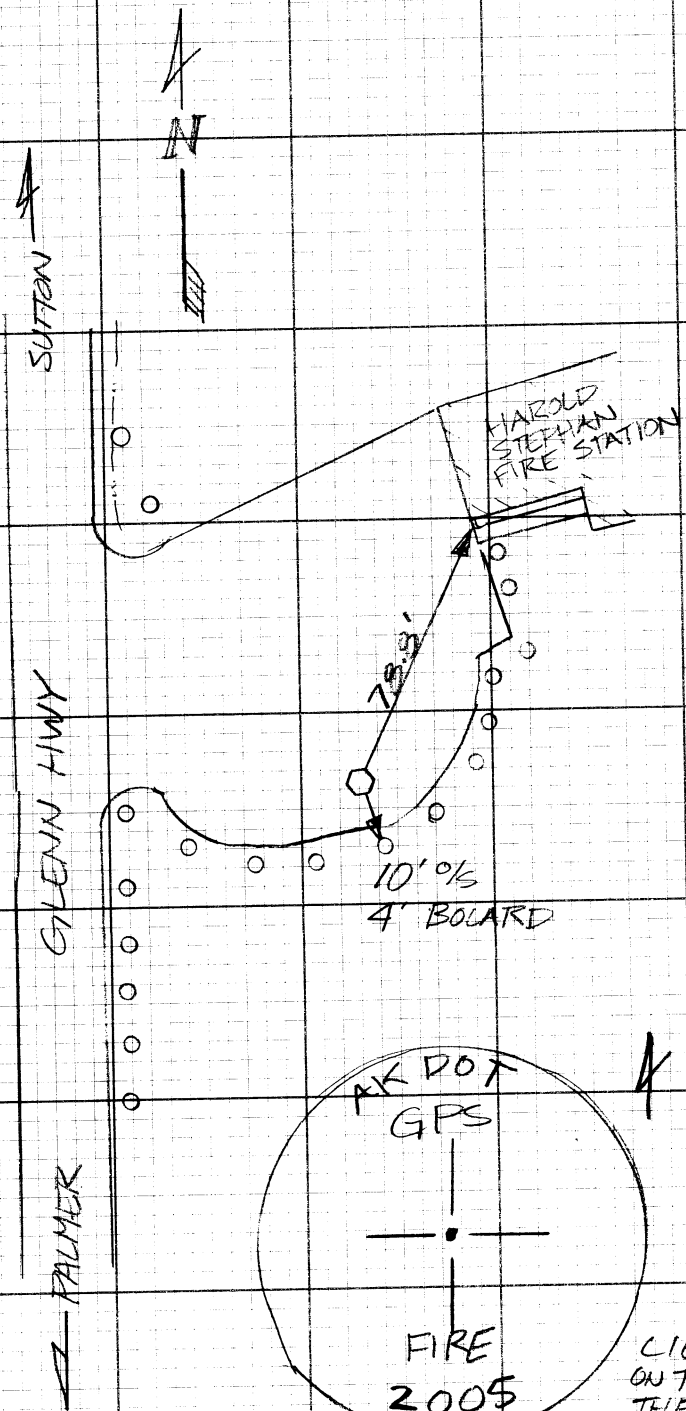
37



37







✓ #54; 2" AL CAP  
FLUSH IN  
PAVEMENT  
OF HAROLD  
STEPHAN  
FIRE STATION;  
LIES 5.2 MILES NORTH  
ON THE GLENN HWY FROM  
THE SOUTH PALMER  
TRAIN STATION