

Peninsular
CROSS SECTION BOOK
CB 802

2015.14.01 MAT SU AREA ROADS PAVEMENT PRESERVATION (GROUP C)

①

INDEX

5-12 Control Ties

10 VOIO

25-29 Levels

30 Distance Checks Gun vs GPS

MATSLU Group C

①

②

NOTES

- ① For the Edlund portion of this survey the local coordinate system is SV-1. The horizontal Datum is NAVD83/92.
Horizontal Control is from Knik Goose Bay Road Rehabilitation (Book 2041.0202).
- ② For the Edlund portion BM MK3A EL 326.090 was held for vertical control.
- ③ For the Knik River Road portion the vertical Datum is an OPUS derived NAVD88 elevation.
- ④ Horizontal Control for Knik River Road is based off Old Glenn Hwy control.
- ⑤ All Control Set for this job are $5/8"$ x 24" Rebar with Plastic Cap.

Matsen PP Group C

②

⑤ UNIT π F/M START STOP

Control Ties

SB

4

15

FL PC \downarrow 2

4.52'

10:05A 2:02P

1377m

2

14

FL PC \downarrow 3

3.92'

10:19A 1:57P

1135m

Matsu PP Group C

⑤

10-26-15

Leica

J. Gannaw

± 400

Viva

Cloudy

* CP-15 see Book 2011.02.02 Knik Goose Bay Road
MP 0.3-6.8 page 11

* CP-14 see Book 2011.02.02 Knik Goose Bay Road
MP 0.3-6.8 page 10

⑥ UNJT X F/M START STOP

EDLUND ROAD

Control Ties

SR

5

3

Set PCV 4

[DOT]

4.33'

1.319m

11:51 A

1:59

3

1

Set Pbc/PC

↓ 3 [DOT]

3.95'

1.203m

12:10 P

1:50 P

R P's

CP-1

CP-2

CP-3

From EP East 17.6'

From Tele Red 13.8' South

From Traffic Sign (Safety Zone)
24.5 North

NW From PP 9.8'

E From EP 8.8'

NW 47' From TBM 603

E-NE 12.6' From
stop sign

S 2' From EP

NW 63' From
power pole U/trans

K38

4

A

Matsa PP Group C

⑥

10-26-15

cont.

J. Bernman

South Knife-Goose Bay Road

X
TBM
602

North
N.T.S.

Cottonwood Creek

Spawning Loop

CP-2
X
TBM
603

W. Suburban Dr.

Edlund Road

CP-3

Unit X E/M START STOP

WX
PC
± 40°

Control Ties

SR

2

CP-3

4.10'

10:00A

11:12A

1.249m

3

CP-1

3.91'

10:11A

11:16P

1.131m

SR

4

CP-2

Set Rbr/PL

[DOT]

3.71'

10:46A

11:10A

1.131m

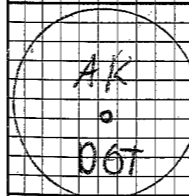
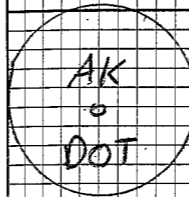
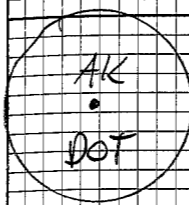
Met Sur PP Groups

CD-

Leica

Vista

10-28-15
J Bannow
B Kottzsch
D Collins



Knik River Road Mile 2.26

(DAILY LOG 06H 103015)

NOTE 92 DAILY

5 ~~#92~~ 3.44' 12:30
 Fd 2 1/2 AM 12:30
 IN PIPE 1048M / P 301
 BASE ↓ 0.3 P

6 #93 4.44' 12:28 2:53
 FA 2 1/2 AM 12:28
 IN PIPE 1352M P
 BASE ↓ 0.3 P

8 #4 3.79' 1:07 2:20
 SET 24x90 1:07
 END 90 P
 BASE ↓ 0.3 P

LT RAIN

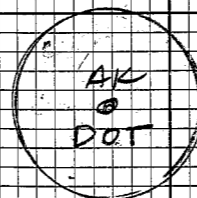
34°

10-30-15

B. KOITZSCH

D. COLLINS

T. DASCH



9

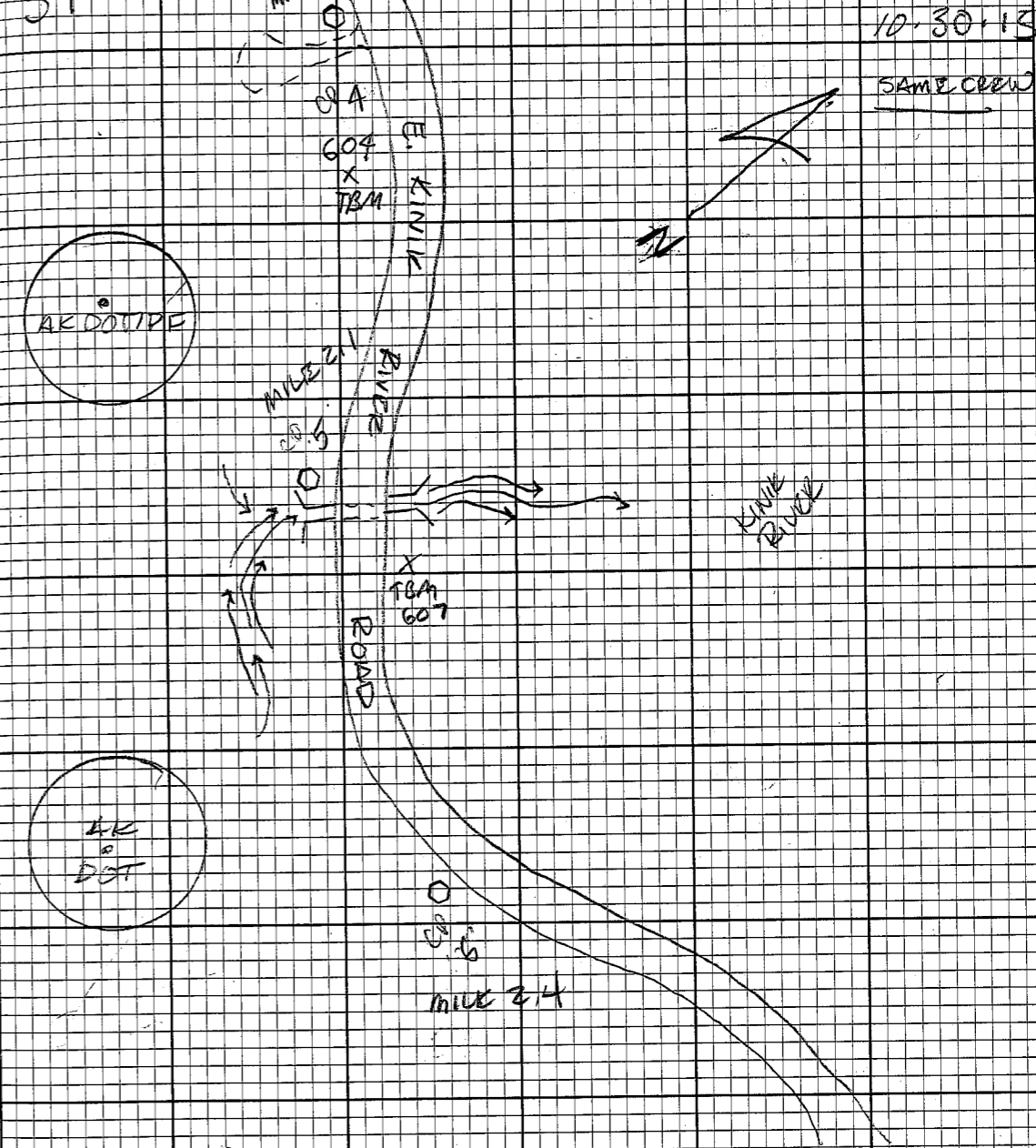
* SEE BASE INFO Pg 6

7 # 5 3.61'
 COVERED SET 24x5/8
 200 PC
 1099M
 204
 P

7 # 6 4.12'
 COVERED SET 24x5/8
 200 PC
 1256M
 210
 P

CP-4 CP-5 CP-6
 Mile 2 Mile 2.1 Mile 2.4
 8' from EPSW SW 34.5' from EP S 6.4' from EP

LT RAIN
 34°



SB

5

93

3.86'

1.176m

11:43A

VOID

Wx

± 32°F
light snow

Leica Viva

J Bannow
P Sinnott

VOID

UNIT T FM START STOP

Knik River Road Mile 7.48

1 CP 91 4.09'
FD 3 1/4 RM
↓ 03 IN CASE 1246m
9:12 2:57p
A

2 CP 93 4.20'
FD 3 1/4 RM
↓ 03 IN CASE 1280m
9:54 2:54p
A

0 CP 7 3.90'
SET 1 1/2 RM
↓ 03 1189m
10:39 2:06p
A

Matsa PP Group C

Leica
Viva
Wx
F15
Calm
M. Sunny

11/12/15
B Kortsch
J Ranner
D Collins

AK DOT 12
OGH 091
4/16/15
2010

AK DOT 12
OGH 093
4/16/15
2010

AK
DOT

7 miles

3 CP 8
SET 1/4 PC
ON 24" RBR
1299m 4.27
10:19 12:14p
A

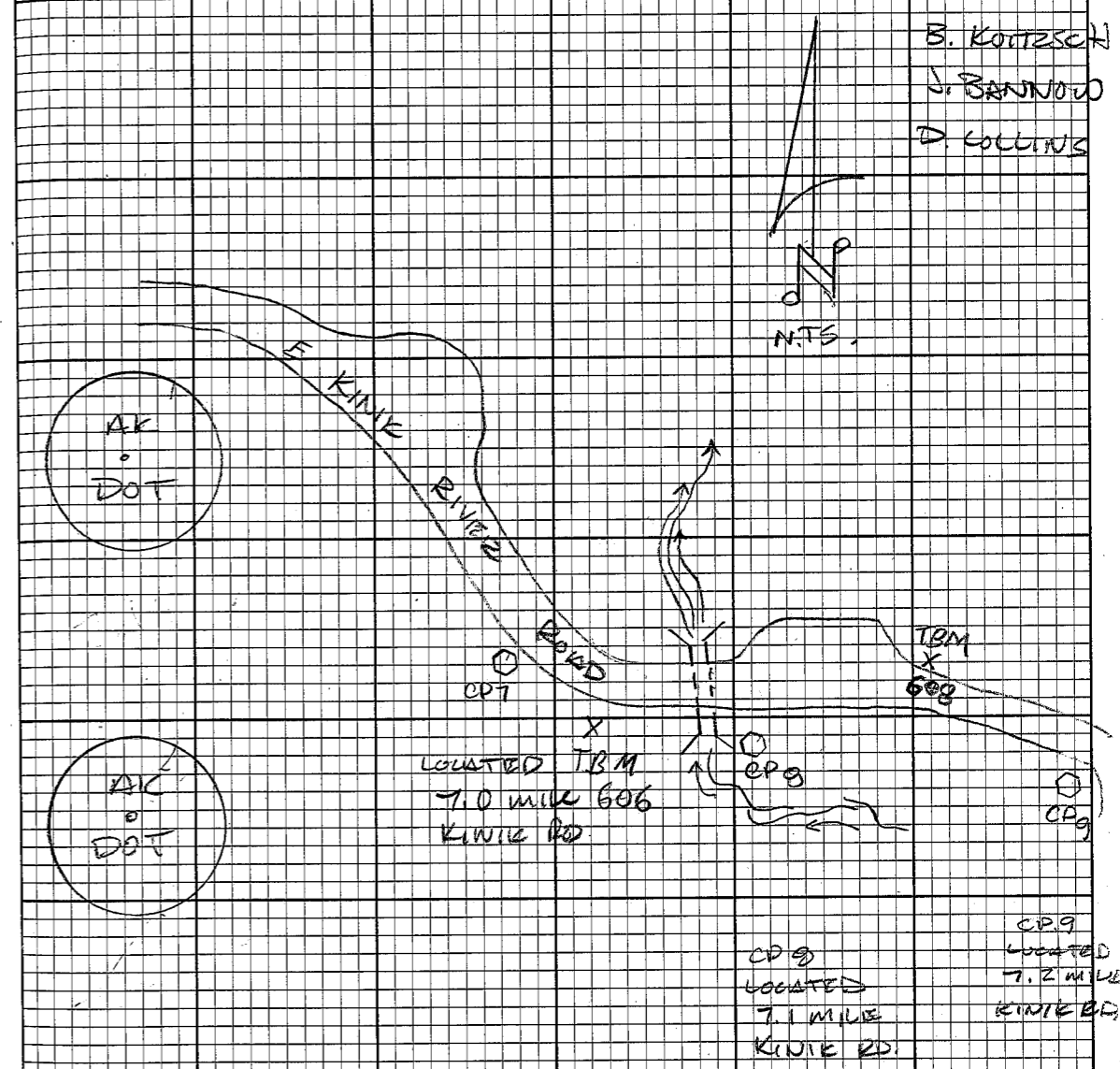
7 CP 9
Set 1/4 PC
ON 24" RBR
1154m 3.80
10:25A 1:20P

CP-7
Mile 7.0
2.8' From EP

CP-8
RPIS
Mile 7.1
6.7' From EP

CP-9
-WNW 35' From
Mailbox # 25544
-SE 172' From
Traffic sign curve ahead.
-14.1 From EP

11/12/15
B. KOTTZSCH
J. BANNOW
D. COLLINS



CP9
LOCATED
7.1 MILE
KINIE RD.

CP9
LOCATED
7.2 MILE
KINIE RD.

Point Desc RAW Adj Final

35° PC 10-28-15

EDLUND LEVELS

Loop 002

601	BM MK-3A	326.09	326.09	326.09
CP-1	CP-1	283.56	283.56	283.56
602	TBM602	266.40	266.40	266.40
CP-2	CP-2	257.99	257.99	257.99
603	TBM603	262.23	262.23	262.23
CP-3	CP-3	259.03	259.03	259.03
601	BM MK3A	326.09	326.09	326.09

EOC: +0.002
Total Dist: 6791.08

Mat. Sn PP Group C

Leica
DNA03
Level 47

J. Bannow
B. Koitzsch
P. Sinnott



BM MK 3A Has a published EL. of 326.090. It is a 3' Aluminum cap located on the NE corner of Lakewood Dr and S. Knik Goose Bay. Elevation held.

* BM MK-3A is an Aluminum Monument (MSB)

* TBM 602 is a RR spike in an 8" birch.

* TBM 603 is a RR spike in a 12" Birch

*** For TBMs that are Railroad Spikes use the high point for elevation. For ALL TBMs this project.

26 Point Desc RAIN Final
 11-13-15
 Knik River Road Mile 2.26

	Loop 003	Voic
CP-5	100.00	59.82
604	101.38	61.19
CP-4	131.58	31.40
604	101.38	61.19
CP-5	100.00	59.82
Total Dist	2142.30	EOC = 0.005

	Loop 1	Final
CP-5	100.00	59.82
CP-6	100.96	60.78
CP-5	99.999	59.82
Total Dist	2184.15	EOC = 0.001

Matsa PP Group C
 Leica
 DNA 03
 Level 47
 Wx
 + 80°
 Clear
 Calm
 B Kortsch
 D Collins
 T Dorsch

* TBM 604 IS A RR SPIKE IN AN 8" Birch

27 Point Desc RAW Adj Final

11-13-15

Knik River Road Mile 7.48

Loop 5

CP-8 CP-8 100.00 92.40' 92.40'

CP-9 CP-9 107.83 100.23' 100.23'

CP-8 CP-8 100.00 92.40 92.40'

Total Dist = 1449.59' EOC = *0.003

Loop 6

CP-8 CP-8 92.40' 92.40 92.40'

CP-7 CP-7 85.82' 85.82 85.82'

TBM 606 RR Spike in 90.90' 90.89 90.89'
8th Birch

CP-8 CP-8 92.40 92.40 92.40'

Total Dist = 1289.80' EOC = 0.004

Mt. Sa PP Group C

27

Same

Same

Same

Level 47

Wx
PC
±200

Knicks River Road Mile 7.48

Loop 7

8

CP-8

100.00' 92.40'

608

TBM 608

102.74' 93.67'

8

CP-8

100.00' 92.40'

Total dist = 258.60 EOC = -0.001

Level 47

DNA03

11-30-15

J Barnou

P Sinnott

* TBM 608 is a railroad spike in a 2.4' DBH Cottonwood tree.

Point	Prsc	Raw	Adj El
29 same			
Knik River Road Mile 2.48			
Loop 8			
5	CP 5	100.00'	59.82'
607	TBM 607	99.24'	59.06'
5	CP-5	100.00'	59.82'
Total Dist =		306.53'	EOL = 0.002

same	11-30-15	29
	same	
* TBM 607 is a railroad spike in a power pole. Use head of spike for elevation.		

H2 Distance Checks

Edland

Point	Point	GPS	GUN	Deltas
1	2	422.71'	422.71'	0.00'

2	3	863.68'	863.70'	0.02'
---	---	---------	---------	-------

Knik mile 2.4

4	5	1041.38'	1041.34'	0.04'
---	---	----------	----------	-------

5	6	1090.16'	1090.10'	0.06'
---	---	----------	----------	-------

Knik mile 2.48

7	8	606.32'	606.32'	0.00'
---	---	---------	---------	-------

8	9	716.83'	716.82'	0.01'
---	---	---------	---------	-------