

LEGEND

- (xxx) POINT NUMBER IDENTIFIER
- ⊕ FOUND PRIMARY MONUMENT
- FOUND SECONDARY MONUMENT
- ⛶ FOUND PRIMARY GOVERNMENT MONUMENT
- ▼ FOUND NGS CONTROL STATION
- △ GPS
- ▲ SET PRIMARY CONTROL
- ▲ SET CONTROL POINT
- PROJECT EXTENTS
- - - - - TRACT LINES
- DIGITIZED COAST LINE

HORIZONTAL CONTROL

ALL UNITS FOR THIS SURVEY ARE EXPRESSED IN U.S. SURVEY FEET. THE GEODETIC BASIS IS NAD83 (2011) (EPOCH2010.0000) HOLDING CORS STATIONS AC26, KOD6 AND AC39 FIXED. THE HORIZONTAL COORDINATE SYSTEM FOR THIS SURVEY IS A LOCAL GROUND SYSTEM RELATED TO ALASKA STATE PLANE ZONE 5 DEVELOPED BY DOT&PF ("KODIAK") USING THE FOLLOWING CONVERSION PARAMETERS;

CONVERSION PARAMETERS

TO CONVERT FROM THE LOCAL GROUND COORDINATE SYSTEM TO ALASKA STATE PLANE ZONE 5:  
1) ADD 1,238,937.1390N, 1,901,866.2400E TO THE COORDINATES.

TO CONVERT FROM ALASKA STATE PLANE ZONE 5 TO THE LOCAL GROUND COORDINATE SYSTEM:  
1) SUBTRACT 1,238,937.1390N, 1,901,866.2400E FROM THE COORDINATES.

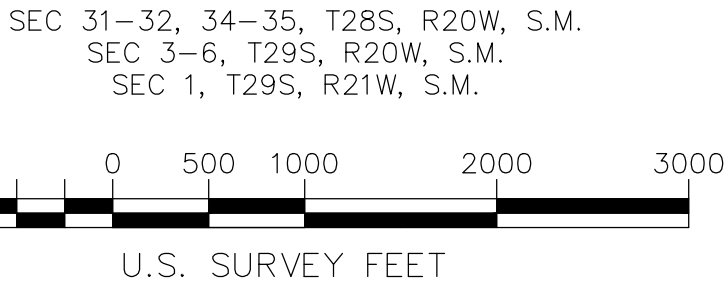
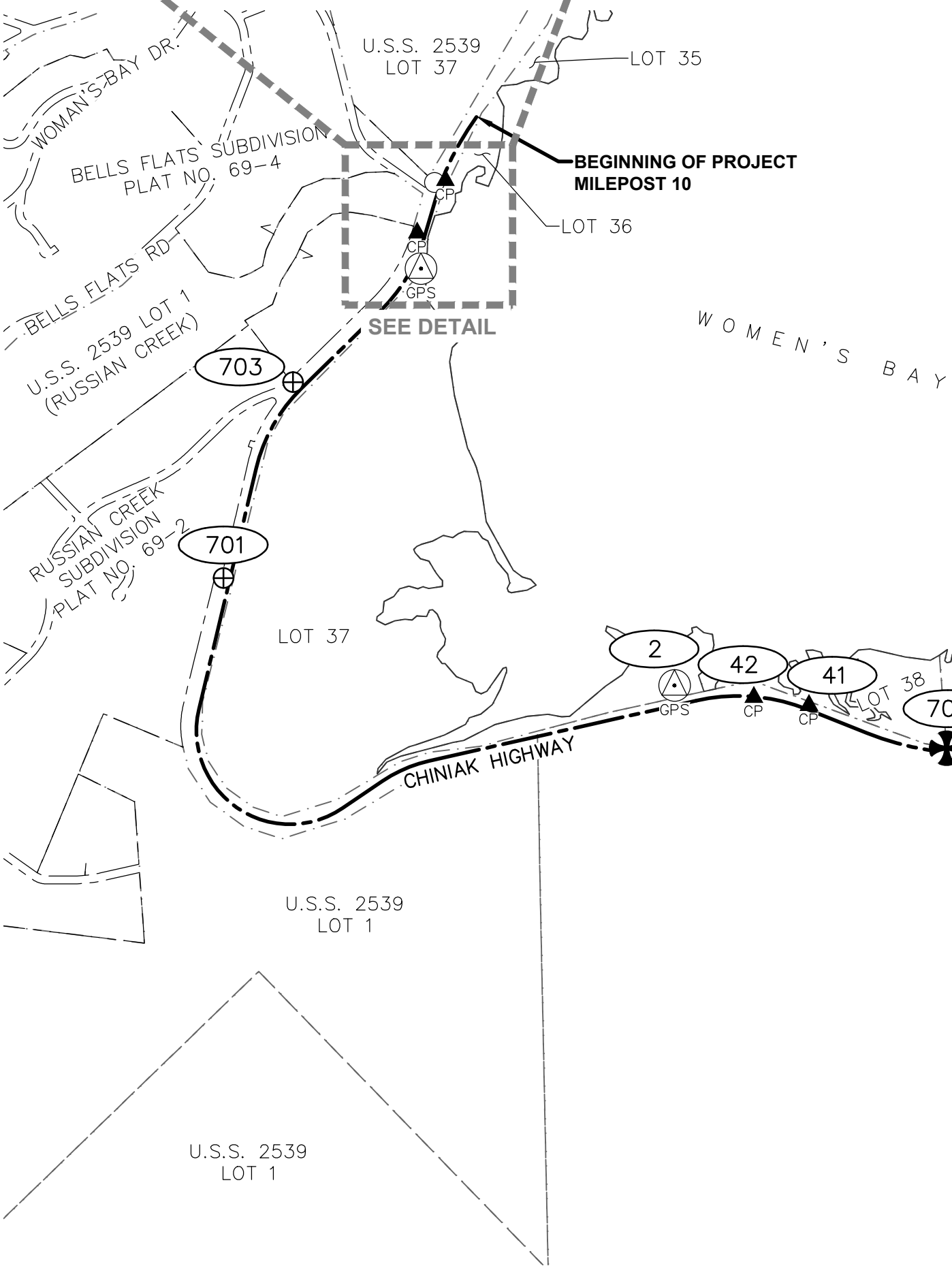
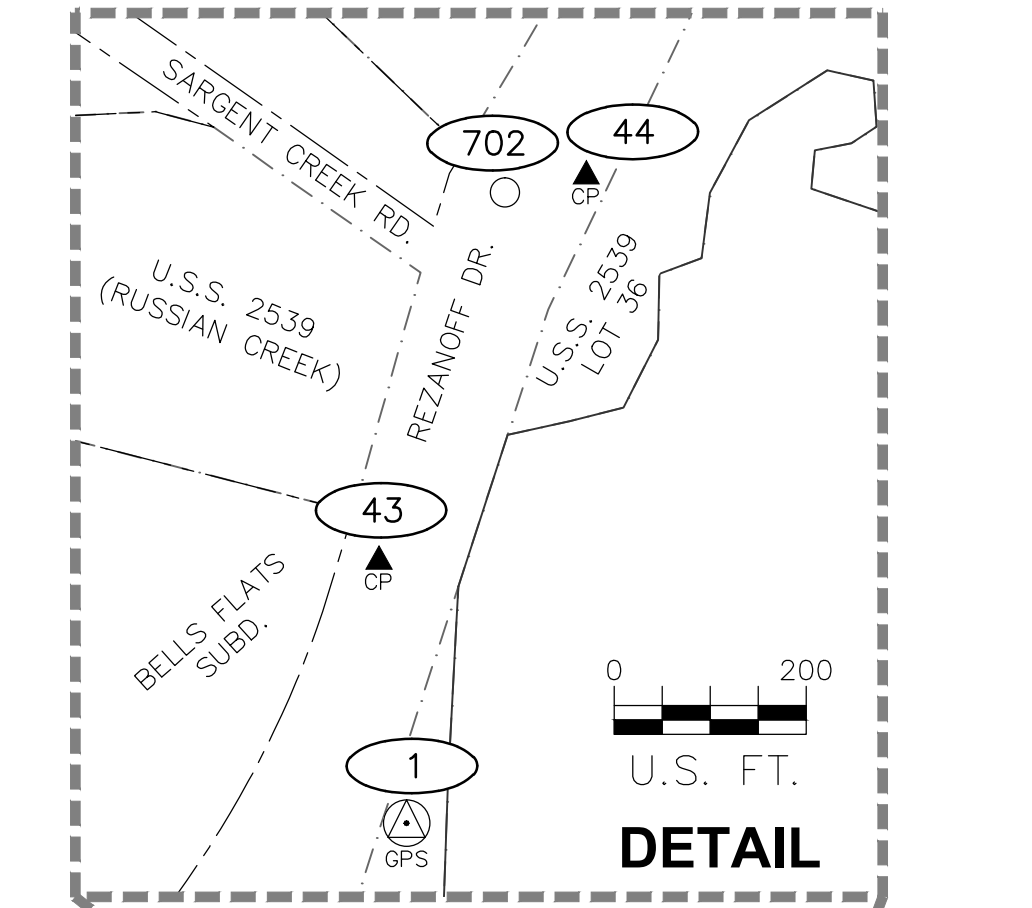
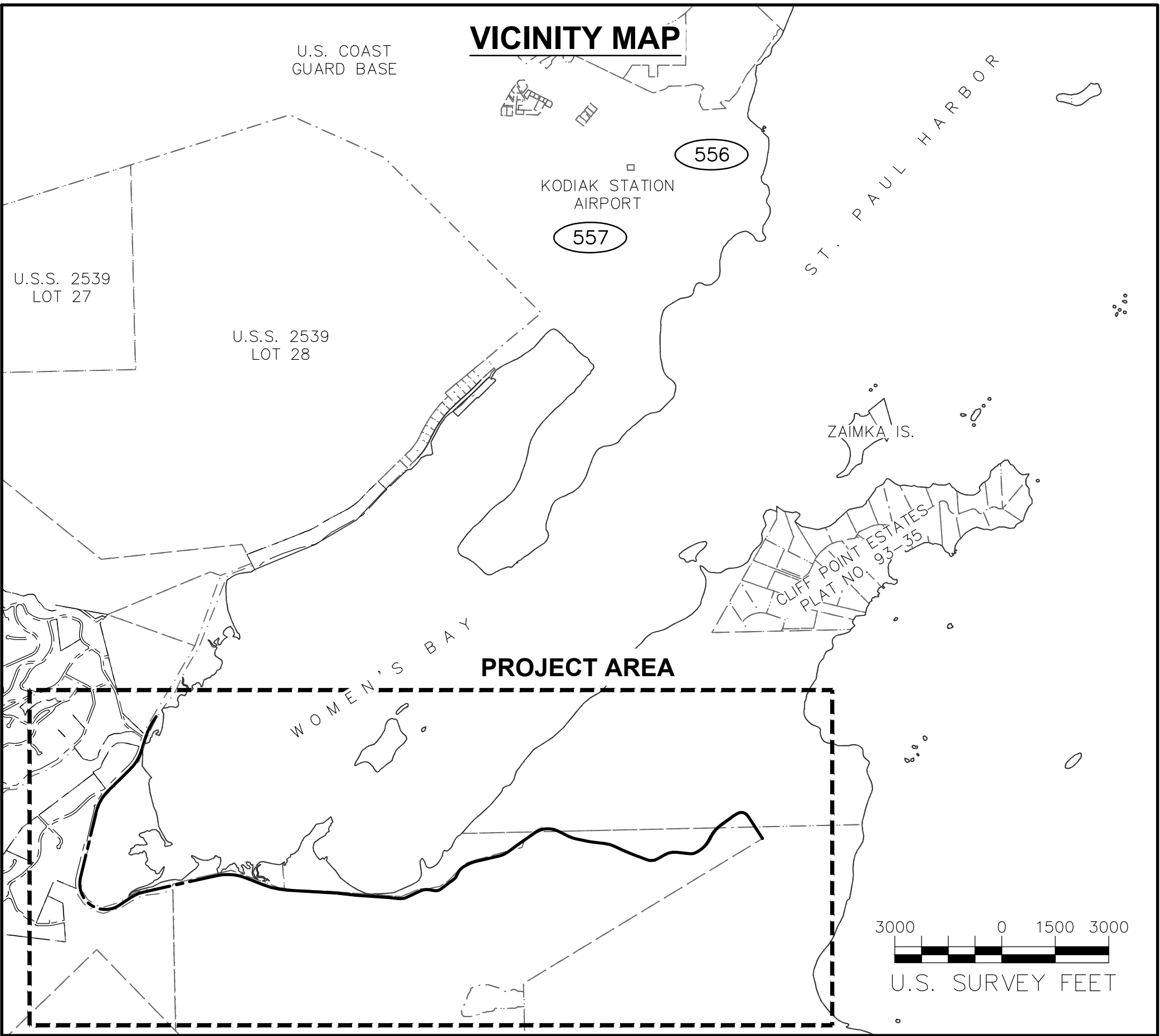
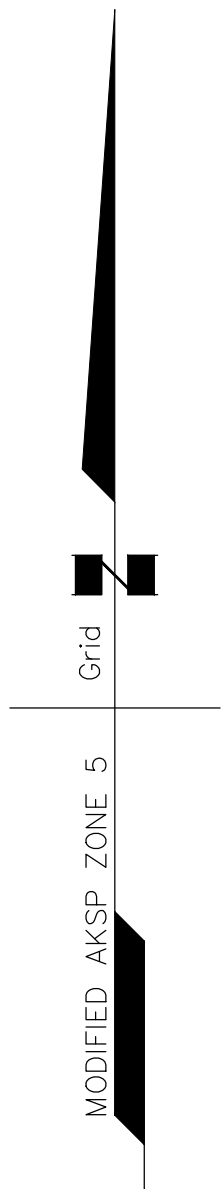
THE SCALE FACTOR IN THE PROJECT AREA IS VERY NEARLY ONE AND NO SCALE FACTOR IS USED BETWEEN THE TWO SYSTEMS.

BASIS OF VERTICAL CONTROL

THE VERTICAL DATUM IS GPS DERIVED NAVD88 USING GEOID12A. ELEVATION 167.78 WAS ESTABLISHED AND HELD AS FIXED ON POINT #101 FOR GPS DERIVED NAVD88 VERTICAL ADJUSTMENTS ON CONTROL POINTS: #1, #2, #3, #4, #5, #41, #42, #43, AND #44. ELECTRONIC CLOSED LOOP LEVELS WERE RUN FROM POINT #1 TO POINTS #43 AND #44, AND FROM POINT #2 TO POINTS #41 AND #42 TO VERIFY ELEVATION DIFFERENCES IN GPS ELEVATIONS. THE VERTICAL DIFFERENCES WERE LESS THAN 0.02' FOR THESE POINTS.

SURVEY NOTES

- ALL DIMENSIONS AND COORDINATES SHOWN ARE IN U.S. SURVEY FEET.
- SURVEY WAS CONDUCTED BY USKH/STANTEC DURING NOVEMBER 2013 AND AUGUST 2014.
- GPS MEASUREMENTS WERE PERFORMED USING TRIMBLE R6 AND R8 GNSS RECEIVERS AND PROCESSED USING TRIMBLE BUSINESS CENTER V3.2 SOFTWARE. VERTICAL CONTROL WAS SURVEYED USING A TRIMBLE DINI DIGITAL BAR CODE LEVEL.
- BACKGROUND SUBDIVISION AND STREET INFORMATION IS FOR ORIENTATION PURPOSES ONLY.
- ALL ELEVATIONS MUST BE FIELD VERIFIED BEFORE USE.



Surveyor's Certificate

I hereby certify that I am properly Registered and Licensed to practice Land Surveying in the State of Alaska, and that this drawing represents a survey made by me or under my direct supervision, and that the monuments shown hereon actually exist as described, and that all dimensions and other details are correct to the extent shown hereon.

Jeremy A. Hurst LS-11796

Date

Kodiak Recording District  
State Business – No Fee  
This survey does not constitute a subdivision  
as defined by AS 40.15.900(5)

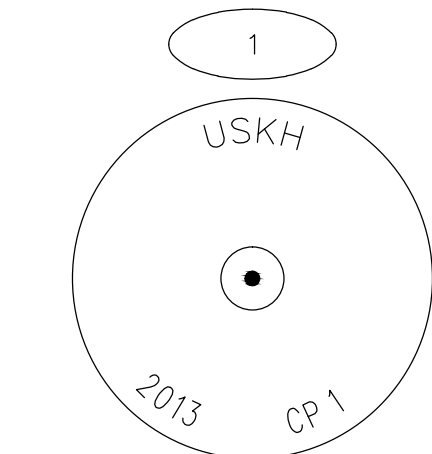


STATE OF ALASKA  
DEPARTMENT OF TRANSPORTATION  
AND PUBLIC FACILITIES  
SURVEY CONTROL DIAGRAM

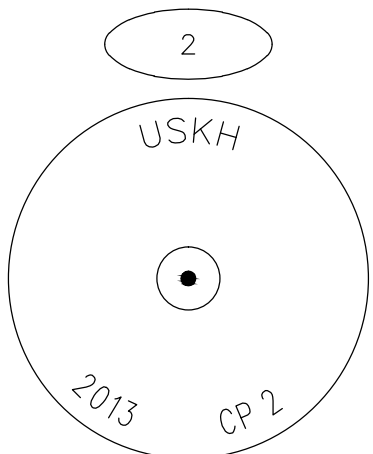
Record Of Survey  
PREVENTIVE MAINTENANCE CHINIAC HIGHWAY  
MP 10-15 PAVEMENT PRESERVATION  
AKSAS 56699

Located within T28S R20W Secs 31-32, and 34-35, and T29S  
R20W Secs 3-6, and T29S R21W Sec 1, Seward Meridian

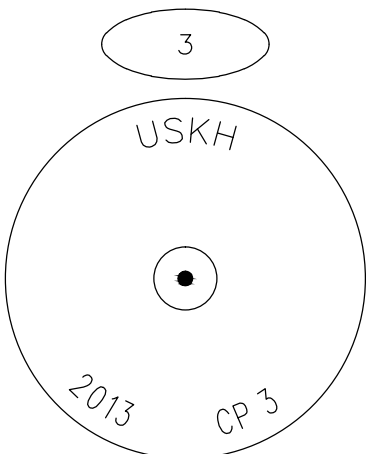
DRAWN	EFG	DATE	01/26/2015	SCALE	1"=1000'
CHECKED	GMG	DATE	01/26/2015	SHEET	1 OF 2



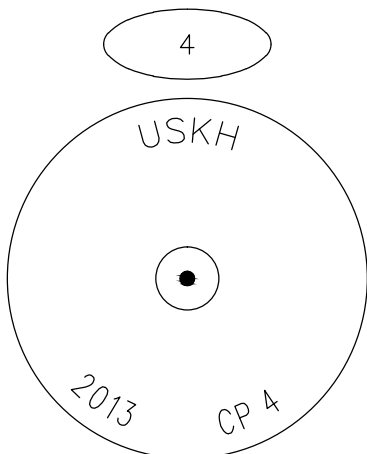
Set 3-1/4" Brass Cap on  
9/16" SS Rod w/ Datum Point  
Encased in PVC Pipe



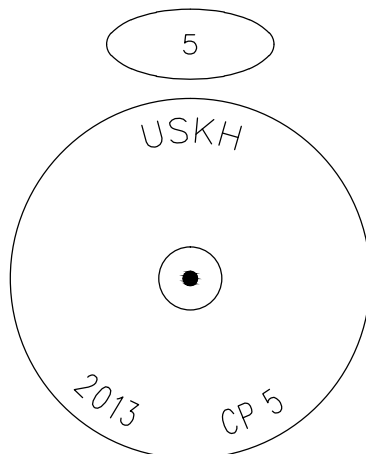
Set 3-1/4" Brass Cap on  
9/16" SS Rod w/ Datum Point  
Encased in PVC Pipe



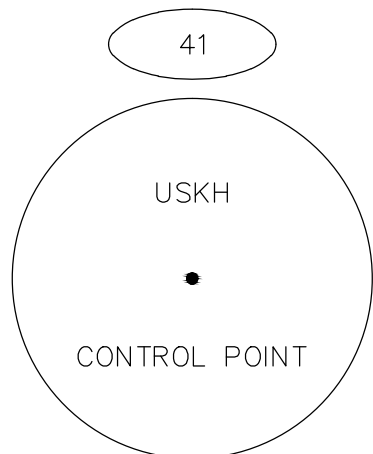
Set 3-1/4" Brass Cap on  
9/16" SS Rod w/ Datum Point  
Encased in PVC Pipe



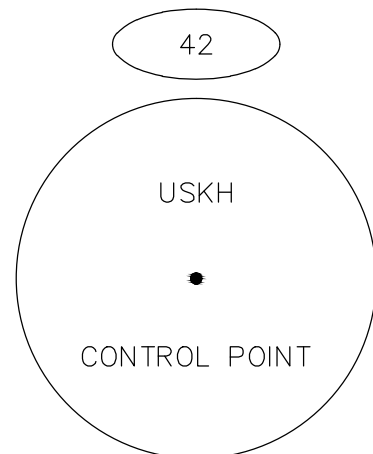
Set 3-1/4" Brass Cap on  
9/16" SS Rod w/ Datum Point  
Encased in PVC Pipe



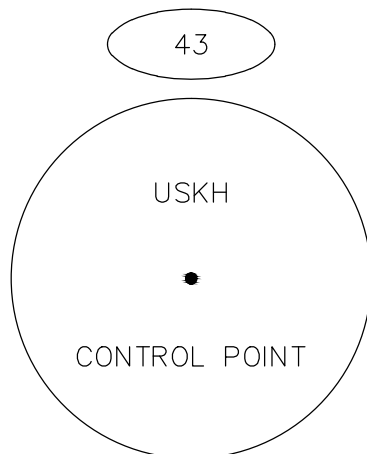
Set 3-1/4" Brass Cap on  
9/16" SS Rod w/ Datum Point  
Encased in PVC Pipe



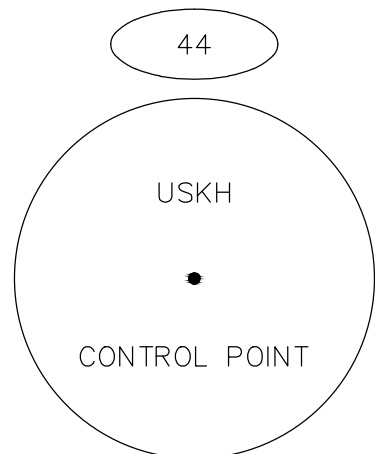
Set 1-1/4" Red Plastic Cap  
On 5/8" x 30" Rebar  
0.2' Below Ground



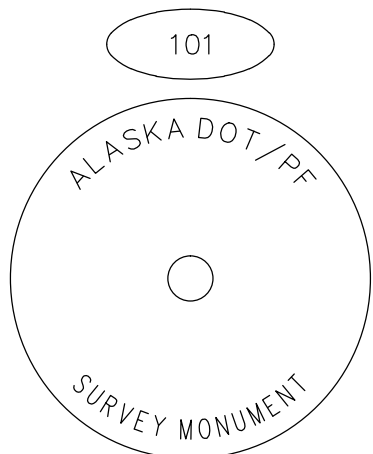
Set 1-1/4" Red Plastic Cap  
On 5/8" x 30" Rebar  
0.2' Below Ground



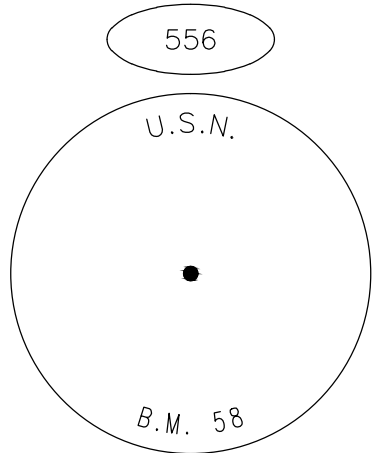
Set 1-1/4" Red Plastic Cap  
On 5/8" x 30" Rebar  
0.2' Below Ground



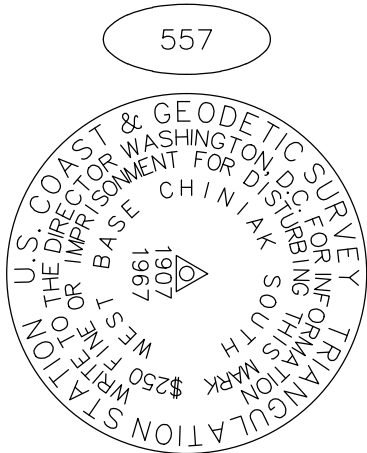
Set 1-1/4" Red Plastic Cap  
On 5/8" x 30" Rebar  
0.2' Below Ground



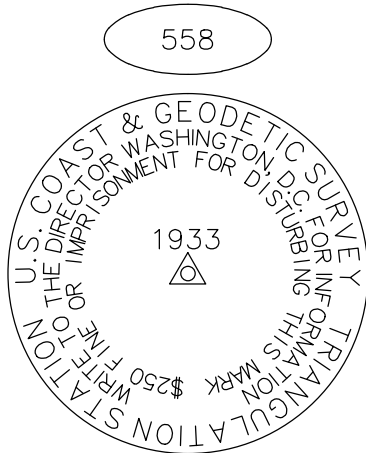
Found 2-1/2" Brass Cap  
on 9/16" SS Rod  
0.6' Above Grade  
Good Condition



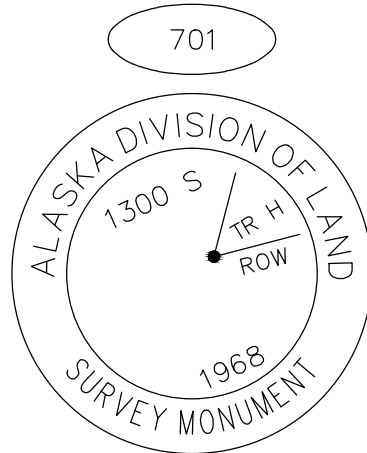
Found 3-1/4" Brass Cap  
in Concrete Manhole Casing  
Good Condition



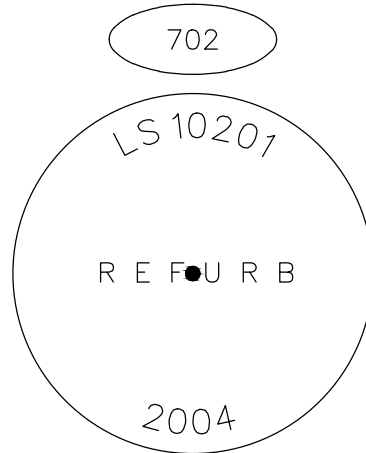
Found 3-1/4" BC  
0.2' Below Grade  
Good Condition



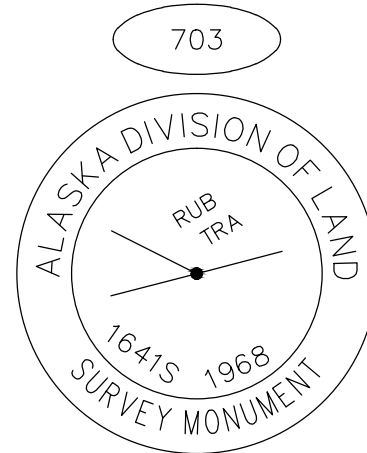
Found 3-1/4" Brass Cap  
in Concrete  
Good Condition



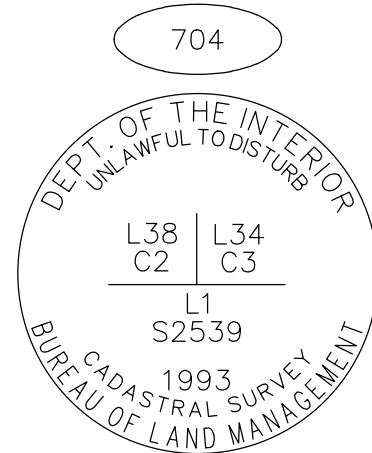
Found 2-1/2" Brass Cap  
on 9/16" SS Rod  
0.6' Above Grade  
Good Condition



Found 2" Aluminum Cap  
in Steel Post  
0.6' Above Grade  
Good Condition



Found 2-1/2" Brass Cap  
on 9/16" SS Rod  
0.6' Above Grade  
Good Condition



Found 3-1/4"  
Brass Cap  
0.3' Above Grade  
Good Condition

FOUND PROJECT CONTROL				
Point #	Northing	Easting	Elevation	DESCRIPTION
101	113500.4337	36768.0500	167.78	Fd BC/Rod[DOT]: CHIN 15.4
556	133375.4262	33894.8620		Fd BC[USN]: BM 58
557	131056.2141	30489.5525		Fd BC[USC&GS]: CHINIAK SW BASE
558	117614.9392	24295.8586		Fd BC[USC&GS]: BM NOME

RECOVERED MONUMENTS			
Point #	Northing	Easting	DESCRIPTION
701	115020.2324	16372.4989	Fd BC[1300S]: AK DIV. OF LAND ROW/W CORNER TR. 4
702	118043.3327	17985.9841	Fd AC[LS10201]: SE TR 4 BELLS FLATS
703	116518.5604	16904.6554	Fd BC[1641S]: AK DIV. OF LAND ROW/SW CORNER TR. A
704	113717.8876	21903.4872	Fd BC[BLM]: L38 C2[L34 C3/L1

SET PROJECT CONTROL				
Point #	Northing	Easting	Elevation	DESCRIPTION
1	117386.6408	17883.5575	13.28	Set BC/ROD[USKH]: CP1
2	114198.8944	19822.4408	43.96	Set BC/ROD[USKH]: CP2
3	113640.4550	23329.5924	18.92	Set BC/ROD[USKH]: CP3
4	114940.6596	28301.3484	335.14	Set BC/ROD[USKH]: CP4
5	114854.3638	32759.4095	313.16	Set BC/ROD[USKH]: CP5
41	114047.4855	20850.8442	18.43	Set Rbr/RPC[USKH]: CONTROL POINT
42	114108.5813	20429.8210	21.97	Set Rbr/RPC[USKH]: CONTROL POINT
43	117659.3341	17854.9619	18.74	Set Rbr/RPC[USKH]: CONTROL POINT
44	118060.6488	18070.7069	17.29	Set Rbr/RPC[USKH]: CONTROL POINT

Kodiak Recording District  
State Business – No Fee  
This survey does not constitute a subdivision  
as defined by AS 40.15.900(5)



STATE OF ALASKA  
DEPARTMENT OF TRANSPORTATION  
AND PUBLIC FACILITIES  
SURVEY CONTROL DIAGRAM

Record Of Survey  
PREVENTIVE MAINTENANCE CHINIAK HIGHWAY  
MP 10-15 PAVEMENT PRESERVATION  
AKSAS 56699

Located within T28S R20W Secs 31-32, and 34-35, and T29S  
R20W Secs 3-6, and T29S R21W Sec 1, Seward Meridian

DRAWN	EFG	DATE	01/26/2015	SCALE	N/A
CHECKED	GMG	DATE	01/26/2015	SHEET	2 OF 2