

2198 AKSAS 53417 King Salmon Airport

Alaska DOT & PF

AKSAS Project No. 53417

King Salmon Airport



*"Rite in the Rain"*

ALL-WEATHER  
CROSS SECTION

No. 370-6F

Topography & As-Builts

Survey Field Notes

Book 5 of 6

**DOWL**  
ENGINEERS  
A Division of DOWL LLC



DOWL 110 050038.2 ER 2198

# CONTENTS

PAGE	REFERENCE	DATE
1-3	Topography - T29B5526	8-14-07
4	Site sketch	8-14-07
5-11	Utility As-Builts	8-15-07
12-14	Topography - T29B5527	8-15-07
15	Blank Page -	—
16	RTK TOPO 30861-31854	11-2008
17	—	—
18	Stake out SKETCH	—
19-21	RTK TOPO 31855-32664	—



## ALL-WEATHER CROSS SECTION BOOK

Name Dowl

Address 4041 B Street

Anchorage AK 99503

Phone 907-562-2000

Project King Salmon Airport

AKSAS 53417

This book is printed on "Rite in the Rain" All-Weather Writing Paper - A unique paper created to shed water and enhance the written image. It is widely used throughout the world for recording critical field data in all kinds of weather. For best results, use a pencil or an all-weather pen.

Specifications for this book

Page Pattern		Cover Options	
Left Page	Right Page	Polydura Cover	Fabrikoid Cover
1/10" Grid	1/10" Grid	N/A	Item No. 370-6F





**DOWL ENGINEERS**

**ALASKA TESTLAB**

**D i v i s i o n s   o f   D O W L   L L C**

**4040 B Street · Anchorage, Alaska 99503**

THE UNDERSIGNED, REGISTERED PROFESSIONAL LAND SURVEYOR(S) IN THE STATE OF ALASKA, DOES (DO) HEREBY CERTIFY THAT THE WORK CONTAINED ON PAGES 01 THRU 14 HAS BEEN PERFORMED BY ME (US) OR BY OTHERS UNDER MY (OUR) DIRECT SUPERVISION AND THAT IT MEETS THE ALASKA DEPARTMENT OF TRANSPORTATION AND PUBLIC FACILITIES SPECIFICATIONS.





D59029B

KING SALMON AIRPORT KRSAS 57922

TOPOGRAPHIC SURVEY  
 T @ (432) HI 5.38 FE 1.610 M  
 BS @ (430) LR 351 FE 1679 M

PE	Hor X	ZEN X	S. DIST	ROD H	CODE
29496	00-00-00	89-54-05	862.148	5.51	✓ SHOT
29497	127-08-20	91-46-51	298.369	5.13	✓ SHOT
29498			901.550		
29498 <sup>4</sup>			776.587		BEG
29495			789.894		
29504			740.944		BEG
29508			736.310		
29509			740.444		
29531			635.319		BEG
29550			465.102		BEG
29556			646.089		BEG
29560			643.688		BEG
29562			646 <sup>7</sup> .696		
29563	257-39-17	89-38-59	662.984		

LEICA 1102+

55 °F CLOUDY, RAIN

SN 629918

PPM = +1.5

JOB FILE 12935526

August 14, 2009

2008 01  
 COREY RICE PLS, PC  
 JASON SMITH 1 ✓  
 RON HARP TX

DESC

CHK/430 TYP 2" DOWL ALCAP

3D-✓

CHK/431 MAGNAIL IN ASPH

HD = 0.000

VD = 0.041

X = 0.00008

GSI

EPO1.

ELEC/LP

TYPICAL, AIRPORT LIGHT, BLUE, NO CONCRETE BASE

EC01

CONC01

IMPO1

TYP. TAXIWAY &amp; RUNWAY SIGN "A II"

EPO2

EPO3

EC02

IMPO2

TYPICAL TAXIWAY &amp; RUNWAY SIGN "AR" ALSO USE AS CONC CLEV.

ELEC/3-BOX

ELEC/MH



D59029B

KING SALMON AIRPORT AKSAS 59992

TOPOGRAPHIC SURVEY

T @ 432 H 5.28 EL 1.010 M

BS @ 430 H 5.51 EL 1.079 M

PE Hor # ZEN # S. DIST Rods H CONX

29564 950-30-34 90-21-58 529.517 5.13 BEG

29597 483.532 BEG

29610 444.286 BEG

29613 494.293 BEG

29617 493.985

29618 493.388 BEG

29629 598.943 BEG

29633 595.732

29634 597.511

29635 585.105

29636 583.614 BEG

296340 582.463 BEG

29642 276-30-27 90-28-48 409.188 8.38 BEG

29643 531.393 BEG

LEICA 1105+

55°F CLOUDY RAIN

DPM = +1.5

SV 629918

JOB FILE T29BSSRG

AUGUST 14, 2007

2198 02

C RICE PLS, PC  
S SMITH P.M.  
R HARP T

DESC

GBO1

GBO2

CU01 18" CMP, OPEN/5 of PIPE, GOOD COND

EC03

CONC03

IMPO3 RUNWAY &amp; TAXIWAY SIGN "B 11"

EC04

CONC04

ELEC/LP TYPICAL, BELOW RUNWAY LIGHT

ELEC/S-BOX

EC05

IMPO5 TYPICAL TAXIWAY &amp; RUNWAY SIGN "B 11"

CU02 2" CMP, GOOD COND.

EP04



D590298

KING SALMON AIRPORT

TOPOGRAPHIC SURVEY

T @ 432 H. 5.28 ft 1.610 m

BS @ 430 H. 5.51 ft 1.679 m

PC HOR \* ZEN \* S DIST ROD H CODE

29648 298 06-49 89-55-24 440.694 8.30 BEG

29655 298 05-12 89-59-10 342<sup>6</sup>.812 11.42 BEG

29700 348.152 BEG

29718 548.520

29822 828.667 BEG

29827 741.312 BEG

29833 816.169 BEG

29839 742.806 BEG

29844 809.942 BEG

\* 29852 359-59-58 89-54-05 862.292 5.51 ✓ SHOT

LEICA 1105+

SN 6297118

55°F CLOUDY RAIN

PM = +1.5

2098 03

C RICE DES, PC

J SMITH PM

R HARP T

JOB FILE T2985526

August 14, 2007

DESC

GB03

DLO1

TOP01

ASPH

GB04

EG01

EG02

FLO1

TOP02

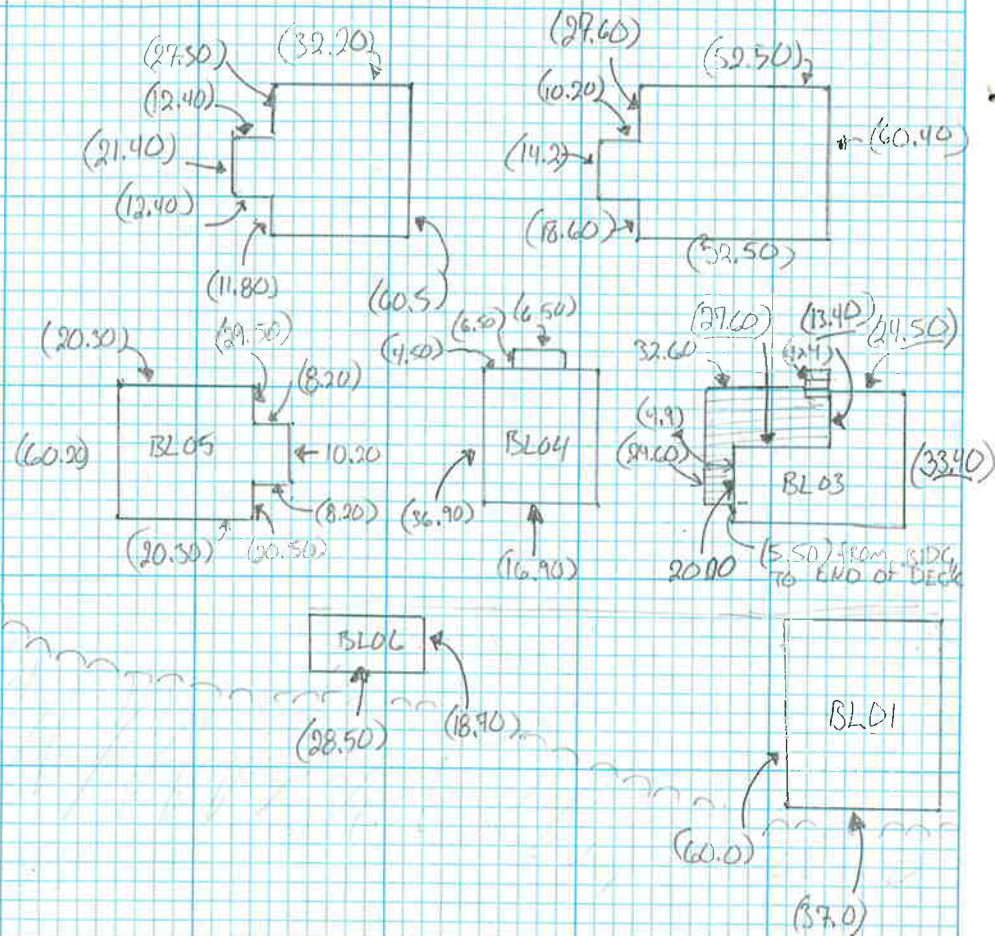
CHW/430

\* GUN HAD TO BE SHOT IN REFLECTORLESS,  
WOULD NOT SHOOT IN IR.



D590295

# KING SALMON AIRPORT FIELD BOOK SKETCH



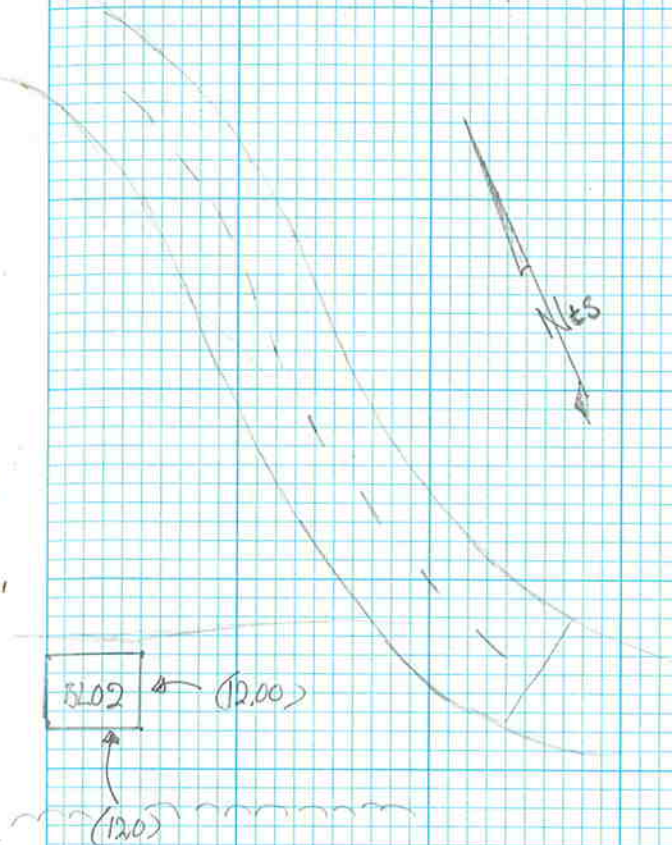
2008 04

COREY RICE PLS, PC

JASON SMITH M

RON HARP

August 14, 2009



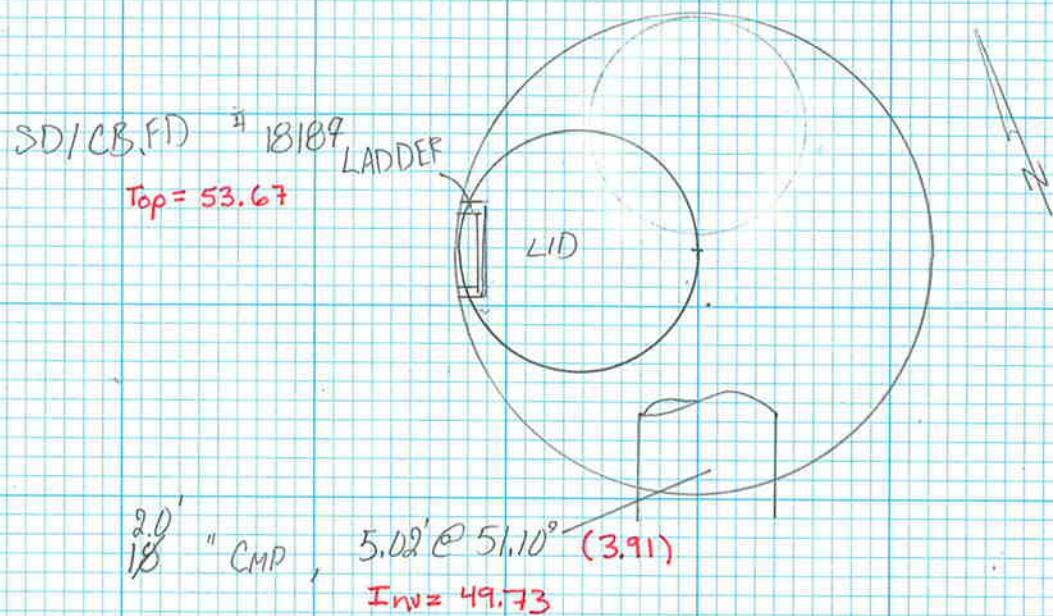
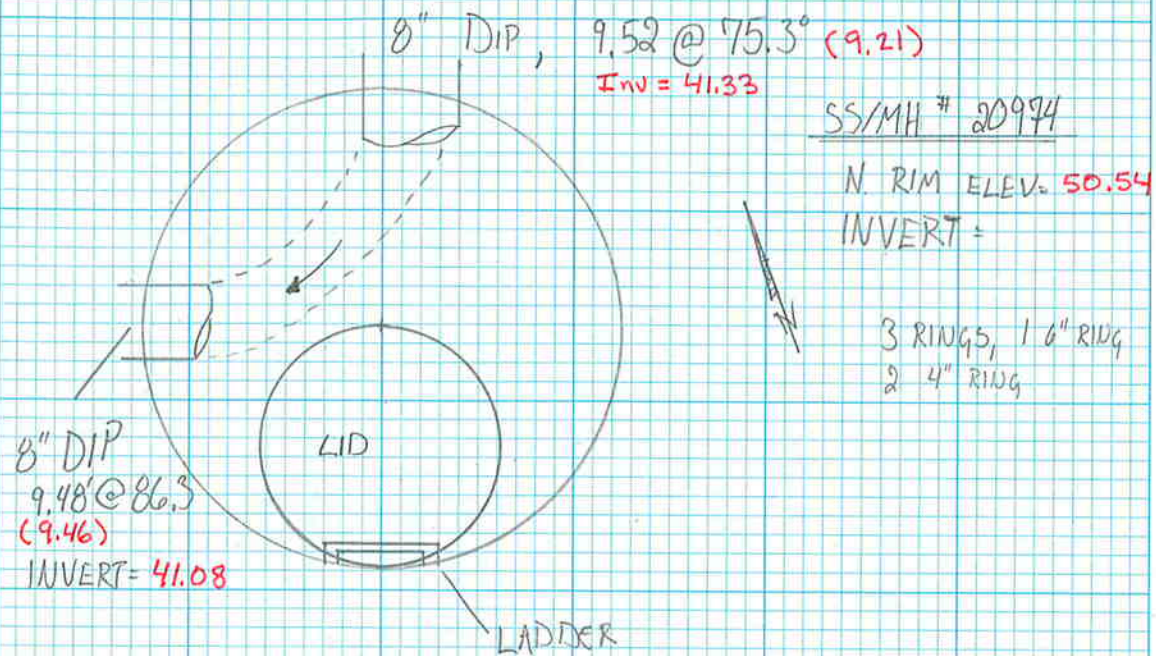
FOR BLD1 - BLD6, SEE  
FB 2196-(70-73)



D590298

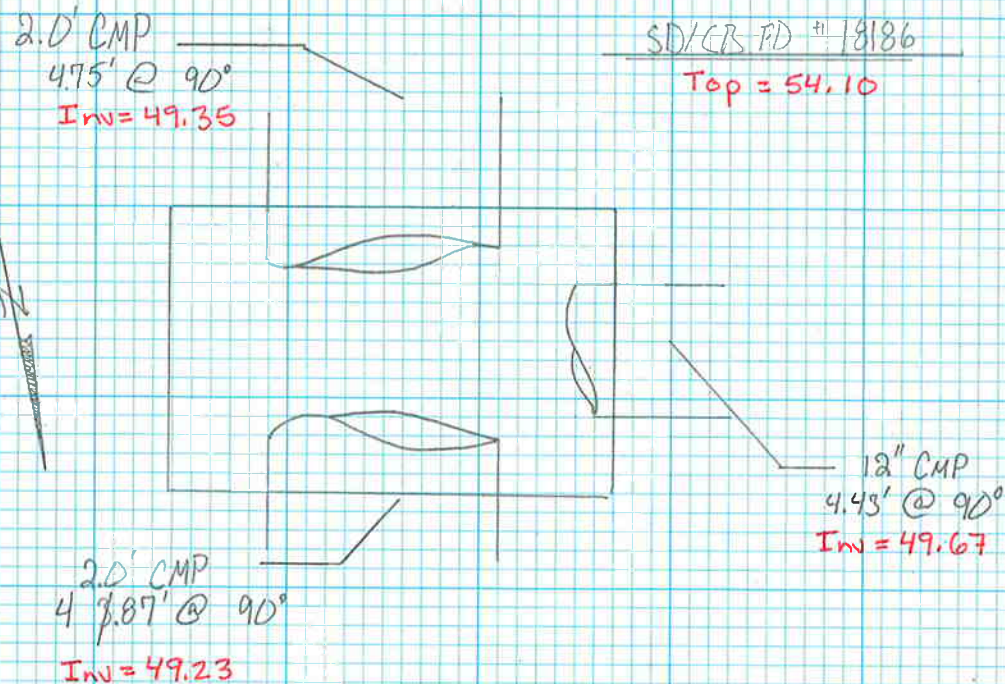
KING SALMON AIRPORT  
UTILITY AS-BUILDS

AKSAS 57922



August 15 2007

2098 05





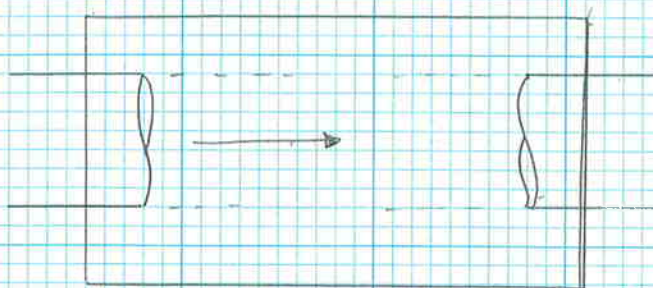
D59029B

KING SALMON AIRPORT  
UTILITY AS-BUILDS

AKSAS 5792D

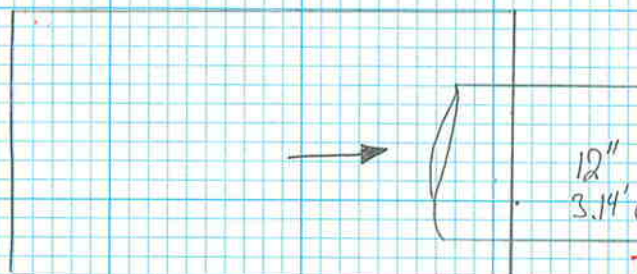
SD/CB.FD #18185

Top = 53.67

12" CMP  
3.16' @ 90°  
Inv = 50.5112" CMP  
3.22' @ 90°  
Inv = 50.45

SD/CB.FD 18184

Top = 53.82

12" CMP  
3.14' @ 90°  
Inv = 50.68

August 15, 2007

2038 06

COREY RICE PLS, JR  
JASON SMITH  
RON HARP

SS/MH 202084

Top = 52.49

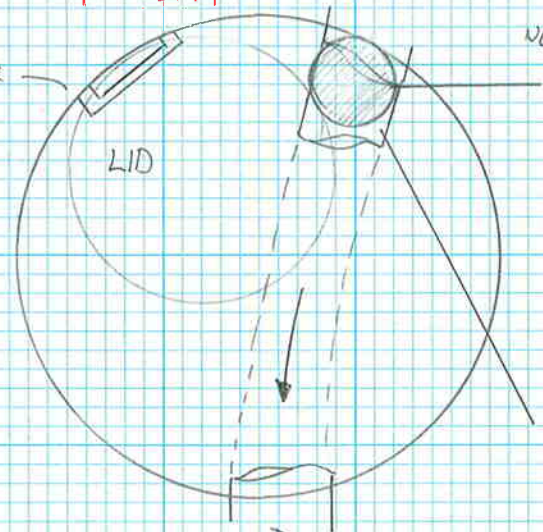
LADDER

LID

NO RINGS

VERTICAL PIPE, COMES FROM  
BLDG, DROPS DOWN TO BEAVER  
SLIDE. PIPE MEASURES  
7.64' @ 90°, IS A  
4" STEEL DIP

Pipe = 44.87

BOTTOM OF BEAVER SLIDE  
14.80' @ 90°  
INV = 37.698" DIP,  
15.57' @ 74.5° (15.00)  
INVERT = 37.49



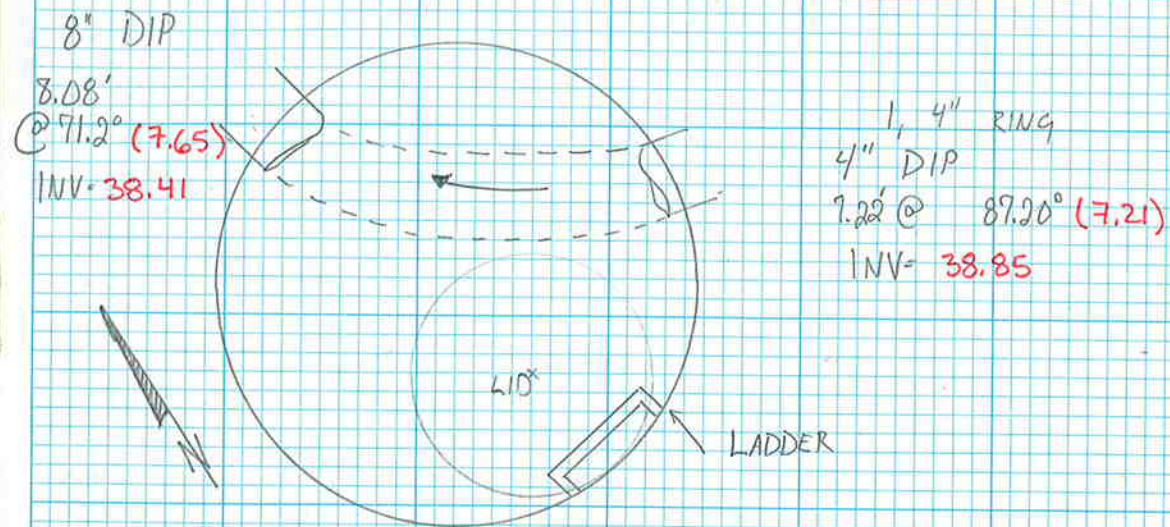
DS9029B

KING, SALMON AIRPORT AKSAS  
UTILITY AS- BUILDS

57929

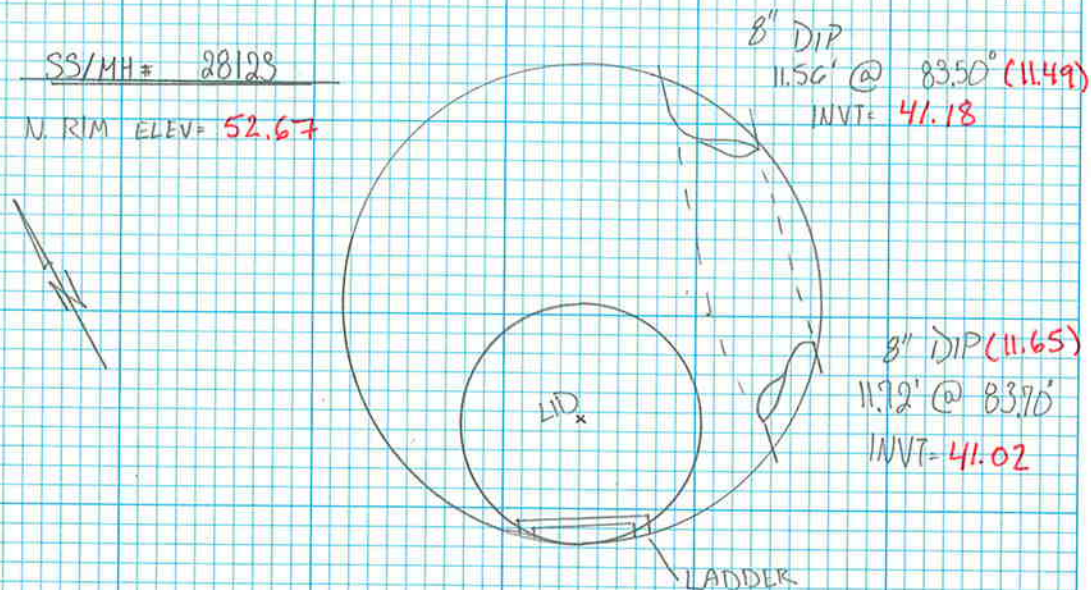
SS/MH 20234

N. RIM ELEV= 46.06



SS/MH# 28128

N. RIM ELEV= 52.67

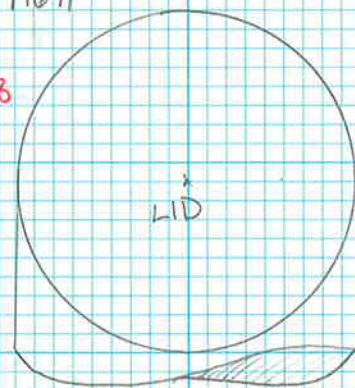


August 15, 2007

2098 J7  
C. RICE PLS, PC  
J. SMITH  
R. HARP

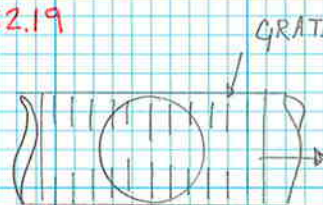
SD/CB.FD # 19641

N. RIM ELEV= 50.88

21" BARREL  
2.72' @ 90°  
INVT= 48.16

SD/CB.FD # 25031

Top= 52.19

1.32' @ 90°  
INV= 50.87S. PIPE TRAVELS 40.0'  
TO OPEN DITCH.



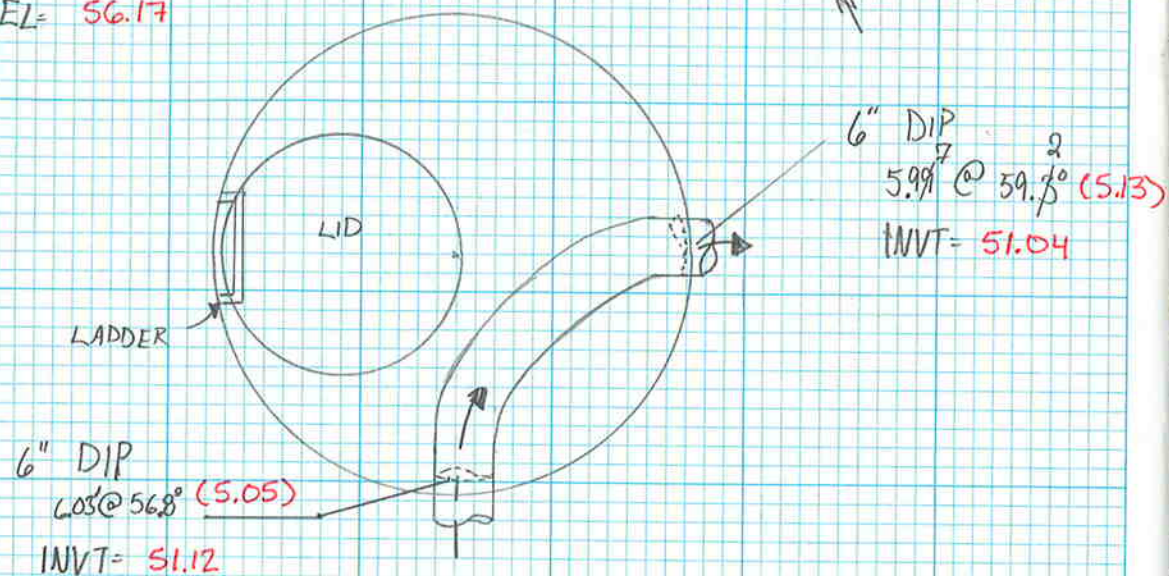
D570295

KING SALMON AIRPORT  
UTILITY AS-BUILDS

AKSAS 57922

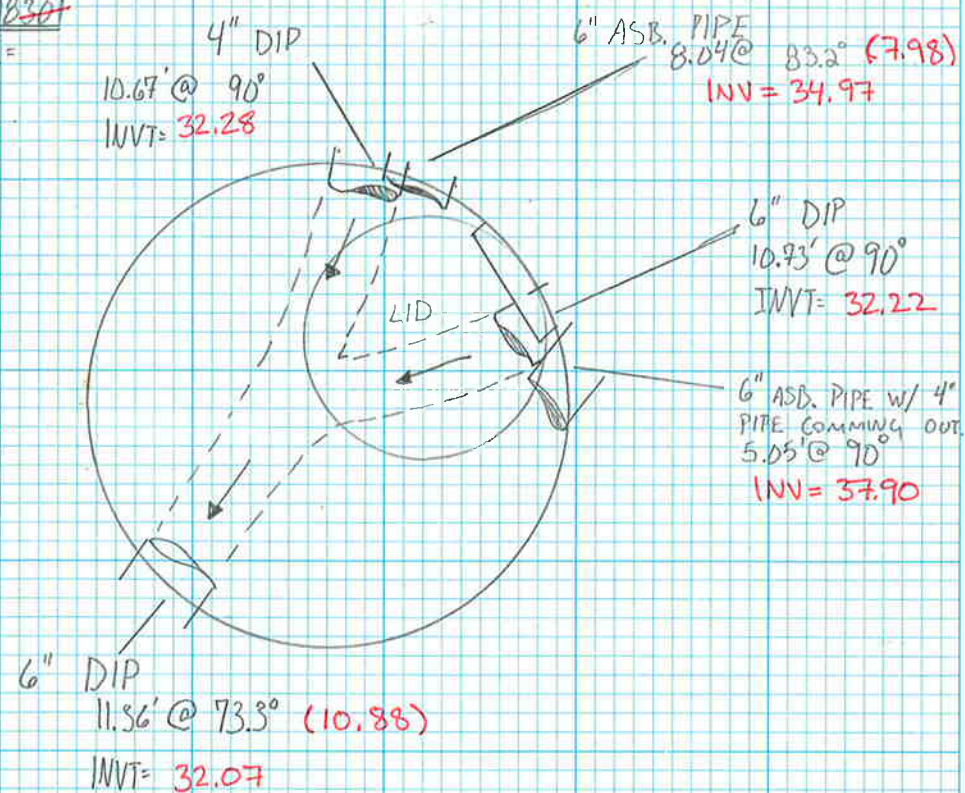
N. RIM  
EL= 56.17

SS/MH # 21312



August 15 2009

2198 US

C RICE  
J SMITH  
R HARPSS/MH 18301  
N RIM ELEV=



D59029B

KING SALMON AIRPORT AKSAS 57980  
UTILITY AS-BUILDS

SS PUMPING STATION

SS/MH 18699

N. RIM ELEV = 36.82

6" DIP

852' @ 89.2° (8.52)

INVT = 28.30

6" DIP

855' @ 77.9° (8.36)

INVT = 28.46

SHOT TAKEN FROM  
TOP OF PIPE

4" DIP

960' @ 27.8° (1.99)

INVT = 34.83

6" DIP (7.88)

7.95' @ 82.6°

COULD NOT  
SHOOT BOTTOM  
OF PIPE,  
SHOT TAKEN  
FROM TOP

INVT = 28.94

- 0.5

7' DIAM  
(28.44)

LID

11.92 TO FINISHED FLOOR

6" DIP

880' @ 72.3° (8.38)

INVT = 28.44

August 15, 2009

2098 09

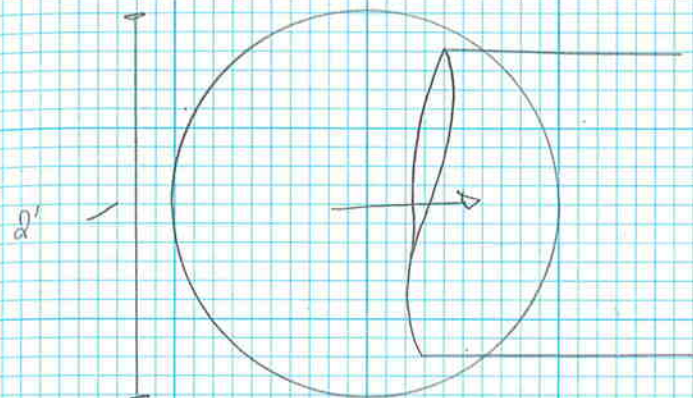
C RICE

J SMITH

R HARP

SD/CB.FD # 25714

Top = 55.12



18" CMP

3.23' @ 90°

INVT = 51.89

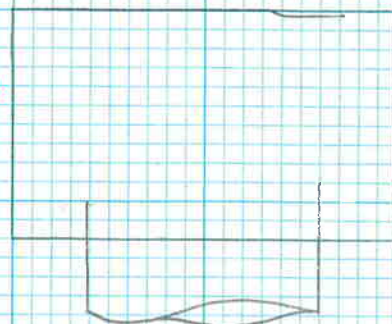


D59029B

KING SALMON AIRPORT  
UTILITY AS-BUILDS

SD/CB.FD 25431

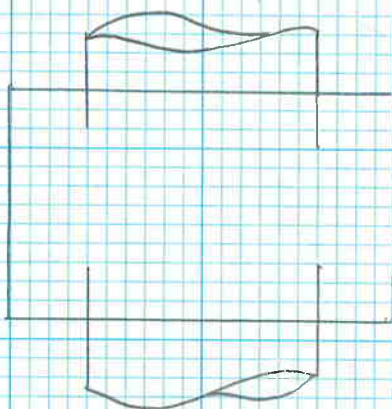
SOUTH RIM ELEV= 56.44



2' CMP  
3.31' @ 90°  
INV = 53.13

SD/CB.FD #25547

EAST RIM ELEV= 55.03



2' CMP  
3.27' @ 90°  
INV = 51.76

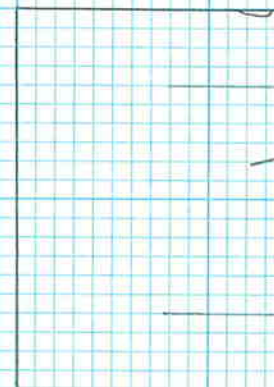
3.38' @ 90°  
INV = 51.65

AUGUST 15, 2007

2098 10  
C RICE PLS, PC  
J SMITH  
R HARP

SD/CB.FD 27080

EAST RIM ELEV.



2' CMP  
2.54' @ 90°



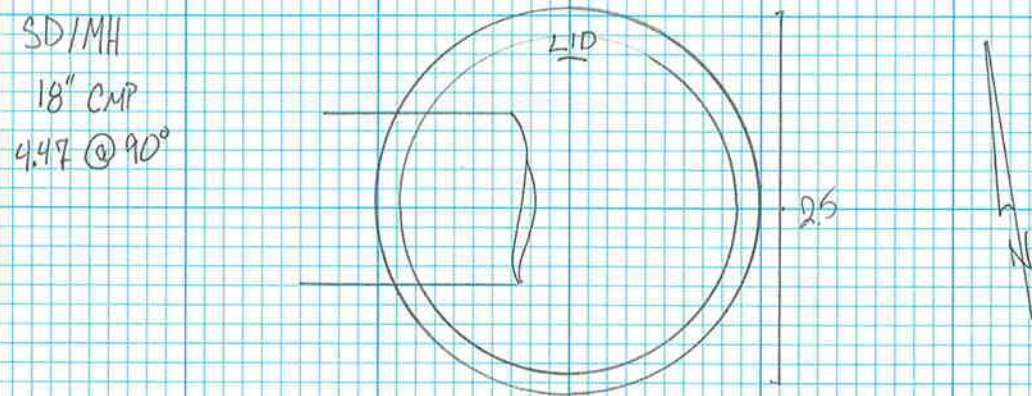
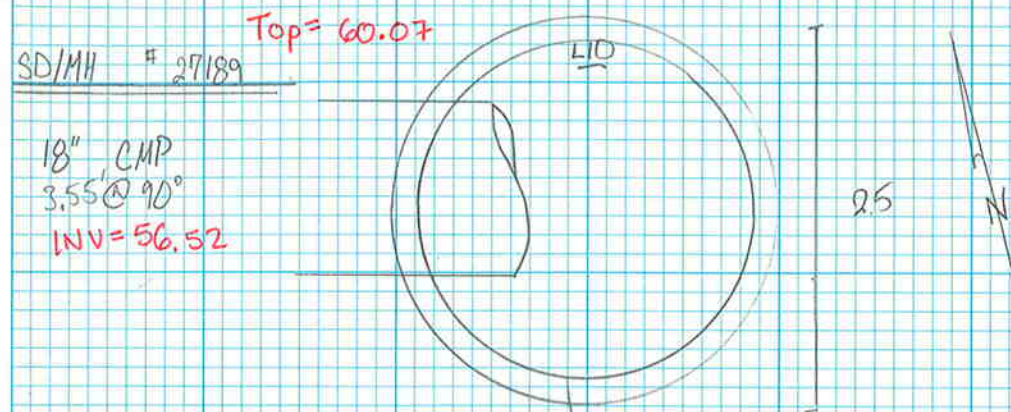
D59029B

KING SALMON AIRPORT  
UTILITY AS-BUILDS

AKSAS 57922

AUGUST 15, 2007

2098 11





D59029B

KING

SALMON

AIRPORT

AKSAS

59922

TOPOGRAPHIC SURVEY

T@

(12)

5.36 PL

1.634

M

BS@

(14)

5.42 PL

1.654

M

PL

HOR X

ZEN X

S

DST

ROD

HI

CODE

29853

179-59-54

89-58-12

1000.130

5.13

✓ SHOT

29854

351-57-53

90-25-04

352.499

10.99

29855

558.031

29856

690.062

29857

498.581

29858

20-38-44

90-17-12

223.708

5.13

29881

750.286

BEG

29885

750.741

BEG

29893

179-59-41

89-58-16

1000.158

5.13

CHK ✓ SHOT

29894

359-59-57

90-12-41

1749.934

5.42

✓ SHOT

END OF SETUP

LEICA 1105+

65°F CLOUDY

SN 629918

PPM=

2198 12

JOB FILE T29B55.27

AUGUST 15 2005

C RICE PLS, PC  
J SMITH P  
R HARP X

DESC

CHK/II

TYP. 2" DOWL ALCAP

-0.021

+0.

ELEC/FF

NOTE, FINISHED FLOOR OF ELEC/MH # 27193

ELEC/FF

" ELEC/MH # 28124

ELEC/FF

" ELEC/MH # 27300

ELEC/FF

" ELEC/MH # 27075

GSI

ECDI

IMPOI

TAXIWAY

RUNWAY SIGN "6", USE 1st SHOT FOR  
CONCRETE ELEVATIONS.

CHK/II

CHK/II

\* NOT GOOD FOR VERTICAL CHECK



D59029B

KING SALMON AIRPORT AKSAS

57929

TOPOGRAPHIC SURVEY

T @ 552 HI 6.38 FE 1.945 M

BS @ 432 HI 5.57 FE 1.699 M

PL	HORX	ZENX	S. DIST	ROD HI	CODE
----	------	------	---------	--------	------

29895	10-00-00	90-04-18	1051.074	5.57	✓ SHOT
-------	----------	----------	----------	------	--------

29896	353-48-02	90-12-54	1131.552	8.15	
-------	-----------	----------	----------	------	--

29899	345-38-05	90-13-14	750.018	5.13	
-------	-----------	----------	---------	------	--

29907	322-44-58	89-54-46	653.165	11.31	
-------	-----------	----------	---------	-------	--

29908	322-08-30	90-03-12	528.997	5.13	
-------	-----------	----------	---------	------	--

29910	198-50-59	89-53-38	359.801	5.13	✓ SHOT
-------	-----------	----------	---------	------	--------

29911	359-59-58	90-04-20	1051.073	5.57	✓ SHOT
-------	-----------	----------	----------	------	--------

LEICA 1105+

65°

2098 13

SN 629718

JOB FILE T2985527

DESC

CHK/432

TYP 2" DOWL

MAGNAIL SET IN ASPH

ELEC/FF

FINISHED FLOOR OF ELEC/MH # 28992

ASPH/

ELEC/FF

FINISHED FLOOR OF ELEC/MH # 29563

GSI

CHK/709

3 1/2" BRASS CAP SET IN CONC BOLLARD

CHK/432

HD = -0.066

VD = +0.031

X = -0.00003



D59029B

KING

SALMON AIRPORT

AKSAS

57922

TOPOGRAPHIC SURVEY

T@ M

HR 5.32 ft 1.623 m

BS@ B

HR 5.40 ft 1.646 m

PL

HOR

ZEN

S. DIST

29912

89 48 08

999.997

5.40

✓ SHOT

29913

217-20-51

89-22-22

616.369

5.13

✓ SHOT

29914

275-56-17

90-32-57

227.283

8.25

BEG

29916

00-00-01

89-48-09

999.996

5.40

✓ SHOT

— END OF SETUP —

LEICA 1105+

65° CLOUDY

SN 629718

PPM=

JOB FILE # 729BSS97

AUGUST 15 2009

SD ✓

CHK1/13

TYP 2" DOWL ALCAP

HD: -0.021

VD: +0.045

X = +0.00010

CHK4/122

TYP 2" DOWL ALCAP

CU02

8" CMP. GOOD COND

CHK1/13

2098 14

C. RICE PLS. PC

J. SMITH P ✓

R. HARP T



2198 15



D60137A — KING SALMON AIRPORT ARESA"  
— STAGE III RTK TOPO —

POINT	MINS/UNIT	HT READING	ANT/OS	LOCAL TIME	CR/SATS
30861	RTKROW/115	6.562 F	ANT 1230 44 POLE	14:28	.03/8-4-16
30862				14:37	.04/7-4-15
30863				14:44	.05/19-4-14
30864				14:46	.04/8-4-14
30885				14:55	.05/8-5-14
31001				15:43	.04/6-5-13
31008				15:47	.05/6-5-14
31013				15:50	.06/6-6-14
31026				15:58	.05/6-6-15
31853				16:12	.04/5-5-14
31854				16:22	.05/5-6-17

COREY RICE PLS  
MONTE WILLIAMS TK

WX 30°F  
SNOW

NOV 10 08 2018 16

DESC

CURVE (429) 2" ACAP

CURVE (421) 2" ACAP

RA01

RA02

AS/

BEG RA01

BEG RA02

BEG RA03

ASPH

CURVE (420) 2" ACAP

CURVE (421) 2" ACAP

(429)  
DIST 0.030  
FILL 0.402

(421)  
DIST 0.021  
FILL 0.055

(420)  
DIST 0.022  
CUT 0.035

(421)  
DIST 0.051  
CUT 0.020

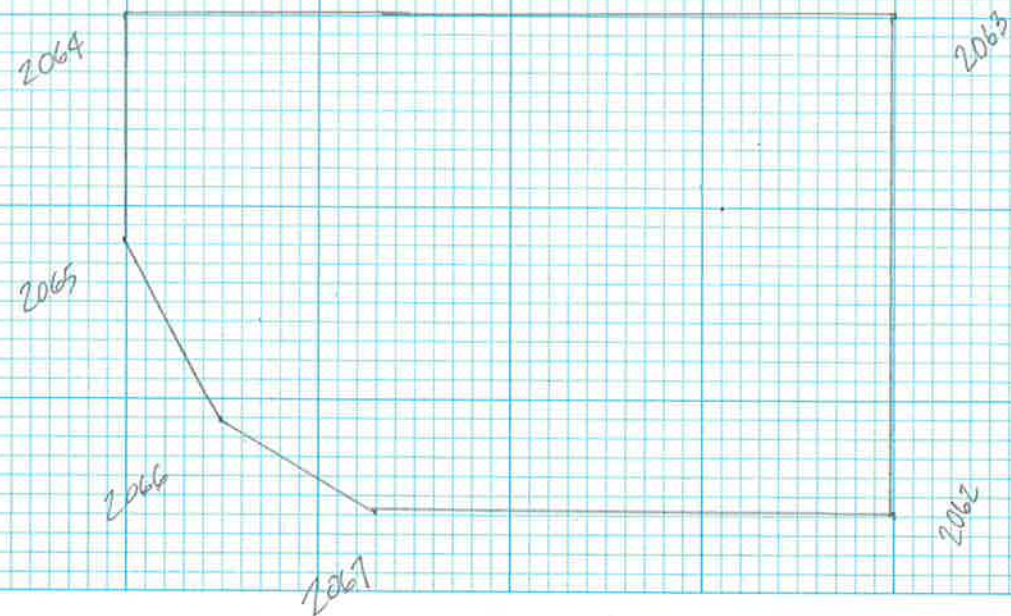
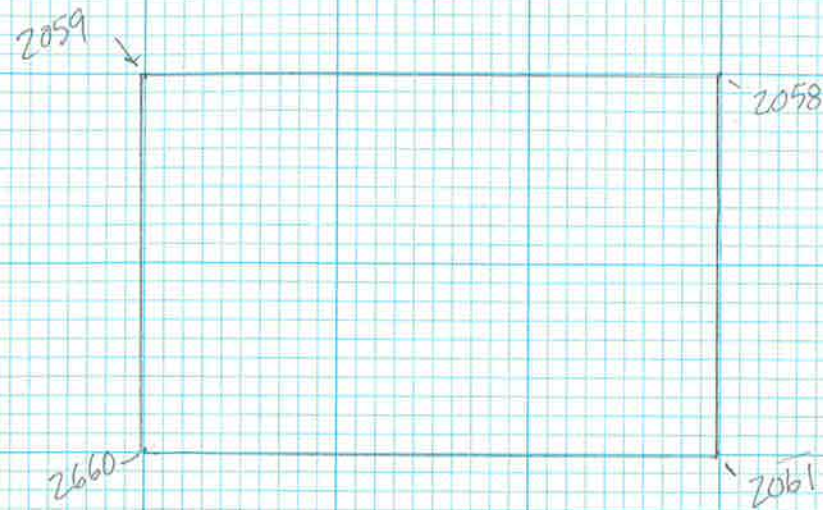


2098 17

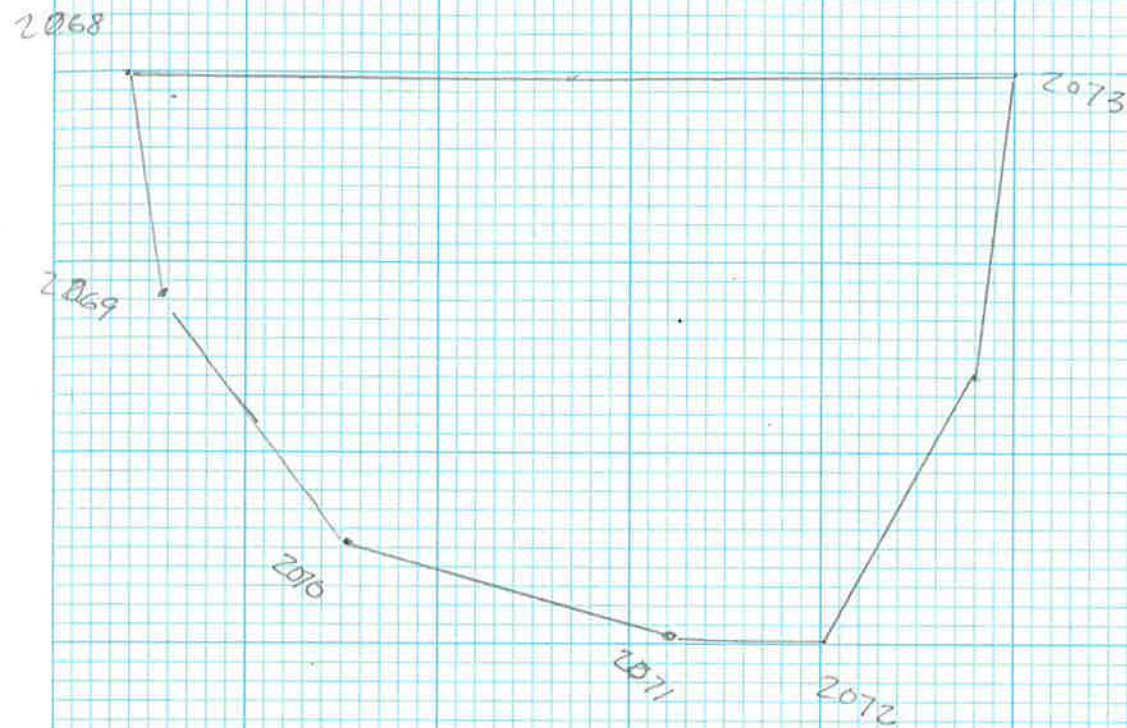


D60137A - King Salmon Airport Stage III -

- Sketch of Comp. Points for Additional  
Areas to Topo -



2098 18





D60173A KING SALMON AIRPORT AKSAS #

— STAGE - 3 TOPO —

POINT	MISH/UNIT	HT READG	ANT/OS	LOCAL TIME	CR/SATS
31855	RTR OV/IN	6.562 F	AV 1230 AG POLE	9:20	0.035/8-6-16
31856				9:27	0.040/8-7-16
31857				9:51	0.055/7-6-15
31866				10:02	0.039/6-7-13
31869				10:05	0.042/ " "
31870				10:07	0.062/6-7-14
31881				10:11	0.039/7-7-14
31883					0.040/ " "
31885				10:16	0.038/ " "
31886				10:17	0.044/ " "
31949				12:03	0.028/9-5-19
31950				12:59	0.040/8-5-19
31951				13:07	0.046/8-4-18
31957				13:19	0.035/8-6-20
31962					

COREY RICE  
MONTE WILLIAMS

WAX 28PF  
FLY CLOUDY

NOV 11 08 2008 19

DESC

CHK/420 2" ALAP KSA 420

CHK/421 2" ALAP KSA 421

CS/

BEG R401

BEG R402

BEG R403

RD/SIGN 10 MPH / CHILDREN AT PLAY

RD/SIGN STATE TROOPERS

COM/RED TELE PED.

CS/

CHK/421 2" ALAP KSA-421

CHK/420 2" ALAP KSA 420

BEG FE01

CHK/432 MAGNAN

< DIST 0.051 CUT 0.022 >



D60137A — KING SALMON AIRPORT AKSAS  
— STAGE 3 TOPOGRAPHY —

POINT	INSTR/UNIT	HT	READING	ANT/OS	LOCAL TIME	CORR	SATS
31990	RTKRON/15	6.562R	AN 123044	POLE	12:57	0.039/	8-5-13
31991					13:05	0.044/	" "
32009					14:37	0.030/	10-6-23
32009					14:39	0.032/	10-6-21
32027					14:56	0.031/	8-6-19
32167					16:20	0.051/	9-7-19
32168					16:22	.055/	" "
32200					16:45	.05/	10-5-22
32218					17:03	.041/	12-5-22
32219					17:05	.035/	" "
32240					17:18	0.031/	12-6-20
32281					17:45	0.04/	12-6-22

COREY RICE PLS  
MONTE WILLIAMS

WX 35°F  
PRY CLOUDY

NOV 12 08 2098 20

DESC

CNCR/550

AS/

CNCR/450

PNO1

ASPH

CNCR/426

AS

Z AF/TX LT TAXIWAY LITE SIGN TOP CNT

CNCR/450

Z AF/TX

CL OF LITED BOX SIGN

[C→]

CNCR/450



D60137 A — KING SALMON AIRPORT AKSAS #  
 — STAGE - 3 TOPO —

POINT	MINS UNIT	AT READ	ANT/OS	LOCAL TIME	CQ	SATS
32552	RTKROV 15	6562	AX123099	14:57	0.049/	8.6-15
32553				15:00	0.034/	7.7-15
32557				15:07	.050/	7.7-16
326A6				15:42	.044/	7.7-20
326A9				15:54	.050/	7.6-19
32660				16:07	.061/	8.5-21

3266A → 32668 EDITED SHOTS

COREY RICE PLB  
 MONTE WILLIAMS ST

WX

2008 21

NOV 13 2008  
 14

DESC

CAGE/445

AS

KSPH

CAGE/446

PAV

BLOG 4' BP

GS/

5.4

82

19.3

4.7

40°