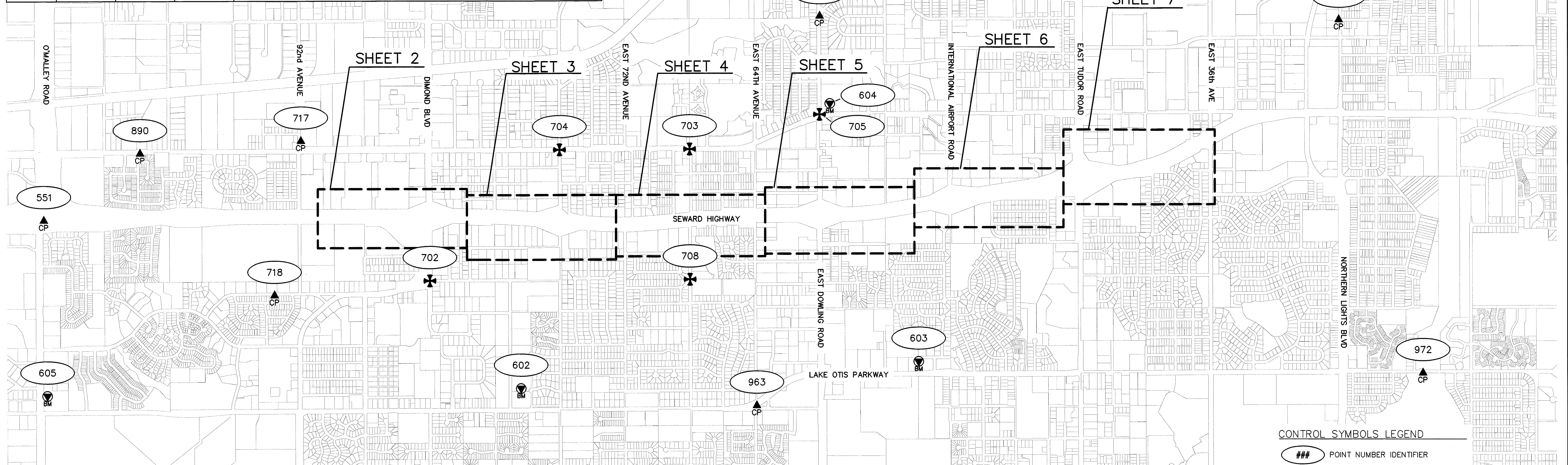


VERTICAL CONTROL POINTS				
POINT	NORTHING	EASTING	ELEVATION	DESCRIPTION
601	337279	351061	105.90'	Fd BC[TNH]: CB 5C BC IN WALL AT FIREWEED THEATER (NOT SHOWN)
602	315612	356935	183.44'	Fd BC[GAAB]: GAAB 20 BC IN WALL AT ALASKA BRICK CO.
603	323677	356401	162.82'	Fd BC[GAAB]: GAAB 22 BC IN WALL INX. LAKE OTIS PARKWAY AND 54TH COURT
604	321880	351161	124.25'	Fd BC[GAAB]: GAAB 33 BC IN WALL INX. OLD SEWARD AND DOWLING
605	306002	357080	230.66'	Fd BC[DOWL]: GAAB 63 BC IN WALL INX. O'MALLEY ROAD AND LAKE OTIS PARKWAY



NOTES

- Project horizontal control and property corners were surveyed using networked static GPS techniques. GPS measurements were performed using Trimble 5700 & R8 series receivers running v2.32 firmware and Trimble Geomatics Office v1.62 and Trimble Business Center v2.20 post-processing software.
- All elevations shown on this plot were established via Third-Order differential leveling using a Trimble DINI Digital Level.
- Property information shown herein is provided for orientation purposes only and does not reflect legal property line or R.O.W. locations.
- The minimum closure of all traverses meets or exceeds 1:10,000.
- The field survey was completed during July 2008 through November 2009 by USKH Inc.
- All dimensions, coordinates and elevations shown are in U.S. Survey Feet unless otherwise noted.
- Horizontal coordinates of Vertical Bench Marks are approximate only.

HORIZONTAL CONTROL STATEMENT

Coordinate System:
This project is located entirely within the Anchorage Bowl 2000 adjustment, a local surface grid coordinate system expressed in U.S. Survey feet units developed by the Alaska Department of Transportation.

Basis of Coordinates:
The Basis of Coordinates is NGS Station O'Malley, located near the intersection of the New Seward Highway and O'Malley Road. Said station has Anchorage Bowl 2000 coordinates of 303939.2310 N, 353362.5446 E. U.S. Survey Feet.

Basis of Bearings:
The Basis of Bearings is a local plane bearing between NGS Station O'Malley and NGS Station Loop 2 USE RM 3 1964. NGS Station Loop 2 USE RM 3 1964 bears N 01°43'26.4"E a distance of 49488.4476 feet from NGS Station O'Malley. NGS Station Loop 2 USE RM 3 1964 has Anchorage Bowl 2000 coordinates of 353405.2778 N, 354851.3982 E. U.S. Survey Feet.

Translation Parameters:
To convert the local coordinates to NAD83 (92) State Plane coordinates expressed in U.S. Survey Feet, translate using +2296868.6878 N usf, +1312517.4904 E usf, and scale using 0.9998910192.

VERTICAL CONTROL STATEMENT

Vertical Datum:
MOA datum in U.S. Survey Feet holding MOA Benchmark "CB 5C" as 105.90', "GAAB 20" as 183.44', GAAB 22 as 162.82', "GAAB 33" as 124.25', "GAAB 63" as 230.66', and Point 555 also being "BM3" from the SCD for AKSAS 59770 (ROS 2008-38) as 147.37'.

Surveyor's Certificate

I hereby certify that I am properly Registered and Licensed to practice Land Surveying in the State of Alaska, and that this drawing represents a survey made by me or under my direct supervision, and that the monuments shown hereon actually exist as described, and that all dimensions and other details are correct to the extent shown hereon.

Jacob M. Gerondale
Jacob M. Gerondale

LS-11758

Date

Anchorage Recording District Plat No. 2013-109

CONTROL SYMBOLS LEGEND

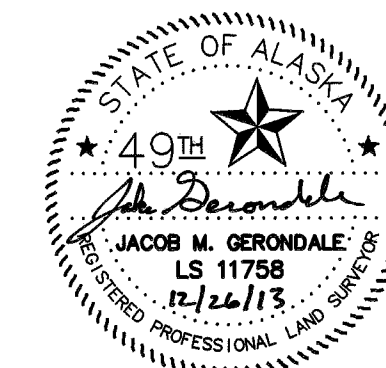
- ### POINT NUMBER IDENTIFIER
- ✕ PRIMARY GOVERNMENT MONUMENT
- ⊕ PRIMARY CL MON
- ▲ RECOVERED DOT&PF CONTROL
- ⊙ SET PROJECT CONTROL
- ⊙ GPS
- ⊙ VERTICAL BENCHMARK
- ✕ TBM TEMPORARY BENCHMARK



U.S. SURVEY FEET

Anchorage Recording District
State Business - No Fee
This survey does not constitute a subdivision
as defined by AS 40.15.900(5)

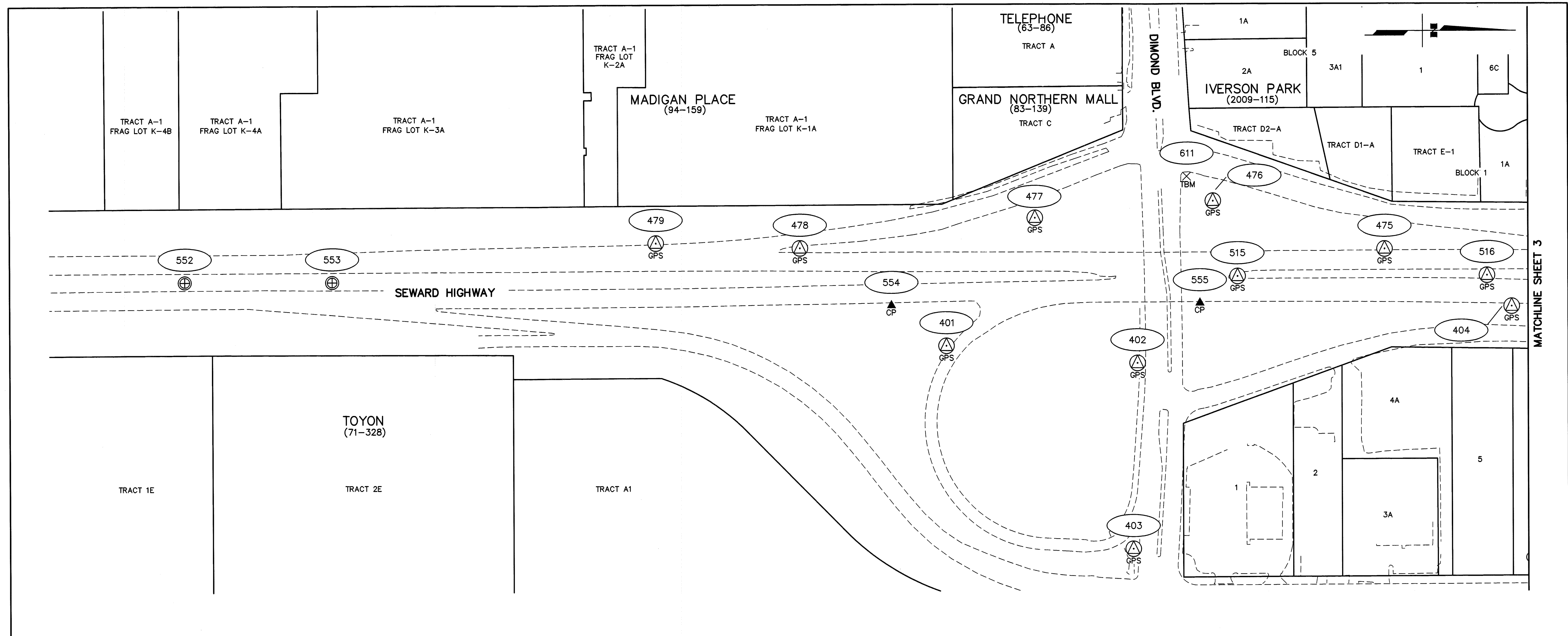
PRIMARY HORIZONTAL CONTROL POINTS			
POINT	NORTHING	EASTING	DESCRIPTION
78	321677.1137	349389.6348	Fd RBR/PC: DW-0 (REC)
229	332201.4758	349469.0494	Fd RBR/PC: TS FW-9 NLB/CORDOVA (REC)
551	305931.6264	353519.0395	Fd ROD/BD: OPOMSW/DOT#552 (REC)
702	313763.5509	354748.7389	Fd AM/BX[9232]: C 1/4 S8 *T12N R3W/DOT#751 (REC)
703	319034.4899	352084.1202	Fd AC/BX: 1/4 S6[S5 *T12N R3W/DOT#696 (REC)
704	316395.5519	352097.0375	Fd BC/BX: SEC 6[S5/7]8 *T12N R3W/DOT#1825 (REC)
705	321670.7496	351383.6986	Fd AC/BX[DOWL 6714-S]: S31[S32*T13NR3W 2006/DOT#682 (REC)
708	319041.8316	354724.5332	Fd RBR: C 1/4 S5 *T12N R3W/DOT#734 (REC)
717	311150.1470	351912.4348	Fd RBR/AC[4469-S]: 501/Mull#501 (REC)
718	310610.6147	355042.5026	Fd RBR/AC[4469-S]: 504/Mull#504 (REC)
890	307886.4254	352163.5487	Fd RBR/PC: TS OSH-5A (REC)
963	320393.4343	357288.0792	Fd RBR/PC: TS LOP-7 (REC)
972	333906.1746	356635.1730	Fd BC: TS LOP-16 (REC)



STATE OF ALASKA
DEPARTMENT OF TRANSPORTATION
&
PUBLIC FACILITIES
SURVEY CONTROL DIAGRAM
Record Of Survey
AKSAS 52503

SEWARD HIGHWAY, DIMOND TO 36TH AVENUE
WITHIN SEC 5 & 8, T12N, R3W & SEC 29 & 32 T13N, R3W, S.M.

DRAWN	BS	DATE	03/01/10	SCALE	1"=1000'
CHECKED	JMG	DATE	03/01/10	SHEET	1 OF 8



MATCHLINE SHEET 3

VERTICAL CONTROL POINTS				
POINT	NORTHING	EASTING	ELEVATION	DESCRIPTION
555	313845	353495	147.47'	Fd ROD/AC: SW-3 OPDMSW/DOT#3 (REC)
611	313819	353236	132.25'	TBM SEW2-39"B": Top NE Bolt on Plate Flange At Base of Signal and Lightpole @ E Side SB Offramp / N Side Dimond


PRIMARY HORIZONTAL CONTROL POINTS			
POINT	NORTHING	EASTING	DESCRIPTION
552	311768.3320	353447.9018	Fd BC/BX[HWY]: C/L NSH PI 366+39 /DOT#1172 (REC)
553	312070.0077	353448.3438	Fd BC/BX[HWY]: C/L NSH PI 369+40 /DOT#1173 (REC)
554	313214.3587	353499.0252	Fd Rbr/AC[4469-S]: 503/Mull
555	313845.2755	353495.0595	Fd ROD/AC: SW-3 OPDMSW /DOT#3 (REC)

SECONDARY HORIZONTAL CONTROL POINTS			
POINT	NORTHING	EASTING	DESCRIPTION
401	313326.6743	353582.0147	Set 5/8 Rbr/RPC[USKH]: CONTROL
402	313717.4063	353617.5617	Set 5/8 Rbr/RPC[USKH]: CONTROL
403	313708.2265	353997.5582	Set 5/8 Rbr/RPC[USKH]: CONTROL
404	314482.9461	353502.4005	Set 5/8 Rbr/RPC[USKH]: CONTROL
475	314223.2643	353384.9299	Set 5/8 Rbr/RPC[USKH]: CONTROL
476	313872.3007	353286.2984	Set 5/8 Rbr/RPC[USKH]: CONTROL
477	313508.3317	353320.2656	Set 5/8 Rbr/RPC[USKH]: CONTROL
478	313027.4334	353381.2772	Set 5/8 Rbr/RPC[USKH]: CONTROL
479	312732.4648	353370.4222	Set 5/8 Rbr/RPC[USKH]: CONTROL
515	313922.3948	353440.2669	Set 5/8 Rbr/RPC[USKH]: CONTROL
516	314432.6176	353438.8884	Set 5/8 Rbr/RPC[USKH]: CONTROL



U.S. SURVEY FEET

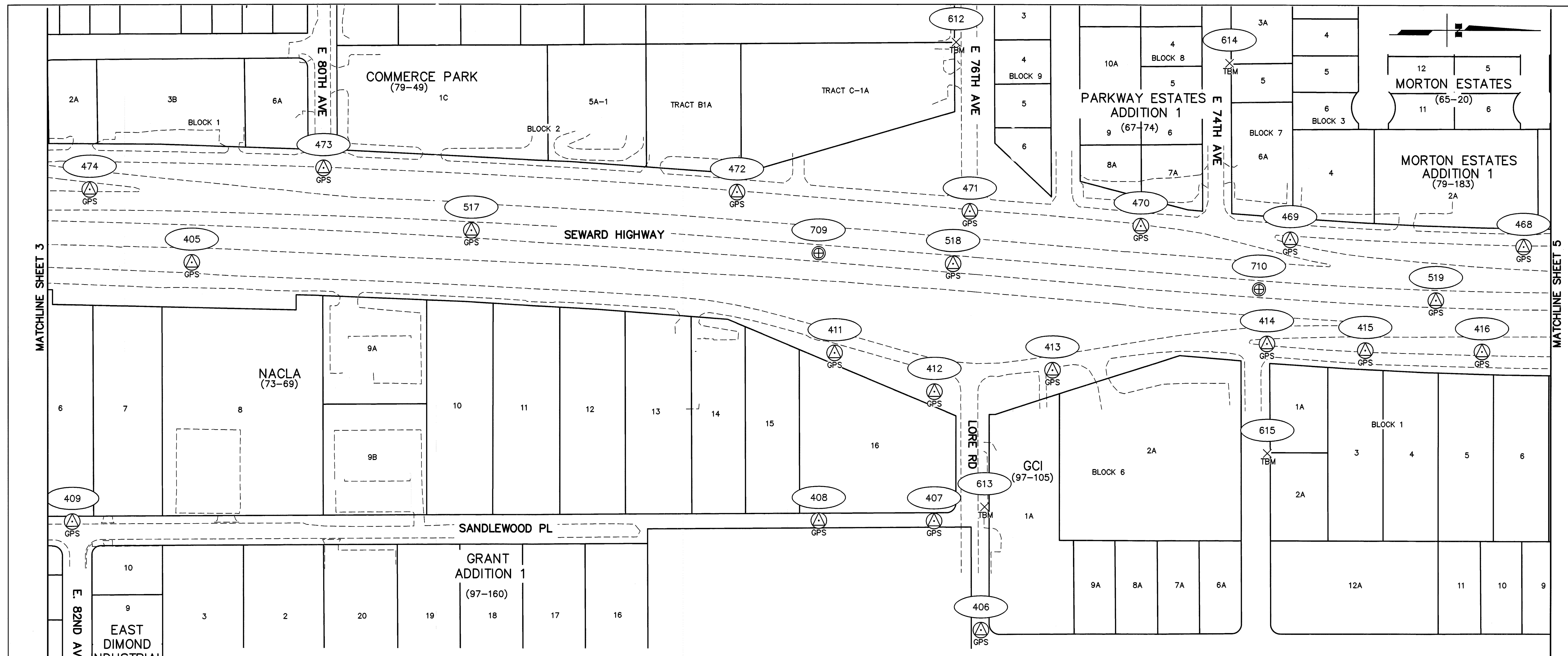
Anchorage Recording District
State Business - No Fee
This survey does not constitute a subdivision
as defined by AS 40.15.900(5)



STATE OF ALASKA
DEPARTMENT OF TRANSPORTATION
&
PUBLIC FACILITIES
SURVEY CONTROL DIAGRAM
Record Of Survey
AKSAS 52503
SEWARD HIGHWAY, DIMOND TO 36TH AVENUE
WITHIN SEC 5 & 8, T12N, R3W & SEC 29 & 32 T13N, R3W, S.M.

DRAWN	BS	DATE	03/01/10	SCALE	1"=100'
CHECKED	JMG	DATE	03/01/10	SHEET	2 OF 8

Anchorage Recording District Plat No. 2013-109

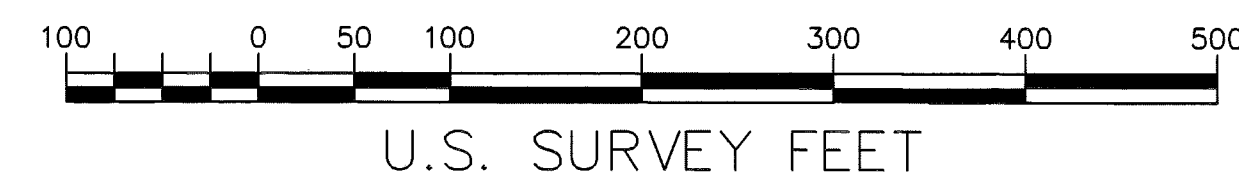


VERTICAL CONTROL POINTS				
POINT	NORTHING	EASTING	ELEVATION	DESCRIPTION
612	316372	353085	109.65'	TBM NEW SEW-2 34B: NNW Bolt Top Flange FH, S Side 76th Ave 300'± W of Homer Dr.
613	316430	354034	126.05'	TBM NEW SEW-2 35A: NNW Bolt Top Flange FH, N Side Lore Rd 280'± E of Brayton Dr.
614	316930	353127	108.26'	TBM NEW SEW-2 34A: NNW Bolt Top Flange FH, N Side 74th Ave 300'± W of Homer Dr.
615	317007	353924	120.21'	TBM NEW SEW-2 35B: NNE Bolt Top Flange FH, N Side 74th Ave 210'± E of Brayton Dr.

PRIMARY HORIZONTAL CONTROL POINTS			
POINT	NORTHING	EASTING	DESCRIPTION
709	316091.0992	353515.7462	Fd BC[HWY]: C/L NSH PT 409+59.75/DOT#1175 (REC)
710	316989.8069	353588.7839	Fd BC[HWY]: C/L NSH PC 418+65.97/DOT#1176 (REC)

SECONDARY HORIZONTAL CONTROL POINTS			
POINT	NORTHING	EASTING	DESCRIPTION
405	314810.9084	353534.1982	Set 5/8 Rbr/RPC[USKH]: CONTROL
406	316422.6382	354285.2618	Set 5/8 Rbr/RPC[USKH]: CONTROL
407	316326.8755	354063.0028	Set 5/8 Rbr/RPC[USKH]: CONTROL

SECONDARY HORIZONTAL CONTROL POINTS (CONTINUED)			
POINT	NORTHING	EASTING	DESCRIPTION
408	316091.5765	354061.9090	Set 5/8 Rbr/RPC[USKH]: CONTROL
409	314566.3766	354063.8440	Set 5/8 Rbr/RPC[USKH]: CONTROL
410	314594.0765	354771.4723	Set 5/8 Rbr/RPC[USKH]: CONTROL
411	316123.7436	353719.6282	Set 5/8 Rbr/RPC[USKH]: CONTROL
412	316327.4391	353798.6712	Set 5/8 Rbr/RPC[USKH]: CONTROL
413	316568.5892	353754.5485	Set 5/8 Rbr/RPC[USKH]: CONTROL
414	317006.1777	353700.4872	Set 5/8 Rbr/RPC[USKH]: CONTROL
415	317207.0207	353713.8218	Set 5/8 Rbr/RPC[USKH]: CONTROL
416	317445.1863	353716.1438	Set 5/8 Rbr/RPC[USKH]: CONTROL
468	317530.1530	353501.5793	Set 5/8 Rbr/RPC[USKH]: CONTROL
469	317053.5267	353487.6578	Set 5/8 Rbr/RPC[USKH]: CONTROL
470	316748.8188	353459.5577	Set 5/8 Rbr/RPC[USKH]: CONTROL
471	316399.7781	353430.3106	Set 5/8 Rbr/RPC[USKH]: CONTROL
472	315924.4463	353391.2192	Set 5/8 Rbr/RPC[USKH]: CONTROL
473	315080.0595	353341.7058	Set 5/8 Rbr/RPC[USKH]: CONTROL
474	314602.3884	353384.8993	Set 5/8 Rbr/RPC[USKH]: CONTROL
517	315382.0514	353469.0248	Set 5/8 Rbr/RPC[USKH]: CONTROL
518	316365.5798	353537.4224	Set 5/8 Rbr/RPC[USKH]: CONTROL
519	317351.0611	353611.5100	Set 5/8 Rbr/RPC[USKH]: CONTROL



Anchorage Recording District
State Business - No Fee
This survey does not constitute a subdivision
as defined by AS 40.15.900(5)

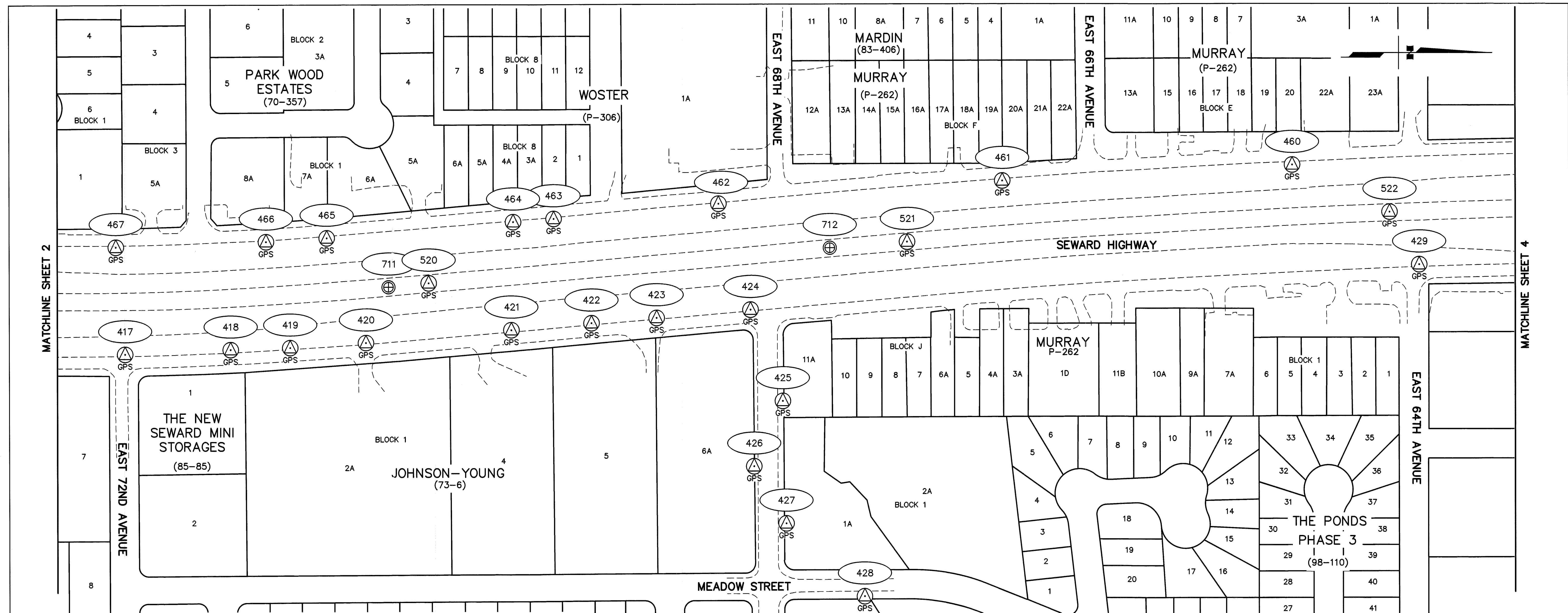


STATE OF ALASKA
DEPARTMENT OF TRANSPORTATION
&
PUBLIC FACILITIES
SURVEY CONTROL DIAGRAM
Record Of Survey
AKSAS 52503

SEWARD HIGHWAY, DIMOND TO 36TH AVENUE
WITHIN SEC 5 & 8, T12N, R3W & SEC 29 & 32 T13N, R3W, S.M.

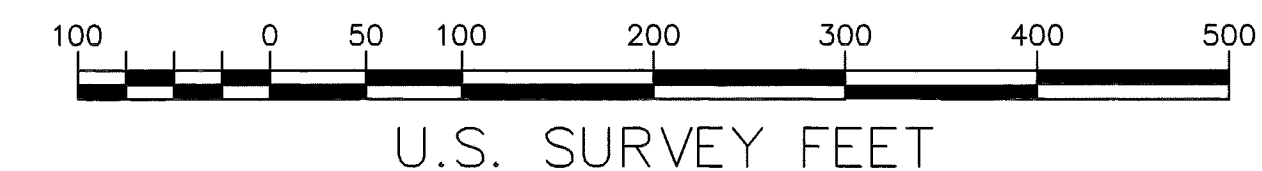
DRAWN	BS	DATE	03/01/10	SCALE	1"=100'
CHECKED	JMG	DATE	03/01/10	SHEET	3 OF 8

Anchorage Recording District Plat No. 2013-109



PRIMARY HORIZONTAL CONTROL POINTS			
POINT	NORTHING	EASTING	DESCRIPTION
711	318264.1484	353584.3422	Fd BC[HWY]: C/L NSH PT 431 +46.38/DOT#1177 (REC)
712	319166.5795	353505.6837	Fd BC[HWY]: C/L NSH PC 440+52.60/DOT#1178 (REC)

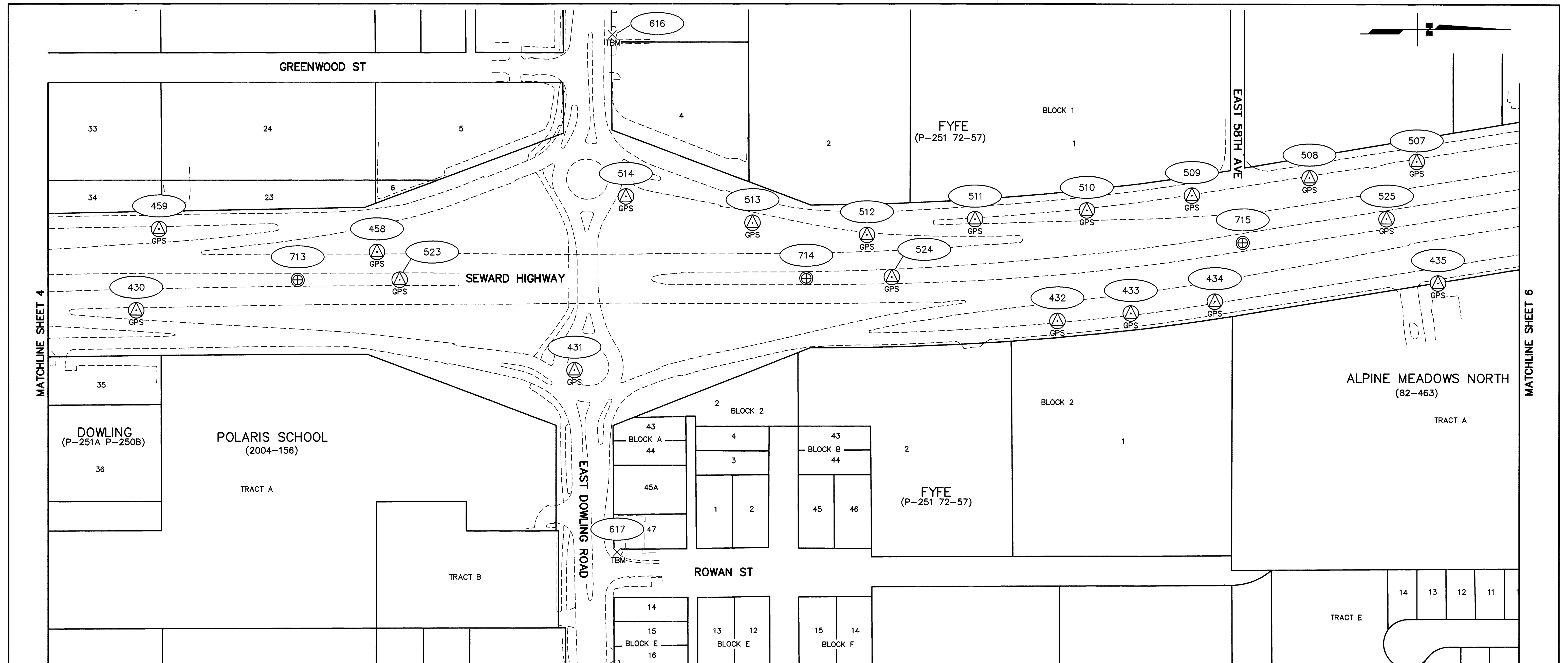
SECONDARY HORIZONTAL CONTROL POINTS			
POINT	NORTHING	EASTING	DESCRIPTION
417	317725.4986	353721.2210	Set 5/8 Rbr/RPC[USKH]: CONTROL
418	317941.2501	353712.1094	Set 5/8 Rbr/RPC[USKH]: CONTROL
419	318062.9599	353708.2900	Set 5/8 Rbr/RPC[USKH]: CONTROL
420	318217.8639	353698.2421	Set 5/8 Rbr/RPC[USKH]: CONTROL
421	318515.2165	353672.1935	Set 5/8 Rbr/RPC[USKH]: CONTROL
422	318679.0979	353658.4566	Set 5/8 Rbr/RPC[USKH]: CONTROL
423	318812.2457	353648.0059	Set 5/8 Rbr/RPC[USKH]: CONTROL
424	319004.1963	353631.4117	Set 5/8 Rbr/RPC[USKH]: CONTROL
425	319070.0435	353818.3102	Set 5/8 Rbr/RPC[USKH]: CONTROL
426	319011.3035	353951.4492	Set 5/8 Rbr/RPC[USKH]: CONTROL
427	319077.0570	354067.9741	Set 5/8 Rbr/RPC[USKH]: CONTROL
428	319237.2746	354217.4026	Set 5/8 Rbr/RPC[USKH]: CONTROL
429	320371.1469	353540.1965	Set 5/8 Rbr/RPC[USKH]: CONTROL
460	320111.4800	353336.7526	Set 5/8 Rbr/RPC[USKH]: CONTROL
461	319519.2120	353369.0743	Set 5/8 Rbr/RPC[USKH]: CONTROL
462	318938.9611	353415.3641	Set 5/8 Rbr/RPC[USKH]: CONTROL
463	318601.9666	353445.4861	Set 5/8 Rbr/RPC[USKH]: CONTROL
464	318519.1679	353451.7783	Set 5/8 Rbr/RPC[USKH]: CONTROL
465	318137.9731	353484.5121	Set 5/8 Rbr/RPC[USKH]: CONTROL
466	318013.7237	353492.0501	Set 5/8 Rbr/RPC[USKH]: CONTROL
467	317706.7601	353502.6314	Set 5/8 Rbr/RPC[USKH]: CONTROL
520	318346.3615	353576.4023	Set 5/8 Rbr/RPC[USKH]: CONTROL
521	319324.4111	353493.6639	Set 5/8 Rbr/RPC[USKH]: CONTROL
522	320310.6067	353433.0462	Set 5/8 Rbr/RPC[USKH]: CONTROL



Anchorage Recording District
State Business - No Fee
This survey does not constitute a subdivision
as defined by AS 40.15.900(5)

STATE OF ALASKA
DEPARTMENT OF TRANSPORTATION
&
PUBLIC FACILITIES
SURVEY CONTROL DIAGRAM
Record Of Survey
AKSAS 52503
SEWARD HIGHWAY, DIMOND TO 36TH AVENUE
WITHIN SEC 5 & 8, T12N, R3W & SEC 29 & 32 T13N, R3W, S.M.

DRAWN	BS	DATE	03/01/10	SCALE	1"=100'
CHECKED	JMG	DATE	03/01/10	SHEET	4 OF 8



VERTICAL CONTROL POINTS

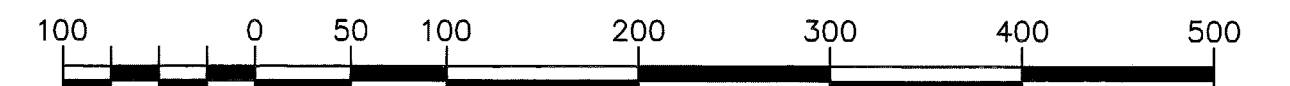
POINT	NORTHING	EASTING	ELEVATION	DESCRIPTION
616	321727	352916	128.85'	TBM SEW2-38"B": Top S Bolt on Flange At Fire Hydrant on North Side of Dowling across from Greenwood Street/ W Side New Seward Hwy.
617	321738	353979	140.78'	TBM SEW2-38"A": Top S Bolt on Flange At Fire Hydrant at Northwest Corner of Intersection of Dowling and Rowan Street/ E Side New Seward Hwy.

PRIMARY HORIZONTAL CONTROL POINTS

POINT	NORTHING	EASTING	DESCRIPTION
713	321080.4431	353419.9026	Fd BC[HWY]: C/L NSH PT 459+73.22 EQ/DO#1179 (REC)
714	322126.5799	353416.7022	Fd BC[HWY]: C/L NSH PC 469+94.29/DO#1180 (REC)
715	323023.8327	353343.3186	Fd BC[HWY]: 478+94.53/DO#1181 (REC)

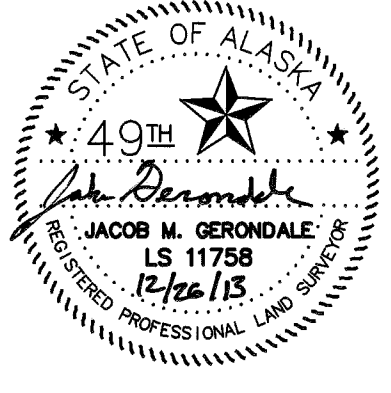
SECONDARY HORIZONTAL CONTROL POINTS

POINT	NORTHING	EASTING	DESCRIPTION
430	320748.2691	353482.2997	Set 5/8 Rbr/RPC[USKH]: CONTROL
431	321649.7413	353605.3918	Set 5/8 Rbr/RPC[USKH]: CONTROL
432	322643.0370	353503.9916	Set 5/8 Rbr/RPC[USKH]: CONTROL
433	322793.7880	353488.1891	Set 5/8 Rbr/RPC[USKH]: CONTROL
434	322966.4026	353464.0449	Set 5/8 Rbr/RPC[USKH]: CONTROL
435	323425.2415	353425.8524	Set 5/8 Rbr/RPC[USKH]: CONTROL
458	321243.5440	353362.4279	Set 5/8 Rbr/RPC[USKH]: CONTROL
459	320795.1361	353315.1334	Set 5/8 Rbr/RPC[USKH]: CONTROL
507	323381.5216	353176.0006	Set 5/8 Rbr/RPC[USKH]: CONTROL
508	323161.0813	353209.8725	Set 5/8 Rbr/RPC[USKH]: CONTROL
509	322919.2129	353246.0898	Set 5/8 Rbr/RPC[USKH]: CONTROL
510	322703.4166	353276.8545	Set 5/8 Rbr/RPC[USKH]: CONTROL
511	322473.5741	353295.1122	Set 5/8 Rbr/RPC[USKH]: CONTROL
512	322251.4488	353327.5186	Set 5/8 Rbr/RPC[USKH]: CONTROL
513	322016.0109	353302.4926	Set 5/8 Rbr/RPC[USKH]: CONTROL
514	321755.5250	353248.5032	Set 5/8 Rbr/RPC[USKH]: CONTROL
523	321290.3604	353419.5290	Set 5/8 Rbr/RPC[USKH]: CONTROL
524	322302.3856	353414.1383	Set 5/8 Rbr/RPC[USKH]: CONTROL
525	323319.4298	353294.0285	Set 5/8 Rbr/RPC[USKH]: CONTROL



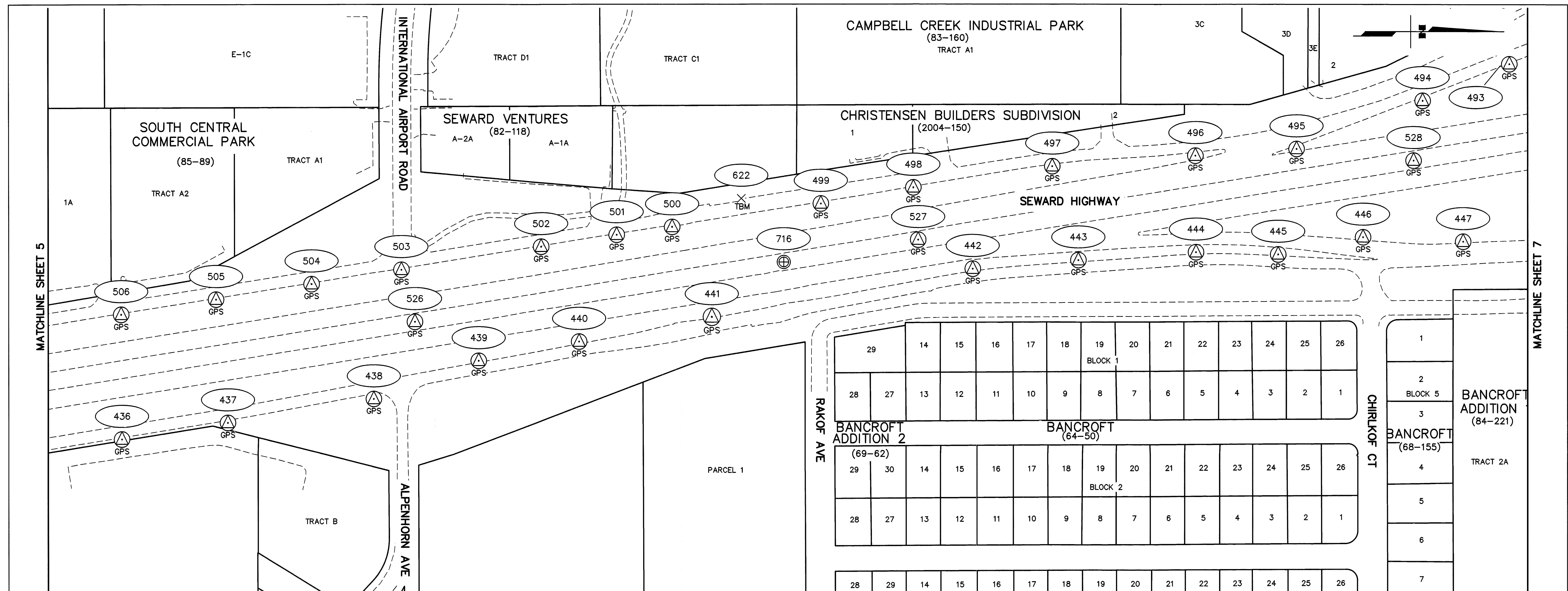
U.S. SURVEY FEET

Anchorage Recording District
State Business - No Fee
This survey does not constitute a subdivision
as defined by AS 40.15.900(5)



STATE OF ALASKA
DEPARTMENT OF TRANSPORTATION
&
PUBLIC FACILITIES
SURVEY CONTROL DIAGRAM
Record Of Survey
AKSAS 52503
SEWARD HIGHWAY, DIMOND TO 36TH AVENUE
WITHIN SEC 5 & 8, T12N, R3W & SEC 29 & 32 T13N, R3W, S.M.

DRAWN	JDE	DATE	03/01/10	SCALE	1"=100'
CHECKED	JMG	DATE	03/01/10	SHEET	5 OF 8

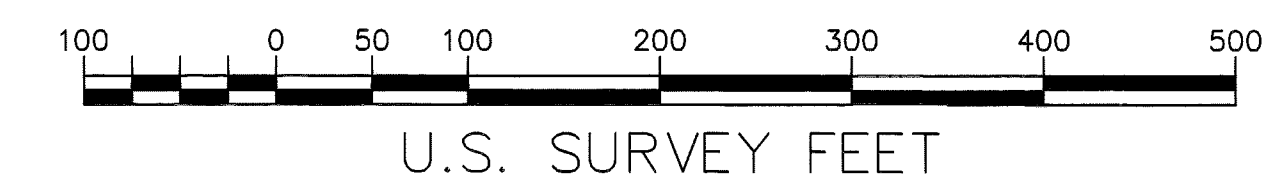


VERTICAL CONTROL POINTS				
POINT	NORTHING	EASTING	ELEVATION	DESCRIPTION
622	325010	352878	124.93'	TBM SEW2-40: Set "X" on Top NW Bolt on Guard Rail Post on NW Corner Bridge over Campbell Creek on Homer Drive/ W Side New Seward Hwy.

PRIMARY HORIZONTAL CONTROL POINTS			
POINT	NORTHING	EASTING	DESCRIPTION
716	325096.7955	353007.9930	Fd BC[HWY]: C/L NSH POT 500+00/DO#1182 (REC)

SECONDARY HORIZONTAL CONTROL POINTS			
POINT	NORTHING	EASTING	DESCRIPTION
436	323743.1377	353370.0168	Set 5/8 Rbr/RPC[USKH]: CONTROL
437	323959.8249	353336.3181	Set 5/8 Rbr/RPC[USKH]: CONTROL
438	324258.2670	353287.3970	Set 5/8 Rbr/RPC[USKH]: CONTROL
439	324472.8082	353209.3043	Set 5/8 Rbr/RPC[USKH]: CONTROL
440	324678.1187	353170.1300	Set 5/8 Rbr/RPC[USKH]: CONTROL
441	324949.5647	353119.9070	Set 5/8 Rbr/RPC[USKH]: CONTROL
442	325483.2787	353022.0311	Set 5/8 Rbr/RPC[USKH]: CONTROL
443	325699.2361	353004.4333	Set 5/8 Rbr/RPC[USKH]: CONTROL

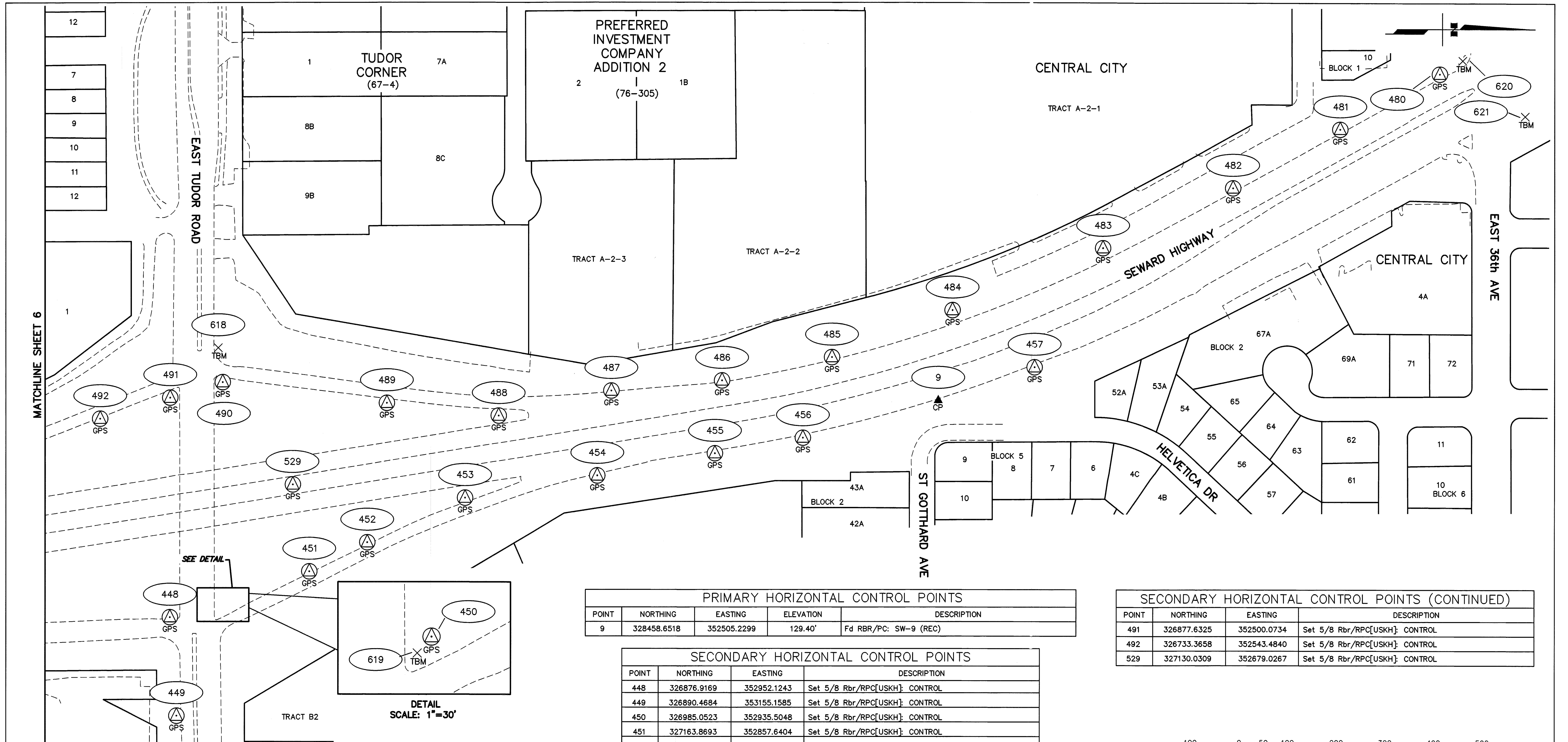
SECONDARY HORIZONTAL CONTROL POINTS (CONTINUED)			
POINT	NORTHING	EASTING	DESCRIPTION
444	325939.4818	352988.0966	Set 5/8 Rbr/RPC[USKH]: CONTROL
445	326107.6034	352992.7231	Set 5/8 Rbr/RPC[USKH]: CONTROL
446	326281.2847	352957.5947	Set 5/8 Rbr/RPC[USKH]: CONTROL
447	326485.8532	352966.5903	Set 5/8 Rbr/RPC[USKH]: CONTROL
493	326580.4002	352603.1874	Set 5/8 Rbr/RPC[USKH]: CONTROL
494	326403.1458	352678.0121	Set 5/8 Rbr/RPC[USKH]: CONTROL
495	326145.2141	352776.8225	Set 5/8 Rbr/RPC[USKH]: CONTROL
496	325938.4537	352790.5143	Set 5/8 Rbr/RPC[USKH]: CONTROL
497	325645.9947	352812.2660	Set 5/8 Rbr/RPC[USKH]: CONTROL
498	325361.8792	352855.6728	Set 5/8 Rbr/RPC[USKH]: CONTROL
499	325172.7516	352888.3596	Set 5/8 Rbr/RPC[USKH]: CONTROL
500	324868.5468	352936.0948	Set 5/8 Rbr/RPC[USKH]: CONTROL
501	324755.1795	352952.2060	Set 5/8 Rbr/RPC[USKH]: CONTROL
502	324600.6899	352976.1202	Set 5/8 Rbr/RPC[USKH]: CONTROL
503	324314.9660	353023.3101	Set 5/8 Rbr/RPC[USKH]: CONTROL
504	324131.0325	353052.4509	Set 5/8 Rbr/RPC[USKH]: CONTROL
505	323935.6331	353083.9948	Set 5/8 Rbr/RPC[USKH]: CONTROL
506	323741.6632	353114.8083	Set 5/8 Rbr/RPC[USKH]: CONTROL
526	324342.5153	353129.5840	Set 5/8 Rbr/RPC[USKH]: CONTROL
527	325371.6663	352962.8450	Set 5/8 Rbr/RPC[USKH]: CONTROL
528	326384.6058	352800.5123	Set 5/8 Rbr/RPC[USKH]: CONTROL



Anchorage Recording District
State Business - No Fee
This survey does not constitute a subdivision
as defined by AS 40.15.900(5)

	STATE OF ALASKA DEPARTMENT OF TRANSPORTATION & PUBLIC FACILITIES SURVEY CONTROL DIAGRAM Record Of Survey AKSAS 52503 SEWARD HIGHWAY, DIMOND TO 36TH AVENUE WITHIN SEC 5 & 8, T12N, R3W & SEC 29 & 32 T13N, R3W, S.M.		
	DRAWN	BS	DATE 03/01/10
	CHECKED	JMG	DATE 03/01/10
	SCALE 1"=100'		SHEET 6 OF 8

Anchorage Recording District Plat No. 2013-109



MATCHLINE SHEET 6

EAST TUDOR ROAD

CENTRAL CITY

TRACT A-2-1

TRACT A-2-3

TRACT A-2-2

SEWARD HIGHWAY

CENTRAL CITY

EAST 36th AVE

ST GOTTARD AVE

HELVETICA DR

SEE DETAIL

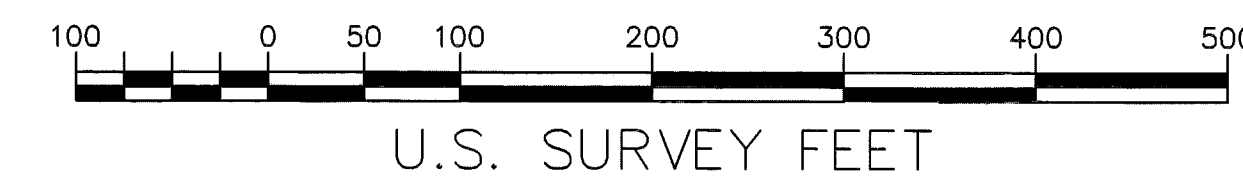
DETAIL
SCALE: 1"=30'

TRACT B2

PRIMARY HORIZONTAL CONTROL POINTS				
POINT	NORTHING	EASTING	ELEVATION	DESCRIPTION
9	328458.6518	352505.2299	129.40'	Fd RBR/PC: SW-9 (REC)

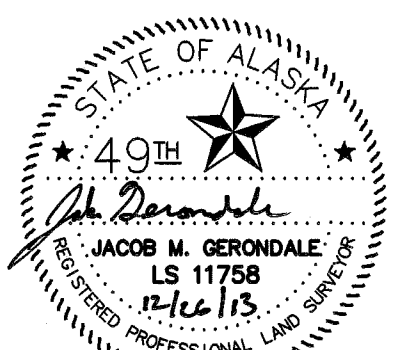
SECONDARY HORIZONTAL CONTROL POINTS				
POINT	NORTHING	EASTING	DESCRIPTION	
448	326876.9169	352952.1243	Set 5/8 Rbr/RPC[USKH]: CONTROL	
449	326890.4684	353155.1585	Set 5/8 Rbr/RPC[USKH]: CONTROL	
450	326985.0523	352935.5048	Set 5/8 Rbr/RPC[USKH]: CONTROL	
451	327163.8693	352857.6404	Set 5/8 Rbr/RPC[USKH]: CONTROL	
452	327283.3607	352797.8494	Set 5/8 Rbr/RPC[USKH]: CONTROL	
453	327484.7547	352705.9638	Set 5/8 Rbr/RPC[USKH]: CONTROL	
454	327756.9517	352660.2975	Set 5/8 Rbr/RPC[USKH]: CONTROL	
455	327999.0886	352614.4617	Set 5/8 Rbr/RPC[USKH]: CONTROL	
456	328180.1151	352582.1630	Set 5/8 Rbr/RPC[USKH]: CONTROL	
457	328656.9761	352436.9296	Set 5/8 Rbr/RPC[USKH]: CONTROL	
480	329490.4960	351832.7387	Set 5/8 Rbr/RPC[USKH]: CONTROL	
481	329285.6221	351946.8947	Set 5/8 Rbr/RPC[USKH]: CONTROL	
482	329065.1578	352067.7262	Set 5/8 Rbr/RPC[USKH]: CONTROL	
483	328797.7936	352191.4663	Set 5/8 Rbr/RPC[USKH]: CONTROL	
484	328488.1104	352319.5122	Set 5/8 Rbr/RPC[USKH]: CONTROL	
485	328239.9907	352416.3371	Set 5/8 Rbr/RPC[USKH]: CONTROL	
486	328013.6834	352464.2256	Set 5/8 Rbr/RPC[USKH]: CONTROL	
487	327785.8553	352485.1887	Set 5/8 Rbr/RPC[USKH]: CONTROL	
488	327553.9593	352536.5217	Set 5/8 Rbr/RPC[USKH]: CONTROL	
489	327323.7162	352510.6977	Set 5/8 Rbr/RPC[USKH]: CONTROL	
490	326985.7207	352468.1508	Set 5/8 Rbr/RPC[USKH]: CONTROL	

SECONDARY HORIZONTAL CONTROL POINTS (CONTINUED)				
POINT	NORTHING	EASTING	DESCRIPTION	
491	326877.6325	352500.0734	Set 5/8 Rbr/RPC[USKH]: CONTROL	
492	326733.3658	352543.4840	Set 5/8 Rbr/RPC[USKH]: CONTROL	
529	327130.0309	352679.0267	Set 5/8 Rbr/RPC[USKH]: CONTROL	



Anchorage Recording District
State Business - No Fee
This survey does not constitute a subdivision
as defined by AS 40.15.900(5)

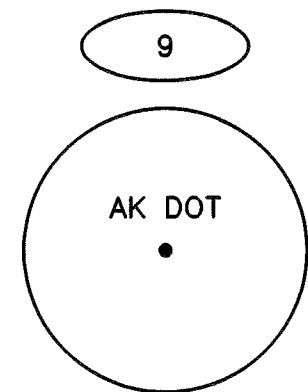
VERTICAL CONTROL POINTS				
POINT	NORTHING	EASTING	ELEVATION	DESCRIPTION
618	326977	352398	138.33'	TBM SEW2-40"B": Chisled "X" on Top SE Bolt on Light Pole at Intersection of Tudor Access Ramp and Tudor Road/ W Side New Seward Hwy.
619	326976	352945	137.33'	TBM SEW2-40"A": Chisled "X" on Top SW Bolt on Signal Pole at Intersection of Tudor Access Ramp and Tudor Road/ E Side New Seward Hwy.
620	329538	351805	111.97'	TBM SEW2-42"B": Chisled "X" on Top NE Bolt on Signal Pole at Southwest Corner of Intersection of 36th and New Seward Hwy.
621	329666	351919	111.97'	TBM SEW2-42"A": Chisled "X" on Top SW Bolt on Signal Pole at Northeast Corner of Intersection of 36th and New Seward Hwy.



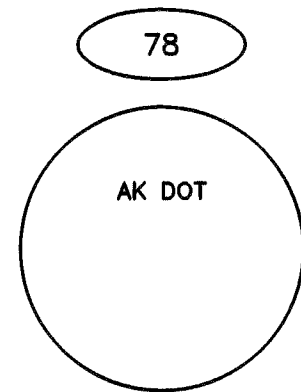
STATE OF ALASKA
DEPARTMENT OF TRANSPORTATION
&
PUBLIC FACILITIES
SURVEY CONTROL DIAGRAM
Record Of Survey
AKSAS 52503
SEWARD HIGHWAY, DIMOND TO 36TH AVENUE
WITHIN SEC 5 & 8, T12N, R3W & SEC 29 & 32 T13N, R3W, S.M.

DRAWN	BS	DATE	03/01/10	SCALE	1"=100'
CHECKED	JMG	DATE	03/01/10	SHEET	7 OF 8

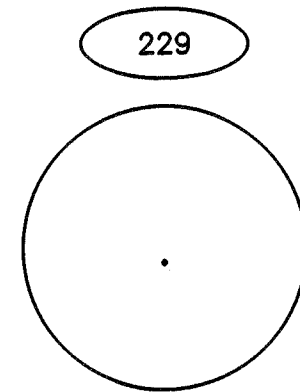
Anchorage Recording District Plat No. 2013-109



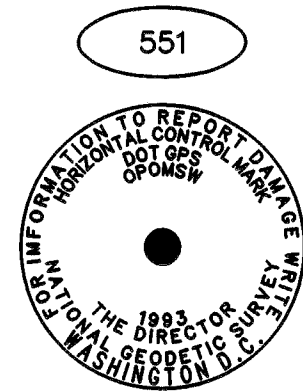
Fnd 1-1/4" YPC; Approx. 1' Below Ground; Good Condition



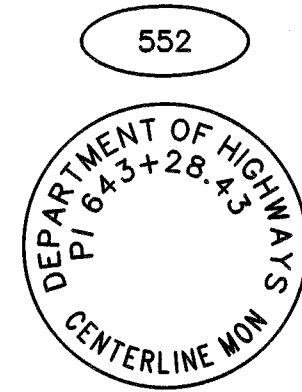
Fnd 1-1/4" YPC; 0.4' Below Ground



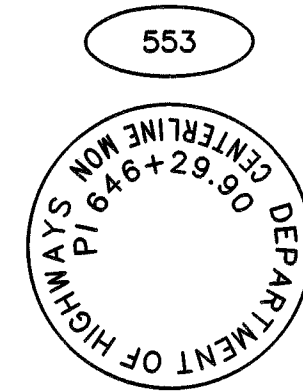
Fnd 1-1/4" Plastic Cap; Flush With Sidewalk



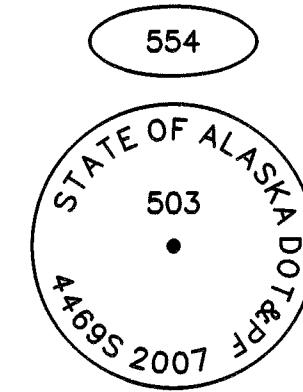
Fnd 3-3/4" BC With 5" High Stainless Steel Rod; Flush With Ground; Excellent Condition



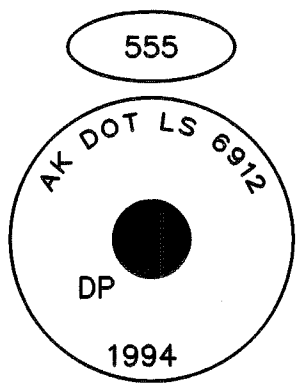
Fnd 2.5" BC in Mon. Case; 0.1' Below Ground; Good Condition



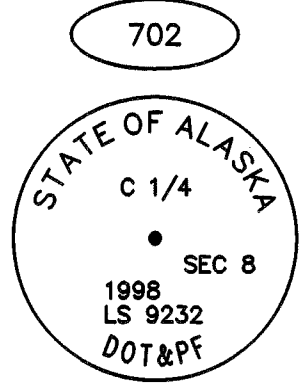
Fnd 2-1/2" BC in Mon Case; 0.5' Below Ground; Excellent Condition



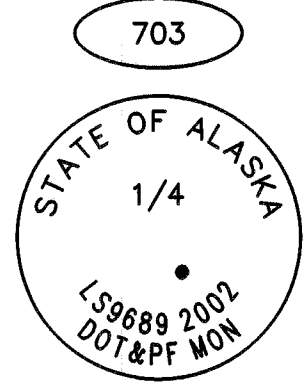
Fnd 2" Aluminum Cap; 0.3' Below Ground; Good Condition



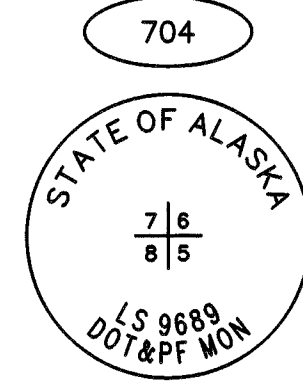
Fnd 2" Aluminum Cap; 0.3' Below Ground; with Nipple in Center; Good Condition



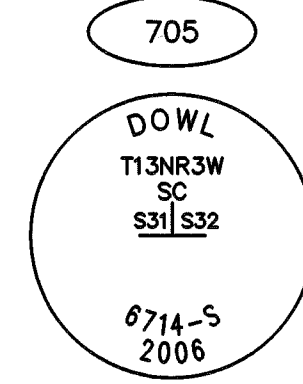
Fnd 2-1/2" Aluminum Cap in Mon. Case; 0.3' Below Pavement; Good Condition



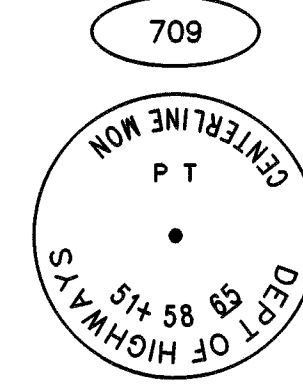
Fnd 2-1/2" Aluminum Cap in Mon Case; 0.3' Below Pavement; Good Condition



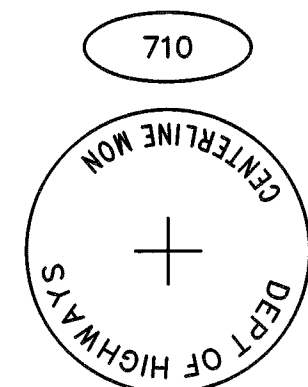
Fnd 2-1/2" Aluminum Cap in Mon Case; 0.3' Below Pavement; Fair Condition



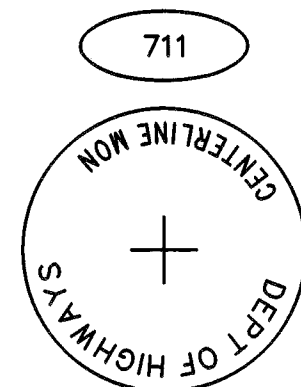
Fnd 3-1/4" Aluminum Cap in Mon Case; 0.3' Below Pavement; Good Condition



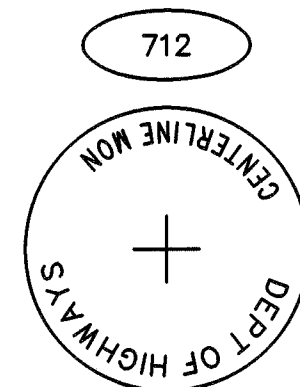
Fnd 2-1/2" BC; 0.7' Below Ground; Good Condition



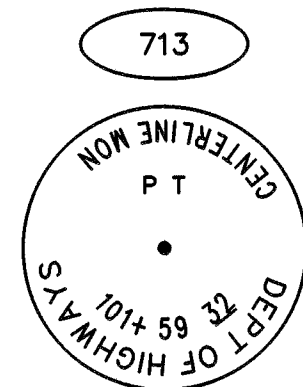
Fnd 2-1/2" BC; 2' Below Ground; Good Condition



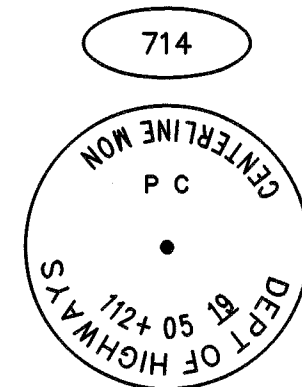
Fnd 2-1/2" BC; Flush With Ground; Good Condition



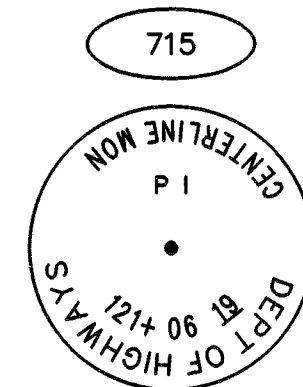
Fnd 2-1/2" BC; 0.2' Below Ground; Good Condition



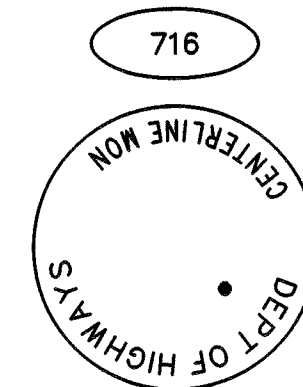
Fnd 2-1/2" BC; 0.4' Below Ground; Good Condition



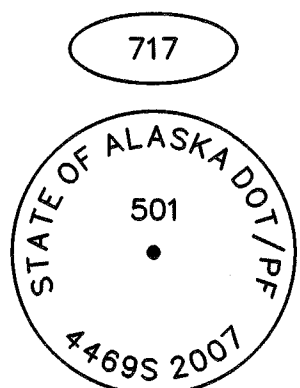
Fnd 2-1/2" BC; 0.7' Below Ground; Good Condition



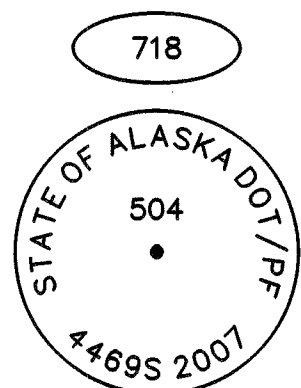
Fnd 2-1/2" BC; 0.4' Below Ground; Good Condition



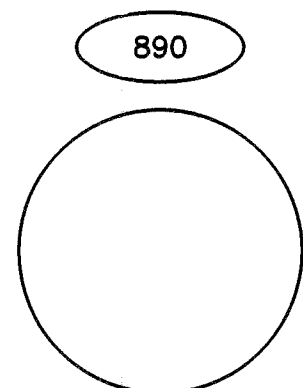
Fnd 2-1/2" BC; 0.8' Below Ground; Good Condition



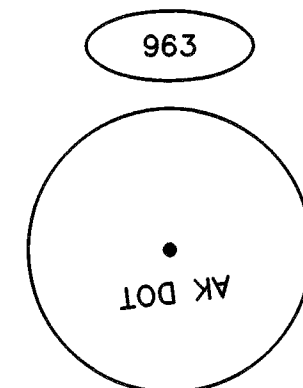
Fnd 2" Aluminum Cap; 0.2' Above Ground; Good Condition



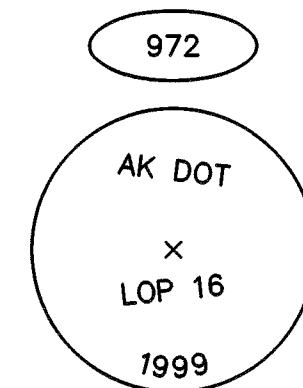
Fnd 2" Aluminum Cap; Flush With Ground; Good Condition



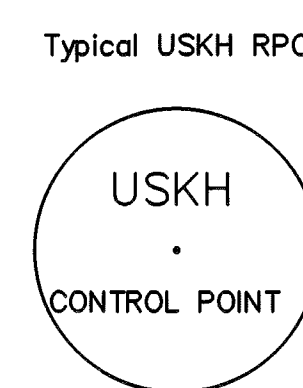
Fnd 1-1/4" YPC; Flush With Sidewalk; Poor Condition



Fnd 1-1/4" YPC; Flush With Pavement; Fair Condition



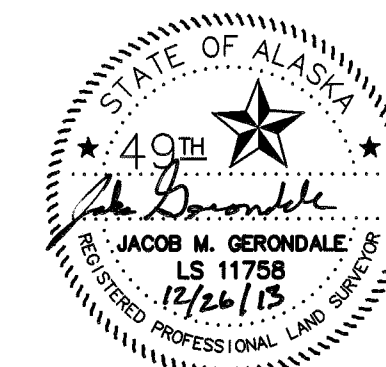
Fnd 2-1/2" BC; Flush With Pavement; Good Condition



Set 1-1/4" Red Plastic Cap; Flush with Ground

2013-109

Plat #	Anchorage
Rec Dist	
Date	12/30/2013
Time	9:31 AM



STATE OF ALASKA
DEPARTMENT OF TRANSPORTATION
&
PUBLIC FACILITIES
SURVEY CONTROL DIAGRAM
Record Of Survey
AKSAS 52503

SEWARD HIGHWAY, DIMOND TO 36TH AVENUE
WITHIN SEC 5 & 8, T12N, R3W & SEC 29 & 32 T13N, R3W, S.M.

DRAWN	BS	DATE	03/01/10	SCALE	N/A
CHECKED	JMG	DATE	03/01/10	SHEET	8 OF 8