

STATE OF ALASKA
DEPARTMENT OF TRANSPORTATION
&
PUBLIC FACILITIES

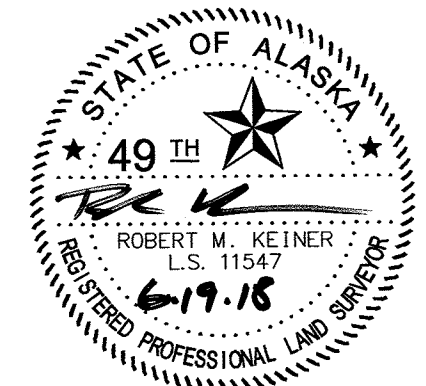
RIGHT OF WAY BASE MAP
ALASKA PROJECT
SEWARD HIGHWAY
RIGHT OF WAY STUDY MP 105-111
0A31 (051)
59765

PROJECT DESIGNATION	SHEET NO.	TOTAL SHEETS
0A31 (051)	R1	R20

DEPARTMENT LOCATIONS SURVEYOR'S CERTIFICATE
I HEREBY CERTIFY THAT I AM A PROFESSIONAL LAND SURVEYOR REGISTERED IN THE STATE OF ALASKA AND THAT ALL RIGHT-OF-WAY CENTERLINE MONUMENT LOCATIONS HAVE BEEN ESTABLISHED AS INDICATED ON THE RIGHT OF WAY PLANS. ALL EXISTING FOUND SUBDIVISION MONUMENTS, PROPERTY CORNERS AND SECTION LINE MONUMENTATION AS INDICATED ON THE RIGHT OF WAY PLANS HAVE BEEN REFERENCED TO PROJECT SURVEY CONTROLS BY ME OR UNDER MY SUPERVISION.

6/19/18
DATE
LS-11547
REGISTRATION NUMBER

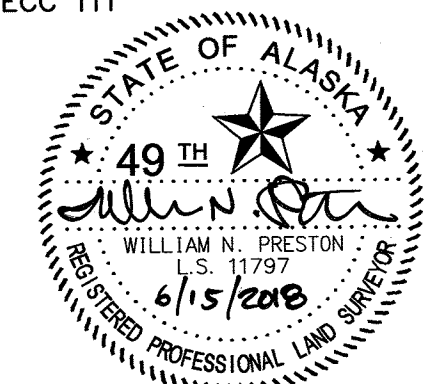
ROBERT M. KEINER
4111 AVIATION AVE.
ANCHORAGE, AK. 99502
(907)269-0556



CONSULTANT RIGHT OF WAY SURVEYOR'S CERTIFICATE
I HEREBY CERTIFY THAT I AM A PROFESSIONAL LAND SURVEYOR REGISTERED IN THE STATE OF ALASKA AND THAT THIS PLAT WAS MADE BY ME OR UNDER MY SUPERVISION. THIS PLAT WAS BASED UPON THE MONUMENTS RECOVERED DURING THE DEPARTMENT'S LOCATIONS SURVEY FOR THIS PROJECT.

6/15/2018
DATE
LS 11797
REGISTRATION NUMBER

WILLIAM N. PRESTON
R&M CONSULTANTS, INC.
CERTIFICATE OF AUTHORIZATION NO. AECC 111
9101 VANGUARD DRIVE
ANCHORAGE, AK. 99507
(907)522-1707



DEPARTMENT OF
TRANSPORTATION & PUBLIC FACILITIES

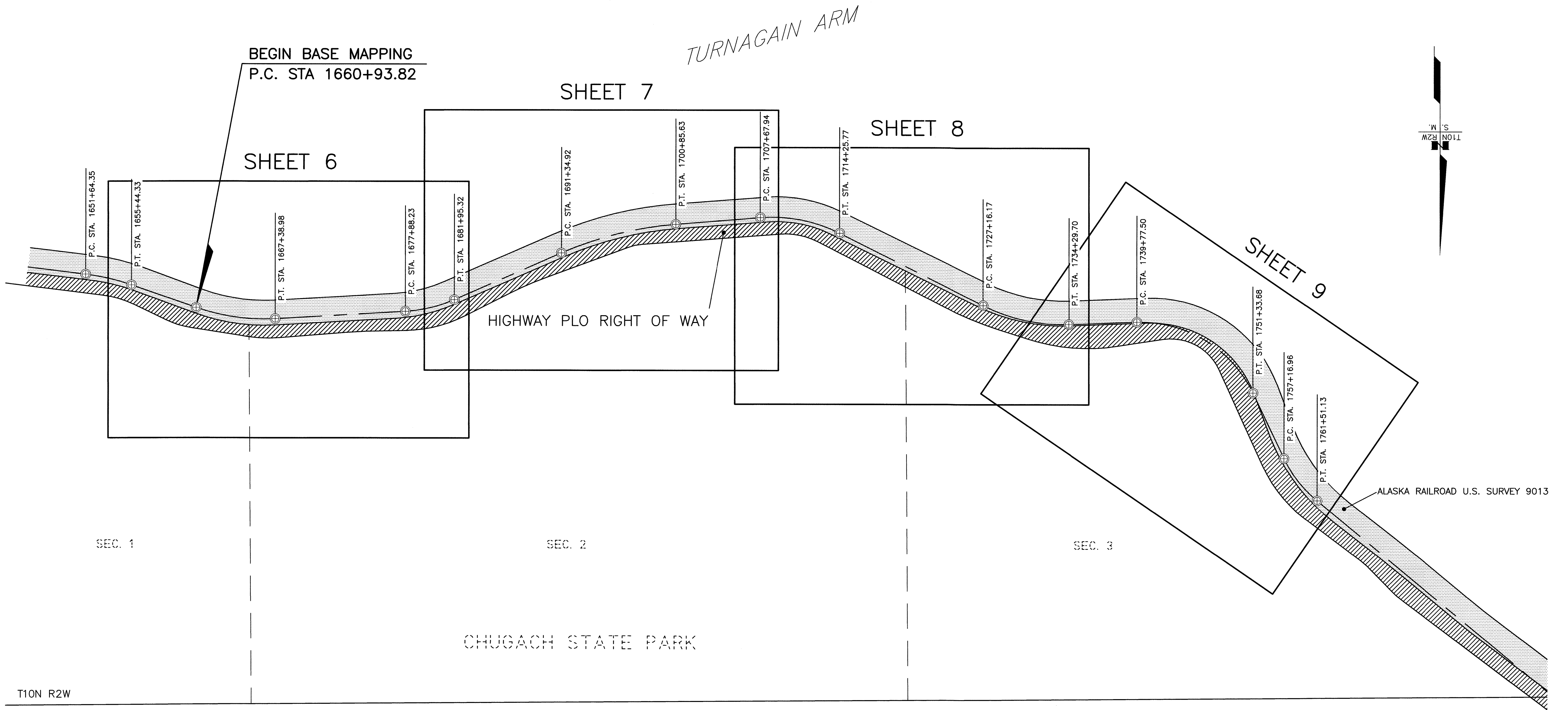
APPROVED June 20, 2018
Date

REGIONAL CHIEF R/W AGENT

THIS SURVEY DOES NOT CONSTITUTE A
SUBDIVISION AS DEFINED BY A.S. 40.15.900(5).

ANCHORAGE RECORDING DISTRICT
STATE BUSINESS-NO FEE

PROJECT DESIGNATION	SHEET NO.	TOTAL SHEETS
OA31 (051)	R3	R20



T10N R2W
T11N R2W

ANCHORAGE RECORDING DISTRICT

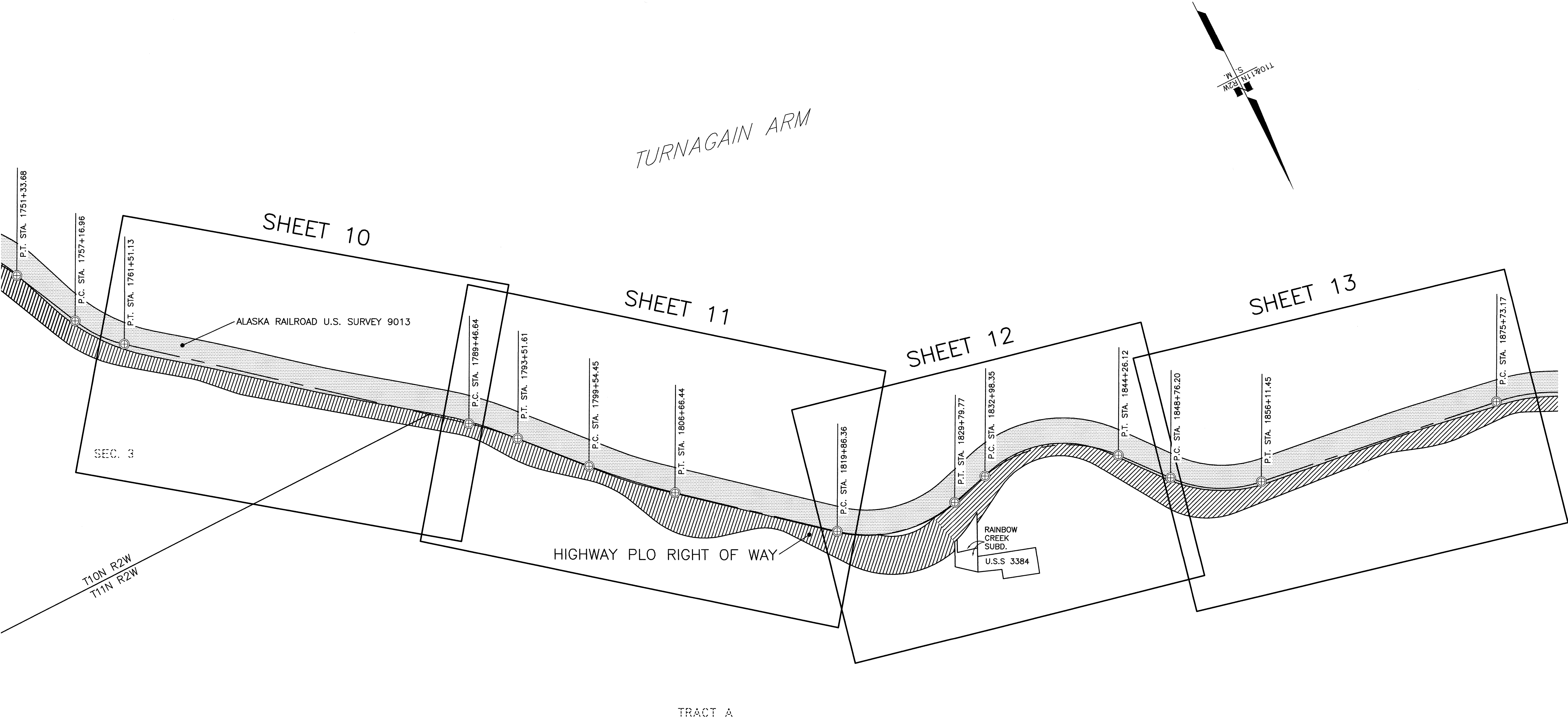
DATE	REVISIONS	BY



CONSULTANT RIGHT OF WAY
SURVEYORS' CERTIFICATE

STATE OF ALASKA DEPARTMENT OF TRANSPORTATION & PUBLIC FACILITIES RIGHT OF WAY BASE MAP ALASKA PROJECT OA31 (051) 59765 SEWARD HIGHWAY: RIGHT OF WAY STUDY MP 105-111			
DRAWN	GEL / CAW	DATE	MARCH 2018
CHECKED	GNM / WNP	DATE	MARCH 2018
SCALE		1"=400'	
SHEET		3 OF 20	

PROJECT DESIGNATION	SHEET NO.	TOTAL SHEETS
0A31 (051)	R4	R20



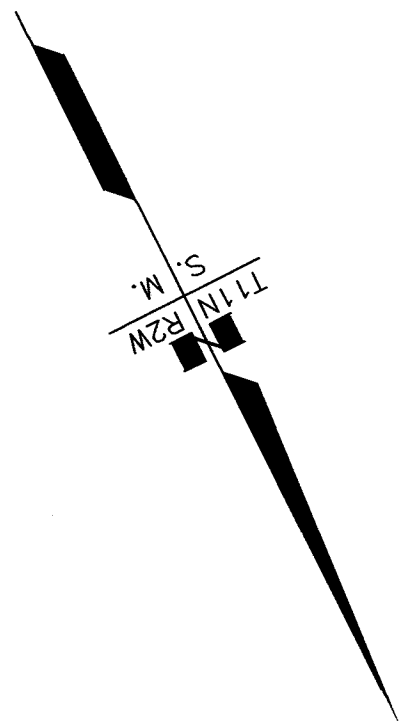
ANCHORAGE RECORDING DISTRICT

DATE	REVISIONS	BY



CONSULTANT RIGHT OF WAY
SURVEYORS CERTIFICATE

STATE OF ALASKA			
DEPARTMENT OF TRANSPORTATION			
&			
PUBLIC FACILITIES			
RIGHT OF WAY BASE MAP			
ALASKA PROJECT			
0A31 (051)			
59765			
SEWARD HIGHWAY: RIGHT OF WAY STUDY			
MP 105-111			
DRAWN	GEL / CAW	DATE	MARCH 2018
CHECKED	GNM / WNP	DATE	MARCH 2018
		SHEET	4 OF 20



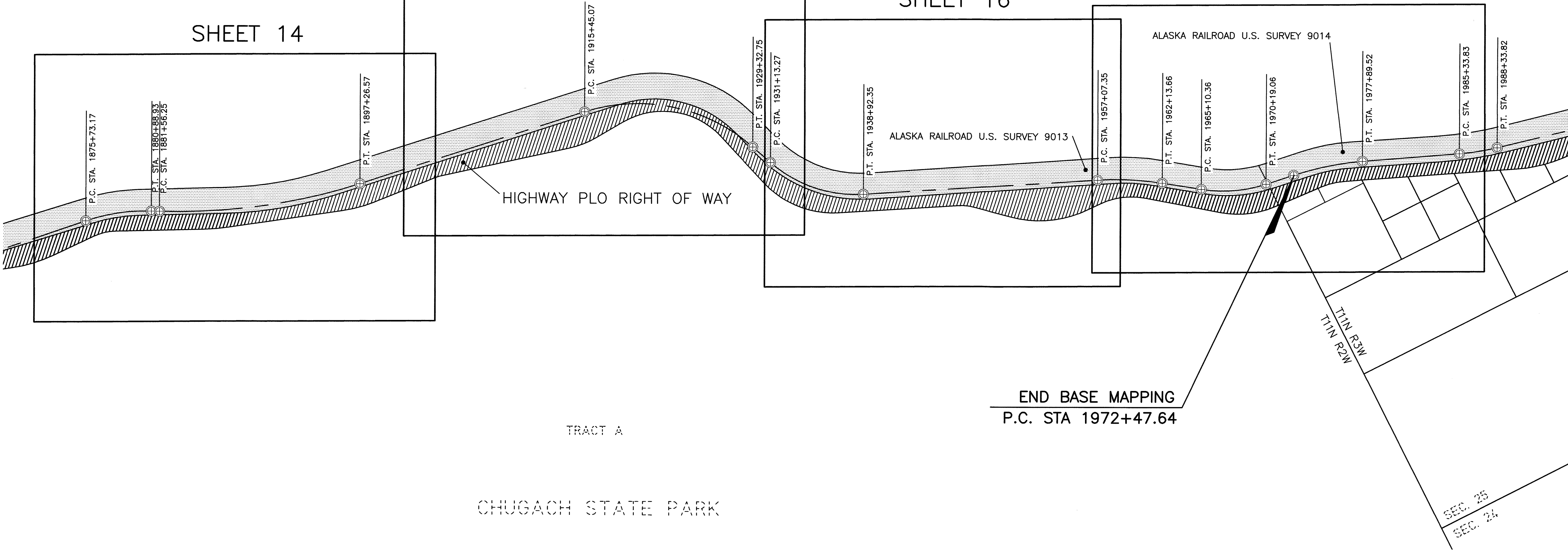
TURNAGAIN ARM

SHEET 15

SHEET 16

SHEET 17

SHEET 14



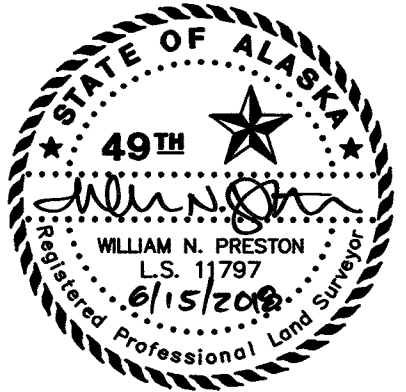
END BASE MAPPING
P.C. STA 1972+47.64

TRACT A

CHUGACH STATE PARK

ANCHORAGE RECORDING DISTRICT

DATE	REVISIONS	BY



CONSULTANT RIGHT OF WAY
SURVEYORS CERTIFICATE

STATE OF ALASKA DEPARTMENT OF TRANSPORTATION & PUBLIC FACILITIES RIGHT OF WAY BASE MAP ALASKA PROJECT 0A31 (051) 59765 SEWARD HIGHWAY: RIGHT OF WAY STUDY MP 105-111			
DRAWN	GEL / CAW	DATE	MARCH 2018
CHECKED	GNM / WNP	DATE	MARCH 2018
		SHEET	5 OF 20

HATCH LEGEND

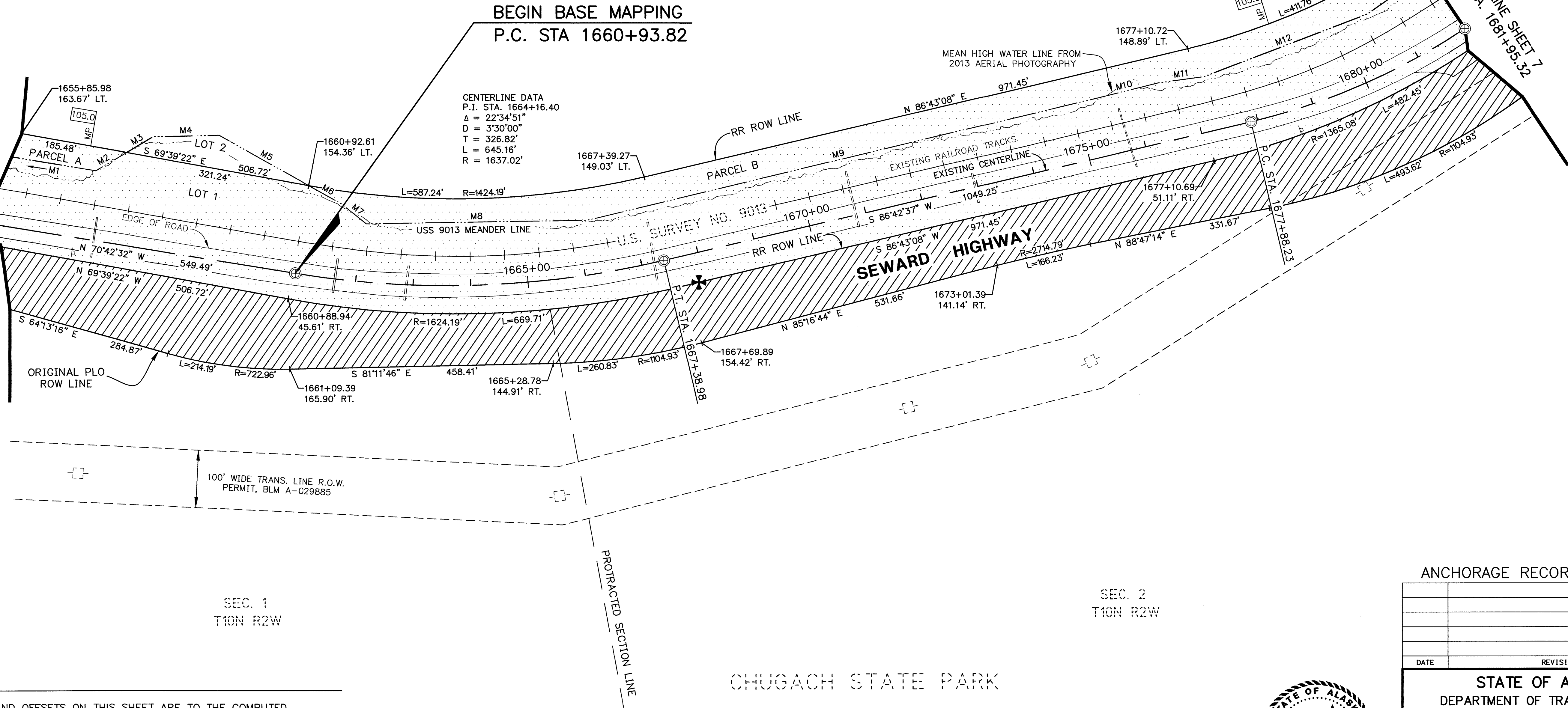
PLO HIGHWAY RIGHT OF WAY
SEE NOTE 9, SHEET 18

RAILROAD RIGHT OF WAY
SEE NOTE 12, SHEET 18

US SURVEY MEANDERS		
M#	BEARING	DISTANCE
M1	N70°23'15"W	380.80'
M2	S69°23'45"W	62.70'
M3	S69°23'03"W	53.44'
M4	N81°16'57"W	114.13'
M5	N50°42'57"W	178.78'
M6	N50°54'20"W	66.67'
M7	N41°00'20"W	54.13'
M8	N80°55'20"W	383.50'
M9	S86°29'40"W	903.64'
M10	S86°13'40"W	118.15'
M11	N87°46'20"W	80.53'
M12	S79°06'40"W	302.97'
M13	S65°19'40"W	632.35'

CENTERLINE DATA
P.I. STA. 1679+93.95
Δ = 20°21'17"
D = 5°00'00"
T = 205.72'
L = 407.09'
R = 1145.92'

SEE RIGHT OF WAY BASEMAP TITLED
"SEWARD HIGHWAY RIGHT OF STUDY
MP 97 - 105, OA31 (051)"
PT STA. 1655+44.33



NOTES

1. STATIONS AND OFFSETS ON THIS SHEET ARE TO THE COMPUTED POSITIONS OF RIGHT OF WAY ANGLE POINTS, POINTS OF CURVATURE AND POINTS OF TANGENCY. FOR MONUMENT LOCATIONS, SEE MONUMENT SUMMARY SHEETS 19-20.
2. FOR GENERAL NOTES AND HISTORY OF PROJECT AREA SEE SHEET 18.
3. ALL CURVES ARE TANGENT UNLESS LABELED WITH CHORD INFORMATION.

ANCHORAGE RECORDING DISTRICT

DATE	REVISIONS	BY



CONSULTANT RIGHT OF WAY
SURVEYORS CERTIFICATE

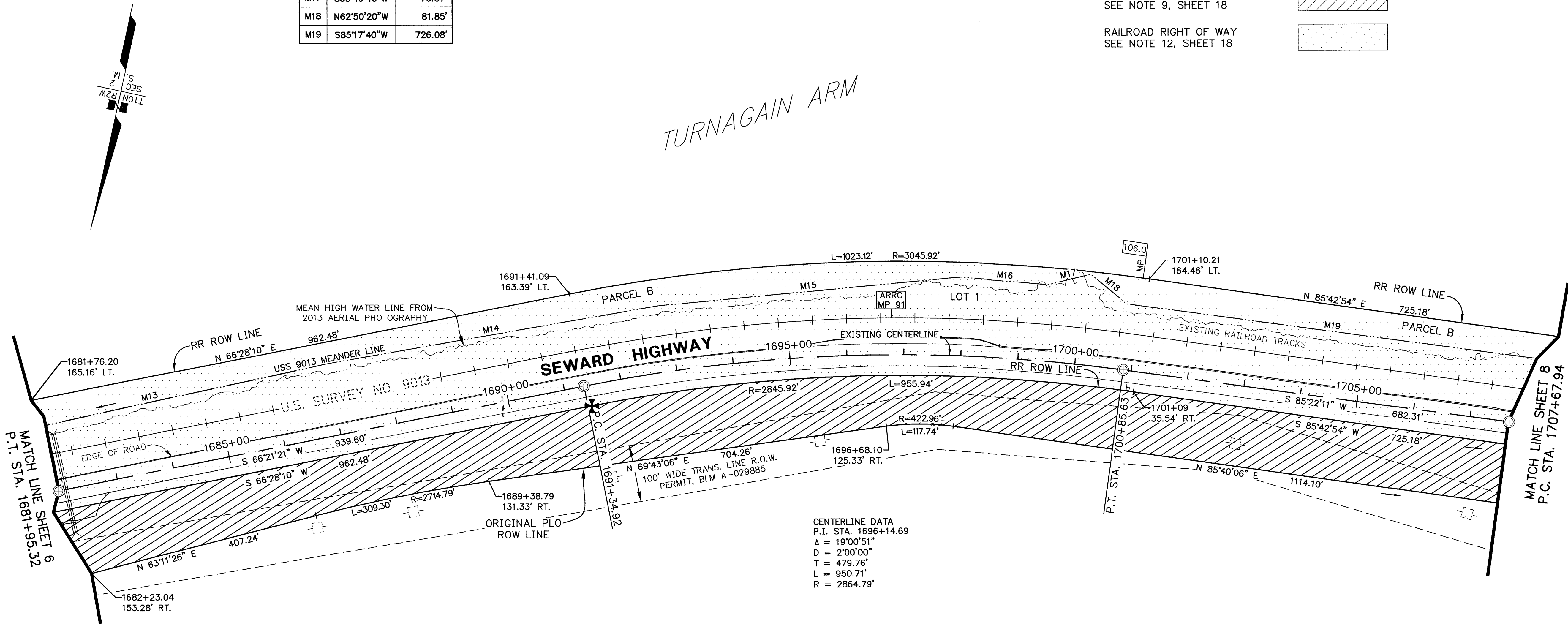
STATE OF ALASKA
DEPARTMENT OF TRANSPORTATION
&
PUBLIC FACILITIES
RIGHT OF WAY BASE MAP
ALASKA PROJECT
OA31 (051)
59765
SEWARD HIGHWAY: RIGHT OF WAY STUDY
MP 105-111

DRAWN	GEL / CAW	DATE	MARCH 2018	SCALE	1"=100'
CHECKED	GNM / WNP	DATE	MARCH 2018	SHEET	6 OF 20

US SURVEY MEANDERS		
M#	BEARING	DISTANCE
M13	S65°19'40"W	632.35'
M14	S67°41'40"W	588.79'
M15	S72°10'40"W	534.00'
M16	S82°18'40"W	154.46'
M17	S63°49'40"W	76.57'
M18	N62°50'20"W	81.85'
M19	S85°17'40"W	726.08'

HATCH LEGEND

PLO HIGHWAY RIGHT OF WAY SEE NOTE 9, SHEET 18	
RAILROAD RIGHT OF WAY SEE NOTE 12, SHEET 18	



SEC. 2
T10N R2W

CHUGACH STATE PARK

NOTES

- STATIONS AND OFFSETS ON THIS SHEET ARE TO THE COMPUTED POSITIONS OF RIGHT OF WAY ANGLE POINTS, POINTS OF CURVATURE AND POINTS OF TANGENCY. FOR MONUMENT LOCATIONS, SEE MONUMENT SUMMARY SHEETS 19-20.
- FOR GENERAL NOTES AND HISTORY OF PROJECT AREA SEE SHEET 18.
- ALL CURVES ARE TANGENT UNLESS LABELED WITH CHORD INFORMATION.

ANCHORAGE RECORDING DISTRICT

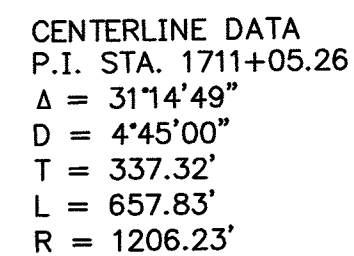
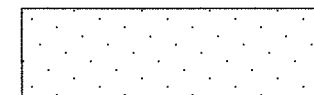
DATE	REVISIONS	BY



CONSULTANT RIGHT OF WAY
SURVEYORS CERTIFICATE

STATE OF ALASKA DEPARTMENT OF TRANSPORTATION & PUBLIC FACILITIES RIGHT OF WAY BASE MAP ALASKA PROJECT 0A31 (051) 59765 SEWARD HIGHWAY: RIGHT OF WAY STUDY MP 105-111			
DRAWN	GEL / CAW	DATE	MARCH 2018
CHECKED	GNM / WNP	DATE	MARCH 2018
SCALE	1"=100'	SHEET	7 OF 20

RAILROAD RIGHT OF WAY
SEE NOTE 12, SHEET 18



CENTERLINE DATA
P.I. STA. 1730+80.50
 $\Delta = 28^{\circ}32'29''$
 $D = 4^{\circ}00'00''$
 $T = 364.33'$
 $L = 713.53'$
 $R = 1432.39'$

US SURVEY MEANDERS		
M#	BEARING	DISTANCE
M19	S85°17'40"W	726.08'
M20	N89°35'20"W	314.85'
M21	S87°42'40"W	125.07'
M22	N87°42'40"E	74.89'
M23	S64°35'04"E	118.75'
M24	S46°34'19"E	67.87'
M25	N46°34'19"W	122.23'
M26	N60°13'19"W	357.07'
M27	S41°57'50"W	40.25'
M28	S24°38'17"W	21.07'
M29	S24°38'17"W	30.43'
M30	N44°15'18"W	50.23'
M31	N40°34'18"W	33.97'
M32	N40°22'19"W	80.40'
M33	N62°33'19"W	432.98'
M34	N61°45'19"W	269.29'
M35	N67°24'19"W	36.96'
M36	N86°27'19"W	179.53'
M37	S68°17'41"W	19.56'
M38	N68°21'16"E	68.13'
M39	S75°47'53"E	63.51'
M40	N35°40'53"E	46.31'
M41	N35°22'19"W	32.79'
M42	N70°53'19"W	88.44'
M43	S84°52'41"W	422.39'

SEC. 2
T10N R2W

CHUGACH STATE PARK

1. STATIONS AND OFFSETS ON THIS SHEET ARE TO THE COMPUTED POSITIONS OF RIGHT OF WAY ANGLE POINTS, POINTS OF CURVATURE AND POINTS OF TANGENCY. FOR MONUMENT LOCATIONS, SEE MONUMENT SUMMARY SHEETS 19-20.
2. FOR GENERAL NOTES AND HISTORY OF PROJECT AREA SEE SHEET 18.
3. ALL CURVES ARE TANGENT UNLESS LABELED WITH CHORD INFORMATION.

CONSULTANT RIGHT OF WAY
SURVEYORS CERTIFICATE

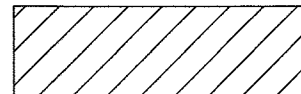
DATE	REVISIONS	BY

STATE OF ALASKA
DEPARTMENT OF TRANSPORTATION
&
PUBLIC FACILITIES
RIGHT OF WAY BASE MAP
ALASKA PROJECT
0A31 (051)
59765
SEWARD HIGHWAY: RIGHT OF WAY STUDY
MP 105-111

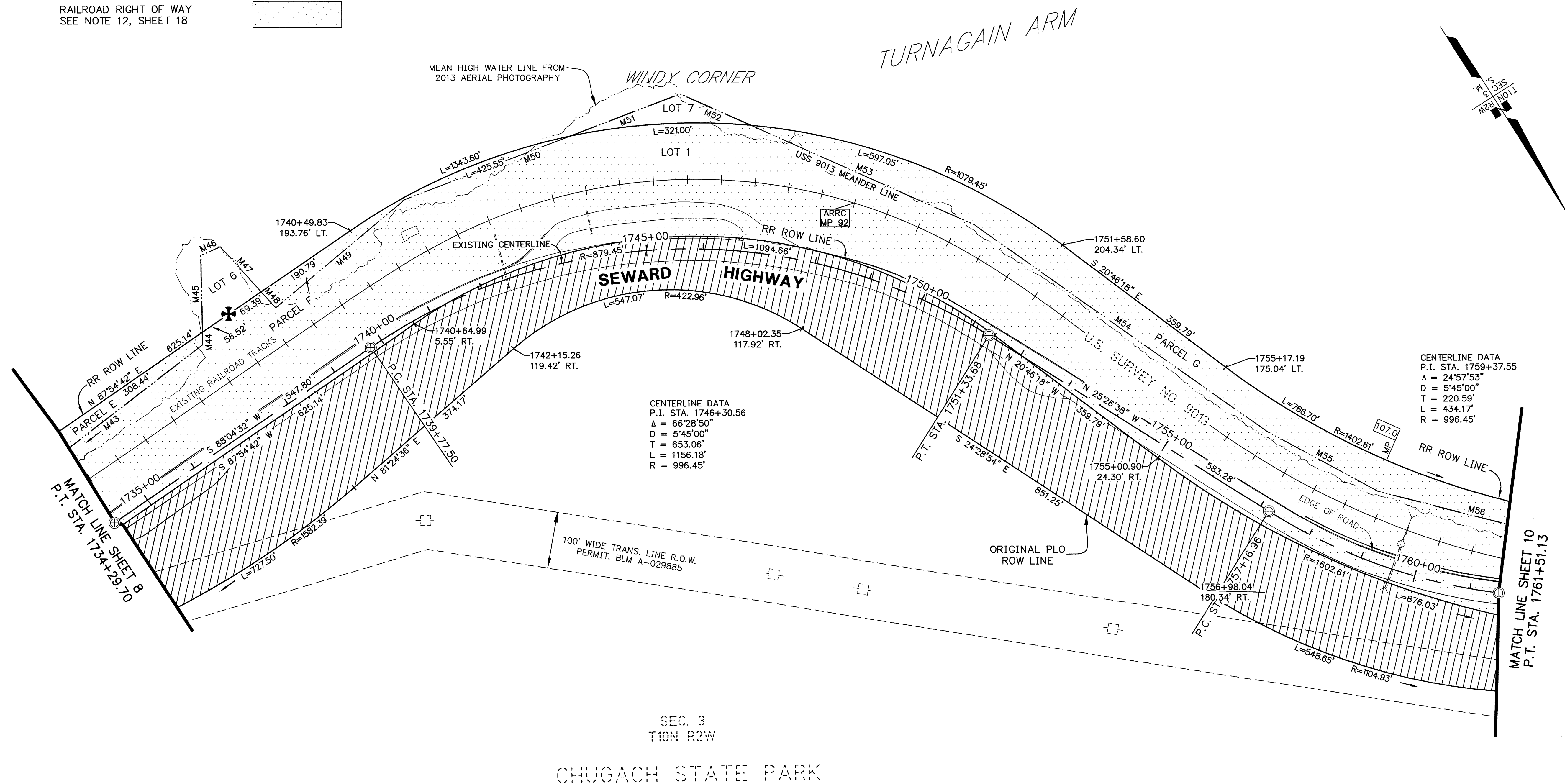
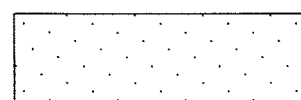
DRAWN	GEL / CAW	DATE	MARCH 2018	SCALE	1"=100'
CHECKED	GNM / WNP	DATE	MARCH 2018	SHEET	8 OF 20

HATCH LEGEND

PLO HIGHWAY RIGHT OF WAY
SEE NOTE 9, SHEET 18



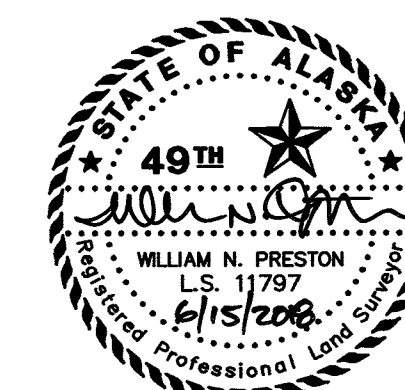
RAILROAD RIGHT OF WAY
SEE NOTE 12, SHEET 18



US SURVEY MEANDERS		
M#	BEARING	DISTANCE
M43	S84°52'41"W	422.39'
M44	S31°16'23"W	22.18'
M45	S31°16'23"W	135.31'
M46	N81°30'18"W	37.67'
M47	N09°51'18"W	107.08'
M48	N09°51'18"W	38.08'
M49	S82°27'17"W	296.94'
M50	N78°33'43"W	313.24'
M51	S78°33'43"E	208.18'
M52	S33°37'43"E	136.83'
M53	N33°37'43"W	431.49'
M54	S22°22'43"W	630.96'
M55	N29°07'43"W	224.40'
M56	N43°06'43"W	355.08'

NOTES

1. STATIONS AND OFFSETS ON THIS SHEET ARE TO THE COMPUTED POSITIONS OF RIGHT OF WAY ANGLE POINTS, POINTS OF CURVATURE AND POINTS OF TANGENCY. FOR MONUMENT LOCATIONS, SEE MONUMENT SUMMARY SHEETS 19-20.
2. FOR GENERAL NOTES AND HISTORY OF PROJECT AREA SEE SHEET 18.
3. ALL CURVES ARE TANGENT UNLESS LABELED WITH CHORD INFORMATION.

CONSULTANT RIGHT OF WAY
SURVEYORS CERTIFICATE

ANCHORAGE RECORDING DISTRICT

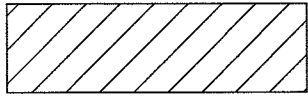
DATE	REVISIONS	BY

STATE OF ALASKA
DEPARTMENT OF TRANSPORTATION
&
PUBLIC FACILITIES
RIGHT OF WAY BASE MAP
ALASKA PROJECT
0A31 (051)
59765
SEWARD HIGHWAY: RIGHT OF WAY STUDY
MP 105-111

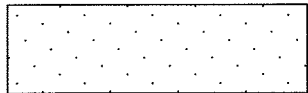
DRAWN	GEL / CAW	DATE	MARCH 2018	SCALE	1"=100'
CHECKED	GNM / WNP	DATE	MARCH 2018	SHEET	9 OF 20

HATCH LEGEND

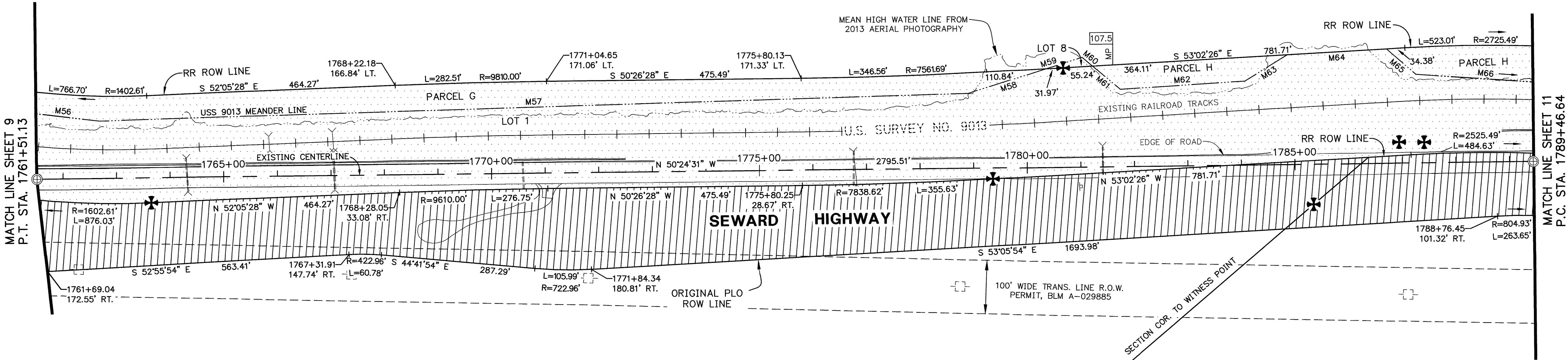
PLO HIGHWAY RIGHT OF WAY
SEE NOTE 9, SHEET 18



RAILROAD RIGHT OF WAY
SEE NOTE 12, SHEET 18

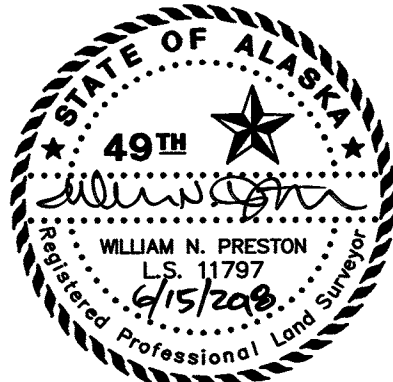


US SURVEY MEANDERS		
M#	BEARING	DISTANCE
M56	N43°06'43"W	355.08'
M57	N51°33'43"W	1622.28'
M58	N67°31'43"W	152.52'
M59	N67°29'16"W	70.58'
M60	N10°00'26"W	25.80'
M61	N09°51'19"W	67.57'
M62	N53°27'19"W	232.94'
M63	N81°35'19"W	93.23'
M64	N53°02'26"W	185.17'
M65	N08°40'19"W	72.73'
M66	N45°56'19"W	509.44'



NOTES

- STATIONS AND OFFSETS ON THIS SHEET ARE TO THE COMPUTED POSITIONS OF RIGHT OF WAY ANGLE POINTS, POINTS OF CURVATURE AND POINTS OF TANGENCY. FOR MONUMENT LOCATIONS, SEE MONUMENT SUMMARY SHEETS 19-20.
- FOR GENERAL NOTES AND HISTORY OF PROJECT AREA SEE SHEET 18.
- ALL CURVES ARE TANGENT UNLESS LABELED WITH CHORD INFORMATION.



CONSULTANT RIGHT OF WAY
SURVEYORS CERTIFICATE

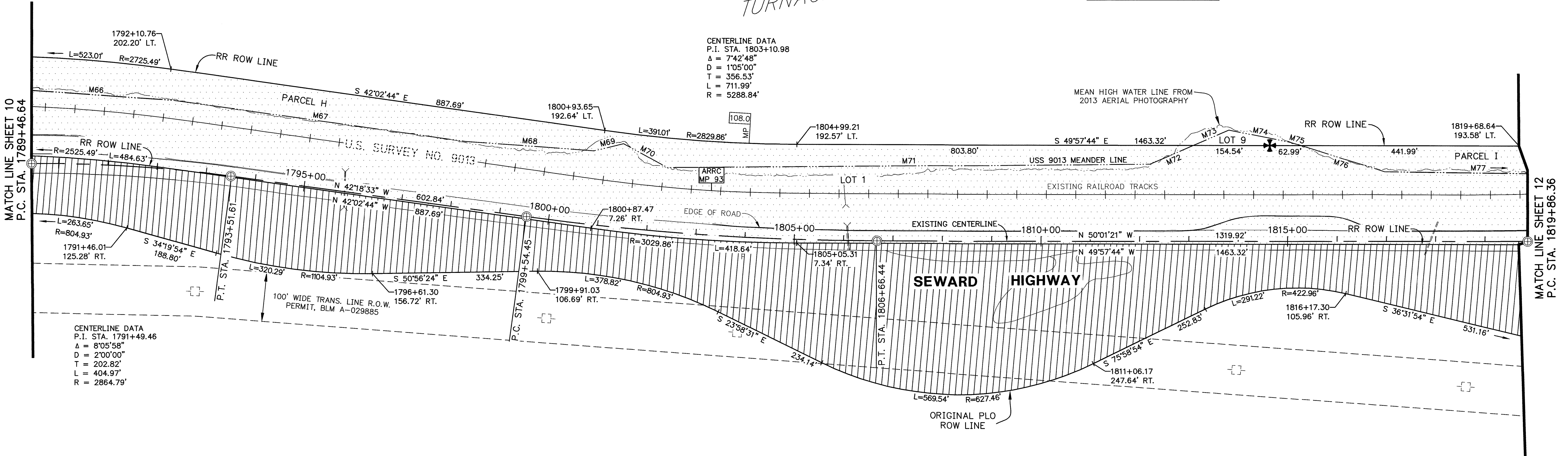
ANCHORAGE RECORDING DISTRICT

DATE	REVISIONS	BY

STATE OF ALASKA DEPARTMENT OF TRANSPORTATION & PUBLIC FACILITIES RIGHT OF WAY BASE MAP ALASKA PROJECT 0A31 (051) 59765 SEWARD HIGHWAY: RIGHT OF WAY STUDY MP 105-111			
DRAWN GEL / CAW	DATE MARCH 2018	SCALE 1"=100'	SHEET 10 OF 20
CHECKED GNM / WNP	DATE MARCH 2018		

US SURVEY MEANDERS		
M#	BEARING	DISTANCE
M66	N45°56'19"W	509.44'
M67	N42°04'19"W	595.23'
M68	N45°59'19"W	261.98'
M69	N63°30'19"W	61.37'
M70	N21°36'19"W	100.96'
M71	N50°31'12"W	978.65'
M72	N73°26'43"W	95.92'
M73	N73°26'43"W	78.24'
M74	N38°47'44"W	127.12'
M75	N32°39'37"W	22.05'
M76	N32°39'37"W	177.56'
M77	N49°16'37"W	380.17'

CENTERLINE DATA
P.I. STA. 1803+10.98
Δ = 7°42'48"
D = 1°05'00"
T = 356.53'
L = 711.99'
R = 5288.84'



CENTERLINE DATA
P.I. STA. 1791+49.46
Δ = 8°05'58"
D = 2°00'00"
T = 202.82'
L = 404.97'
R = 2864.79'

TRACT A
T11N R2W

CHUGACH STATE PARK

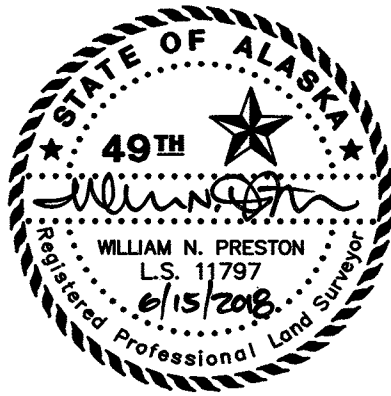
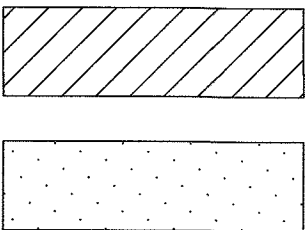
NOTES

- STATIONS AND OFFSETS ON THIS SHEET ARE TO THE COMPUTED POSITIONS OF RIGHT OF WAY ANGLE POINTS, POINTS OF CURVATURE AND POINTS OF TANGENCY. FOR MONUMENT LOCATIONS, SEE MONUMENT SUMMARY SHEETS 19-20.
- FOR GENERAL NOTES AND HISTORY OF PROJECT AREA SEE SHEET 18.
- ALL CURVES ARE TANGENT UNLESS LABELED WITH CHORD INFORMATION.

HATCH LEGEND

PLO HIGHWAY RIGHT OF WAY
SEE NOTE 9, SHEET 18

RAILROAD RIGHT OF WAY
SEE NOTE 12, SHEET 18



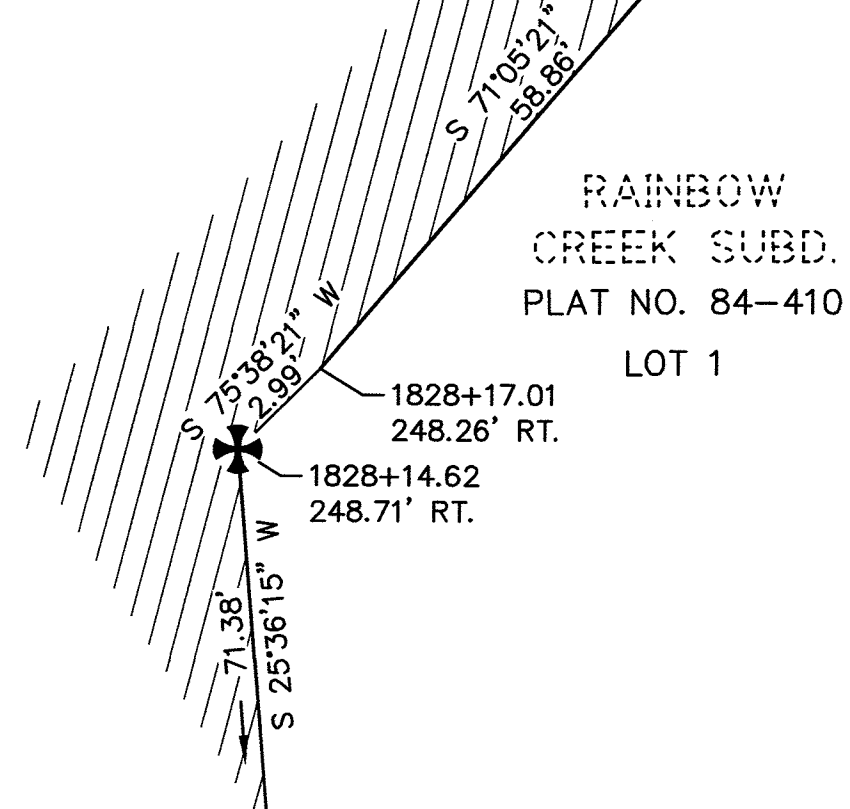
CONSULTANT RIGHT OF WAY
SURVEYORS CERTIFICATE

ANCHORAGE RECORDING DISTRICT

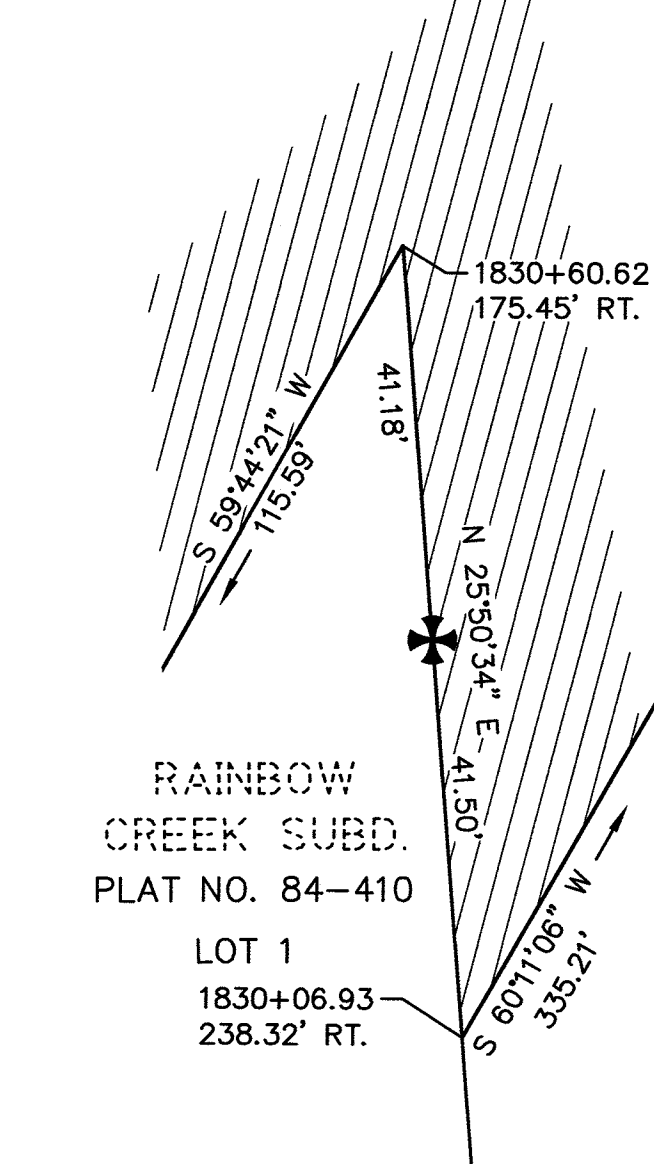
DATE	REVISIONS	BY

STATE OF ALASKA DEPARTMENT OF TRANSPORTATION & PUBLIC FACILITIES RIGHT OF WAY BASE MAP ALASKA PROJECT OA31 (051) 59765 SEWARD HIGHWAY: RIGHT OF WAY STUDY MP 105-111			
DRAWN	GEL / CAW	DATE	MARCH 2018
CHECKED	GNM / WNP	DATE	MARCH 2018
		SHEET	11 OF 20

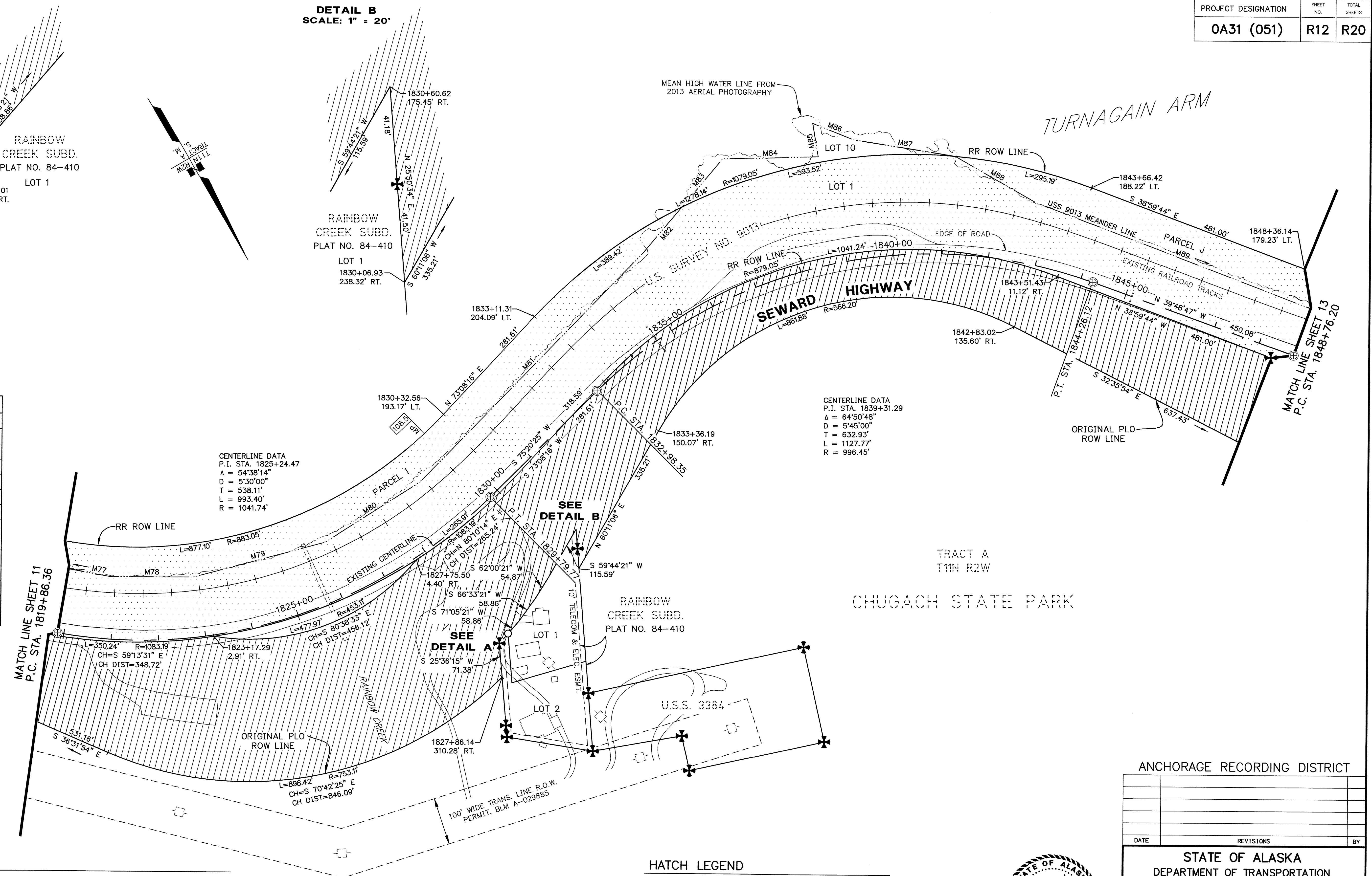
DETAIL A
SCALE: 1" = 5'



DETAIL B
SCALE: 1" = 20'

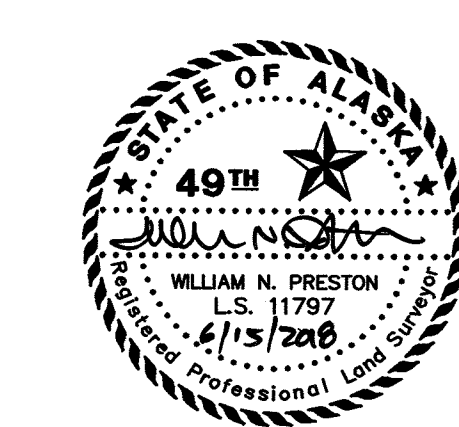


US SURVEY MEANDERS		
M#	BEARING	DISTANCE
M77	N49°16'37"W	380.17'
M78	N59°34'37"W	174.91'
M79	N74°40'37"W	286.45'
M80	S87°38'23"W	237.61'
M81	S74°22'23"W	674.55'
M82	S70°17'23"W	126.35'
M83	N70°22'36"E	133.15'
M84	S61°20'42"E	201.01'
M85	N20°39'18"E	71.18'
M86	S38°07'42"E	93.59'
M87	S50°35'42"E	216.83'
M88	N30°02'37"W	194.21'
M89	N38°42'37"W	658.04'



- NOTES
- STATIONS AND OFFSETS ON THIS SHEET ARE TO THE COMPUTED POSITIONS OF RIGHT OF WAY ANGLE POINTS, POINTS OF CURVATURE AND POINTS OF TANGENCY. FOR MONUMENT LOCATIONS, SEE MONUMENT SUMMARY SHEETS 19-20.
 - FOR GENERAL NOTES AND HISTORY OF PROJECT AREA SEE SHEET 18.
 - ALL CURVES ARE TANGENT UNLESS LABELED WITH CHORD INFORMATION.

HATCH LEGEND	
PLO HIGHWAY RIGHT OF WAY SEE NOTE 9, SHEET 18	
RAILROAD RIGHT OF WAY SEE NOTE 12, SHEET 18	



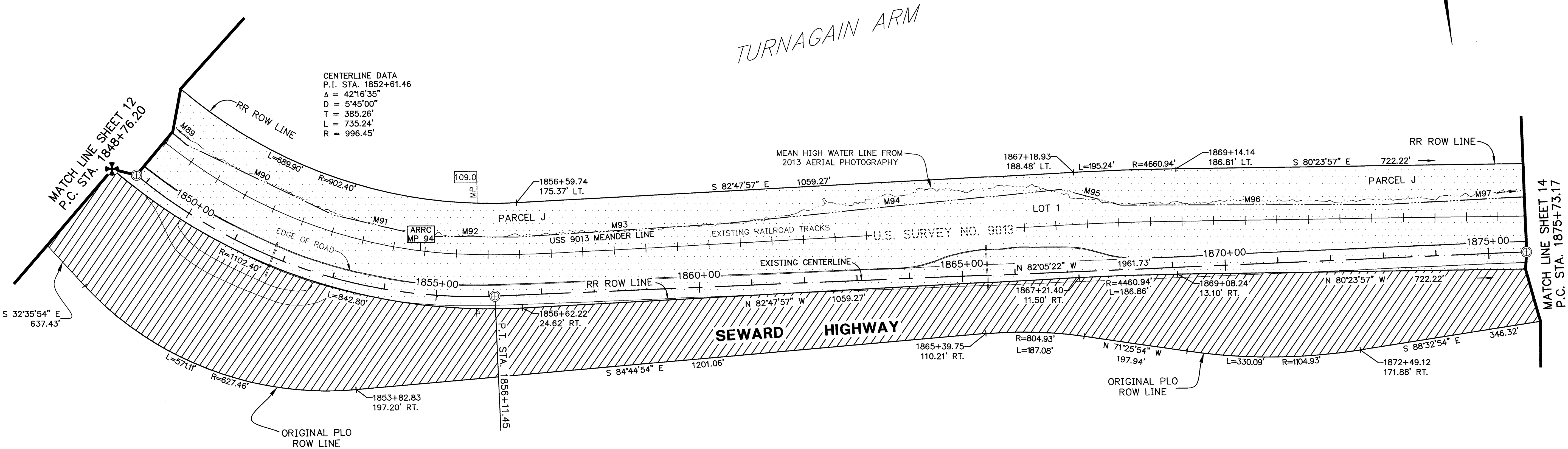
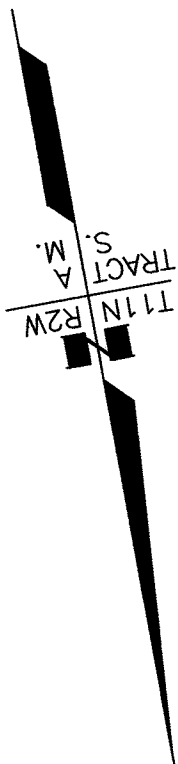
CONSULTANT RIGHT OF WAY
SURVEYORS CERTIFICATE

ANCHORAGE RECORDING DISTRICT			
DATE	REVISIONS	BY	
STATE OF ALASKA DEPARTMENT OF TRANSPORTATION & PUBLIC FACILITIES RIGHT OF WAY BASE MAP ALASKA PROJECT 0A31 (051) 59765 SEWARD HIGHWAY: RIGHT OF WAY STUDY MP 105-111			
DRAWN	GEL / CAW	DATE	MARCH 2018
CHECKED	GNM / WNP	DATE	MARCH 2018
SCALE		1"=100'	
SHEET		12 OF 20	

HATCH LEGEND

PLO HIGHWAY RIGHT OF WAY
SEE NOTE 9, SHEET 18

RAILROAD RIGHT OF WAY
SEE NOTE 12, SHEET 18



CENTERLINE DATA
P.I. STA. 1852+61.46
Δ = 42°16'35"
D = 5°45'00"
T = 385.26'
L = 735.24'
R = 996.45'

US SURVEY MEANDERS		
M#	BEARING	DISTANCE
M89	N38°42'37"W	658.04'
M90	N54°07'37"W	309.55'
M91	N66°31'37"W	178.21'
M92	N79°05'37"W	172.27'
M93	N83°22'37"W	397.33'
M94	N85°28'37"W	643.52'
M95	N64°46'37"W	116.16'
M96	N79°42'37"W	501.62'
M97	N82°41'37"W	376.21'

NOTES

- STATIONS AND OFFSETS ON THIS SHEET ARE TO THE COMPUTED POSITIONS OF RIGHT OF WAY ANGLE POINTS, POINTS OF CURVATURE AND POINTS OF TANGENCY. FOR MONUMENT LOCATIONS, SEE MONUMENT SUMMARY SHEETS 19-20.
- FOR GENERAL NOTES AND HISTORY OF PROJECT AREA SEE SHEET 18.
- ALL CURVES ARE TANGENT UNLESS LABELED WITH CHORD INFORMATION.



CONSULTANT RIGHT OF WAY
SURVEYORS CERTIFICATE

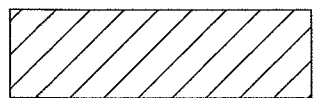
ANCHORAGE RECORDING DISTRICT

DATE	REVISIONS	BY

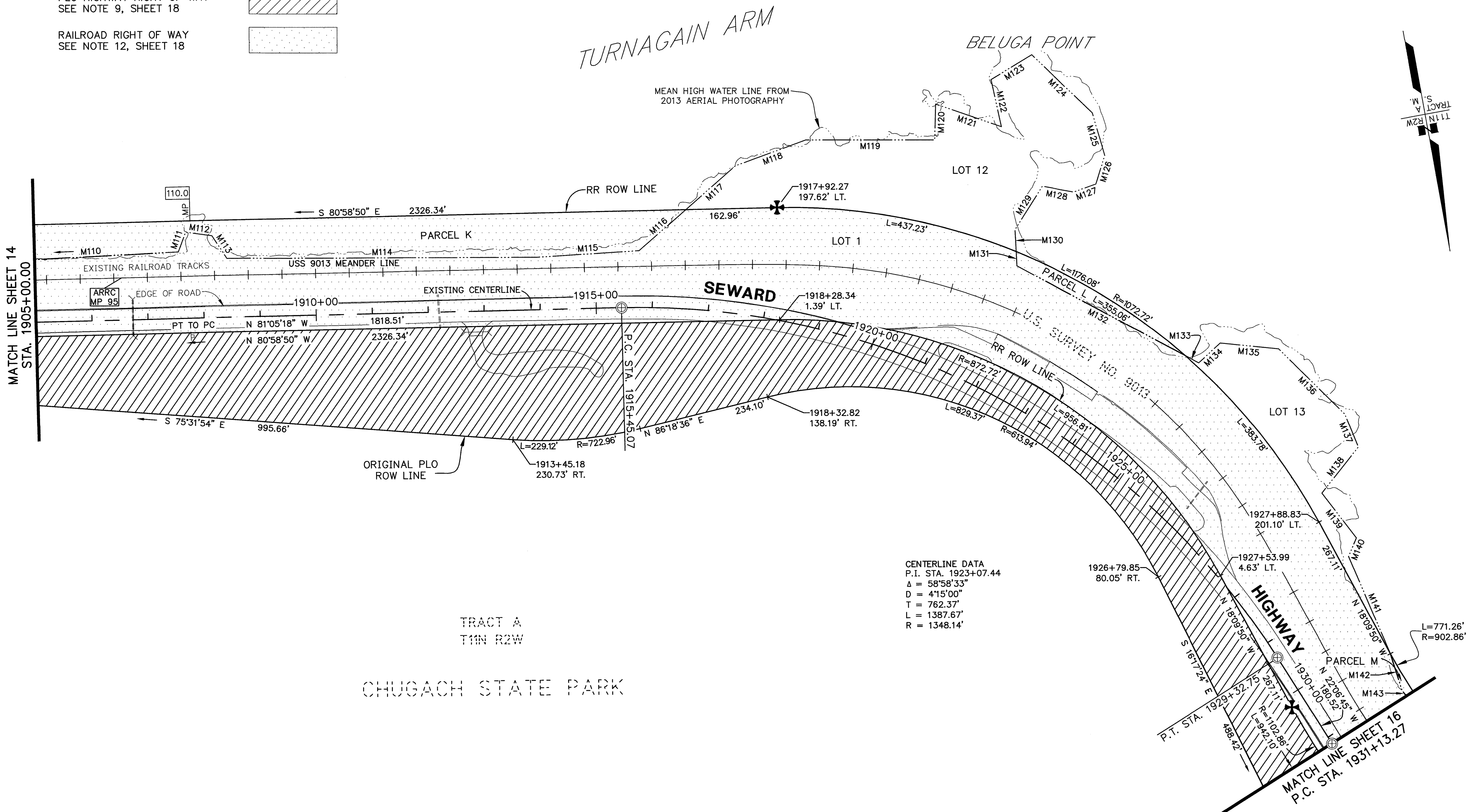
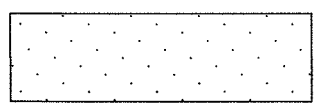
STATE OF ALASKA DEPARTMENT OF TRANSPORTATION & PUBLIC FACILITIES RIGHT OF WAY BASE MAP ALASKA PROJECT 0A31 (051) 59765 SEWARD HIGHWAY: RIGHT OF WAY STUDY MP 105-111			
DRAWN	GEL / CAW	DATE	MARCH 2018
CHECKED	GNM / WNP	DATE	MARCH 2018
SCALE		1"=100'	
SHEET		13	OF 20

HATCH LEGEND

PLO HIGHWAY RIGHT OF WAY
SEE NOTE 9, SHEET 18



RAILROAD RIGHT OF WAY
SEE NOTE 12, SHEET 18



US SURVEY MEANDERS		
M#	BEARING	DISTANCE
M110	N82°38'39"W	520.74'
M111	S30°30'21"W	37.62'
M112	N71°24'39"W	47.52'
M113	N23°24'39"W	48.18'
M114	N79°54'39"W	554.40'
M115	N83°22'39"W	181.50'
M116	S58°57'21"W	110.84'
M117	N58°57'21"E	118.57'
M118	N80°13'37"E	133.38'
M119	S79°43'51"E	230.36'
M120	N11°42'09"E	64.02'
M121	S60°49'51"E	124.09'
M122	N02°04'51"W	85.81'
M123	N68°46'09"E	85.15'
M124	S35°57'51"E	149.17'
M125	S06°01'51"E	79.21'
M126	S27°45'09"W	53.46'
M127	S80°20'09"W	42.24'
M128	N69°36'51"W	56.10'
M129	S42°37'09"W	91.75'
M130	S07°07'09"W	38.94'
M131	N07°04'54"E	25.64'
M132	N51°42'06"W	339.47'
M133	S51°42'06"E	27.86'
M134	N57°34'16"E	52.02'
M135	S73°50'44"E	105.00'
M136	S35°00'44"E	165.76'
M137	S12°06'44"E	63.40'
M138	S48°40'16"W	105.00'
M139	S27°09'44"E	101.04'
M140	S33°09'16"W	35.66'
M141	S12°52'44"E	188.87'
M142	N07°11'57"W	68.67'
M143	N26°05'06"W	159.06'

CENTERLINE DATA
P.I. STA. 1923+07.44
Δ = 58°58'33"
D = 415'00"
T = 762.37'
L = 1387.67'
R = 1348.14'

NOTES

- STATIONS AND OFFSETS ON THIS SHEET ARE TO THE COMPUTED POSITIONS OF RIGHT OF WAY ANGLE POINTS, POINTS OF CURVATURE AND POINTS OF TANGENCY. FOR MONUMENT LOCATIONS, SEE MONUMENT SUMMARY SHEETS 19-20.
- FOR GENERAL NOTES AND HISTORY OF PROJECT AREA SEE SHEET 18.
- ALL CURVES ARE TANGENT UNLESS LABELED WITH CHORD INFORMATION.

ANCHORAGE RECORDING DISTRICT

DATE	REVISIONS	BY



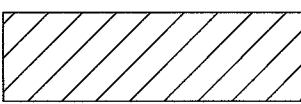
CONSULTANT RIGHT OF WAY
SURVEYORS CERTIFICATE

STATE OF ALASKA DEPARTMENT OF TRANSPORTATION & PUBLIC FACILITIES RIGHT OF WAY BASE MAP ALASKA PROJECT OA31 (051) 59765 SEWARD HIGHWAY: RIGHT OF WAY STUDY MP 105-111			
DRAWN	GEL / CAW	DATE	MARCH 2018
CHECKED	GNM / WNP	DATE	MARCH 2018
		SCALE	1"=100'
		SHEET	15 OF 20

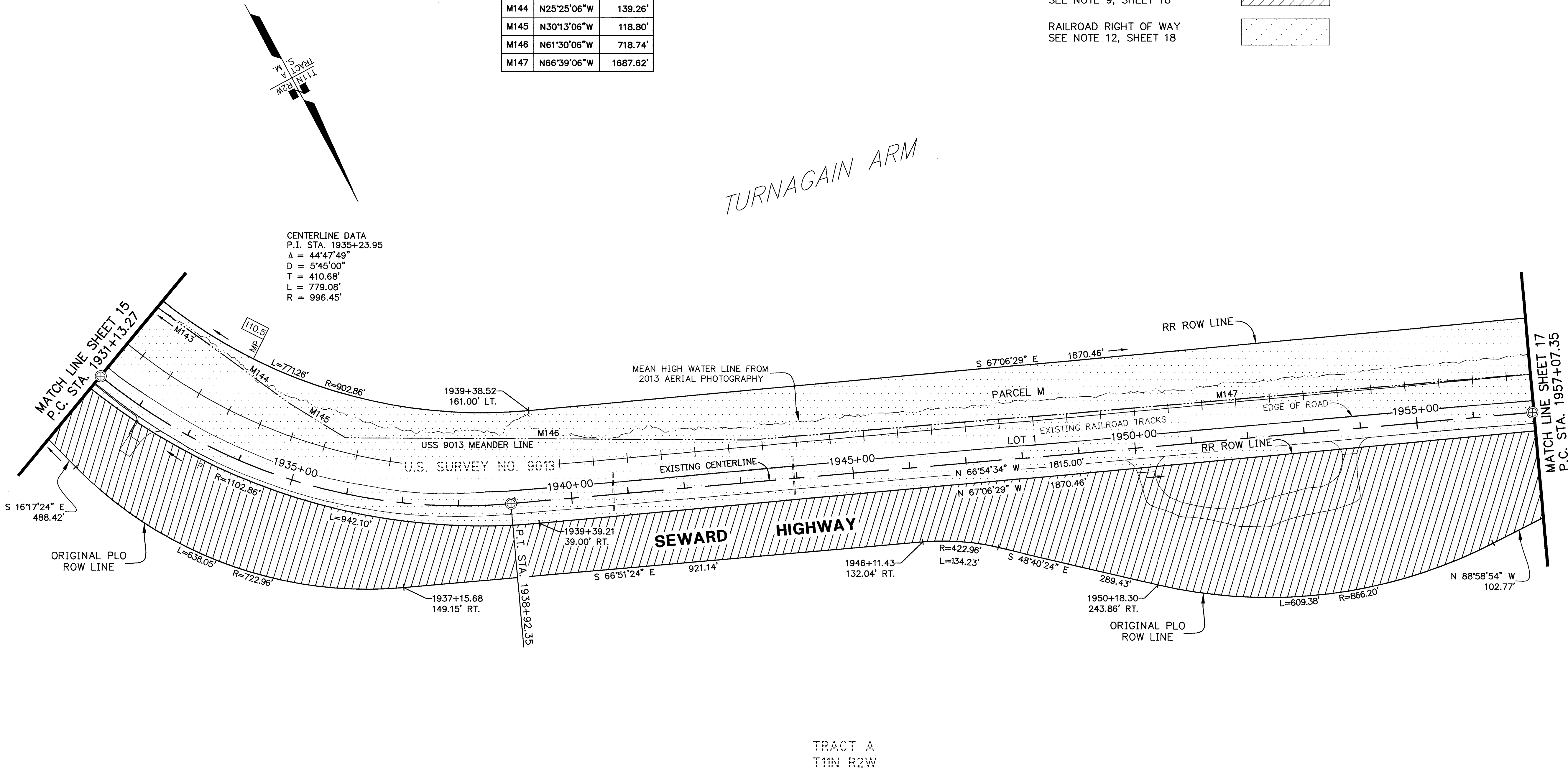
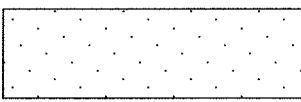
US SURVEY MEANDERS		
M#	BEARING	DISTANCE
M143	N26°05'06"W	159.06'
M144	N25°25'06"W	139.26'
M145	N30°13'06"W	118.80'
M146	N61°30'06"W	718.74'
M147	N66°39'06"W	1687.62'

HATCH LEGEND

PLO HIGHWAY RIGHT OF WAY
SEE NOTE 9, SHEET 18



RAILROAD RIGHT OF WAY
SEE NOTE 12, SHEET 18



NOTES

- STATIONS AND OFFSETS ON THIS SHEET ARE TO THE COMPUTED POSITIONS OF RIGHT OF WAY ANGLE POINTS, POINTS OF CURVATURE AND POINTS OF TANGENCY. FOR MONUMENT LOCATIONS, SEE MONUMENT SUMMARY SHEETS 19-20.
- FOR GENERAL NOTES AND HISTORY OF PROJECT AREA SEE SHEET 18.
- ALL CURVES ARE TANGENT UNLESS LABELED WITH CHORD INFORMATION.

ANCHORAGE RECORDING DISTRICT

DATE	REVISIONS	BY



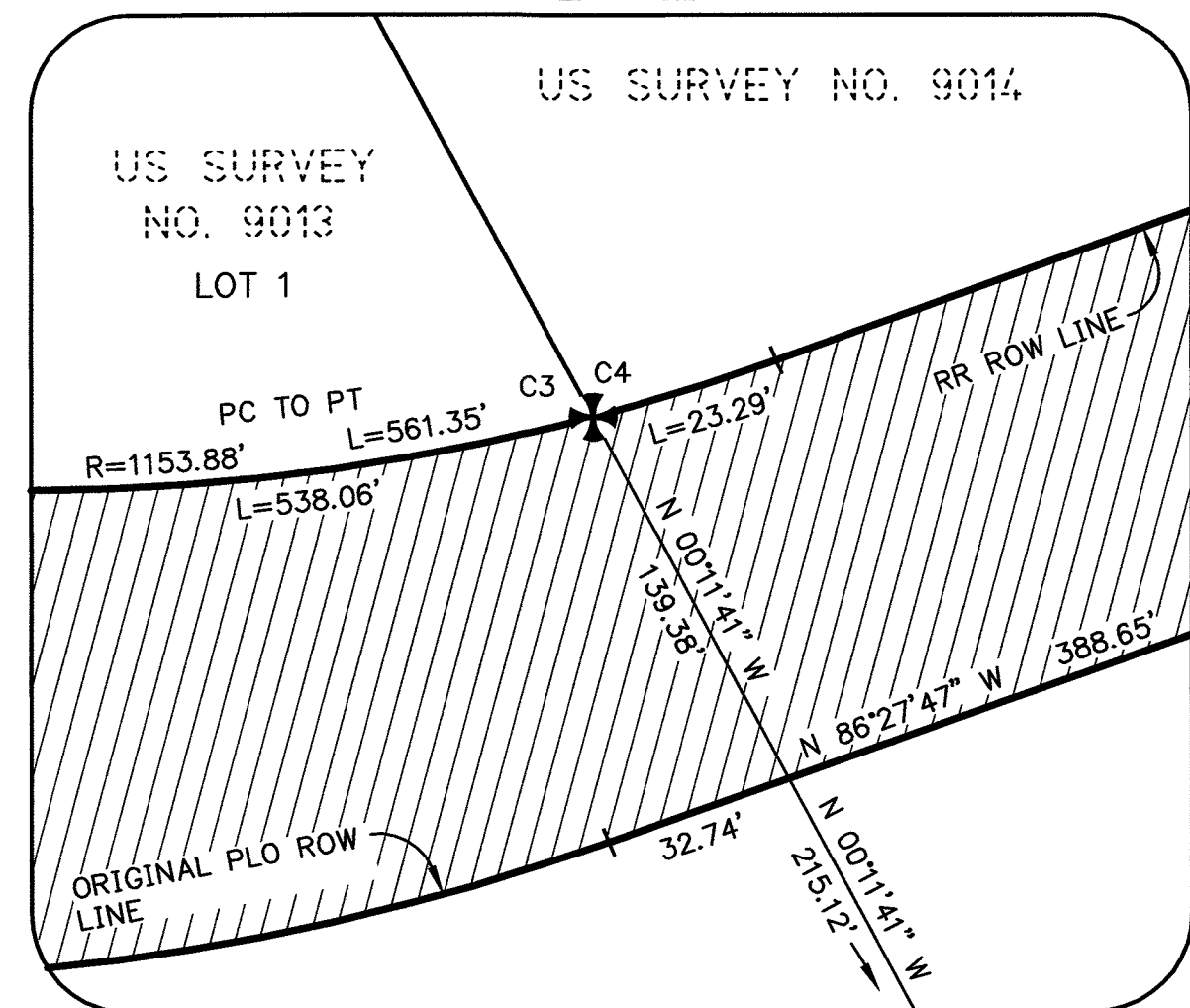
CONSULTANT RIGHT OF WAY
SURVEYORS CERTIFICATE

STATE OF ALASKA
DEPARTMENT OF TRANSPORTATION
&
PUBLIC FACILITIES
RIGHT OF WAY BASE MAP
ALASKA PROJECT
OA31 (051)
59765

SEWARD HIGHWAY: RIGHT OF WAY STUDY
MP 105-111

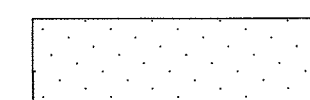
DRAWN	GEL / CAW	DATE	MARCH 2018	SCALE	1"=100'
CHECKED	GNM / WNP	DATE	MARCH 2018	SHEET	16 OF 20

DETAIL



NOT TO SCALE

HATCH LEGEND

PLO HIGHWAY RIGHT OF WAY
SEE NOTE 9, SHEET 18RAILROAD RIGHT OF WAY
SEE NOTE 12, SHEET 18

TURNAGAIN ARM

END BASE MAPPING

P.C. STA 1972+47.64

MEAN HIGH WATER LINE FROM
2013 AERIAL PHOTOGRAPHY

PARCEL A

U.S. SURVEY NO. 9014

RR ROW LINE

EXISTING RAILROAD TRACKS

U.S. SURVEY NO. 9014

RR ROW LINE

U.S. SURVEY NO. 9014

RR ROW LINE

U.S. SURVEY NO. 9014

RR ROW LINE

U.S. SURVEY NO. 9014

RR ROW LINE

U.S. SURVEY NO. 9014

RR ROW LINE

U.S. SURVEY NO. 9014

RR ROW LINE

U.S. SURVEY NO. 9014

RR ROW LINE

U.S. SURVEY NO. 9014

RR ROW LINE

U.S. SURVEY NO. 9014

RR ROW LINE

U.S. SURVEY NO. 9014

RR ROW LINE

U.S. SURVEY NO. 9014

RR ROW LINE

U.S. SURVEY NO. 9014

RR ROW LINE

U.S. SURVEY NO. 9014

RR ROW LINE

U.S. SURVEY NO. 9014

RR ROW LINE

U.S. SURVEY NO. 9014

RR ROW LINE

U.S. SURVEY NO. 9014

RR ROW LINE

U.S. SURVEY NO. 9014

RR ROW LINE

U.S. SURVEY NO. 9014

RR ROW LINE

U.S. SURVEY NO. 9014

RR ROW LINE

U.S. SURVEY NO. 9014

RR ROW LINE

U.S. SURVEY NO. 9014

RR ROW LINE

SEWARD
HIGHWAYSEE
DETAILCENTERLINE DATA
P.I. STA. 1975+19.85
Δ = 13°32'49"
D = 2°30'00"
T = 272.21'
L = 541.87'
R = 2291.83'CENTERLINE DATA
P.I. STA. 1967+69.57
Δ = 27°07'49"
D = 5°20'00"
T = 259.21'
L = 508.70'
R = 1074.30'CENTERLINE DATA
P.I. STA. 1959+61.54
Δ = 12°39'28"
D = 2°30'00"
T = 254.19'
L = 506.31'
R = 2291.83'TRACT A
T11N R2W

CHUGACH STATE PARK

SE1/4 SE1/4 NE1/4
SEC 25TOWNSHIP 11 NORTH
RANGE 3 WEST
SECTION 25

ANCHORAGE RECORDING DISTRICT

DATE	REVISIONS	BY

STATE OF ALASKA
DEPARTMENT OF TRANSPORTATION
&
PUBLIC FACILITIES
RIGHT OF WAY BASE MAP
ALASKA PROJECT
OA31 (051)
59765
SEWARD HIGHWAY: RIGHT OF WAY STUDY
MP 105-111

DRAWN	GEL / CAW	DATE	MARCH 2018	SCALE	1"=100'
CHECKED	GNM / WNP	DATE	MARCH 2018	SHEET	17 OF 20

CONSULTANT RIGHT OF WAY
SURVEYORS CERTIFICATE

Anchorage Recording District PL 2018-37

US SURVEY MEANDERS		
M#	BEARING	DISTANCE
M147	N66°39'06"W	1687.62'
M148	N56°41'06"W	797.28'
M149	N75°16'06"W	192.72'
M150	N80°34'49"W	605.34'
M151	N61°49'42"W	108.25'
M152	N76°00'42"W	178.87'
M153	N56°07'42"W	157.09'
M154	N66°31'42"W	476.55'
M155	N73°48'42"W	422.43'

NOTES

- STATIONS AND OFFSETS ON THIS SHEET ARE TO THE COMPUTED POSITIONS OF RIGHT OF WAY ANGLE POINTS, POINTS OF CURVATURE AND POINTS OF TANGENCY. FOR MONUMENT LOCATIONS, SEE MONUMENT SUMMARY SHEETS 19-20.
- FOR GENERAL NOTES AND HISTORY OF PROJECT AREA SEE SHEET 18.
- ALL CURVES ARE TANGENT UNLESS LABELED WITH CHORD INFORMATION.

HISTORY

THE 1914 ALASKA RAILROAD (AKRR) AUTHORIZATION ACT STATES THAT THERE IS A 100 FOOT RIGHT OF WAY (ROW) RESERVED TO THE UNITED STATES EITHER SIDE OF THE CENTERLINE OF THE RAILROAD. THE ALASKA RAILROAD WAS COMPLETED FROM SEWARD TO ANCHORAGE IN 1917. IN 1950 THE CONSTRUCTION OF THE SEWARD HIGHWAY BEGAN WITHIN TOWNSHIP 11 NORTH, RANGE 2 WEST. WHILE THE HIGHWAY WAS BEING CONSTRUCTED, THE RAILROAD WAS BEING REALIGNED FURTHER OUT TOWARD THE TURNAGAIN ARM, SO THE HIGHWAY WAS CONSTRUCTED ON THE EXISTING RAILROAD BED.

PUBLIC LAND ORDER (PLO) NO. 601 WAS SIGNED ON AUGUST 10, 1949 RESERVING PUBLIC LANDS FOR HIGHWAY PURPOSES AND CLASSIFYING ROAD RIGHT OF WAY. ON OCTOBER 16, 1951 PLO NO. 757 WAS SIGNED AMENDING PLO NO. 601 AND ESTABLISHING THE ROW WIDTH WITHDRAWN FOR THE SEWARD-ANCHORAGE HIGHWAY AT 150 FEET EITHER SIDE OF CENTERLINE (EXCLUSIVE OF THAT PART THEREOF WITHIN THE BOUNDARIES OF THE CHUGACH NATIONAL FOREST). ON OCTOBER 16, 1951, SECRETARIAL ORDER NO. 2665 WAS SIGNED CONFIRMING THE SEWARD HWY ROW WIDTH WITH NO REFERENCE TO THE CHUGACH NATIONAL FOREST.

ON APRIL 7, 1958 PLO NO. 1613 REVOKED PLO NO. 601. THIS RETAINED THE 300 FOOT WIDTH OF THE SEWARD HIGHWAY BUT CHANGED THE ROW STATUS FROM A WITHDRAWAL TO AN EASEMENT.

ALASKA BECAME A STATE ON JANUARY 3, 1959. ON JUNE 30, 1959 THE (OMNIBUS ACT) QUITCLAIM DEED WAS SIGNED TRANSFERRING THE INTEREST IN THE SEWARD-ANCHORAGE HIGHWAY FROM THE FEDERAL GOVERNMENT TO THE STATE OF ALASKA.

CHUGACH STATE PARK WAS ESTABLISHED IN 1970 BY AS 41.21.121 AND THE ALASKA LEGISLATURE DIRECTED THAT THE STATE OWNED LANDS DESCRIBED WITHIN SAID STATUTE WERE TO BE ADDED TO THE PARK.

SOURCE DOCUMENTS FOR THIS PLAN SET

SHEET NO.	PLAN, DOCUMENT OR SOURCE
ALL	PLO 757, ESTABLISHING 300' WIDTH, SEWARD – ANCHORAGE HIGHWAY
ALL	1951 ALASKA ROAD COMMISSION, SEWARD-ANCHORAGE HIGHWAY, ANCHORAGE TO GIRDWOOD PAVING PLANS
ALL	U.S. SURVEY NO. 9013 T10N & T11N, R2W, SM (ALASKA RAILROAD)
17	U.S. SURVEY NO. 9014 T11N, R2W, SM (ALASKA RAILROAD)

GLOSSARY

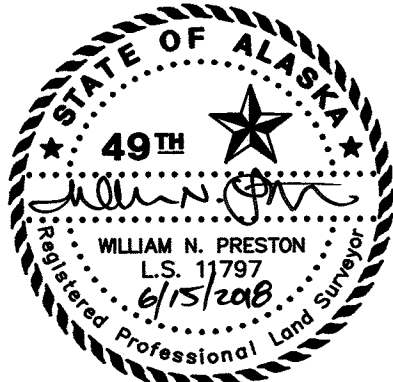
PLO – PUBLIC LAND ORDER, A FEDERAL ORDER AFFECTING PUBLIC LANDS ISSUED BY THE SECRETARY OF THE INTERIOR AS AUTHORIZED BY THE PRESIDENT OF THE UNITED STATES.

SO – SECRETARIAL ORDER (BLM), A FEDERAL ORDER AFFECTING LANDS UNDER THE JURISDICTION OF THE DEPARTMENT OF THE INTERIOR.

PLO ROW – HIGHWAY RIGHT OF WAY ESTABLISHED BY PUBLIC LAND ORDER ACROSS PUBLIC LANDS. PLO 601 DATED 8/10/1949 RESERVED PUBLIC LANDS FOR HIGHWAY PURPOSES. THIS WAS AMENDED BY PLO 757 ON 10/19/1951, AND FURTHER AMENDED BY PLO 1613 ON 4/10/1958.

GENERAL NOTES

1. THE PURPOSE OF THIS RECORD OF SURVEY IS TO REPORT THE LOCATION OF THE ALASKA RAILROAD RIGHT OF WAY (ROW) AS ESTABLISHED BY U.S. SURVEYS 9013 & 9014 AS WELL AS THE LOCATION OF THE SEWARD HIGHWAY ROW AS ESTABLISHED BY PUBLIC LAND ORDER 601, AS AMENDED. THIS EFFORT IS IN SUPPORT OF THE "MEMORANDUM OF UNDERSTANDING" THAT WAS ESTABLISHED BETWEEN ALASKA DEPARTMENT OF TRANSPORTATION & PUBLIC FACILITIES (ADOT&PF), ALASKA DEPARTMENT OF NATURAL RESOURCES (ADNR) & DIVISION OF PARKS AND OUTDOOR RECREATION (DPOR) IN 1993, AS WELL AS THE "MEMORANDUM OF AGREEMENT" SIGNED OCTOBER 2001. THESE DOCUMENTS ARE ON FILE IN THE OFFICES OF ADOT&PF CENTRAL REGION ROW ENGINEERING, 4111 AVIATION AVE, ANCHORAGE AK.
2. THE ROW SURVEYING FOR THIS PROJECT CONSISTS OF A COMPILATION OF VARIOUS SURVEYS FOR ADOT&PF PROJECTS THROUGHOUT THE CURRENT PROJECT AREA. THESE SURVEYS PERFORMED BY ADOT&PF CENTRAL REGIONS LOCATIONS SECTION DATE BACK TO 2007 AND HAVE TAKEN PLACE INTERMITTENTLY THROUGH SEPTEMBER 2013. THE EXISTING RAILROAD CENTERLINE LOCATION IS FROM 2005 AND WAS PROVIDED BY THE ALASKA RAILROAD. SURVEYING AND MAPPING FOR AERIAL PHOTOGRAPHY WAS PERFORMED BY R&M CONSULTANTS AND KODIAK MAPPING IN 2013.
3. ALL DIMENSIONS AND COORDINATES SHOWN HEREON ARE IN U.S. SURVEY FEET.
4. BEARINGS AND DISTANCES NOT FIXED BY RECOVERED MONUMENTATION WERE COMPUTED. LINE WORK MAY NOT TERMINATE AT THE FOUND MONUMENT.
5. ALL PLATS AND DOCUMENTS REFERRED TO BY NUMBER OR BOOK AND PAGE CAN BE FOUND IN THE ANCHORAGE RECORDING DISTRICT (ARD), UNLESS OTHERWISE NOTED.
6. TITLE REPORTS WERE NOT PREPARED IN ASSOCIATION WITH THIS BASE MAP. EASEMENTS MAY EXIST THAT ARE NOT SHOWN HEREON.
7. ALL PARCELS OF LAND OWNED BY THE STATE OF ALASKA THAT’S LOCATED WITHIN 50.00 FEET OF, OR BISECTED BY, A SURVEYED OR PROTRACTED SECTION LINE ARE SUBJECT TO A 50.00 FOOT EASEMENT EACH SIDE OF THE SECTION LINE, WHICH IS RESERVED TO THE STATE OF ALASKA FOR PUBLIC HIGHWAYS UNDER A.S. 19.10.010.
8. THE PROJECT CENTERLINE IS BASED UPON CENTERLINE MONUMENTATION IN THE SEWARD HIGHWAY THAT WAS TIED BY ADOT SURVEY FIELD CREWS. THE CENTERLINE GEOMETRY WAS COMPUTED BY HOLDING THE MONUMENTS TO FIX THE TANGENTS AND THE RECORD RADII WERE HELD TO CREATE THE CURVES. THE RECORD INFORMATION USED IS FROM ADOT&PF PROJECT: SEWARD HIGHWAY BIRD FLATS TO MP 111 F-031-2(55), DATED MARCH 1981. ALL STATIONS AND OFFSETS SHOWN HEREON ARE RELATED TO THE PROJECT CENTERLINE.
9. THE PLO ROW CENTERLINE WAS COMPUTED USING THE BEST AVAILABLE EVIDENCE TO RECREATE THE ORIGINAL 1951 LOCATION OF THE SEWARD HIGHWAY. THE PLAN SET TITLED "SEWARD ANCHORAGE HIGHWAY TURNAGAIN ARM SEC. F-2 PORTION FROM GIRDWOOD TO INDIAN STA. 1304+40 TO STA. 2013+05.74, TRACED MARCH 1951", WAS USED TO ESTABLISH THE PLO CENTERLINE. THE RECORD ALIGNMENT WAS PLACED UTILIZING BOTH U.S. SURVEY 3200 AND THE BLM ASBUILT CENTERLINE AT THE T.11N., R.3W. BOUNDARY.
10. RIGHT OF WAY PERMIT, A029885, WAS ISSUED TO CHUGACH ELECTRIC ASSOCIATION (CEA) FROM BLM ON AUGUST 16, 1955. THE CENTERLINE OF THE 100 FOOT WIDE TRANSMISSION LINE RIGHT OF WAY PERMIT WAS ESTABLISHED FROM CENTER OF STRUCTURE TO CENTER OF STRUCTURE.
11. THE 100 FOOT WIDE TRANSMISSION LINE RIGHT OF WAY (A046811) FROM CAMPBELL CREEK TO BIRD POINT BETWEEN BLM AND CHUGACH ELECTRIC (CEA) EXPIRED ON JUNE 30, 2009.
12. THE ALASKA RAILROAD BOUNDARY WAS CREATED USING A COMBINATION OF RECORD INFORMATION FROM THE U.S. SURVEYS LISTED AND FOUND MONUMENTS. RECORD TANGENTS WERE SCALED (GRANT ADJUSTED) BETWEEN FOUND MONUMENTS, CURVES WERE THEN CREATED BETWEEN THE TANGENTS USING THE RECORD RADIUS.
13. PARCELS A THROUGH M OF U.S. SURVEY 9013 WERE SURVEYED AS TIDELANDS AND WERE PATENTED TO THE ALASKA RAILROAD CORPORATION. PER PATENT 50-2005-0043, RECORDED AS DOCUMENT NUMBER 2005-000041-0, THE REAL PROPERTY DESCRIBED IS "SUBJECT TO THE RIGHT, TITLE, AND INTEREST, IF ANY, THAT HAS OTHERWISE VESTED IN THE STATE OF ALASKA IN ANY SUBMERGED LANDS WHICH ARE SITUATED BENEATH NONTIDAL NAVIGABLE WATERS UP TO THE ORDINARY HIGH WATER MARK OR WHICH ARE PERMANENTLY OR PERIODICALLY COVERED BY TIDAL WATERS UP TO THE LINE OF MEAN HIGH TIDE".
14. PARCEL A OF U.S. SURVEY 9014 WAS SURVEYED AS TIDELANDS AND WAS PATENTED TO THE ALASKA RAILROAD CORPORATION. PER PATENT 50-2005-0043, RECORDED AS DOCUMENT NUMBER 2005-000041-0, THE REAL PROPERTY DESCRIBED IS "SUBJECT TO THE RIGHT, TITLE, AND INTEREST, IF ANY, THAT HAS OTHERWISE VESTED IN THE STATE OF ALASKA IN ANY SUBMERGED LANDS WHICH ARE SITUATED BENEATH NONTIDAL NAVIGABLE WATERS UP TO THE ORDINARY HIGH WATER MARK OR WHICH ARE PERMANENTLY OR PERIODICALLY COVERED BY TIDAL WATERS UP TO THE LINE OF MEAN HIGH TIDE".
15. FOR THIS DOCUMENT THE TERM RIGHT OF WAY REFERS TO THAT COLLECTION OF INTERESTS WHICH AUTHORIZE THE OPERATION OF THE HIGHWAY FACILITY ACROSS THE VARIOUS LANDS SHOWN HEREON. THESE INTERESTS INCLUDE, BUT NOT LIMITED TO: EASEMENT, FEE SIMPLE, AND FEDERAL PUBLIC LAND ORDER (PLO).
16. IMPROVEMENTS RELATED TO THE SEWARD HIGHWAY WITHIN THE ALASKA RAILROAD CORPORATION RIGHT OF WAY ARE ALLOWED UNDER PERMIT NO. 9670 ISSUED BY THE ALASKA RAILROAD CORPORATION TO THE ADOT&PF.



CONSULTANT RIGHT OF WAY
SURVEYORS CERTIFICATE

ANCHORAGE RECORDING DISTRICT

DATE	REVISIONS	BY

STATE OF ALASKA
DEPARTMENT OF TRANSPORTATION
&
PUBLIC FACILITIES
RIGHT OF WAY BASE MAP
ALASKA PROJECT
OA31 (051)
59765
SEWARD HIGHWAY: RIGHT OF WAY STUDY
MP 105-111

DRAWN	GEL / CAW	DATE	MARCH 2018	SCALE	N\A
CHECKED	GNM / WNP	DATE	MARCH 2018	SHEET	18 OF 20

MONUMENT SUMMARY SHEET

RECOVERED MONUMENTS SHEET 6					
LOCATION	MONUMENT TYPE	NORTHING	EASTING	STATION	OFFSET
PT 173+63.59	Fd BC/Bx[DOH]	255143.5392	405996.7167	1655+44.09	0.00
PC 179+13.05	Fd BC/Bx[DOH]	255325.1137	405477.9628	1660+93.70	0.00
PT 185+58.17	Fd BC/Bx[DOH]	255414.3671	404843.0702	1667+39.01	0.00
R.R. ROW 2B L1 S9013	Fd AM[BLM]	255462.3530	404789.7400	1667+89.50	50.97 RT
PC 196+07.17	Fd BC/Bx[DOH]	255354.1630	403795.6415	1677+88.17	0.00
PT 200+14.10	Fd BC/Bx[DOH]	255259.9629	403402.0106	1681+95.05	0.00

RECOVERED MONUMENTS SHEET 7					
LOCATION	MONUMENT TYPE	NORTHING	EASTING	STATION	OFFSET
PC 209+53.40	Fd BC/Bx[DOH]	254883.2017	402541.4524	1691+34.47	0.00
R.R. ROW 3B L1 S9013	Fd AM[BLM]	254913.8332	402520.1234	1691+41.81	36.61 RT
PT 219+04.50	Fd BC/Bx[DOH]	254651.8605	401623.1453	1700+85.83	0.00
PC 225+87.52	Fd BC/Bx[DOH]	254596.7171	400942.2609	1707+68.94	0.00

RECOVERED MONUMENTS SHEET 8					
LOCATION	MONUMENT TYPE	NORTHING	EASTING	STATION	OFFSET
R.R. ROW 4B L1 S9013	Fd AM[BLM]	254725.3828	400383.9943	1713+55.46	37.39 RT
PT 232+45.40	Fd BC/Bx[DOH]	254721.4030	400304.0607	1714+27.35	0.00
PC 245+34.21	Fd BC/Bx[DOH]	255298.6917	399152.0874	1727+15.88	0.00
PT 252+21.84	Fd BC/Bx[DOH]	255449.8413	398462.7674	1734+28.92	0.00

RECOVERED MONUMENTS SHEET 9					
LOCATION	MONUMENT TYPE	NORTHING	EASTING	STATION	OFFSET
WP 5A L1/L6 USS 9013	Fd AM[BLM]	255247.2677	398094.6435	1738+03.64	190.10 LT
PC 257+95.55	Fd BC/Bx[DOH]	255431.4283	397914.7814	1739+77.21	0.00
PT 269+51.52	Fd BC/Bx[DOH]	255999.1499	396981.2592	1751+33.62	0.00
PC 275+34.89	Fd BC/Bx[DOH]	256526.0419	396730.5766	1757+17.11	0.00
PT 279+69.00	Fd BC/Bx[DOH]	256865.8990	396465.6191	1761+51.48	0.00

RECOVERED MONUMENTS SHEET 10					
LOCATION	MONUMENT TYPE	NORTHING	EASTING	STATION	OFFSET
R.R. ROW 6B L1 S9013	Fd AM[BLM]	257037.7247	396331.1134	1763+64.63	46.69 RT
S9013 - PT 92C R	Fd BC[BLM]	258018.8033	395103.5762	1779+35.83	20.40 RT
R.R. ROW WP 7A L1 L8 S9013	Fd AM[BLM]	257944.9628	394869.4001	1780+69.23	185.75 LT
S9013 - WP S34/S3 *T11N/T10N R2W SM	Fd BC[BLM]	258441.9690	394677.1006	1785+34.17	74.70 RT
S9013 - RM to PC 92D R	Fd BC[BLM]	258456.3783	394480.8350	1786+94.59	39.28 LT
S9013 - RM to PC 92D R	Fd BC[BLM]	258486.7943	394445.4067	1787+41.28	38.42 LT
PC 307+62.64	Fd BC/Bx[DOH]	258646.1863	394312.9610	1789+44.92	0.00
S36 S31/S1 S6 *T11N/T10N R2W/R1W SM	Fd BC[BLM]	258544.2395	410321.1811	N/A	N/A

RECOVERED MONUMENTS SHEET 11					
LOCATION	MONUMENT TYPE	NORTHING	EASTING	STATION	OFFSET
PT 311+67.99	Fd BC/Bx[DOH]	258925.5567	394019.7042	1793+50.29	0.00
PC 319+60.67	Fd BC/Bx[DOH]	259372.7038	393612.7003	1799+54.93	0.00
PT 324+82.44	Fd BC/Bx[DOH]	259865.7715	393098.9961	1806+67.52	0.00
S9013 - WP 8A	Fd AC[BLM]	260228.3755	392364.0658	1814+63.66	194.32 LT
WP 8A L1/L9 USS 9013	Fd AM[BLM]	260228.4041	392364.0827	1814+63.67	194.29 LT
PC 338+04.11	Fd BC/Bx[DOH]	260713.2074	392088.2573	1819+86.51	0.00

RECOVERED MONUMENTS SHEET 12					
LOCATION	MONUMENT TYPE	NORTHING	EASTING	STATION	OFFSET
C1 USS 2891	Fd BC[BLM]	261377.8114	391379.2651	1827+41.56	421.78 RT
USLM USS 2891	Fd BC[BLM]	261355.7555	391368.6430	1827+49.66	400.07 RT
WC C2 USS 2891	Fd BC[BLM]	261199.1724	391293.6601	1828+14.62	248.71 RT
C4 USS 2891	Fd BC[BLM]	261494.2831	391237.3553	1828+32.55	548.13 RT
SE L1 Rainbow Creek	Fd Rbr	261190.3790	391267.5133	1828+36.42	242.78 RT
C6 USS 3384	Fd BC[BLM]	261384.1482	391183.7775	1828+78.64	446.30 RT
C3 USS 3384	Fd BC[BLM]	261631.7362	391081.6978	1829+15.35	707.00 RT
C2 USS 3384	Fd BC[BLM]	261560.4710	391058.6876	1829+37.81	642.90 RT
PT 347+98.03	Fd BC/Bx[DOH]	260922.5531	391155.0189	1829+80.18	0.00
WC C3 USS 2891	Fd BC[BLM]	261108.9961	391050.7459	1830+33.88	206.76 RT
C4 USS 3384	Fd BC[BLM]	261721.3584	390805.6367	1831+16.03	861.22 RT
C5 USS 3384	Fd BC[BLM]	261527.0929	390742.6821	1832+26.10	689.21 RT
PC 351+15.34	Fd BC/Bx[DOH]	260842.2369	390847.9932	1832+97.54	0.00
PT 362+43.22	Fd BC/Bx[DOH]	261167.8559	389829.7620	1844+25.90	0.00
S9013 - PC 94 R	Fd AC[BLM]	261493.7102	389585.1477	1848+32.82	20.74 RT
PC 366+93.70	Fd BC/Bx[DOH]	261514.0032	389541.2280	1848+76.53	0.00

CONTROL STATEMENT

COORDINATE SYSTEM:
THIS PROJECT IS LOCATED ENTIRELY WITHIN THE ANCHORAGE BOWL 2000 (2007) ADJUSTMENT, A LOCAL SURFACE GRID COORDINATE SYSTEM, EXPRESSED IN U.S. SURVEY FEET, DEVELOPED BY THE ALASKA DEPARTMENT OF TRANSPORTATION.

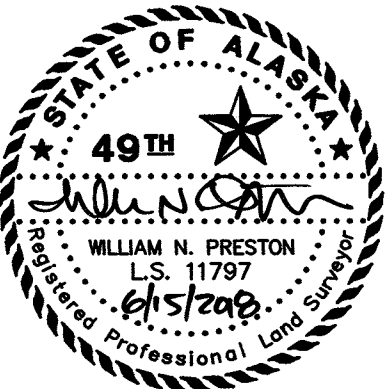
BASIS OF COORDINATES:
THE BASIS OF COORDINATES IS NGS STATION "OMALLEY", LOCATED NEAR THE INTERSECTION OF THE NEW SEWARD HIGHWAY AND O'MALLEY ROAD. SAID STATION HAS ANCHORAGE BOWL 2000 (2007) COORDINATES OF 303,939.5421 N., 353,362.4241 E.

BASIS OF BEARINGS:
THE BASIS OF BEARINGS IS A LOCAL PLANE BEARING BETWEEN NGS STATION "OMALLEY" AND NGS STATION "LOOP 2 USE RM 3 1964". NGS STATION "LOOP 2 USE RM 3 1964" BEARS N 01°43'26.4" E A DISTANCE OF 49,488.4476 U.S. SURVEY FEET FROM NGS STATION "OMALLEY". NGS STATION "LOOP 2 USE RM 3 1964" HAS ANCHORAGE BOWL 2000 (2007) COORDINATES OF 353,405.5545 N., 354,851.2786 E.

TRANSLATION PARAMETERS:
TO CONVERT THE LOCAL BOWL 2000 COORDINATES TO NAD83 (2007) ALASKA STATE PLANE, ZONE 4, COORDINATES, EXPRESSED IN U.S. SURVEY FEET;
TRANSLATE USING +2,296,868.6878' N., +1,312,517.4904' E., AND SCALE USING 0.9998910192.



DEPARTMENT LOCATIONS
SURVEYORS CERTIFICATE



CONSULTANT RIGHT OF WAY
SURVEYORS CERTIFICATE

ANCHORAGE RECORDING DISTRICT

DATE	REVISIONS	BY

STATE OF ALASKA DEPARTMENT OF TRANSPORTATION & PUBLIC FACILITIES RIGHT OF WAY BASE MAP ALASKA PROJECT OA31 (051) 59765 SEWARD HIGHWAY: RIGHT OF WAY STUDY MP 105–111			
DRAWN	GEL / CAW	DATE	MARCH 2018
CHECKED	GNM / WNP	DATE	MARCH 2018
SCALE	N/A	SHEET	19 OF 20

MONUMENT SUMMARY SHEET

RECOVERED MONUMENTS SHEET 13					
LOCATION	MONUMENT TYPE	NORTHING	EASTING	STATION	OFFSET
PT 374+28.45	Fd BC/Bx[DOH]	261862.6834	388913.3375	1856+11.27	0.00
PC 393+89.67	Fd BC/Bx[DOH]	262132.5771	386970.9186	1875+72.35	0.00

RECOVERED MONUMENTS SHEET 16					
LOCATION	MONUMENT TYPE	NORTHING	EASTING	STATION	OFFSET
PT 457+08.88	Fd BC/Bx[DOH]	264641.8549	381506.7721	1938+92.36	0.00
PC 483+96.60	Fd BC/Bx[DOH]	265352.5825	379839.7357	1957+04.58	0.00

RECOVERED MONUMENTS SHEET 14					
LOCATION	MONUMENT TYPE	NORTHING	EASTING	STATION	OFFSET
C11B L1 USS 9013	Fd AM[BLM]	262174.6781	386918.0057	1876+31.93	33.24 RT
PT 399+05.14	Fd BC/Bx[DOH]	262292.6184	386483.8009	1880+87.86	0.00
PC 399+68.61	Fd BC/Bx[DOH]	262322.9561	386428.0202	1881+51.36	0.00
C12A L1 USS 9013	Fd AM[BLM]	262451.8535	385741.7623	1888+43.03	165.14 LT
PT 415+37.62	Fd BC/Bx[DOH]	262826.1259	384949.2041	1897+21.09	0.00

RECOVERED MONUMENTS SHEET 17					
LOCATION	MONUMENT TYPE	NORTHING	EASTING	STATION	OFFSET
S9013 - PC 96 R	Fd AC[BLM]	265423.8381	379755.5156	1958+11.41	30.19 RT
PT 488+98.08	Fd BC/Bx[DOH]	265598.0762	379402.3276	1962+07.18	0.01 LT
PC 492+04.59	Fd BC/Bx[DOH]	265776.5868	379154.3459	1965+12.73	0.00
PT 497+11.54	Fd BC/Bx[DOH]	265965.5540	378689.1392	1970+19.54	0.00
C3 L1 USS 9013	Fd AM[BLM]	266013.7704	378675.6597	1970+40.09	45.65 RT
WC S25 S30 *T11N R3W SM	Fd BC[BLM]	266368.2619	378674.4550	1970+94.40	395.96 RT
PC 499+13.45	Fd BC/Bx[DOH]	265999.1357	378467.5620	1972+43.64	0.00
PT 504+97.87	Fd BC/Bx[DOH]	266141.6219	377946.3076	1977+85.28	0.00
PC 511+15.56	Fd BC/Bx[DOH]	266424.8229	377251.1267	1985+35.93	0.00

RECOVERED MONUMENTS SHEET 15					
LOCATION	MONUMENT TYPE	NORTHING	EASTING	STATION	OFFSET
PC 433+61.67	Fd BC/Bx[DOH]	263108.7134	383147.0373	1915+45.28	0.00
C14A L1 USS 9013	Fd AM[BLM]	262982.4724	382842.2061	1917+92.20	197.84 LT
PT 447+48.27	Fd BC/Bx[DOH]	263932.2190	382107.4501	1929+31.82	0.00
S9013 - PC 95A R	Fd AC[BLM]	264023.9471	382097.8570	1930+20.42	25.64 RT
PC 449+30.39	Fd BC/Bx[DOH]	264100.8651	382038.9274	1931+13.86	0.00



DEPARTMENT LOCATIONS
SURVEYORS CERTIFICATE



CONSULTANT RIGHT OF WAY
SURVEYORS CERTIFICATE

ANCHORAGE RECORDING DISTRICT

DATE	REVISIONS	BY

2018 - 37

Plat #

Anchorage

Rec Dist

6/252018

Date

Time 2:13 PM

STATE OF ALASKA

DEPARTMENT OF TRANSPORTATION

&

PUBLIC FACILITIES

RIGHT OF WAY BASE MAP

ALASKA PROJECT

0A31 (051)

59765

SEWARD HIGHWAY: RIGHT OF WAY STUDY

MP 105-111

DRAWN	GEL / CAW	DATE	MARCH 2018	SCALE	N/A
CHECKED	GNM / WNP	DATE	MARCH 2018	SHEET	20 OF 20