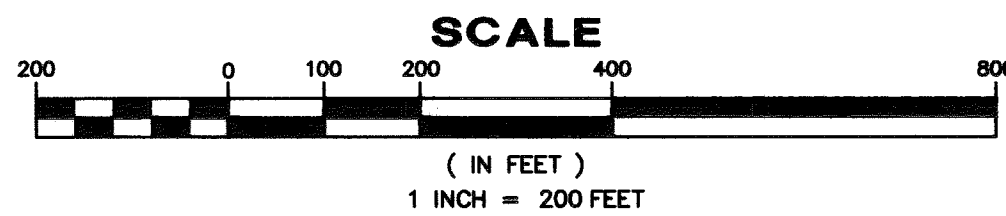
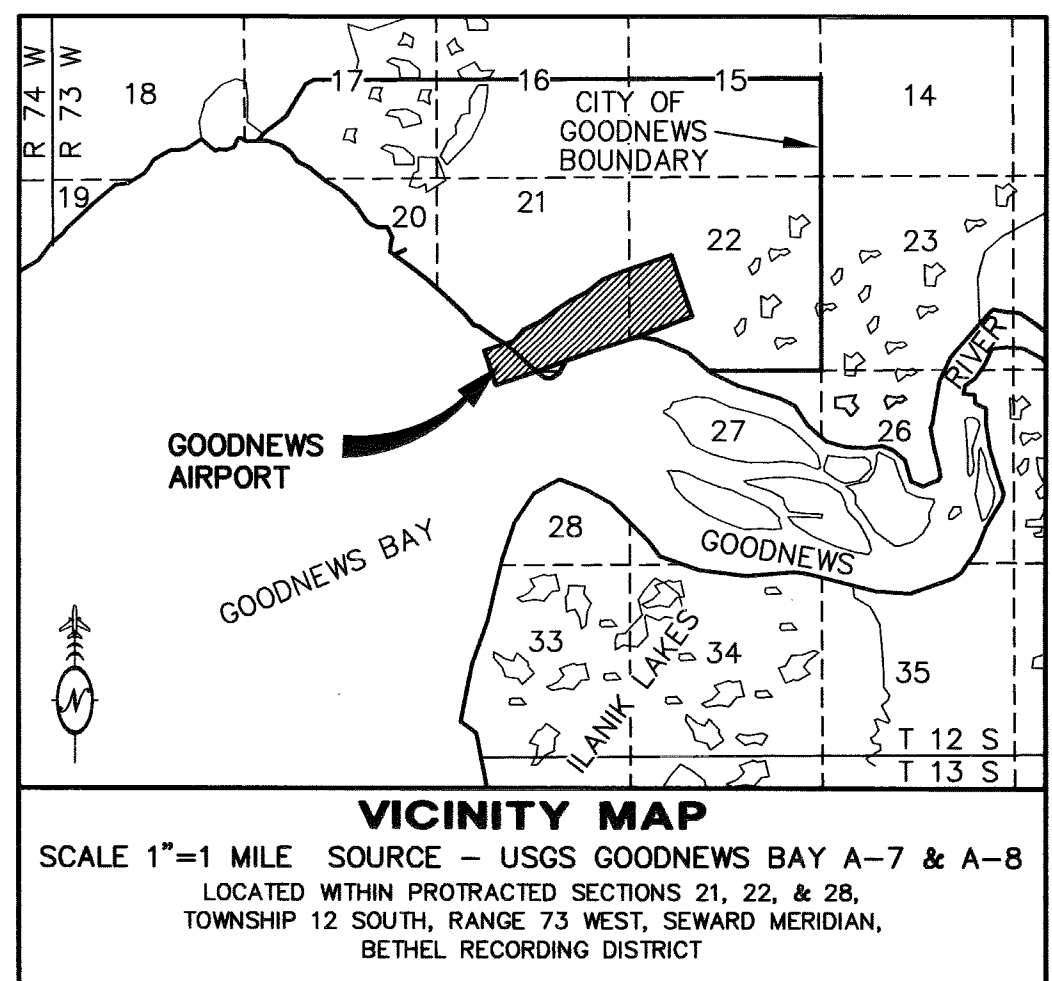


MAGNETIC DECLINATION  
13°06' EAST, JULY 2012, NOAA



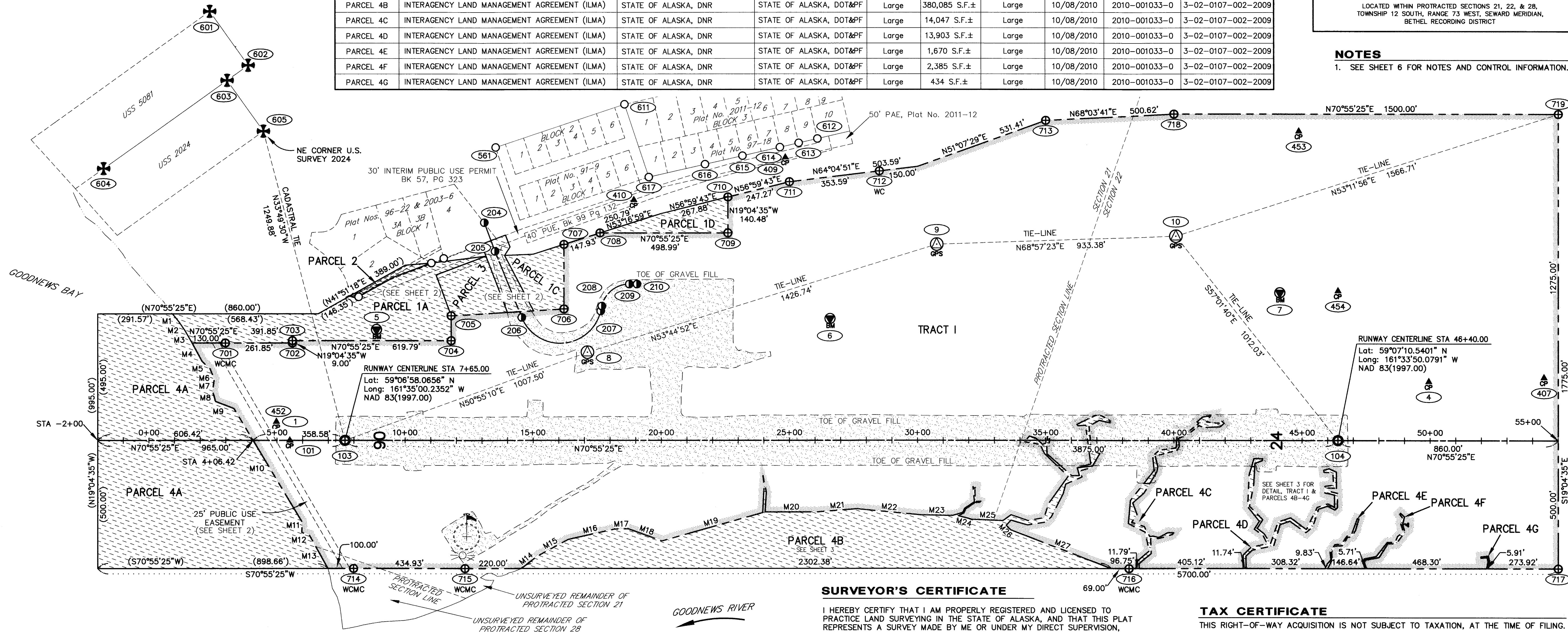
**PROPERTY STATUS**

PARCEL NUMBER	INTEREST ACQUIRED	GRANTOR	GRANTEE	LARGER PARCEL AREA	NET TAKE	REMAINDER	DATE ACQUIRED	RECORDED DOCUMENT NO.	ACQUIRED A.I.P. No.
TRACT I	SURFACE ESTATE SUBSURFACE ESTATE	KUITSARAK, INC.	STATE OF ALASKA, DOT&PF	Large	161,249 Ac.±	Large	6/06/2008	2008-000660-0	3-02-0107-002-2009
PARCEL 1A	AVIGATION & HAZARD EASEMENT (SURFACE) AVIGATION & HAZARD EASEMENT (SUBSURFACE)	KUITSARAK, INC. CALISTA, INC.	STATE OF ALASKA, DOT&PF	Large	172,097 S.F.±	-	6/06/2008	2008-000661-0	3-02-0107-002-2009
PARCEL 1B	ACCESS, AVIGATION & HAZARD EASEMENT (SURFACE) ACCESS, AVIGATION & HAZARD EASEMENT (SUBSURFACE)	KUITSARAK, INC. CALISTA, INC.	STATE OF ALASKA, DOT&PF	Large	25,609 S.F.	-	6/06/2008	2008-000662-0	3-02-0107-002-2009
PARCEL 1C	AVIGATION & HAZARD EASEMENT (SURFACE) AVIGATION & HAZARD EASEMENT (SUBSURFACE)	KUITSARAK, INC. CALISTA, INC.	STATE OF ALASKA, DOT&PF	Large	40,487 S.F.	-	6/06/2008	2008-000663-0	3-02-0107-002-2009
PARCEL 1D	AVIGATION & HAZARD EASEMENT (SURFACE) AVIGATION & HAZARD EASEMENT (SUBSURFACE)	KUITSARAK, INC. CALISTA, INC.	STATE OF ALASKA, DOT&PF	Large	37,224 S.F.	-	6/06/2008	2008-000664-0	3-02-0107-002-2009
PARCEL 2	AVIGATION & HAZARD EASEMENT (SURFACE) AVIGATION & HAZARD EASEMENT (SUBSURFACE)	KUITSARAK, INC. CALISTA, INC.	STATE OF ALASKA, DOT&PF	39,945 S.F.	6,243 S.F.	-	6/06/2008	2008-000665-0	3-02-0107-002-2009
PARCEL 3	AVIGATION & HAZARD EASEMENT (SURFACE) AVIGATION & HAZARD EASEMENT (SUBSURFACE)	KUITSARAK, INC. / GLENN OTTLEY CALISTA, INC.	STATE OF ALASKA, DOT&PF	42,274 S.F.	42,274 S.F.	-	6/06/2008	2008-000666-0	3-02-0107-002-2009
PARCEL 4A	INTERAGENCY LAND MANAGEMENT AGREEMENT (ILMA)	STATE OF ALASKA, DNR	STATE OF ALASKA, DOT&PF	Large	13,711 Ac.±	Large	10/08/2010	2010-001033-0	3-02-0107-002-2009
PARCEL 4B	INTERAGENCY LAND MANAGEMENT AGREEMENT (ILMA)	STATE OF ALASKA, DNR	STATE OF ALASKA, DOT&PF	Large	380,085 S.F.±	Large	10/08/2010	2010-001033-0	3-02-0107-002-2009
PARCEL 4C	INTERAGENCY LAND MANAGEMENT AGREEMENT (ILMA)	STATE OF ALASKA, DNR	STATE OF ALASKA, DOT&PF	Large	14,047 S.F.±	Large	10/08/2010	2010-001033-0	3-02-0107-002-2009
PARCEL 4D	INTERAGENCY LAND MANAGEMENT AGREEMENT (ILMA)	STATE OF ALASKA, DNR	STATE OF ALASKA, DOT&PF	Large	13,903 S.F.±	Large	10/08/2010	2010-001033-0	3-02-0107-002-2009
PARCEL 4E	INTERAGENCY LAND MANAGEMENT AGREEMENT (ILMA)	STATE OF ALASKA, DNR	STATE OF ALASKA, DOT&PF	Large	1,670 S.F.±	Large	10/08/2010	2010-001033-0	3-02-0107-002-2009
PARCEL 4F	INTERAGENCY LAND MANAGEMENT AGREEMENT (ILMA)	STATE OF ALASKA, DNR	STATE OF ALASKA, DOT&PF	Large	2,385 S.F.±	Large	10/08/2010	2010-001033-0	3-02-0107-002-2009
PARCEL 4G	INTERAGENCY LAND MANAGEMENT AGREEMENT (ILMA)	STATE OF ALASKA, DNR	STATE OF ALASKA, DOT&PF	Large	434 S.F.±	Large	10/08/2010	2010-001033-0	3-02-0107-002-2009



**NOTES**

- SEE SHEET 6 FOR NOTES AND CONTROL INFORMATION.



**LEGEND**

- PRIMARY SURVEY CONTROL MONUMENT, SET THIS SURVEY
- BLM MONUMENT, PER SCD 2004-5, BETHEL RECORDING DISTRICT
- PRIMARY CENTERLINE MONUMENT, SET THIS SURVEY
- PRIMARY MONUMENT, SET THIS SURVEY
- SURVEY CONTROL POINT
- BENCH MARK
- SECONDARY MONUMENT, PER SCD 2004-5, BETHEL RECORDING DISTRICT
- SURVEY POINT NUMBER, SEE DESCRIPTION SHEET 5
- M# MEANDER, SEE MEANDER TABLE SHEET 2, SEE NOTE 7 SHEET 2
- 965.00' MEASURED THIS SURVEY, UNLESS NOTED OTHERWISE
- (1011.19') RECORD DIMENSION, FROM ACQUISITION DOCUMENT IN PROPERTY STATUS TABLE
- ROTATING BEACON
- LIGHTED WIND CONE
- SEGMENTED CIRCLE
- FEE TITLE
- AVIGATION AND HAZARD EASEMENT / ILMA, SEE PROPERTY STATUS TABLE ABOVE
- AIRPORT BOUNDARY
- PARCEL BOUNDARY
- RUNWAY / ROAD CENTERLINE
- UNSURVEYED LINE, UNLESS NOTED OTHERWISE
- SURVEYED LINE

**SURVEYOR'S CERTIFICATE**

I HEREBY CERTIFY THAT I AM PROPERLY REGISTERED AND LICENSED TO PRACTICE LAND SURVEYING IN THE STATE OF ALASKA, AND THAT THIS PLAT REPRESENTS A SURVEY MADE BY ME OR UNDER MY DIRECT SUPERVISION, THAT THE MONUMENTS SHOWN HEREON ACTUALLY EXIST AS DESCRIBED, AND THAT ALL DIMENSIONS AND OTHER DETAILS ARE CORRECT.

*Tallak D. Maakestad*  
TALLAK D. MAAKESTAD  
WHPACIFIC, INC.  
300 WEST 31st AVE  
ANCHORAGE, AK 99503

1/31/2014  
DATE

**PLAT APPROVAL**

THIS PLAT IS APPROVED BY THE COMMISSIONER OF NATURAL RESOURCES, OR THE COMMISSIONER'S DESIGNEE, IN ACCORDANCE WITH AS 40.15.

*Shirley J. Jensen*  
COMMISSIONER  
DATE 05.2014  
BETHEL RECORDING DISTRICT PLAT 2014-7

**TAX CERTIFICATE**

THIS RIGHT-OF-WAY ACQUISITION IS NOT SUBJECT TO TAXATION, AT THE TIME OF FILING.

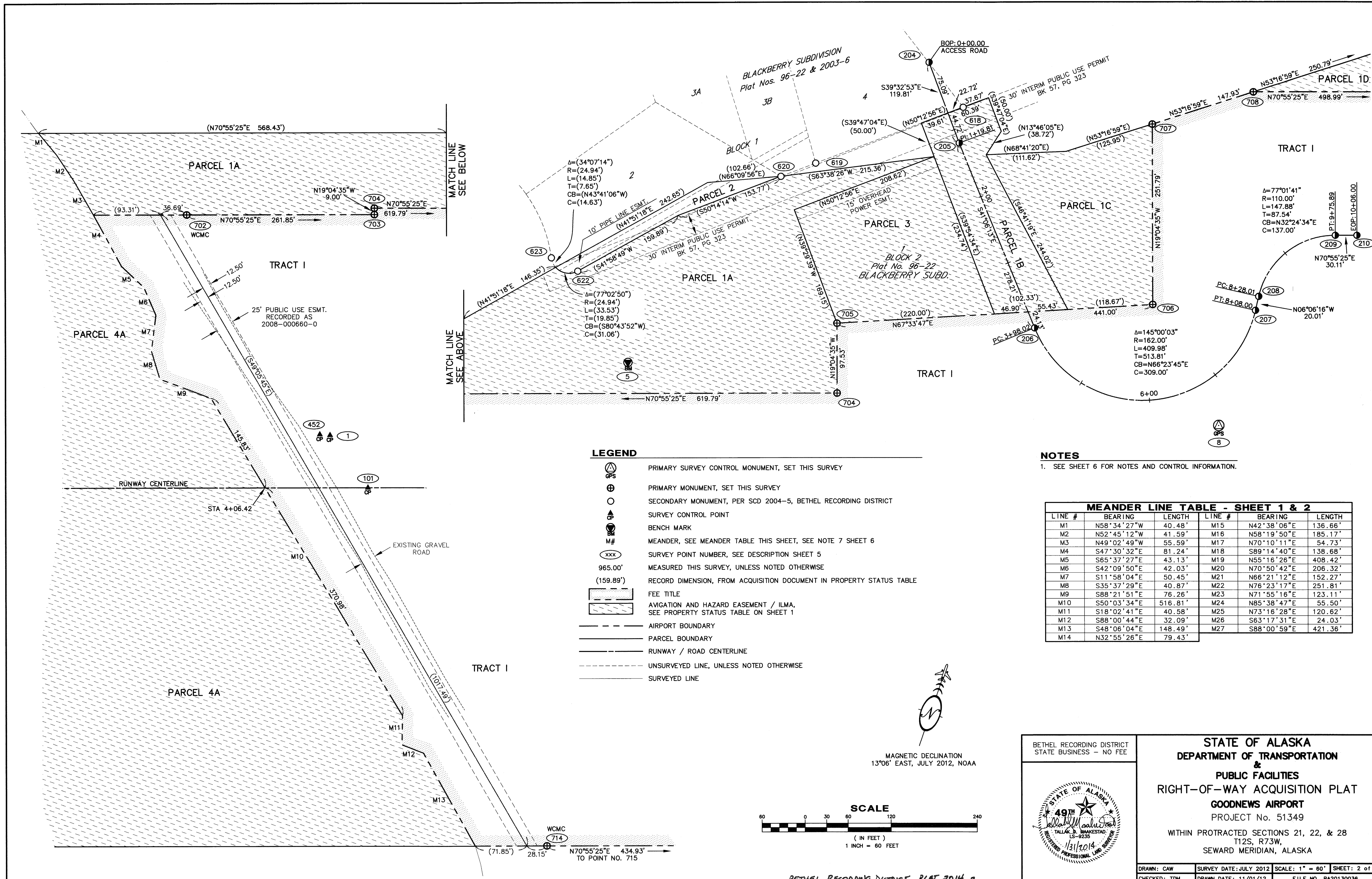
BETHEL RECORDING DISTRICT  
STATE BUSINESS - NO FEE



**STATE OF ALASKA**  
**DEPARTMENT OF TRANSPORTATION**  
**&**  
**PUBLIC FACILITIES**  
**RIGHT-OF-WAY ACQUISITION PLAT**  
**GOODNEWS AIRPORT**  
PROJECT No. 51349  
WITHIN PROTRACTED SECTIONS 21, 22, & 28  
T12S, R73W,  
SEWARD MERIDIAN, ALASKA

DRAWN: CAW  
CHECKED: TDM  
SURVEY DATE: JULY 2012  
DRAWN DATE: 11/01/12  
SCALE: 1" = 200'  
FILE NO. PA20130036  
SHEET: 1 of 6





LEGEND

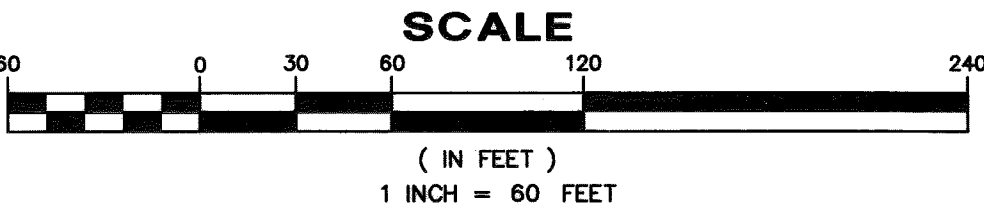
- PRIMARY SURVEY CONTROL MONUMENT, SET THIS SURVEY
- PRIMARY MONUMENT, SET THIS SURVEY
- SECONDARY MONUMENT, PER SCD 2004-5, BETHEL RECORDING DISTRICT
- SURVEY CONTROL POINT
- BENCH MARK
- MEANDER, SEE MEANDER TABLE THIS SHEET, SEE NOTE 7 SHEET 6
- SURVEY POINT NUMBER, SEE DESCRIPTION SHEET 5
- MEASURED THIS SURVEY, UNLESS NOTED OTHERWISE
- RECORD DIMENSION, FROM ACQUISITION DOCUMENT IN PROPERTY STATUS TABLE
- FEE TITLE
- AVIGATION AND HAZARD EASEMENT / ILMA, SEE PROPERTY STATUS TABLE ON SHEET 1
- AIRPORT BOUNDARY
- PARCEL BOUNDARY
- RUNWAY / ROAD CENTERLINE
- UNSURVEYED LINE, UNLESS NOTED OTHERWISE
- SURVEYED LINE

NOTES

- 1. SEE SHEET 6 FOR NOTES AND CONTROL INFORMATION.

MEANDER LINE TABLE - SHEET 1 & 2					
LINE #	BEARING	LENGTH	LINE #	BEARING	LENGTH
M1	N58°34'27"W	40.48'	M15	N42°38'06"E	136.66'
M2	N52°45'12"W	41.59'	M16	N58°19'50"E	185.17'
M3	N49°02'49"W	55.59'	M17	N70°10'11"E	54.73'
M4	S47°30'32"E	81.24'	M18	S89°14'40"E	138.68'
M5	S65°37'27"E	43.13'	M19	N55°16'26"E	408.42'
M6	S42°09'50"E	42.03'	M20	N70°50'42"E	206.32'
M7	S11°58'04"E	50.45'	M21	N66°21'12"E	152.27'
M8	S35°37'29"E	40.87'	M22	N76°23'17"E	251.81'
M9	S88°21'51"E	76.26'	M23	N71°55'16"E	123.11'
M10	S50°03'34"E	516.81'	M24	N85°38'47"E	55.50'
M11	S18°02'41"E	40.58'	M25	N73°16'28"E	120.62'
M12	S88°00'44"E	32.09'	M26	S63°17'31"E	24.03'
M13	S48°06'04"E	148.49'	M27	S88°00'59"E	421.36'
M14	N32°55'26"E	79.43'			

MAGNETIC DECLINATION  
13°06' EAST, JULY 2012, NOAA



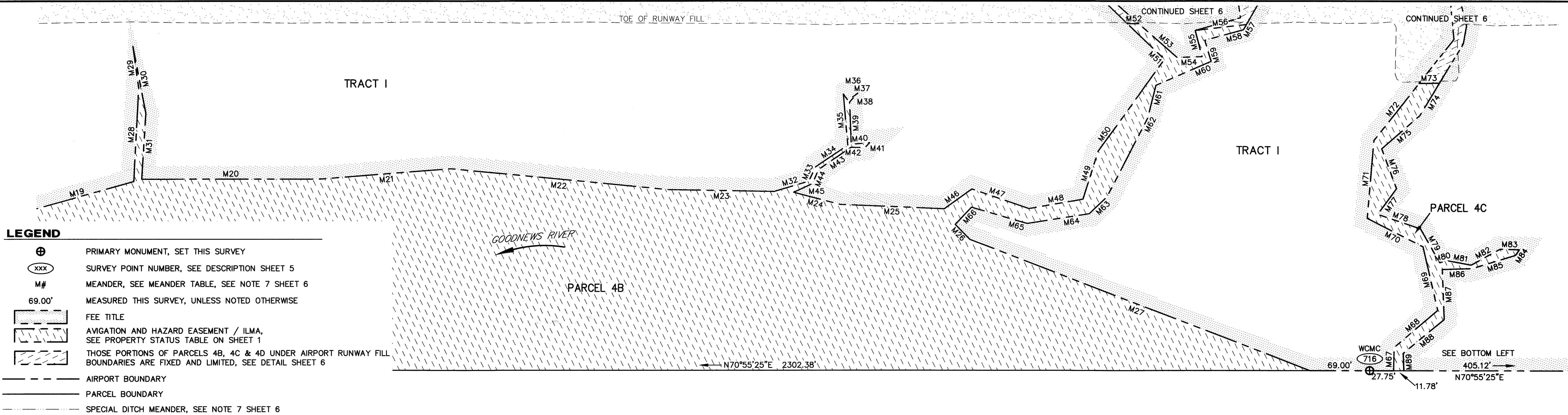
BETHEL RECORDING DISTRICT  
STATE BUSINESS - NO FEE



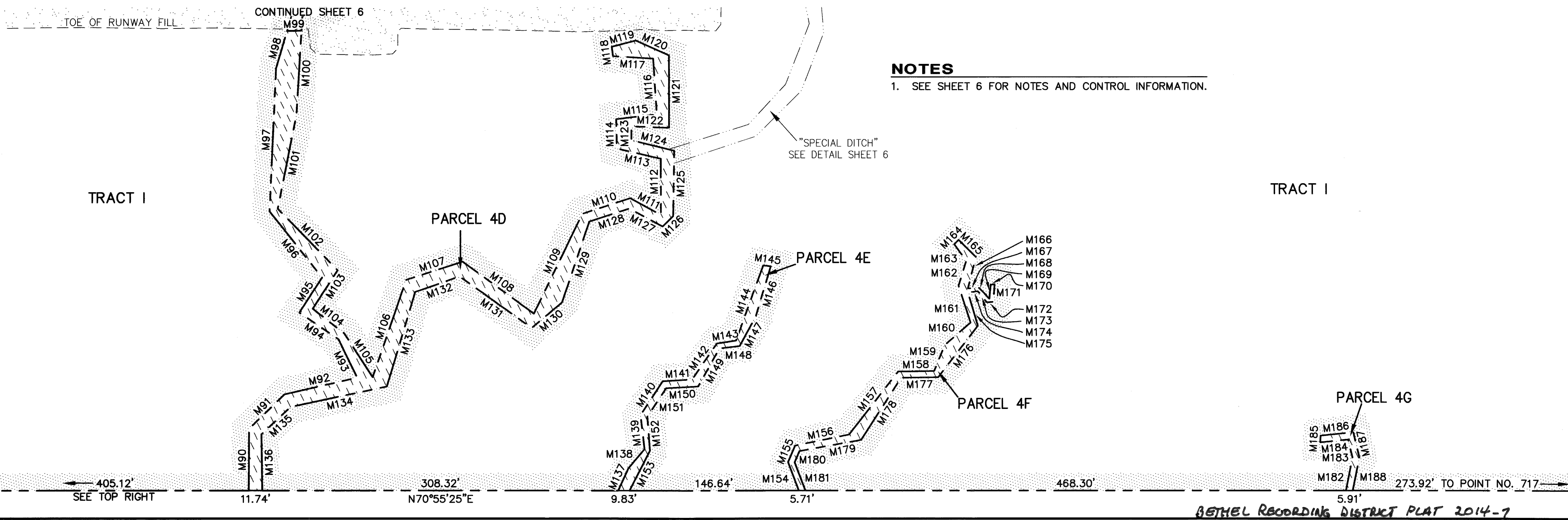
STATE OF ALASKA  
DEPARTMENT OF TRANSPORTATION  
&  
PUBLIC FACILITIES  
RIGHT-OF-WAY ACQUISITION PLAT  
GOODNEWS AIRPORT  
PROJECT No. 51349  
WITHIN PROTRACTED SECTIONS 21, 22, & 28  
T12S, R73W,  
SEWARD MERIDIAN, ALASKA

DRAWN: CAW SURVEY DATE: JULY 2012 SCALE: 1" = 60' SHEET: 2 of 6  
CHECKED: TDM DRAWN DATE: 11/01/12 FILE NO. PA20130036





MEANDER LINE TABLE																							
LINE #	BEARING	LENGTH	LINE #	BEARING	LENGTH	LINE #	BEARING	LENGTH	LINE #	BEARING	LENGTH	LINE #	BEARING	LENGTH	LINE #	BEARING	LENGTH	LINE #	BEARING	LENGTH	LINE #	BEARING	LENGTH
M19	N55°16'26"E	408.42'	M40	N66°29'08"E	21.38'	M61	S04°53'44"E	39.04'	M82	N42°02'10"E	38.18'	M103	S13°44'48"W	39.78'	M124	N84°31'37"E	38.17'	M145	N78°25'25"E	6.64'	M166	S04°52'46"E	28.12'
M20	N70°50'42"E	206.32'	M41	S25°55'21"W	7.82'	M62	S08°15'00"W	101.82'	M83	N72°12'13"E	22.47'	M104	S71°07'53"E	34.62'	M125	S18°06'53"E	56.62'	M146	S02°11'35"E	45.97'	M167	N68°55'21"E	9.78'
M21	N66°21'12"E	152.27'	M42	S72°17'47"W	15.99'	M63	S26°51'25"W	28.50'	M84	S14°59'44"W	7.88'	M105	S52°02'49"E	45.12'	M126	S25°53'24"W	12.79'	M147	S09°37'27"W	28.52'	M168	S62°01'39"E	12.87'
M22	N76°23'17"E	251.81'	M43	S36°42'21"W	45.44'	M64	S61°51'24"W	72.79'	M85	S53°54'34"W	52.76'	M106	N00°03'00"E	89.16'	M127	N80°55'36"W	32.81'	M148	S64°30'39"W	17.64'	M169	N14°01'32"W	12.25'
M23	N71°55'16"E	123.11'	M44	S04°10'08"W	17.51'	M65	S87°04'38"W	66.93'	M86	S69°14'36"W	34.38'	M107	N53°02'58"E	51.41'	M128	S52°49'15"W	36.45'	M149	S10°12'45"W	37.70'	M170	N62°00'03"E	3.37'
M24	N85°38'47"E	55.50'	M45	S46°05'43"W	24.01'	M66	S24°36'05"W	27.42'	M87	S21°11'42"E	58.06'	M108	S72°53'48"E	76.40'	M129	S00°22'04"E	73.78'	M150	S67°49'33"W	27.79'	M171	S16°17'00"E	15.30'
M25	N73°16'28"E	120.62'	M46	N35°13'05"E	39.46'	M67	N17°53'48"W	26.75'	M88	S31°22'00"W	61.57'	M109	N06°53'08"E	96.09'	M130	S30°43'47"W	34.35'	M151	S14°26'23"W	29.62'	M172	S67°09'57"W	5.93'
M26	S63°17'31"E	24.03'	M47	N89°54'24"E	69.76'	M68	N30°29'20"E	66.40'	M89	S21°08'57"E	20.05'	M110	N52°49'15"E	43.57'	M131	N73°30'42"W	76.82'	M152	S23°29'10"E	29.77'	M173	N58°18'01"W	12.30'
M27	S88°00'59"E	421.36'	M48	N60°48'53"E	63.36'	M69	N32°00'32"W	75.57'	M90	N18°50'20"W	53.34'	M111	S80°55'36"E	30.20'	M132	S51°32'32"W	40.73'	M153	S08°09'41"W	38.67'	M174	S62°41'16"W	8.50'
M28	N16°08'10"W	107.63'	M49	N01°29'59"W	58.13'	M70	N82°03'13"W	72.34'	M91	N26°40'52"E	43.02'	M112	N19°14'13"W	48.61'	M133	S02°16'10"E	85.47'	M154	N39°52'28"W	26.12'	M175	S35°40'19"E	29.82'
M29	N27°01'05"W	49.26'	M50	N16°44'00"E	130.60'	M71	N14°08'20"W	90.44'	M92	N58°05'53"E	64.49'	M113	S83°35'17"W	39.06'	M134	S59°02'33"W	85.08'	M155	N04°05'51"E	15.61'	M176	S18°32'06"W	56.26'
M30	S30°08'32"E	79.24'	M51	N65°11'20"W	59.43'	M72	N19°19'32"E	83.69'	M93	N45°06'28"W	37.05'	M114	N20°02'56"W	25.53'	M135	S27°41'54"W	34.82'	M156	N59°19'15"E	47.65'	M177	S70°07'49"W	32.13'
M31	S15°31'09"E	76.08'	M52	N70°55'50"E	13.08'	M73	N69°59'24"E	23.59'	M94	N74°48'59"W	40.99'	M115	N63°47'17"E	35.34'	M136	S19°58'34"E	48.67'	M157	N18°50'07"E	69.23'	M178	S13°42'31"W	64.10'
M32	N54°27'32"E	41.64'	M53	S67°41'11"E	59.03'	M74	S12°15'09"W	43.46'	M95	N13°59'38"E	36.22'	M116	N22°43'16"W	48.45'	M137	N05°40'28"E	21.34'	M158	N70°07'49"E	31.17'	M179	S60°34'26"W	54.23'
M33	N06°16'48"E	18.13'	M54	N69°13'11"E	28.90'	M75	S29°45'48"W	58.48'	M96	N57°33'18"W	73.00'	M117	S74°13'58"W	34.85'	M138	N21°16'32"E	21.52'	M159	N03°17'37"E	24.39'	M180	S04°05'51"W	10.58'
M34	N37°08'44"E	44.87'	M55	N33°41'55"W	31.42'	M76	S39°38'05"E	48.79'	M97	N16°29'01"W	124.04'	M118	N26°59'03"W	8.25'	M139	N25°54'31"W	29.67'	M160	N29°54'54"E	29.55'	M181	S39°52'28"E	26.00'
M35	N24°09'26"W	59.43'	M56	N64°19'52"E	59.66'	M77	S16°50'13"W	37.11'	M98	N02°51'35"W	33.96'	M119	N56°07'12"E	21.58'	M140	N14°07'30"E	35.28'	M161	N37°05'12"W	33.50'	M182	N07°42'56"W	28.92'
M36	S55°00'16"E	8.96'	M57	S10°55'31"W	6.93'	M78	N89°39'41"E	52.13'	M99	N69°21'00"E	12.53'	M120	S85°10'08"E	31.45'	M141	N67°28'05"E	25.50'	M162	N01°54'00"W	22.64'	M183	N32°43'09"W	16.20'
M37	N35°18'45"E	14.03'	M58	S55°30'17"W	46.29'	M79	S48°37'09"E	45.12'	M100	S15°38'59"E	73.37'	M121	S19°07'43"E	63.05'	M142	N15°25'04"E	37.75'	M163	N55°04'47"W	17.64'	M184	S65°03'04"W	24.29'
M38	S23°12'49"W	13.97'	M59	S35°41'55"E	25.51'	M80	N57°41'31"E	9.92'	M101	S07°48'40"E	82.95'	M122	S72°45'42"W	32.74'	M143	N62°42'33"E	16.86'	M164	N25°07'19"E	5.34'	M185	N16°06'08"W	5.80'
M39	S21°21'40"E	48.72'	M60	S47°32'53"W	69.54'	M81	N81°39'05"E	27.07'	M102	S63°23'18"E	74.19'	M123	S19°23'48"E	11.91'	M144	N00°50'22"E	69.31'	M165	S64°35'34"E	20.98'	M186	N64°42'45"E	28.45'
																		M187	S32°43'09"E	22.65'			
																		M188	S07°42'56"E	29.04'			

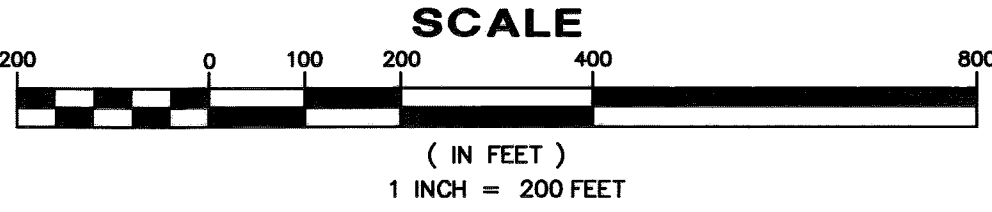
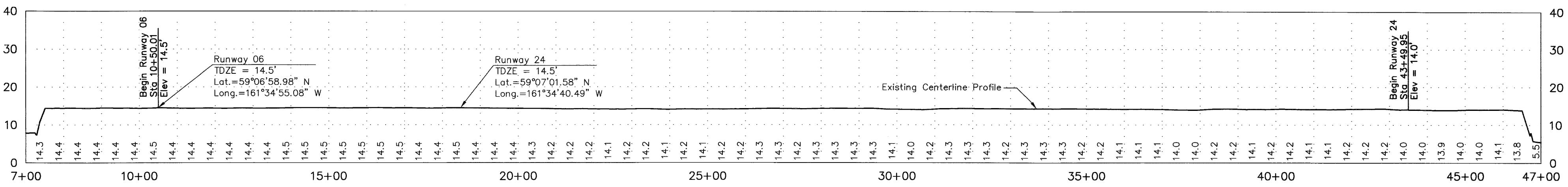


BETHEL RECORDING DISTRICT STATE BUSINESS - NO FEE	<b>STATE OF ALASKA</b> <b>DEPARTMENT OF TRANSPORTATION</b> & <b>PUBLIC FACILITIES</b> <b>RIGHT-OF-WAY ACQUISITION PLAT</b> <b>GOODNEWS AIRPORT</b> PROJECT No. 51349 WITHIN PROTRACTED SECTIONS 21, 22, & 28 T12S, R73W, SEWARD MERIDIAN, ALASKA
DRAWN: CAW CHECKED: TDM	SURVEY DATE: JULY 2012 DRAWN DATE: 11/01/12
SCALE: 1" = 60' FILE NO. PA20130036	SHEET: 3 of 6

LEGEND

- PRIMARY CENTERLINE MONUMENT, SET THIS SURVEY
- SURVEY POINT NUMBER, SEE DESCRIPTION SHEET 5
- OBSTRUCTION NUMBER, SEE HEIGHT CHART
- MEASURED THIS SURVEY
- TOUCHDOWN ZONE ELEVATION
- OVERHEAD WOOD UTILITY POLE
- TAXIWAY EDGE LIGHT WITH REFLECTIVE CONE
- THRESHOLD LIGHT WITH REFLECTIVE CONE
- RUNWAY EDGE LIGHT WITH REFLECTIVE CONE
- ROTATING BEACON
- LIGHTED WIND CONE
- SEGMENTED CIRCLE
- AIRPORT BOUNDARY
- PARCEL BOUNDARY
- RUNWAY CENTERLINE
- SPECIAL DITCH MEANDER, SEE NOTE 7 SHEET 2

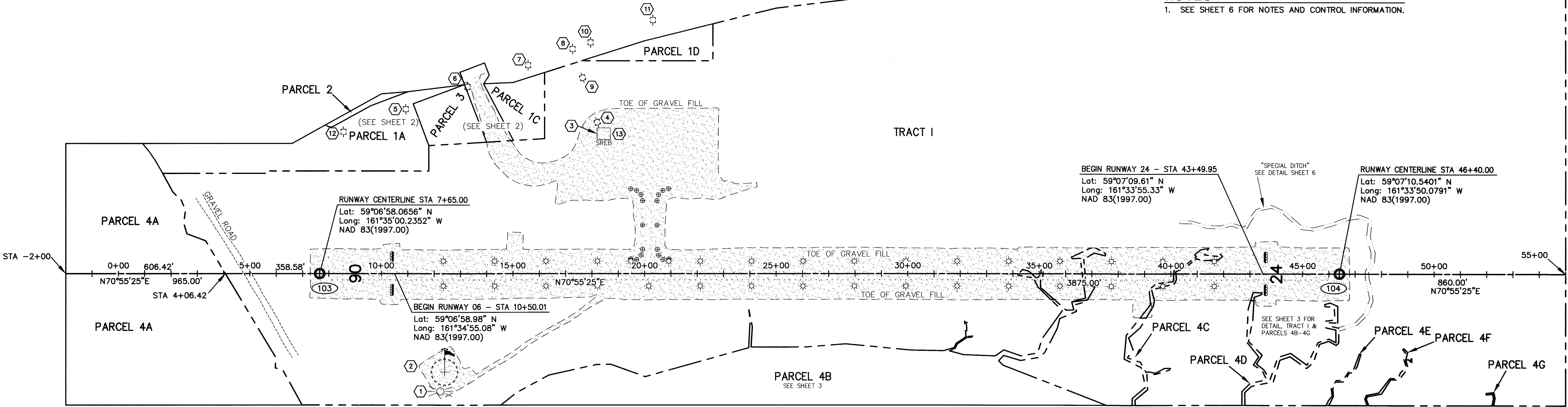
RUNWAY CENTERLINE PROFILE



MAGNETIC DECLINATION  
13°06' EAST, JULY 2012, NOAA

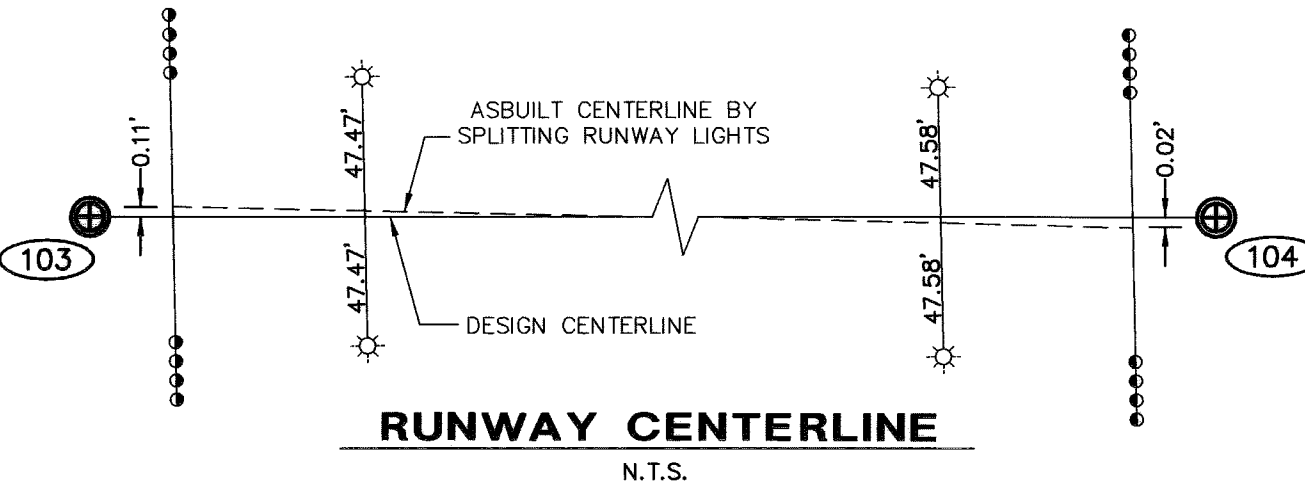
NOTES

- 1. SEE SHEET 6 FOR NOTES AND CONTROL INFORMATION.



HEIGHT CHART

NUMBER	OBSTRUCTION	LATITUDE (N)	LONGITUDE (W)	ELEVATION
1	TOP OF ROTATING BEACON	59°06'55.375"	161°34'49.117"	42.3'
2	TOP OF LIGHTED WINDSOCK	59°06'56.108"	161°34'49.279"	35.0'
3	TOP OF ANTENNA ON SREB	59°07'06.414"	161°34'44.480"	50.4'
4	TOP OF WOOD UTILITY POLE	59°07'06.819"	161°34'44.736"	53.2'
5	TOP OF WOOD UTILITY POLE	59°07'04.946"	161°34'58.220"	72.3'
6	TOP OF WOOD UTILITY POLE	59°07'06.490"	161°34'54.508"	79.7'
7	TOP OF WOOD UTILITY POLE	59°07'08.004"	161°34'50.850"	86.9'
8	TOP OF WOOD UTILITY POLE	59°07'09.122"	161°34'48.180"	95.7'
9	TOP OF WOOD UTILITY POLE	59°07'08.220"	161°34'46.803"	89.0'
10	TOP OF WOOD UTILITY POLE	59°07'09.575"	161°34'47.093"	97.9'
11	TOP OF WOOD UTILITY POLE	59°07'11.123"	161°34'43.345"	103.3'
12	TOP OF WOOD UTILITY POLE	59°07'03.376"	161°35'01.967"	60.9'
13	TOP OF SREB	59°07'06.410"	161°34'44.481"	44.4'



BETHEL RECORDING DISTRICT  
STATE BUSINESS - NO FEE

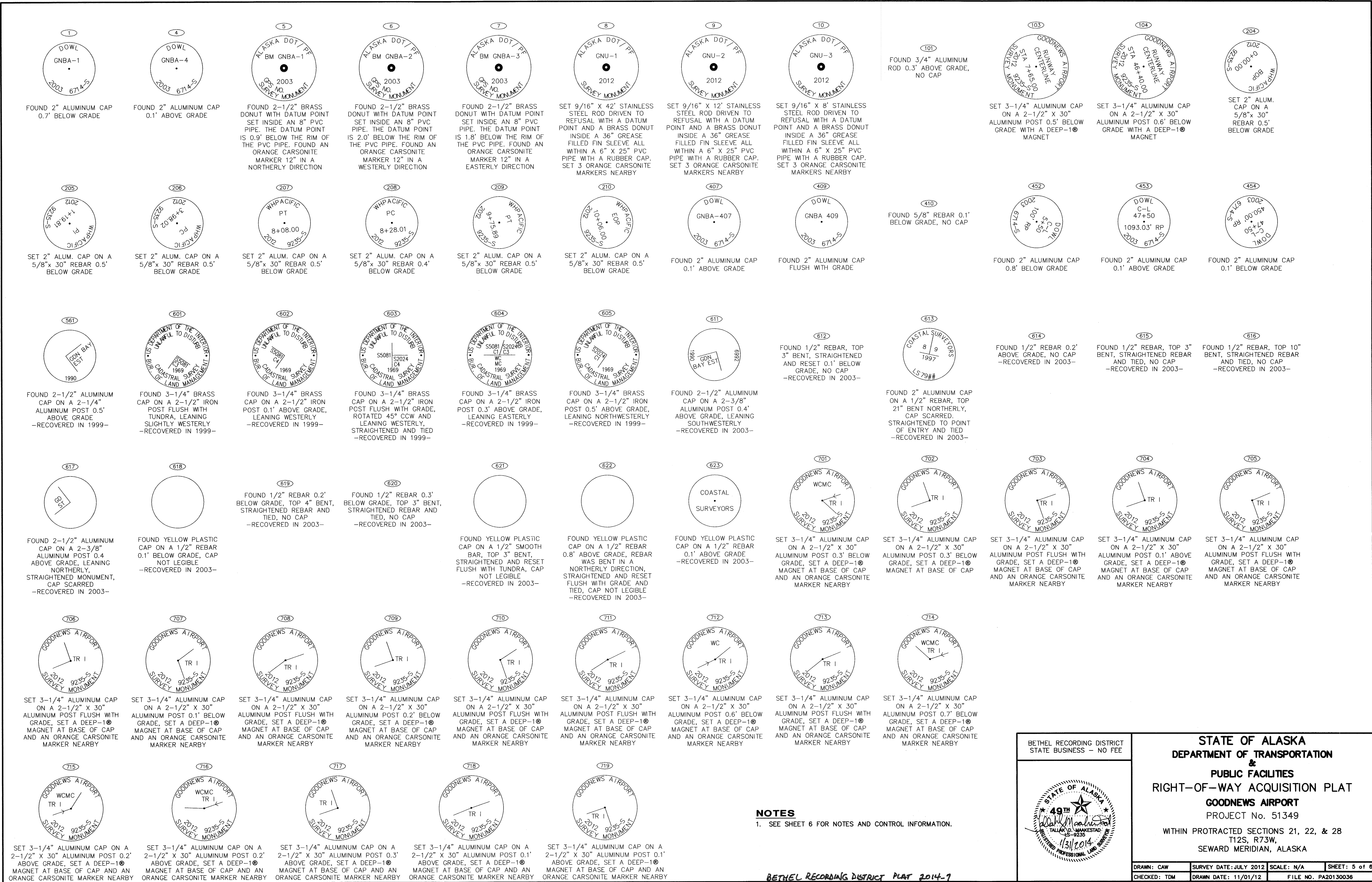


STATE OF ALASKA  
DEPARTMENT OF TRANSPORTATION  
&  
PUBLIC FACILITIES  
RIGHT-OF-WAY ACQUISITION PLAT  
GOODNEWS AIRPORT  
PROJECT No. 51349  
WITHIN PROTRACTED SECTIONS 21, 22, & 28  
T12S, R73W,  
SEWARD MERIDIAN, ALASKA

DRAWN: CAW	SURVEY DATE: JULY 2012	SCALE: 1" = 200'	SHEET: 4 of 6
CHECKED: TDM	DRAWN DATE: 11/01/12	FILE NO. PA20130036	

BETHEL RECORDING DISTRICT PLAT 2014-7





NOTES  
1. SEE SHEET 6 FOR NOTES AND CONTROL INFORMATION.

BETHEL RECORDING DISTRICT PLAT 2014-7

BETHEL RECORDING DISTRICT  
STATE BUSINESS - NO FEE

STATE OF ALASKA  
49th  
TALLAK D. MAKESTAD  
11/31/2014  
REGISTERED PROFESSIONAL LAND SURVEYOR

STATE OF ALASKA  
DEPARTMENT OF TRANSPORTATION  
&  
PUBLIC FACILITIES  
RIGHT-OF-WAY ACQUISITION PLAT  
GOODNEWS AIRPORT  
PROJECT No. 51349  
WITHIN PROTRACTED SECTIONS 21, 22, & 28  
T12S, R73W,  
SEWARD MERIDIAN, ALASKA

DRAWN: CAW  
CHECKED: TDM

SURVEY DATE: JULY 2012  
DRAWN DATE: 11/01/12

SCALE: N/A  
FILE NO. PA20130036

SHEET: 5 of 6

Page 5 of 6



MONUMENTATION						
POINT	RUNWAY CENTERLINE		ACCESS ROAD CENTERLINE		LOCAL NORTHING	LOCAL EASTING
	STATION	OFFSET	STATION	OFFSET		
204	13+09.03	850.95 Lt	0+00.00	0.00	51052.2871	20439.2362
205	13+50.93	738.70 Lt	1+19.81	0.00	50959.9021	20515.5226
206	14+55.28	480.80 Lt	3+98.02	0.00	50750.2681	20698.4219
207	17+63.32	505.20 Lt	8+08.00	0.00	50873.9986	20981.5736
208	17+67.81	524.69 Lt	8+28.01	0.00	50893.8908	20979.4461
209	18+75.00	610.00 Lt	9+75.89	0.00	51009.5479	21052.8713
210	19+05.11	610.00 Lt	10+06.00	0.00	51019.3899	21081.3312
561	13+53.48	1145.38 Lt	—	—	51345.0778	20385.0121
601	2+37.51	1674.81 Lt	—	—	51480.7025	19157.3008
602	3+87.51	1465.12 Lt	—	—	51331.5507	19367.5924
603	3+05.35	1406.44 Lt	—	—	51249.2472	19309.1197
604	-1+76.65	1062.24 Lt	—	—	50766.4162	18966.0907
605	4+46.81	1208.70 Lt	—	—	51108.5919	19507.4390
611	18+56.36	1313.10 Lt	—	—	51667.9409	20805.4656
612	26+09.16	1179.27 Lt	—	—	51787.5011	21560.6575
613	25+36.13	1162.59 Lt	—	—	51747.8689	21497.0960
614	24+62.84	1145.72 Lt	—	—	51707.9671	21433.3472
615	23+16.61	1112.18 Lt	—	—	51628.4830	21306.1073
616	21+70.46	1078.89 Lt	—	—	51549.2546	21178.8589
617	19+51.12	1028.32 Lt	—	—	51429.7688	20988.0904
618	13+56.53	788.62 Lt	0+75.00	22.71 Lt	51008.9125	20504.4991
619	11+50.78	710.82 Lt	0+75.93	197.27 Rt	50868.1351	20335.4690
620	11+02.30	692.52 Lt	0+76.12	249.08 Rt	50834.9926	20295.6388
621	11+79.56	487.49 Lt	2+88.42	253.08 Rt	50666.4735	20435.6673
622	8+18.52	560.82 Lt	1+00.25	561.00 Rt	50617.7788	20070.4875
623	7+81.82	579.41 Lt	0+70.00	588.88 Rt	50623.3565	20029.7248
701	2+98.15	381.00 Lt	—	—	50277.7641	19637.4553
702	5+60.00	381.00 Lt	—	—	50363.3453	19884.9295
703	5+60.00	390.00 Lt	—	—	50371.8510	19881.9880
704	11+79.79	390.00 Lt	3+78.87	289.44 Rt	50574.4143	20467.7381
705	11+79.79	487.53 Lt	2+88.46	252.86 Rt	50666.5863	20435.8633
706	16+20.03	513.38 Lt	8+67.55	130.27 Lt	50834.9022	20843.4820
707	16+20.03	765.17 Lt	8+91.65	257.87 Lt	51072.8652	20761.1900
708	17+61.01	810.00 Lt	9+37.13	220.30 Lt	51161.3084	20879.7722
709	22+60.00	810.00 Lt	—	—	51324.3933	21351.3631
710	22+60.00	950.48 Lt	—	—	51457.1587	21305.4504
711	25+00.00	1010.00 Lt	—	—	51591.8488	21512.8177
712	28+51.07	1052.13 Lt	—	—	51746.4024	21830.8382
713	35+00.00	1250.00 Lt	—	—	52145.4966	22379.4630
714	7+98.66	500.00 Rt	—	—	49608.7261	20398.4157
715	12+33.59	500.00 Rt	—	—	49750.8737	20809.4624
716	38+24.97	500.00 Rt	—	—	50597.8086	23258.5344
717	55+00.00	500.00 Rt	—	—	51145.2551	24841.5794
718	40+00.00	1275.00 Lt	—	—	52332.5376	22843.8343
719	55+00.00	1275.00 Lt	—	—	52822.7791	24261.4602

SURVEY CONTROL POINTS					
POINT	RUNWAY CENTERLINE		LOCAL NORTHING	LOCAL EASTING	ELEVATION
	STATION	OFFSET			
1	4+97.42	73.28 Lt	50052.0655	19926.3579	—
4	49+94.60	229.99 Lt	51669.9758	24125.3541	—
8	17+11.71	344.65 Lt	50705.4069	20985.2735	16.20
9	30+74.82	765.98 Lt	51549.0993	22135.8267	85.63
10	40+07.66	798.02 Lt	51884.2566	23006.9608	85.50
101	5+50.00	0.00	50000.0000	20000.0000	—
103	7+65.00	0.00	50070.2680	20203.1930	—
104	46+40.00	0.00	51336.7252	23865.3933	—
407	54+44.34	245.61 Lt	51831.7222	24545.2901	—
409	24+84.21	1105.45 Lt	51676.8928	21466.6985	—
410	18+93.03	938.72 Lt	51326.1102	20962.4779	—
452	4+83.09	74.32 Lt	50048.3654	19912.4741	—
453	44+87.01	1208.13 Lt	52428.5091	23325.9566	—
454	46+40.22	583.62 Lt	51888.3662	23674.8615	—

VERTICAL CONTROL POINTS					
POINT	RUNWAY CENTERLINE		LOCAL NORTHING	LOCAL EASTING	ELEVATION
	STATION	OFFSET			
5	8+88	433 Lt	50520	20178	22.455
6	26+58	476 Lt	51139	21837	33.794
7	44+13	577 Lt	51808	23462	28.142

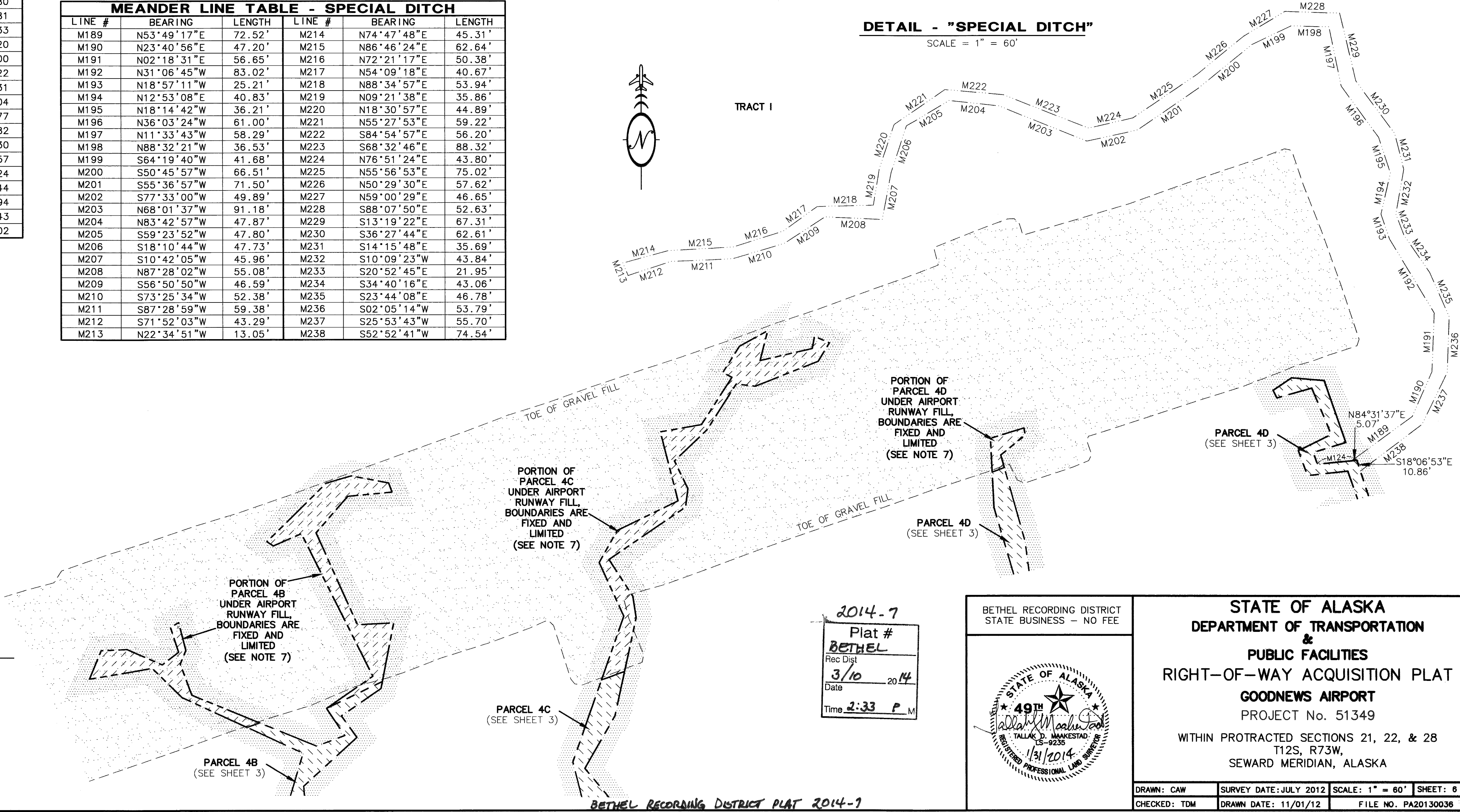
LEGEND

M#	MEANDER, SEE MEANDER TABLE THIS SHEET, SEE NOTE 7 THIS SHEET
	FEE TITLE
	AVIGATION AND HAZARD EASEMENT / ILMA, SEE PROPERTY STATUS TABLE ON SHEET 1
	THOSE PORTIONS OF PARCELS 4B, 4C & 4D UNDER AIRPORT RUNWAY FILL BOUNDARIES ARE FIXED AND LIMITED, SEE NOTE 7 THIS SHEET
	AIRPORT BOUNDARY
	SPECIAL DITCH MEANDER, SEE NOTE 7 THIS SHEET

SURVEY NOTES

- THE INFORMATION SHOWN HEREON IS BASED ON A FIELD SURVEY PERFORMED BY WHPACIFIC, INC., JULY 5, 2012 THROUGH JULY 14, 2012, AND IS ALSO BASED ON A FIELD SURVEY PERFORMED BY DOWL HKM FROM SEPTEMBER 15, 2003 THROUGH OCTOBER 5, 2003 AND SEPTEMBER 26, 1999 THROUGH OCTOBER 4, 1999. THE INFORMATION DOWL HKM GENERATED FOR THIS PROJECT WAS SUPPLIED TO WHPACIFIC BY THE ALASKA DEPARTMENT OF TRANSPORTATION & PUBLIC FACILITIES (AKDOT&PF).
- HORIZONTAL CONTROL POINTS AND MONUMENT POSITIONS WERE ESTABLISHED FOR THIS PROJECT USING LOCAL GPS VECTORS. ALL WORK WAS DONE USING LEICA DUAL FREQUENCY GNSS (GPS/GLONASS) RECEIVERS, AND PROCESSED WITH THE BROADCAST EPHEMERIS WITHIN LEICA GEO OFFICE, VERSION 8.2.0.0. A NETWORK WAS CREATED AND ADJUSTED USING A LEAST-SQUARES ADJUSTMENT.
- THE BASIS OF BEARINGS, N 70°55'25" E, IS THE RUNWAY DESIGN CENTERLINE AS SHOWN ON THE GOODNEWS AIRPORT SURVEY CONTROL SHEET, APPENDIX B OF THE AIRPORT IMPROVEMENT PLAN SET TITLED "GOODNEWS AIRPORT, GOODNEWS BAY ALASKA, GOODNEWS AIRPORT IMPROVEMENTS, PROJECT NO. 51349, A.I.P. NO. 3-02-0107-001".
- THE BEARINGS SHOWN ARE LOCAL PLANE BEARINGS AS ORIENTED TO THE BASIS OF BEARINGS, UNLESS NOTED OTHERWISE.
- ALL DISTANCES SHOWN HEREON ARE IN U.S. SURVEY FEET UNLESS OTHERWISE NOTED. DISTANCES SHOWN ARE REDUCED TO HORIZONTAL GROUND DISTANCES.
- RUNWAY STATIONING IS BASED ON THE GOODNEWS AIRPORT SURVEY CONTROL SHEET, APPENDIX B OF THE AIRPORT IMPROVEMENT PLAN SET TITLED "GOODNEWS AIRPORT, GOODNEWS BAY ALASKA, GOODNEWS AIRPORT IMPROVEMENTS, PROJECT NO. 51349, A.I.P. NO. 3-02-0107-001".
- ALL THE MEANDER LINES SHOWN HEREON EXCEPT THE SPECIAL DITCH WERE SURVEYED IN 2003 BY TALLAK D. MAAKESTAD, PLS FOR DOWL HKM AND WERE DELINEATED IN THE RECORDED ACQUISITION DOCUMENTS. THE CURRENT RUNWAY WAS BUILT OVER PORTIONS OF PARCELS 4B, 4C AND 4D AND THIS SURVEY SHOWS THE EXTENT OF THE POST CONSTRUCTION FILL. THE BEARINGS AND DISTANCES OF ONLY THE REMAINING PORTIONS OF THE TIDAL DRAINAGES OF PARCELS 4B, 4C AND 4D ARE SHOWN HEREON. REFER TO THE ACQUISITION DOCUMENTS FOR THE BEARINGS AND DISTANCES OF THE PORTIONS OF PARCELS 4B, 4C AND 4D THAT ARE SHOWN HEREON AS LYING UNDER THE AIRPORT RUNWAY WITH BOUNDARIES THAT ARE FIXED AND LIMITED. THE SPECIAL DITCH SHOWN HEREON IS A MAN-MADE TIDAL DRAINAGE FEATURE THAT IS NOT A RIPARIAN BOUNDARY AND REMAINS A PART OF TRACT I. ALL OTHER MEANDERS SHOWN ARE RIPARIAN BOUNDARIES, THE BEARINGS AND DISTANCES APPROXIMATE THE MEAN HIGH WATER LINE SURVEYED ON THE GROUND, THEN WERE GENERALIZED FOR MAPPING PURPOSES, AND ARE SUBJECT TO CHANGE OVER TIME.
- ALL PROTRACTED RECTANGULAR LINES SHOWN HEREON WERE COMPUTED BY AN ALASKA TOWNSHIP PROTRACTION PROGRAM DEVELOPED FROM THE FORMULAE GIVEN IN THE U.S. DEPARTMENT OF THE INTERIOR, BUREAU OF LAND MANAGEMENT, MANUAL OF SURVEYING INSTRUCTIONS, 1973 EDITION.
- PROJECT ELEVATIONS ARE BASED UPON GOODNEWS AIRPORT SURVEY CONTROL DIAGRAM RECORDED AS PLAT 2004-5, WITHIN THE BETHEL RECORDING DISTRICT.
- THE RIGHT-OF-WAY ACQUISITION OF THE PARCELS SHOWN HEREON, AND THE AIRPORT IMPROVEMENTS HAVE BEEN COMPLETED.

MEANDER LINE TABLE - SPECIAL DITCH					
LINE #	BEARING	LENGTH	LINE #	BEARING	LENGTH
M189	N53°49'17"E	72.52'	M214	N74°47'48"E	45.31'
M190	N23°40'56"E	47.20'	M215	N86°46'24"E	62.64'
M191	N02°18'31"E	56.65'	M216	N72°21'17"E	50.38'
M192	N31°06'45"W	83.02'	M217	N54°09'18"E	40.67'
M193	N18°57'11"W	25.21'	M218	N88°34'57"E	53.94'
M194	N12°53'08"E	40.83'	M219	N09°21'38"E	35.86'
M195	N18°14'42"W	36.21'	M220	N18°30'57"E	44.89'
M196	N36°03'24"W	61.00'	M221	N55°27'53"E	59.22'
M197	N11°33'43"W	58.29'	M222	S84°54'57"E	56.20'
M198	N88°32'21"W	36.53'	M223	S68°32'46"E	88.32'
M199	S64°19'40"W	41.68'	M224	N76°51'24"E	43.80'
M200	S50°45'57"W	66.51'	M225	N55°56'53"E	75.02'
M201	S55°36'57"W	71.50'	M226	N50°29'30"E	57.62'
M202	S77°33'00"W	49.89'	M227	N59°00'29"E	46.65'
M203	N68°01'37"W	91.18'	M228	S88°07'50"E	52.63'
M204	N83°42'57"W	47.87'	M229	S13°19'22"E	67.31'
M205	S59°23'52"W	47.80'	M230	S36°27'44"E	62.61'
M206	S18°10'44"W	47.73'	M231	S14°15'48"E	35.69'
M207	S10°42'05"W	45.96'	M232	S10°09'23"W	43.84'
M208	N87°28'02"W	55.08'	M233	S20°52'45"E	21.95'
M209	S56°50'50"W	46.59'	M234	S34°40'16"E	43.06'
M210	S73°25'34"W	52.38'	M235	S23°44'08"E	46.78'
M211	S87°28'59"W	59.38'	M236	S02°05'14"W	53.79'
M212	S71°52'03"W	43.29'	M237	S25°53'43"W	55.70'
M213	N22°34'51"W	13.05'	M238	S52°52'41"W	74.54'



HORIZONTAL CONTROL STATEMENT

THIS PROJECT IS LOCATED ENTIRELY WITHIN THE AKDOT&PF GOODNEWS AIRPORT COORDINATE SYSTEM. THE AKDOT&PF GOODNEWS AIRPORT COORDINATE SYSTEM IS A LOCAL SURFACE GRID COORDINATE SYSTEM IN US SURVEY FEET THAT IS CONSTRAINED TO ALASKA STATE PLANE COORDINATES, ZONE 7, NAD83(1997.00).

THE BEARINGS FOR THIS PROJECT ARE BASED UPON THE SURVEY CONTROL DIAGRAM FOR GOODNEWS AIRPORT, RECORDED ON JUNE 17, 2004, AS PLAT NO. 2004-5, WITHIN THE BETHEL RECORDING DISTRICT. THE BASIS FOR THIS COORDINATE SYSTEM IS THE PROJECT CENTERLINE STATION 5+50.00, AND HAS THE FOLLOWING COORDINATES:

NAD83(1997.00) GEODETIC COORDINATES:

LAT. = 59°06'57.37313" NORTH,  
LONG. = 161°35'04.12728" WEST,  
ELLIPSOID HEIGHT = 55.035  
ORTHOMETRIC HEIGHT = 8.288

NAD83(1997.00) ASPC ZONE 7 COORDINATES: N=1,869,041.8119, E=1,718,498.3242  
AKDOT&PF GOODNEWS AIRPORT LOCAL COORDINATES: N=50,000.0000, E=20,000.0000

CONVERSION FROM STATE PLANE, ZONE 7, NAD83(1997.00) US FEET TO LOCAL US FEET:

- SCALE STATE PLANE COORDINATES USING 100000000/99990089
- TRANSLATE RESULTING COORDINATES USING -1,819,227.07099501 N -1,698,668.66145104 E
- ROTATE COORDINATES CLOCKWISE 00°21'56.02" AT PROJECT CENTERLINE STA 5+50.00

CONVERSION FROM LOCAL US FEET TO STATE PLANE, ZONE 7, NAD83(1997.00) US FEET:

- ROTATE COORDINATES COUNTER-CLOCKWISE 00°21'56.02" AT PROJECT CENTERLINE STA 5+50.00
- TRANSLATE RESULTING COORDINATES USING +1,819,227.07099501 N +1,698,668.66145104 E
- SCALE RESULTING COORDINATES USING 0.99990089

VERTICAL CONTROL STATEMENT

THE VERTICAL DATUM IS LOCAL MEAN SEA LEVEL, AS DETERMINED BY CONTINUOUS WATER LEVEL MEASUREMENTS BY DOWL ENGINEERS FOR A 30-DAY PERIOD (SEPT. 24 - OCT. 23, 1999) USING A SUBMERSIBLE WATER LEVEL GAUGE SUBMERGED IN GOODNEWS BAY, AND THEN TRANSFERRED TO THE BENCH MARKS SHOWN HEREON, PER GOODNEWS AIRPORT SURVEY CONTROL DIAGRAM, RECORDED AS PLAT NO. 2004-5, WITHIN THE BETHEL RECORDING DISTRICT. ALL OTHER CONTROL POINT ELEVATIONS SHOWN HEREON WERE DETERMINED FROM THESE BENCH MARKS BY RUNNING DIFFERENTIAL LEVEL LOOPS.

STATE OF ALASKA  
DEPARTMENT OF TRANSPORTATION  
&  
PUBLIC FACILITIES  
RIGHT-OF-WAY ACQUISITION PLAT  
GOODNEWS AIRPORT  
PROJECT No. 51349  
WITHIN PROTRACTED SECTIONS 21, 22, & 28  
T12S, R73W,  
SEWARD MERIDIAN, ALASKA

DRAWN: CAW	SURVEY DATE: JULY 2012	SCALE: 1" = 60'	SHEET: 6 of 6
CHECKED: TDM	DRAWN DATE: 11/01/12	FILE NO.: PA20130036	