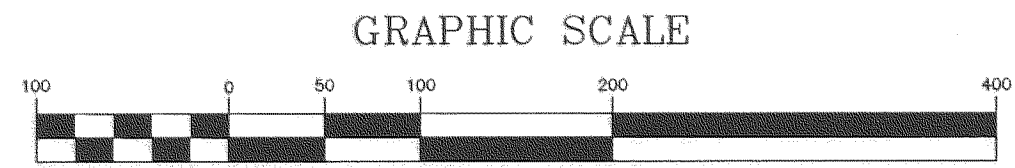
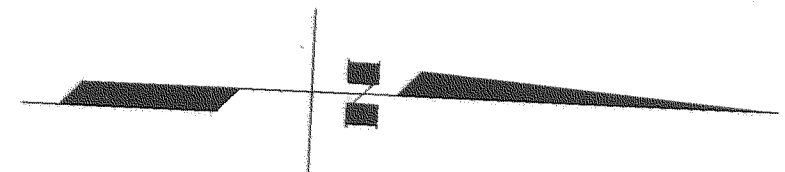


project:03\031196\Survey\topo, 1=100, 01/05/04 at 13:20 by kslp
VIEW: Full, Half
XREF: 1196BD01

MATCHLINE, SEE SHEET 3

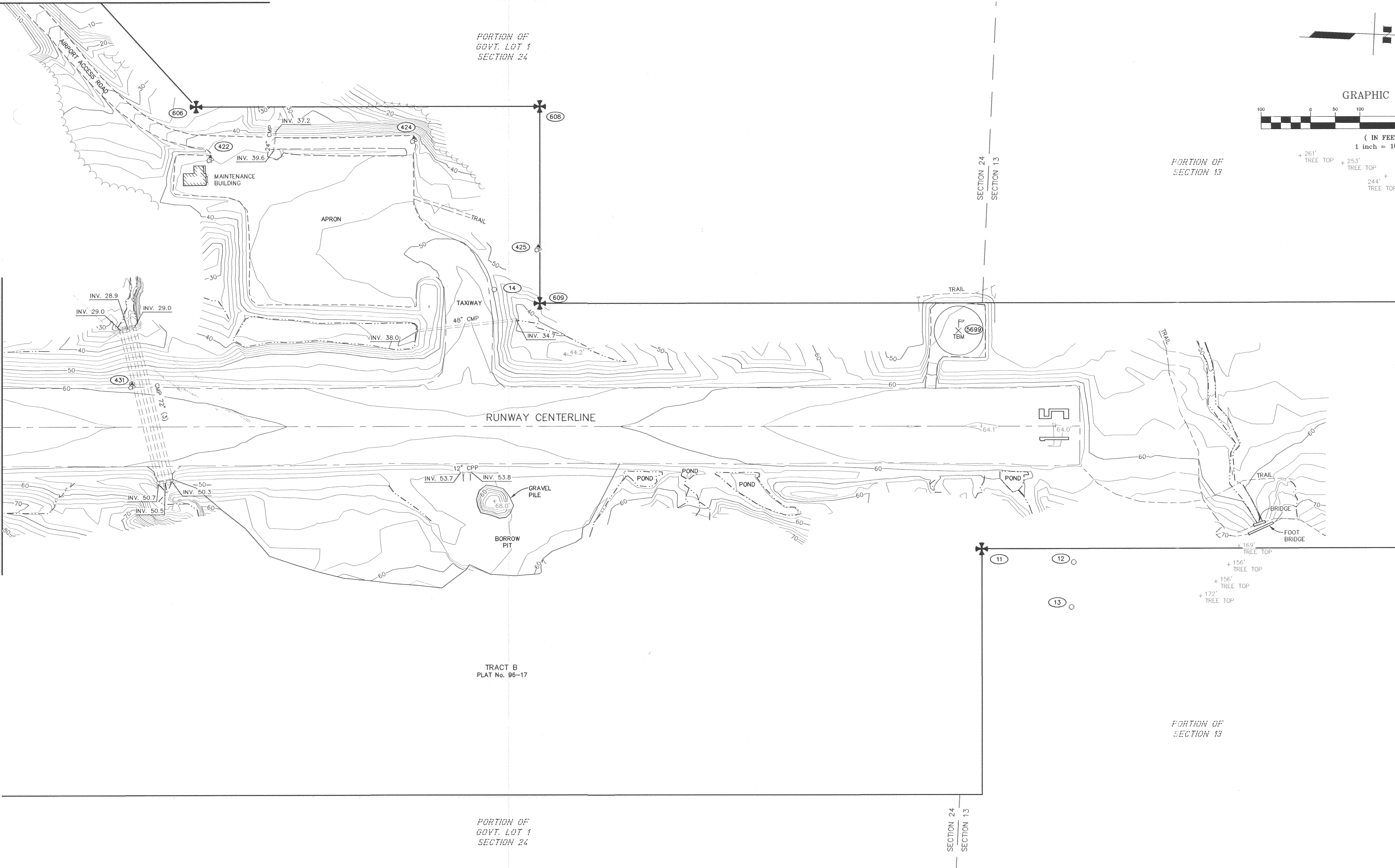
PORTION OF
GOVT. LOT 1
SECTION 24



+ 261' TREE TOP + 253' TREE TOP
+ 244' TREE TOP

PORTION OF
SECTION 13

MATCHLINE, SEE SHEET 4



MATCHLINE, SEE SHEET 6

TRACT B
PLAT No. 96-17

PORTION OF
GOVT. LOT 1
SECTION 24

PORTION OF
SECTION 13

SURVEYOR'S CERTIFICATE

I HEREBY CERTIFY THAT I AM PROPERLY REGISTERED AND LICENSED TO PRACTICE LAND SURVEYING IN THE STATE OF ALASKA, AND THAT THIS DRAWING REPRESENTS A SURVEY MADE BY ME OR UNDER MY DIRECT SUPERVISION, AND THAT THE MONUMENTS SHOWN HEREON ACTUALLY EXIST AS DESCRIBED, AND THAT ALL DIMENSIONS AND OTHER DETAILS ARE CORRECT TO THE EXTENT SHOWN HEREON.

Lendle C. Story
LENDLE C. STORY, L.S. 7843
DATE 1-5-04

BY	DATE	REVISIONS



STATE OF ALASKA
DEPARTMENT OF TRANSPORTATION
AND PUBLIC FACILITIES
CENTRAL REGION-DESIGN AND CONSTRUCTION

APPROVED: _____ DESIGN SECTION CHIEF
APPROVED: _____ PROJECT MANAGER

DATE: 12-05-03
DESIGN: DSN
DRAWN: KSLP
CHECKED: LCS

CHENEGA BAY AIRPORT
RESURFACING & LIGHTING
AKSAS PROJECT No. 56445
TOPOGRAPHIC MAPPING

SHEET
5
OF
6