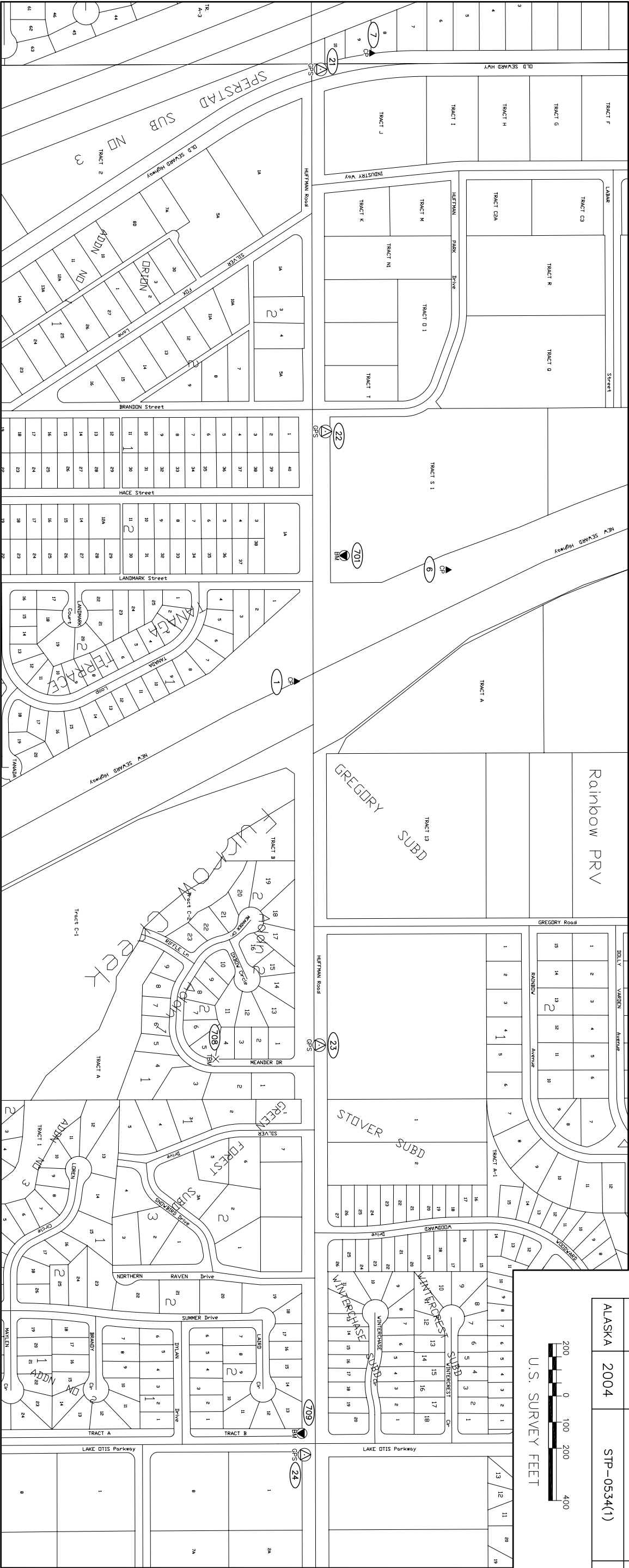


| STATE  | YEAR | PROJECT DESIGNATION | SHEET NO. | TOTAL SHEETS |
|--------|------|---------------------|-----------|--------------|
| ALASKA | 2004 | STP-0534(1)         | A3        |              |



U.S. SURVEY FEET



Horizontal Control Statement:

Coordinate System:  
This project is located entirely within the Anchorage Bowl 2000 adjustment, a U.S. Survey Foot local surface grid coordinate system developed by the Alaska Department of Transportation.

Basis of Coordinates:  
The Basis of Coordinates is NGS Station O'Malley, located near the intersection of the New Seward Highway and O'Malley Road. Said station has Anchorage Bowl 2000 coordinates of 303,939.2310 N, 353,362.5446 E.

Basis of Bearings:  
The Basis of Bearings is a local plane bearing between NGS Station O'Malley and NGS Station Loop 2 USE RM 3 1964, NGS Station Loop 2 USE RM 3 1964 bears N 01°43'26.4"E, a distance of 49,488.45 U.S. Survey Feet from NGS Station O'Malley. NGS Station Loop 2 USE RM 3 1964 has Anchorage Bowl 2000 coordinates of 353,405.2178 N, 354,851.3982 E.

Translation Parameters:  
To convert the local coordinates to NAD83 (92) State Plane Foot coordinates, translate using +2,298,868.6878 N, +1,312,517.4905 E, and scale using 0.9998910192.

Vertical Control Statement:

MOA GAAB 72, as determined by level loops performed by AKDOT between the following benchmarks:

BM MOA-14: BC on building Corrs NSH/Hufman. MOA Benchmark network book, page D-60. Elevation 159.51 feet.

BM GAAB-25: BC Abbott Loop Community School. MOA Benchmark network book, page D-39. Elevation 234.06 feet.

BM GAAB-122: BC Abbott Rd & Lake Otis Pkwy. MOA Benchmark network book, page D-38. Elevation 253.94 feet.

BM GAAB-158: BC Hufman Rd & Lake Otis Pkwy. MOA Benchmark network book, page D-66. Elevation 250.90 feet.

All other elevations were established using trigonometric leveling methods, and shall be verified in the field prior to use.

Notes:

1. Whether listed or not, all monuments or property markers, corners, or accessories, which will be disturbed or buried, shall be referenced and re-established in their original position (A.S. 19.10.260) and recorded (A.S. 34.65.040).

2. Coordinates are listed in U.S. Survey Feet.

3. Background information taken from Municipality Of Anchorage Tax-Maps is shown for orientation purposes only, and should not be used for any other means.

4. GPS Control Points were established using static network GPS techniques and Leica System 500 GPS equipment.

Horizontal Control Points

| Number | Northing     | Eastng       | Elevation | Description             |
|--------|--------------|--------------|-----------|-------------------------|
| 1      | 3004935.3941 | 3545228.8506 | 187.20    | Fd Rbr/P/C: HUFF/NSH    |
| 6      | 301074.1169  | 354102.1967  |           | Set Rbr/AC: TS OSH-1    |
| 7      | 300782.2028  | 352125.8662  |           | Set Rbr/AC: TS OSH-3    |
| 21     | 300587.6920  | 352188.1326  | 152.22    | Set Rbr/PC: TS HR-1     |
| 22     | 300606.0330  | 353573.0498  | 157.82    | Set Rbr/PC: TS HR-2     |
| 23     | 300582.2293  | 356920.3999  | 205.92    | Set Rbr/PC: TS HR-3     |
| 24     | 300525.8416  | 357486.9171  | 255.90    | Set Rbr/PC: TS HR-4     |
| 25     | 300601.1716  | 358591.2489  | 287.13    | Set Rbr/AC: HUFF 1.2 AZ |
| 26     | 300558.5596  | 361400.5424  | 366.28    | Set Rbr/PC: HUFF 1.7    |
| 501    | 303939.2311  | 353362.5447  |           | Fd BC: GPS OMALEY       |

LEGEND

- GPS Control Point
- Control Point
- BLM/BLO Monument
- Primary Centeline Monument
- Secondary Centeline Monument
- Primary Property Corner
- Secondary Property Corner
- Vertical Benchmark
- Temporary Vertical Benchmark
- Point Number

Vertical Control Points

| Number | Northing | Eastng | Elevation | Description                                     |
|--------|----------|--------|-----------|---|
| 701    | 300679   | 354048 | 179.51    | Fd BC/MOA-14; SE Cor Carrs Bldg. NSH/Hufman     |
| 708    | 300187   | 355974 | 196.64    | Set BM: SE Bolt 1st Hydrant Meander Dr. BM-Huff |
| 709    | 300516   | 357405 | 250.90    | Fd BC/Pipe [GAAB]; SW Quad. Hufman & Lake Otis  |

Surveyor's Certificate

I hereby certify that I am properly Registered and Licensed to practice Land Surveying in the State of Alaska, and that this drawing represents a survey made by me or under my direct supervision, and that the monuments shown hereon actually exist as described, and that all dimensions and other details are correct to the extent shown hereon.

Michael H. Schoder

LS-5368

01/21/2004



STATE OF ALASKA  
DEPARTMENT OF TRANSPORTATION  
&  
PUBLIC FACILITIES

Survey Control Diagram

Federal Project No.

STP-0534(1)

Hufman Rd.- Old Seward to Lake Otis

Located within Secs. 19-21, 28-30 T12N, R3W, S1/4, AK

| DRAWN | DATE       | SCALE     | CHECKED | DATE       | SHEET | OF |
|-------|------------|-----------|---------|------------|-------|----|
| RMK   | 12/23/2003 | 1" = 200' | MHS     | 01/21/2004 | 1     | 1  |