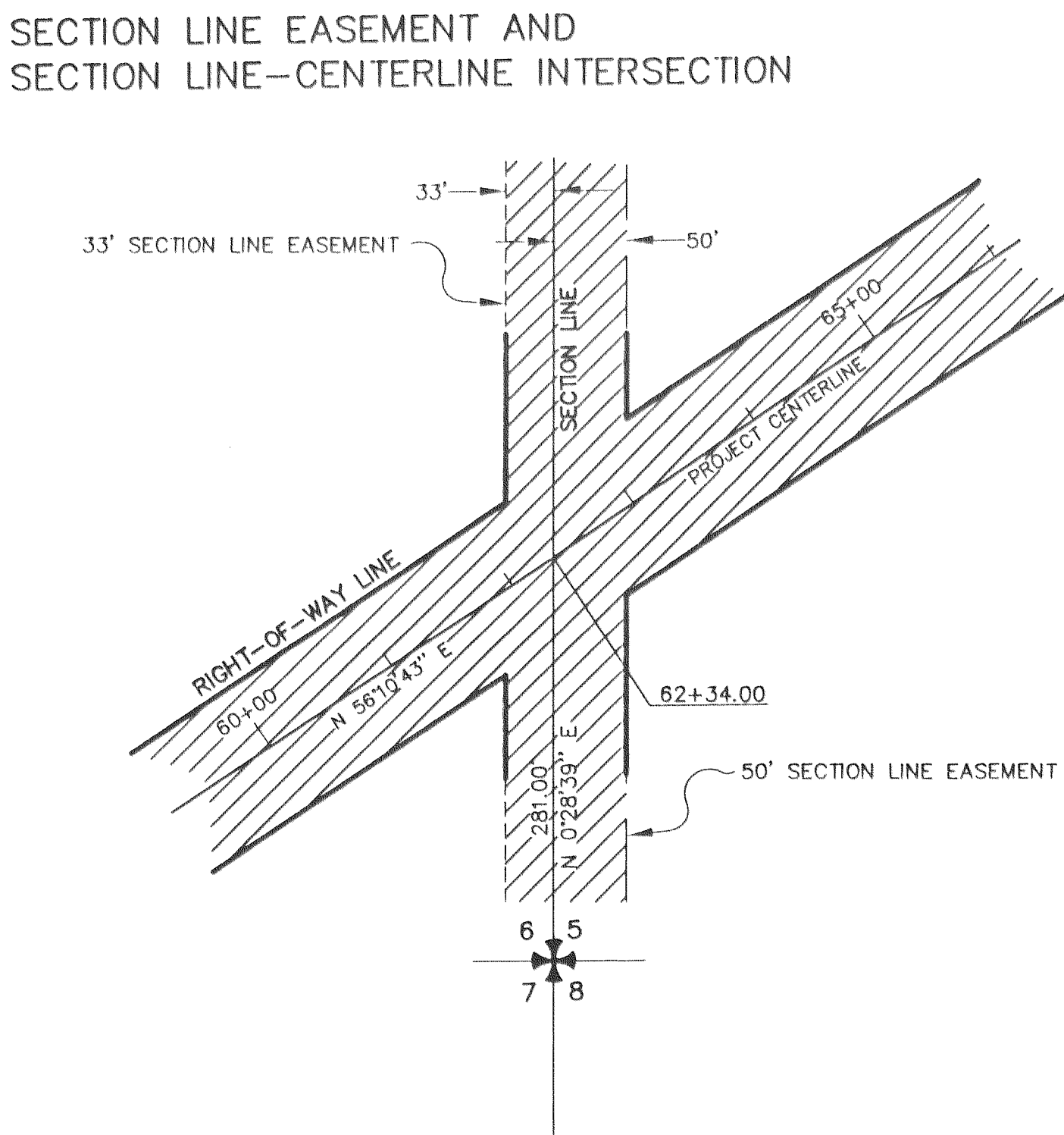


	RECOVERED	TO BE SET THIS PROJECT
GOV'T SECTION CORNER		
GOV'T 1/4 SECTION CORNER		
GOV'T 1/16 SECTION CORNER		
GOV'T SURVEY MONUMENT		
GOV'T CONTROL STA.		
PRIMARY MONUMENT [BRASS/AL CAP]		
MISC. SECONDARY CORNER		
PRIMARY CENTERLINE MONUMENT		
SECONDARY CENTERLINE MONUMENT		
CONTROL POINT		
INTERNATIONAL BOUNDARY LINE	ALASKA CANADA	
TOWNSHIP & RANGE LINE	T. 13 N. T. 12 N.	R. 2 W. R. 3 W.
SECTION OR LOT LINES		
1/4 SECTION LINE		
1/16 SECTION LINE		
CORPORATE or CITY LIMITS		



PROJECT CENTERLINE	
PROJECT RIGHT-OF-WAY LINE	
CONTROLLED ACCESS LINE	
PERMIT LINE	
EXISTING EASEMENT LINE	
RAILROAD LINE	
LIMIT OF CUT SLOPE	
LIMIT OF FILL SLOPE	
NOISE BARRIER	
FENCE	
STONE FENCE	
HEAD & WINGWALLS	
TUNNEL	
EXISTING CENTERLINE	
EXISTING ROADWAY	
MARSHLAND	
CREEKS	
RIVERS	
LAKES	
RESERVOIRS	
CHANNEL CHANGE	
DECIDUOUS TREE	
CONIFEROUS TREE	
SHRUB OR SHRUBS	
HIGHWAY MILEPOST	
RAILROAD MILEPOST	
EXISTING RIGHT-OF-WAY	
RIGHT-OF-WAY REQUIRED	
STATION EQUATIONS	

PIPELINES:	EXISTING	PROPOSED
SANITARY SEWER		
OIL		
GAS		
WATER		
STORM DRAIN		
MANHOLE		
FIRE HYDRANT		
METER		
PIPE CULVERTS		
SIDEWALK		
CONCRETE CURB		
CONCRETE CURB & GUTTER		
DRIVEWAYS, APPROACHES, & SIDEDRAINS		
BRIDGE		
RIPRAP		
UTILITY POLE		
LUMINAIRE		
UTILITY POLE WITH LUMINAIRE		
POLE ANCHOR		
TRANSMISSION TOWERS [WOOD]		
TRANSMISSION TOWERS [STEEL]		
ELECTRICAL OUTLET		
ELECTRICAL PEDESTAL		
TELEPHONE PEDESTAL		
CABLE T.V. PEDESTAL		

U.G. TELEPHONE (DIRECT BURY)	
U.G. ELECTRIC (DIRECT BURY)	
U.G. DUCT	
TELEPHONE MANHOLE	
ELECTRIC MANHOLE	
FOUNDATION	
BUILDING	
INTERMITTENT DRAINAGE	
INTERCEPTOR DITCH	
GUARD RAIL	
RETAINING WALL	
PLANTER	
VENT	
TANK VENT	
WELL	
SEPTIC	
TANKS Above Ground Below Ground	
SATELLITE DISH	
PRIVATE SIGN	
GAS PUMP	
POST	
BOULDER OR BOULDERS	
GROUND LIGHT	

THIS SURVEY DOES NOT CONSTITUTE A SUBDIVISION
AS DEFINED BY AS 40.15.900(5).

COPY

STATE OF ALASKA
DEPARTMENT OF TRANSPORTATION
&
PUBLIC FACILITIES
STP-0551(3)
53943
STANDARD LEGEND SHEET
EAGLE RIVER ROAD REHABILITATION, MP 5.3-12.6

DRAWN	DATE 11/27/2002	SCALE NTS
CHECKED MHS/ADOT	DATE 11/19/2002	SHEET 2 OF 39