

Alaska Department of Transportation & Public Facilities

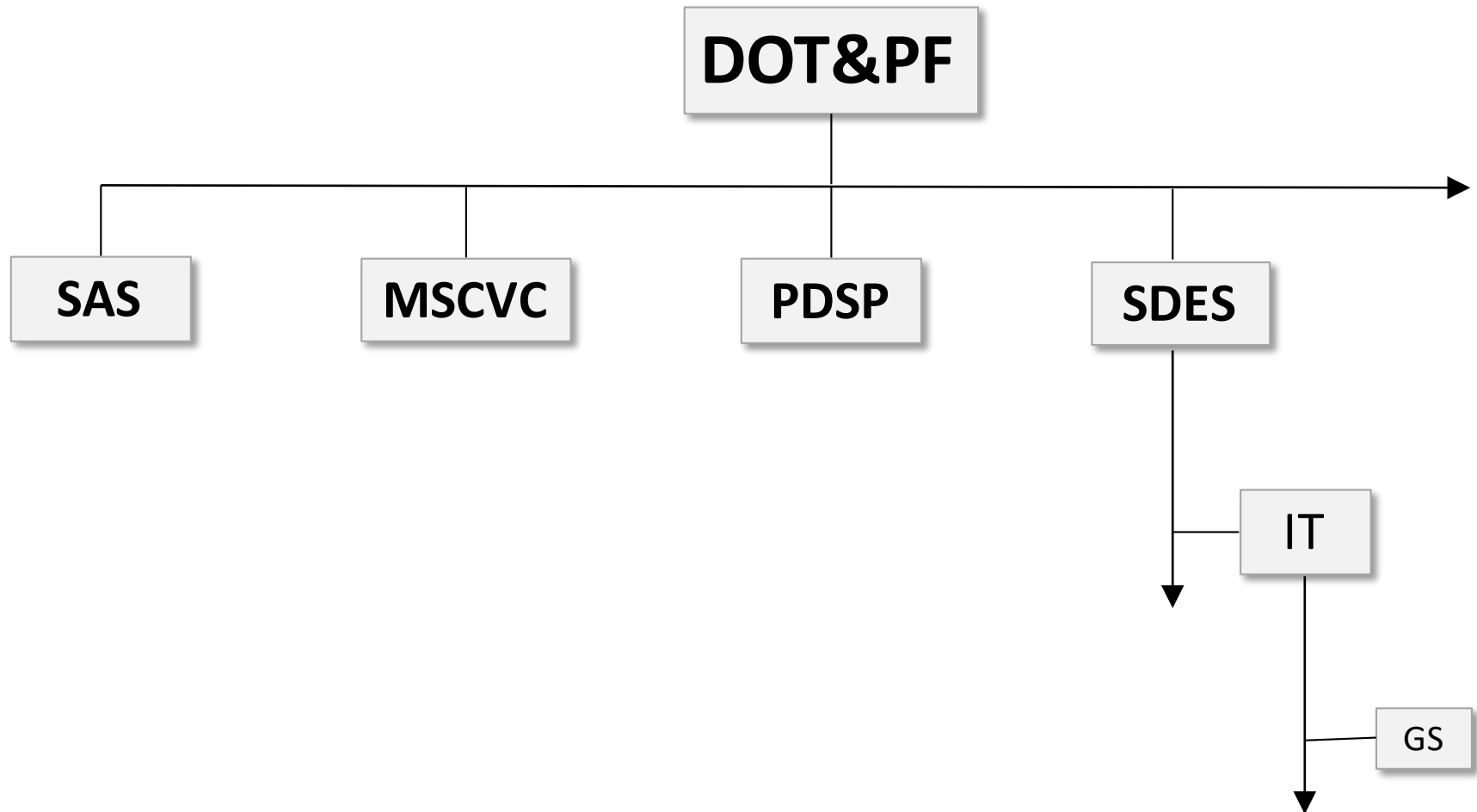
Introduction to the Geospatial Services Section and Atlas

David Oliver

August, 2020

Our mission is to *Keep Alaska Moving* through service and infrastructure.

Geospatial Services Organizational View



Geospatial Services' Staff and Roles

Kerry Kirkpatrick

- Road Network

Garry Remsberg

- Web-GIS

Sean Jordan

- Roadway Inventory

Mistee Wilson

- Roadway Inven. and GIS Support

Ryan Anderson

- Roadway Data Collection

Alicia Stevens

- ITS Coordinator (511, RWIS, etc.)

David Oliver

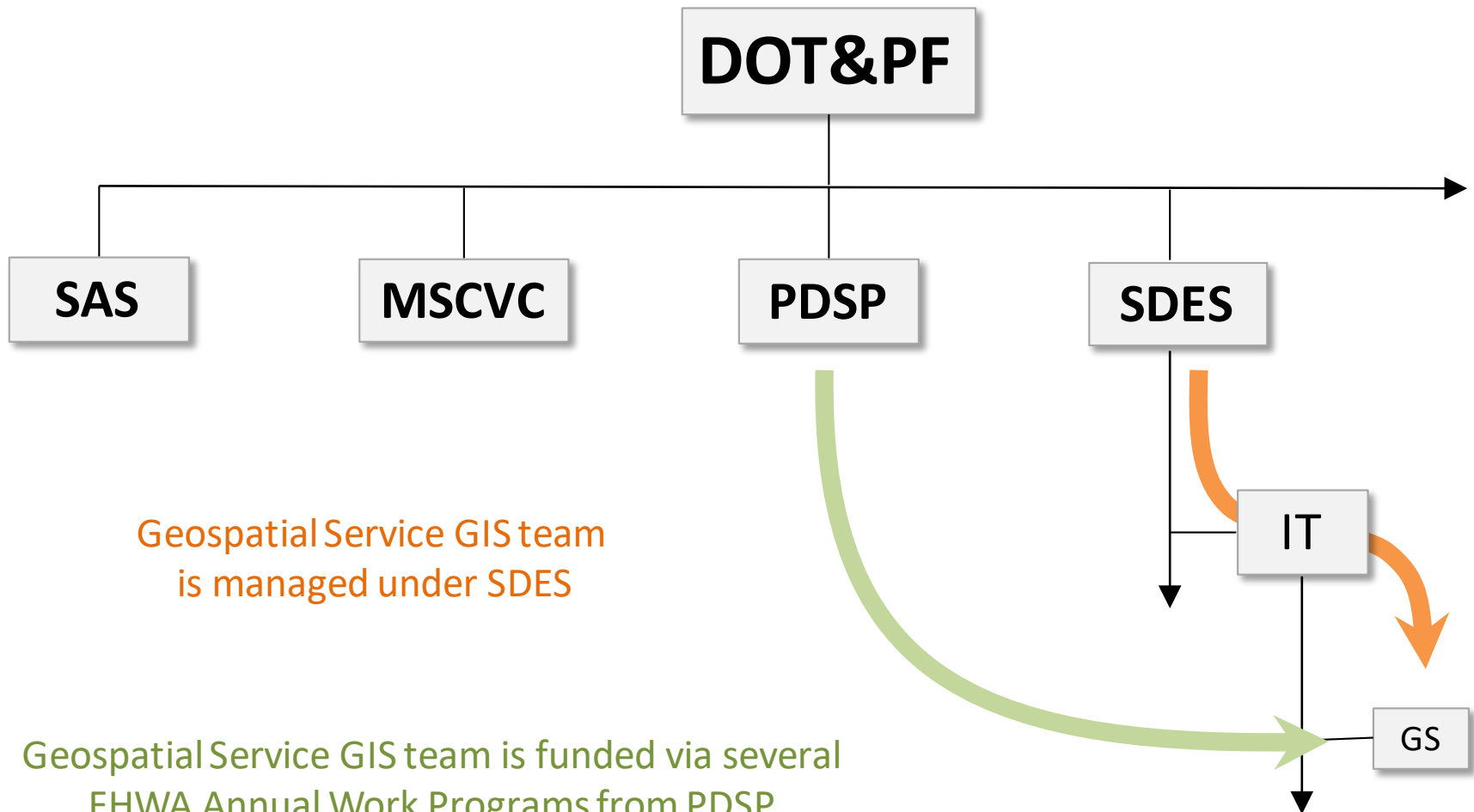
- Section Manger

Courtney Lewis

- Programmer



Geospatial Services' Management\Funding



Geospatial Services' Mission

Primary

Maintain a linear reference system based GIS and common roadway assets and attributes to support federal programs, such as:

HPMS

CPRM

STIP

FMIS

TPM

Geospatial Services' Mission

Secondary

Leverage existing GIS infrastructure (hardware, software, data, administration, expertise...) to address department needs, such as:

511/Traveler Information

Bike/Ped Facilities Mapping

Aviation GIS

ADA Curb Ramps

Seasonal Weight Restrictions

3rd Party Damage to DOT&PF Assets

GAM

Winter Maintenance Priorities

MMS QA/QC

CR Street Sweeping

Survey 123/Collector for Earthquake Response

Training and Support



Enterprise GIS License Agreement

Just entered into year 3 of a 3-year enterprise license agreement (EA) with Environmental Systems Research Incorporated (Esri). The EA provides department staff access to a wide array of GIS software and support, including:

Uncapped

- ArcGIS Desktop/Pro
 - Extensions
- ArcGIS Enterprise
 - Extensions
- ArcGIS for Aviation

Capped

- Roads and Highways Desktop/Server
- ArcGIS Online/Portal
- Drone2Map
- Insights (Ent./Online)

EA has been historically funded via AWP and/or ICAP funds
Instead of a cost sharing or a charge back mechanism



Why Atlas

STAR, RIP, and DRV

- Custom applications
- Dated Technology
- Didn't integrate well with Esri software updates

Atlas

- Replacement for RIP/STAR/DRV
- Esri COTS (stay snych'd with Esri)
- Custom like applications without programming
- Reusable tools (widgets)
- Expandable to support other business units

Atlas Demonstration



david.oliver@alaska.gov ▼

Atlas

access, create, and share GIS content

Welcome to Atlas

This is the platform for exploring and downloading GIS data, discovering and building apps, and engaging others to solve important issues. The AKDOT&PF Atlas is for new and experienced users. It brings learning together with tools and data to provide users with everything they need to get started.

New to GIS?

We provided links to introductory learning material that will help you get up to speed.

[Learn more about GIS](#)

<https://gis.dot.soa.alaska.gov/>

