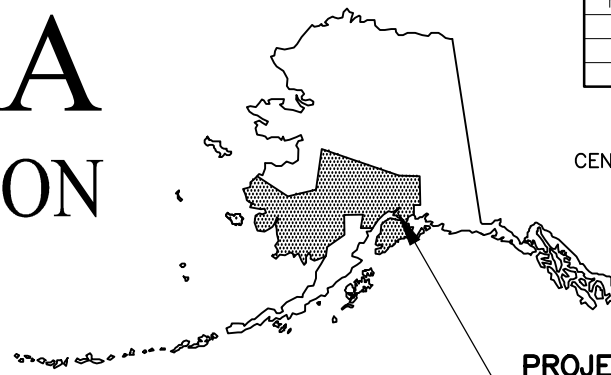


MLN
 DESIGNED BY
 CHECKED BY
 DRAFTED BY
 SCALE
 N/A
 TIME
 DATE
 2/3/2026 2:23 PM
 DRAWING LOCATION
 Z:\PROJECTS\HSIP_TUDOR RD TO PATTERSON ST CHANNELIZATION - CFHWY01073\CIV3D\EXHIBITS\TCP\01073_TCP_TTL.DWG

STATE OF ALASKA

DEPARTMENT OF TRANSPORTATION AND PUBLIC FACILITIES



NO.	DATE	REVISION	STATE	PROJECT DESIGNATION	YEAR	SHEET NO.	TOTAL SHEETS
			ALASKA	0544023/CFHWY01073	2026	01	05
ROUTE ID			2281107X000	MILEPOINT	5.184 - 5.721		
LATITUDE			61.180771	LONGITUDE	-149.755393		

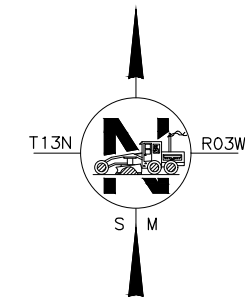
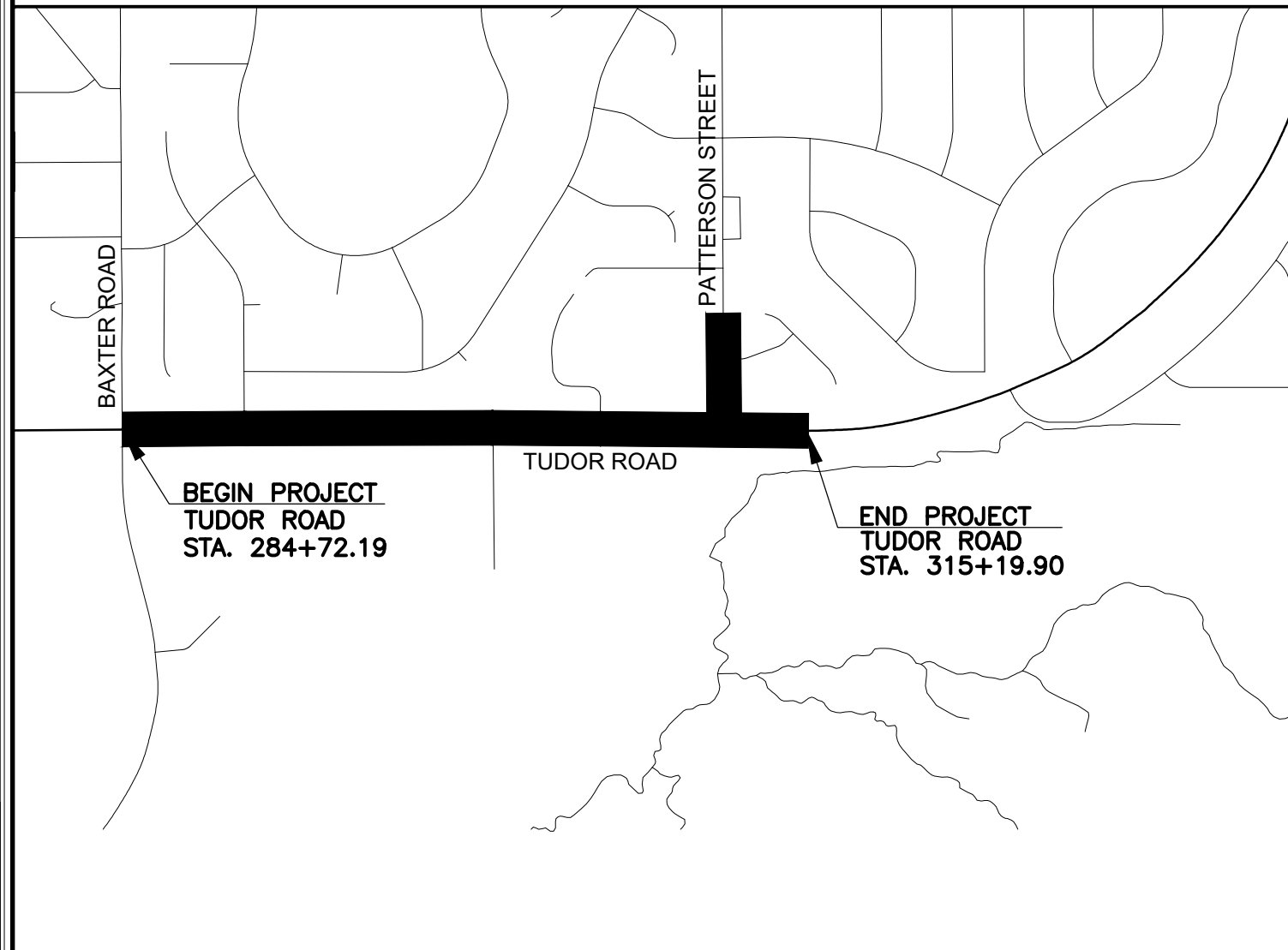
PROPOSED HIGHWAY PROJECT

HSIP: TUDOR ROAD: BAXTER ROAD TO PATTERSON STREET CHANNELIZATION

PROJECT NO. 0544023/CFHWY01073

TRAFFIC CONTROL PLAN

INDEX	
SHEET	DESCRIPTION
1	TITLE SHEET
2	PERMANENT CONSTRUCTION SIGNS LAYOUT
3	PEDESTRIAN TRAFFIC CONTROL
4	LANE CLOSURE TYPICAL LAYOUT
5	LANE CLOSURE TYPICAL LAYOUT



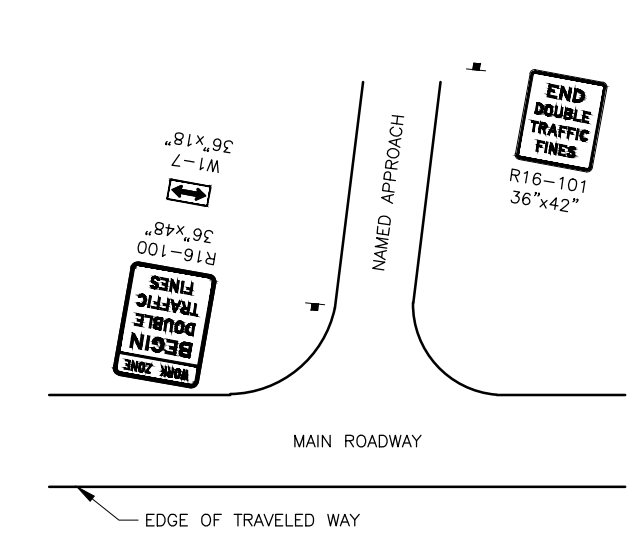
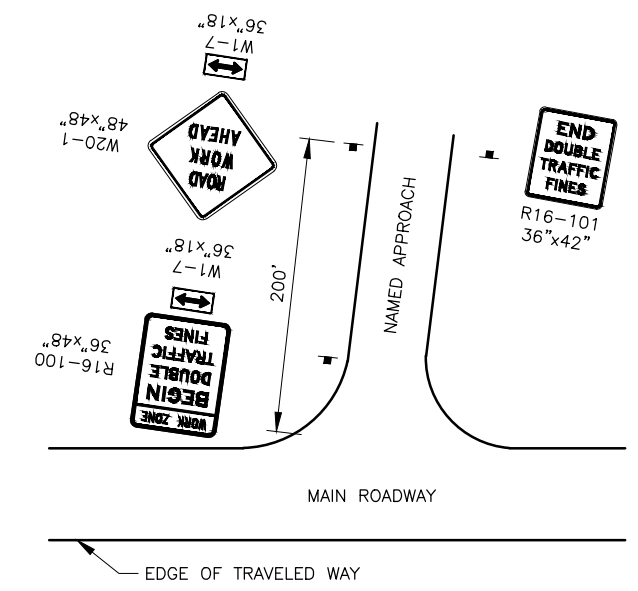
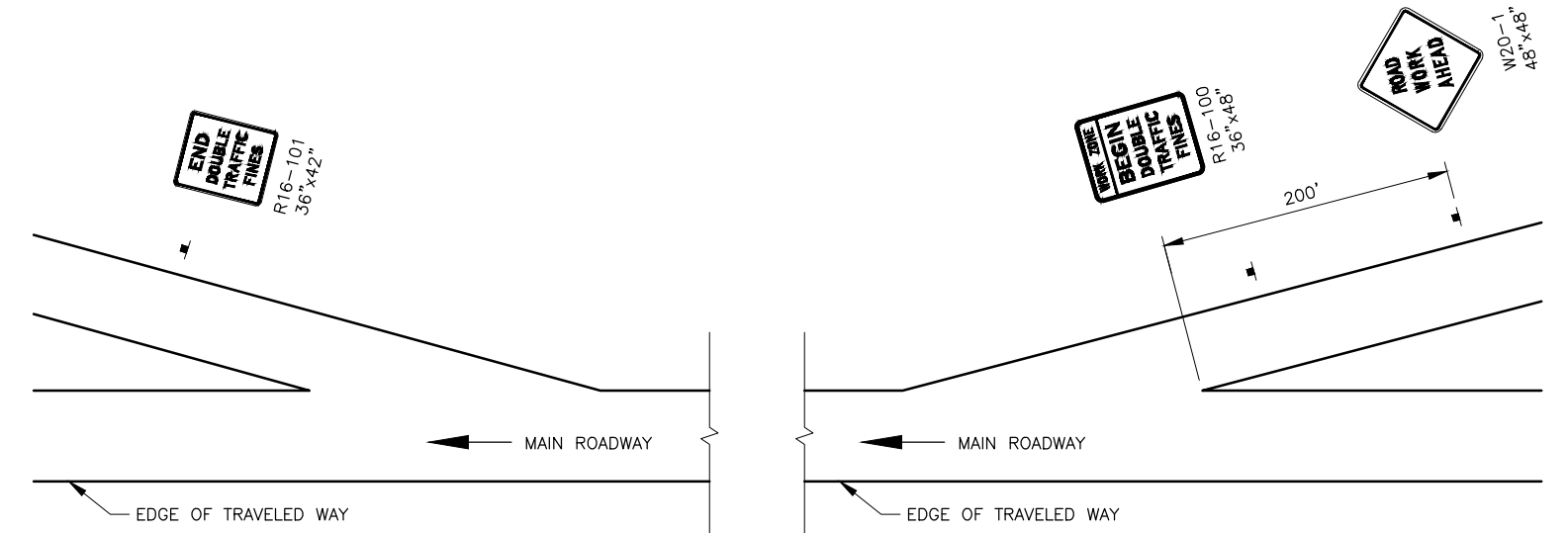
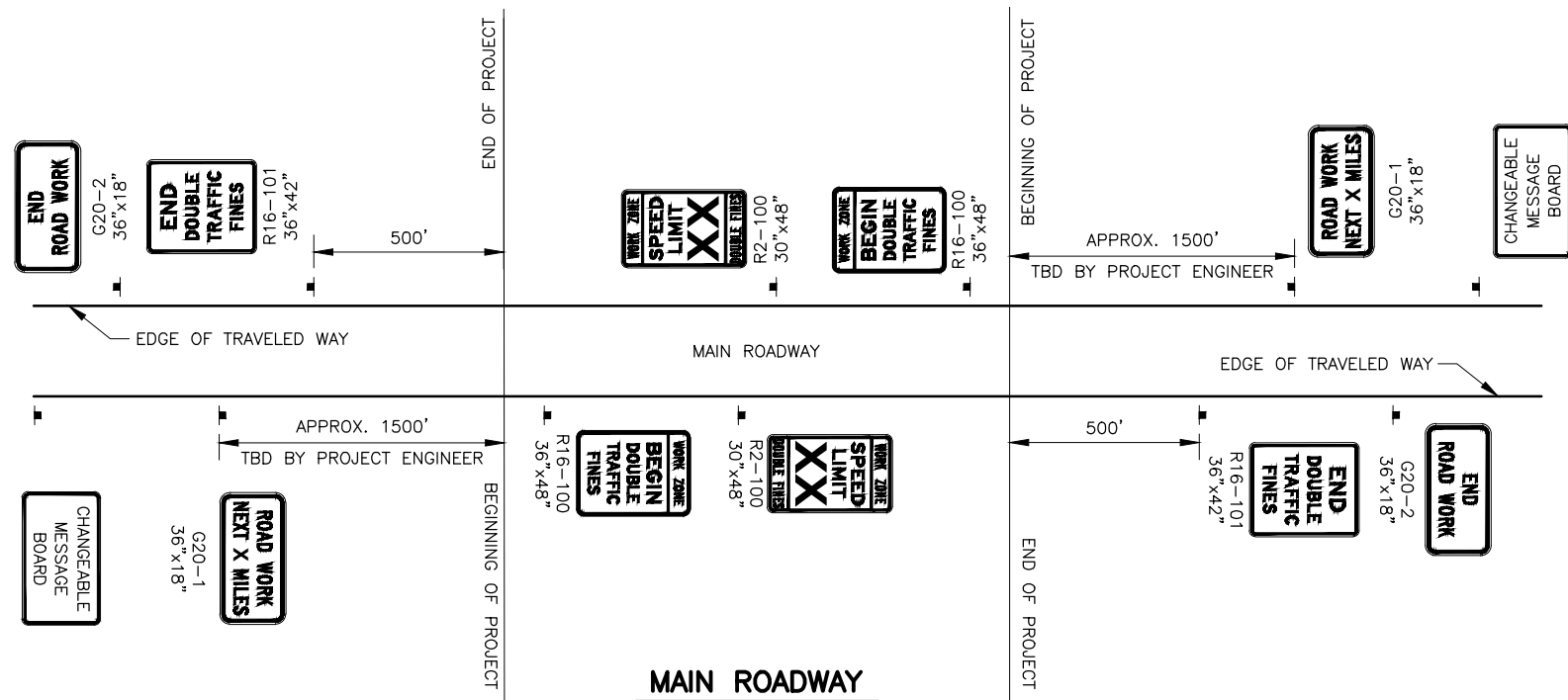
STATE OF ALASKA
DEPARTMENT OF TRANSPORTATION
AND PUBLIC FACILITIES

HSIP: TUDOR RD: BAXTER RD TO
PATTERSON ST CHANNELIZATION

TEMPORARY TRAFFIC CONTROL
PLAN

NO.	DATE	REVISION	STATE	PROJECT DESIGNATION	YEAR	SHEET NO.	TOTAL SHEETS
			ALASKA	0544023/CFHWY01073	2026	02	05

DRAWING LOCATION: Z:\PROJECTS\HSIP-TUDOR RD. BAXTER RD. TO PATTERSON ST. CHANNELIZATION - CFHWY01073\CIV3D\EXHIBITS\TCP\01073_TCP_DTLS.DWG
 DATE: 2/3/2026 12:51 PM
 SCALE: N/A
 DESIGNED BY: [blank]
 CHECKED BY: [blank]
 DRAFTED BY: [blank]



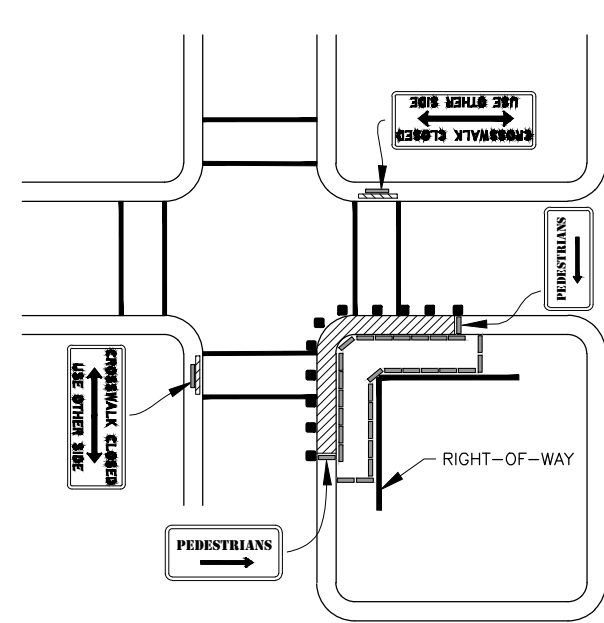
CONSTRUCTION SIGN NOTES:

1. SPEED LIMIT TO BE DETERMINED BY THE PROJECT ENGINEER.
2. SEE ALASKA STANDARD PLAN C-04 FOR SPACING OF DOUBLE FINE SIGNS AND SPEED LIMIT SIGNS.
3. CHANGEABLE MESSAGE BOARD SHALL BE USED FOR ADVANCED NOTIFICATION. LOCATION OF CHANGEABLE MESSAGE BOARDS SHALL BE DETERMINED BY THE ENGINEER.
4. CHANGEABLE MESSAGE BOARDS SHOWN ON THIS SHEET SHALL BE PAID FOR UNDER PAY ITEM 643.0003.0000.
5. FOR W1-7 SIGNS SHOWN ON THIS SHEET, BACKGROUND SHALL BE ORANGE.

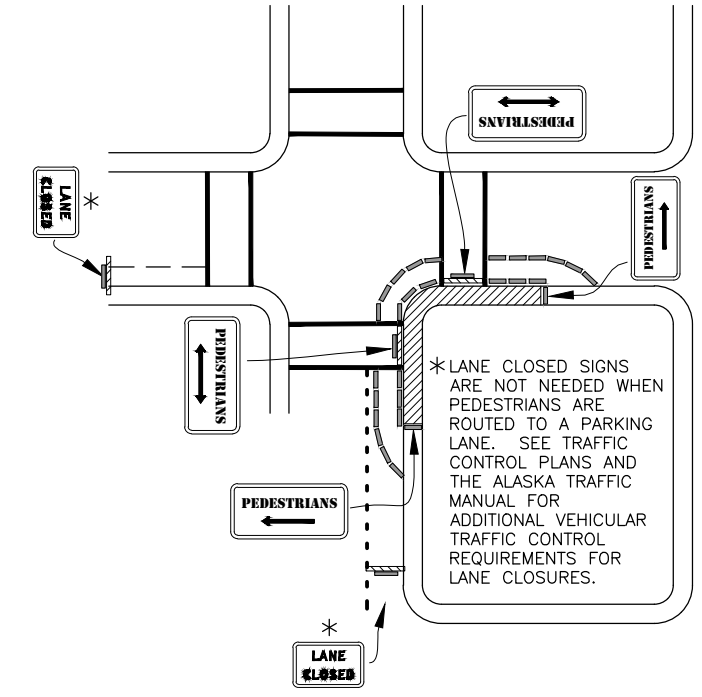
STATE OF ALASKA
 DEPARTMENT OF TRANSPORTATION
 AND PUBLIC FACILITIES
**HSIP: TUDOR RD: BAXTER RD TO
 PATTERSON ST CHANNELIZATION**
**PERMANENT CONSTRUCTION
 SIGNS LAYOUT**

NO.	DATE	REVISION	STATE	PROJECT DESIGNATION	YEAR	SHEET NO.	TOTAL SHEETS
			ALASKA	0544023/CFHWY01073	2026	03	05

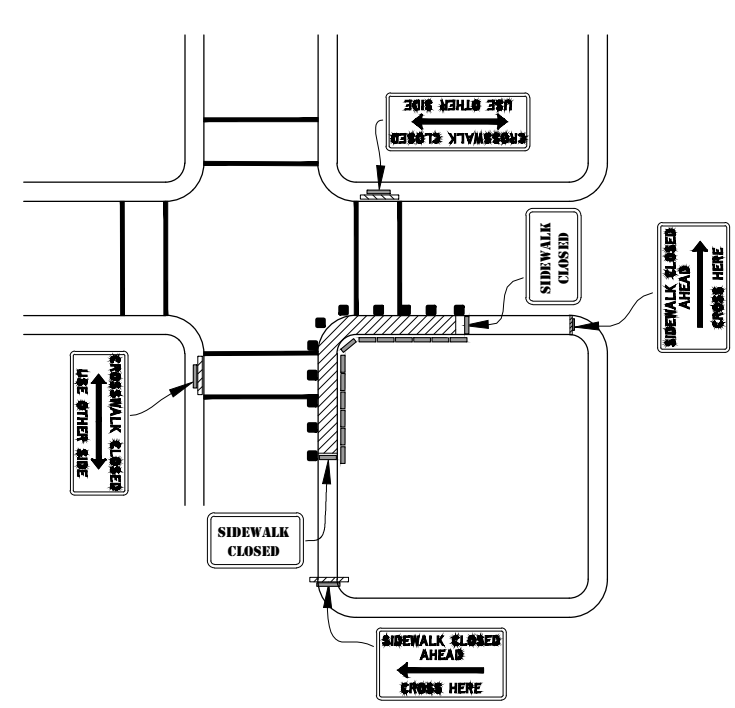
DRAWING LOCATION: Z:\PROJECTS\HSIP-TUDOR RD. BAXTER RD. TO PATTERSON ST. CHANNELIZATION - CFHWY01073\CIV3D\EXHIBITS\TCP\01073_TCP_DTL.S.DWG
 DESIGNED BY: N/A
 CHECKED BY: N/A
 DRAFTED BY: N/A
 SCALE: N/A
 DATE: 2/3/2026
 TIME: 12:51 PM



A. DETOUR AWAY FROM ROAD



B. DETOUR TO CLOSED PARKING OR TRAVEL LANE

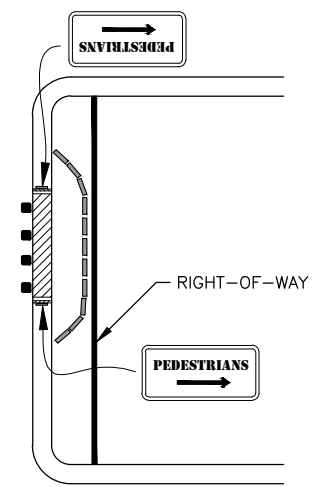


C. DETOUR TO OTHER SIDE

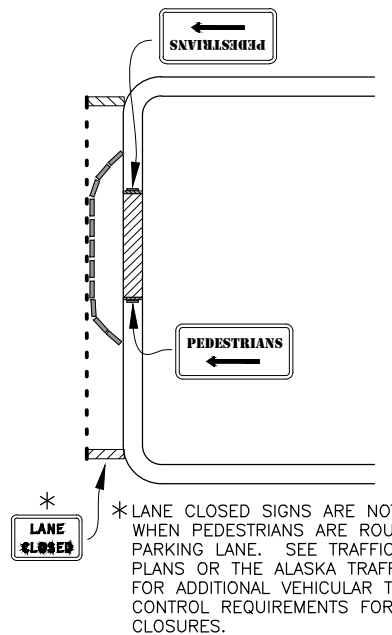
INTERSECTION SIDEWALK, PATHWAY OR SHOULDER CLOSURE

A TO C IN ORDER OF PREFERENCE

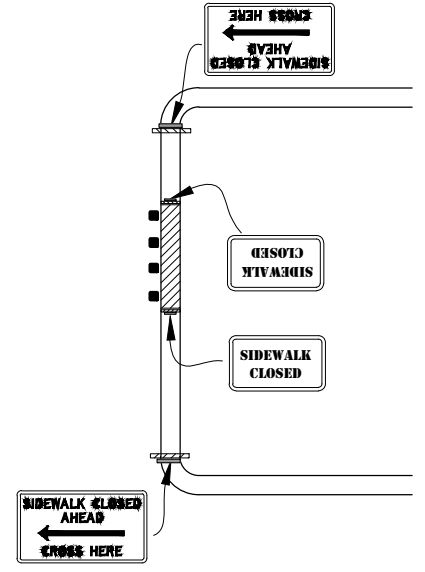
- NOTES:**
- THIS SHEET FOCUSES ON TRAFFIC CONTROL DEVICES FOR PEDESTRIANS. LOOK ELSEWHERE FOR VEHICULAR TRAFFIC CONTROL REQUIREMENTS.
 - PROVIDE PEDESTRIAN TRAFFIC CONTROL DEVICES WHEN SIDEWALKS OR PATHWAYS ARE CLOSED TO PEDESTRIANS AND WHERE REQUIRED BY THE PLANS OR SPECIFICATIONS. WHEN EXISTING PEDESTRIAN FACILITIES ARE DISRUPTED, CLOSED, OR RELOCATED IN A TTC ZONE, THE TEMPORARY FACILITIES SHALL BE DETECTABLE AND INCLUDE ACCESSIBILITY FEATURES CONSISTENT WITH THE FEATURES PRESENT IN THE EXISTING PEDESTRIAN FACILITY.
 - AVOID ROUTING PEDESTRIANS ACROSS ROADS UNNECESSARILY. USE DETAIL C OR F ONLY WHEN IT IS NOT PRACTICAL TO USE DETAIL A, B, D, OR E.
 - THE WIDTH OF THE EXISTING PEDESTRIAN FACILITY SHOULD BE PROVIDED FOR THE TEMPORARY FACILITY IF PRACTICAL. TRAFFIC CONTROL DEVICES AND OTHER CONSTRUCTION MATERIALS AND FEATURES SHOULD NOT INTRUDE INTO THE USABLE WIDTH OF THE SIDEWALK, TEMPORARY PATHWAY, OR OTHER PEDESTRIAN FACILITY. WHEN IT IS NOT POSSIBLE TO MAINTAIN A MINIMUM WIDTH OF 60 INCHES THROUGHOUT THE ENTIRE LENGTH OF THE PEDESTRIAN PATHWAY, A 60 X 60-INCH PASSING SPACE SHOULD BE PROVIDED AT LEAST EVERY 200 FEET TO ALLOW INDIVIDUALS IN WHEELCHAIRS TO PASS.
 - WHERE THE POSTED SPEED LIMIT EXCEEDS 45 MPH, SEPARATE PEDESTRIANS FROM ROADWAY EDGE OF PAVEMENT OR FACE OF CURB BY AT LEAST 5'. WHERE THAT IS NOT FEASIBLE, INSTALL PORTABLE CONCRETE BARRIER BETWEEN PEDESTRIANS AND THE ROAD.
 - WHEN PEDESTRIAN TRAFFIC CONTROL DEVICES REQUIRED BY THE CURRENT TRAFFIC CONTROL PLAN ARE NOT IN PLACE OR ARE TEMPORARILY REMOVED, PROVIDE A WORKER TO DIRECT PEDESTRIANS THROUGH THE WORK AREA.
 - COVER PEDESTRIAN TRAFFIC SIGNAL DISPLAYS CONTROLLING CLOSED CROSSWALKS.
 - WHEN USING DETAILS C AND F, ROUTE PEDESTRIANS TO THE BEST CROSSING POINT NEAR THE WORK AREA.
 - WHEN CHANNELIZATION IS USED TO DELINEATE A PEDESTRIAN PATHWAY, A CONTINUOUS DETECTABLE EDGING SHOULD BE PROVIDED THROUGHOUT THE LENGTH OF THE FACILITY SUCH THAT PEDESTRIANS USING A LONG CANE CAN FOLLOW IT. THESE DETECTABLE EDGINGS SHOULD COMPLY WITH THE PROVISIONS OF THE MUTCD.
 - SIGNS AND OTHER DEVICES MOUNTED LOWER THAN 7 FEET ABOVE THE TEMPORARY PEDESTRIAN PATHWAY SHOULD NOT PROJECT MORE THAN 4 INCHES INTO ACCESSIBLE PEDESTRIAN FACILITIES.
 - INSTALL PEDESTRIAN SIGNS ON AN ADA COMPLIANT (DETECTABLE) TYPE III BARRICADE.



D. DETOUR AWAY FROM ROAD



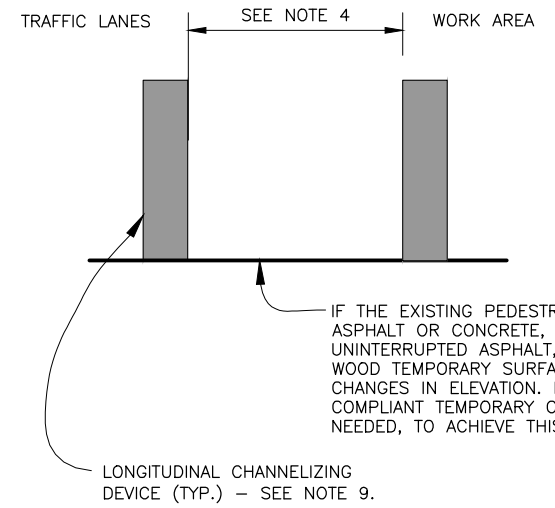
E. DETOUR TO CLOSED PARKING OR TRAVEL LANE



F. DETOUR TO OTHER SIDE

MID-BLOCK SIDEWALK, PATHWAY OR SHOULDER CLOSURE

D TO F IN ORDER OF PREFERENCE



PEDESTRIAN DETOUR - TYPICAL SECTION



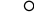

- LEGEND:**
- LONGITUDINAL CHANNELIZING DEVICE
 - TYPE III BARRICADE
 - CHANNELIZING DEVICE
 - TYPE III BARRICADE WITH SIGN
 - WORK AREA

STATE OF ALASKA
 DEPARTMENT OF TRANSPORTATION
 AND PUBLIC FACILITIES
**HSIP: TUDOR RD: BAXTER RD TO
 PATTERSON ST CHANNELIZATION**
PEDESTRIAN TRAFFIC CONTROL

Z:\PROJECTS\HSIP_TUDOR RD TO PATTERSON ST CHANNELIZATION - CFHWY01073\CIV3D\EXHIBITS\TCP\01073_TCP_LAYOUT.DWG
 DRAWING LOCATION
 2/3/2026 1:50 PM
 SCALE N/A
 DESIGNED BY
 CHECKED BY
 DRAFTED BY

NO.	DATE	REVISION	STATE	PROJECT DESIGNATION	YEAR	SHEET NO.	TOTAL SHEETS
			ALASKA	0544023/CFHWY01073	2026	04	05

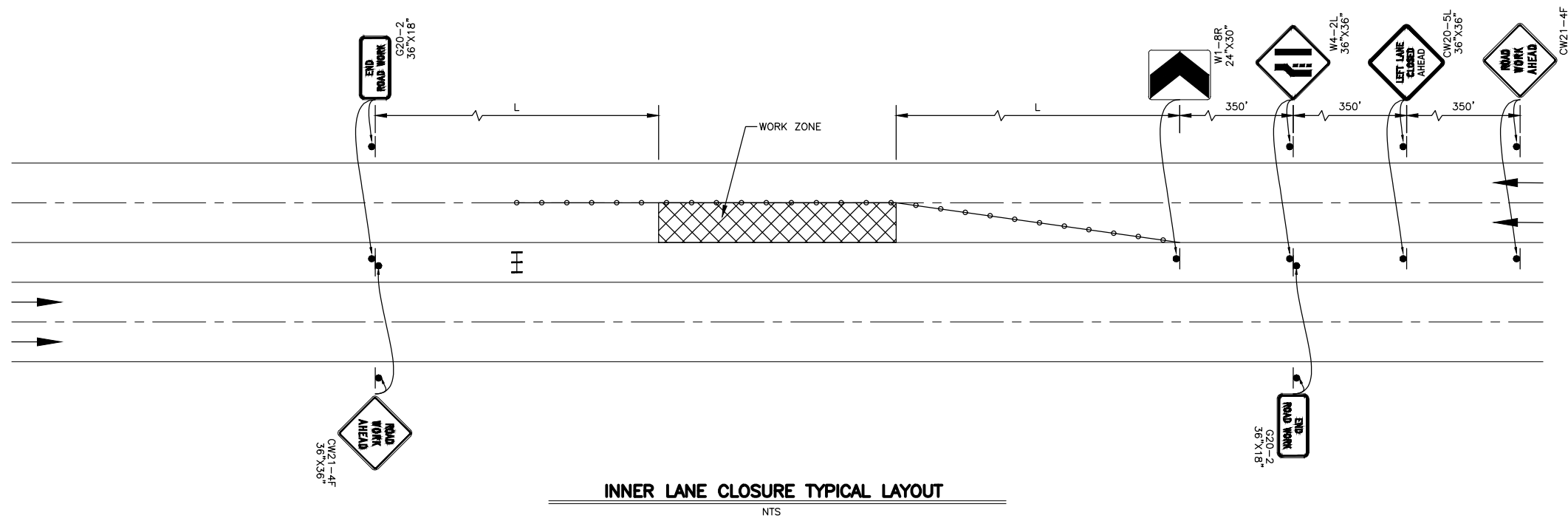
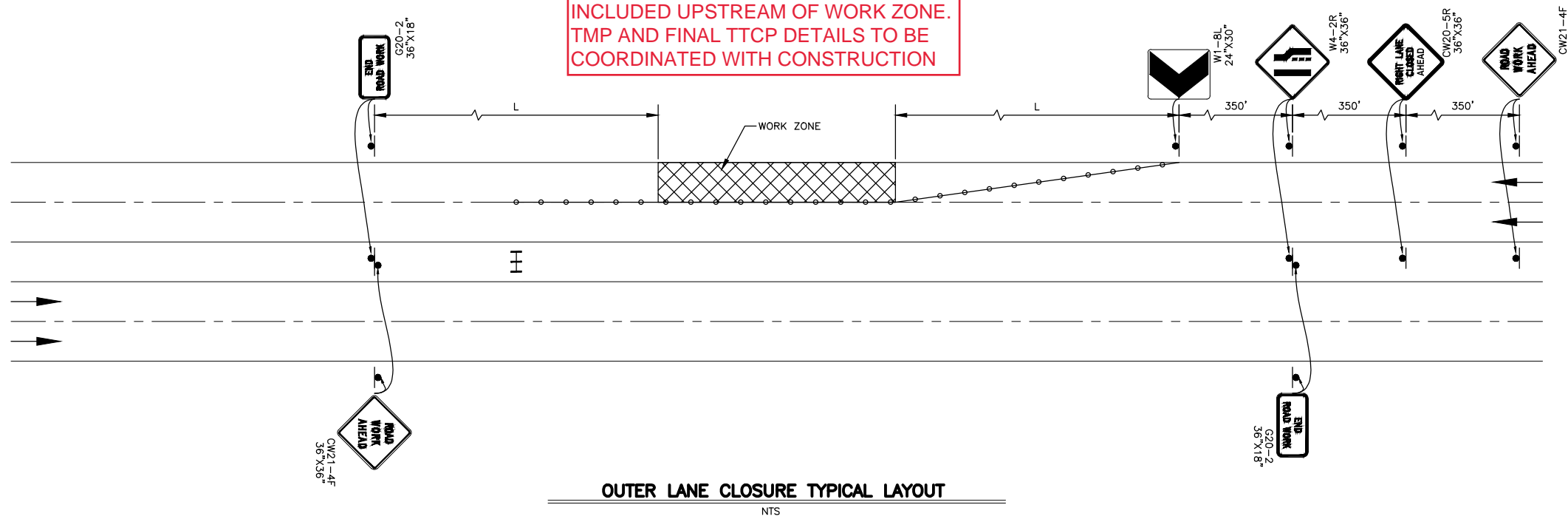
LEGEND:

-  ACTIVE WORK ZONES
-  TYPE I/II/III BARRICADE
-  TRAFFIC CHANNELIZATION DEVICE
-  CONSTRUCTION SIGN

TRAFFIC CONTROL PLAN NOTES:

1. USE FLAGGERS WHEN SIGHT DISTANCE IS LIMITED.
2. MAINTAIN ACCESS TO DRIVEWAYS IN PROJECT AREA.
3. TAPER LENGTH "L" MUST BE DETERMINED BY USING PART 6 OF THE LATEST VERSION OF THE MUTCD.

NOTE: BUFFER SPACES TO ALSO BE INCLUDED UPSTREAM OF WORK ZONE. TMP AND FINAL TTCP DETAILS TO BE COORDINATED WITH CONSTRUCTION





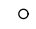

STATE OF ALASKA
 DEPARTMENT OF TRANSPORTATION
 AND PUBLIC FACILITIES
 HSIP: TUDOR RD: BAXTER RD TO
 PATTERSON ST CHANNELIZATION

LANE CLOSURE TYPICAL LAYOUT

DRAWING LOCATION Z:\PROJECTS\HSIP_TUDOR RD BAXTER RD TO PATTERSON ST CHANNELIZATION - CFHWY01073\EXHIBITS\TCP\01073_TCP_LAYOUT.DWG
 DESIGNED BY N/A
 CHECKED BY N/A
 DRAFTED BY N/A
 SCALE N/A
 TIME 2:03 PM
 DATE 2/3/2026

NO.	DATE	REVISION	STATE	PROJECT DESIGNATION	YEAR	SHEET NO.	TOTAL SHEETS
			ALASKA	0544023/CFHWY01073	2026	05	05

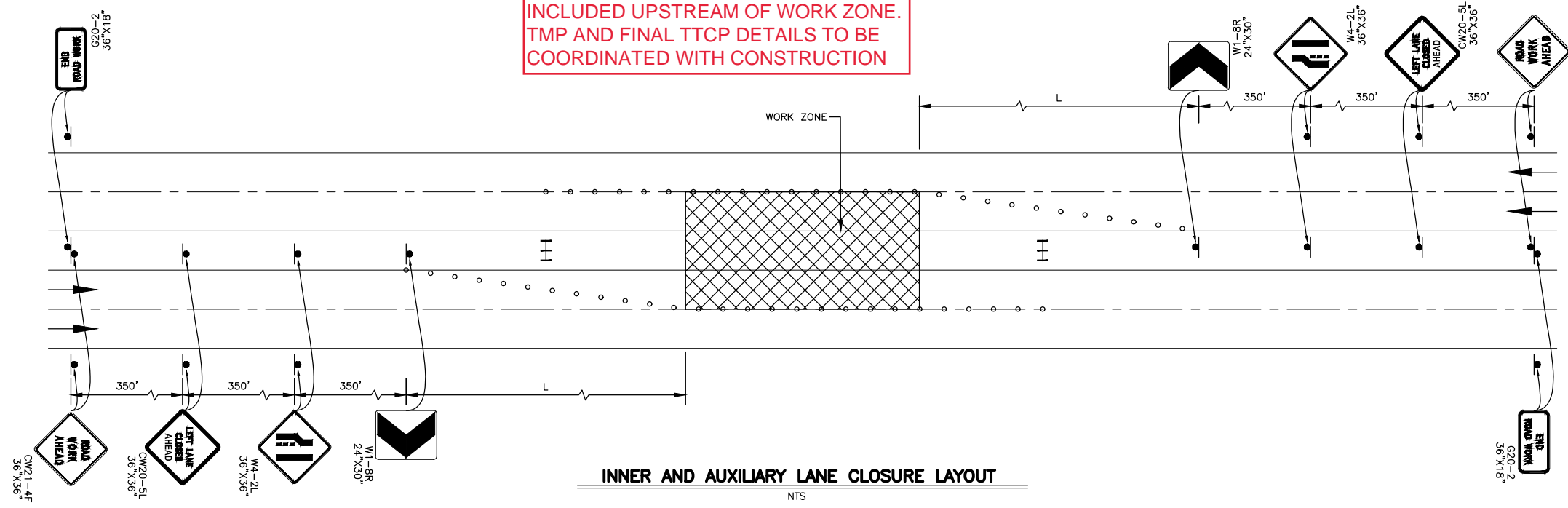
LEGEND:

-  ACTIVE WORK ZONES
-  TYPE I/II/III BARRICADE
-  TRAFFIC CHANNELIZATION DEVICE
-  CONSTRUCTION SIGN

TRAFFIC CONTROL PLAN NOTES:

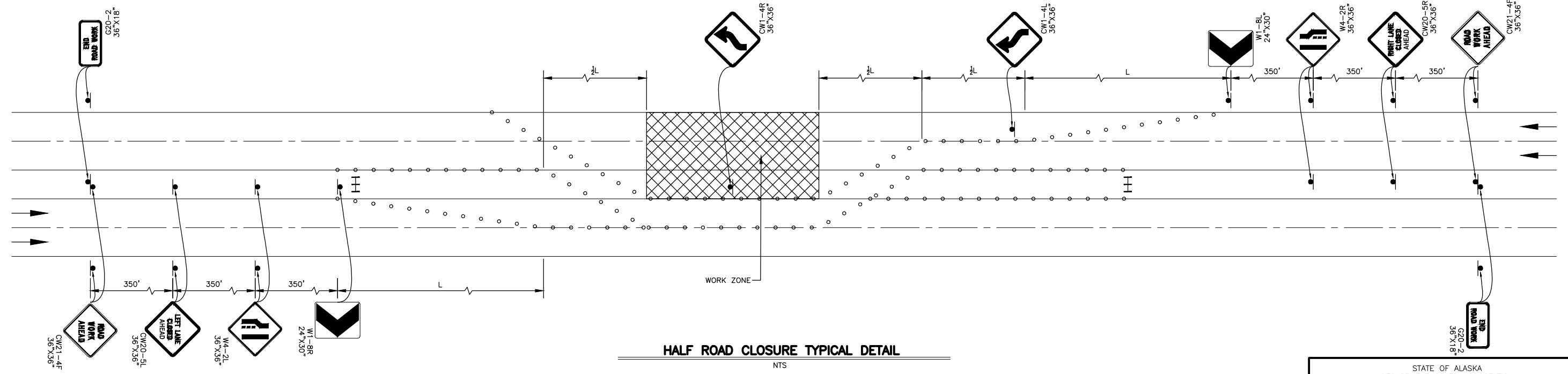
1. USE FLAGGERS WHEN SIGHT DISTANCE IS LIMITED.
2. MAINTAIN ACCESS TO DRIVEWAYS IN PROJECT AREA.
3. TAPER LENGTH "L" MUST BE DETERMINED BY USING PART 6 OF THE LATEST VERSION OF THE MUTCD.

NOTE: BUFFER SPACES TO ALSO BE INCLUDED UPSTREAM OF WORK ZONE. TMP AND FINAL TTCP DETAILS TO BE COORDINATED WITH CONSTRUCTION



INNER AND AUXILIARY LANE CLOSURE LAYOUT

NTS



HALF ROAD CLOSURE TYPICAL DETAIL

NTS

STATE OF ALASKA
 DEPARTMENT OF TRANSPORTATION
 AND PUBLIC FACILITIES
 HSIP: TUDOR RD: BAXTER RD TO
 PATTERSON ST CHANNELIZATION

LANE CLOSURE TYPICAL LAYOUT