

# STATE OF ALASKA

## DEPARTMENT OF TRANSPORTATION

### AND PUBLIC FACILITIES

# PROPOSED HIGHWAY PROJECT

## KENAI BRIDGE ACCESS ROAD

## PAVEMENT PRESERVATION

## PROJECT NO. CFHWY00830

## TRAFFIC CONTROL PLAN

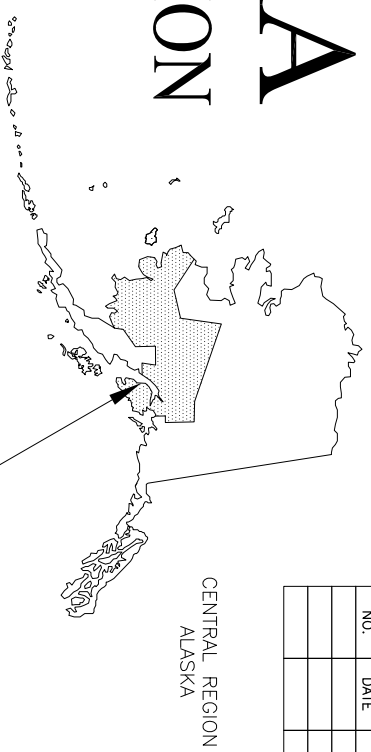
# PROPOSED HIGHWAY PROJECT

## KENAI BRIDGE ACCESS ROAD

## PATHWAY

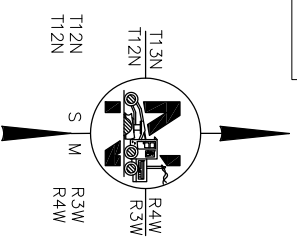
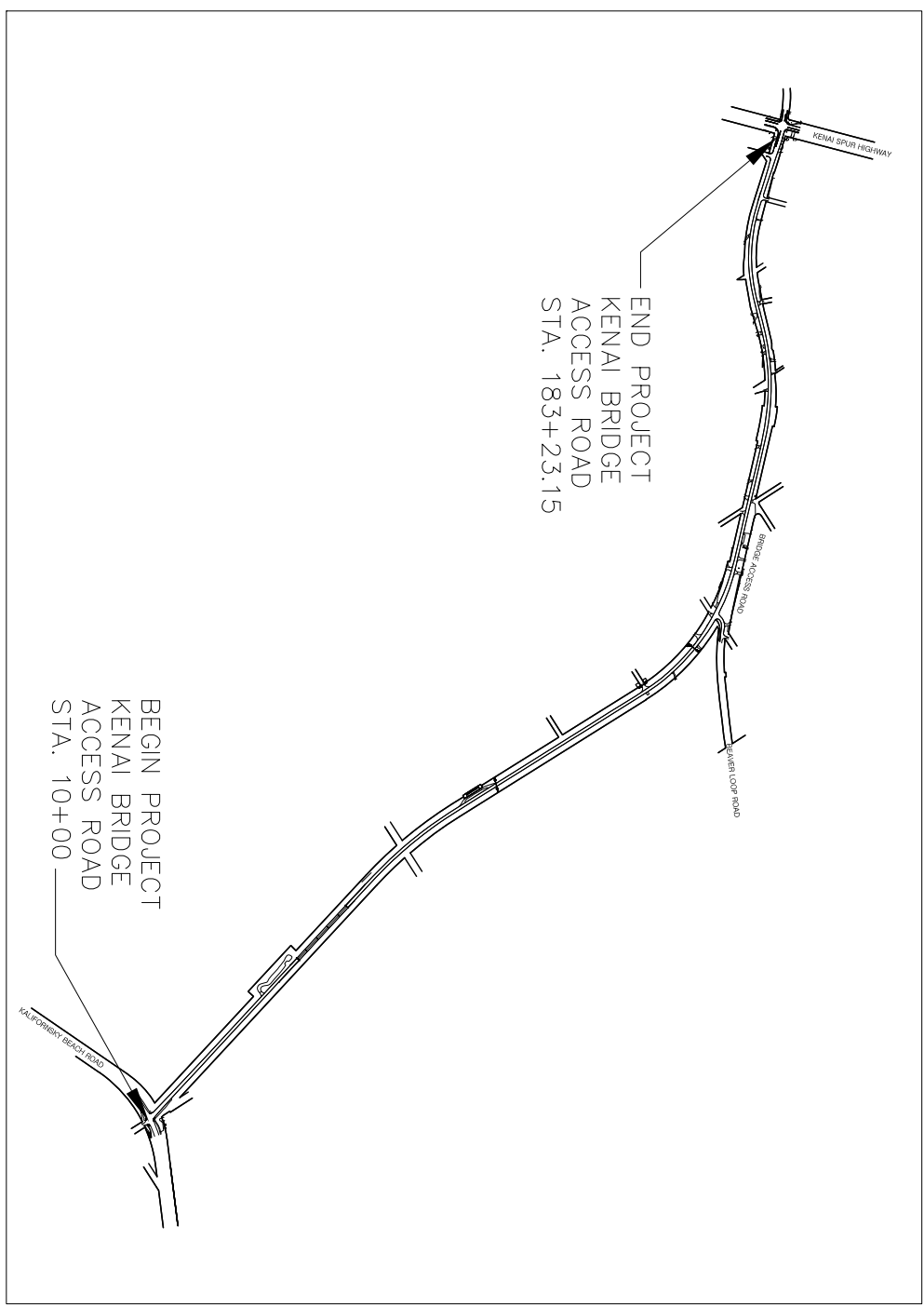
## PROJECT NO. CFHWY00689

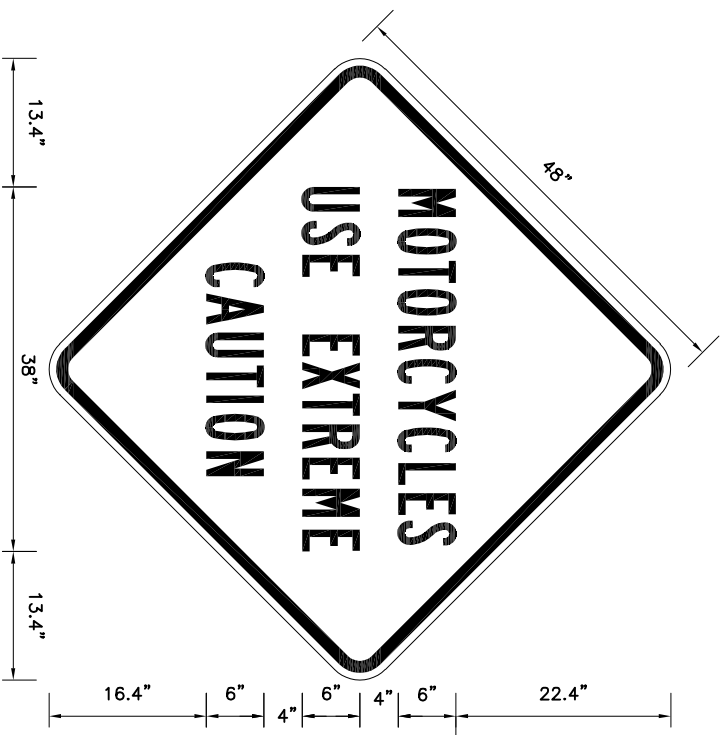
## TRAFFIC CONTROL PLAN



NO.	DATE	REVISION	STATE	PROJECT DESIGNATION	YEAR	SHEET NO.	TOTAL SHEETS
			ALASKA	CFHWY00830 CFHWY00689	2025	1	04

INDEX	
SHEET	DESCRIPTION
1	TITLE SHEET
2	PERMANENT CONSTRUCTION SIGNS LAYOUT
3	PERMANENT CONSTRUCTION SIGNS
4	PEDESTRIAN TRAFFIC CONTROL

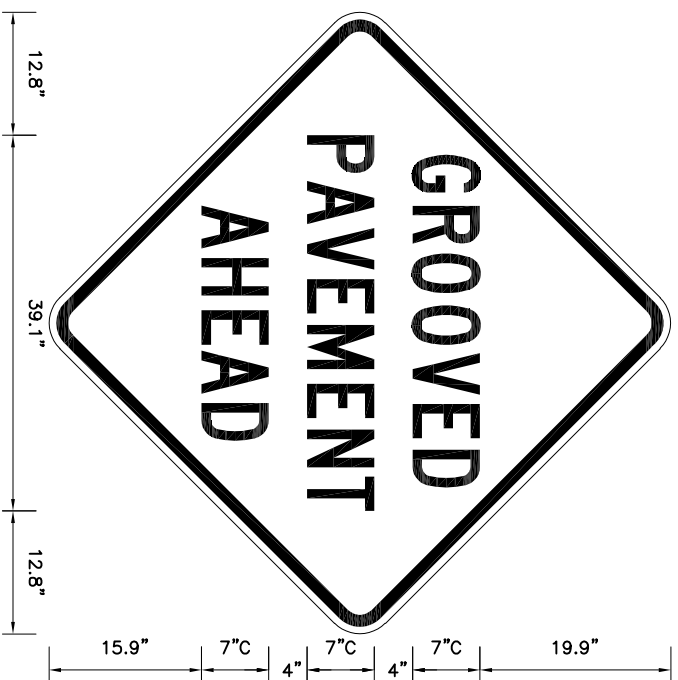




MOTORCYCLE CAUTION SIGN

MOTORCYCLE CAUTION NOTES:

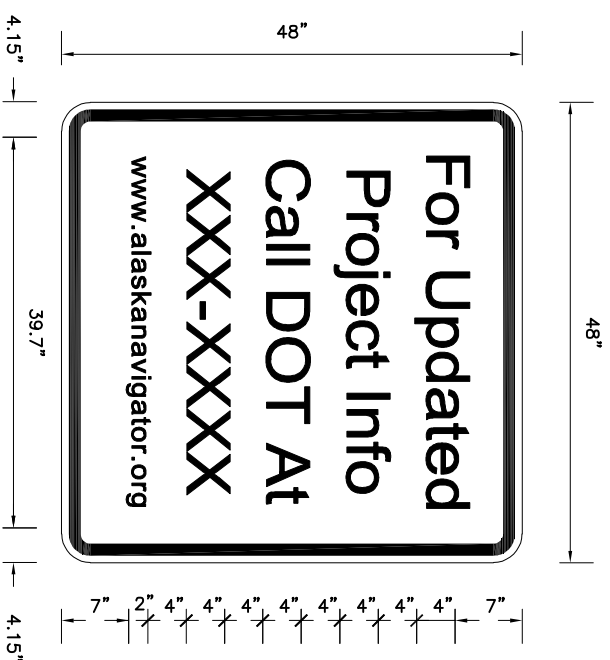
1. BORDER DIMENSIONS: R=3", TH=1.25", IN=0.75"
2. PROVIDE XX EACH ON WINDMASTER STANDS AS MOVEABLE CONSTRUCTION SIGNS AT LOCATIONS DETERMINED BY THE ENGINEER.



GROOVED PAVEMENT SIGN

GROOVED PAVEMENT NOTES:

1. BORDER DIMENSIONS: R=3", TH=1.25", IN=0.75"
2. PROVIDE XX EACH ON WINDMASTER STANDS AS MOVEABLE CONSTRUCTION SIGNS AT LOCATIONS DETERMINED BY THE ENGINEER.



PROJECT INFORMATION SIGN

PROJECT INFORMATION NOTES:

1. SIGN FONT: SERIES 2000
2. PROVIDE XX EACH ON 4"x4" POSTS AS PERMANENT CONSTRUCTION SIGNS AT LOCATIONS DETERMINED BY THE ENGINEER.



PREPARED: ROS  
 DRAWN: D&C  
 REVIEWED: D&C  
 DATE: XX/XX/XXXX

SHEET

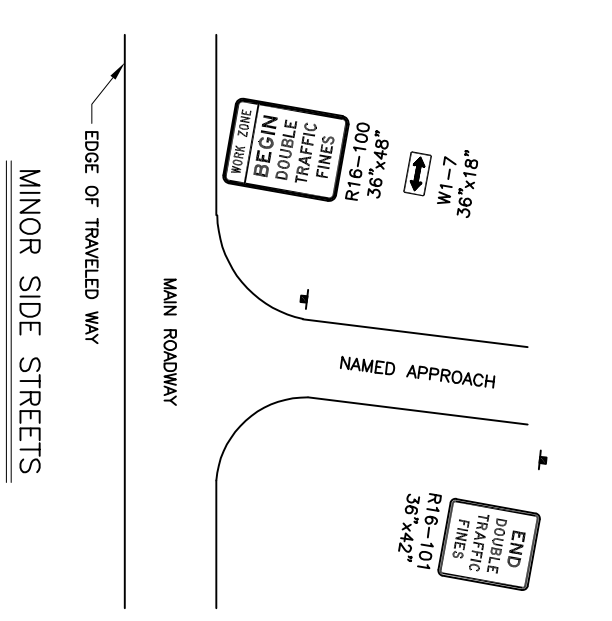
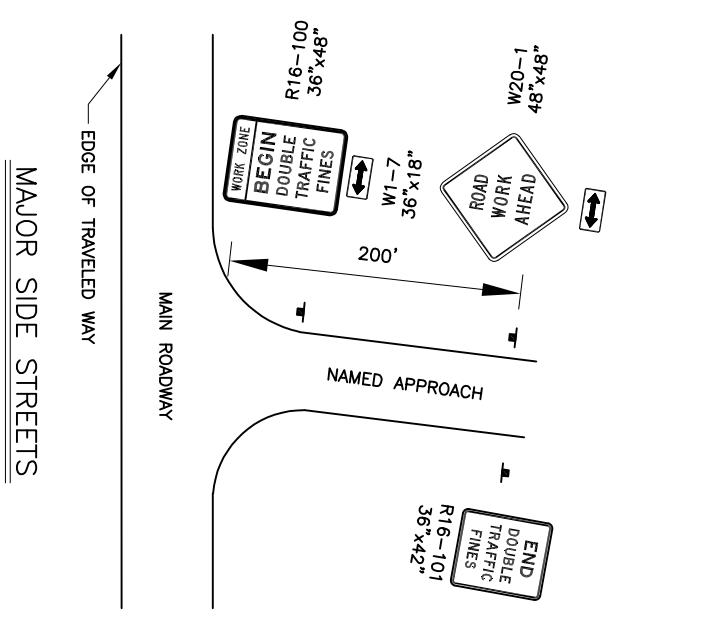
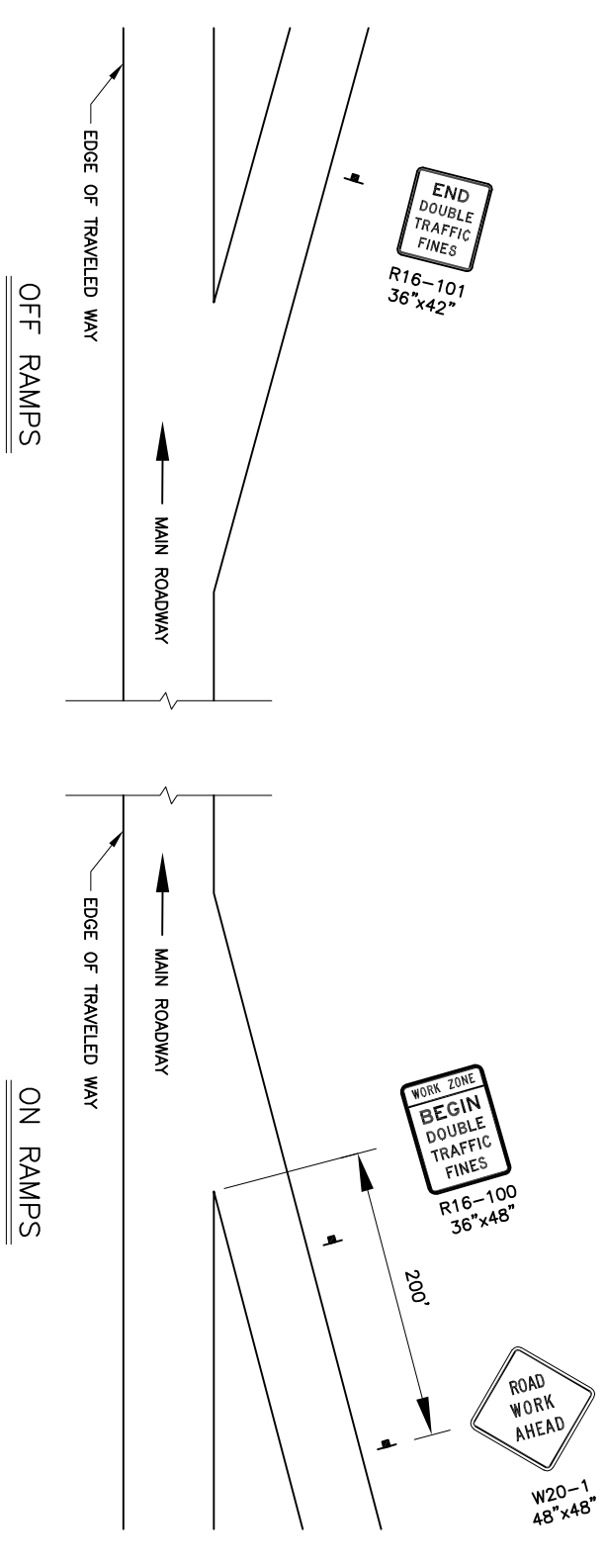
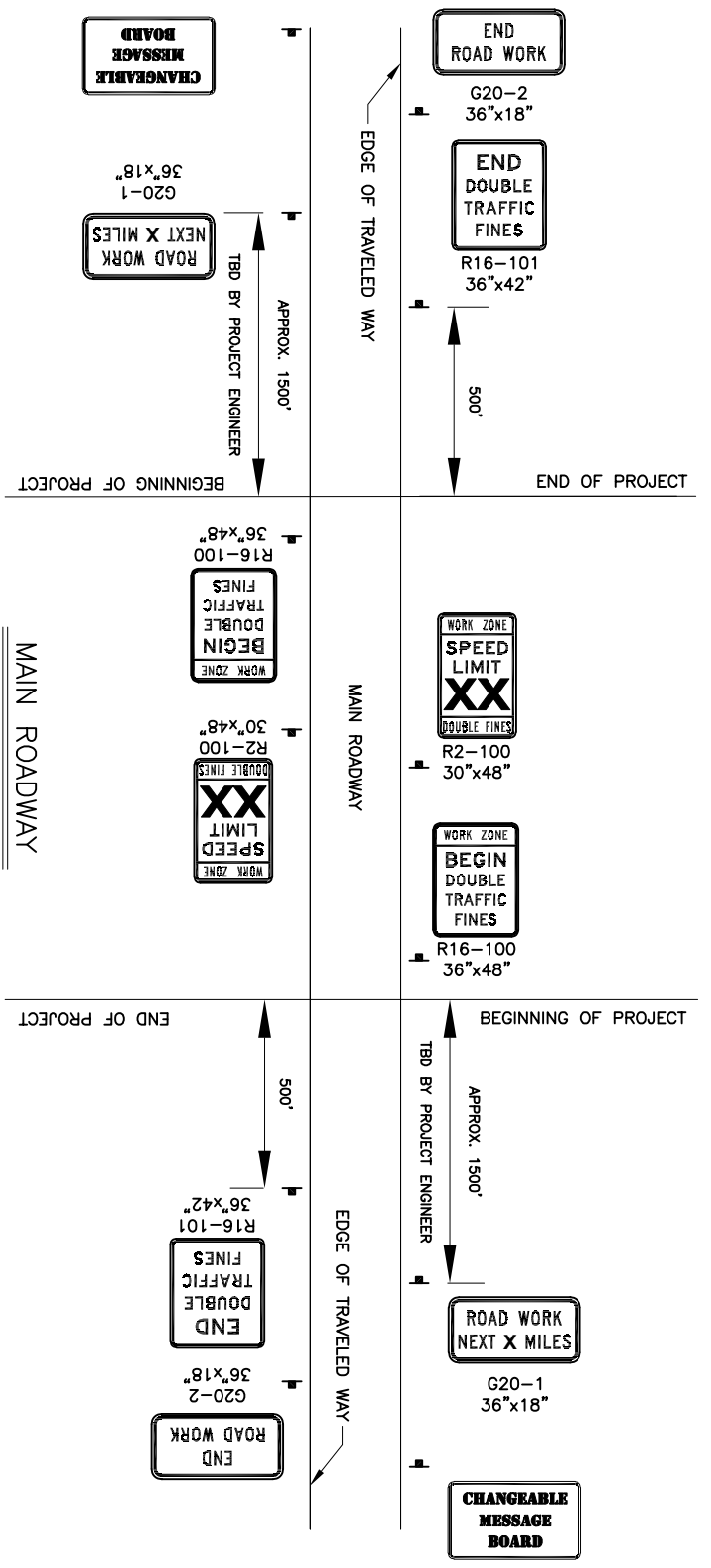
XXX

OF XX SHEETS

STATE OF ALASKA, DEPARTMENT OF NATURAL RESOURCES  
 PLANS DEVELOPED BY: DIVISION OF PARKS AND OUTDOOR RECREATION  
 550 W 7TH AVE. SUITE 1340, ANCHORAGE, AK 99501 - 907.269.8731

KENAI BRIDGE ACCESS ROAD  
 PAVEMENT PRESERVATION  
 PROJECT No. CFHWY00830

PERMANENT  
 CONSTRUCTION SIGNS



**CONSTRUCTION SIGN NOTES:**

1. SPEED LIMIT TO BE DETERMINED BY THE PROJECT ENGINEER.
2. SEE ALASKA STANDARD PLAN C-04 FOR SPACING OF DOUBLE FINE SIGNS AND SPEED LIMIT SIGNS.
3. CHANGEABLE MESSAGE BOARD SHALL BE USED FOR ADVANCED NOTIFICATION. LOCATION OF CHANGEABLE MESSAGE BOARDS SHALL BE DETERMINED BY THE ENGINEER.
4. CHANGEABLE MESSAGE BOARDS SHOWN ON THIS SHEET SHALL BE PAID FOR UNDER PAY ITEM 643.0003.0000.
5. FOR W1-7 SIGNS SHOWN ON THIS SHEET, BACKGROUND SHALL BE ORANGE.



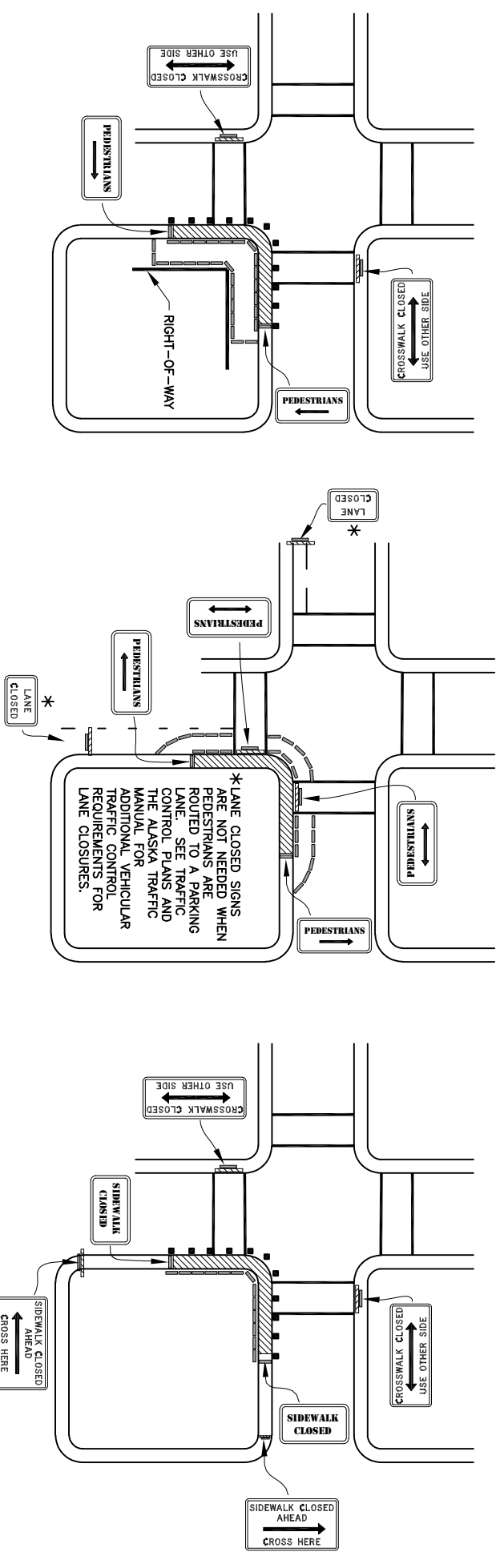
STATE OF ALASKA, DEPARTMENT OF NATURAL RESOURCES  
 PLANS DEVELOPED BY: DIVISION OF PARKS AND OUTDOOR RECREATION  
 550 W 7TH AVE. SUITE 1340, ANCHORAGE, AK 99501 - 907.269.8731

KENAI BRIDGE ACCESS ROAD  
 PAVEMENT PRESERVATION  
 PROJECT No. CFHWY00830

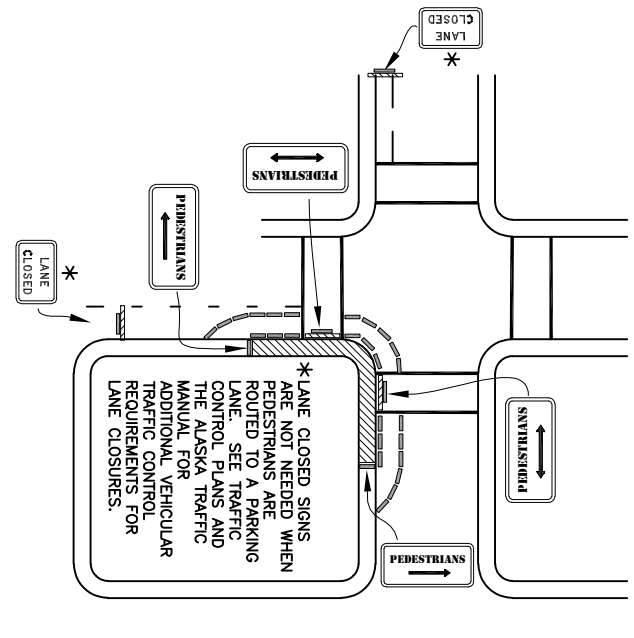
PERMANENT  
 CONSTRUCTION SIGNS LAYOUT

PREPARED: ROS  
 DRAWN: D&C  
 REVIEWED: D&C  
 DATE: XX/XX/XXXX

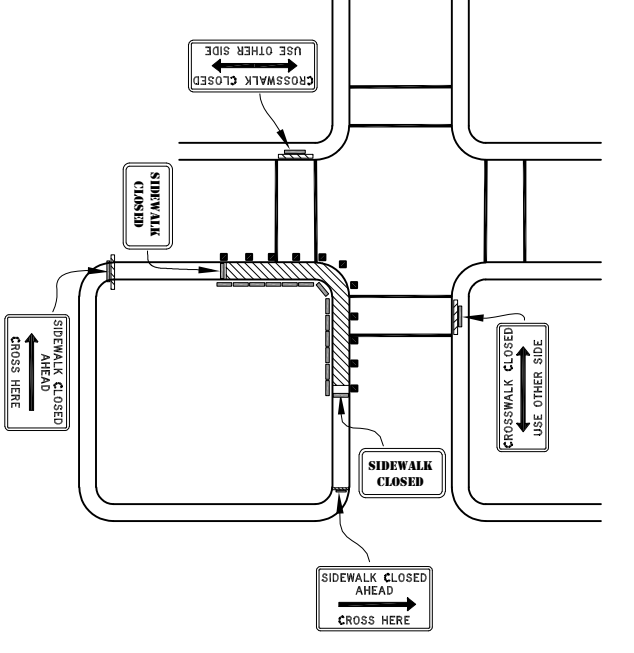
SHEET  
**XX**  
 OF XX SHEETS



A. DETOUR AWAY FROM ROAD

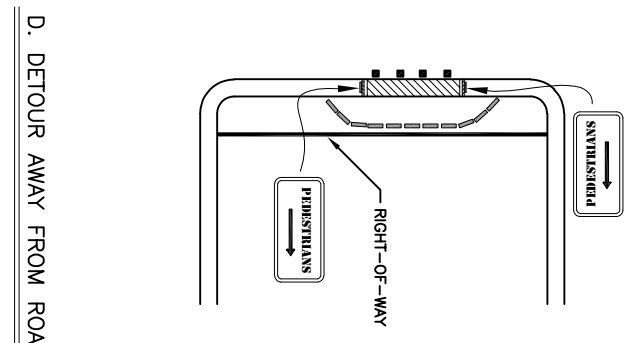


B. DETOUR TO CLOSED PARKING OR TRAVEL LANE

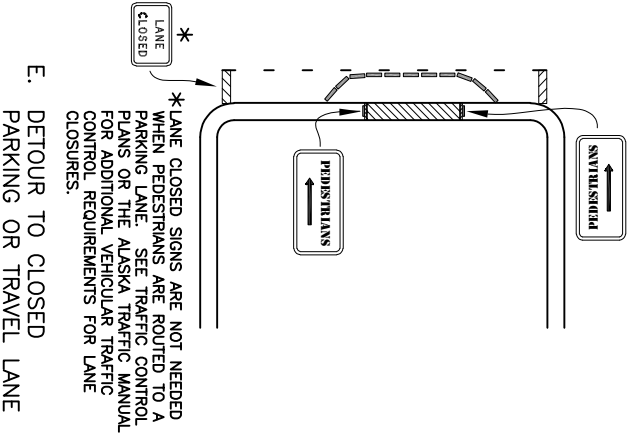


C. DETOUR TO OTHER SIDE

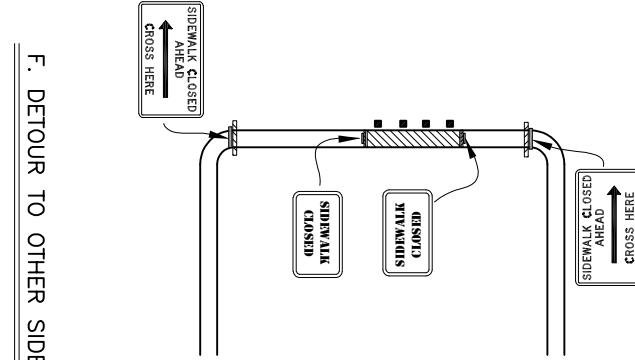
INTERSECTION SIDEWALK, PATHWAY OR SHOULDER CLOSURE  
A TO C IN ORDER OF PREFERENCE



D. DETOUR AWAY FROM ROAD

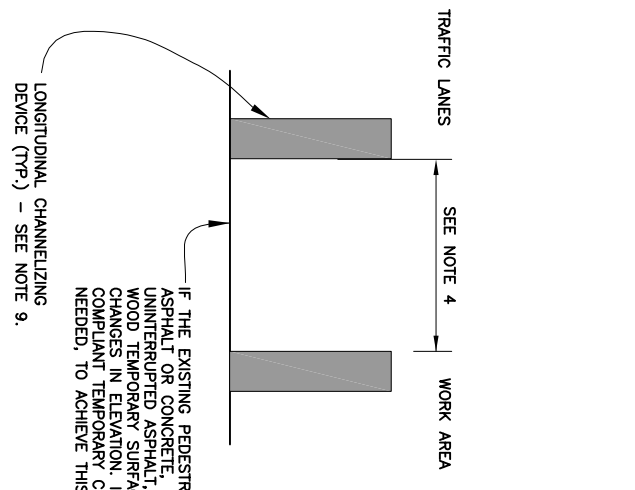


E. DETOUR TO CLOSED PARKING OR TRAVEL LANE



F. DETOUR TO OTHER SIDE

MID-BLOCK SIDEWALK, PATHWAY OR SHOULDER CLOSURE  
D TO F IN ORDER OF PREFERENCE



PEDESTRIAN DETOUR - TYPICAL SECTION

NOTES:

1. THIS SHEET FOCUSES ON TRAFFIC CONTROL DEVICES FOR PEDESTRIANS. LOOK ELSEWHERE FOR VEHICULAR TRAFFIC CONTROL REQUIREMENTS.
2. PROVIDE PEDESTRIAN TRAFFIC CONTROL DEVICES WHEN SIDEWALKS OR PATHWAYS ARE CLOSED TO PEDESTRIANS AND WHERE REQUIRED BY THE PLANS OR SPECIFICATIONS. WHEN EXISTING PEDESTRIAN FACILITIES ARE DISRUPTED, CLOSED, OR RELOCATED IN A TPC ZONE, THE TEMPORARY FACILITIES SHALL BE DETECTABLE AND INCLUDE ACCESSIBILITY FEATURES CONSISTENT WITH THE FEATURES PRESENT IN THE EXISTING PEDESTRIAN FACILITY.
3. AVOID ROUTING PEDESTRIANS ACROSS ROADS UNNECESSARILY. USE DETAIL C OR F ONLY WHEN IT IS NOT PRACTICAL TO USE DETAIL A, B, D, OR E.
4. THE WIDTH OF THE EXISTING PEDESTRIAN FACILITY SHOULD BE PROVIDED FOR THE TEMPORARY FACILITY IF PRACTICAL. TRAFFIC CONTROL DEVICES AND OTHER CONSTRUCTION MATERIALS AND FEATURES SHOULD NOT INTRUDE INTO THE USABLE WIDTH OF THE SIDEWALK, TEMPORARY PATHWAY, OR OTHER PEDESTRIAN FACILITY. WHEN IT IS NOT POSSIBLE TO MAINTAIN A MINIMUM WIDTH OF 60 INCHES THROUGHOUT THE ENTIRE LENGTH OF THE PEDESTRIAN PATHWAY, A 60 X 60-INCH PASSING SPACE SHOULD BE PROVIDED AT LEAST EVERY 200 FEET TO ALLOW INDIVIDUALS IN WHEELCHAIRS TO PASS.
5. WHERE THE POSTED SPEED LIMIT EXCEEDS 45 MPH, SEPARATE PEDESTRIANS FROM ROADWAY EDGE OF PAVEMENT OR FACE OF CURB BY AT LEAST 5'. WHERE THAT IS NOT FEASIBLE, INSTALL PORTABLE CONCRETE BARRIER BETWEEN PEDESTRIANS AND THE ROAD.
6. WHEN PEDESTRIAN TRAFFIC CONTROL DEVICES REQUIRED BY THE CURRENT TRAFFIC CONTROL PLAN ARE NOT IN PLACE OR ARE TEMPORARILY REMOVED, PROVIDE A WORKER TO DIRECT PEDESTRIANS THROUGH THE WORK AREA.
7. COVER PEDESTRIAN TRAFFIC SIGNAL DISPLAYS CONTROLLING CLOSED CROSSWALKS.
8. WHEN USING DETAILS C AND F, ROUTE PEDESTRIANS TO THE BEST CROSSING POINT NEAR THE WORK AREA.
9. WHEN CHANNELIZATION IS USED TO DELINEATE A PEDESTRIAN PATHWAY, A CONTINUOUS DETECTABLE EDGING SHOULD BE PROVIDED THROUGHOUT THE LENGTH OF THE FACILITY SUCH THAT PEDESTRIANS USING A LONG CANE CAN FOLLOW IT. THESE DETECTABLE EDGINGS SHOULD COMPLY WITH THE PROVISIONS OF THE MUTCD.
10. SIGNS AND OTHER DEVICES MOUNTED LOWER THAN 7 FEET ABOVE THE TEMPORARY PEDESTRIAN PATHWAY SHOULD NOT PROJEKT MORE THAN 4 INCHES INTO ACCESSIBLE PEDESTRIAN FACILITIES.
11. INSTALL PEDESTRIAN SIGNS ON AN ADA COMPLIANT (DETECTABLE) TYPE III BARRICADE.

LEGEND:

- LONGITUDINAL CHANNELIZING DEVICE
- TYPE III BARRICADE
- CHANNELIZING DEVICE
- TYPE III BARRICADE WITH SIGN
- WORK AREA

