



FACT SHEET

Hemmer Road Extension and Upgrade: Palmer Wasilla Hwy to Bogard Rd Project No: CFHWY00885

Project Scope

The Alaska Department of Transportation and Public Facilities (DOT&PF), in cooperation with the Federal Highway Administration (FHWA) and the Matanuska-Susitna Borough (MSB), is proposing to reconstruct Hemmer Rd from its intersection with Palmer-Wasilla Highway north and extend Hemmer Rd north to Bogard Road. The project will add travel lanes, a center two-way left turn lane or dedicated left turn pockets, and a traffic signal at the intersection of Hemmer Rd and Bogard Rd. Additional elements will include shoulders, pedestrian amenities, drainage improvements, and roadside hardware.

Schedule

The project is in the initial scoping phase. Survey and geotechnical crews will collect data in summer and fall of 2022. Cultural resources field studies are anticipated in 2022. Preliminary design is anticipated to begin fall 2022, with the environmental document expected to be completed in the spring of 2023. Right-of-Way acquisitions and utility relocations are anticipated to begin in 2025. Construction is anticipated in 2026 or later, depending on availability of funds.

Public Involvement

Public and agency scoping has been initiated. DOT&PF will coordinate with tribes, governments, and interested parties to identify, evaluate, and mitigate effects to historic properties through avoidance or other mitigation where necessary. The project will be presented to the public via project Open Houses after a preliminary (35%) design is developed, and again once design is 75% complete. Comments will be solicited from the public and stakeholders via a project website, transportation fairs, and the Open House meetings.

Cost

The project is estimated to cost about \$7 million including design, right-of-way acquisition, utility relocation and construction.

For more information contact:

Chris Bentz, P.E.

Project Manager
DOT&PF, Highway Design Section
Tel: 907-269-0652
E-mail: chris.bentz@alaska.gov

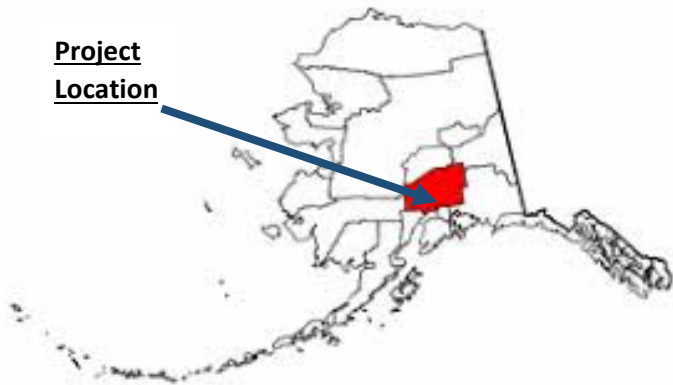
Roy Dahlstrom

Environmental Impact Analyst
DOT&PF, Environmental Section
Tel: 907-269-0533
E-mail: roy.dahlstrom@alaska.gov

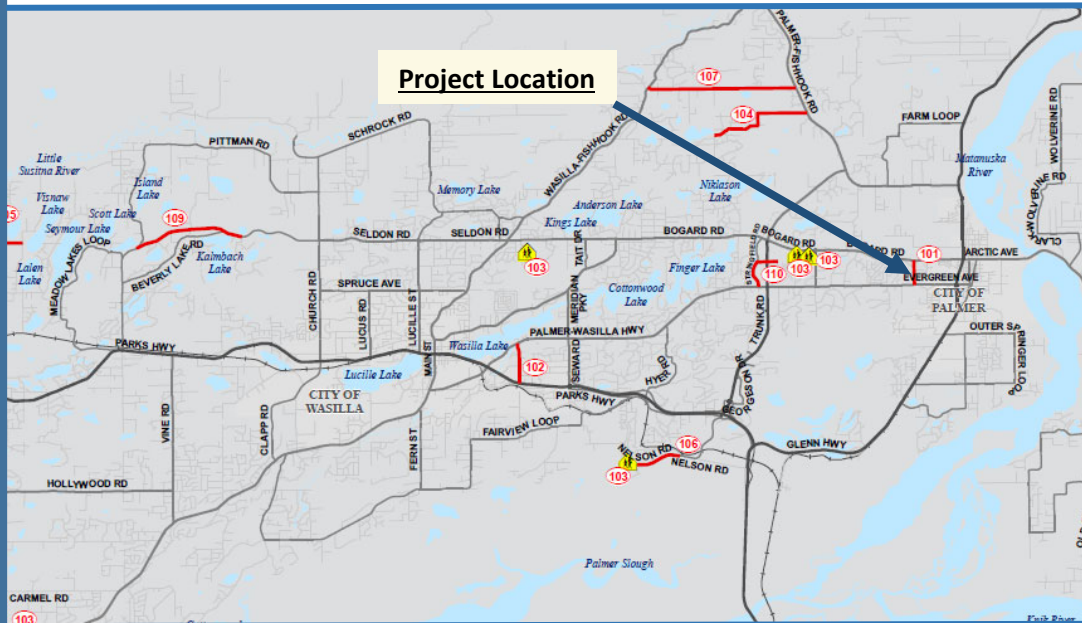
Kirsten Valentine, P.E.

Project Engineer
DOT&PF, Highway Design Section
Tel: 907-269-0585
E-mail: kirsten.valentine@alaska.gov

**Project
Location**



Project Location



Project: Hemmer Rd Upgrade and Extension, Palmer-Wasilla Hwy to Bogard Rd (MSB)

Project Number: CFHWY00885

Location: Matanuska-Susitna Borough, Alaska

Project Location and Vicinity Map

