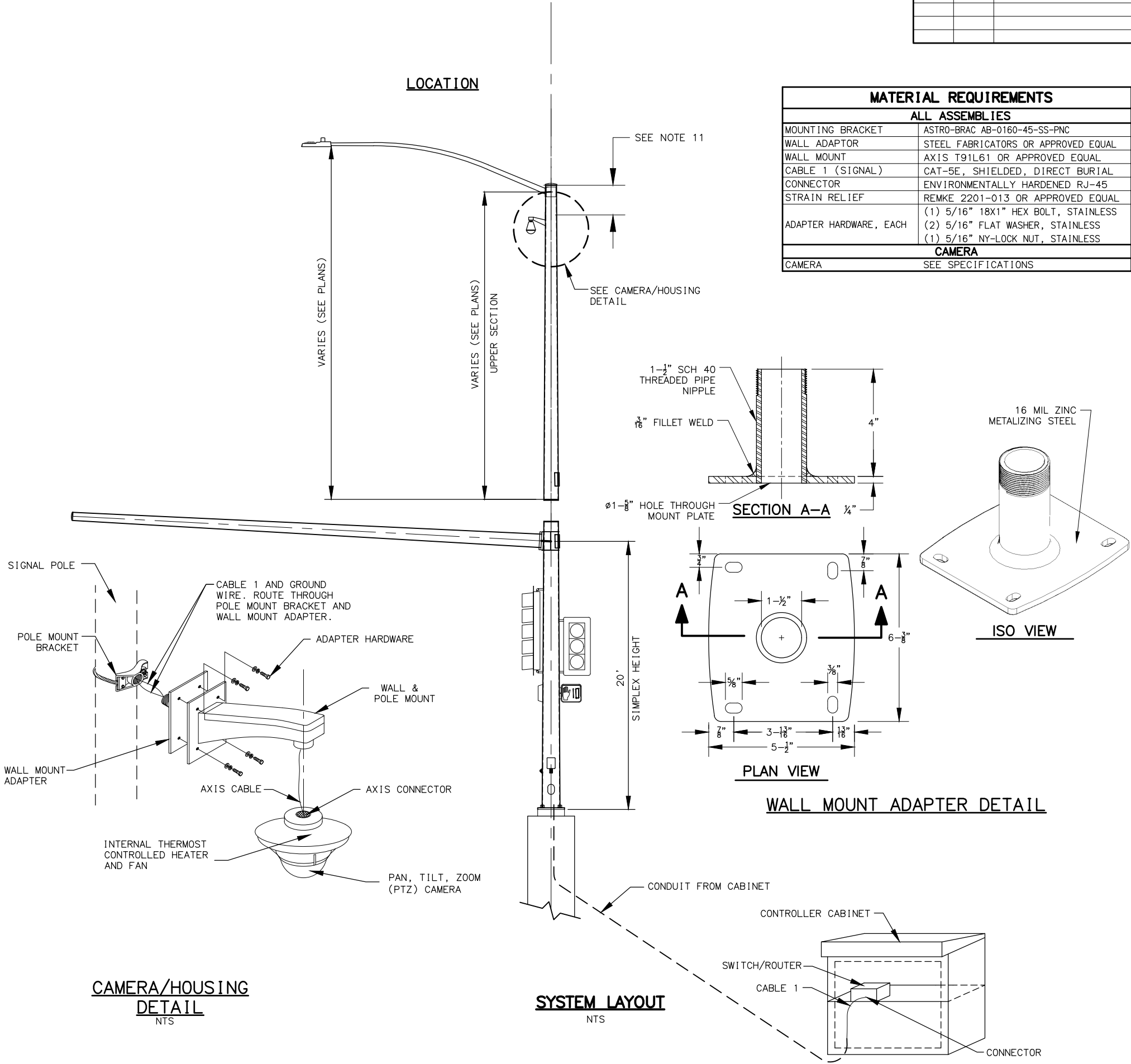
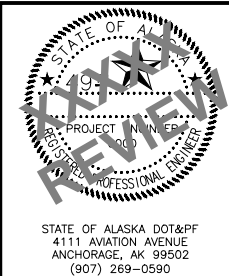
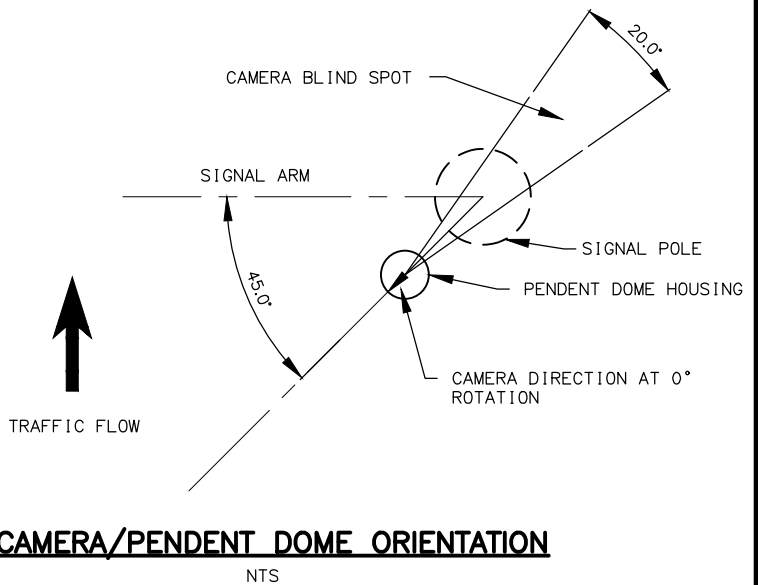


NO.	DATE	REVISION	STATE	PROJECT DESIGNATION	YEAR	SHEET NO.	TOTAL SHEETS
			ALASKA	XXXXXXXX/XXXXXXXXXX	20XX	H##	HXX



- NOTES:**
1. PROTECT CABLE ENDS FROM MOISTURE AT ALL TIMES.
  2. PULL CABLE IN ACCORDANCE WITH SECTION 660 OF THE SPECIAL PROVISIONS. PULL CABLE SO THAT THERE IS SUFFICIENT LENGTH TO REACH THE TOP OF THE CONTROLLER CABINET. CABLES ARE TO BE PULLED WITHOUT CONNECTORS ATTACHED. WHEN CABLE HAS BEEN PULLED TO FINAL LOCATIONS, SEAL ENDS OF CABLE.
  3. CABLE RUNS ARE TO BE MADE CONTINUOUS WITHOUT SPLICES EXCEPT FOR IN LOCATION SHOWN IN SPLICE DETAIL WITH SPECIFIED CONNECTOR.
  4. CABLE WITH DAMAGED INSULATION, OR THAT HAS BEEN CRIMPED OR BENT BEYOND THE MINIMUM BEND RADIUS MUST BE REPLACED AT NO ADDITIONAL COST.
  5. THE MINIMUM BEND RADIUS SHALL NOT EXCEED THE MANUFACTURERS RECOMMENDATIONS.
  6. ENSURE ADEQUATE LENGTH OF EACH CABLE TO ALLOW WORK ON THE ENDS OF THE CABLE IN THE CONTROLLER CABINET AND THE CAMERA MOUNTING LOCATION.
  7. MOUNT THE PENDENT DOME HOUSING AT A 45° ANGLE AT THE REQUIRED HEIGHT. ANGLE AND HEIGHT MAY BE ADJUSTED BY THE ENGINEER TO AVOID WELDS, APPENDICES AND TO APPROVE SIGHT DISTANCE.
  8. ADJUST CAMERA INSIDE THE PENDENT DOME HOUSING AS SHOWN. ENSURE THAT THE CAMERA IS MOUNTED AT A 0° TILT ANGLE.
  9. INSTALL WATERTIGHT THREADED RIGID COMPRESSION CONNECTOR WHERE CABLE PASSES THROUGH THE POLE.
  10. AT SPLICE LOCATION PROVIDE A SECURE CONNECTION USING CONNECTOR PARTS SPECIFIED. AFTER CONNECTION IS MADE COVER SPLICE WITH HEAT SHRINK. PROVIDE A STRAIN RELIEF CABLE AS NECESSARY.
  11. CAMERA/HOUSING MOUNTING HEIGHT TO BE DETERMINED IN THE FIELD BY THE ENGINEER AND MOA SIGNAL ELECTRONICS.



STATE OF ALASKA  
DEPARTMENT OF TRANSPORTATION  
AND PUBLIC FACILITIES

PROJECT TITLE  
PROJECT TITLE

PAN, TILT, ZOOM, CAMERA  
MOUNTING DETAILS

STATE OF ALASKA DOT&PF  
4111 AVIATION AVENUE  
ANCHORAGE, AK 99502  
(907) 269-0590