

DESIGNED BY
PJS
CHECKED BY
RDR
DRAFTED BY
MF

DATE
3/27/2024
TIME
11:32 AM
SCALE
X" = XX'

DRAWING LOCATION
\\1907.S04-ALASKA-004-SHARED\AVA\TSE\PROJECTS\02-REGIONAL-DETAILS\01\01-FTP-MASTERS\2021-
FORMAT\25-RADAR-DETECTION-SOLDWG

NO.	DATE	REVISION	STATE	PROJECT DESIGNATION	YEAR	SHEET NO.	TOTAL SHEETS
			ALASKA	XXXXXXXX/XXXXXXXXXXXX	20XX	H##	HXX

NOTES:

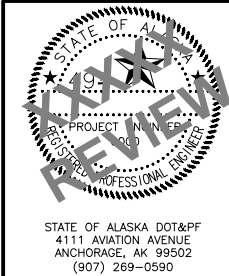
1. PROTECT CABLE ENDS FROM MOISTURE AT ALL TIMES.
2. CABLE WITH DAMAGED INSULATION, OR THAT HAS BEEN CRIMPED OR BENT BEYOND THE MINIMUM BEND RADIUS MUST BE REPLACED AT CONTRACTORS EXPENSE.
3. THE MINIMUM BEND RADIUS SHALL NOT EXCEED MANUFACTURERS RECOMMENDATIONS.
4. MOUNT THE RADAR AT THE LOCATION STATED IN THE PLANS. PLACEMENT MAY BE ADJUSTED BY THE ENGINEER TO ALLOW FOR BETTER AIMING OF THE RADAR OR TO AVOID OTHER HAZARDS.
5. INSTALL WATERTIGHT THREADED RIGID COMPRESSION CONNECTOR WHERE CABLE PASSES THROUGH THE POLE.
6. FURNISH ONLY NEW EQUIPMENT OF THE BRAND AND TYPE LISTED. PROVIDE AT NO ADDITIONAL COST ALL NECESSARY DEVICES, WIRES, BRACKETS/HARDWARE ETC. TO PROVIDE A FULLY FUNCTIONING RADAR DETECTION SYSTEM.
7. INSTALL #10 AWG GROUNDING CONDUCTOR WITH GREEN COLORED INSULATION BETWEEN THE EXTERNAL GROUNDING LUG ON THE SMARTSENSOR UNIT AND A 1/4" x 1/2" STAINLESS STEEL BOLT BOLTED TO THE POLE.
8. CABLE RUNS ARE TO BE MADE CONTINUOUS WITHOUT SPLICES EXCEPT WHERE NOTED IN THE JUNCTION BOX MINI.

STOP BAR DETECTOR EQUIPMENT

SMARTSENSOR MATRIX (SS-225)
MINI 710- SENSOR CABLE J-BOX MINI WITH TERMINAL BLOCKS (102-0453)
HOME RUN CABLE (MTX2 HMRN)
SMARTSENSOR 6 CONDUCTOR CABLE (SS-704-080) WITH SINGLE END CONNECTOR (SS-709) FACTORY INSTALLED
SENSOR MOUNT - 6" 3 AXIS ALUM. BRACKET. (SS-611)
ADD ON KNUCKLE (360-0129)

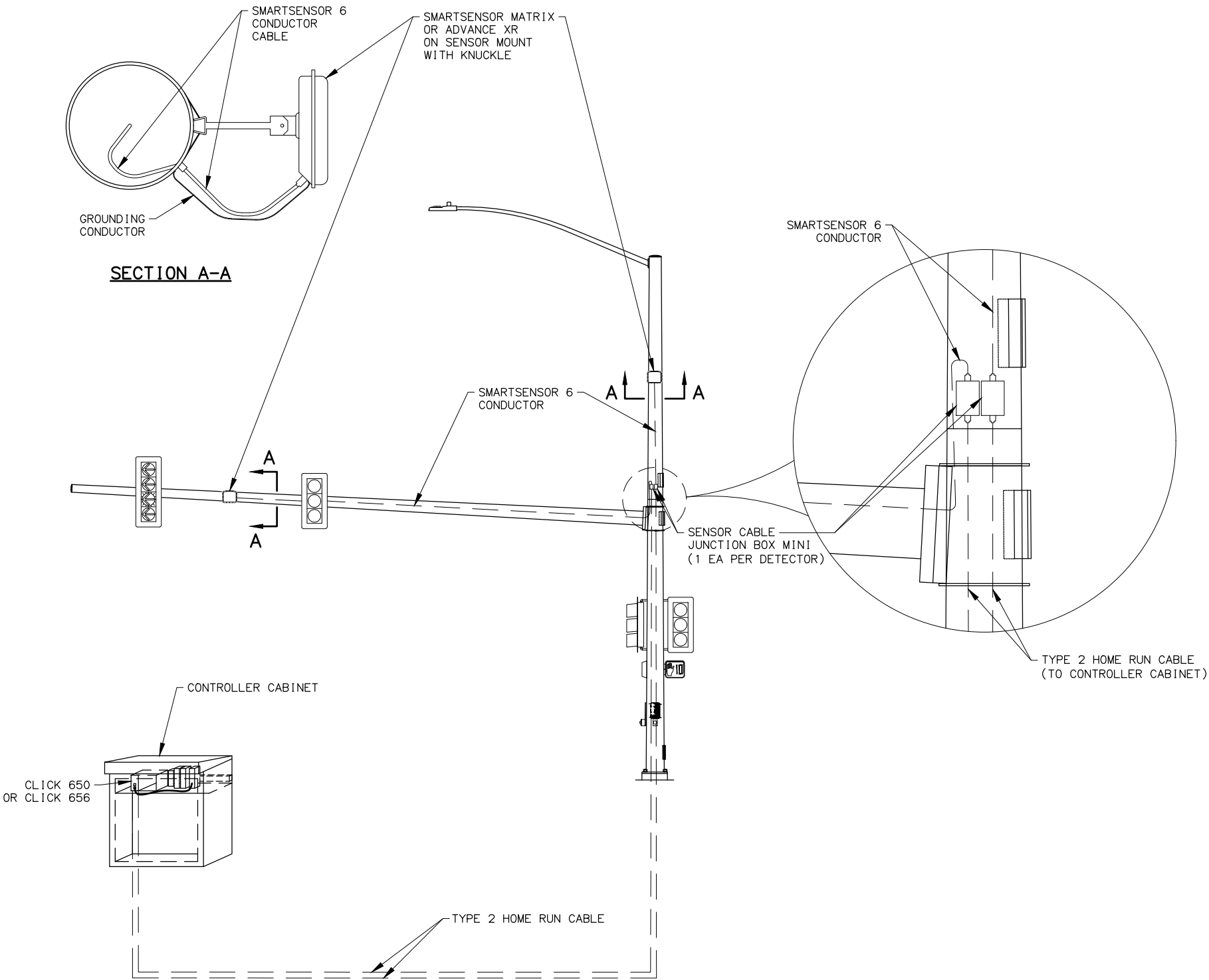
ADVANCE EXTENDED RANGE (XR) DETECTOR EQUIPMENT

SMARTSENSOR ADVANCE EXTENDED RANGE (SS-200E)
MINI 710- SENSOR CABLE J-BOX MINI WITH TERMINAL BLOCKS (102-0453)
HOME RUN CABLE (MTX2 HMRN)
SMARTSENSOR 6 CONDUCTOR CABLE (SS-704-XXX) WITH SINGLE END CONNECTOR (SS-709) FACTORY INSTALLED
SENSOR MOUNT - 6" 3 AXIS ALUM. BRACKET. (SS-611)
ADD ON KNUCKLE (360-0129)



STATE OF ALASKA
DEPARTMENT OF TRANSPORTATION
AND PUBLIC FACILITIES
PROJECT TITLE
PROJECT TITLE

RADAR DETECTION DETAILS



RADAR DETECTION DETAIL
(NTS)