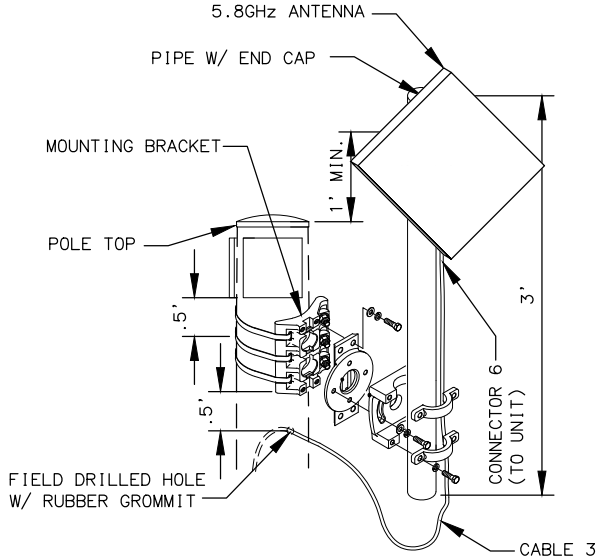
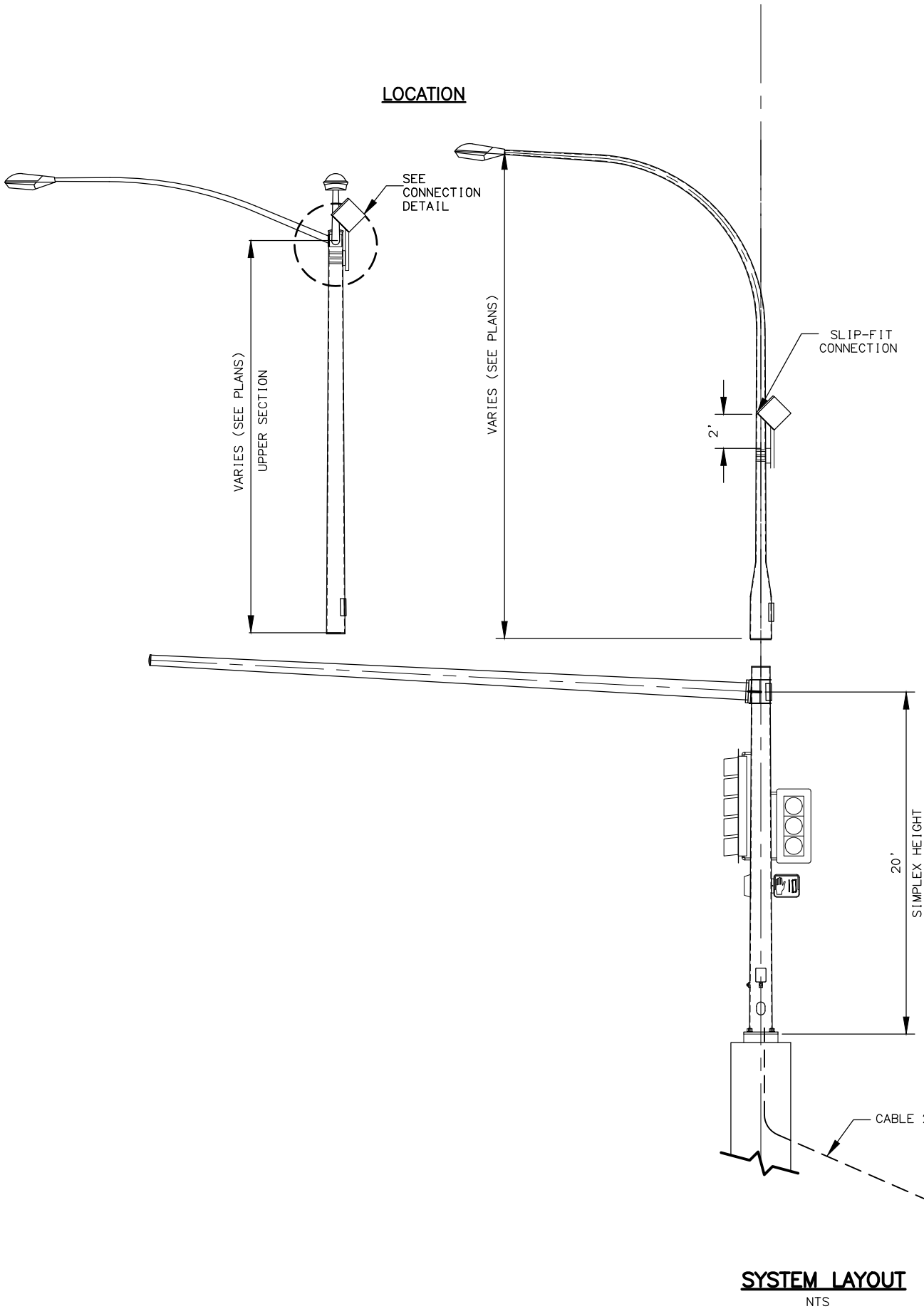


NO.	DATE	REVISION	STATE	PROJECT DESIGNATION	YEAR	SHEET NO.	TOTAL SHEETS
			ALASKA	XXXXXXXX/XXXXXXXXXXXX	20XX	H##	HXX

NOTES:

1. PROTECT CABLE ENDS FROM MOISTURE AT ALL TIMES.
2. PULL CABLE IN ACCORDANCE WITH SECTION 660 OF THE SPECIAL PROVISIONS. PULL CABLE SO THAT THERE IS SUFFICIENT LENGTH TO REACH THE TOP OF THE CONTROLLER CABINET. CABLES ARE TO BE PULLED WITHOUT CONNECTORS ATTACHED. WHEN CABLE HAS BEEN PULLED TO FINAL LOCATIONS INSTALL AND MAKE FINAL CONNECTIONS.
3. CABLE RUNS ARE TO BE MADE CONTINUOUS WITHOUT SPLICES EXCEPT FOR LOCATIONS APPROVED BY THE ENGINEER.
4. CABLE WITH DAMAGED INSULATION, OR THAT HAS BEEN CRIMPED OR BENT BEYOND THE MINIMUM BEND RADIUS MUST BE REPLACED AT NO ADDITIONAL COST.
5. THE CABLE BEND RADIUS SHALL NOT EXCEED MANUFACTURERS RECOMMENDATIONS.
6. ENSURE ADEQUATE LENGTH OF EACH CABLE TO ALLOW WORK ON THE ENDS OF THE CABLE IN THE CONTROLLER CABINET, AT THE MASTARM HANDHOLE AND ANTENNA MOUNTING LOCATION.
7. MOUNT ANTENNA AT REQUIRED HEIGHT. HEIGHT MAY BE ADJUSTED BY THE ENGINEER TO AVOID THE SLIP FIT CONNECTION OR OTHER HAZARDS.
8. INSTALL WATERTIGHT RUBBER GROMMITS WHERE CABLE PASSES THROUGH THE POLE.

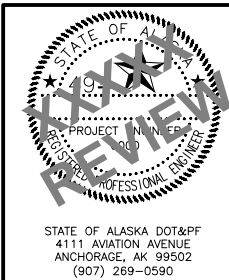
MATERIAL REQUIREMENTS	
ALL ASSEMBLIES	
MOUNTING BRACKET	PER MANUFACTURER
STEEL PIPE	2" NOM. GALVANIZED RMC
POLYPHASER	PER MANUFACTURER
CABLE 1	PER MANUFACTURER
CABLE 2	PER MANUFACTURER
CABLE 3	PER MANUFACTURER
CONNECTOR 1, 2	PER MANUFACTURER
CONNECTOR 3	PER MANUFACTURER
CONNECTOR 4	PER MANUFACTURER
CONNECTOR 5, 6	PER MANUFACTURER
HEAT SHRINK	PER MANUFACTURER
STRAIN RELIEF	REMKE 2201-013 OR APPROVED EQUAL
5.8 GHz ANTENNA	
ANTENNA	INTUICOM 5.8GHz INTEGRATED OR APPROVED EQUAL



5.8 GHz ANTENNA
(LUMINAIRE ARMS NOT SHOWN FOR CLARITY)

CONNECTION DETAIL

NTS



STATE OF ALASKA
DEPARTMENT OF TRANSPORTATION
AND PUBLIC FACILITIES

PROJECT TITLE
PROJECT TITLE

ANTENNA MOUNTING DETAIL