

DRAWING LOCATION: \\dot\sa\alaska\shared\ava\ts\projects\02-regional\details\cw30\ftp-masters\2021\format\20-cidh-wiring-and-grounding.dwg

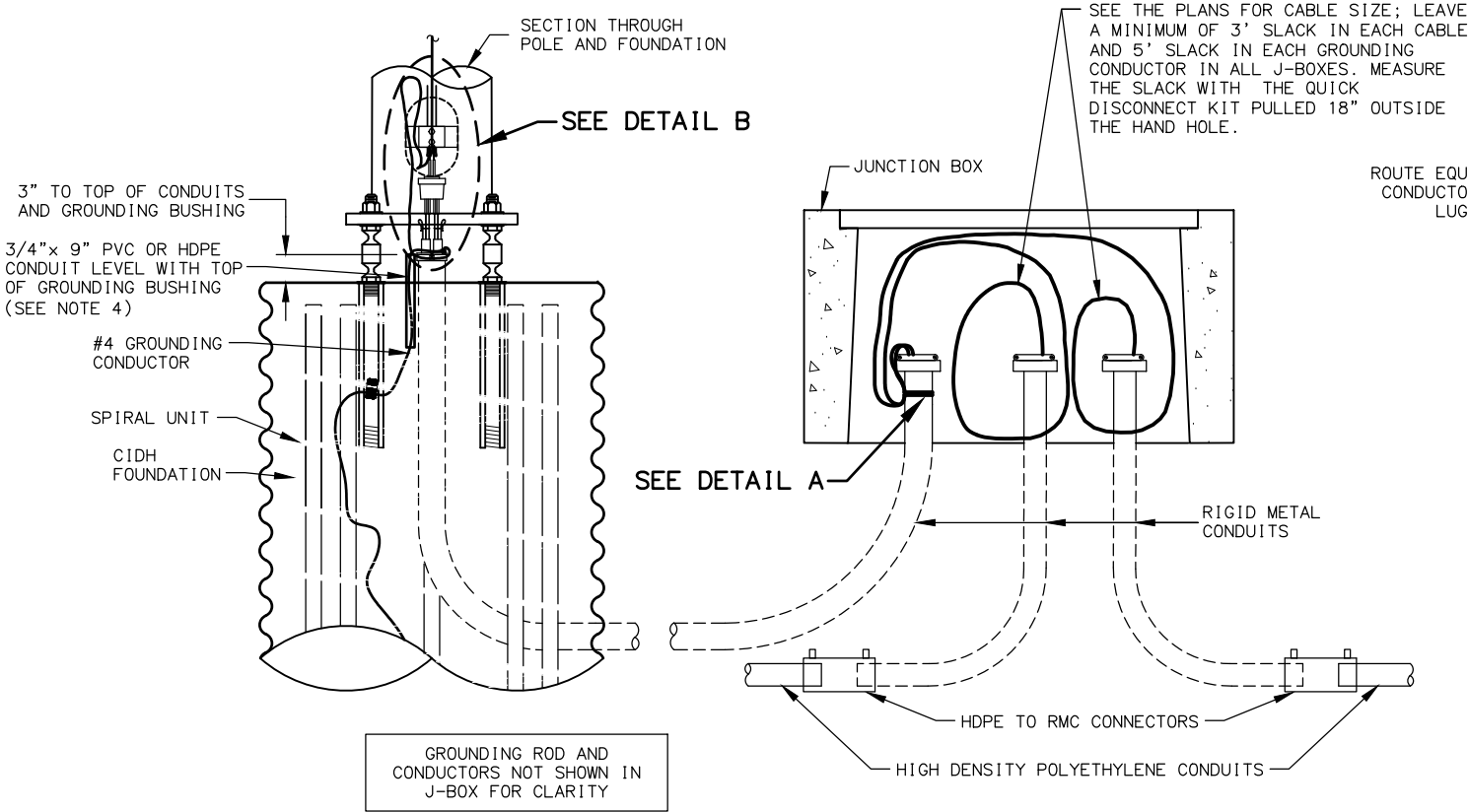
DESIGNED BY: ZJH
CHECKED BY: ROR
DRAFTED BY: MF

SCALE: X" = XX"
DATE: 3/27/2024
TIME: 11:31 AM

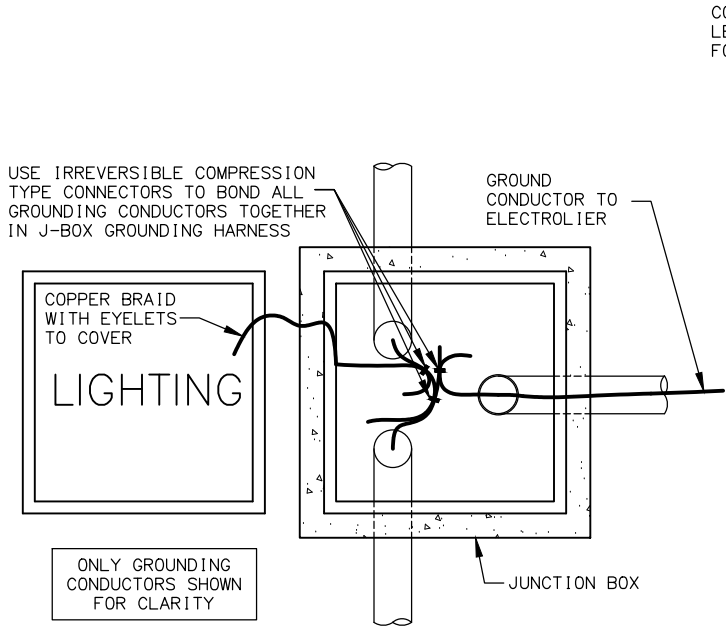
NO.	DATE	REVISION	STATE	PROJECT DESIGNATION	YEAR	SHEET NO.	TOTAL SHEETS
			ALASKA	XXXXXXXX/XXXXXXXXXX	20XX	H##	HXX

NOTES:

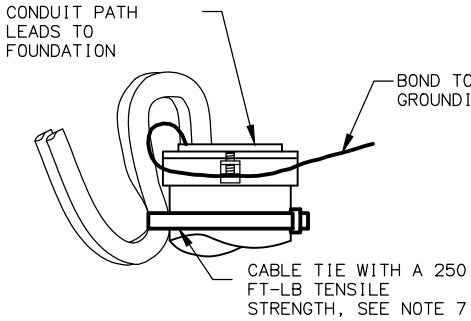
- APPLICATION FOR SLIP BASE IS THE SAME EXCEPT FOR BONDING. SEE SUBSECTION 660-3.06 FOR BONDING.
- LABEL ALL CABLES AND CONDUCTORS IN POLE BASE AND J-BOX. SEE SUBSECTION 660-3.05.
- MAKE ALL GROUNDING AND BONDING WIRE #8 AWG, EXCEPT IN THOSE CONDUITS THAT CONTAIN CIRCUIT CONDUCTORS LARGER THAN #8 AWG. IN THIS CASE USE WIRE EQUAL IN SIZE TO THE LARGEST CONDUCTOR. THE GROUNDING ELECTRODE CONDUCTOR TO THE CONCRETE-ENCASED ELECTRODE IN THE FOUNDATION SHALL BE #4 AWG.
- USE LISTED IRREVERSIBLE COMPRESSION TYPE CONNECTORS SIZED FOR EACH APPLICATION AND INSTALLED PER MANUFACTURERS SPECIFICATIONS.
- PROTECT GROUND WIRE WITH 3/4" PVC OR HDPE CONDUIT TO 6" BELOW TOP OF FOUNDATION FILLED WITH SILICONE SEALANT.
- WHEN PLANS INDICATE TWO FIXTURES ARE TO BE INSTALLED ON A SINGLE POLE, INSTALL A SECOND DOUBLE FUSED QUICK DISCONNECT KIT. USE TWO 12" (MAX.) JUMPER CABLES INSTALLED ON THE LINE SIDE OF THE FUSES AND SIZE THE JUMPER CABLES TO MATCH THE CABLES ENTERING THE FOUNDATION. EACH FIXTURE SHALL BE POWERED THROUGH A DEDICATED DOUBLE FUSED QUICK DISCONNECT KIT.
- CONDUCTOR BENDS MUST BE MADE SO AS NOT TO DAMAGE THE CABLE. DO NOT BEND BEYOND THE CABLE'S MINIMUM BEND RADIUS. USE 3.5" MINIMUM BEND RADIUS FOR 3C8 & 3C6 TYPE TC NON-SHEATHED CABLES.



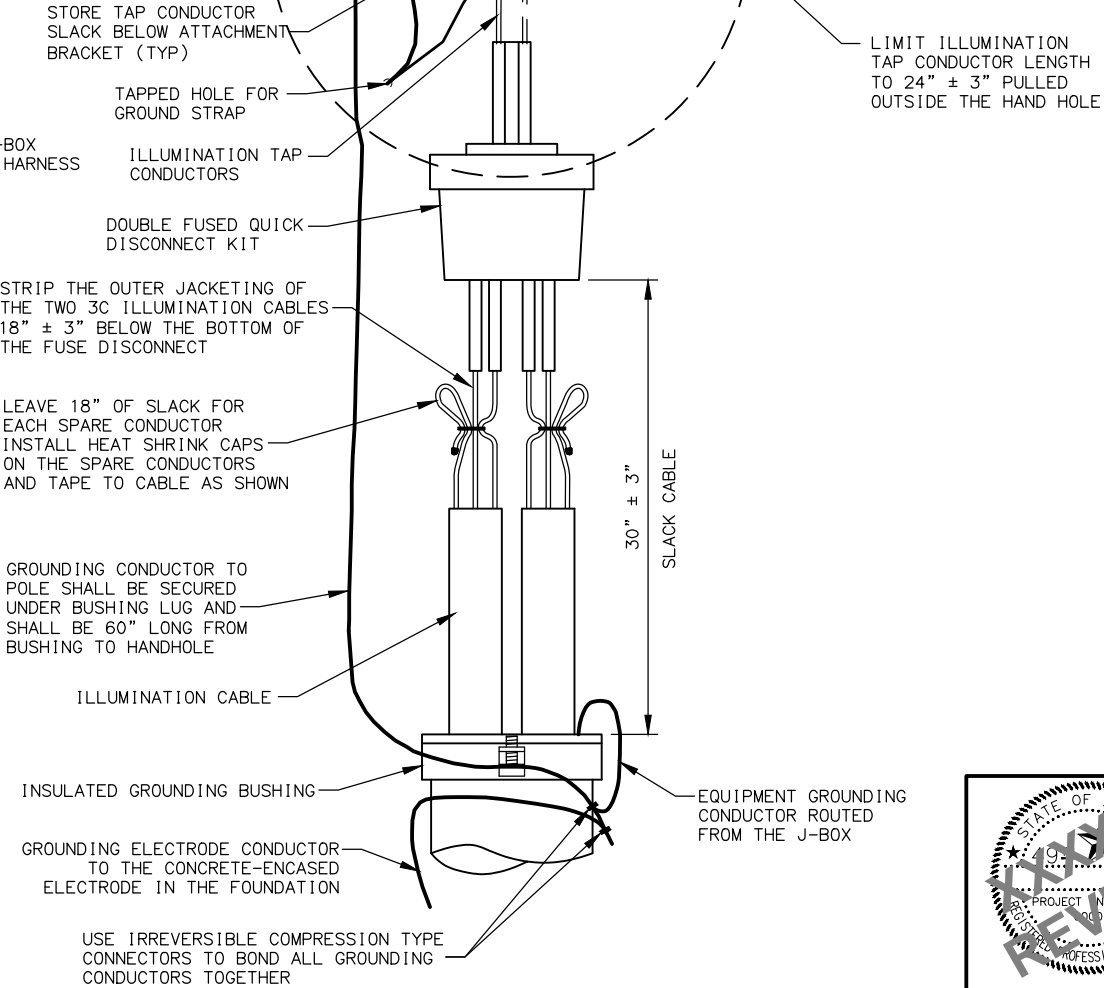
LIGHTING SYSTEM POLE AND J-BOX WIRING DETAILS



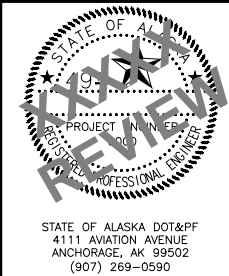
GROUNDING CONDUCTOR BONDING CONNECTIONS



DETAIL A



DETAIL B



STATE OF ALASKA
DEPARTMENT OF TRANSPORTATION
AND PUBLIC FACILITIES

PROJECT TITLE
PROJECT TITLE

CIDH FOUNDATION POLE WIRING
AND GROUNDING DETAILS

STATE OF ALASKA DOT&PF
4111 AVIATION AVENUE
ANCHORAGE, AK 99502
(907) 269-0590