

DRAWING LOCATION
\\dot\sa\alaska\00\shared\ava\ts\projects\02-regional details\cwsd\ftp-masters\2021\format\16-school-beacon.dwg

DATE
3/27/2024 11:31 AM

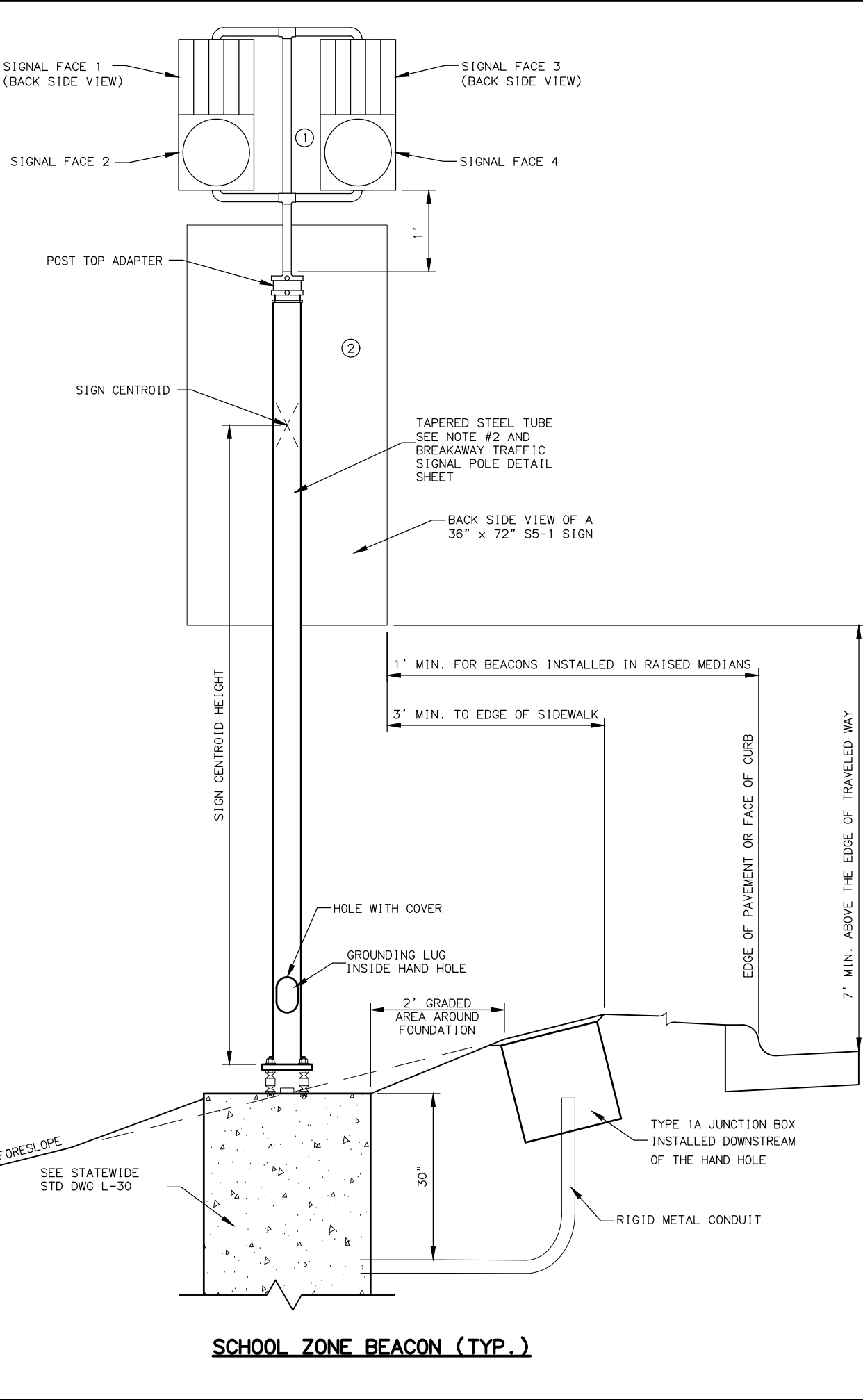
TIME
11:31 AM

SCALE
X" = XX'

DESIGNED BY
ZJH

CHECKED BY
RJR

DRAFTED BY
MF

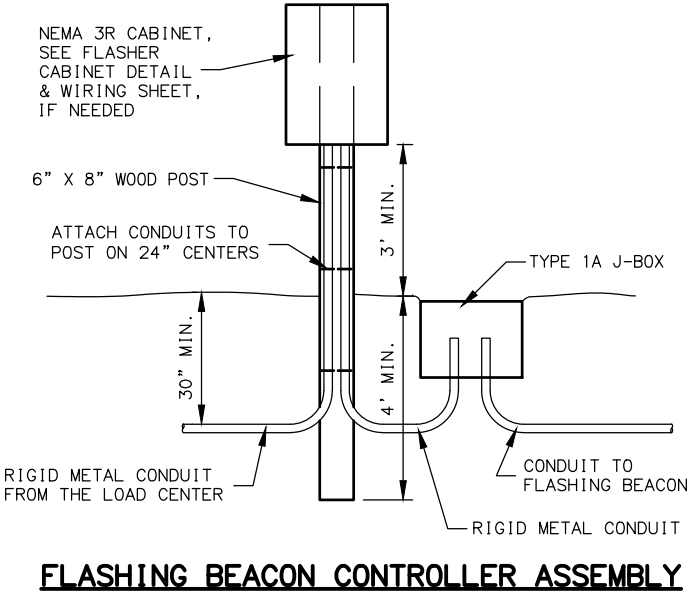


SCHOOL ZONE BEACON (TYP.)

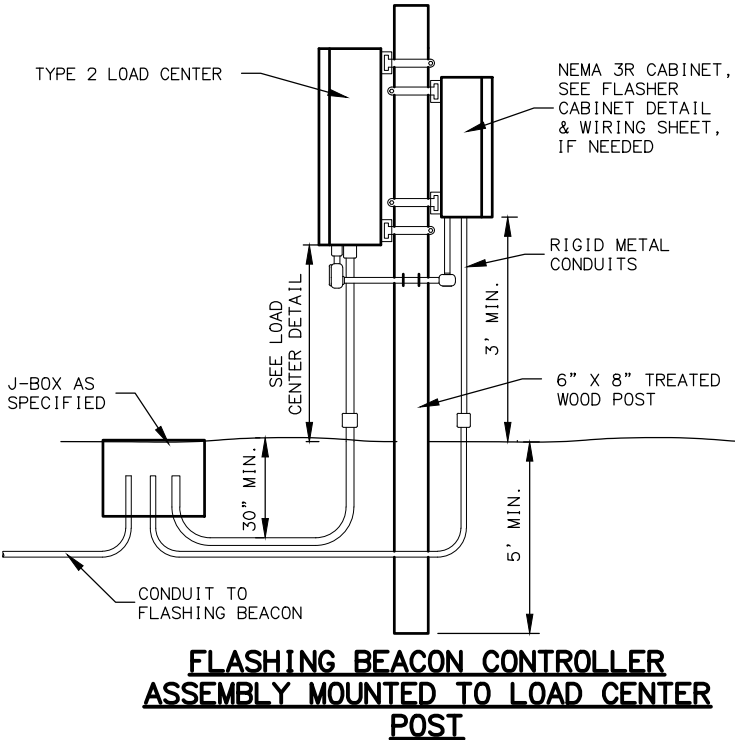
NO.	DATE	REVISION	STATE	PROJECT DESIGNATION	YEAR	SHEET NO.	TOTAL SHEETS
			ALASKA	XXXXXXXX/XXXXXXXXXX	20XX	H##	HXX

- NOTES:**
- FURNISH BEACON POSTS THAT PROVIDE A 7' DIFFERENCE IN ELEVATION BETWEEN THE BOTTOM OF THE SIGN AND THE EDGE OF TRAVELED WAY. OFFSET CONDITIONS NOT SHOWN ON THIS DRAWING SHALL BE INSTALLED PER STANDARD DRAWING S-05.
 - EQUIP BEACON POSTS WITH FRANGIBLE COUPLING BASES. INSTALL MODEL 5100 BREAK-SAFE BASES FROM TRANSPO INDUSTRIES OR AN APPROVED EQUAL.
 - FURNISH BEACON POSTS AND PED. POLES HOT-DIP GALVANIZED ACCORDING TO AASHTO M111M.
 - EACH FLASHING SIGNAL HEAD SHALL CONSIST OF FOUR 12" SIGNAL FACES WITH AMBER L.E.D.S AND TUNNEL TYPE VISORS.
 - WIRE SIGNAL FACES 1 AND 2 ON FLASHER CIRCUIT 1 AND SIGNAL FACES 3 AND 4 ON FLASHER CIRCUIT 2.

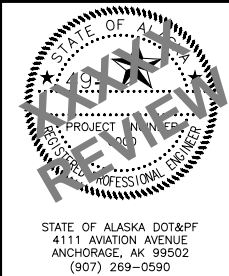
POLE DESIGN LOADING		
LOAD COMPONENT	EFFECTIVE AREA SQ. FT.	WEIGHT LBS.
1 = FLASHING BEACONS	4.4	60
2 = SIGN	18	30



FLASHING BEACON CONTROLLER ASSEMBLY



FLASHING BEACON CONTROLLER ASSEMBLY MOUNTED TO LOAD CENTER POST



STATE OF ALASKA
DEPARTMENT OF TRANSPORTATION
AND PUBLIC FACILITIES

PROJECT TITLE
PROJECT TITLE

FLASHING SCHOOL BEACON
DETAILS

STATE OF ALASKA DOT&PF
4111 AVIATION AVENUE
ANCHORAGE, AK 99502
(907) 269-0590