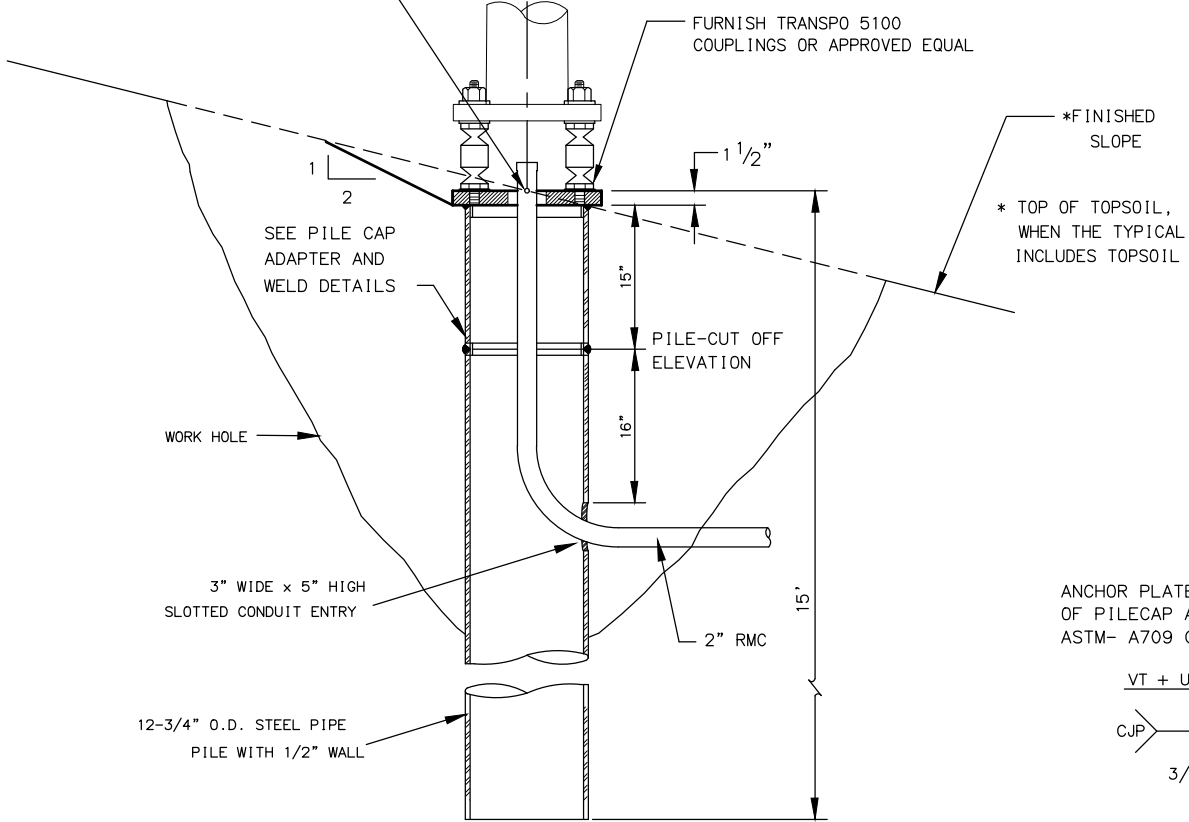
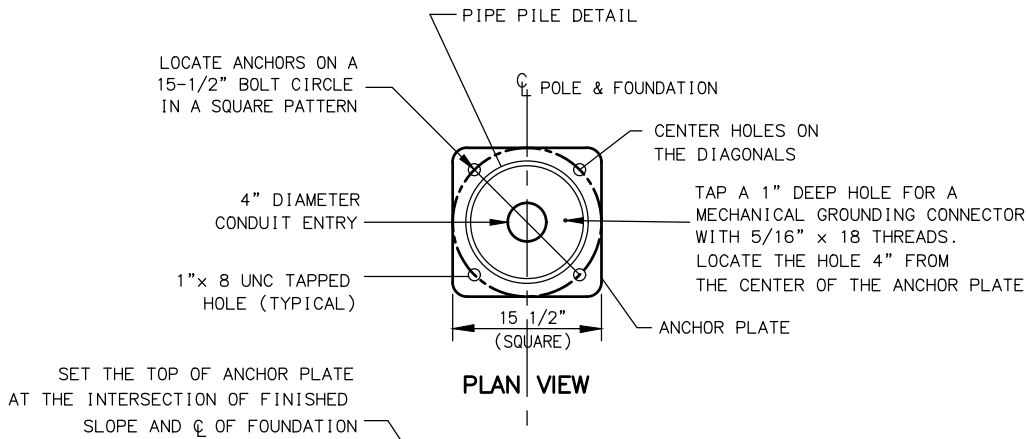


DRAWING LOCATION: \\dot\soa\alaska\shared\aviatse\projects\02 REGIONAL DETAILS\civ3d\ftp_masters\2021\format\10-PIPE_PILE_FOUNDATION.DWG

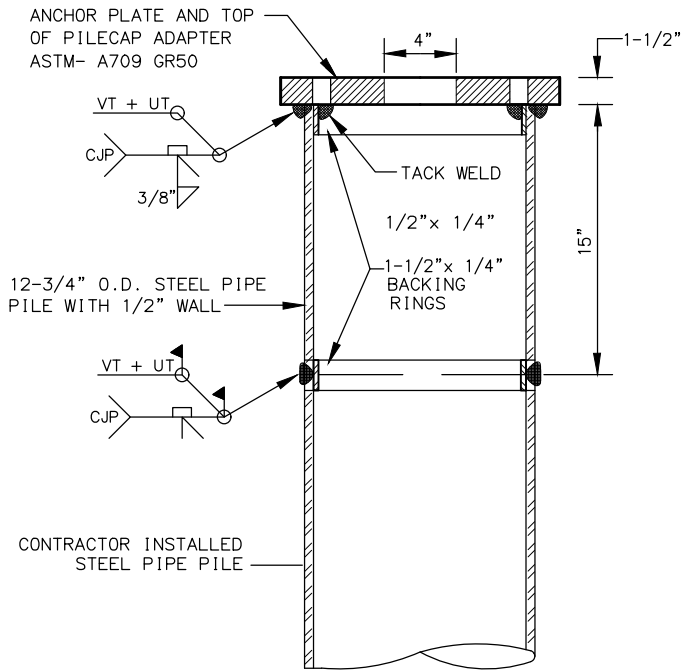
DESIGNED BY: ZJH
CHECKED BY: RDR
DRAFTED BY: MF

SCALE: 1" = 10'
DATE: 3/27/2024
TIME: 11:30 AM

NO.	DATE	REVISION	STATE	PROJECT DESIGNATION	YEAR	SHEET NO.	TOTAL SHEETS
			ALASKA	XXXXXXXX/XXXXXXXXXXXX	20XX	H##	HXX



PIPE PILE FOUNDATION
(SHOWN WITH FRANGIBLE COUPLINGS)



PILECAP ADAPTER AND WELD DETAILS
NOT TO SCALE

DESIGN NOTES:

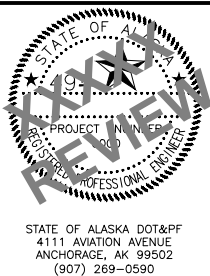
- DESIGN STANDARD: 2001 STANDARD SPECIFICATIONS FOR STRUCTURAL SUPPORTS FOR HIGHWAY SIGNS, LUMINAIRE AND TRAFFIC SIGNALS WITH 2006 INTERIM.
- DESIGN LOADS: 5-KIPS AXIAL, 7.5-KIPS SHEAR, 40-KIP-FT MOMENT.
- GALVANIZATION OF PILE IS NOT REQUIRED. UNLESS THE GROUND WATER TABLE IS FOUND TO BE, ABOVE 5 FEET, THEN GALVANIZE PILE ACCORDING TO SECTION 505.
- CHARPY TEST FOR ELECTROLIER POLE PILE FOUNDATIONS ARE NOT REQUIRED.

MATERIAL REQUIREMENTS

STRUCTURAL STEEL PLATE	ASTM A709 GRADE 50	Fy = 50 ksi
STEEL PIPE PILE	ASTM A709, GRADE 50 T3 API 5L GRADE X 42	Fy = 50 ksi Fy = 42 ksi

NOTES:

- FURNISH STEEL PIPE PILES THAT CONFORM TO THE MATERIAL REQUIREMENTS AND SECTION 660, 715 AND 740 OF THE SPECIFICATIONS. NO SPLICES ARE ALLOWED BELOW THE PILECAP ADAPTER.
- DRIVE PILES OPEN ENDED. COMPLETE PILE WORK ACCORDING TO SECTIONS 505, 660 AND 715 OF THE SPECIFICATIONS. REMOVE AND REINSTALL PILES OUT OF PLUMB MORE THAN 1:40.
- FRESH HEAD THE TOP OF PILES IN A LEVEL PLANE AND CUT THE CONDUIT ENTRANCE HOLE AFTER DRIVING THE PILE. NOTE; ONLY MECHANICAL OR PLASMA CUTTER MEANS ARE PERMITTED. OXY-FUEL CUTTING IS PROHIBITED.
- FURNISH ONLY SHOP FABRICATED PILECAP ADAPTERS. INCLUDE STAMPED ENGINEERING CALCULATIONS, DRAWINGS, MILL CERTIFICATIONS AND WELDING PLANS FOR PILECAP ADAPTERS AND THE PILECAP ADAPTER TO PILE WELD. WELDING SHALL CONFORM TO THE REQUIREMENTS OF THE LATEST EDITION OF THE AWS D1.1, STRUCTURAL WELDING CODE-STEEL AND THE SPECIFICATIONS.
- WAIT AT LEAST 3 DAYS AFTER BACKFILLING THE WORK HOLE BEFORE ERECTING THE LUMINAIRE POLE.
- TERMINATE CONDUIT(S) 3" ABOVE THE TOP OF THE ANCHOR PLATE. INSTALL A GROUNDING BUSHING ON THE END OF THE RIGID METAL CONDUIT AND ESTABLISH A BOND WITH THE ANCHOR PLATE.



STATE OF ALASKA
DEPARTMENT OF TRANSPORTATION
AND PUBLIC FACILITIES

PROJECT TITLE
PROJECT TITLE

ELECTROLIER PIPE PILE
FOUNDATION AND BREAKAWAY
SUPPORT DETAILS

STATE OF ALASKA DOT&PF
4111 AVIATION AVENUE
ANCHORAGE, AK 99502
(907) 269-0590