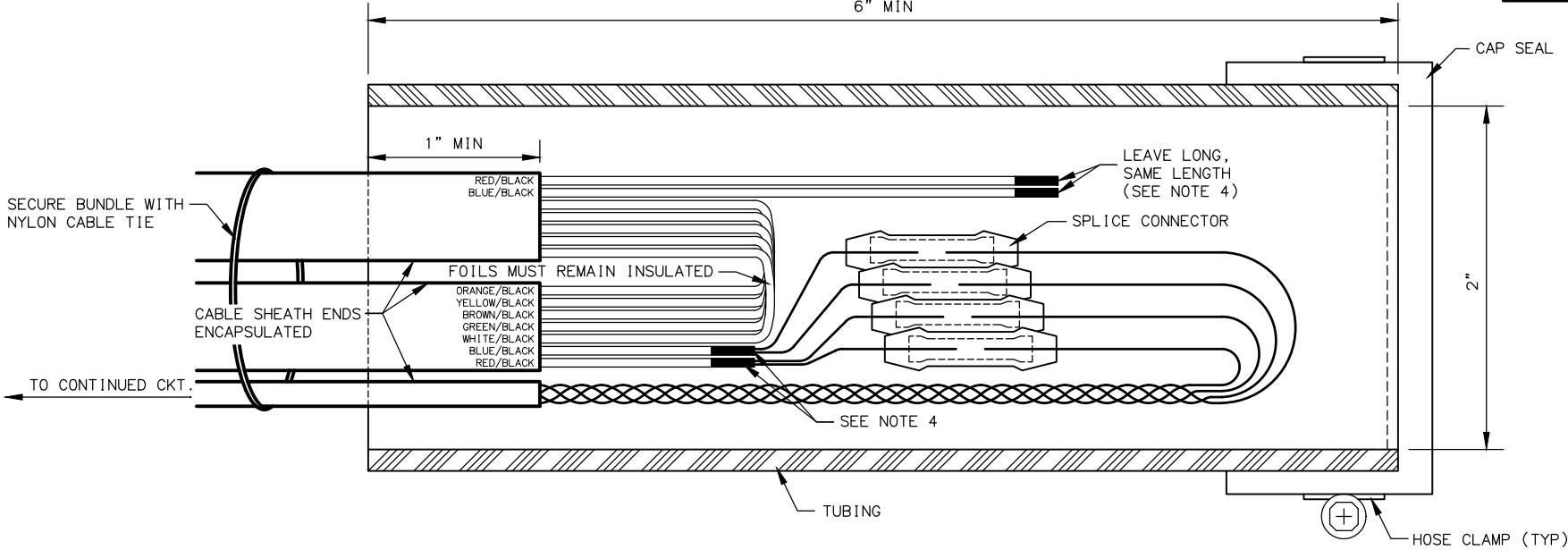
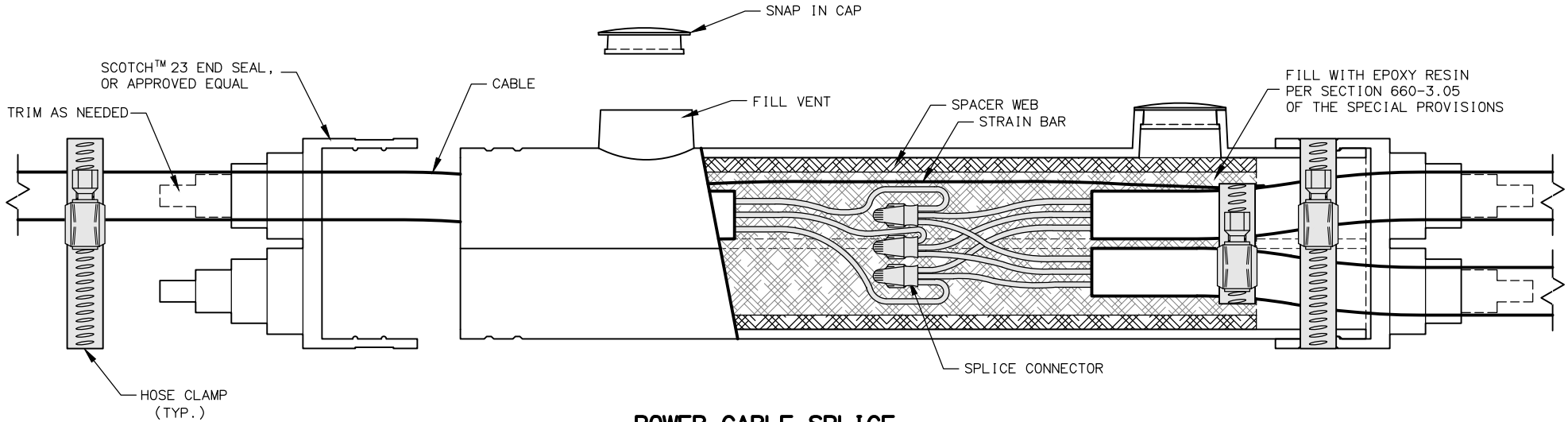


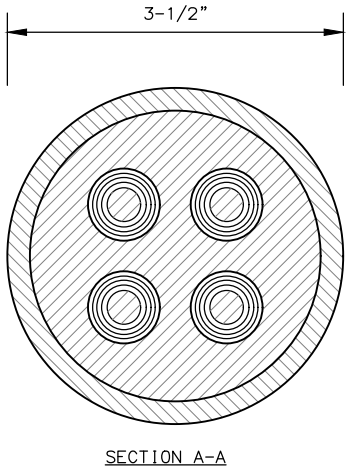
NO.	DATE	REVISION	STATE	PROJECT DESIGNATION	YEAR	SHEET NO.	TOTAL SHEETS
			ALASKA	XXXXXXXX/XXXXXXXXXX	20XX	H##	HXX



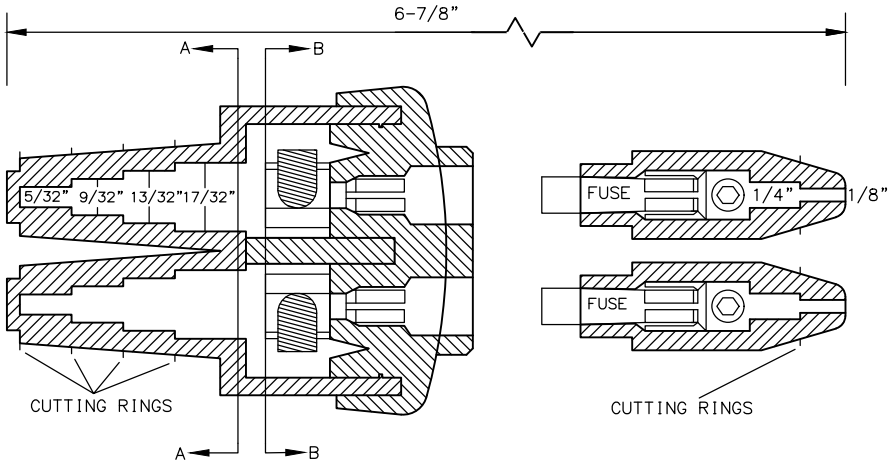
LOOP LEAD-IN SPLICE



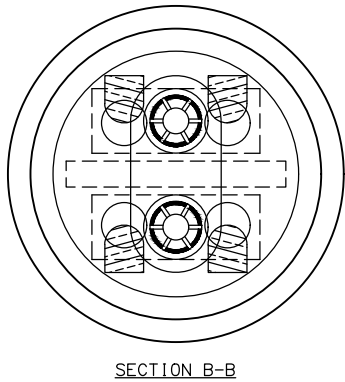
POWER CABLE SPLICE



SECTION A-A



DOUBLE FUSED CONNECTOR

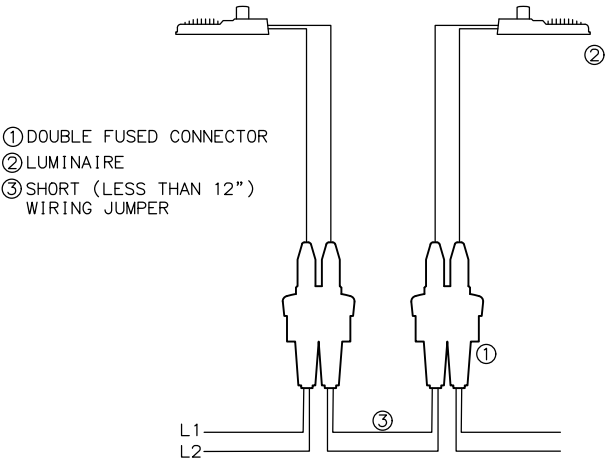


SECTION B-B

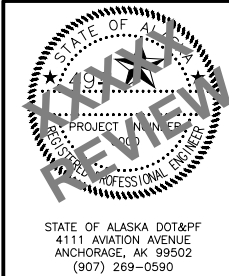
NOTES:

- LOOP LEAD-IN SPLICE
- FABRICATE LOOP LEAD-IN SPLICE IN THE FIELD AS SHOWN.
  - CAP SEAL ONE END AND COMPLETELY FILL OPEN END WITH RE-ENTERABLE ENCAPSULATION COMPOUND TO EDGE OF TUBING.
  - LEAVE A MINIMUM OF 1/2" CLEARANCE BETWEEN THE ENCLOSURE AND THE SPLICE AT BOTH ENDS OF THE TUBING.
  - EXPOSE FOIL AND DRAIN WIRES, SEAL WITH HEAT SHRINK TUBING (TYP).
  - INSTALL SPLICE CONNECTORS ACCORDING TO MANUFACTURER'S SPECIFICATIONS.
- POWER CABLE SPLICE
- SECURE CABLE/CONNECTOR BUNDLE WITH HOSE CLAMPS AS SHOWN.

MATERIAL PROPERTIES	
LOOP LEAD-IN SPLICE	
TUBING	PER SECTION 660-3.05
CAP SEAL	FERNCO QWIK CAP #QC-102, OR APPROVED EQUAL
HOSE CLAMP	STAINLESS STEEL
SPLICE CONNECTOR	ML56-16, OR APPROVED EQUAL
COMPOUND	RE-ENTERABLE ENCAPSULATION
POWER CABLE SPLICE	
SPLICE KIT	3M MODEL 78R, OR APPROVED EQUAL
SPLICE CONNECTOR	SCOTCHLOCK G, R, OR Y SPRING CONNECTOR, OR APPROVED EQUAL
HOSE CLAMP	(4)- STAINLESS STEEL
EPOXY RESIN	PER SECTION 660-3.05
DOUBLE FUSED CONNECTOR	
DOUBLE FUSED CONNECTOR	SEC-1791-DF-1, OR APPROVED EQUAL
FUSES	(2) - COMPATIBLE 5-AMP TIME DELAY TYPE FOR LED FIXTURE OR 10-AMP FAST ACTING FOR ALL OTHER FIXTURES



DUAL LUMINAIRE WIRING DIAGRAM



STATE OF ALASKA  
DEPARTMENT OF TRANSPORTATION  
AND PUBLIC FACILITIES  
PROJECT TITLE  
PROJECT TITLE

SPLICE DETAILS