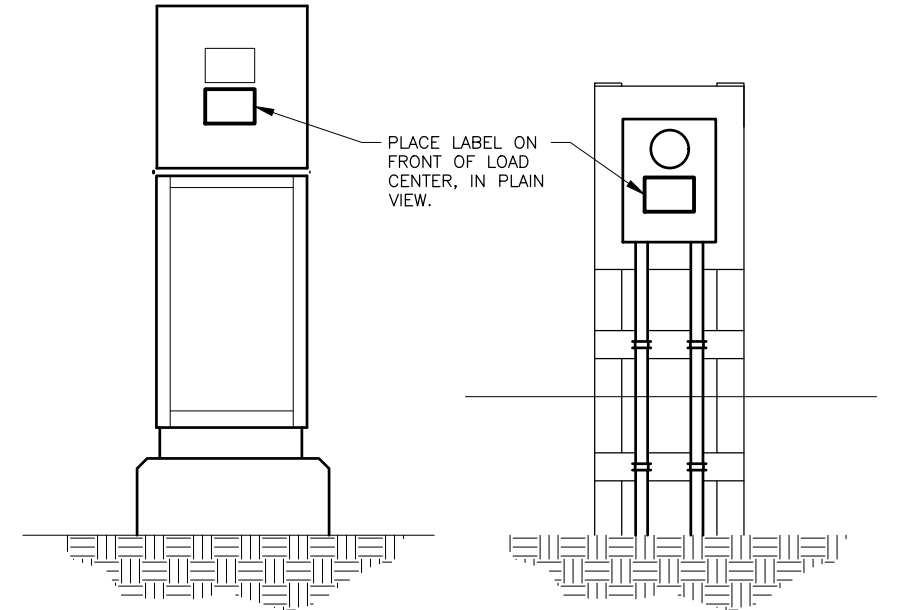
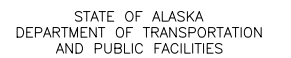


DATE	TIME	SCALE	DESIGNED BY	ZJH
3/27/2024	11:30 AM	X" = XX'	CHECKED BY	RDR
			DRAFTED BY	MF

1. APPLICABLE STATE OF ALASKA DOT&PF ELECTRICAL EQUIPMENT MUST BE LABELED WITH DOT&PF-DEFINED SITE-SPECIFIC PPE LEVELS, AS DEFINED IN NFPA 70E 130.5(H)(3)(c). THE LEVELS ARE: LEVEL 1 (0 TO 4 CAL/CM²), 2 (4.1 TO 8.0 CAL/CM²), 3 (8.1 TO 25.0 CAL/CM²), 4 (25.1 TO 39.9 CAL/CM²), OR WP (WORK PROHIBITED, FOR EQUIPMENT IN WHICH THE CALCULATED ARC FLASH INCIDENT ENERGY IS ≥ 40 CAL/CM²).
2. MINIMUM PPE REQUIREMENTS FOR EACH PPE LEVEL DESCRIBED IN NOTE 1 ARE THE SAME REQUIREMENTS AS DESCRIBED IN NFPA 70E TABLE 130.7(C)(15)(c). THESE PPE REQUIREMENTS ARE TO BE USED AS THE SITE-SPECIFIC PPE LEVELS.
3. PROVIDE DESCRIPTION OF EQUIPMENT CONFIGURATIONS IN WHICH A HAZARD EXISTS. FOR EXAMPLE "WHEN COVER REMOVED."
4. INSERT INFORMATION FROM PLAN SHEETS. REFER TO LOAD CENTER SUMMARY, ARC FLASH AND SHOCK HAZARD RESULTS, AND SHORT CIRCUIT CALCULATION TABLES PRESENTED IN THE PLANS FOR EACH LOAD CENTER.
5. FOR LOAD CENTERS INSTALLED WITHIN THE MUNICIPALITY OF ANCHORAGE, INSTALL A UTILITY INFORMATION LABEL ON THE EXTERIOR OF THE LOAD CENTER PER THE REQUIREMENTS OF THE MUNICIPALITY OF ANCHORAGE STANDARD SPECIFICATIONS (MASS) AND THE CEA ELECTRIC SERVICE REQUIREMENTS (ESR). LABEL MATERIALS SHALL BE 3M SCOTCHCAL 220 OR OTHER APPROVED EQUAL. LABEL SHALL BE IN PLACE PRIOR TO GREEN TAG INSPECTION. THE UTILITY INFORMATION LABEL SHALL INCLUDE THE FOLLOWING:
 - 5.1. LOAD CENTER OWNER: "MOA" OR "SOA"
 - 5.2. LOAD CENTER USAGE: "TS" FOR SIGNALIZATION, "LU" FOR LIGHTING AND OTHER USES
 - 5.3. LOAD CENTER VOLTAGE: "120/240" OR "240/480"



LABEL LOCATION



PROJECT	TITLE
PROJECT	TITLE

ARC FLASH AND SHOCK HAZARD LABELING DETAILS