

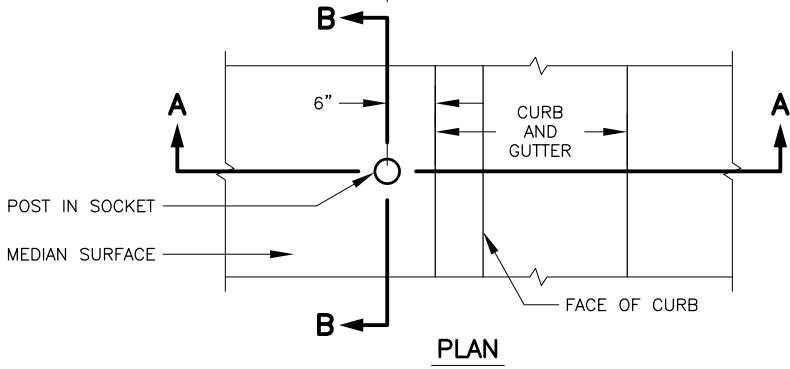
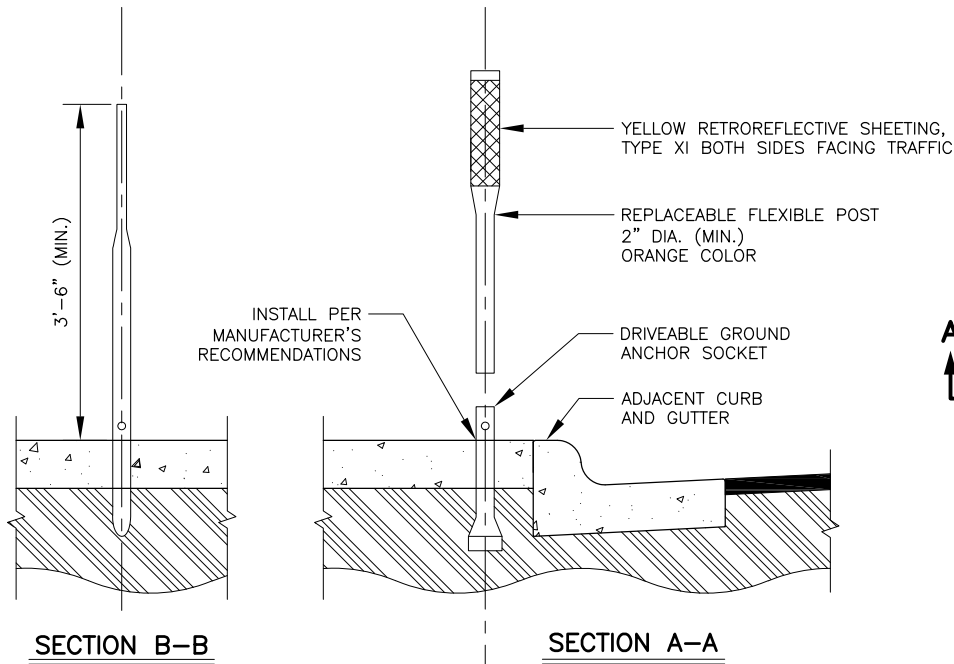
DESIGNED BY  
CHECKED BY  
DRAFTED BY

SCALE

DATE  
12/21/2020 12:10 PM

DRAWING LOCATION  
L:\HIGHWAY\DESIGNMASTERS\AUTOCAD\REGIONALDETAILS\2016\HIGHWAYS\SLOPED MEDIAN DETAIL\_C3D19\_IN\_PROGRESS.DWG

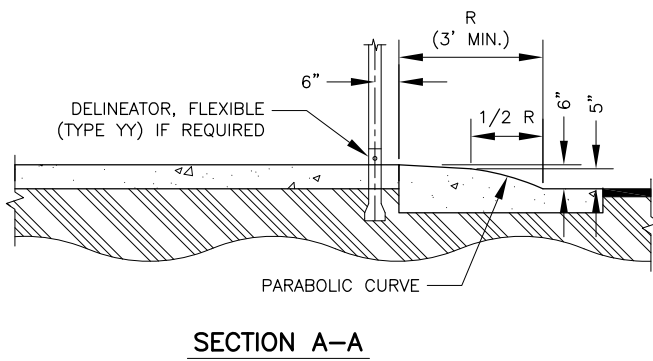
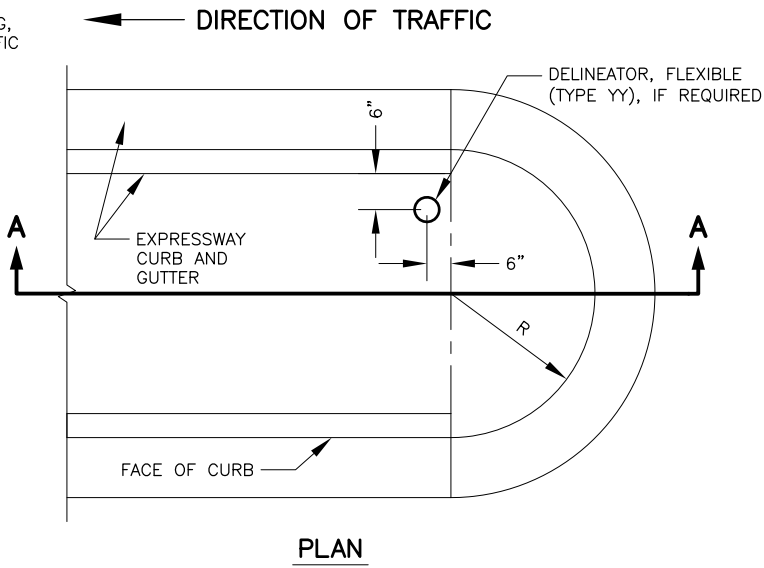
NO.	DATE	REVISION	STATE	PROJECT DESIGNATION	YEAR	SHEET NO.	TOTAL SHEETS
			ALASKA	XXXXXXXX/XXXXXXXXXX	20XX	LAYOUT	



### FLEXIBLE DELINEATOR

#### DELINEATOR NOTES:

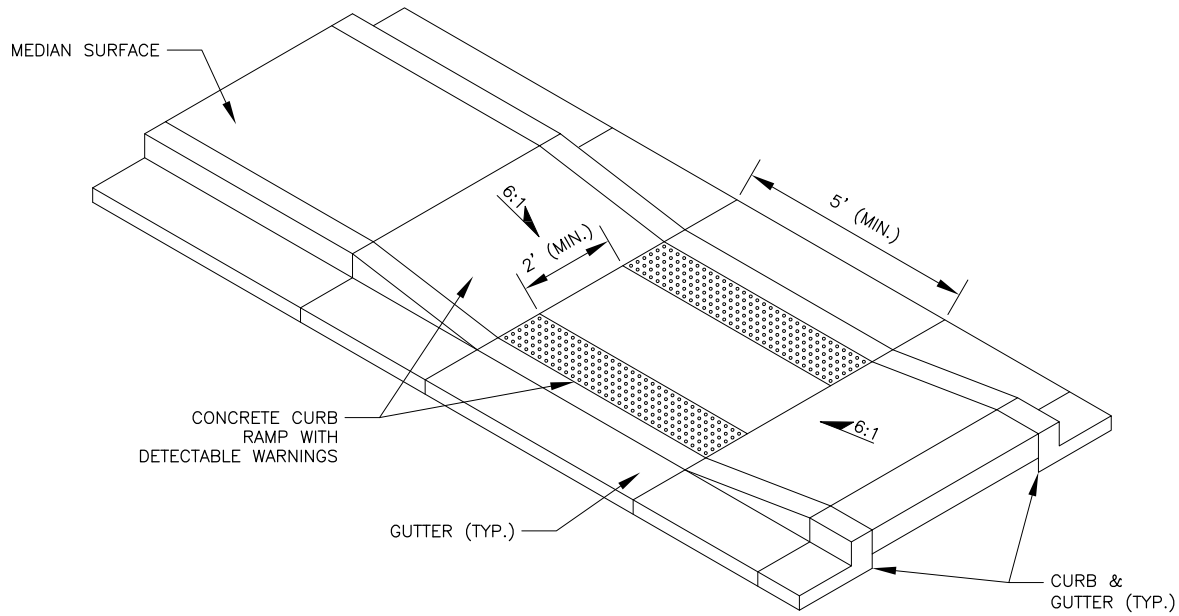
1. INSTALL DELINEATORS WHERE SHOWN IN THE SUMMARY TABLE, OR AS DIRECTED BY THE ENGINEER.
2. CENTER POINT OF THE DELINEATOR SHALL BE 6 INCHES FROM THE BACK OF CURB.
3. WHERE DELINEATORS ARE SET IN CONCRETE PAVEMENT, PLACE THEM IN EXPANSION JOINTS.



### SLOPED MEDIAN NOSE

#### SLOPED MEDIAN NOTES:

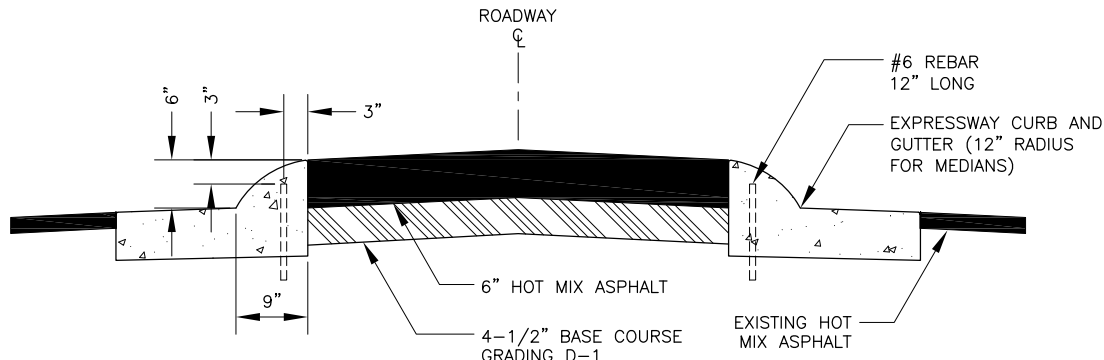
1. PAINT ALL SLOPED MEDIAN NOSES WITH YELLOW REFLECTORIZED PAINT. PAINT FOR NOSES IS SUBSIDIARY TO 670 ITEMS.
2. THE RADIUS DIMENSIONS PROVIDED IN THE PLANS ARE MEASURED TO LIP OF CURB. CONTRACTOR WILL NEED TO CALCULATE THE VALUE OF "R" FROM RADIUS DIMENSION AND CURB GEOMETRY.



### RAISED MEDIAN CURB RAMP

#### RAISED MEDIAN NOTES:

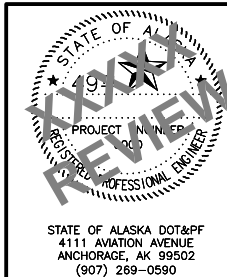
1. INSTALL DETECTABLE WARNING TILES IN ACCORDANCE WITH STD. DWG I-21.



### EXPRESSWAY RAISED MEDIAN

#### EXPRESSWAY MEDIAN NOTES:

1. REBAR SHALL BE 60-INCHES O.C. EXCEPT AT ENDS OF MEDIANS WHERE SPACING SHALL BE 30-INCHES O.C.
2. EPOXY CEMENT SHALL NOT BE SUBSTITUTED FOR NO. 6 VERTICAL REBAR PINS.



STATE OF ALASKA  
DEPARTMENT OF TRANSPORTATION  
AND PUBLIC FACILITIES  
PROJECT TITLE  
PROJECT TITLE  
SLOPED MEDIAN NOSE  
DETAIL