

DRAWING LOCATION
L:\HIGHWAY\DESIGN\MASTERS\AUTOCAD\REGIONAL\DETAILS\2016\HIGHWAYS\REMOVABLE STEEL AND WOOD BOLLARD DETAIL_C3DT6_IN
PROCESSING

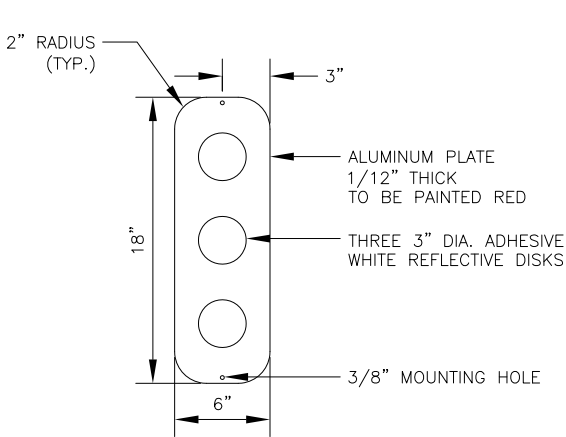
DESIGNED BY
CHECKED BY
DRAFTED BY

SCALE

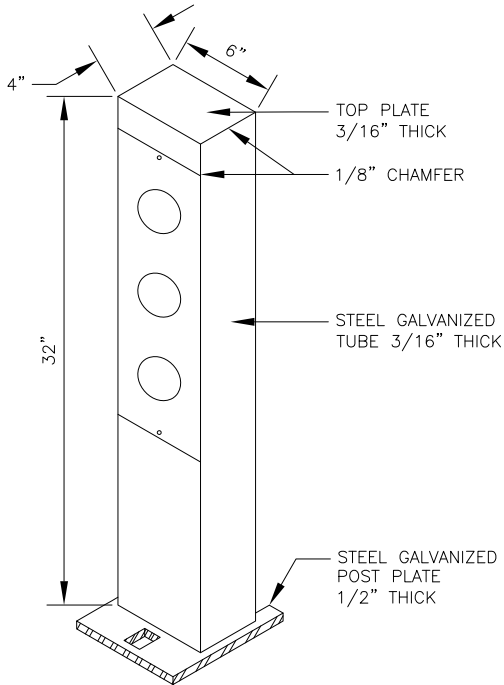
DATE
10/28/2020 9:49 AM

TIME

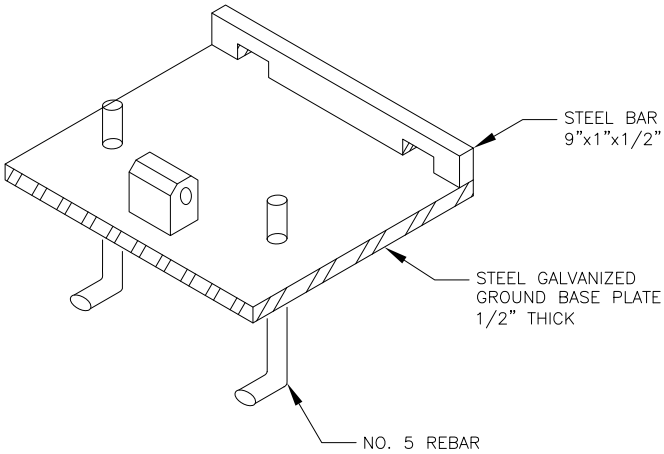
NO.	DATE	REVISION	STATE	PROJECT DESIGNATION	YEAR	SHEET NO.	TOTAL SHEETS
			ALASKA	XXXXXXXX/XXXXXXXXXXXX	20XX	LAYOUT 1	



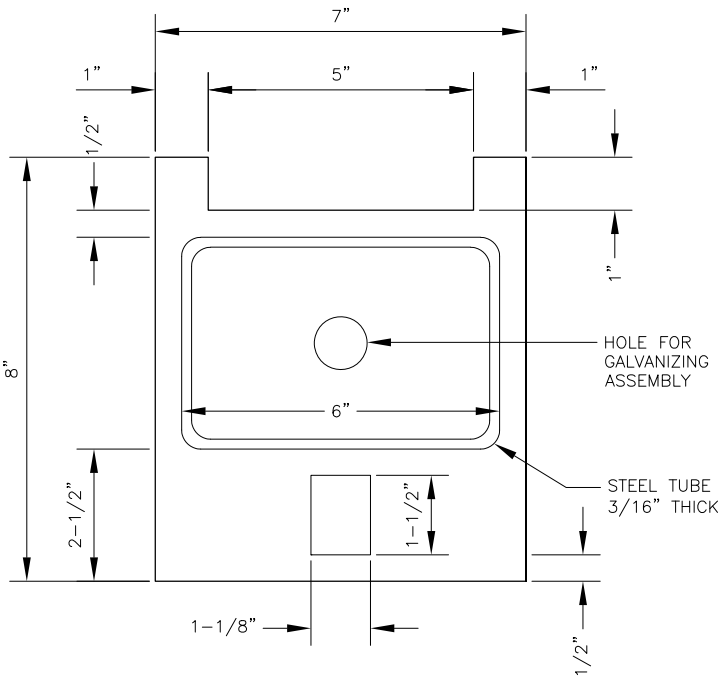
REFLECTOR PLATE



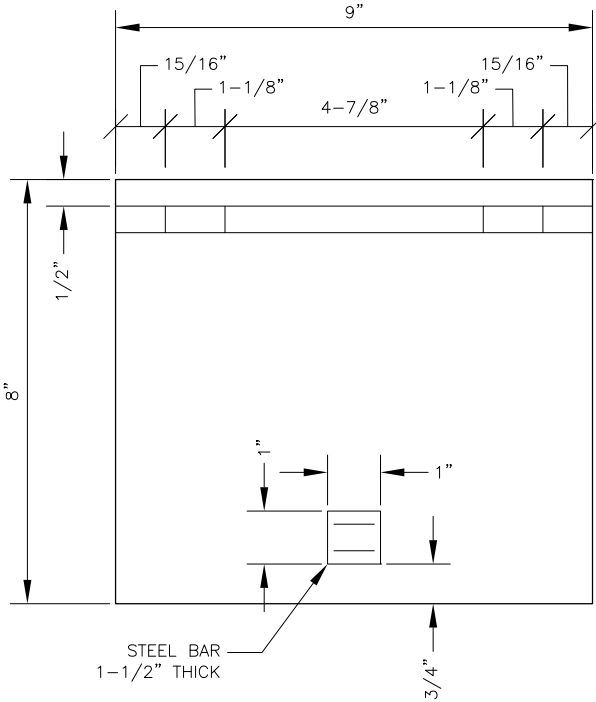
REFLECTOR PLATE AND STEEL POST



GROUND BASE PLATE (ISOMETRIC VIEW)



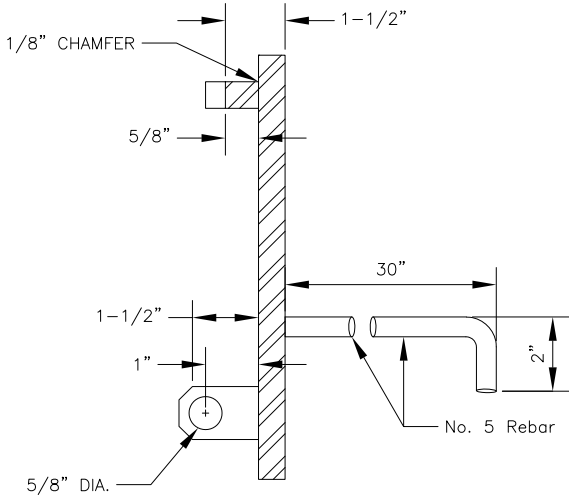
POST BASE PLATE



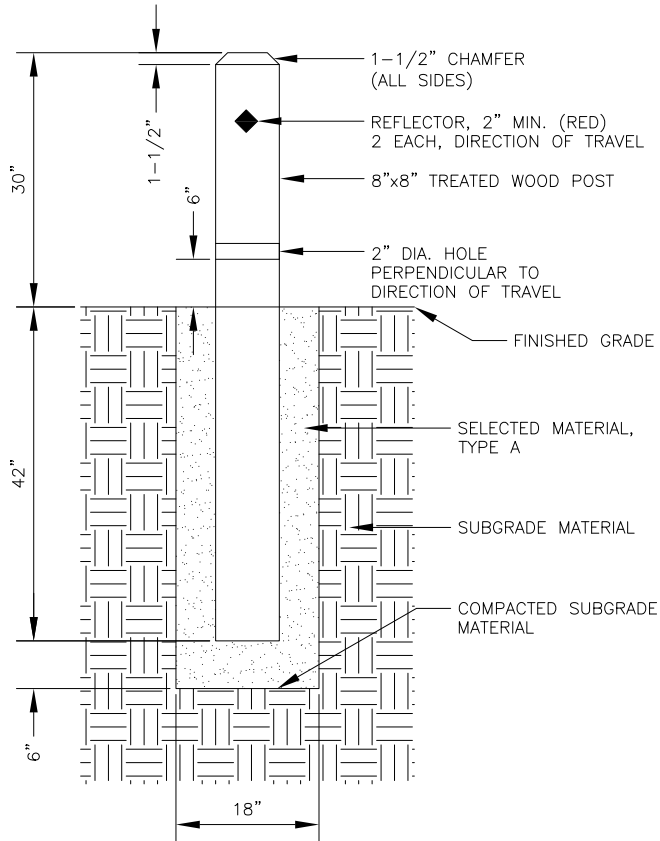
GROUND BASE PLATE

REMOVABLE STEEL BOLLARD NOTES:

1. ALL WELDS, UNLESS OTHERWISE SHOWN, SHALL BE 3/16-INCH FILLET ON ALL SIDES.
2. BOLLARDS SHALL BE CAST IN PLACE WITH TYPE 'A' CONCRETE IN A 12-INCH DIAMETER BY 36-INCH DEEP CONCRETE FOUNDATION TUBE.
3. ALL EXTERIOR CORNERS SHALL BE ROUNDED TO PROVIDE A PROJECTION FREE SURFACE.
4. INSTALL REFLECTOR PLATES WITH ADHESIVE DISK REFLECTORS ON BOTH FRONT AND BACK OF POST.
5. USE OF "OLD STYLE" STEEL SLEEVE WITH REMOVABLE WOOD BOLLARD IS PROHIBITED.

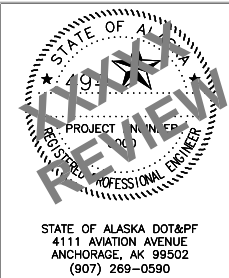


GROUND BASE PLATE (SIDE VIEW)



WOOD BOLLARD

DATE	###
###	----



STATE OF ALASKA
DEPARTMENT OF TRANSPORTATION
AND PUBLIC FACILITIES

PROJECT TITLE
PROJECT TITLE

REMOVABLE STEEL BOLLARD
AND WOOD BOLLARD DETAILS

STATE OF ALASKA DOT&PF
4111 AVIATION AVENUE
ANCHORAGE, AK 99502
(907) 269-0590