

DESIGNED BY  
CHECKED BY  
DRAFTED BY

SCALE

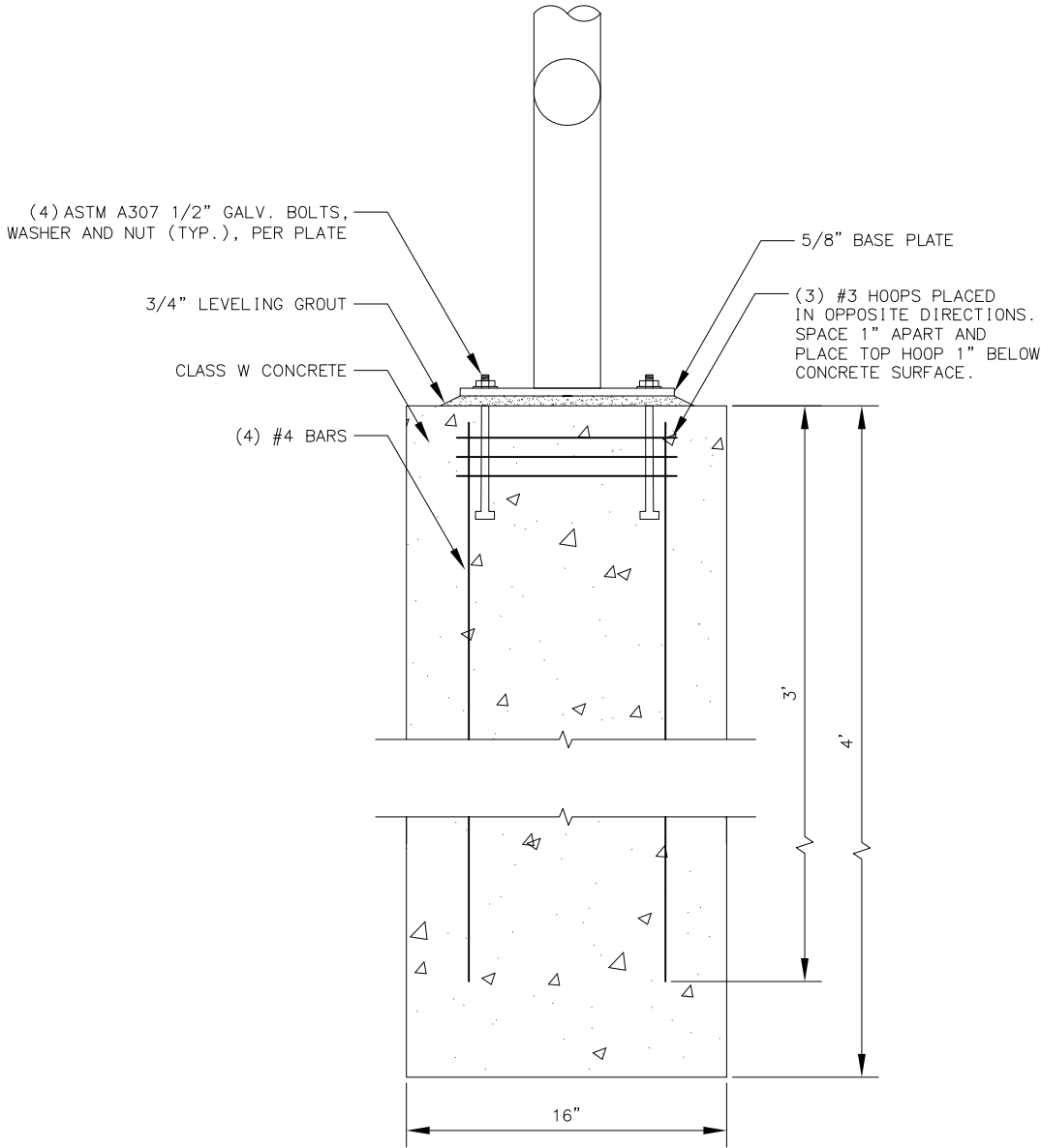
TIME

DATE

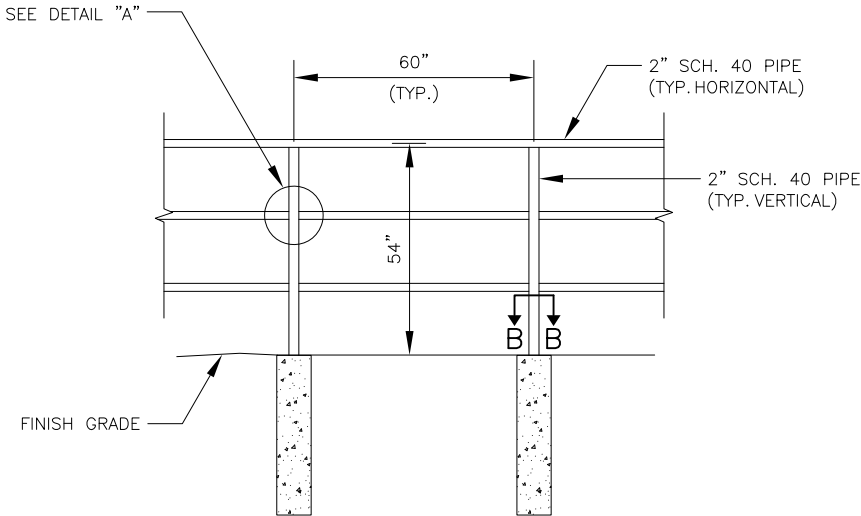
10/28/2020 9:39 AM

DRAWING LOCATION  
L:\HIGHWAY\DESIGN\MASTERS\AUTOCAD\REGIONAL\DETAILS\2016\HIGHWAYS\PIPE HAND RAIL\_C3D16\_IN PROGRESS.DWG

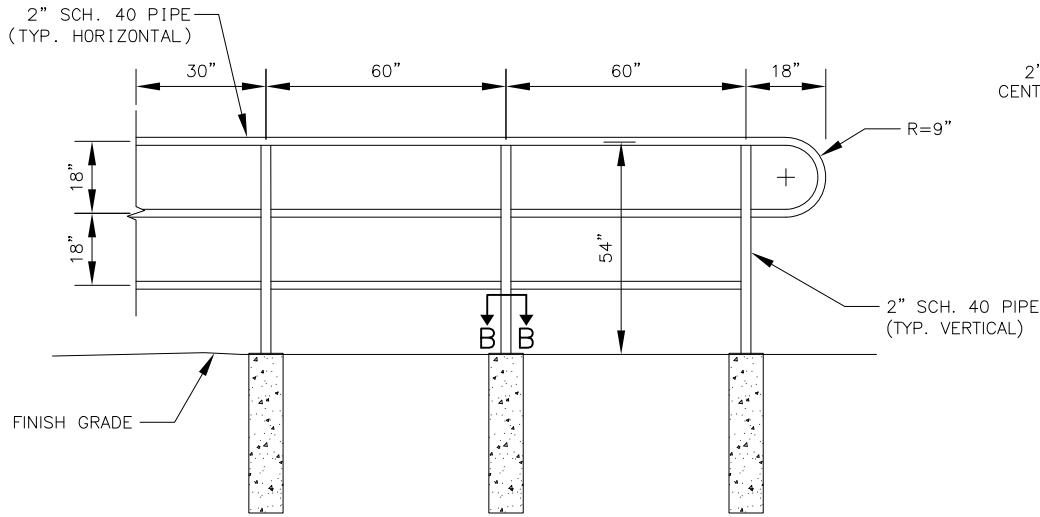
NO.	DATE	REVISION	STATE	PROJECT DESIGNATION	YEAR	SHEET NO.	TOTAL SHEETS
			ALASKA	XXXXXXXX/XXXXXXXXXXXX	20XX	LAYOUT 1	



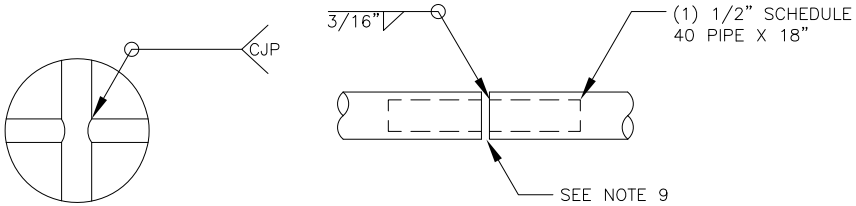
FOUNDATION AND CONNECTION DETAIL  
NTS



TYPICAL SECTION VIEW

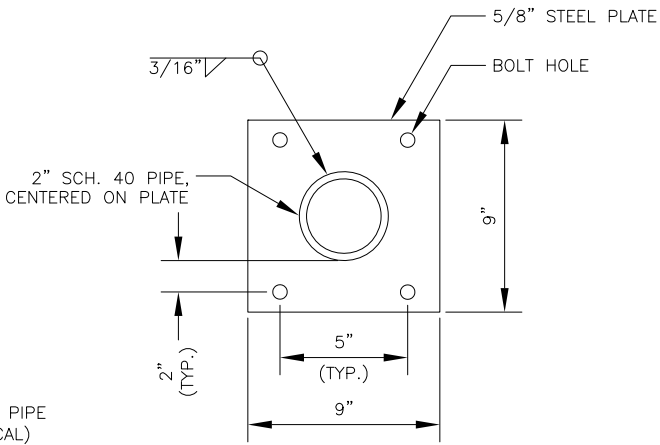


END SECTION VIEW



DETAIL "A"

EXPANSION JOINT DETAIL



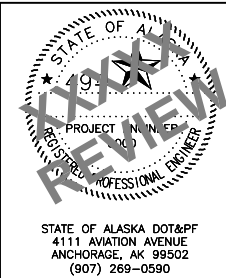
SECTION B-B

PIPE HAND RAIL

PIPE HAND RAIL NOTES:

- DIMENSIONS ON TYPICAL SECTION AND END SECTION ARE SHOWN TO CENTER OF PIPE.
- STEEL PIPE SHALL BE HOT-DIPPED GALVANIZED.
- ALL FIXED JOINTS TO BE WELDED ALL AROUND AND GROUND SMOOTH.
- ALL WELDING SHALL BE IN ACCORDANCE WITH THE AMERICAN WELDING SOCIETY STRUCTURAL WELDING CODE, (STEEL) ANSI/AWS D1.1 (CURRENT EDITION).
- BASE PLATES SHALL BE IN ACCORDANCE WITH ASTM A36.
- PLACE #4 VERTICAL BARS ON THE OUTSIDE EDGE AND ADJACENT TO EACH ANCHOR BOLT.
- MINIMUM ANCHOR BOLT EMBEDMENT IS 5".
- SECTION B-B IS PARALLEL TO PAVEMENT EDGE.
- AN EXPANSION JOINT IS TO BE INCLUDED EVERY 30'.

DATE	###
###	----



STATE OF ALASKA  
DEPARTMENT OF TRANSPORTATION  
AND PUBLIC FACILITIES  
PROJECT TITLE  
PROJECT TITLE  
PIPE HAND RAIL DETAILS

STATE OF ALASKA DOT&PF  
4111 AVIATION AVENUE  
ANCHORAGE, AK 99502  
(907) 269-0590