

DESIGNED BY  
CHECKED BY  
DRAFTED BY

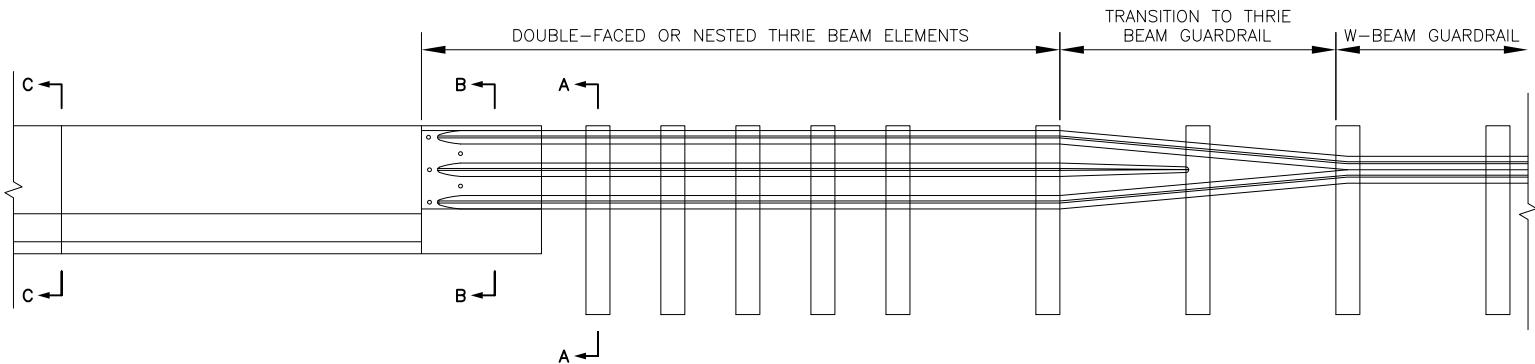
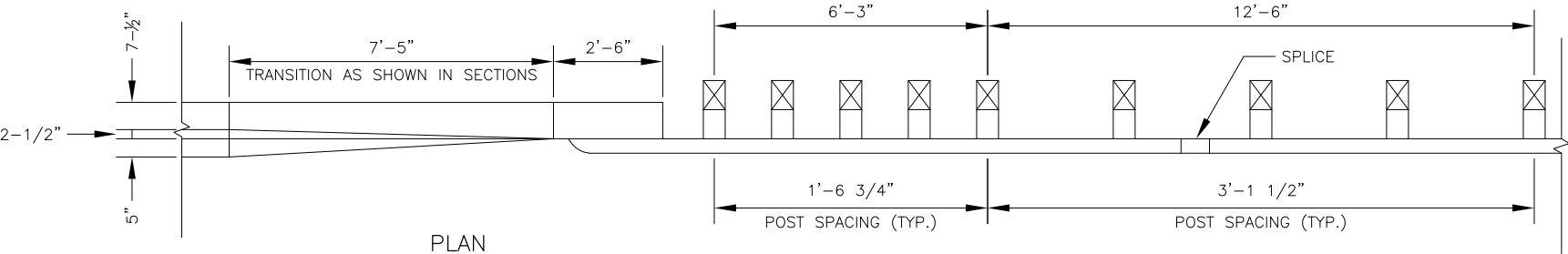
SCALE

DATE  
10/28/2020 9:30 AM

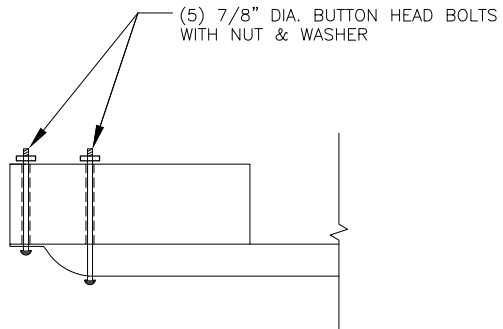
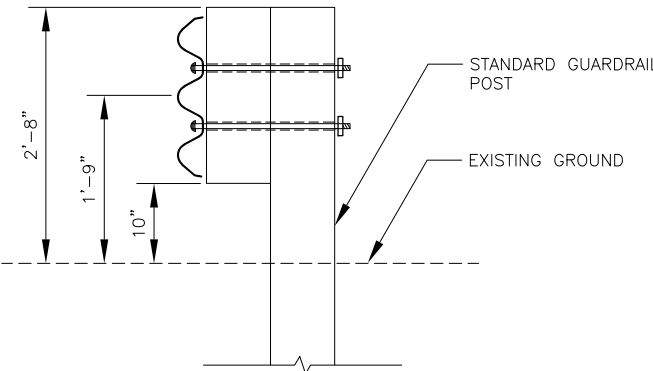
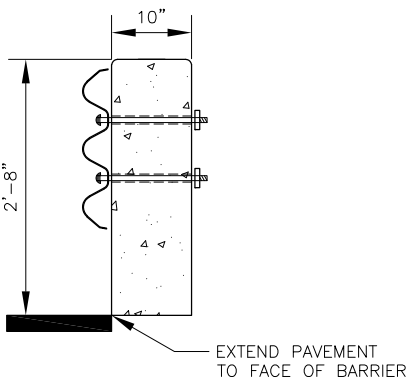
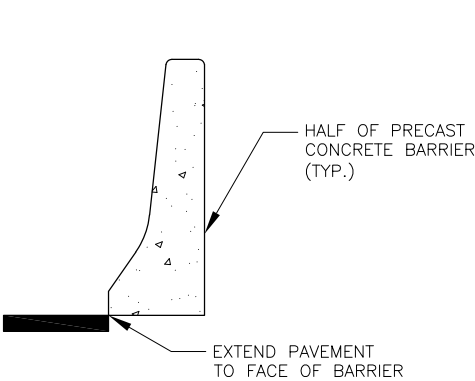
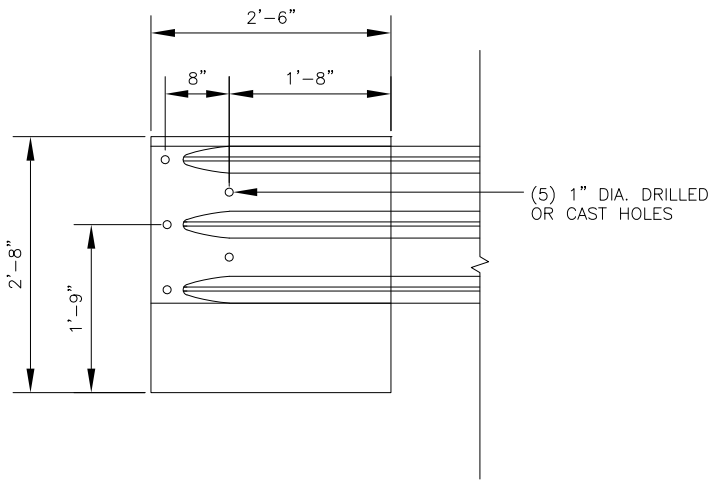
TIME

DRAWING LOCATION  
E:\HIGHWAY\DESIGN\MASTERS\AUTOCAD\REGIONAL\DETAILS\2016\HIGHWAYS\MODIFIED HALF CONCRETE BARRIER=GUARDRAIL CONNECTION  
DETAIL\_C3D16\_IN\_PROGRESS.DWG

NO.	DATE	REVISION	STATE	PROJECT DESIGNATION	YEAR	SHEET NO.	TOTAL SHEETS
			ALASKA	XXXXXXXX/XXXXXXXXXXXX	20XX	LAYOUT	



W-BEAM GUARDRAIL TRANSITION TO THRIE-BEAM CONCRETE BARRIER CONNECTION



THRIE-BARRIER CONNECTION

- NOTES:
- FOUNDATION FOR MODIFIED HALF CONCRETE BARRIER IS NOT SHOWN.
  - REFER TO THRIE BEAM TRANSITION DETAIL (N SHEETS) FOR THRIE BEAM TERMINAL CONNECTION AND TRANSITION GEOMETRY.

DATE  
###

###

STATE OF ALASKA  
DEPARTMENT OF TRANSPORTATION  
AND PUBLIC FACILITIES  
PROJECT TITLE  
PROJECT TITLE  
MODIFIED HALF CONCRETE  
BARRIER/GUARDRAIL  
CONNECTION  
STATE OF ALASKA DOT&PF  
4111 AVIATION AVENUE  
ANCHORAGE, AK 99502  
(907) 269-0590