

DESIGNED BY
CHECKED BY
DRAFTED BY

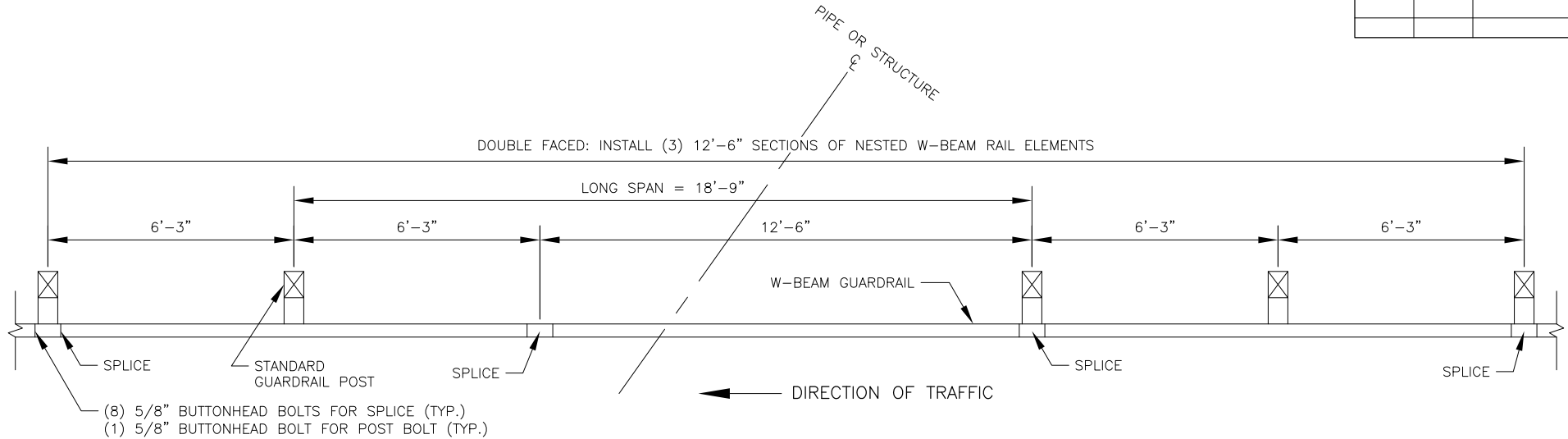
SCALE

DATE
10/28/2020 9:05 AM

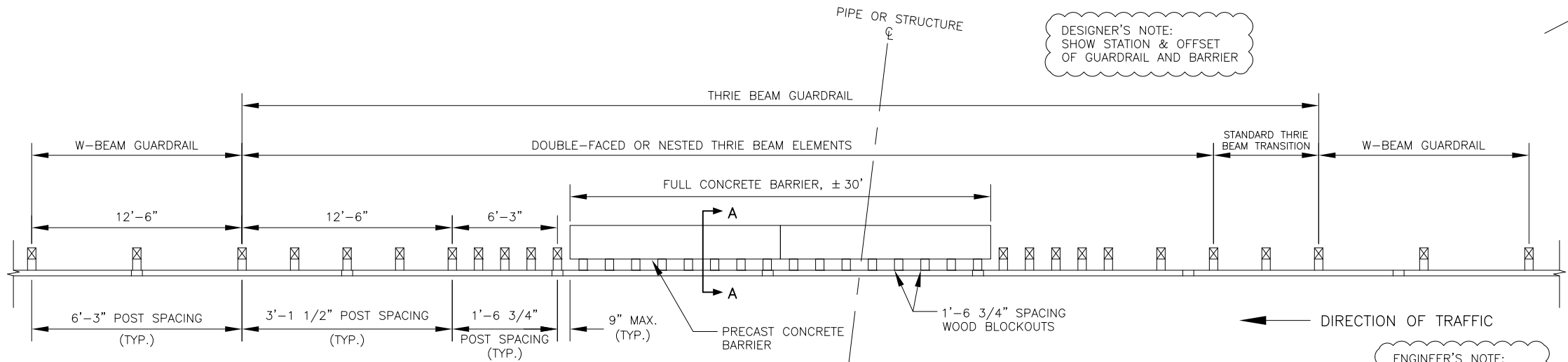
TIME

DRAWING LOCATION
C:\HIGHWAY\DESIGN\MASTERS\AUTOCAD\REGIONAL\DETAILS\2016\HIGHWAYS\GUARDRAIL OVER UNDERGROUND PIPES-STRUCTURES
DETAIL_C3016_IN_PROGRESS.DWG

NO.	DATE	REVISION	STATE	PROJECT DESIGNATION	YEAR	SHEET NO.	TOTAL SHEETS
			ALASKA	XXXXXXXX/XXXXXXXXXXXX	20XX	LAYOUT	

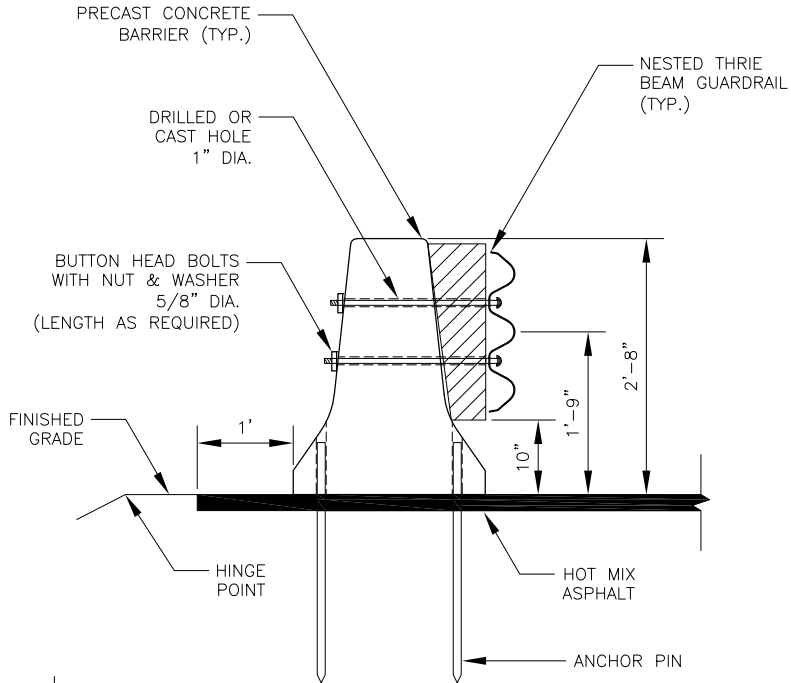


LONG SPAN W-BEAM GUARDRAIL



PLAN

LONG SPAN THRIE BEAM GUARDRAIL AND TRANSITION



SECTION
A-A

DESIGNER'S NOTE:
SHOW STATION & OFFSET
OF GUARDRAIL AND BARRIER

ENGINEER'S NOTE:
CALCULATE AND INSERT
APPROPRIATE STA.

LONG SPAN THRIE BEAM

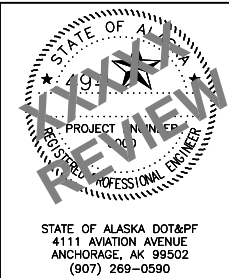
NOTES:

1. EXTEND HOT MIX ASPHALT 1-FOOT BENEATH PRECAST CONCRETE BARRIER, TOWARD HINGE POINT, AS SHOWN IN SECTION A-A.
2. PROVIDE NEW PRECAST CONCRETE BARRIER SECTIONS IN ACCORDANCE WITH STD. DWG G-46.
3. INSTALL BARRIER CONNECTOR PINS AND ANCHOR PINS IN ACCORDANCE WITH STD. DWG G-46. SEE STD. G-09S OR G-09W FOR THRIE BEAM ATTACHMENT HARDWARE. SEE STD. DWG G-31 FOR ADDITIONAL THRIE BEAM LAYOUT DETAILS.
4. LAP GUARDRAIL SPLICES IN THE DIRECTION OF ADJACENT TRAFFIC.

LONG SPAN W-BEAM NOTES:

1. CENTER LONG SPAN OF 2-BEAM GUARDRAIL OVER STA. ____+____. DO NOT INSTALL POSTS WITHIN LONG SPAN.
2. REFERENCE STD. DWG G-00 FOR MAKING SPLICE CONNECTIONS AND STD. DWG G-28 AND G-04W FOR OTHER STANDARD INSTALLATION DETAILS.
3. NESTED SECTIONS CONSIST OF TWO SECTIONS OF W-BEAM GUARDRAIL ELEMENTS, ONE SET INSIDE THE OTHER.

DATE	###
###	----



STATE OF ALASKA
DEPARTMENT OF TRANSPORTATION
AND PUBLIC FACILITIES

PROJECT TITLE
PROJECT TITLE
GUARDRAIL OVER
UNDERGROUND PIPES &
STRUCTURES

STATE OF ALASKA DOT&PF
4111 AVIATION AVENUE
ANCHORAGE, AK 99502
(907) 269-0590