

DESIGNED BY
CHECKED BY
DRAFTED BY

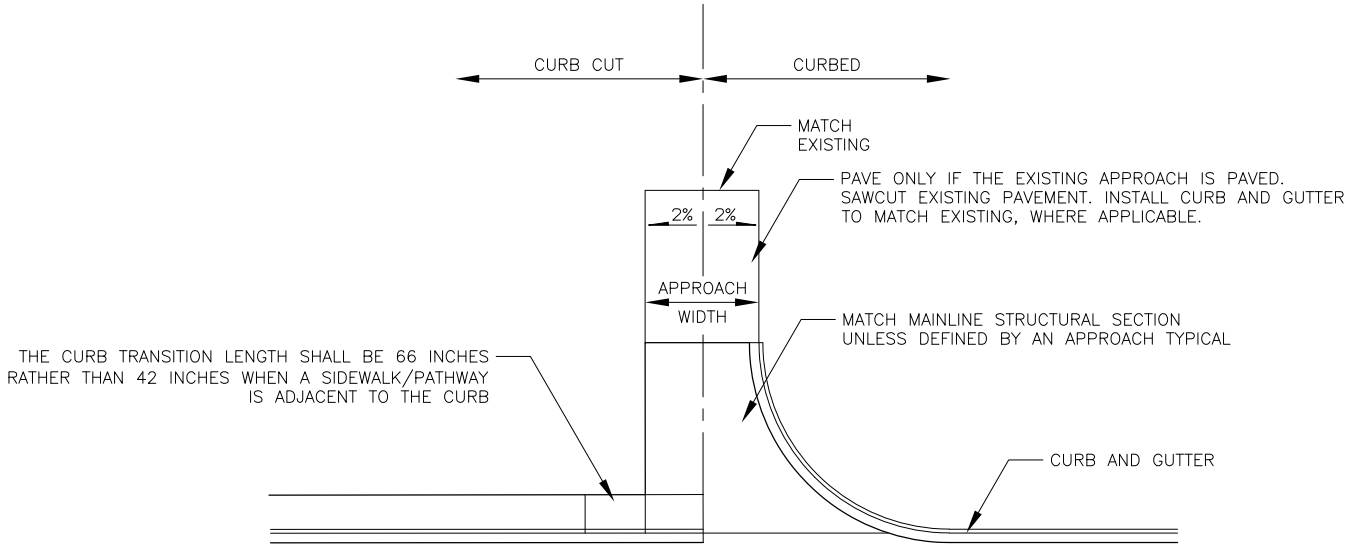
SCALE

TIME
10/28/2020 8:42 AM

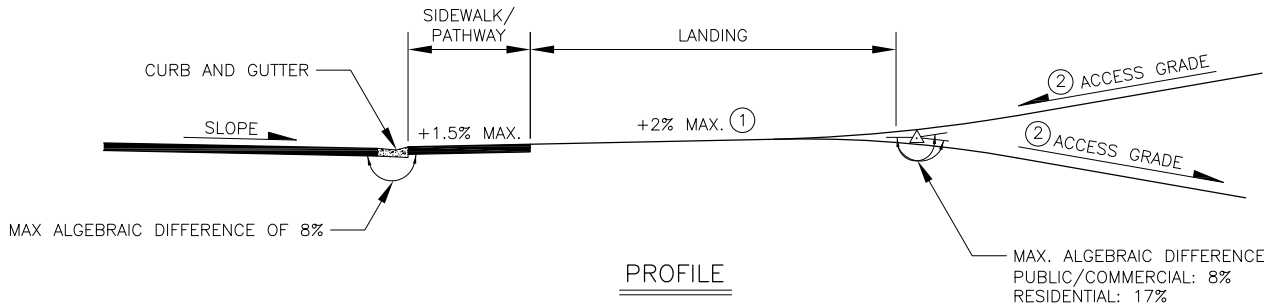
DATE

DRAWING LOCATION
T:\HIGHWAY\DESIGN\MASTERS\AUTOCAD\REGIONAL\DETAILS\2016\HIGHWAYS\CURBED APPROACH, CURB CUT WIDENING, MAIL BOX
TURNOUT_C3D16_IN_PROGRESS.DWG

NO.	DATE	REVISION	STATE	PROJECT DESIGNATION	YEAR	SHEET NO.	TOTAL SHEETS
			ALASKA	XXXXXXXX/XXXXXXXXXXXX	20XX	LAYOUT	



PLAN



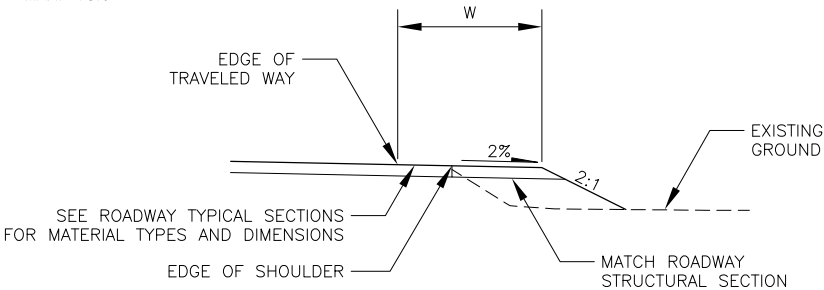
PROFILE

CURBED APPROACH

CURBED APPROACH NOTES:

- SEE APPROACH SUMMARY FOR APPROACH STATION, LENGTH, WIDTH, SKEW ANGLE, AND TYPE.
- APPROACH VERTICAL CURVE REQUIREMENTS:
CREST - 2 1/2 INCH MAXIMUM IN A 10 FOOT CHORD
SAG - 2 INCH MAXIMUM IN A 10 FOOT CHORD

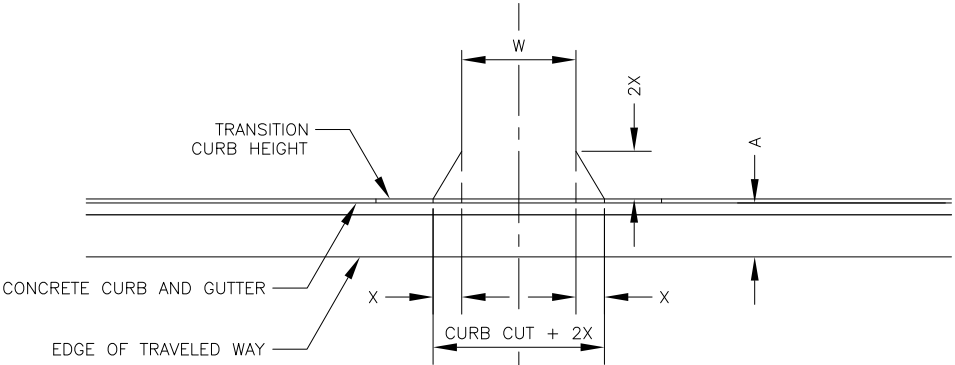
- ① WHEN PATHWAY IS PRESENT, MAXIMUM LANDING GRADE IS TO BE +1.5%.
- ② ACCESS GRADE MAX. 15%



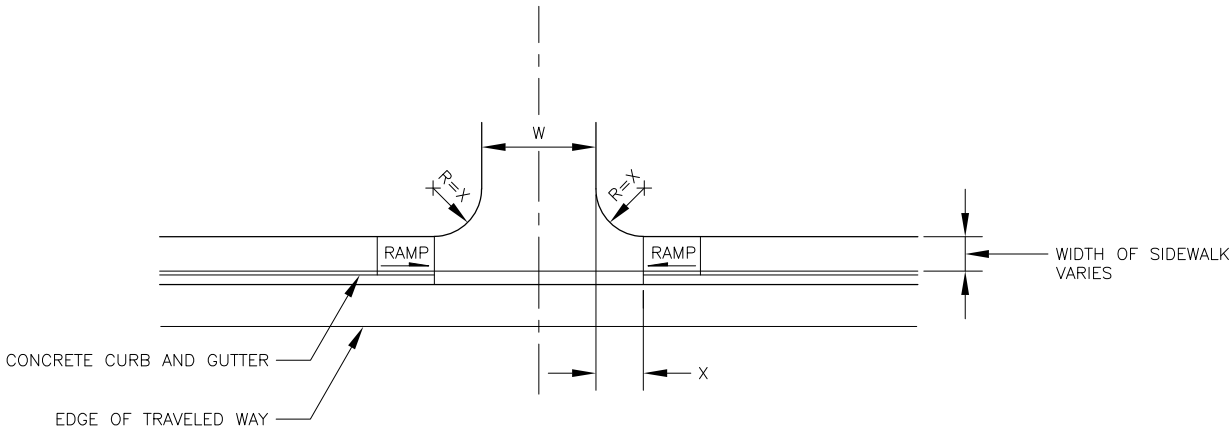
MAIL BOX TURNOUT FOR GROUPED BOXES

MAIL BOX NOTES:

- MAIL BOX OFFSET (W) TO BE ___ INCHES.
- SEE STD. DWG M-20 FOR TURNOUT WIDTH AND TAPERS.



WITHOUT SIDEWALK



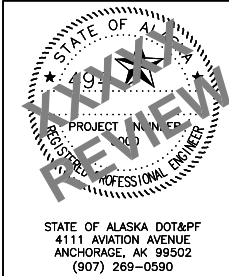
WITH SIDEWALK

CURB CUT WIDENING

ASPHALT PATHWAY NOTES:

- W = WIDTH OF APPROACH, A = WIDTH OF SHOULDER
- X = 3' WHEN A > 4' AND X = 5' WHEN A ≤ 4'

DATE	###
###	----



STATE OF ALASKA
DEPARTMENT OF TRANSPORTATION
AND PUBLIC FACILITIES

PROJECT TITLE
PROJECT TITLE
CURBED APPROACH,
CURB CUT WIDENING, AND
MAIL BOX TURNOUT