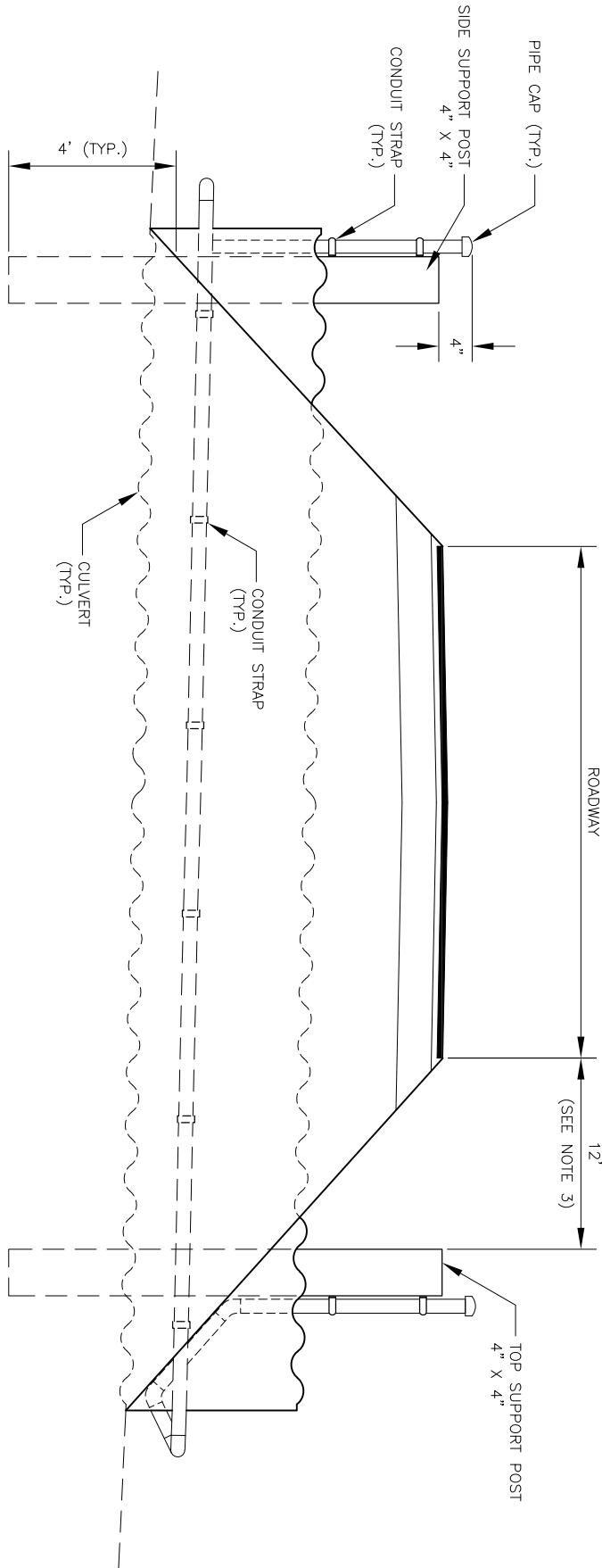


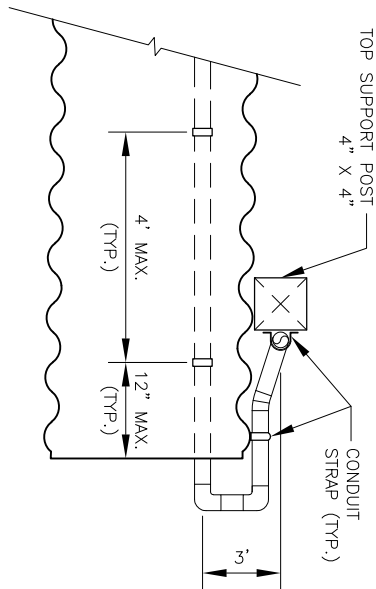
NO.	DATE	REVISION	STATE	PROJECT DESIGNATION	YEAR	SHEET NO.	TOTAL SHEETS
			ALASKA	XXXXXXXX/XXXXXXXXXX	20XX	LAYOUT	



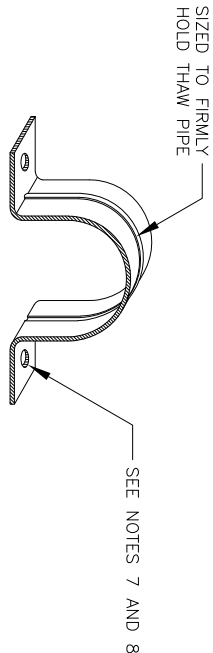
ELEVATION VIEW



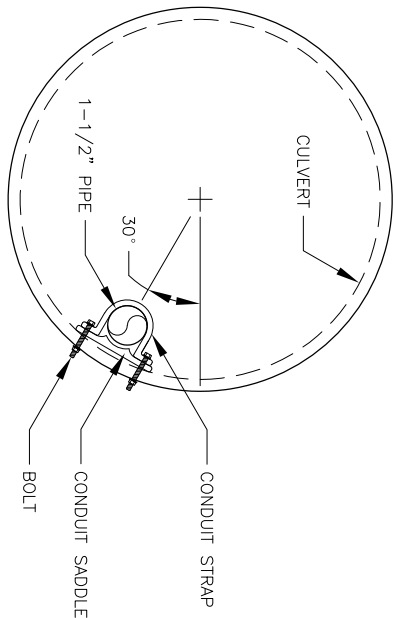
LOW FILL CONDITION PLAN VIEW



DEEP FILL CONDITION PLAN VIEW



GALVANIZED RIGID CONDUIT STRAP



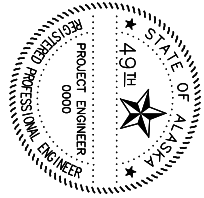
CULVERT CROSS SECTION

THAW PIPE NOTES:

1. THESE THAW PIPES ARE INTENDED FOR USE IN STEAM THAWING.
2. USE 1 - 1/2" I.D. ASTM A53 GALVANIZED PIPE AND ASTM A234 GALVANIZED FITTINGS.
3. WHEN THE HEIGHT OF FILL EXCEEDS 5', LOCATE THE SUPPORT POST ON THE SIDE SLOPE 12' FROM THE SHOULDER.
4. FASTEN THE THAW PIPE TO THE SIDE OF THE CULVERT WITH GALVANIZED RIGID CONDUIT STRAPS ON 4' CENTERS MAX. THE MAXIMUM DISTANCE FROM END OF CULVERT TO FIRST CONDUIT STRAPS IS 12 INCHES.
5. USE PRESSURE TREATED SUPPORT POSTS OF HEM-FIR, NO. 2 OR BETTER, USE AMMONIACAL COPPER ZINC ARSENATE (ACZA) OR CHROMATED COPPER ARSENATE (CCA) PRESERVATIVES, ON SUPPORT POSTS. PRESSURE TREAT IN ACCORDANCE WITH AASHTO M133.
6. ALIGN TOP OF TOP SUPPORT POST WITH EDGE OF SHOULDER OR TO A MAXIMUM HEIGHT OF 5', WHICHEVER IS LESS.
7. FOR CONDUIT STRAP ATTACHMENT TO POSTS, USE 2" MIN. LENGTH GALVANIZED LAG SCREWS WITH LOCK WASHERS, DIAMETER TO MATCH HOLES IN STRAP.
8. FOR CONDUIT STRAP ATTACHMENT TO SIDE OF CULVERT, USE 2" GALVANIZED BOLTS, LOCK WASHERS, AND NUTS.

ENGINEER NOTE:
BEFORE INCLUDING THIS DRAWING INTO YOUR PLAN SET, CONTACT THE M&O STATION THAT WILL BE MAINTAINING THE FACILITY FOR AREA SPECIFIC REQUIREMENTS.

DATE	###
###	---



STATE OF ALASKA
DEPARTMENT OF TRANSPORTATION
AND PUBLIC FACILITIES
PROJECT TITLE
PROJECT TITLE
CULVERT THAW PIPE
DETAILS