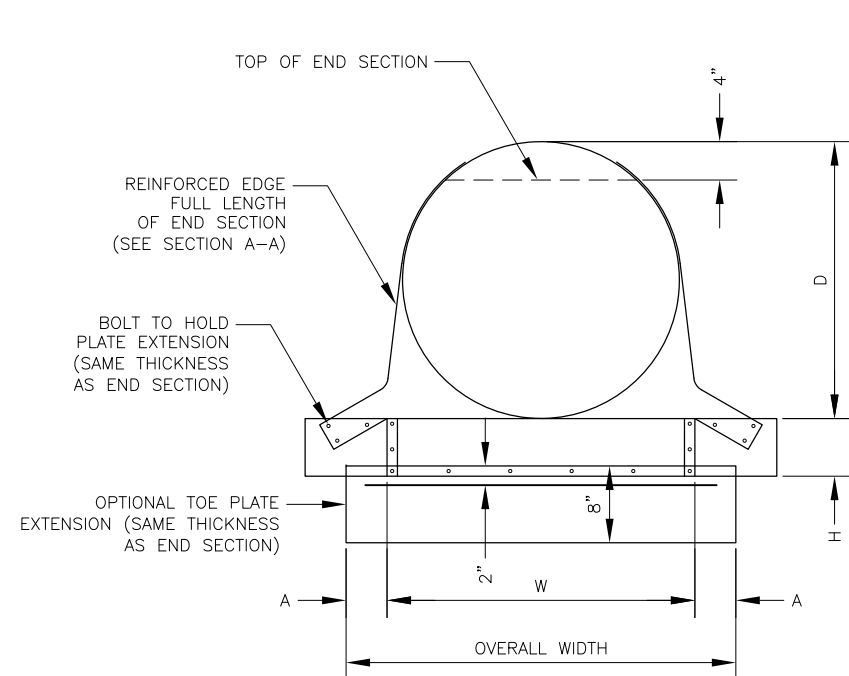
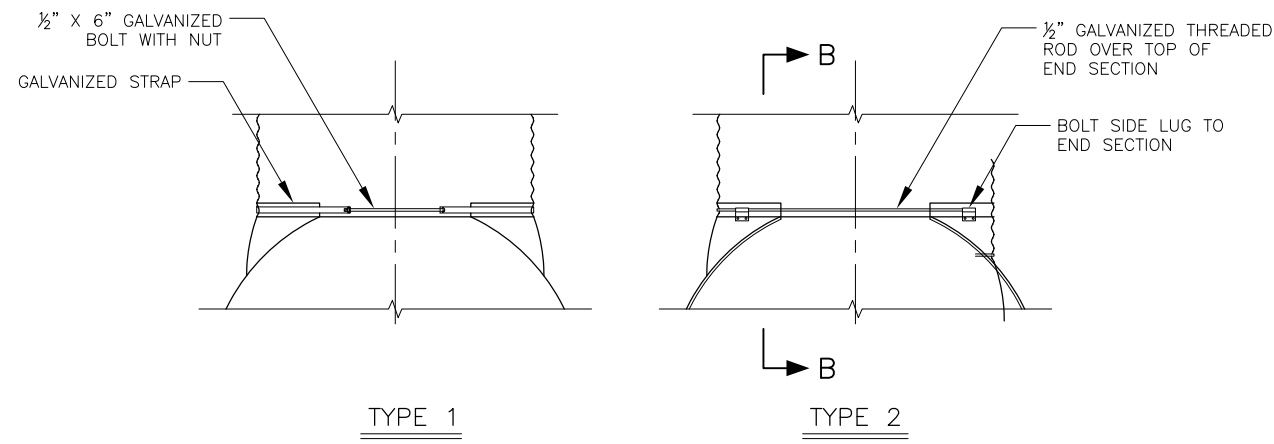


NO.	DATE	REVISION	STATE	PROJECT DESIGNATION	YEAR	SHEET NO.	TOTAL SHEETS
			ALASKA	XXXXXXXX/XXXXXXXXXX	20XX	LAYOUT	



FRONT VIEW

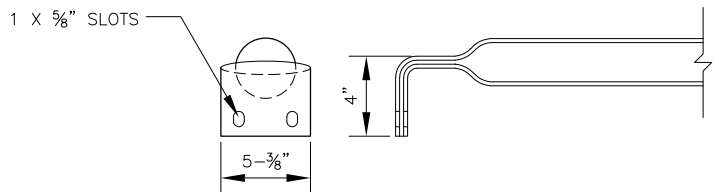
ROUND CULVERT PIPE



END SECTION CONNECTION

CONNECTION NOTES:

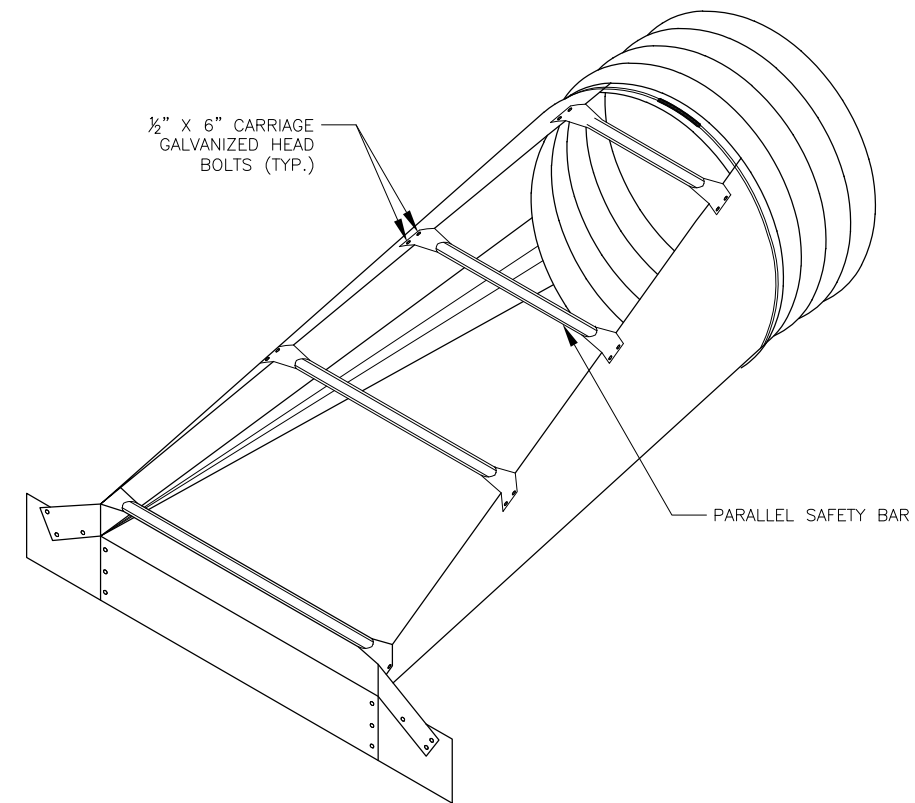
1. TYPE 1 CONNECTOR IS FOR ROUND METAL PIPES WITH DIAMETER BETWEEN 15 AND 24 INCHES.



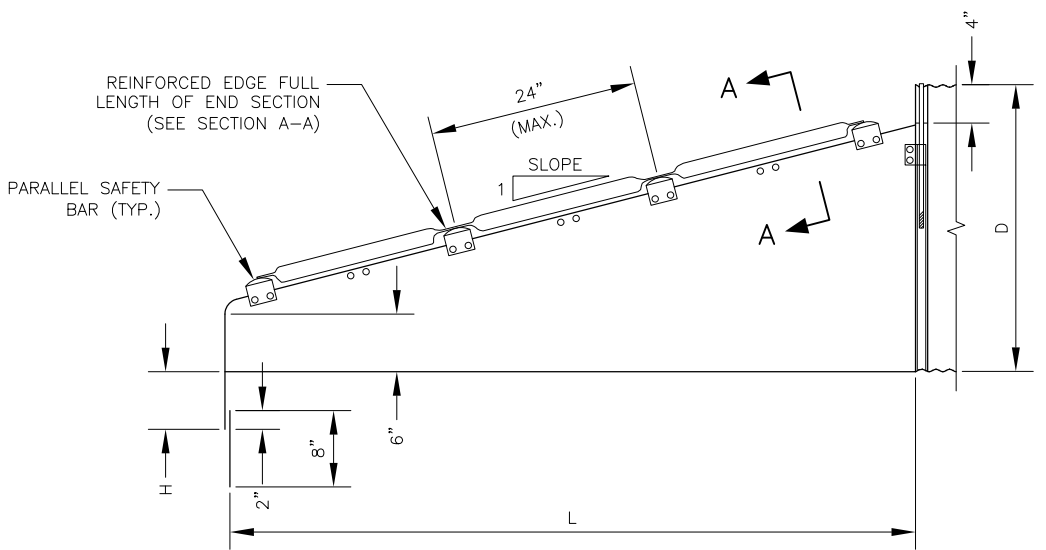
SAFETY BAR DETAILS

SAFETY BAR NOTES:

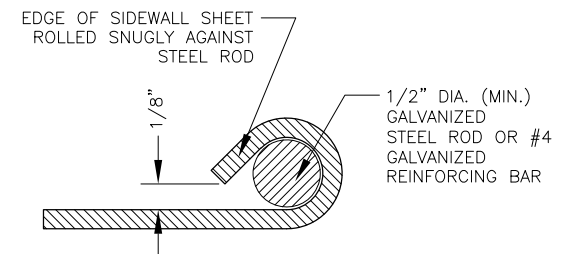
1. SAFETY BAR IS A 3 INCH GALVANIZED STEEL PIPE. TO INSTALL, FLATTEN ENDS AND BEND OUTSIDE 4 INCHES OF EACH END TO MATCH END SECTION SIDES.



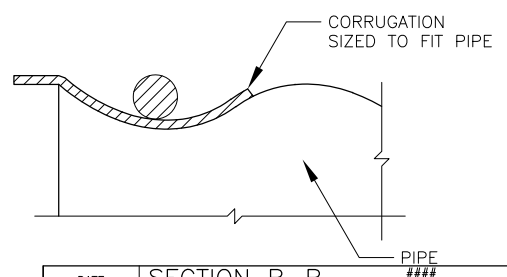
ORTHO VIEW



ELEVATION VIEW

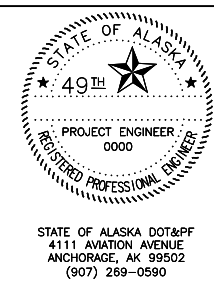


SECTION A-A



SECTION B-B

DATE	SECTION B-B	PIPE ###
###		---



STATE OF ALASKA
DEPARTMENT OF TRANSPORTATION
AND PUBLIC FACILITIES

PROJECT TITLE
PROJECT TITLE

CULVERT END SECTION WITH
SAFETY BARS DETAIL