

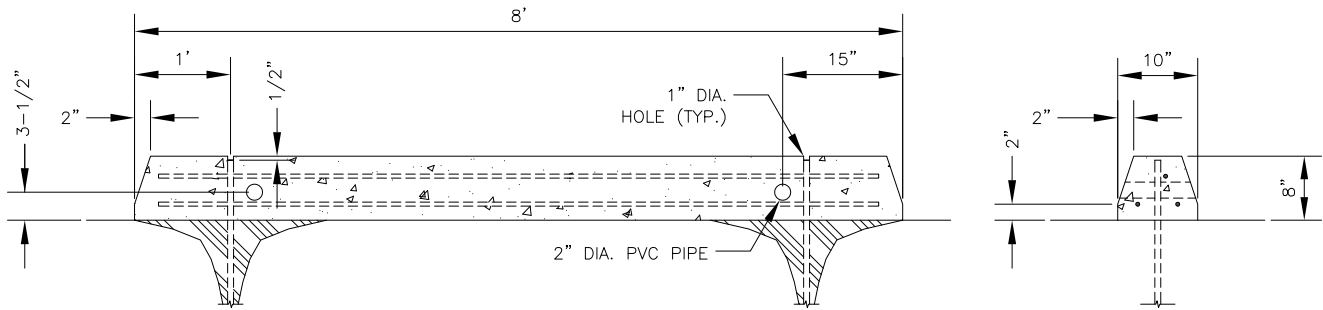
DESIGNED BY  
CHECKED BY  
DRAFTED BY

SCALE

DATE  
TIME  
8/19/2020 3:23 PM

DRAWING LOCATION  
L:\HIGHWAY\DESIGNMASTERS\AUTOCAD\REGIONALDETAILS\2016\HIGHWAYS\CONCRETE BUMPER CURB DETAIL\_C3D16\_IN\_PROGRESS.DWG

NO.	DATE	REVISION	STATE	PROJECT DESIGNATION	YEAR	SHEET NO.	TOTAL SHEETS
			ALASKA	XXXXXXXX/XXXXXXXXXXXX	20XX	LAYOUT	



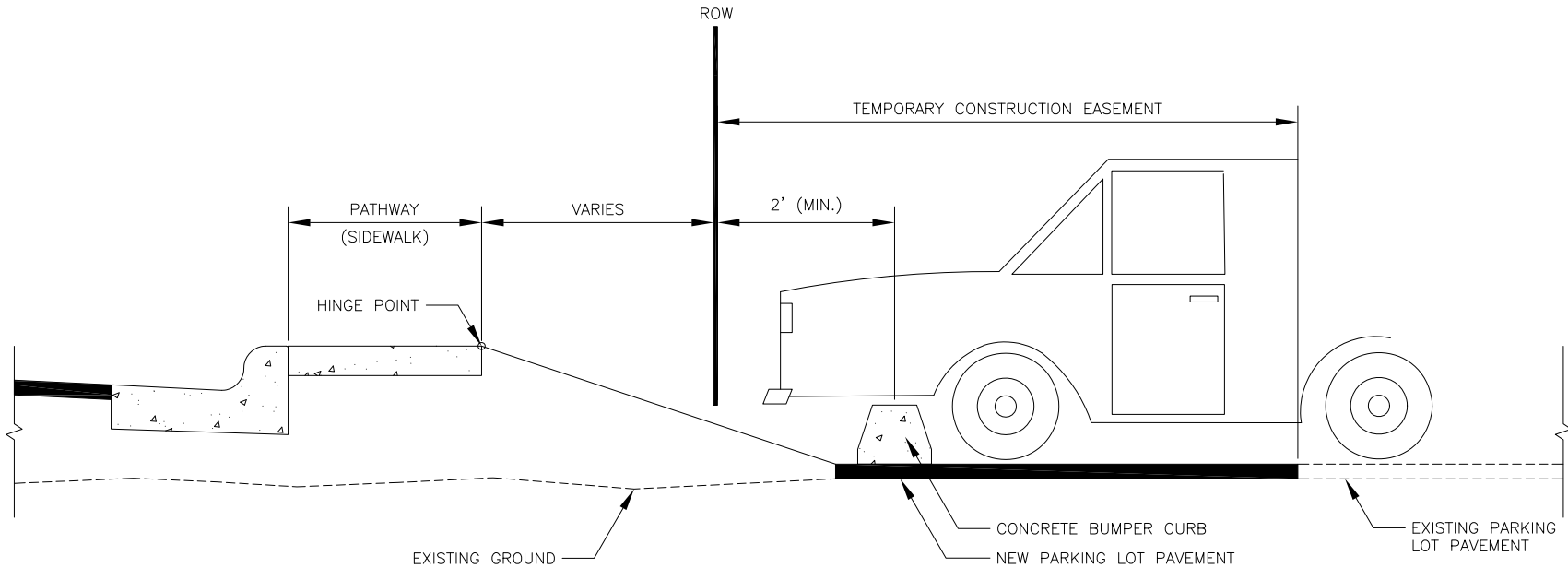
SIDE VIEW

END VIEW

CONCRETE BUMPER CURB

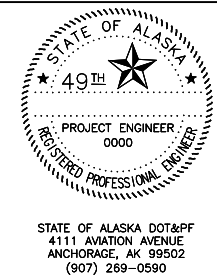
BUMPER CURB NOTES:

- BUMPER CURB SHALL BE PLACED SO AS TO PREVENT PARKED VEHICLES FROM EXTENDING INTO RIGHT-OF-WAY AS PER PLANS OR AS DIRECTED BY THE ENGINEER.
- BUMPER CURBS SHALL BE PRECAST TYPE A CONCRETE.
- EPOXY CEMENT SHALL NOT BE SUBSTITUTED FOR NO. 6 VERTICAL REBAR PIN.
- LEAVE 2-FOOT GAPS BETWEEN CURB SECTIONS, OR AS OTHERWISE DIRECTED BY THE ENGINEER.
- HOLES FOR REBAR DOWELS SHALL BE 1-INCH DIAMETER. GROUT, CEMENT, OR EPOXY HOLE SHUT AFTER BAR IS IN PLACE.



REESTABLISH PARKING LOT AND CONCRETE BUMPER CURB PLACEMENT

DATE	###
###	----



STATE OF ALASKA  
DEPARTMENT OF TRANSPORTATION  
AND PUBLIC FACILITIES  
PROJECT TITLE  
PROJECT TITLE  
CONCRETE BUMPER CURB  
DETAIL