

DESIGNED BY  
CHECKED BY  
DRAFTED BY

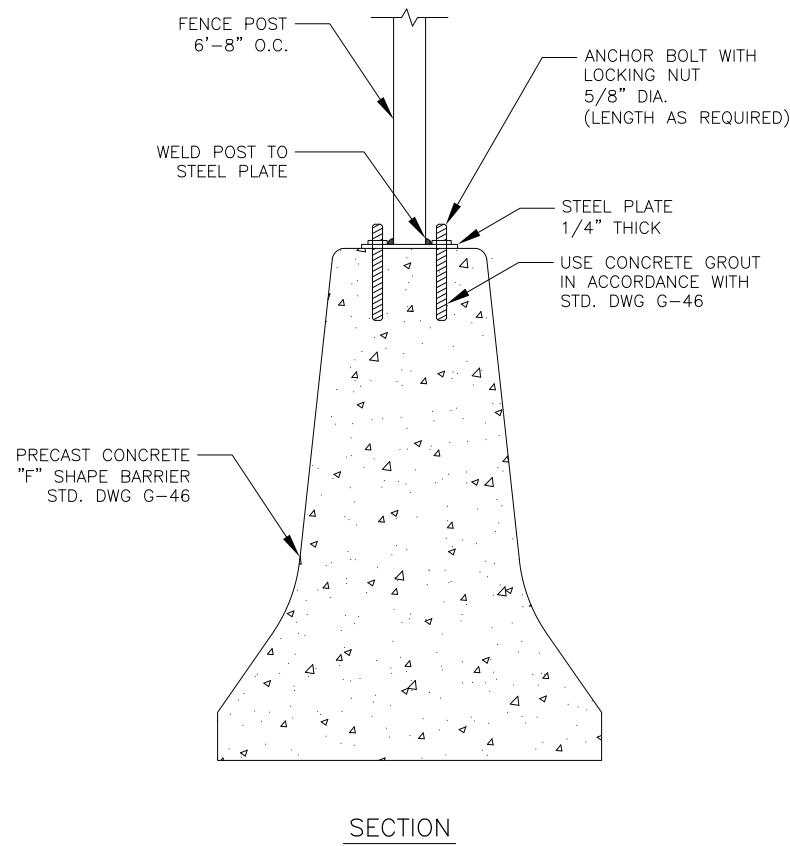
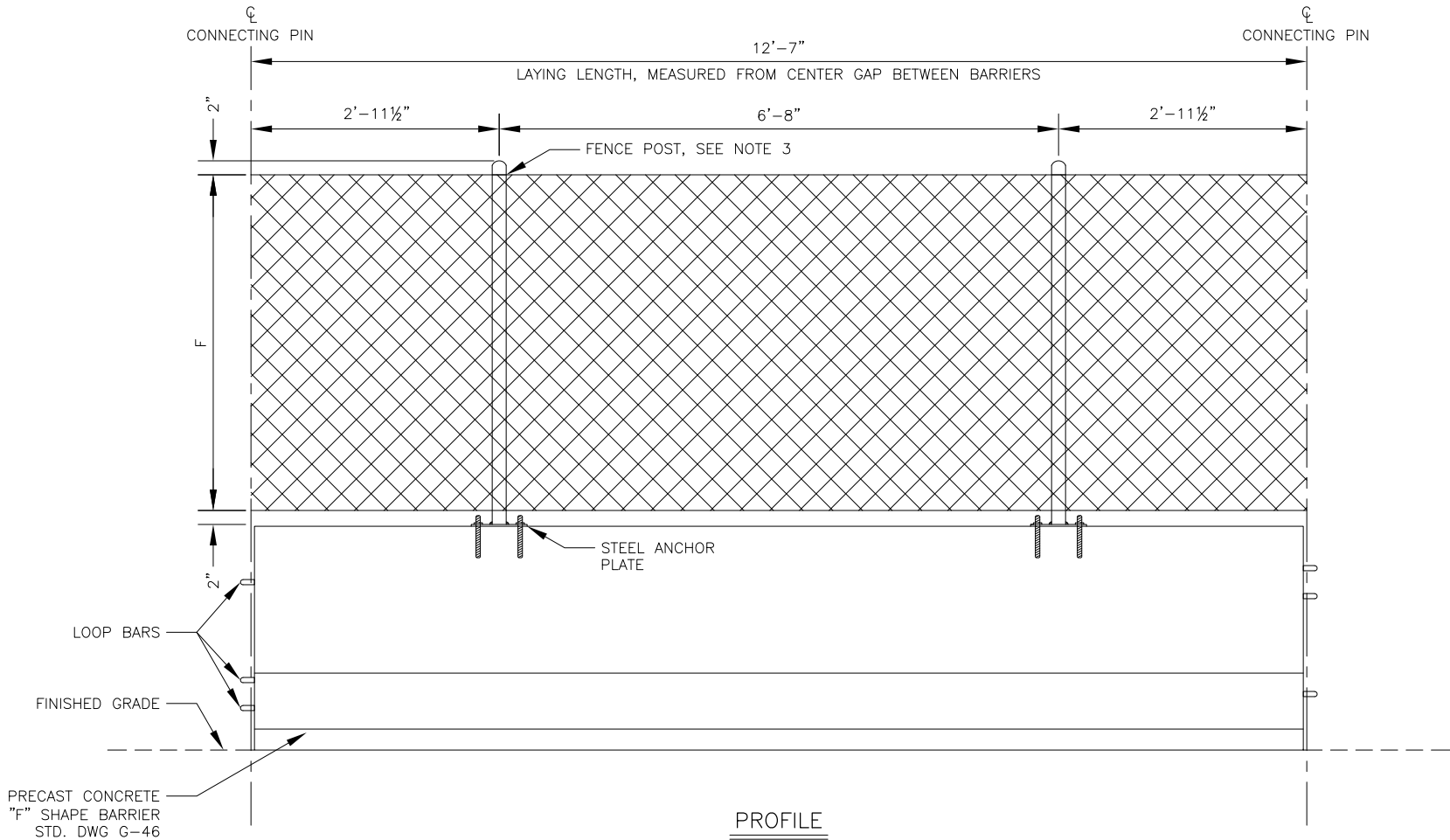
SCALE

TIME  
12:52 PM

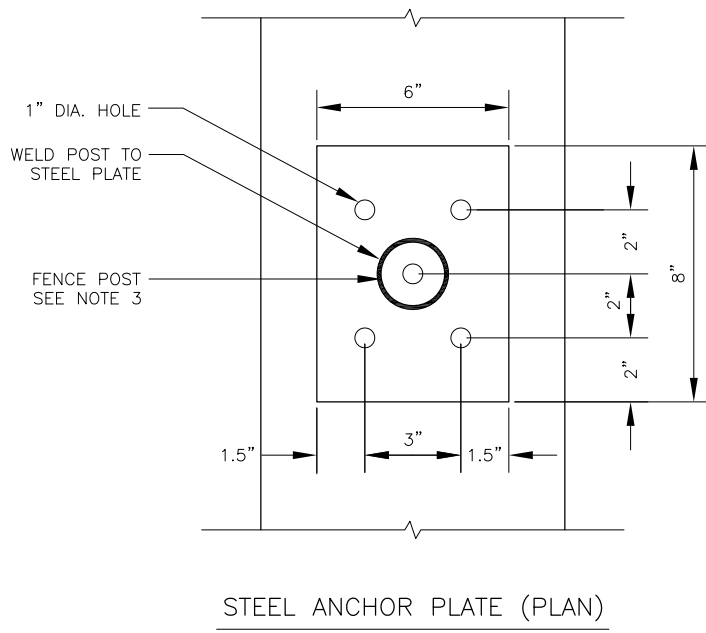
DATE  
8/19/2020

DRAWING LOCATION  
L:\HIGHWAY\DESIGN\MASTERS\AUTOCAD\REGIONAL\DETAILS\2016\HIGHWAYS\CONCRETE BARRIER WITH FENCE DETAIL\C3D16.IN  
PROGRESS.DWG

NO.	DATE	REVISION	STATE	PROJECT DESIGNATION	YEAR	SHEET NO.	TOTAL SHEETS
			ALASKA	XXXXXXX/XXXXXXXXXX	20XX	VERTICAL BOLT ATTACHMENT	

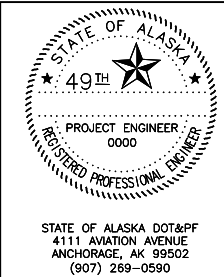


- DESIGNER'S NOTE:
1. FILL IN HEIGHT OF FENCE. TYPICAL HEIGHTS OF 4' & 6' HAVE BEEN USED ON PAST PROJECTS.
  2. FILL IN DIA. OF FENCE POST. PER STD. DWG F-01, 4' HEIGHT REQUIRES 2" DIA. POST AND 6' HEIGHT REQUIRES 2-1/2" DIA. POST
- ENGINEER'S NOTE:
1. LAYOUT "HORIZONTAL BOLT ATTACHMENT" APPLICABLE IN AREAS THAT WILL NOT BE SNOW PLOWED.
  2. LAYOUT "VERTICAL BOLT ATTACHMENT" APPLICABLE IN AREAS THAT WILL BE SNOW PLOWED.



- NOTES:
1. SEE STD. DWG F-01 FOR CHAIN LINK FENCE DETAILS.
  2. SEE STD. DWG G-46 FOR PRECAST CONCRETE BARRIER DETAILS.
  3. FENCE POST DIA. TO BE \_\_ INCHES.
  4. FENCE HEIGHT (F) TO BE \_\_ FEET.
  5. TOP RAIL IS PROHIBITED.
  6. HOT-DIP GALVANIZE ALL PARTS AFTER FABRICATION.

DATE	###
###	----



STATE OF ALASKA  
DEPARTMENT OF TRANSPORTATION  
AND PUBLIC FACILITIES

PROJECT TITLE  
PROJECT TITLE  
CONCRETE BARRIER WITH  
CHAIN LINK FENCE