

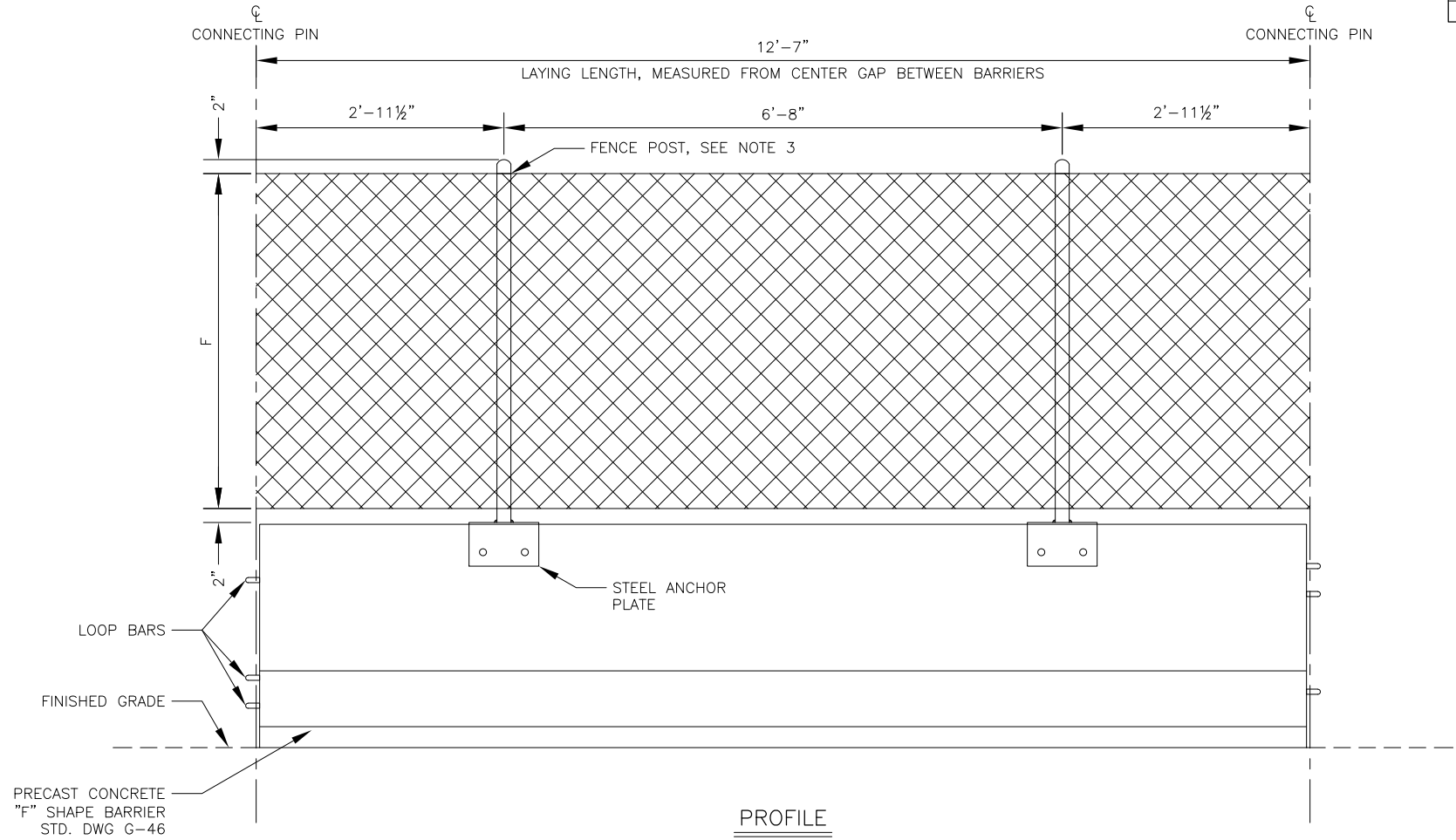
DESIGNED BY
CHECKED BY
DRAFTED BY

SCALE

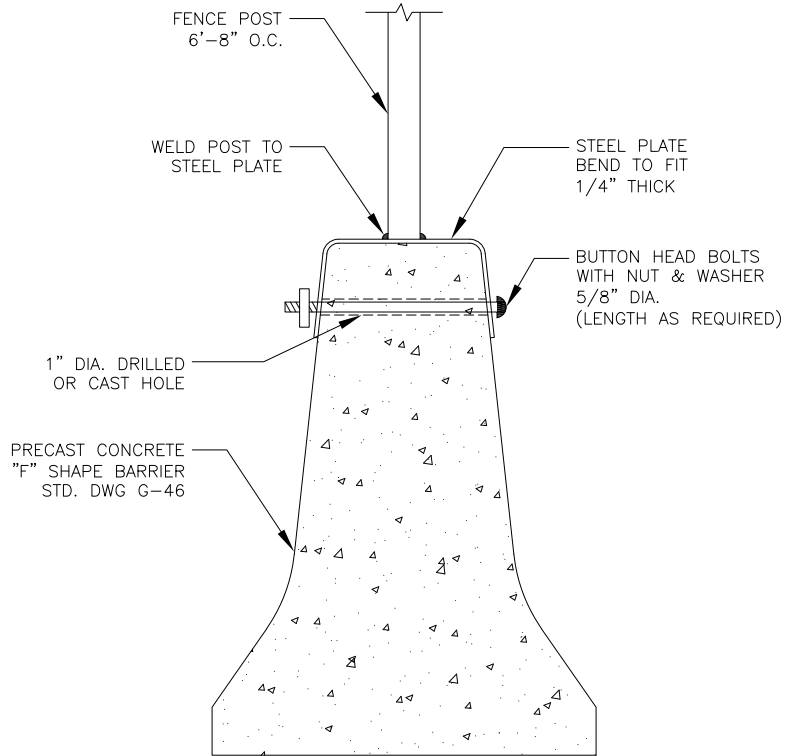
DATE
8/19/2020 12:51 PM

DRAWING LOCATION
L:\HIGHWAYDESIGN\MASTERS\AUTOCAD\REGIONALDETAILS\2016\HIGHWAYS\CONCRETE BARRIER WITH FENCE DETAIL\C3DT6.IN
PROGRESS.DWG

NO.	DATE	REVISION	STATE	PROJECT DESIGNATION	YEAR	SHEET	TOTAL SHEETS
			ALASKA	XXXXXXX/XXXXXXXXXX	20XX	BOLT ATTACHMENT	

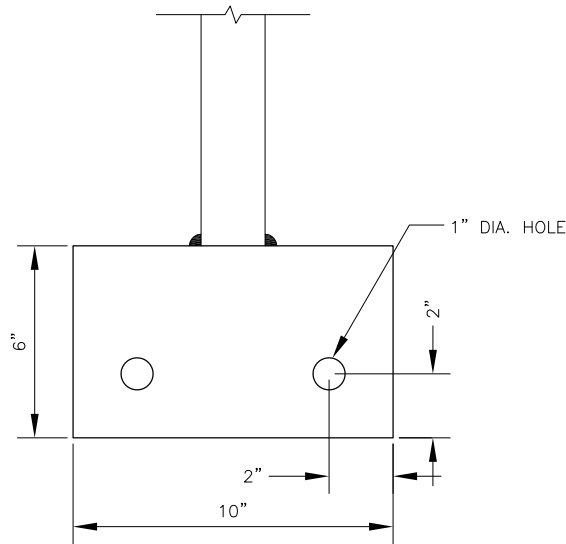


PROFILE

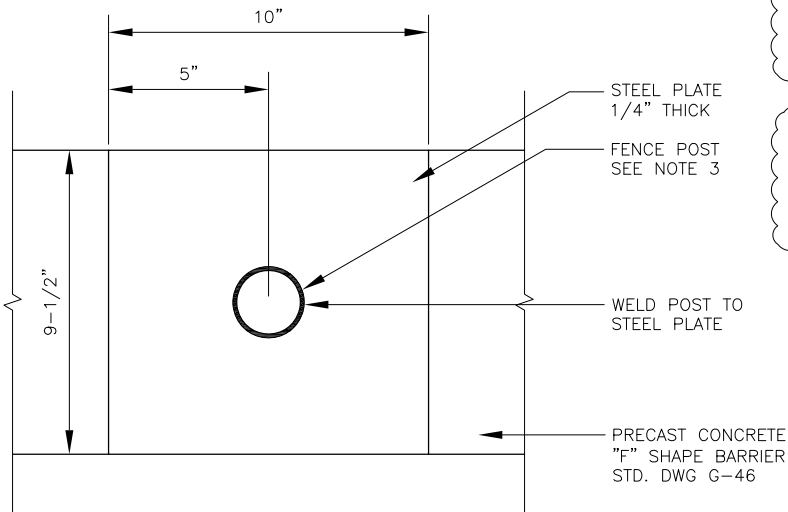


SECTION

CONCRETE BARRIER WITH CHAIN LINK FENCE



PROFILE



PLAN

STEEL ANCHOR PLATE

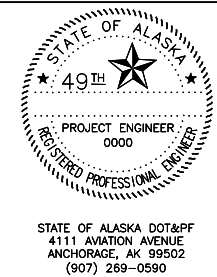
DESIGNER'S NOTE:
1. FILL IN HEIGHT OF FENCE. TYPICAL HEIGHTS OF 4' & 6' HAVE BEEN USED ON PAST PROJECTS.
2. FILL IN DIA. OF FENCE POST. PER STD. DWG F-01, 4' HEIGHT REQUIRES 2" DIA. POST AND 6' HEIGHT REQUIRES 2-1/2" DIA. POST

ENGINEER'S NOTE:
1. LAYOUT "HORIZONTAL BOLT ATTACHMENT" APPLICABLE IN AREAS THAT WILL NOT BE SNOW PLOWED.
2. LAYOUT "VERTICAL BOLT ATTACHMENT" APPLICABLE IN AREAS THAT WILL BE SNOW PLOWED.

NOTES:

- SEE STD. DWG F-01 FOR CHAIN LINK FENCE DETAILS.
- SEE STD. DWG G-46 FOR PRECAST CONCRETE BARRIER DETAILS.
- FENCE POST DIA. TO BE ___ INCHES.
- FENCE HEIGHT (F) TO BE ___ FEET.
- TOP RAIL IS PROHIBITED.
- HOT-DIP GALVANIZE ALL PARTS AFTER FABRICATION.

DATE	###
###	----



STATE OF ALASKA
DEPARTMENT OF TRANSPORTATION
AND PUBLIC FACILITIES
PROJECT TITLE
PROJECT TITLE
CONCRETE BARRIER WITH
CHAIN LINK FENCE