

The Genuine. The Original.



FireKing®

Fire Door Collection

Fire protection, innovative design, optimized performance

Overhead Door Company of The Meadowlands & NYC - A Division of Loading Dock, Inc.
www.overhead-doors.com • info@dockndoor.com • 973-471-4060 • Main Office: 20 Meta Lane, Lodi NJ 07644

FireKing®

Fire Door Collection

Fire protection, innovative design, optimized performance

Fire protection. Innovative design. Smooth performance.

The FireKing® Fire Door Collection by Overhead Door offers fire protection innovative design and optimized performance for the end user. Additional benefits including energy efficiency, climate control and sound control are available with our FireKing® Insulated Fire Door (635 Series).

FireKing® Fire Doors come equipped with an innovative floor reset system which allows these doors to be easily drop tested and mechanically reset at any time without requiring special tools.

The Genuine. The Original.



Robust fire door product line
designed to meet your project
needs for fire and smoke protection.





Advantages

The FireKing® product line covers small, standard, and large door sizes for both insulated and non-insulated fire doors.

- Fire Doors are in compliance with:
 - National Fire Protection Association (NFPA-80)
 - Underwriters Laboratories (UL & ULC)
 - New York City and state of California (CSFM)
 - Factory Mutual (FM) – optional
 - UL listed smoke seal package ("S" label) – optional
- Features up to a four-hour rating on masonry, concrete and steel walls, and a three-hour rating on non-masonry walls to satisfy a variety of applications
- FireKing® Insulated Fire Door (635 Series) serves as a thermal barrier, ideal for applications which require separation due to climate control requirements
 - Energy efficiency, R-value of 4.5
 - Sound Transmission Class (STC) of 21, ideal for applications requiring sound control
 - Mineral wool slat insert offers Smoke and Flame Index of 5
- Wind load options available for Florida Building Code (FBC), Miami-Dade, Texas Department of Insurance (TDI)

Design and Performance

- Standardized component design with chain hoist
- Mechanical floor resettable hoist (non-motorized) enables easy drop test and reset of fire door in seconds without reapplying tension
- Viscous governor technology reduces noise and vibration providing smooth, quiet door operation
- Flexibility in mounting and operation type
- Can also be utilized for everyday operation, similar to a rolling steel door, eliminating the need for an additional door
- Additional fire and smoke protection options to give customer more extensive protection

Optimized Motor Operation

The RHX® FK motor operator is designed to work with the FireKing® fire door systems and offers advanced system features including:

- Availability in variety of horsepower ratings and voltage phases
- Mechanical floor resettable motor operation enables easy drop test and reset of fire door in seconds without reapplying tension
- Field retrofitable with FireKing® floor resettable chain hoist
- Meets National Fire Protection Agency (NFPA) 80 Standard, Underwriters Laboratories (cULus), Factory Mutual (FM), New York City, and the state of California (CSFM) code requirements
- 3 year or 20,000 cycle warranty on the RHX® FK system



Fire Door Collection

Fire protection, innovative design, optimized performance

Robust fire door product line designed to meet your project needs for fire and smoke protection.



Floor resettable chain hoist (non-motorized)

Easily drop test and reset fire door in seconds.

Oil tempered torsion springs

Designed for 20,000 cycles as standard with higher cycle spring options available.

Energy-efficiency

Insulated with an R-value of 4.5 (635 Series only).

Sound transmission control

Curtain has an STC rating of 21 (635 Series only).

Optional smoke seal

Reduces the amount of smoke transferred from the fire side to the protected side.

Heavy-duty brush seal

Reduces air and dust infiltration.

Structural angle guides and bottom bar

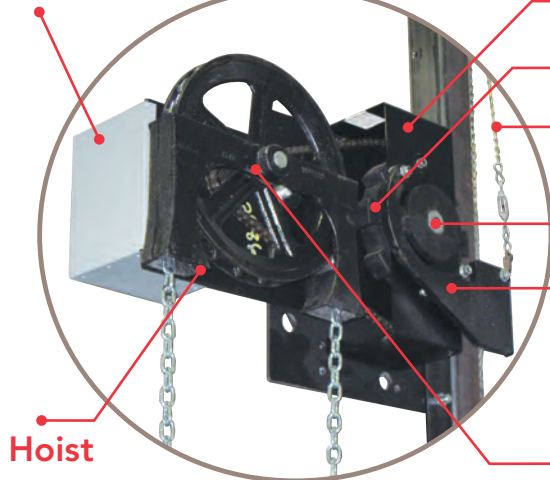
Provides smooth and reliable operation with PowderGuard™ powdercoat as standard.

Drive types

RHX® FK floor resettable motor, RHX®, RSX®, chain, crank.

Hoist Assembly View

Brake cover



Hoist

Head plate

Viscous governor

Fuse link

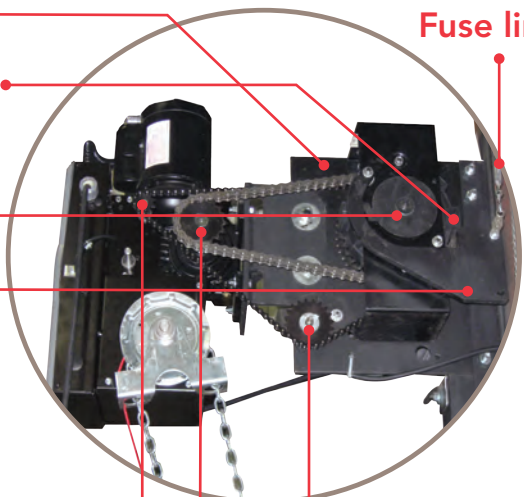
Release wheel

Drop arm

Pocket wheel

RHX® FK Motor Assembly View

Fuse link



Idler sprocket

Limit Lock® position switch sprocket *synchronizes door and operator*

Operator output sprocket

Fire Door Selection Chart

Series	630	631	634	635
Label				
UL/FM 1-1/2 hr (FM is optional)	★	★ (No FM)		★
UL/FM 3 hr (FM is optional)	★	★ (No FM)		★
ULC 3 hr	★	★		★
UL 4 hr			★	★
UL oversized door	★ ★	★ ★ ★	★ ★	★ ★ ★
FM (optional) oversized door	★ ★ ★			★ ★ ★
Applications				
Masonry	●	●	●	●
Non-masonry		●	●	●
Standard				
Maximum width	41'2" (12548 mm)	14' (4267 mm)	41'2" (12548 mm)	24' (7351 mm)
Maximum height	25'4" (7722 mm)	12' (3658 mm)	25'4" (7722 mm)	24' (7351 mm)
Curtain material	galv./ss	galv.	galv./ss	galv./ss
R-value				4.5
Sound Transmission Class				21 STC
Finish Color	gray/tan/white/brown	gray/tan/white/brown	gray/tan/white/brown	gray/tan/white/brown
Available Options				
Fire Sentinel® time-delay release device	●	●	●	●
Smoke detectors	●	●	●	●
FireLite® vision lites	●	●	●	●
UL listed brush-type smoke seals	●	●	●	●
Windload (FBC, TDI, Miami- Dade)	●	●	●	●
Operation Options				
Push-up	● (up to 80 sq ft or 7432 sq mm)	● (up to 80 sq ft or 7432 sq mm)	● (up to 80 sq ft or 7432 sq mm)	
Chain hoist	●	●	●	●
Crank	●	●	●	●
Electric Motor	●	●	●	●
Locking Option				
Cylinder locking bottom bar w/mortise cylinder	●	●	●	●
Finish Options				
Powder coat 197 premium colors	●	●	●	●

* (Up to 13'6" or 4115 mm width/height, max. 152 sq ft or 14121 sq mm)

** (Over 152 sq ft or 14121 sq mm)

*** (Over 152 sq ft or 14121 sq mm, but less than 18' or 5486 mm height) (FM reviews designs for openings over 18' or 5486 mm wide)

Note: ss = stainless steel, galv = painted, galvanized steel

Information is subject to change.



All 635 Series doors are chain hoist minimum.

Product Application Chart

DOOR LABEL	MOUNTING	WALL CONSTRUCTION	MAXIMUM WIDTH	MAXIMUM HEIGHT	MAXIMUM AREA	CERTIFYING AGENCY
4 hours	Face of Wall and Between the Jambs*	Masonry/Steel	13'-6"	13'-6"	152 sq ft	UL
4 hours	Face of Wall and Between the Jambs*	Masonry/Steel	12'	10'	120 sq ft	FM
Oversize 4 hours	Face of Wall and Between the Jambs*	Masonry/Steel	41'-2"	25'-4"	683 sq ft	UL
Oversize 4 hours	Face of Wall and Between the Jambs*	Masonry/Steel	18'	18'	324 sq ft	FM
3 hours	Face of Wall and Between the Jambs*	Non-masonry	12'	12'	144 sq ft	UL
1 ½ hours	Face of Wall and Between the Jambs*	Non-masonry	12'	10'	117 sq ft	FM
Oversize 3 hours	Face of Wall and Between the Jambs*	Non-masonry	14'	12'	168 sq ft	UL
Oversize 1 ½ hours	Face of Wall	Non-masonry	14'	11'	140 sq ft	FM
Oversize 3 hours	Face of Wall and Between the Jambs*	Steel Tube inside Non-masonry	16'	14'	224 sq ft	UL
Oversize 1 ½ hours	Face of Wall	Steel Tube inside Non-masonry	14'	11'	140 sq ft	FM
3 hours	Face of Wall	Steel Tube on masonry or Non-masonry	12'	12'	144 sq ft	UL
3 hours	Face of Wall	Steel Tube on masonry or Non-masonry	12'	10'	120 sq ft	FM
Oversize 3 hours	Face of Wall	Steel Tube on masonry or Non-masonry	24'	24'	576 sq ft	UL

* Between Jambs Doors are based on width of wall and from floor to top of coil (under lintel).
Factory Mutual (FM) reviews each size above the over size service on a case-by-case basis

Available Options

 Fire Sentinel®	Time-delay release device
FireLite® vision lite	Available in 1-1/2 hr, 3 hr, and 4 hr labels
 Smoke detectors Heat detectors	Photoelectric smoke detectors. Heat detectors are also available.
Smoke seal	UL-listed brush-type smoke seals ("S" label) to satisfy smoke retardation requirements of certain applications.
Flame baffle system	A Factory Mutual (FM) requirement.
FM Label	FM labels are available in 1-1/2 hr, 3 hr, and oversized door.
Horns	Horns and horns with strobes are available.
Wind load	Approved wind load options available for Florida Building Code (FBC), Miami-Dade and Texas Department of Insurance (TDI)
Crank or electric operation	To satisfy a variety of applications. See page 10 for more detailed information.

Technical Data	
Application	Exterior/Interior for fire rated walls
Mounting position	Between the jambs Face of wall
Operation options	Standard offering: mechanical floor resettable hoist Option: crank Option: electric motor; RHX® FK, RHX® or RSX®
Models	630 – standard fire door 631 – smaller fire door 634 – larger fire door (4 hour rating UL/FM) 635 – insulated fire door
Wind load options	Florida Building Code (FBC) Miami-Dade Texas Department of Insurance (TDI)
Drop speed	Meets NFPA 80 requirements of 6" to 24" per second
Compliance	Underwriters Laboratories (UL & ULC) – standard Meets New York City and state of California CSFM Factory Mutual (FM) – optional UL "S" label - optional
Warranty	Two-year limited warranty coverage on material and workmanship
Curtain	
Material	Steel slats in a variety of gauges. Stainless steel optional.
Finish	Standard offering: gray, tan, white, brown Optional: 197 powder coat colors Finish to match architect specification
Counterbalance System	
Counterbalance	High tensile helical torsion spring housed in a steel tube or pipe barrel assembly
Brackets	Steel plates to support counterbalance, curtain and hood
Hoist	Standard offering: mechanical floor resettable hoist system
Guides & Bottom Bar	
Guides	Three structural steel angles with a minimum thickness of 1/4" (6 mm) mounted to face of jamb. Also includes a locking bar or wind bar.
Bottom bar	Two structural steel angles 1-1/2" by 1-1/2" by 1/8" minimum. Galvanized steel available as an option. Applications: Single angle for conveyor Optional sloping bottom bar with UL limits Optional insulated bottom bar



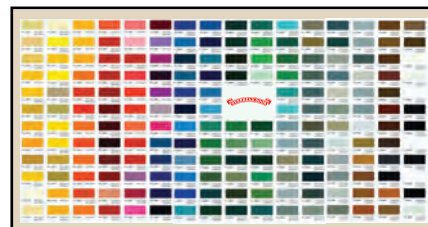
Overhead Door's FireKing®



Competition

Maximum insulation

The mineral wool insulation material used in FireKing® insulated fire doors is compressed within the steel slat, completely and uniformly filling the slat for maximum insulation. Overhead Door provides consistent quality in design and performance of our products.



Powder coat options

Powder coat paint finish is available in 197 colors, or may be color matched to architect's specifications to best complement the look of the facility.

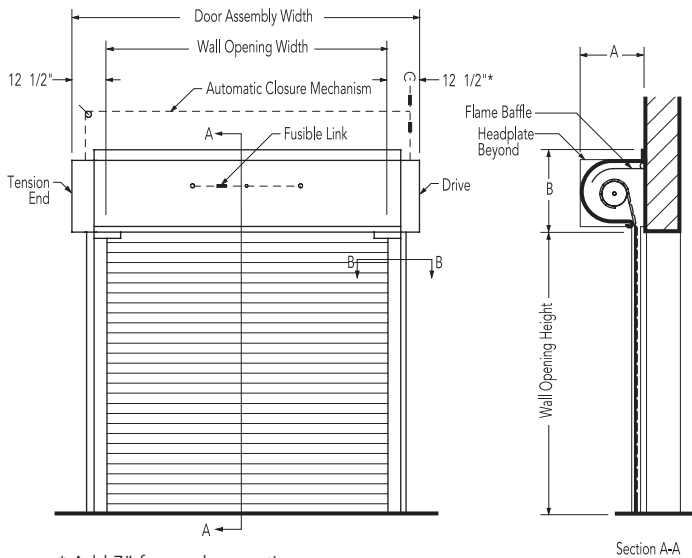
Door Clearance Elevation

Operation: crank, chain hoist*, electric

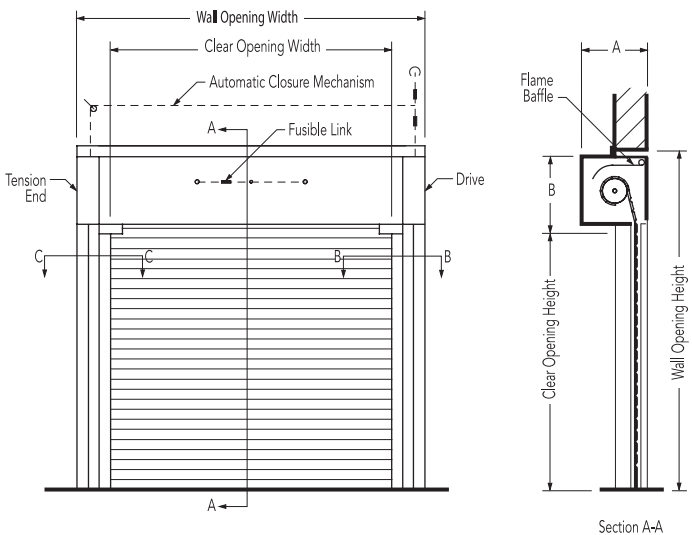
* Note: Chain hoist has only one sash chain located on drive side.

Note: For dimensions, refer to Headroom and Guide Clearance Dimension charts applicable to door type selected.

Face-of-Wall Mounted



Between Jambs Mounted

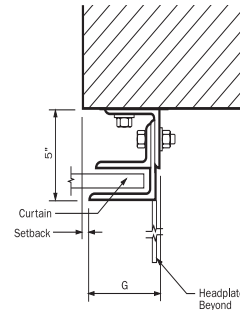


* Options may effect clearance dimensions.

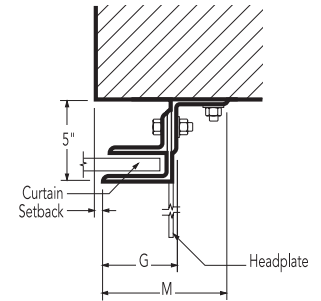
Face-of-Wall-Angle Guides

Section B-B

E Type

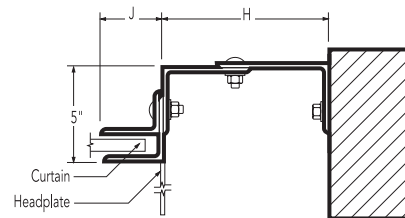


Z Type



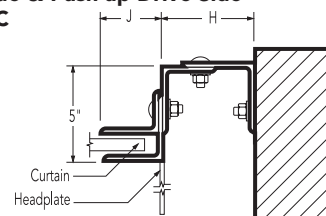
Between Jambs-Angle Guides

Drive Side - Electric, Chain or Crank Section B-B



Whenever expansion mounting bolts are used maintain a minimum of 6 bolt diameters from edge of wall

Tension Side & Push-up Drive Side Section C-C



Whenever expansion mounting bolts are used maintain a minimum of 6 bolt diameters from edge of wall

Headroom Clearance Dimensions

C187 Slats – Dimensions A and B

Max. Wall Opening Height*	C187 Slat Thru 14' - 0" Wide		Thru 20' - 0" Wide		Hood Angle Height		Expansion Gap	
	A	B**	A	B**				
Thru 8'0" (2438 mm)	17 1/2" (445 mm)	19 5/8" (498 mm)	21 1/2" (546 mm)	23 5/8" (600 mm)	3 1/4" (83 mm)		1 1/4" (32 mm)	
Thru 10'0" (3048 mm)	17 1/2" (445 mm)	19 5/8" (498 mm)	21 1/2" (546 mm)	23 5/8" (600 mm)	3 1/4" (83 mm)		1 1/2" (38 mm)	
Thru 11'0" (3353 mm)	21 1/2" (597 mm)	23 5/8" (600 mm)	21 1/2" (546 mm)	23 5/8" (600 mm)	3 1/4" (83 mm)		1 3/4" (45 mm)	
Thru 12'0" (3658 mm)	21 1/2" (597 mm)	23 5/8" (600 mm)	21 1/2" (546 mm)	23 5/8" (600 mm)	3 1/4" (83 mm)		1 3/4" (45 mm)	
Thru 13'0" (3962 mm)	21 1/2" (546 mm)	23 5/8" (600 mm)	21 1/2" (546 mm)	23 5/8" (600 mm)	4" (102 mm)		2" (51 mm)	
Thru 14'0" (4267 mm)	21 1/2" (546 mm)	23 5/8" (600 mm)	21 1/2" (546 mm)	23 5/8" (600 mm)	4" (102 mm)		2" (51 mm)	
Thru 16'0" (4877 mm)	21 1/2" (597 mm)	23 5/8" (600 mm)	21 1/2" (546 mm)	23 5/8" (600 mm)	4" (102 mm)		2 1/4" (57 mm)	
Thru 18'0" (5486 mm)	21 1/2" (546 mm)	23 5/8" (600 mm)	21 1/2" (546 mm)	23 5/8" (600 mm)	4" (102 mm)		2 1/2" (64 mm)	
Thru 19'0" (5791 mm)	21 1/2" (597 mm)	23 5/8" (600 mm)	21 1/2" (546 mm)	23 5/8" (600 mm)	4 3/4" (121 mm)		2 3/4" (70 mm)	
Thru 21'0" (6401 mm)	21 1/2" (597 mm)	23 5/8" (600 mm)	21 1/2" (546 mm)	23 5/8" (600 mm)	4 3/4" (121 mm)		3" (76 mm)	
Thru 24'0" (7315 mm)	23 1/2" (597 mm)	25 5/8" (651 mm)	25 1/2" (546 mm)	27 5/8" (702 mm)	4 3/4" (121 mm)		3 1/4" (83 mm)	

C275 Slats – Dimensions A and B

Max. Wall Opening Height*	C275 Slat Thru 14' - 0" Wide		Thru 20' - 0" Wide		Thru 24' - 0" Wide		Hood Angle Height	Expansion Gap
	A	B**	A	B**	A	B**		
Thru 8'0" (2438 mm)	19 1/2" (495 mm)	21 5/8" (549 mm)	21 1/2" (546 mm)	23 5/8" (600 mm)	21 1/2" (546 mm)	23 5/8" (600 mm)	3 1/4" (83 mm)	1 1/4" (32 mm)
Thru 10'0" (3048 mm)	19 1/2" (495 mm)	21 5/8" (549 mm)	21 1/2" (546 mm)	23 5/8" (600 mm)	21 1/2" (546 mm)	23 5/8" (600 mm)	3 1/4" (83 mm)	1 1/2" (38 mm)
Thru 11'0" (3353 mm)	19 1/2" (495 mm)	21 5/8" (546 mm)	21 1/2" (546 mm)	23 5/8" (600 mm)	23 1/2" (597 mm)	25 5/8" (651 mm)	3 1/4" (83 mm)	1 3/4" (45 mm)
Thru 12'0" (3658 mm)	21 1/2" (546 mm)	23 5/8" (600 mm)	21 1/2" (546 mm)	23 5/8" (600 mm)	23 1/2" (597 mm)	25 5/8" (651 mm)	3 1/4" (83 mm)	1 3/4" (45 mm)
Thru 13'0" (3962 mm)	21 1/2" (546 mm)	23 5/8" (600 mm)	21 1/2" (546 mm)	23 5/8" (600 mm)	23 1/2" (597 mm)	25 5/8" (651 mm)	4" (102 mm)	2" (51 mm)
Thru 14'0" (4267 mm)	21 1/2" (546 mm)	23 5/8" (600 mm)	21 1/2" (546 mm)	23 5/8" (600 mm)	23 1/2" (597 mm)	25 5/8" (651 mm)	4" (102 mm)	2" (51 mm)
Thru 16'0" (4877 mm)	21 1/2" (546 mm)	23 5/8" (600 mm)	21 1/2" (546 mm)	23 5/8" (600 mm)	25 1/2" (651 mm)	27 5/8" (702 mm)	4" (102 mm)	2 1/4" (57 mm)
Thru 18'0" (5486 mm)	21 1/2" (546 mm)	23 5/8" (600 mm)	21 1/2" (546 mm)	23 5/8" (600 mm)			4" (102 mm)	2 1/2" (64 mm)
Thru 19'0" (5791 mm)	23 1/2" (597 mm)	25 5/8" (651 mm)	21 1/2" (546 mm)	23 5/8" (600 mm)			4 3/4" (121 mm)	2 3/4" (70 mm)
Thru 21'0" (6401 mm)	23 1/2" (597 mm)	25 5/8" (651 mm)	21 1/2" (546 mm)	23 5/8" (600 mm)			4 3/4" (121 mm)	3" (76 mm)
Thru 24'0" (7315 mm)	25 1/2" (648 mm)	27 5/8" (702 mm)					4 3/4" (121 mm)	3 1/4" (83 mm)

*Consult factory

F265 Slats – Dimensions A and B

Max. Wall Opening Height*	F265 Slat Thru 14' - 0" Wide		Thru 20' - 0" Wide		Thru 24' - 0" Wide		Hood Angle Height	Expansion Gap
	A	B**	A	B**	A	B**		
Thru 8'0" (2438 mm)	21 1/2" (546 mm)	23 5/8" (600 mm)	21 1/2" (546 mm)	23 5/8" (600 mm)	21 1/2" (546 mm)	23 5/8" (600 mm)	3 1/4" (83 mm)	1 1/4" (32 mm)
Thru 10'0" (3048 mm)	21 1/2" (546 mm)	23 5/8" (600 mm)	21 1/2" (546 mm)	23 5/8" (600 mm)	21 1/2" (546 mm)	23 5/8" (600 mm)	3 1/4" (83 mm)	1 1/2" (38 mm)
Thru 11'0" (3353 mm)	21 1/2" (546 mm)	23 5/8" (600 mm)	21 1/2" (546 mm)	23 5/8" (600 mm)	23 1/2" (597 mm)	25 5/8" (651 mm)	3 1/4" (83 mm)	1 3/4" (45 mm)
Thru 12'0" (3658 mm)	21 1/2" (546 mm)	23 5/8" (600 mm)	21 1/2" (546 mm)	23 5/8" (600 mm)	23 1/2" (597 mm)	25 5/8" (651 mm)	3 1/4" (83 mm)	1 3/4" (45 mm)
Thru 13'0" (3962 mm)	21 1/2" (546 mm)	23 5/8" (600 mm)	21 1/2" (546 mm)	23 5/8" (600 mm)	23 1/2" (597 mm)	25 5/8" (651 mm)	4" (102 mm)	2" (51 mm)
Thru 14'0" (4267 mm)	21 1/2" (546 mm)	23 5/8" (600 mm)	21 1/2" (546 mm)	23 5/8" (600 mm)	23 1/2" (597 mm)	25 5/8" (651 mm)	4" (102 mm)	2" (51 mm)
Thru 16'0" (4877 mm)	23 1/2" (597 mm)	25 5/8" (651 mm)	23 1/2" (597 mm)	25 5/8" (651 mm)	25 1/2" (651 mm)	27 5/8" (702 mm)	4" (102 mm)	2 1/4" (57 mm)
Thru 18'0" (5486 mm)	23 1/2" (597 mm)	25 5/8" (651 mm)	23 1/2" (597 mm)	25 5/8" (651 mm)			4" (102 mm)	2 1/2" (64 mm)
Thru 19'0" (5791 mm)	23 1/2" (597 mm)	25 5/8" (651 mm)	25 1/2" (648 mm)	27 5/8" (702 mm)			4 3/4" (121 mm)	2 3/4" (70 mm)
Thru 21'0" (6401 mm)	23 1/2" (597 mm)	25 5/8" (651 mm)	27 1/2" (699 mm)	29 5/8" (752 mm)			4 3/4" (121 mm)	3" (76 mm)
Thru 24'0" (7315 mm)							4 3/4" (121 mm)	3 1/4" (83 mm)

*Consult factory

C187 C275 F265 Slats – Dimensions G and M*** Guide Clearance Dimensions

Max. Wall Opening Widths*	G	M	J	H (Tension End)	Dimension H*** Drive End Type of Operation	H
Thru 8'0" (2438 mm)	3 1/4" (83 mm)	5 1/2" (140 mm)	2 3/4" (70 mm)	4" (102 mm)	Push-Up	4"
Thru 12'0" (3658 mm)	3 3/4" (95 mm)	6" (152 mm)	3 1/4" (83 mm)	4" (102 mm)	Chain, Crank	7 1/2"
Thru 14'0" (4267 mm)	4" (102 mm)	5 3/4" (146 mm)	3 1/2" (89 mm)	4" (102 mm)	RSX	7 1/2"
Thru 16'0" (4877 mm)	4 1/4" (108 mm)	6" (152 mm)	3 1/2" (89 mm)	4 1/2" (114 mm)	RH-X	8 1/2"
Thru 20'0" (6401 mm)	4 3/4" (121 mm)	7" (178 mm)	4 1/4" (108 mm)	4 1/2" (114 mm)		
Thru 24'0" (7315 mm)	5 3/4" (146 mm)	8" (203 mm)	5 1/4" (133 mm)	5 1/4" (133 mm)		

*Height limit for non-masonry jambs is 12'0" (3658 mm). **Add 2" (51 mm) for electric operation. ***For max. wall opening height of 12' (3658 mm).

Slat Data

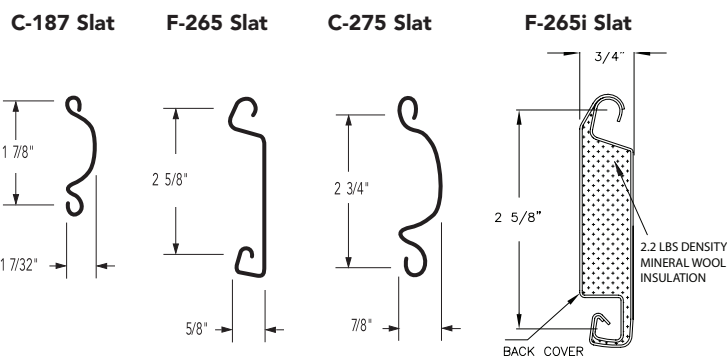
630 Face-of Wall Mounted			
Slat	Opening Width	Standard	Optional
C187	Thru 14'0" (4267 mm)	22 ga.*	20 ga. or 22 ga. ss
	Thru 20'0" (6096 mm)	20 ga.	18 ga. or 20 ga. ss
C275	Thru 14'0" (4267 mm)	22 ga.*	20 ga. or 22 ga. ss
	Thru 20'0" (6096 mm)	20 ga.	18 ga. or 20 ga. ss
	Thru 41'2" (12548 mm)	18 ga.	16 ga.
F265	Thru 14'0" (4267 mm)	22 ga.*	20 ga. or 22 ga. ss
	Thru 20'0" (6096 mm)	20 ga.	18 ga. or 20 ga. ss
	Thru 41'2" (12548 mm)	18 ga.	

631 Face-of Wall Mounted			
Slat	Opening Width	Standard	
C187	Thru 14'0" (4267 mm)	24 ga.	
F265	Thru 14'0" (4267 mm)	24 ga.	

634 Face-of Wall Mounted			
Slat	Opening Width	Standard	Optional
C187	Thru 20'0" (4267 mm)	20 ga.	18 ga. or 20 ga. ss
C275	Thru 20'0" (6096 mm)	20 ga.	18 ga. or 20 ga. ss
	Thru 41'2" (12548 mm)	18 ga.	16 ga.
F265	Thru 20'0" (6096 mm)	20 ga.	18 ga. or 20 ga. ss
	Thru 41'2" (12548 mm)	18 ga.	

635 Face-of Wall Mounted or Between the Jamb Mount			
Slat	Opening Width	Standard	Optional
F265 with back cover	Thru 24'0" wide	24 ga. front	22 ga. front
		24 ga. back	22 ga. back

Slat are galvanized and painted or stainless steel (ss).
 * Maximum wall opening height for 22 ga. is 12'0" (3658 mm).



Electric Operator Selection Guide							
	Horsepower	Rolling Door*	6-rib poly J-belt	Worm gear	Adjustable clutch	Totally enclosed	Continuous duty
Model RHX® FK	1/2, 3/4, 1, 3 HP	400 (37161)		•	•	•	F
Model RHX®	1/2, 3/4, 1 HP	480 (44591)		•	•	•	F,W,T
Model RSX®	1/2, 3/4, 1 HP	168 (15607)	•	•	•	•	F,W,T

Mounting Options: F = Front of Hood, W = Wall, T = Top of Hood

* Maximum area in square feet (square millimeters).

Electric Operators

The Overhead Door® automatic door operator product line is manufactured to meet the performance requirements of our commercial and industrial doors, offering precise control of your door system for years of trouble-free operation. To improve safety and enhance the life of your door and motor, the industry's guidelines for quality assurance recommend a single manufacturer for both door and operator. Overhead Door® commercial operators are UL 325 2010 compliant.

Entrapment Protection

Overhead Door Corporation strongly recommends the use of a primary safety device as defined by UL 325 2010. A primary safety device can be approved monitored photo-eyes or an approved monitored sensing edge. If a primary safety device is not installed, a constant contact control switch must be used to close the door. Contact Overhead Door for more information.

With the optional selection of a commercial operator for the Fire Door system the floor resettable chain hoist is not available.



Model RHX® FK

Model RHX® FK is a heavy duty motor featuring industrial gearbox in oil bath design. It offers unique features like LimitLock™, dual frequency radio system and 16 digit menu setup. Combined with FireKing® fire doors this system offers a unique floor resettable feature as well as providing for easy drop test and reset of fire door within seconds.

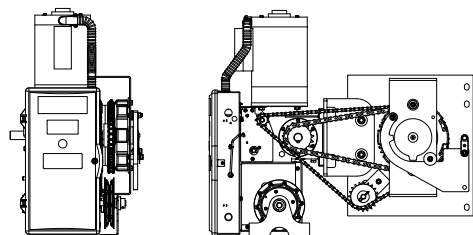
Model RHX®

Model RHX® is a heavy duty motor featuring industrial worm gear in oil bath design. The RHX® can operate doors up to 24' (7315 mm) in height and 1650 pounds (748 kg) in weight.

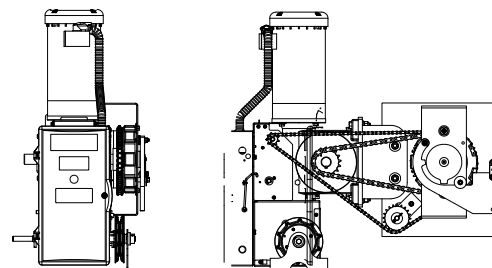
Model RSX®

Model RSX® is a standard duty commercial operator designed to operate doors up to 24' (7315 mm) in height and 1450 pounds (657 kg) in weight. It offers unique features like LimitLock™, SuperBelt™, dual frequency radio system and 16 digit menu setup.

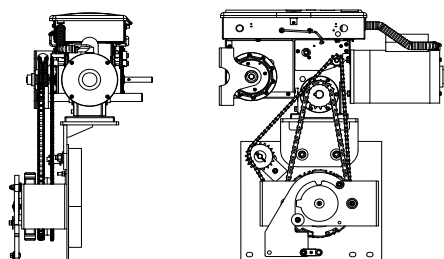
Front-of-Hood Mounted-RHX® FK 1 HP



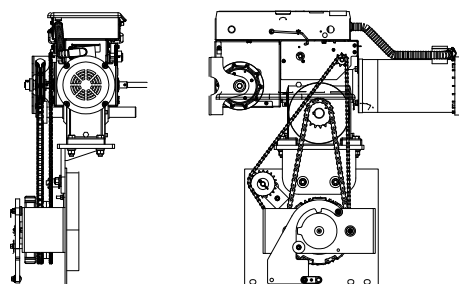
Front-of-Hood Mounted-RHX® FK 3 HP



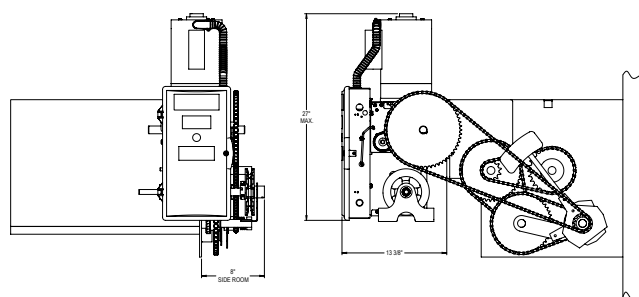
Top-of-Hood Mounted-RHX® FK 1 HP



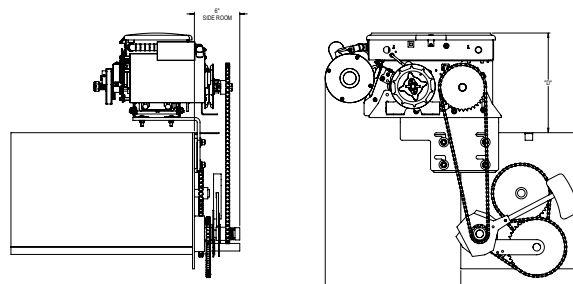
Top-of-Hood Mounted-RHX® FK 3 HP



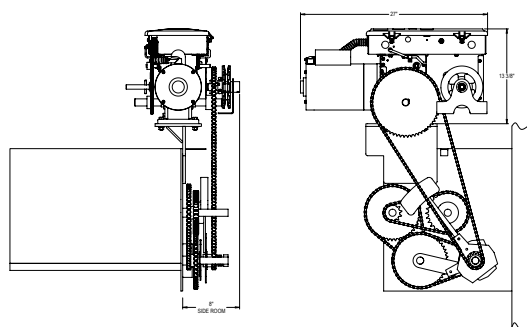
Front-of-Hood Mounted-RHX®



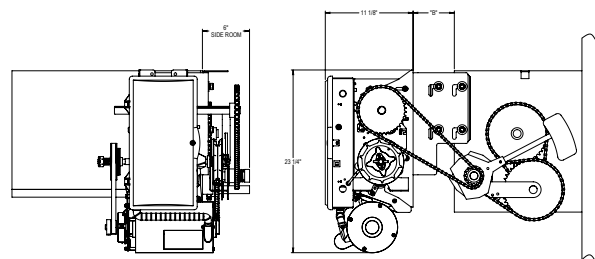
Front-of-Hood Mounted-RSX®**



Top-of-Hood Mounted -RHX®



Top-of-Hood-RSX®



**** Front-of-Hood mounted also available on between jambs mounted doors.**

The Service and Support You Need – When You Need Them

When you select an Overhead Door product, you get more than advanced product design and manufacturing superiority – you get unmatched support and fast response through our nationwide network of over 400 Red Ribbon Distributors. For over four generations, Red Ribbon Distributors have provided the industry's single-source solution for commercial and industrial door and operator systems specifically designed for integrated applications. From design and application consulting to installation and ongoing maintenance, Overhead Door Red Ribbon Distributors give you the service and support you need — when you need them.

Warranty



FireKing® doors are guaranteed with a 2-year limited warranty. See complete warranty terms for full limitations and details.

The Genuine. The Original.



Overhead Door Company of

The Meadowlands & NYC

20 Meta Lane, Lodi NJ 07644

973-471-4060

www.Overhead-Doors.com

info@dockndoor.com



APPROVED

Complies with UL 10B
as of manufactured date.
FCC Certified.

© 2012 Overhead Door Corporation. Overhead Door, Fire King, Fire Sentinel, RHX, RSX and the Ribbon logo are registered trademarks of Overhead Door Corporation. FireLight is a registered trademark of Nippon Electric Glass Company. All other trademarks are the property of their rightful owners. Consistent with our policy of continuing product improvements, we reserve the right to change product specification without notice or obligations. C900-900 2.5M 5/12 JAR

SOLD AND DISTRIBUTED BY:

Overhead Door Company of The Meadowlands & NYC

20 Meta Lane, Lodi NJ 07644

www.Overhead-Doors.com

info@dockndoor.com

T. 973-471-4060 • F. 973-471-6707