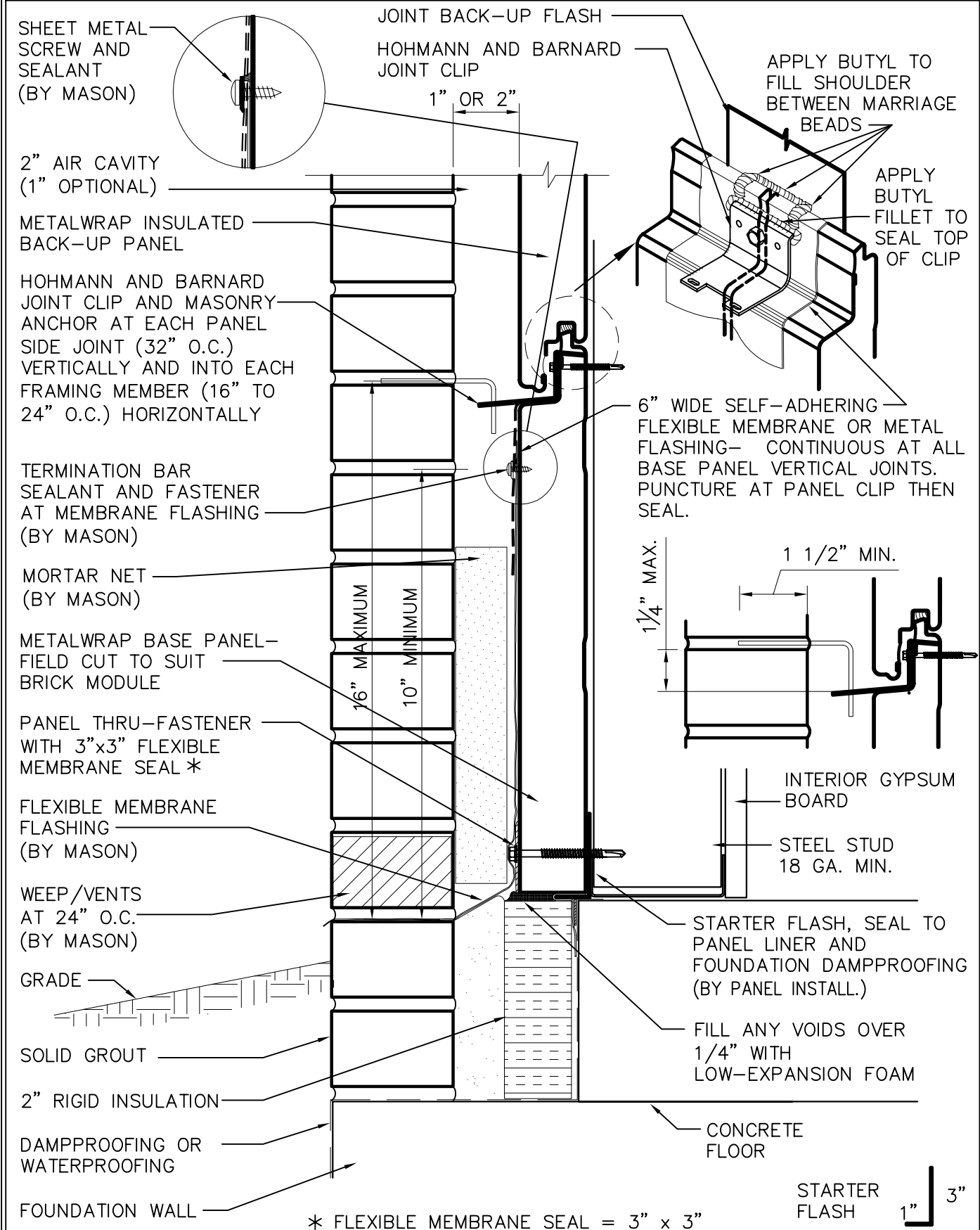


HORIZONTAL METALWRAP - MASONRY

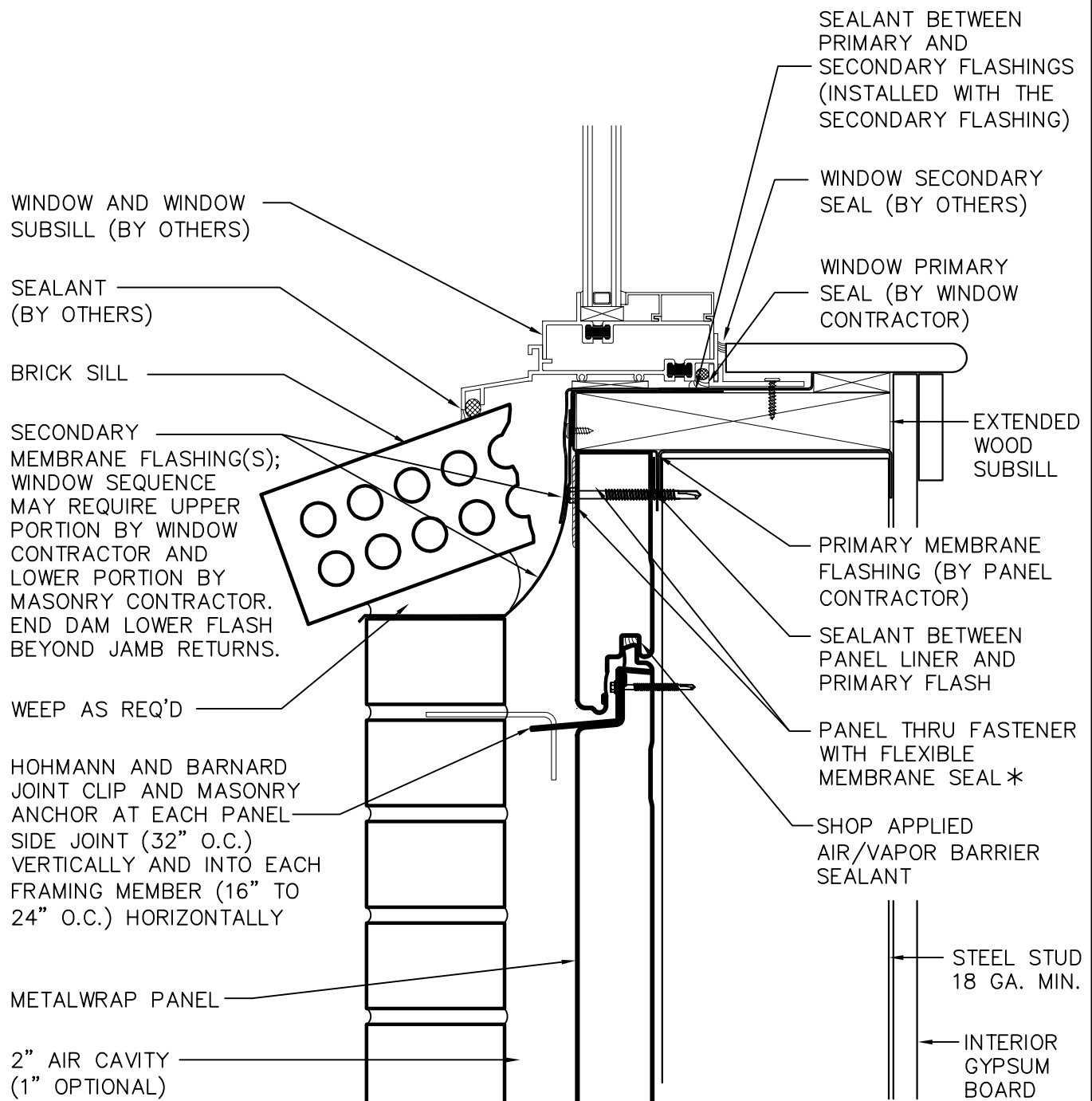


METALwrap

Foundation of Wall With Studs
MR200-01

Dec. 2012

HORIZONTAL METALWRAP - MASONRY



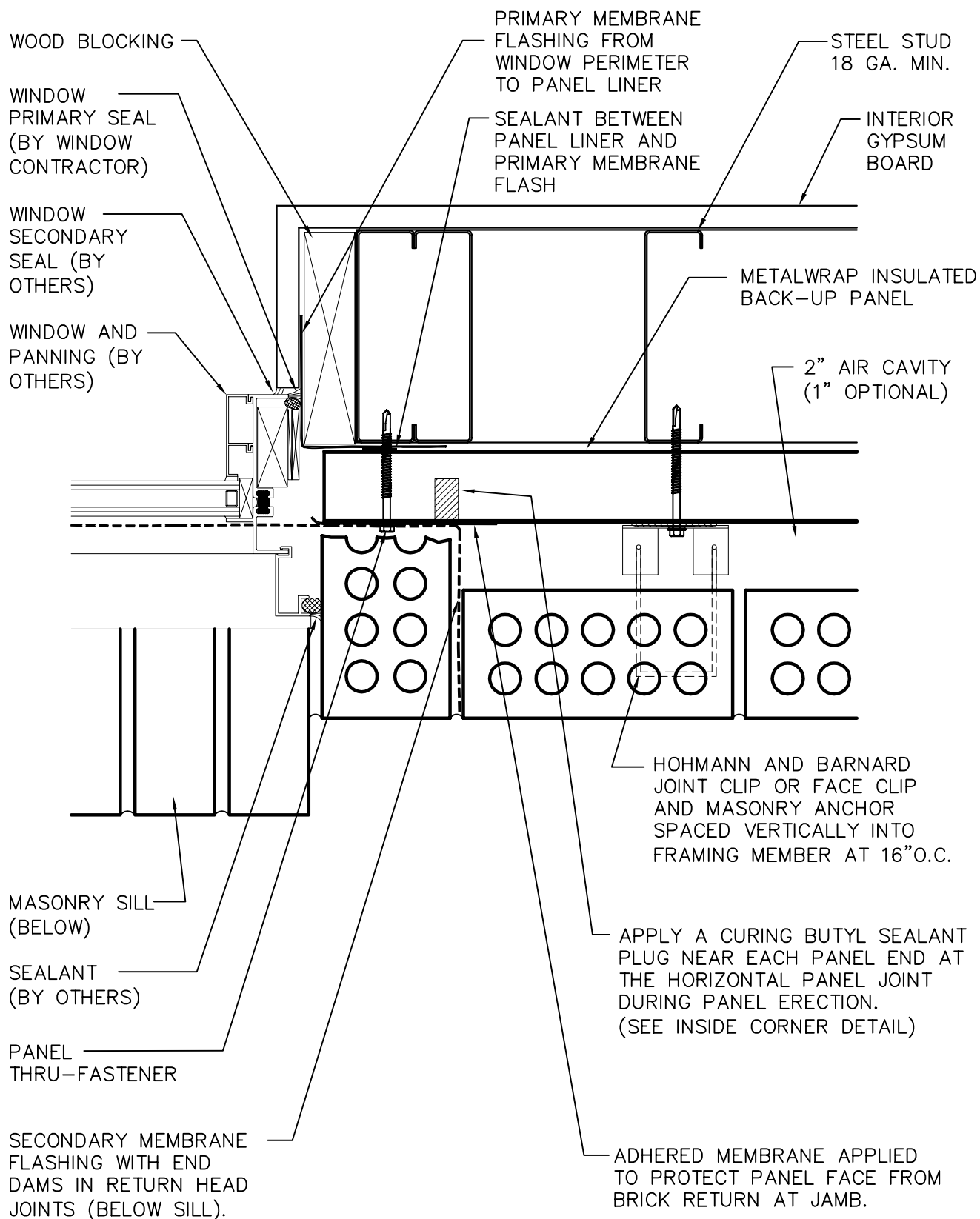
* FLEXIBLE MEMBRANE SEAL = 3" x 3"

METALwrap

Window Sill
MR200-04

Dec. 2012

HORIZONTAL METALWRAP - MASONRY



METALwrap

Window Jamb
MR200-06

Dec. 2012

HORIZONTAL METALWRAP - MASONRY

INTERIOR SIDE
MEMBRANE FLASHING;
CONTINUOUS TO BASE.

NOTCH PANEL LINER AT
CORNERS AS SHOWN
(PROVIDES A THERMAL
BREAK)

SEALANT BETWEEN
PANEL LINER AND
INTERIOR MEMBRANE

EXTERIOR SIDE
MEMBRANE FLASHING;
CONTINUOUS ONTO BASE
FLASHING BELOW.

FLEXIBLE FLASHING
MOLDED CORNER FOR
USE AT PANEL BASE
(BY MASON)

HOHMANN AND BARNARD
JOINT CLIP OR FACE CLIP
AND MASONRY ANCHOR
SPACED VERTICALLY INTO
FRAMING MEMBER AT 16" O.C.

EXPANSION JOINT,
SEALANT AND
BACKER ROD WITH
COMPRESSIBLE FILLER
(BY MASON)

2" AIR CAVITY
(1" OPTIONAL)

METALWRAP INSULATED
BACK-UP PANEL

APPLY A CURING BUTYL SEALANT
PLUG NEAR EACH PANEL END
DURING PANEL ERECTION.
(SEE DETAIL BELOW)

STEEL STUD
18 GA. MIN.

INTERIOR
GYPSUM
BOARD

MINIMUM SEALANT
CONTACT SHOWN

3/8"
MIN.

FLASHING TAPE
@ VERT. JOINTS

EXPANSION JOINT SIZE
AND LOCATION PER
ARCHTECTURAL DESIGN
TEAM

1" OR
2" 2"

SEALANT PLUG DETAIL
APPLY CURING BUTYL
SEALANT AS PANELS
ARE ERECTED.

METALwrap

Outside 90° Corner
MR200-07

Dec. 2012

HORIZONTAL METALWRAP - MASONRY

NOTCH PANEL FACE AT CORNERS AS SHOWN (PROVIDES A THERMAL BREAK)

APPLY A CURING BUTYL SEALANT PLUG NEAR EACH PANEL END DURING PANEL ERECTION. (SEE DETAIL BELOW)

SEALANT BETWEEN PANEL LINER AND CORNER FLASH

EXPANSION JOINT SIZE AND LOCATION PER ARCHITECTURAL DESIGN TEAM

CONTINUOUS INTERIOR SIDE CORNER FLASHING

EXTERIOR SIDE MEMBRANE FLASHING; CONTINUOUS ONTO BASE FLASHING BELOW.

INTERIOR GYPSUM BOARD

STEEL STUD 18 GA. MIN.

MINIMUM SEALANT CONTACT SHOWN

EXPANSION JOINT, SEALANT AND BACKER ROD WITH COMPRESSIBLE FILLER (BY MASON)

FLEXIBLE FLASHING MOLDED CORNER FOR USE AT PANEL BASE (BY MASON)

HOHMANN AND BARNARD JOINT CLIP OR FACEL CLIP AND MASONRY ANCHOR SPACED VERTICALLY INTO FRAMING MEMBER AT 16" O.C.

2" AIR CAVITY (1" OPTIONAL)

METALWRAP INSULATED BACK-UP PANEL

FLASHING TAPE @ VERT. JOINTS

SEALANT PLUG DETAIL
APPLY CURING BUTYL SEALANT AS PANELS ARE ERECTED.

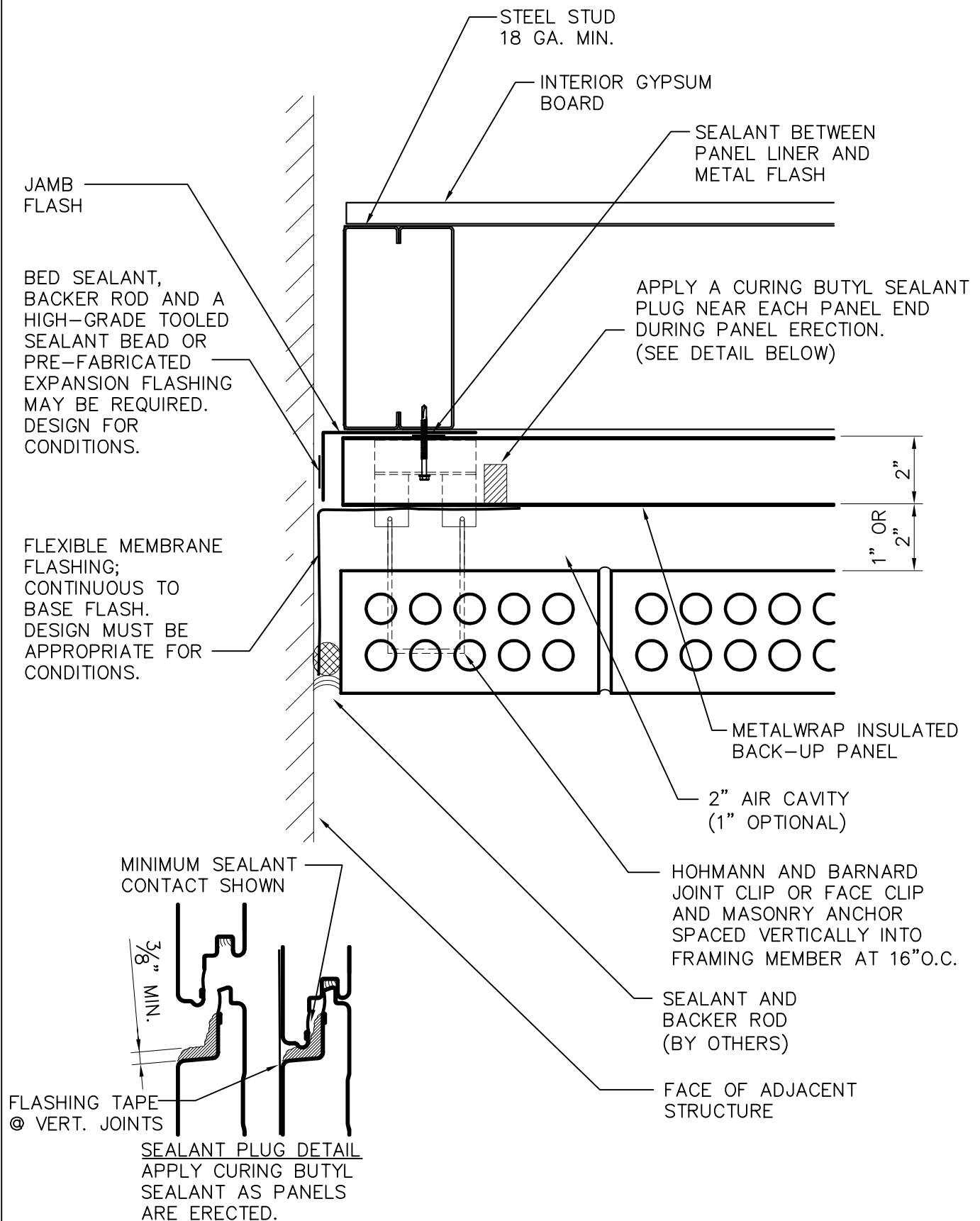
1" OR 2" 2"

METALwrap

Inside 90° Corner
MR200-08

Dec. 2012

HORIZONTAL METALWRAP - MASONRY

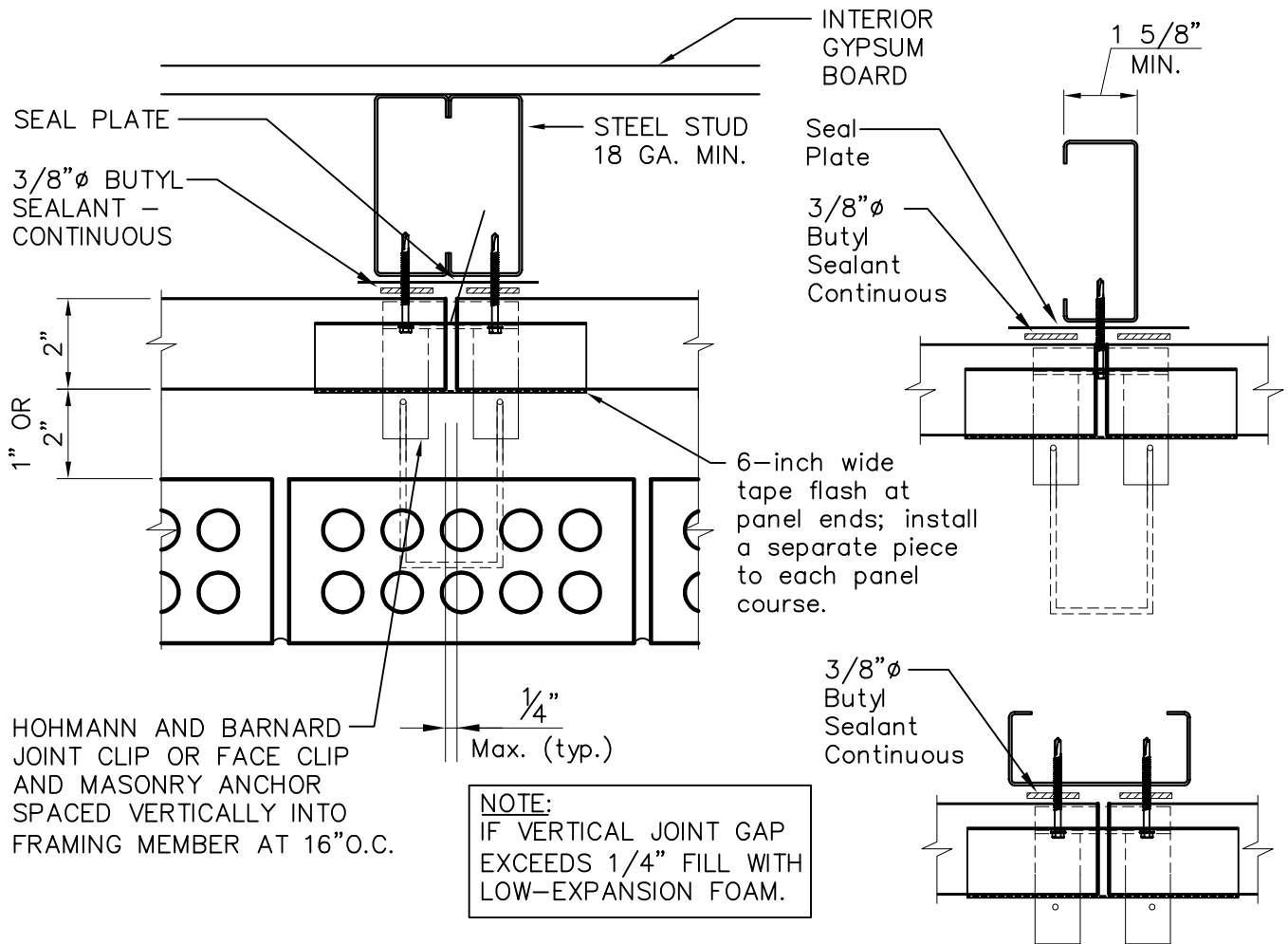


METALwrap

End Wall
MR200-09

Dec. 2012

HORIZONTAL METALWRAP - MASONRY

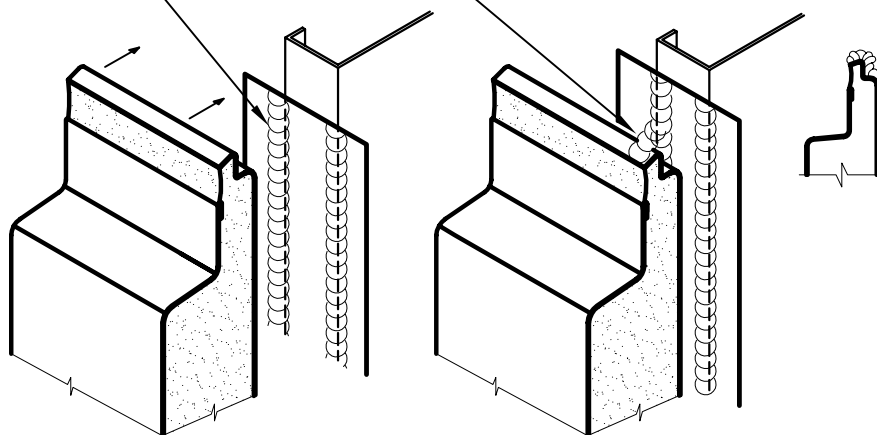


Place a bead of high grade butyl sealant over the panel liner male leg as shown. This will connect the shop installed butyl sealant to the field applied panel end, joint, perimeter and cut edge butyl sealant.

A 3/8"Ø bead of high grade butyl sealant is field applied at panel ends, joints, perimeters and cut edges.

Panel ends can be located off the standard 16" or 24" stud spacing. In this case, the wire hook tie is not required.

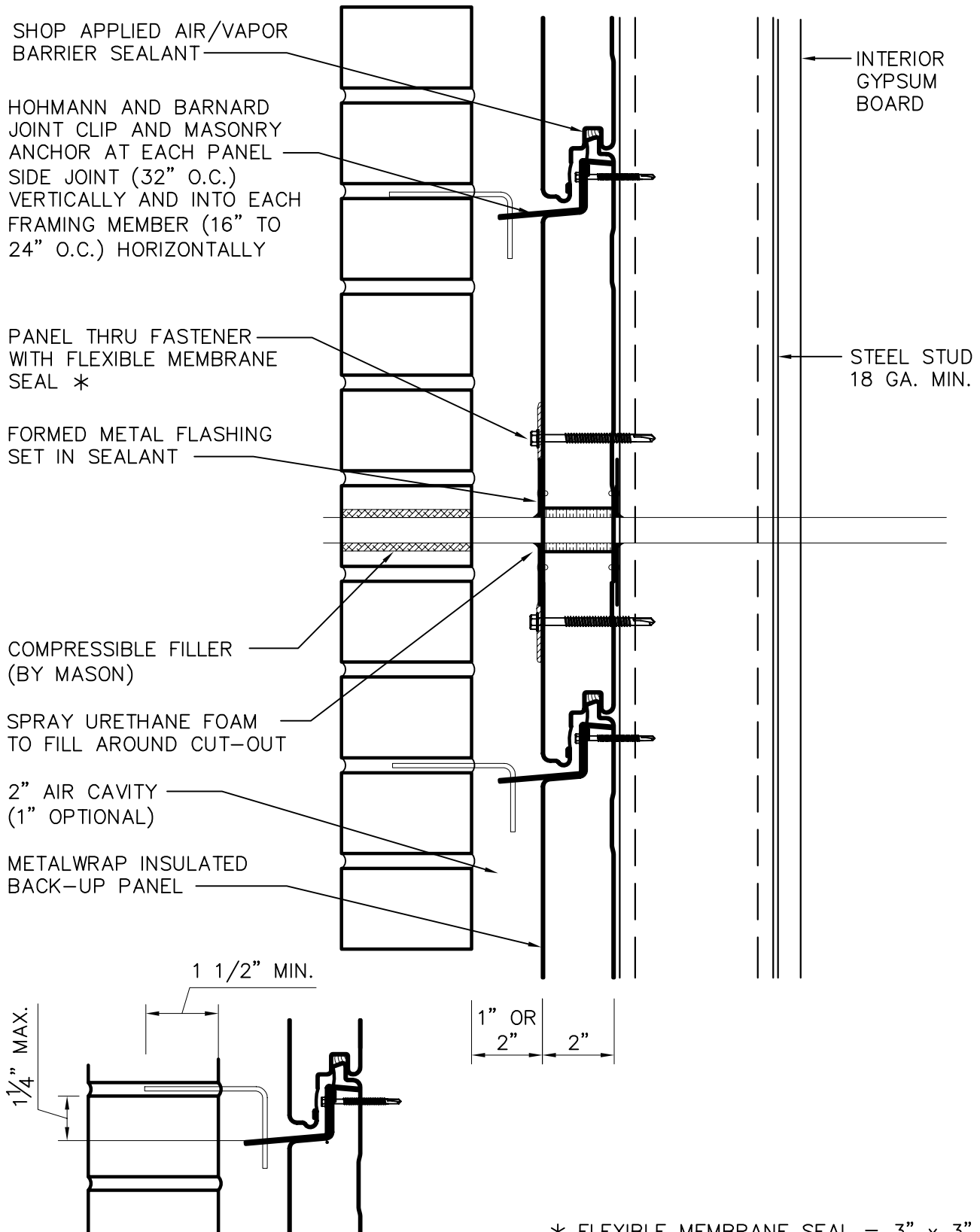
ALTERNATE Vertical Joints



METALwrap

Vertical Joint
MR200-10

HORIZONTAL METALWRAP - MASONRY



METALwrap

Small Penetration With Studs
MR200-11

Dec. 2012