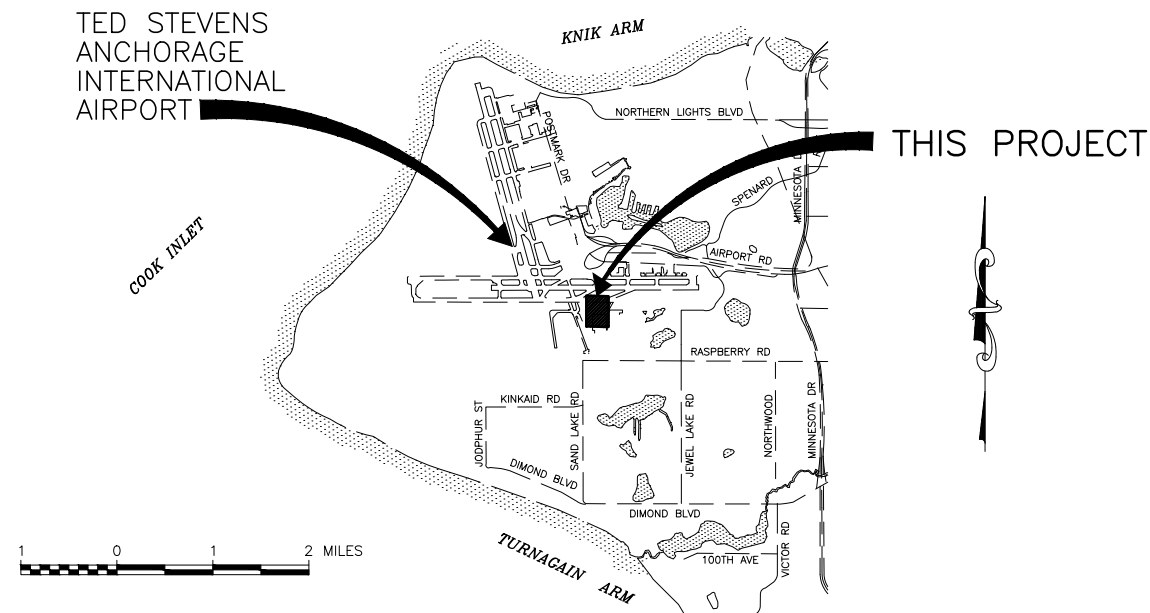


ALASKA CENTRAL REGION
LOCATION MAP

NOT TO SCALE



VICINITY MAP

T 12 N, R 4 W SEC. 3, 4, 5, & 6
T 13 N, R 4 W, SEC. 20, 21, 27, 28, 29, 31, 32, 33, 34, & 35
SEWARD MERIDIAN
U.S.G.S. ANCHORAGE (A-8), ALASKA

TED STEVENS ANCHORAGE
INTENTIONAL AIRPORT

CONSTRUCTION PLANS
TED STEVENS
ANCHORAGE INTERNATIONAL AIRPORT
ANCHORAGE, ALASKA
ANC KULIS RAMP TEMPORARY REPAIR
PROJECT No. CSAPT01323

PS&E REVIEW
APRIL 2025


APPROVED	DATE
LUKE BOWLAND, P.E.	REGIONAL PRECONSTRUCTION ENGINEER
APPROVED	DATE
JENNIFER PEPIN, P.E., CM	ENGINEERING AND ENVIRONMENTAL MANAGER
APPROVED	DATE
JENNIFER LOMBARDO, P.E.	PROJECT MANAGER
CONCUR	DATE
JOEL G. ST. AUBIN, P.E.	REGIONAL CONSTRUCTION ENGINEER

PLANS DEVELOPED BY: CRW ENGINEERING GROUP 3940 ARCTIC BLVD. SUITE 300 ANCHORAGE, ALASKA 99503 (907) 562-3252 #AECL882-AK				STATE OF ALASKA DEPARTMENT OF TRANSPORTATION AND PUBLIC FACILITIES CENTRAL REGION 4111 AVIATION AVE., ANCHORAGE ALASKA 99502 PHONE (907) 269-0590	TED STEVENS ANCHORAGE ANCHORAGE, ALASKA ANC KULIS RAMP TEMPORARY REPAIR PROJECT No. CSAPT01323 TITLE, SIGNATURES, LOCATION MAP & VICINITY MAP	DATE: APRIL 2025
						SHEET: 1 of 11
	BY	DATE	REVISION			

INDEX		LEGEND			ESTIMATED QUANTITIES			
SHEET TITLE	SHEET No.	DESCRIPTION	EXISTING	PROPOSED	No.	ITEM	UNIT	QUANTITY
TITLE, SIGNATURES, LOCATION MAP & VICINITY MAP	1	AIRPORT PROPERTY BOUNDARY			G100.010.0000	MOBILIZATION AND DEMOBILIZATION	L.S.	ALL REQ'D
INDEX, LEGEND, ABBREVIATIONS	2	BUILDING			G135.010.0000	CONSTRUCTION SURVEYING BY THE CONTRACTOR	L.S.	ALL REQ'D
PROJECT LAYOUT PLAN	3	CONCRETE			G135.020.0000	EXTRA THREE PERSON SURVEY PARTY	hour	20
DEMOLITION PLAN	4	CONTOURS			G150.020.0075	EQUIPMENT RENTAL, DOZER 75-HP MINIMUM	C.S.	ALL REQ'D
TYPICAL SECTIONS	5	COMMUNICATION MANHOLE			G150.030.0000	EQUIPMENT RENTAL, VAC-TRUCK	C.S.	ALL REQ'D
SITE PLAN	6	CULVERT WITH END SECTIONS			G300.010.0000	CPM SCHEDULING	L.S.	ALL REQ'D
GRADING PLAN	7	ELECTRICAL LINE (UNDERGROUND)			G700.010.0000	AIRPORT FLAGGER	C.S.	ALL REQ'D
UNCLASSIFIED DISPOSAL AREA GRADING PLAN	8	FENCE (CHAIN POST)			L125.210.0000	ADJUST RUNWAY & TAXIWAY LIGHT	EACH	8
PAVEMENT MARKING PLAN	9	FUEL GROUND ROD			P152.010.0000	UNCLASSIFIED EXCAVATION	C.Y.	4,710
PAVEMENT MARKING DETAILS	10	GRAVEL EDGE/EDGE OF RAP			P165.010.0000	REMOVAL OF STRUCTURES	L.S.	ALL REQ'D
TAXIWAY C LIGHTING PLAN & DETAIL	11	HAUL ROUTE			P171.020.0000	TEMPORARY CONTAMINATED SOIL STOCKPILE	L.S.	ALL REQ'D
		LEASE LOT LINE			P209.020.0000	CRUSHED AGGREGATE BASE COURSE	TON	190
		MONITORING WELL			P401.010.0030	HOT MIX ASPHALT TYPE II, CLASS A	TON	280
		PAINT STRIPE			P401.010.0065	HOT MIX ASPHALT TYPE V, CLASS S	TON	8,890
		PAVEMENT			P401.040.5834	ASPHALT BINDER, PG 58-34E	TON	500
		PAVEMENT/SHOULDER (EDGE)			P401.080.0000	HOT MIX ASPHALT PRICE ADJUSTMENT	C.S.	ALL REQ'D
		POINT NUMBER			P401.090.0000	ASPHALT MATERIAL PRICE ADJUSTMENT	C.S.	ALL REQ'D
		ROADWAYS (EDGE, GRAVEL)			P401.110.0000	LONGITUDINAL JOINT DENSITY PRICE ADJUSTMENT	C.S.	ALL REQ'D
		STORM DRAIN CLEANOUT			P401.120.0000	ASPHALT BINDER QUALITY PRICE ADJUSTMENT	C.S.	ALL REQ'D
		STORM DRAIN LINE (UNDERGROUND)			P603.010.0010	TACK COAT, STE-1	TON	22
		STORM DRAIN MANHOLE			P620.010.0000	RUNWAY AND TAXIWAY PAINTING	S.F.	6,899
		TAXIWAY EDGE LIGHT			P641.010.0000	EROSION, SEDIMENT, AND POLLUTION CONTROL ADMINISTRATION	L.S.	ALL REQ'D
		TAXIWAY HOLD EDGE LIGHT			P641.050.0000	TEMPORARY EROSION, SEDIMENT, AND POLLUTION CONTROL BY DIRECTIVE	C.S.	ALL REQ'D
		TIEDOWN			P641.060.0000	WITHHOLDING	C.S.	ALL REQ'D
					P641.070.0000	SWPPP MANAGER	L.S.	ALL REQ'D
					P641.110.0000	SWPPPTRACK	C.S.	ALL REQ'D
					P670.010.0000	HAZARD MARKER BARRIER, PLASTIC	EACH	270

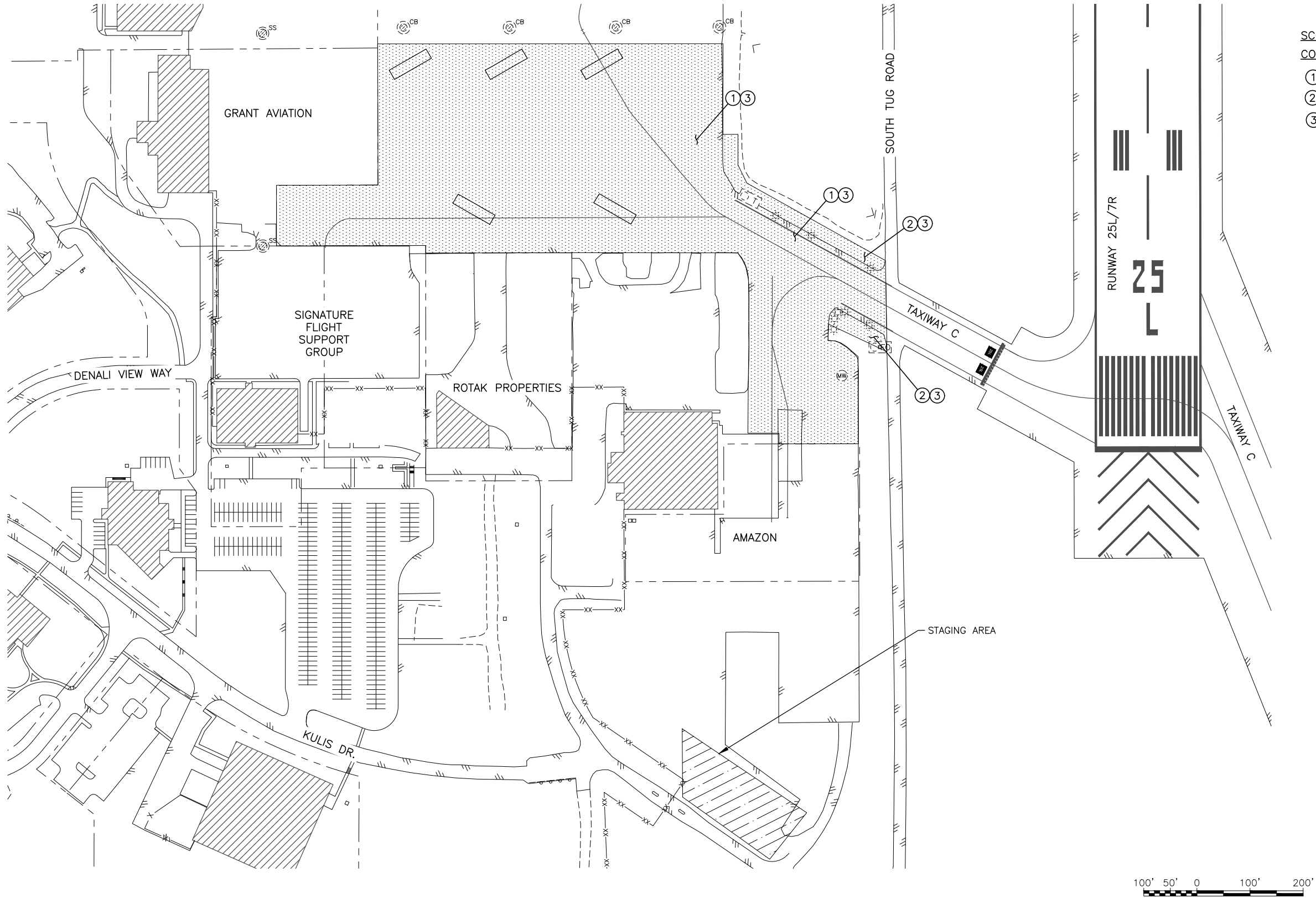
APPENDIX DRAWINGS		ABBREVIATIONS	
SHEET TITLE	SHEET No.		
APPENDIX B		ADEC	AK DEPARTMENT OF ENVIRONMENTAL CONSERVATION
SURVEY CONTROL	(TO BE PROVIDED AT FINAL PS&E)	ANC	ANCHORAGE INTERNATIONAL AIRPORT
APPENDIX C		ATB	ASPHALT TREATED BASE
CONSTRUCTION SAFETY AND PHASING PLAN	AC1-AC3	CABC	CRUSHED AGGREGATE BASE COURSE
		CL	CENTERLINE
		CF	CUBIC FEET
		CS	CONTINGENT SUM
		CY	CUBIC YARD
		DIA	DIAMETER
		DOT	DEPARTMENT OF TRANSPORTATION
		EOC	EDGE OF CONCRETE
		EOP	EDGE OF PAVEMENT
		ESCP	EROSION AND SEDIMENT CONTROL PLAN
		FAA	FEDERAL AVIATION ADMINISTRATION
		HMA	HOT MIX ASPHALT
		IN	INCH
		LB	POUND
		LF	LINEAR FOOT
		LS	LUMP SUM
		LT	LEFT
		ME	MATCH EXISTING
		NTS	NOT TO SCALE
		PC	POINT OF CURVATURE
		PCC	PORTLAND CEMENT CONCRETE
		PM	PAVEMENT MARKING
		PS&E	PLANS, SPECIFICATIONS, AND ESTIMATE
		PT	POINT OF TANGENCY
		R	RADIUS
		RD	ROAD
		REQ'D	REQUIRED
		RON	REMAIN OVER NIGHT
		RP	RADIUS POINT
		RT	RIGHT
		RW	RUNWAY
		SF	SQUARE FEET
		SWPPP	STORM WATER POLLUTION PREVENTION PLAN
		SY	SQUARE YARD
		TL	TAXILANE
		TW	TAXIWAY
		TYP	TYPICAL
		WWF	WELDED WIRE FABRIC

ESTIMATING FACTORS		
No.	ITEM	FACTOR
P209.020.0000	CRUSHED AGGREGATE BASE COURSE	2.00 TON/CY
P401.010.0030	HOT MIX ASPHALT TYPE II, CLASS A	2.05 TON/CY
P401.010.0065	HOT MIX ASPHALT TYPE V, CLASS S	2.05 TON/CY
P401.040.5834	ASPHALT BINDER, PG 58-34E	5.5% OF P401.010.00XX
P603.010.0010	TACK COAT, STE-1	0.8416 LB/SY

	PLANS DEVELOPED BY: CRW ENGINEERING GROUP 3940 ARCTIC BLVD. SUITE 300 ANCHORAGE, ALASKA 99503 (907) 562-3252 #AECL882-AK			
	BY	DATE	REVISION	

STATE OF ALASKA DEPARTMENT OF TRANSPORTATION AND PUBLIC FACILITIES CENTRAL REGION 4111 AVIATION AVE., ANCHORAGE ALASKA 99502 PHONE (907) 269-0590	TED STEVENS ANCHORAGE ANCHORAGE, ALASKA ANC KULIS RAMP TEMPORARY REPAIR PROJECT No. CSAPT01323 INDEX, LEGEND, ABBREVIATIONS	DATE: APRIL 2025
		SHEET: 2 OF 11

4/1/2025 1:31 PM
3
Date Revised: KY
Layout Name: EH
File Path and Name: \\craweng.com\Projects\JobsData\30209.16 ANC Kulis Ramp Temporary Repair\00 CADD\01 Working Set\01 Civil\01323-ANC-Project Layout Plan.dwg
Designed By: KY
Drawn By: EH
Checked By: MH



SCOPE OF THE PROJECT INCLUDES, BUT IS NOT LIMITED TO CONSTRUCTION OF THE FOLLOWING:

- 1 REHABILITATE TAXIWAY C AND KULIS RAMP
- 2 WIDEN TAXIWAY C SHOULDER
- 3 REPLACE PAVEMENT MARKINGS & ADJUST TAXIWAY EDGE LIGHTS

NOTES

1. SEE AC SHEETS FOR HAUL ROUTE INFORMATION.
2. SHARE ACCESS WITH CONTRACTORS WORKING ON OTHER AIRPORT CONSTRUCTION PROJECTS AS DIRECTED BY THE ENGINEER.
3. PROJECT COORDINATE SYSTEM AND STATIONING SHOWN IN THESE PLANS SHALL BE MAINTAINED THROUGHOUT THE PROJECT AND UTILIZED IN THE PROJECT AS-BUILTS.

LEGEND

- PROJECT LIMITS
- STAGING AREA



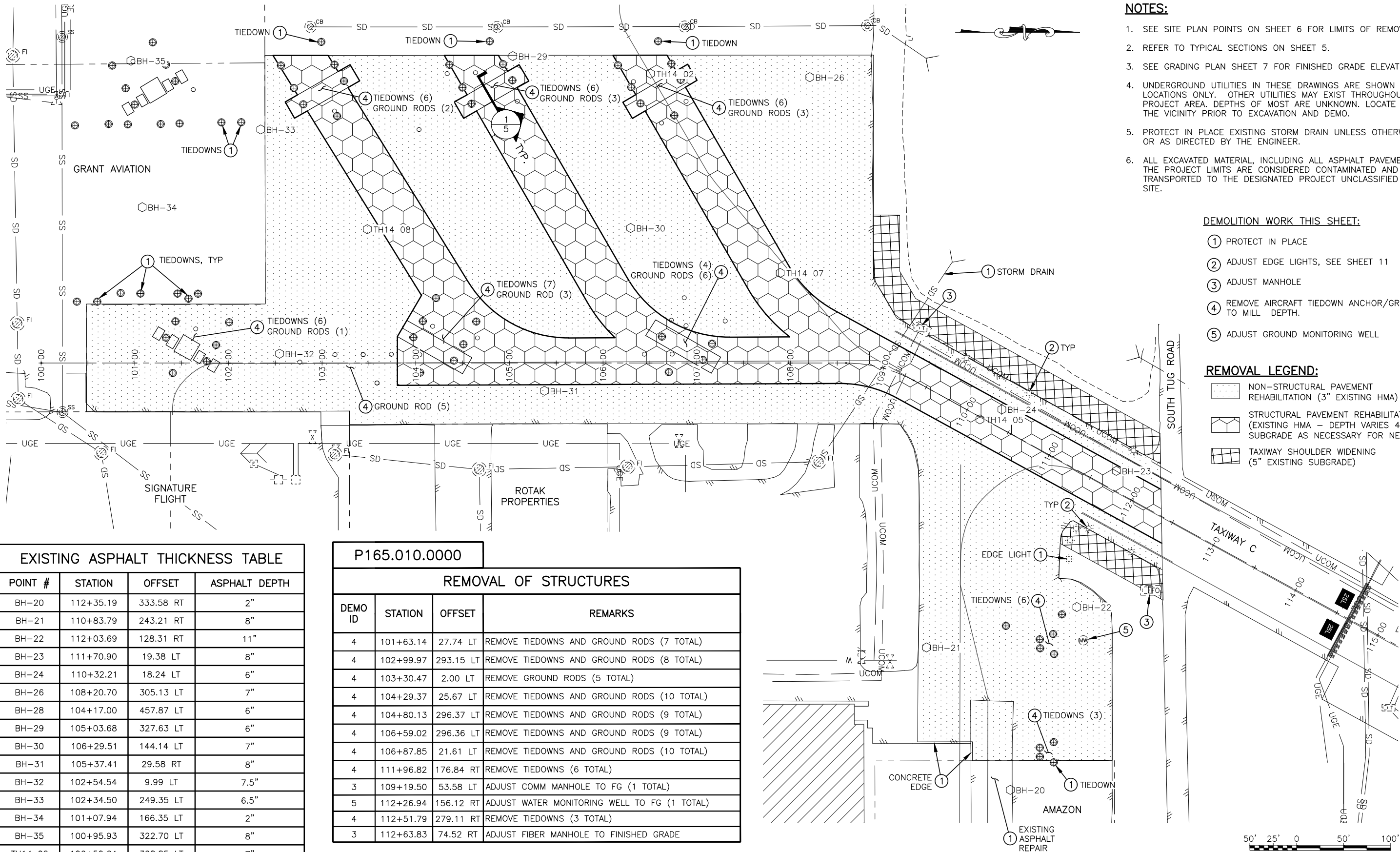
PLANS DEVELOPED BY:
CRW ENGINEERING GROUP
3940 ARCTIC BLVD. SUITE 300
ANCHORAGE, ALASKA 99503
(907) 562-3252
#AECL882-AK

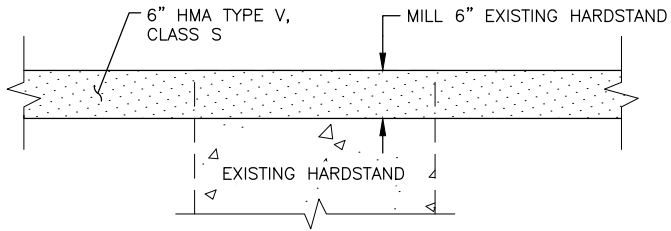
BY	DATE	REVISION

STATE OF ALASKA
DEPARTMENT OF TRANSPORTATION
AND PUBLIC FACILITIES
CENTRAL REGION
4111 AVIATION AVE., ANCHORAGE ALASKA 99502
PHONE (907) 269-0590

TED STEVENS ANCHORAGE
ANCHORAGE, ALASKA
ANC KULIS RAMP TEMPORARY REPAIR
PROJECT No. CSAPT01323
PROJECT LAYOUT PLAN

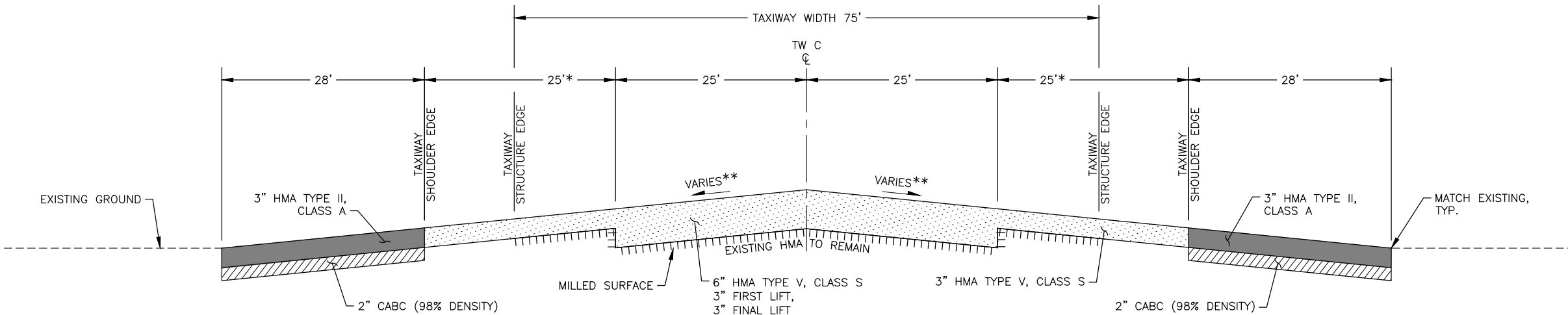
DATE:
APRIL 2025
SHEET:
3 OF 11





HARDSTAND PAVEMENT OVERLAY

SCALE: NTS



TAXIWAY C / KULIS RAMP

SCALE: NTS

* DIMENSIONS VARY, SEE SITE PLAN AND GRADING SHEETS

** SLOPE VARIES, SEE GRADING SHEETS

SHEET LEGEND:

- EXISTING HARDSTAND
- HMA TYPE V, CLASS S
- HMA TYPE II, CLASS A
- CABG
- MILLED SURFACE

NOTES:

- ALL PAVEMENT CUTS SHALL BE MADE WITH A SAW AND PROTECTED FROM DAMAGE.
- STE-1 TACK COAT REQUIRED ON ALL MILLED SURFACES, BETWEEN ALL PAVEMENT LIFTS, AND ON ALL TRANSVERSE JOINTS. APPLY TACK COAT BETWEEN CONCRETE AND NEW HMA.
- DENSITY CALLOUTS IN THE TYPICAL SECTIONS REPRESENT THE REQUIRED MINIMUM PRESENT OF THE MAXIMUM DENSITY.
- APPLY JOINT ADHESIVE BETWEEN ALL NEW AND EXISTING ASPHALT, AND BETWEEN ALL NEW ASPHALT AND EXISTING CONCRETE.

**TO BE PROVIDED
AT FINAL PS&E**

TIEDOWN ANCHOR REMOVAL DETAIL

SCALE: NTS



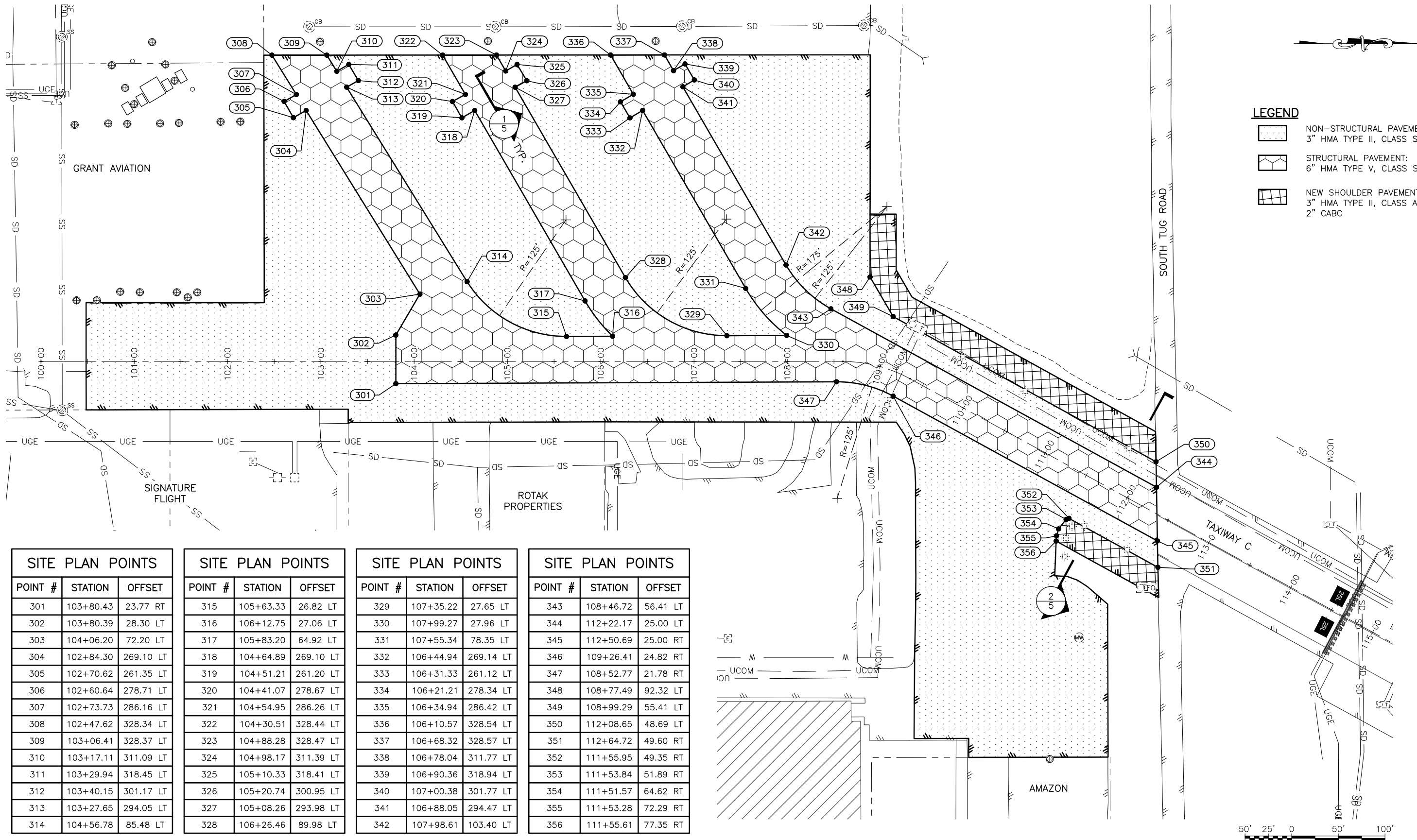
PLANS DEVELOPED BY:
CRW ENGINEERING GROUP
3940 ARCTIC BLVD. SUITE 300
ANCHORAGE, ALASKA 99503
(907) 562-3252
#AECL882-AK

BY DATE REVISION

**STATE OF ALASKA
DEPARTMENT OF TRANSPORTATION
AND PUBLIC FACILITIES
CENTRAL REGION
4111 AVIATION AVE., ANCHORAGE ALASKA 99502
PHONE (907) 269-0590**

**TED STEVENS ANCHORAGE
ANCHORAGE, ALASKA
ANC KULIS RAMP TEMPORARY REPAIR
PROJECT No. CSAPT01323
TYPICAL SECTIONS**

DATE:
APRIL 2025
SHEET:
5 OF 11



SITE PLAN POINTS		
POINT #	STATION	OFFSET
301	103+80.43	23.77 RT
302	103+80.39	28.30 LT
303	104+06.20	72.20 LT
304	102+84.30	269.10 LT
305	102+70.62	261.35 LT
306	102+60.64	278.71 LT
307	102+73.73	286.16 LT
308	102+47.62	328.34 LT
309	103+06.41	328.37 LT
310	103+17.11	311.09 LT
311	103+29.94	318.45 LT
312	103+40.15	301.17 LT
313	103+27.65	294.05 LT
314	104+56.78	85.48 LT

SITE PLAN POINTS		
POINT #	STATION	OFFSET
315	105+63.33	26.82 LT
316	106+12.75	27.06 LT
317	105+83.20	64.92 LT
318	104+64.89	269.10 LT
319	104+51.21	261.20 LT
320	104+41.07	278.67 LT
321	104+54.95	286.26 LT
322	104+30.51	328.44 LT
323	104+88.28	328.47 LT
324	104+98.17	311.39 LT
325	105+10.33	318.41 LT
326	105+20.74	300.95 LT
327	105+08.26	293.98 LT
328	106+26.46	89.98 LT

SITE PLAN POINTS		
POINT #	STATION	OFFSET
329	107+35.22	27.65 LT
330	107+99.27	27.96 LT
331	107+55.34	78.35 LT
332	106+44.94	269.14 LT
333	106+31.33	261.12 LT
334	106+21.21	278.34 LT
335	106+34.94	286.42 LT
336	106+10.57	328.54 LT
337	106+68.32	328.57 LT
338	106+78.04	311.77 LT
339	106+90.36	318.94 LT
340	107+00.38	301.77 LT
341	106+88.05	294.47 LT
342	107+98.61	103.40 LT

SITE PLAN POINTS		
POINT #	STATION	OFFSET
343	108+46.72	56.41 LT
344	112+22.17	25.00 LT
345	112+50.69	25.00 RT
346	109+26.41	24.82 RT
347	108+52.77	21.78 RT
348	108+77.49	92.32 LT
349	108+99.29	55.41 LT
350	112+08.65	48.69 LT
351	112+64.72	49.60 RT
352	111+55.95	49.35 RT
353	111+53.84	51.89 RT
354	111+51.57	64.62 RT
355	111+53.28	72.29 RT
356	111+55.61	77.35 RT



PLANS DEVELOPED BY:
CRW ENGINEERING GROUP
3940 ARCTIC BLVD. SUITE 300
ANCHORAGE, ALASKA 99503
(907) 562-3252
#AECL882-AK

BY	DATE	REVISION

STATE OF ALASKA
DEPARTMENT OF TRANSPORTATION
AND PUBLIC FACILITIES
CENTRAL REGION
4111 AVIATION AVE., ANCHORAGE ALASKA 99502
PHONE (907) 269-0590

TED STEVENS ANCHORAGE
ANCHORAGE, ALASKA
ANC KULIS RAMP TEMPORARY REPAIR
PROJECT No. CSAPT01323
SITE PLAN

DATE:
APRIL 2025
SHEET:
6 of 11

Date Revised: 4/1/2025 1:37 PM

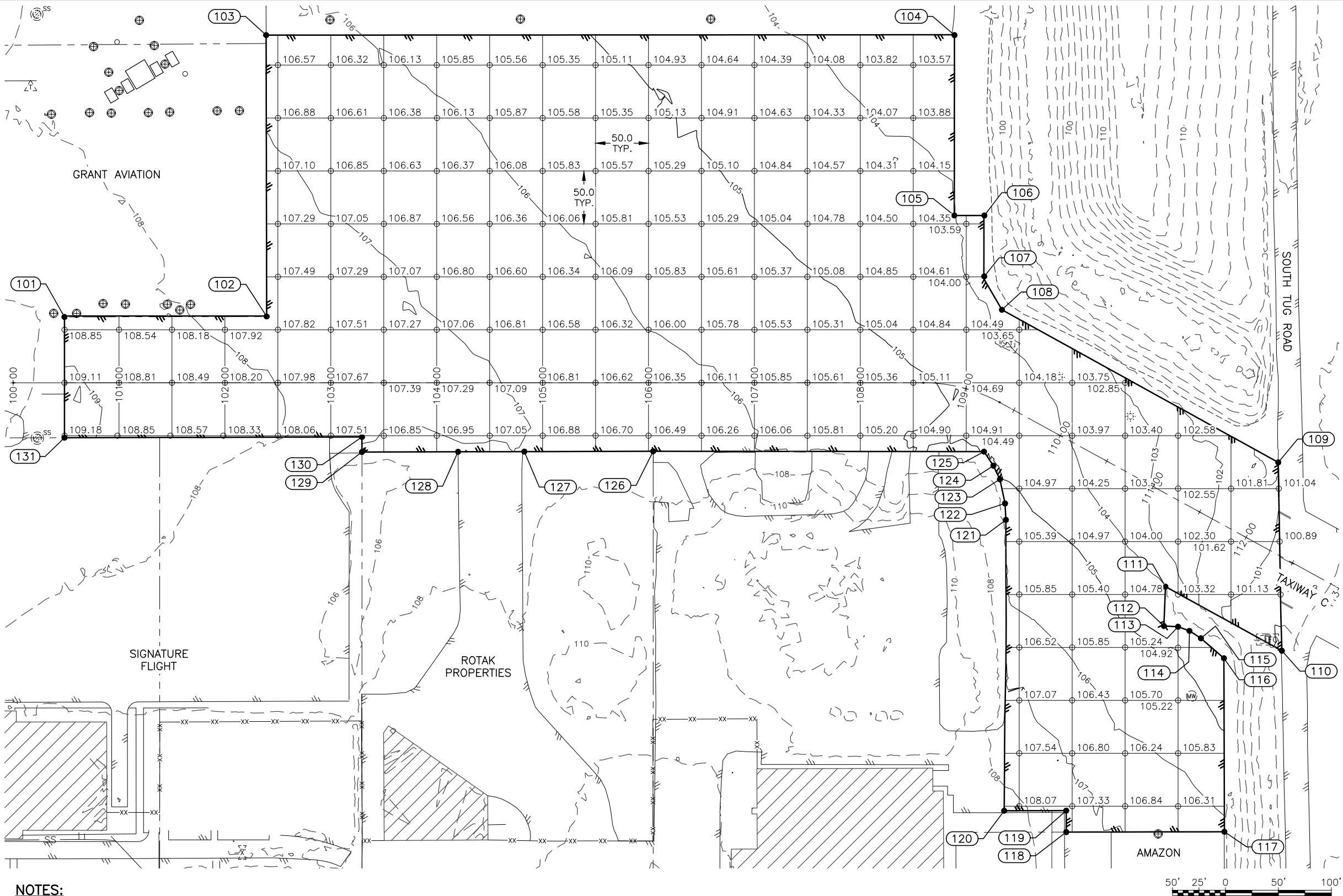
Layout Name: 7

File Path and Name: \\craweng.com\Projects\JobsData\30209\16 ANC Kulis Ramp Temporary Repair\00 CAD\01 Working Set\01 Civil\01323-ANC-Grading Plan.dwg

Designed By: KY

Drawn By: EH

Checked By: MH



NOTES:

- ELEVATIONS SHOWN ARE TOP OF FINISHED GRADE.
- THE BASIS OF THE GRADING GRID IS 50' OFFSET INCREMENTS OF THE KULIS RAMP ALIGNMENT BETWEEN STATIONS 101+00 & 108+00. ADDITIONAL SPOT ELEVATIONS ARE SHOWN AT CRITICAL LOCATIONS WHERE CHANGES IN GRADE AND/OR CHANGES IN THE PAVEMENT SECTION OCCUR.
- PROVIDE SMOOTH TRANSITIONS BETWEEN ALL FINISHED GRADE AND SPOT ELEVATIONS.
- SEE DEMOLITION SHEET 4 FOR REMOVAL ITEMS.
- PROPOSED MARKINGS AND ELECTRICAL SYSTEMS NOT SHOWN FOR CLARITY.



PLANS DEVELOPED BY:
CRW ENGINEERING GROUP
3940 ARCTIC BLVD. SUITE 300
ANCHORAGE, ALASKA 99503
(907) 562-3252
#AECL882-AK

BY	DATE	REVISION

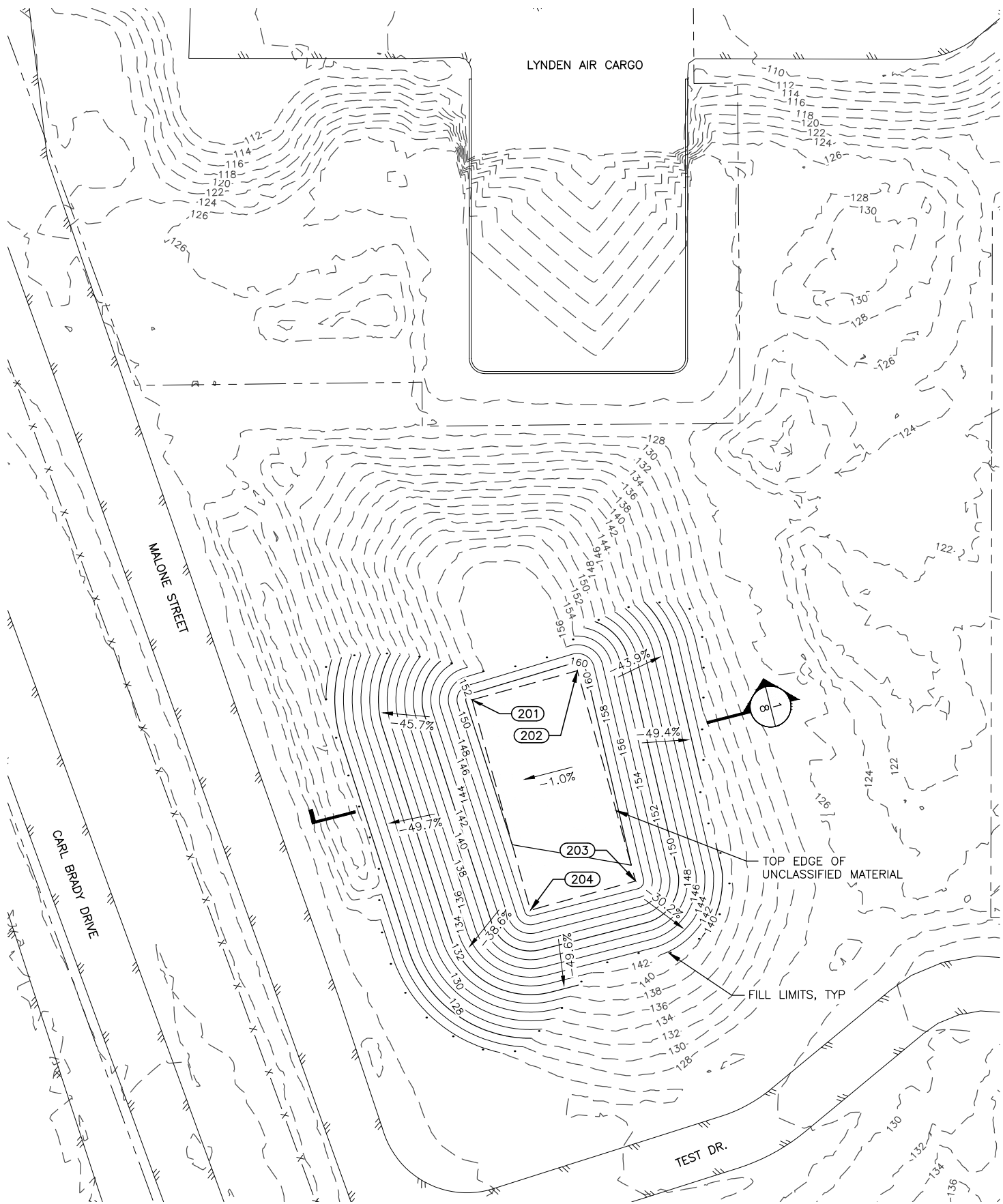
STATE OF ALASKA
DEPARTMENT OF TRANSPORTATION
AND PUBLIC FACILITIES
CENTRAL REGION
4111 AVIATION AVE., ANCHORAGE ALASKA 99502
PHONE (907) 269-0590

TED STEVENS ANCHORAGE
ANCHORAGE, ALASKA
ANC KULIS RAMP TEMPORARY REPAIR
PROJECT No. CSAPT01323
GRADING PLAN

DATE:
APRIL 2025
SHEET:
7 OF 11

GRADING POINTS				
POINT#	STATION	OFFSET	ELEV.	DESCRIPTION
101	100+48.46	62.12 LT	108.94	EOP, ME
102	102+39.41	62.60 LT	107.72	EOP, ME
103	102+38.89	328.33 LT	106.46	EOP, ME
104	108+68.53	329.25 LT	103.28	EOP, ME
105	108+73.55	159.39 LT	104.07	EOP, ME
106	108+87.11	163.35 LT	103.48	EOP, ME
107	108+93.27	107.07 LT	103.86	EOP, ME
108	109+08.43	81.24 LT	103.69	EOP, ME
109	111+92.65	76.74 LT	100.94	EOP, ME
110	112+81.15	77.64 RT	99.50	EOP, ME
111	111+55.61	77.35 RT	104.02	EOP, ME
112	111+72.20	110.68 RT	104.64	EOP, ME
113	111+84.22	104.85 RT	104.41	EOP, ME
114	111+95.58	103.09 RT	104.34	EOP, ME
115	112+08.44	104.04 RT	104.42	EOP, ME
116	112+36.52	110.16 RT	104.71	EOP, ME
117	113+15.68	253.66 RT	106.20	EOP, ME
118	111+84.90	325.66 RT	107.55	EOP, EOC, ME
119	111+75.12	307.90 RT	107.50	EOP, EOC, ME
120	111+23.78	336.16 RT	108.26	EOP, EOC, ME
121	109+93.19	94.45 RT	105.66	EOP, ME
122	109+85.01	81.21 RT	105.38	EOP, ME
123	109+69.78	63.58 RT	105.34	EOP, ME
124	109+58.24	55.31 RT	105.32	EOP, ME
125	109+44.07	47.85 RT	104.92	EOP, ME
126	106+04.37	64.73 RT	106.49	EOP, ME
127	104+82.69	65.04 RT	106.87	EOP, ME
128	104+20.12	65.20 RT	106.94	EOP, ME
129	103+29.37	65.43 RT	106.80	EOP, ME
130	103+29.37	51.20 RT	107.13	EOP, ME
131	100+48.47	51.91 RT	109.16	EOP, ME

4/1/2025 1:33 PM
8
Date Revised: 4/1/2025 1:33 PM
Layout Name: 8
File Path and Name: \\cwgeng.com\Projects\JobsData\30209.16 ANC Kulis Ramp Temporary Repair\00 CADD\01 Working Set\01 Civil\01323-ANC-PFAS Disposal Plan.dwg
Designed By: KY
Drawn By: EH
Checked By: MH

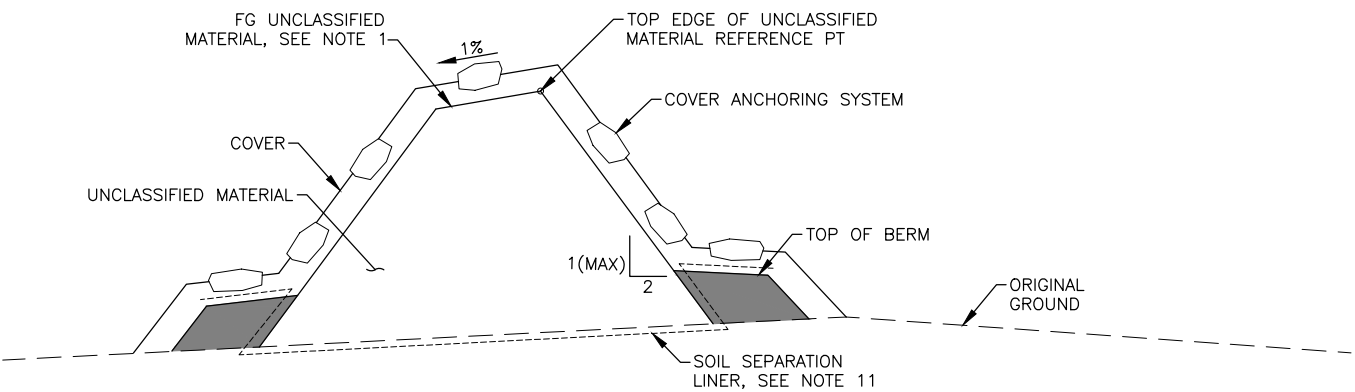


UNCLASSIFIED MATERIAL DISPOSAL AREA NOTES:

1. ALL ELEVATIONS SHOWN ARE FINISHED GRADE. ELEVATIONS OF THE CONTAMINATED MATERIAL WILL VARY BASED ON FINAL STORAGE VOLUME. CONSTRUCT INTERIM AND FINAL GRADES AS DIRECTED BY THE ENGINEER. FINAL SLOPES SHALL BE NO STEEPER THAN 2:1, AND NO LESS THAN 1%.
2. IMPLEMENT SPECIAL HAULING AND DECONTAMINATION PROCEDURES SPECIFIED UNDER ITEM P171.
3. BASIS OF ESTIMATE FOR DISPOSAL AREAS:
 - PFAS CONTAMINATED MATERIAL: 4710 CY
4. OTHER CONTRACTORS OR UTILITY COMPANIES MAY BE WORKING IN THE DISPOSAL SITE AREA OR IN THE VICINITY. CONTRACTOR SHALL COORDINATE THEIR WORK WITH ALL OTHER CONTRACTORS OR UTILITY COMPANIES WORKING AT OR NEAR THE AIRPORT AS REQUIRED PER GCP 50-07.
5. STOCKPILE AREAS SHALL BE STABILIZED PRIOR TO OCTOBER 15TH OF EACH SEASON.
6. INSTALL SOIL SEPARATION LINER UNDER THE UNCLASSIFIED MATERIAL DISPOSAL FOOTPRINT. EXTEND LINER UP AND OVER CONSTRUCTED BERM TO SEPARATE CLEAN MATERIAL FROM UNCLASSIFIED MATERIAL.

GRADING POINTS				
POINT #	NORTHING	EASTING	ELEVATION	DESCRIPTION
201	319896.3156	332050.5515	161.45'	PI PFAS TOP
202	319909.6832	332098.7315	161.95'	PI PFAS TOP
203	319813.3233	332125.4667	159.84'	PI PFAS TOP
204	319799.9557	332077.2868	159.34'	PI PFAS TOP

LEGEND:
[Shaded Box] CLEAN BERM MATERIAL



1
8

UNCLASSIFIED MATERIAL DISPOSAL AREA SECTION
SCALE: NTS



PLANS DEVELOPED BY:
CRW ENGINEERING GROUP
3940 ARCTIC BLVD. SUITE 300
ANCHORAGE, ALASKA 99503
(907) 562-3252
#AECL882-AK

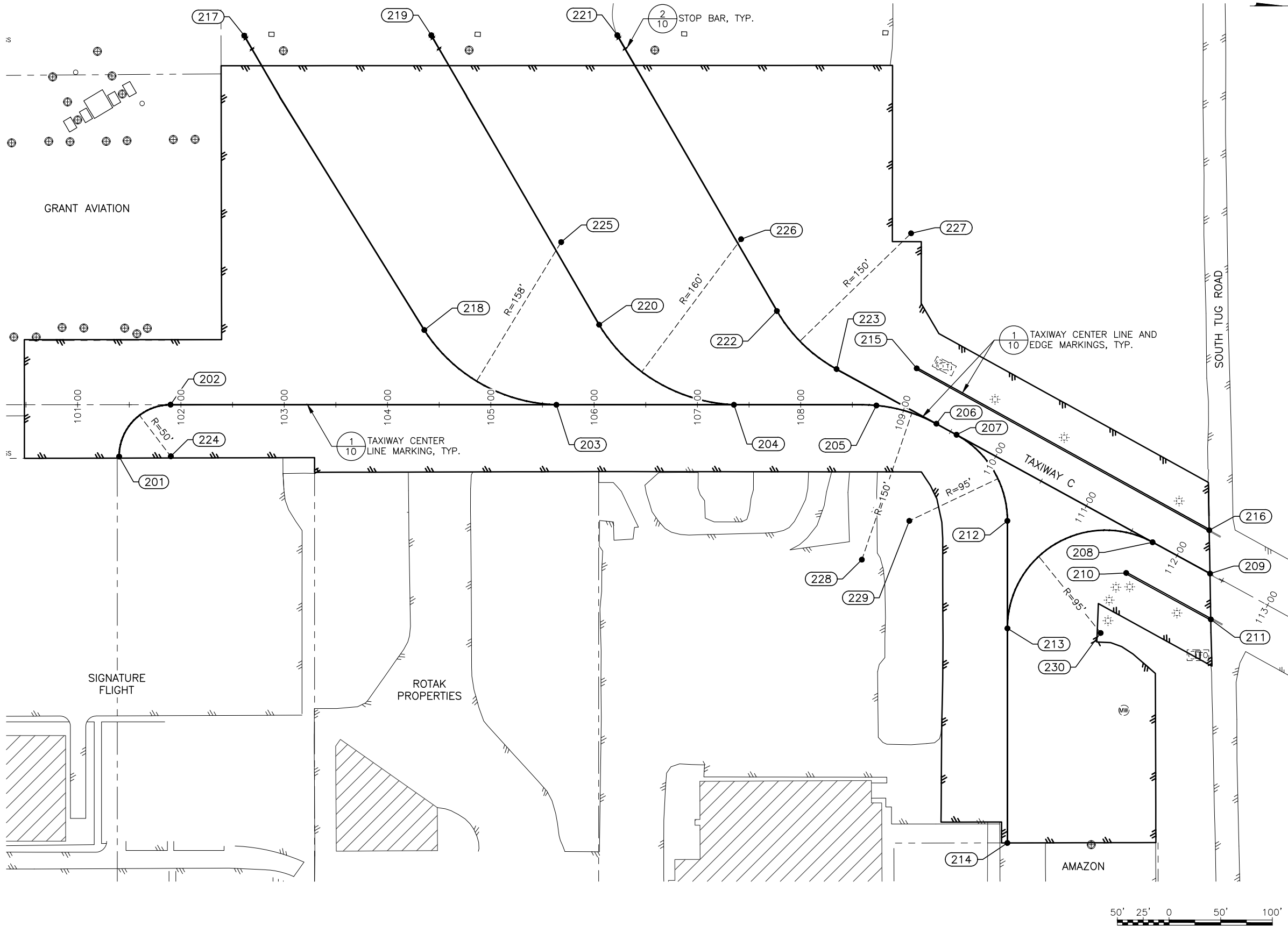
BY	DATE	REVISION

STATE OF ALASKA
DEPARTMENT OF TRANSPORTATION
AND PUBLIC FACILITIES
CENTRAL REGION
4111 AVIATION AVE., ANCHORAGE ALASKA 99502
PHONE (907) 269-0590

TED STEVENS ANCHORAGE
ANCHORAGE, ALASKA
ANC KULIS RAMP TEMPORARY REPAIR
PROJECT No. CSAPT01323
UNCLASSIFIED DISPOSAL AREA GRADING PLAN

DATE:
APRIL 2025
SHEET:
8 OF 11

4/1/2025 1:43 PM
9
Date Revised: KY
Layout Name: EH
File Path and Name: \\craweng.com\Projects\JobsData\30209.16 ANC Kulis Ramp Temporary Repair\00 CAD\01 Working Set\01 Civil\01323-ANC-Pavement Marking Planning
Checked By: MH



MARKING POINT TABLE			
POINT #	STATION	OFFSET	DESCRIPTION
201	101+40.19	50.11 RT	PC, TW CL
202	101+89.95	0.01 LT	PT, TW CL
203	105+63.45	0.00 CL	PT, TW CL
204	107+35.34	0.00 CL	PT, TW CL
205	108+73.30	0.00 CL	PC, TW CL
206	109+34.44	0.00 CL	PT, TW CL
207	109+56.62	0.00 CL	PC, TW CL
208	111+73.17	0.00 CL	PT, TW CL
209	112+36.43	0.00 CL	ME, TW CL
210	111+65.09	38.38 RT	END TW EDGE
211	112+58.37	38.47 RT	ME, TW EDGE
212	110+39.93	49.35 RT	PT, TW CL
213	110+89.90	140.72 RT	PC, TW CL
214	111+89.84	322.94 RT	ME, TW CL
215	109+01.13	42.64 LT	END, TW EDGE
216	112+15.61	36.49 LT	ME, TW EDGE
217	102+61.38	357.46 LT	STOP BAR
218	104+35.56	72.27 LT	PC, TW CL
219	104+42.44	357.80 LT	STOP BAR
220	106+04.83	77.45 LT	PC, TW CL
221	106+22.53	357.79 LT	STOP BAR
222	107+76.98	90.87 LT	PC, TW CL
223	108+34.71	34.49 LT	PT, TW CL
224	101+90.19	49.99 RT	RP, R=50'
225	105+68.06	157.45 LT	RP, R=158'
226	107+42.23	160.30 LT	RP, R=160'
227	108+81.64	169.59 LT	RP, R=150'
228	108+96.84	149.97 RT	RP, R=150'
229	109+56.62	95.00 RT	RP, R=50'
230	111+71.26	101.19 RT	RP, R=95'

NOTES:

1. PROPOSED PAVEMENT MARKING LAYOUT SHALL BE MARKED PRIOR TO INSTALLATION FOR REVIEW AND APPROVAL BY ANC OPERATIONS THROUGH THE ENGINEER.



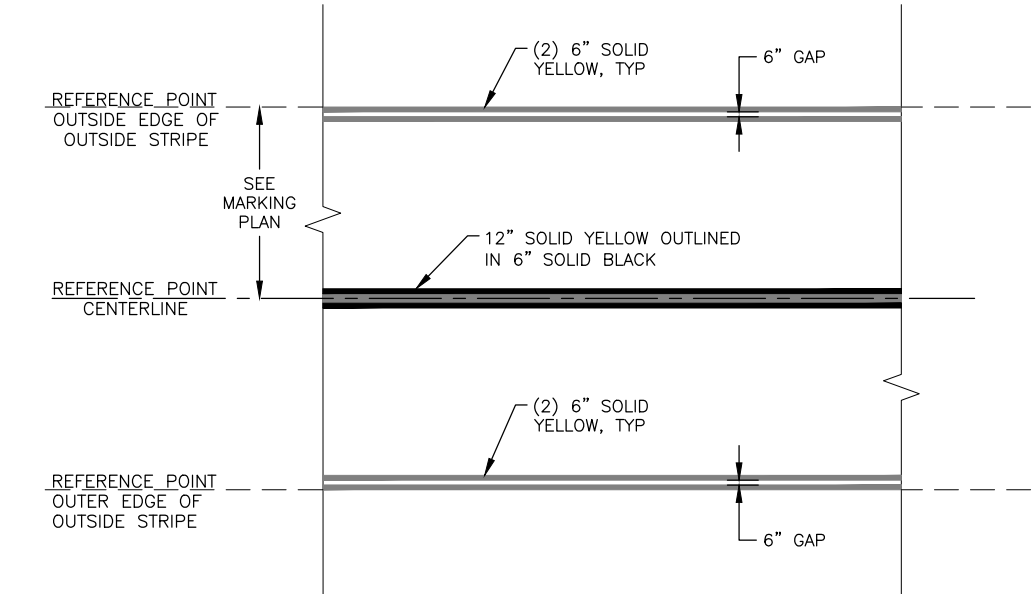
PLANS DEVELOPED BY:
CRW ENGINEERING GROUP
3940 ARCTIC BLVD. SUITE 300
ANCHORAGE, ALASKA 99503
(907) 562-3252
#AECL882-AK

BY DATE REVISION

STATE OF ALASKA
DEPARTMENT OF TRANSPORTATION
AND PUBLIC FACILITIES
CENTRAL REGION
4111 AVIATION AVE., ANCHORAGE ALASKA 99502
PHONE (907) 269-0590

TED STEVENS ANCHORAGE
ANCHORAGE, ALASKA
ANC KULIS RAMP TEMPORARY REPAIR
PROJECT No. CSAPT01323
PAVEMENT MARKING PLAN

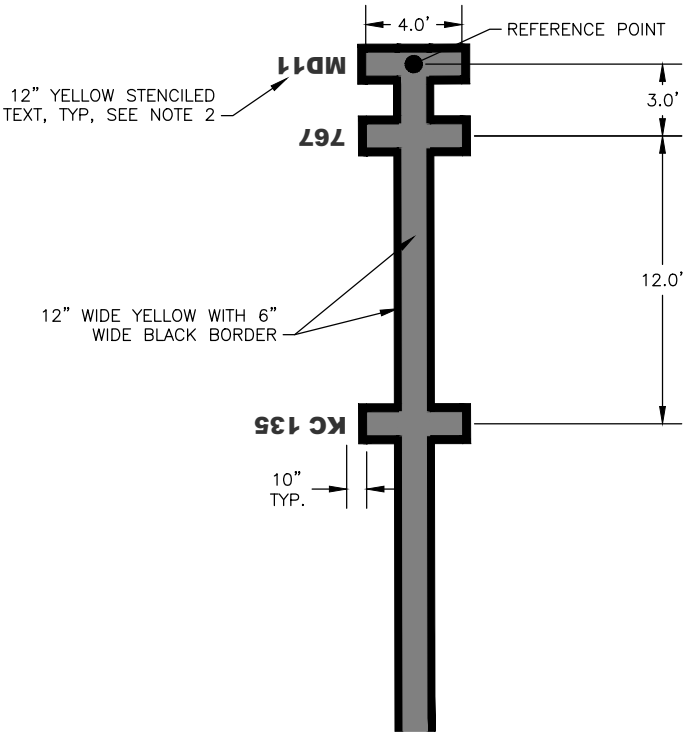
DATE:
APRIL 2025
SHEET:
9 OF 11



1
10

TAXIWAY CENTERLINE AND EDGE MARKINGS

SCALE: NTS



2
10

STOP BAR MARKINGS

SCALE: NTS

NOTES:

- ALL YELLOW PAINT SHALL BE EMBEDDED WITH GLASS BEADS.
- INSTALL AIRCRAFT DESIGNATION IDENTIFIER TEXT IN ACCORDANCE WITH FAA STANDARD LETTERS & NUMBERS (AC 150-5340-1M).
- DIMENSIONS FOR STOP BAR MARKINGS REFERENCE CENTER OF STRIPE.



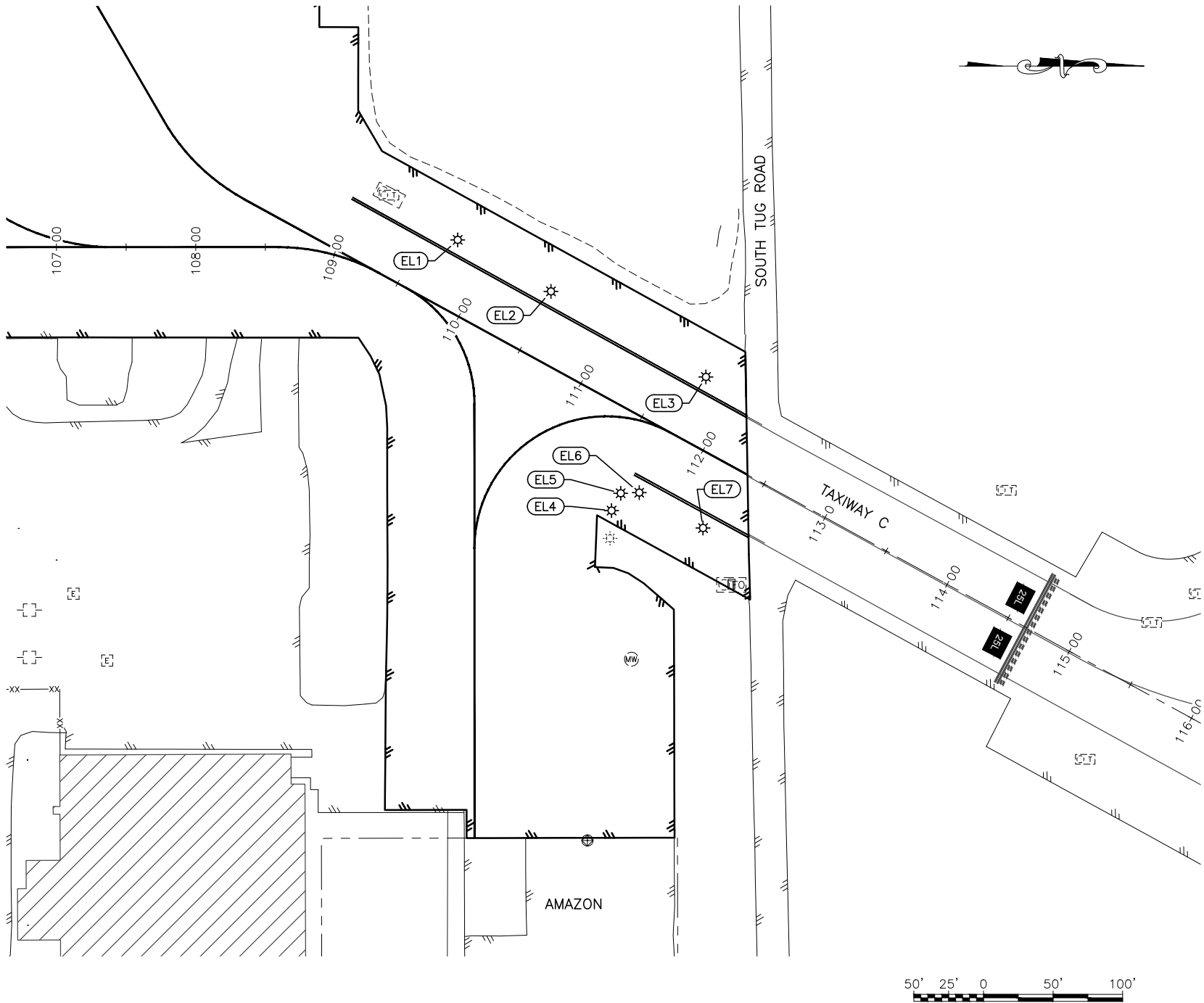
PLANS DEVELOPED BY:
CRW ENGINEERING GROUP
3940 ARCTIC BLVD. SUITE 300
ANCHORAGE, ALASKA 99503
(907) 562-3252
#AECL882-AK

BY	DATE	REVISION

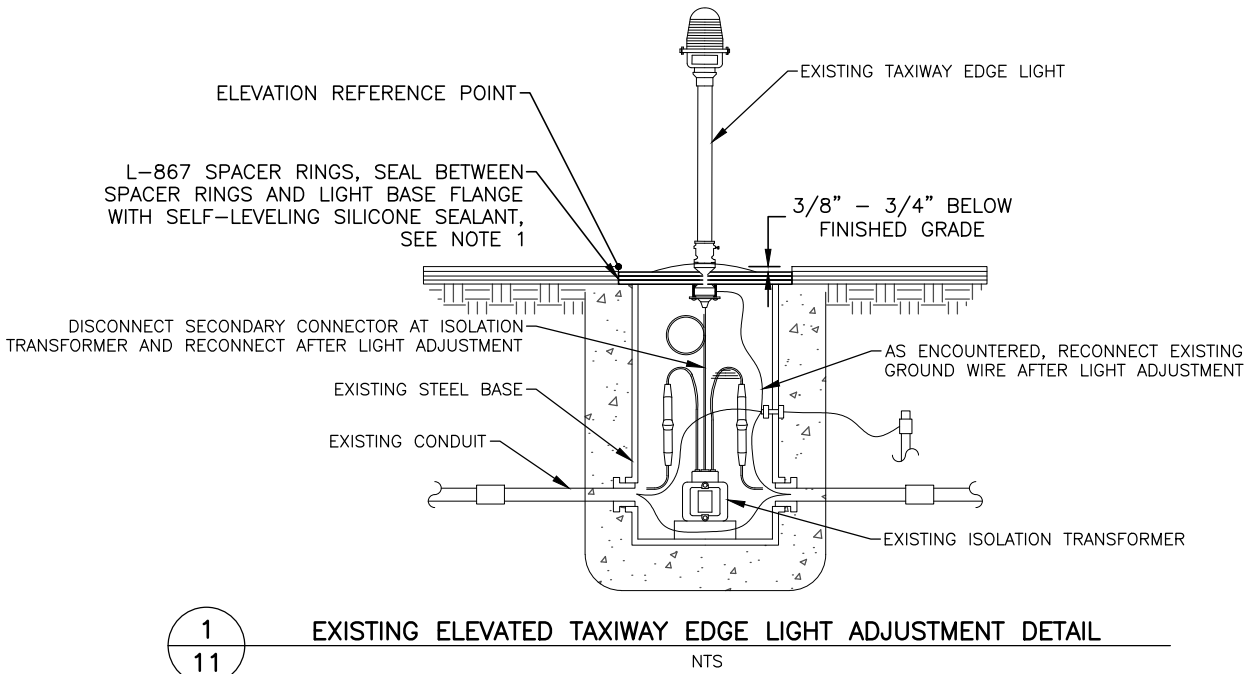
STATE OF ALASKA
DEPARTMENT OF TRANSPORTATION
AND PUBLIC FACILITIES
CENTRAL REGION
4111 AVIATION AVE., ANCHORAGE ALASKA 99502
PHONE (907) 269-0590

TED STEVENS ANCHORAGE
ANCHORAGE, ALASKA
ANC KULIS RAMP TEMPORARY REPAIR
PROJECT No. CSAPT01323
PAVEMENT MARKING DETAILS

DATE:
APRIL 2025
SHEET:
10 OF 11



TAXIWAY EDGE LIGHT ADJUSTMENT TABLE						
LIGHT	STATION	OFFSET	EXISTING GRADE ELEV. (FT)	FINISHED GRADE ELEV. (FT)	ADJUSTMENT (INCHES)	DESCRIPTION
EL1	109+72.84	47.99 LT	103.94	103.94	0.0	NO ADJUSTMENT
EL2	110+49.36	47.77 LT	103.36	103.36	0.0	NO ADJUSTMENT
EL3	111+76.48	47.32 LT	101.60	101.60	0.0	NO ADJUSTMENT
EL4	111+63.17	69.38 RT	103.37	103.37	0.0	NO ADJUSTMENT
EL5	111+62.94	55.34 RT	102.62	102.62	0.0	NO ADJUSTMENT
EL6	111+74.42	48.54 RT	101.98	101.98	0.0	NO ADJUSTMENT
EL7	112+26.77	48.85 RT	100.89	100.89	0.0	NO ADJUSTMENT



NOTES:

- ADJUST EDGE LIGHTS WITH MIN. TWO (2) 1/2" SPACER RINGS AS REQUIRED TO MEET FINISHED GRADE. IF REQUIRED, SPACER RINGS MAY BE REMOVED OR REPLACED WITH THINNER SPACER RINGS TO MEET THE SPECIFIED ELEVATION.
- ADJUSTMENTS SHOWN IN THE TAXIWAY EDGE LIGHT ADJUSTMENT TABLE ARE BASED ON THE DIFFERENCE BETWEEN EXISTING ELEVATION AND FINISHED GRADE ELEVATION. CONTRACTOR TO ADJUST LIGHTS TO MEET THE DIMENSIONS SHOWN ON DETAIL 1.



PLANS DEVELOPED BY:
CRW ENGINEERING GROUP
3940 ARCTIC BLVD. SUITE 300
ANCHORAGE, ALASKA 99503
(907) 562-3252
#AECL882-AK

BY	DATE	REVISION

STATE OF ALASKA
DEPARTMENT OF TRANSPORTATION
AND PUBLIC FACILITIES
CENTRAL REGION
4111 AVIATION AVE., ANCHORAGE ALASKA 99502
PHONE (907) 269-0590

TED STEVENS ANCHORAGE
ANCHORAGE, ALASKA
ANC KULIS RAMP TEMPORARY REPAIR
PROJECT No. CSAPT01323
TAXIWAY C LIGHTING PLAN & DETAIL

DATE:	APRIL 2025
SHEET:	11 OF 11

Date Revised: 4/1/2025 1:43 PM
Layout Name: AC1
File Path and Name: \\csweng.com\Projects\JobsData\30209.16 ANC Kulis Ramp Temporary Repair\00 CAD\01 Working Set\01 Civil\01323-ANC-CSPP Overview.dwg

Designed By: KY
Drawn By: EH
Checked By: MH

GENERAL SAFETY REQUIREMENTS

1. SEE APPENDIX C OF THE SPECIFICATIONS FOR THE CONSTRUCTION SAFETY AND PHASING PLAN (CSPP) REQUIREMENTS. THE CONTRACTOR SHALL COMPLY WITH THE SAFETY REQUIREMENTS AS REQUIRED IN THE CSPP. ALL SAFETY RELATED WORK SHALL BE SUBSIDIARY TO THE CONTRACT AND NO ADDITIONAL PAYMENT WILL BE MADE.

2. THE CONTRACTOR SHALL SUBMIT A SAFETY PLAN COMPLIANCE DOCUMENT PER FAA AC 150/5370-2G TO THE ENGINEER FOR REVIEW AND APPROVAL PRIOR TO ISSUANCE OF A NOTICE TO PROCEED. IF THE CONSTRUCTION PHASING PLAN DIFFERS FROM WHAT IS SHOWN OR IF SUBSEQUENT CHANGES ARE MADE, SUBMIT A REVISION TO THE ENGINEER FOR REVIEW AND APPROVAL.

3. CONSTRUCTION SHALL BE PLANNED TO MINIMIZE DISTURBANCE TO AIRCRAFT OPERATIONS. COORDINATE RUNWAY AND TAXIWAY CLOSURES (PARTIAL OR FULL) WITH AIRPORT OPERATIONS AND THE ENGINEER.

4. ALL CONSTRUCTION VEHICLES AND EQUIPMENT SHALL OPERATE A FLASHING AMBER BEACON WHEN WORKING ON THE AIRPORT.

5. CLEAR SAFETY AREAS AND OBJECT FREE AREAS AT ANYTIME AS DIRECTED BY THE ENGINEER.

6. CONSTRUCTION ACTIVITIES THAT REQUIRE WORK IN AN ACTIVE TOFA ARE SUBJECT TO THE FOLLOWING RESTRICTIONS:

A. NOTAMS HAVE BEEN ISSUED ADVISING TAXIING PILOTS OF HAZARD AND RECOMMENDING REDUCED TAXIING SPEEDS ON THE TAXIWAY OF 10 MPH OR LESS.

B. INSTALL MARKINGS PER THIS CSPP AND THE PROVISIONS OF SECTIONS 2.18 AND 2.20 OF AC 150/5370-2G PRIOR TO THE COMMENCEMENT OF WORK IN THE AREA.

C. MAINTAIN FIVE FOOT CLEARANCE BETWEEN EQUIPMENT AND MATERIALS AND ANY PART OF AN AIRCRAFT. IF SUCH CLEARANCE CAN NOT BE MAINTAINED WHEN THE AIRCRAFT HAS FULL USE OF THE ENTIRE TAXIWAY WIDTH, THEN IT WILL BE NECESSARY TO MOVE PERSONNEL AND EQUIPMENT FOR THE PASSAGE OF THAT AIRCRAFT.

D. FLAGGERS FURNISHED BY THE CONTRACTOR MUST BE USED TO DIRECT AND CONTROL CONSTRUCTION EQUIPMENT AND PERSONNEL TO A PRE-ESTABLISHED SETBACK DISTANCE FOR SAFE PASSAGE OF AIRCRAFT.

E. AIRLINE PERSONNEL MUST BE USED TO DIRECT TAXIING AIRCRAFT WHEN WORK IS OCCURRING WITHIN THE ADJACENT TOFA.

F. REMOVE MATERIAL STOCKPILES AND EQUIPMENT FROM OBJECT FREE AREAS DURING NON-WORK HOURS.

7. DAMAGE TO FAA FACILITIES INCLUDING POWER DISRUPTION SHALL BE IMMEDIATELY REPAIRED IN A MANNER ACCEPTABLE TO THE FAA AT THE CONTRACTOR'S EXPENSE.

8. PROVIDE AIRPORT FLAGGERS WHERE CONSTRUCTION ACTIVITY IS CONDUCTED IN CLOSE PROXIMITY TO OPERATING AIRCRAFT AND WHERE THE ENGINEER OR AIRPORT OPERATIONS DETERMINES A FLAGGER IS NECESSARY.

9. THE CONTRACTOR MUST REPORT SAFETY ISSUES TO THE ENGINEER AND AIRPORT OPERATIONS UPON DISCOVERY. THE CONTRACTOR MUST TAKE IMMEDIATE ACTION TO RESOLVE SAFETY ISSUES AS DIRECTED.

10. IMMEDIATELY REMOVE ALL FOREIGN OBJECTS AND DEBRIS (FOD) FROM ACTIVE SURFACES UPON DISCOVERY OR NOTIFICATION. FAILURE TO REMOVE FOD MAY BE CONSIDERED A SAFETY VIOLATION AS DETERMINED BY THE ENGINEER. STATION ADEQUATE CLEANING EQUIPMENT AT THE JOB SITE FOR IMMEDIATE CLEANUP OF ANY MATERIAL SPILLS ON ALL ACTIVE RUNWAY, TAXIWAY, APRON SURFACES, AND TUG ROADS.

11. OTHER CONTRACTORS OR UTILITY COMPANIES MAY BE WORKING IN THE SAME PROJECT AREA OR IN THE VICINITY DURING THE PROGRESS OF THIS CONTRACT'S WORK. CONTRACTOR SHALL COORDINATE THEIR WORK WITH ALL OTHER CONTRACTORS OR UTILITY COMPANIES WORKING AT OR NEAR THE AIRPORT.

12. CONTRACTOR TO SURVEY EXISTING STAGING AREAS PRIOR TO CONSTRUCTION AND RETURN STAGING AREAS TO EXISTING ELEVATIONS ONCE CONSTRUCTION IS COMPLETE. STAGING AREAS ARE IN SNOW DISPOSAL SITES, SNOW PILES MAY BE PRESENT. CONTRACTOR SHALL VACATE THE STAGING AREAS BY OCTOBER 15

LEGEND

- STAGING AREA

UNCLASSIFIED DISPOSAL AREA

AIRPORT FLAGGER

ACCESS GATE

PROPOSED HAUL ROUTE
- 1
AC1
-
- HAUL ROUTE NOTES
1. SUBMIT A TRAFFIC CONTROL PLAN TO THE ENGINEER FOR APPROVAL FROM ANC AIRPORT OPERATIONS AND ANC ENGINEERING PRIOR TO BEGINNING HAUL OPERATIONS.

2. THE HAUL ROUTE IS TO BE USED BY THE CONTRACTOR TO ACCESS THE PROJECT AND STAGING AREA ON ANC PROPERTY. FOLLOWING CONSTRUCTION COMPLETION, THE CONTRACTOR IS REQUIRED TO RESTORE THE HAUL ROUTE TO ITS ORIGINAL CONDITION. TEMPORARY ACCESS ROUTES MUST BE REMOVED AND THE GROUND RESTORED TO ITS ORIGINAL CONDITION, INCLUDING ALL STRIPING.

3. HAUL ROUTES SHALL BE SWEEPED AND KEPT CLEAR OF DEBRIS AT ALL TIMES AND AS DIRECTED BY THE ENGINEER.

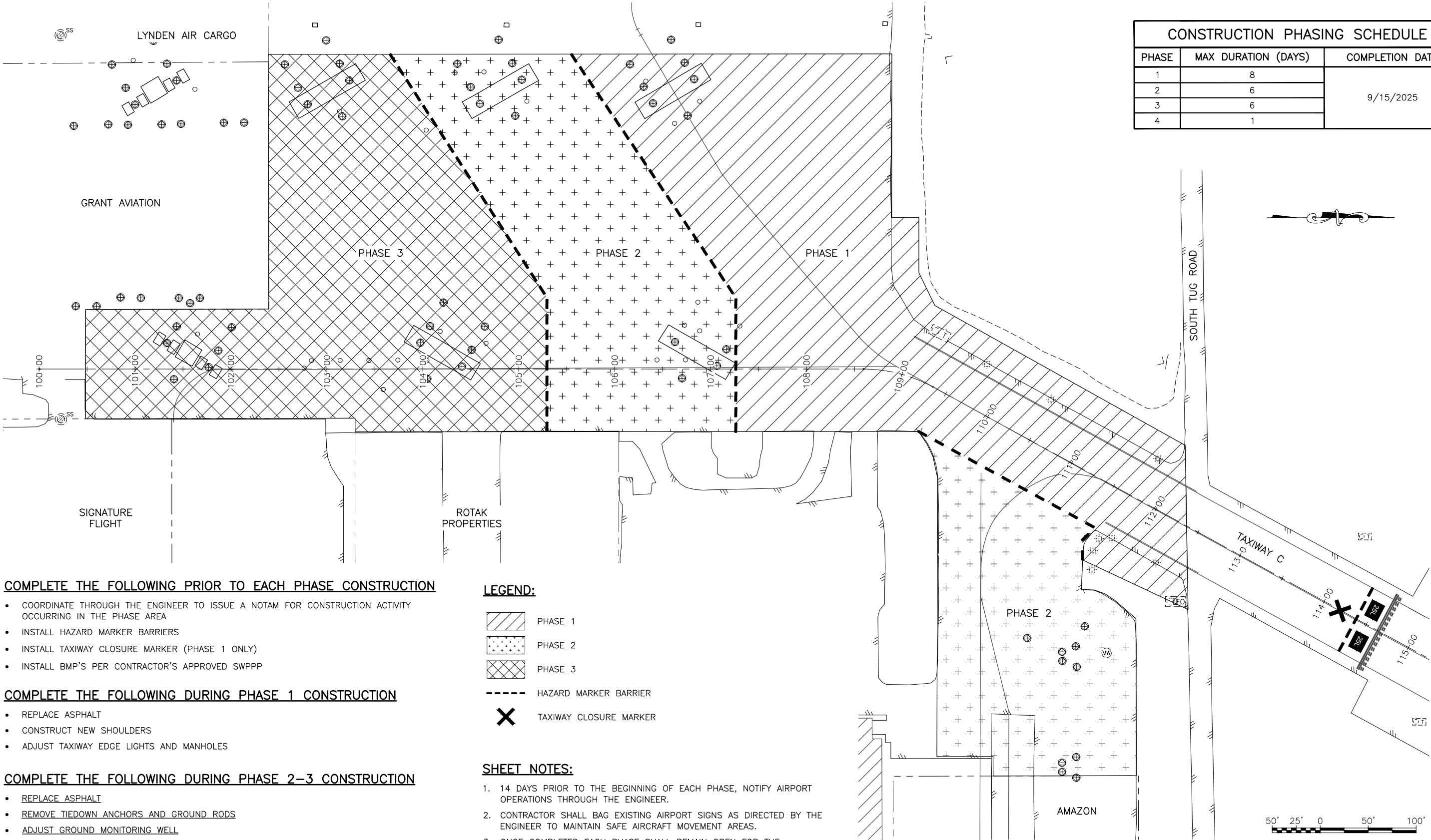
4. UNCOVERED STOCKPILED MATERIAL WILL NOT BE PERMITTED WITHIN THE PROJECT LIMITS.

5. STOCKPILE ALL EXCAVATED MATERIALS REMOVED AND NOT REUSED DURING CONSTRUCTION ON THE AIRPORT AS SHOWN.

6. ONLY SOIL AND RAP IS TO BE DISPOSED OF IN DISPOSAL AREAS. OTHER MATERIALS SHALL BE DISPOSED OF OFF SITE BY THE CONTRACTOR.
-
- CSPP HAUL ROUTE
- PLANS DEVELOPED BY:
CRW ENGINEERING GROUP
3940 ARCTIC BLVD. SUITE 300
ANCHORAGE, ALASKA 99503
(907) 562-3252
#AECL882-AK
- | BY | DATE | REVISION |
|----|------|----------|
|----|------|----------|
- STATE OF ALASKA
DEPARTMENT OF TRANSPORTATION
AND PUBLIC FACILITIES
CENTRAL REGION
4111 AVIATION AVE., ANCHORAGE ALASKA 99502
PHONE (907) 269-0590
- TED STEVENS ANCHORAGE
ANCHORAGE, ALASKA
ANC KULIS RAMP TEMPORARY REPAIR
PROJECT No. CFAPT01136
CSPP HAUL ROUTE
- DATE:
APRIL 2025
SHEET:
AC1 OF AC3

Date Reviset: 4/1/2025 1:44 PM
Layout Name: AC2
File Path and Name: \\craweng.com\Projects\JobsData\30209.16 ANC Kulis Ramp Temporary Repair\00 CAD\01 Working Set\01 Civil\01323-ANC-CSPP Phasing.dwg

Designed By: KY
Drawn By: EH
Checked By: MH



CONSTRUCTION PHASING SCHEDULE		
PHASE	MAX DURATION (DAYS)	COMPLETION DATE
1	8	9/15/2025
2	6	
3	6	
4	1	

COMPLETE THE FOLLOWING PRIOR TO EACH PHASE CONSTRUCTION

- COORDINATE THROUGH THE ENGINEER TO ISSUE A NOTAM FOR CONSTRUCTION ACTIVITY OCCURRING IN THE PHASE AREA
- INSTALL HAZARD MARKER BARRIERS
- INSTALL TAXIWAY CLOSURE MARKER (PHASE 1 ONLY)
- INSTALL BMP'S PER CONTRACTOR'S APPROVED SWPPP

COMPLETE THE FOLLOWING DURING PHASE 1 CONSTRUCTION

- REPLACE ASPHALT
- CONSTRUCT NEW SHOULDERS
- ADJUST TAXIWAY EDGE LIGHTS AND MANHOLES

COMPLETE THE FOLLOWING DURING PHASE 2-3 CONSTRUCTION

- REPLACE ASPHALT
- REMOVE TIEDOWN ANCHORS AND GROUND RODS
- ADJUST GROUND MONITORING WELL

COMPLETE THE FOLLOWING DURING PHASE 4 CONSTRUCTION

- INSTALL PAVEMENT MARKINGS

COMPLETE THE FOLLOWING AFTER EACH PHASE CONSTRUCTION

- REMOVE HAZARD MARKER BARRIERS
- REMOVE TAXIWAY CLOSURE MARKER (PHASE 1 ONLY)
- REMOVE BMP'S

LEGEND:

- PHASE 1
- PHASE 2
- PHASE 3
- HAZARD MARKER BARRIER
- TAXIWAY CLOSURE MARKER

SHEET NOTES:

- 14 DAYS PRIOR TO THE BEGINNING OF EACH PHASE, NOTIFY AIRPORT OPERATIONS THROUGH THE ENGINEER.
- CONTRACTOR SHALL BAG EXISTING AIRPORT SIGNS AS DIRECTED BY THE ENGINEER TO MAINTAIN SAFE AIRCRAFT MOVEMENT AREAS.
- ONCE COMPLETED EACH PHASE SHALL REMAIN OPEN FOR THE DURATION OF THE PROJECT.

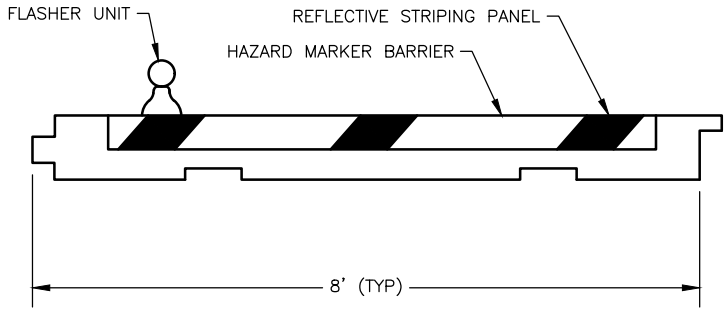
PLANS DEVELOPED BY:
CRW ENGINEERING GROUP
3940 ARCTIC BLVD. SUITE 300
ANCHORAGE, ALASKA 99503
(907) 562-3252
#AECL882-AK

BY DATE REVISION

STATE OF ALASKA
DEPARTMENT OF TRANSPORTATION
AND PUBLIC FACILITIES
CENTRAL REGION
4111 AVIATION AVE., ANCHORAGE ALASKA 99502
PHONE (907) 269-0590

TED STEVENS ANCHORAGE
ANCHORAGE, ALASKA
ANC KULIS RAMP TEMPORARY REPAIR
PROJECT No. CSAPT01323
CSPP PHASING

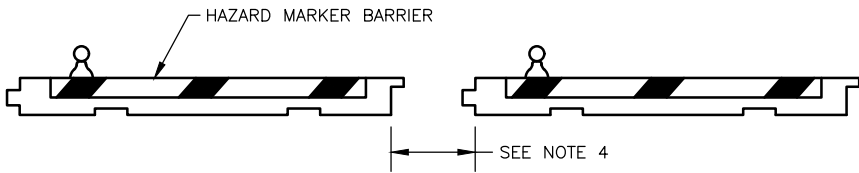
DATE:
APRIL 2025
SHEET:
AC2 OF AC3



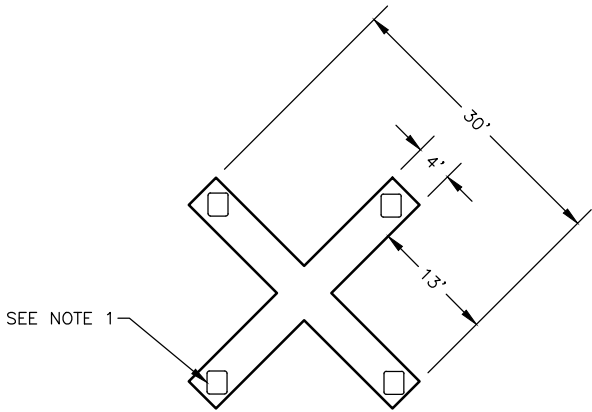
1
AC3 AVIATION HAZARD MARKER BARRICADE DETAIL
SCALE: NTS

HAZARD MARKER BARRIER NOTES:

1. FLASHER SHALL BE BATTERY POWERED LIGHTS, TYPE "A", OF LOW INTENSITY, FLASHING, CONFORMING TO PART VI OF THE MANUAL ON TRAFFIC CONTROL DEVICES, 2009 EDITION.
2. ATTACH FLASHER PER MANUFACTURER'S RECOMMENDATIONS.
3. PLACE BARRIERS TO SEPARATE CONSTRUCTION AREAS FROM OPEN PORTIONS OF THE AIRPORT.
4. ALL BARRIERS SHALL BE INTERLOCKED. DISTANCE BETWEEN BARRIERS MAY BE ADJUSTED IF APPROVED BY THE ENGINEER.



2
AC3 CONSTRUCTION CLOSURE HAZARD MARKER BARRIER DETAIL
SCALE: NTS



3
AC3 TAXIWAY CLOSURE MARKER DETAIL
SCALE: NTS

TAXIWAY CLOSURE MARKER NOTES:

1. INSTALL YELLOW SANDBAGS TO SECURE TAXIWAY CLOSURE MARKER TO SURFACE.