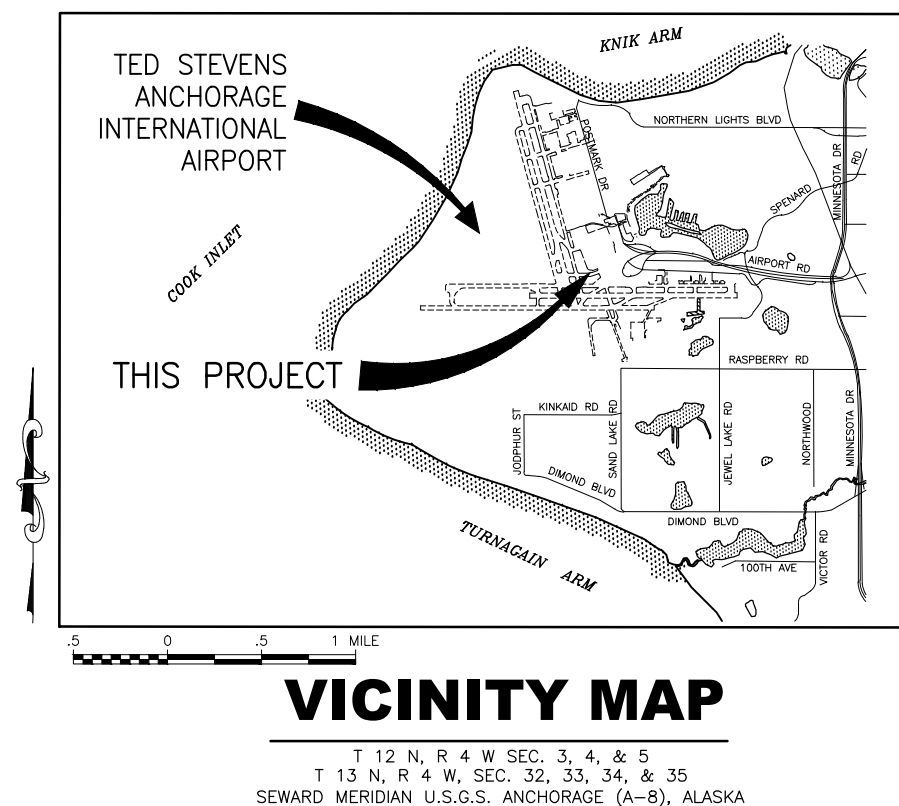




CONSTRUCTION PLANS
TED STEVENS
ANCHORAGE INTERNATIONAL AIRPORT
ANCHORAGE, ALASKA
ANC TAXILANE V GATE RECONSTRUCTION
PROJECT No. CFAPT01278
AIRPORT IMPROVEMENT PROGRAM
No. 3-02-0016-XXX-2025

PS&E REVIEW
FEBRUARY 2025



APPROVED	DATE
LUKE BOWLAND, P.E.	REGIONAL PRECONSTRUCTION ENGINEER
APPROVED	DATE
JENNIFER PEPIN, P.E	DEPUTY DIRECTOR, ENGINEERING & ENVIRONMENTAL
APPROVED	DATE
JENNIFER LOMBARDO, P.E.	PROJECT MANAGER
CONCUR	DATE
JOEL G. ST. AUBIN, P.E.	REGIONAL CONSTRUCTION ENGINEER

STANTEC CONSULTING SERVICES INC. 3900 C ST SUITE 902 ANCHORAGE, AK 99503-2245 (907) 276-4245 CERTIFICATION OF AUTHORIZATION #126386				STATE OF ALASKA DEPARTMENT OF TRANSPORTATION AND PUBLIC FACILITIES CENTRAL REGION 4111 AVIATION AVE., ANCHORAGE ALASKA 99502 PHONE (907) 269-0590	TED STEVENS ANCHORAGE ANCHORAGE, ALASKA ANC TAXILANE V GATE RECONSTRUCTION PROJECT No. CFAPT01278 AIP NUMBER 3-02-0016-XXX-2025 TITLE, SIGNATURES, LOCATION MAP AND VICINITY MAP	DATE:	02/07/2025
						SHEET:	1 OF 15
	BY	DATE	REVISION				

Date Reviset:
Layout Name:
File Path and Name:

2/10/2025, 12:33 PM
INDEX ABBREVIATIONS, LEGEND, AND ESTIMATED QUANTITIES
U:\202501718A\drawing\A\sheet\01278-Cover-index-Est. Quantities.dwg

Designed By: LEN
Drawn By: JAG
Checked By: EUG

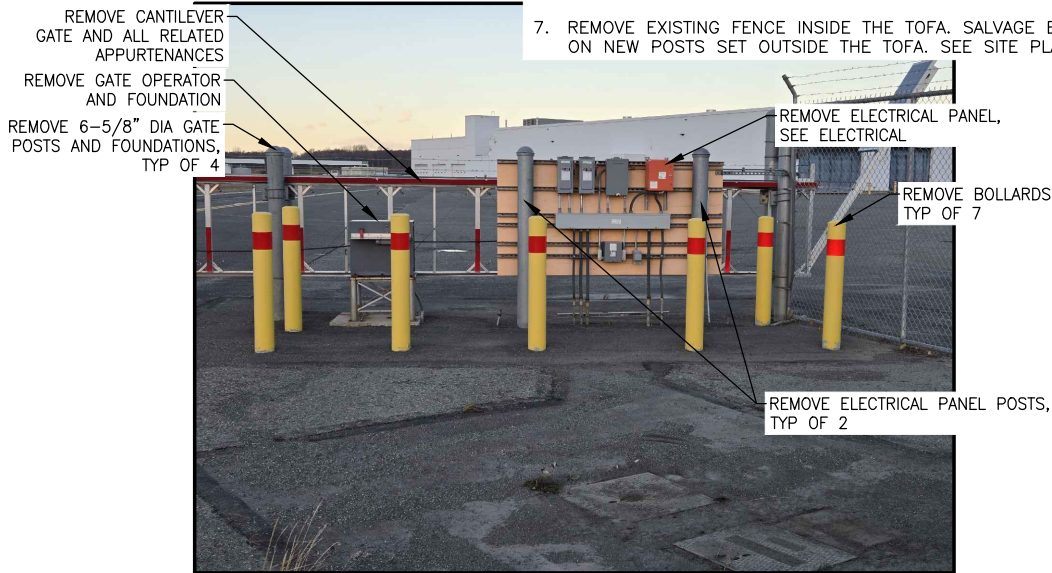
INDEX				LEGEND				ESTIMATED QUANTITIES								
SHEET TITLE		SHEET No.	DESCRIPTION	EXISTING	PROPOSED	No.	ITEM	UNIT	QUANTITY							
TITLE, SIGNATURES, LOCATION MAP, AND VICINITY MAP		1	AIRPORT PROPERTY BOUNDARY			F162.010.0008	8--FEET CHAIN--LINK FENCE	LF	43							
INDEX, ABBREVIATIONS, LEGEND, AND ESTIMATED QUANTITIES		2	BUILDING			F162.060.0120	DOUBLE CANTILEVER GATE, 120--FEET WIDE	EACH	1							
DEMOLITION PLAN		3	BOLLARD			F162.130.0000	RELOCATE CHAIN--LINK FENCE	LF	55							
SITE PLAN		4	TAXILANE CENTERLINE			F170.010.0000	STEEL BOLLARD	EACH	19							
DETAILS		5--9	CONCRETE			F171.010.0000	POWER GATE OPERATOR SYSTEM	EACH	1							
ELECTRICAL DEMOLITION PLAN		E1	CONTOUR LINE			F171.030.0000	CCTV CAMERA	EACH	1							
ELECTRICAL NEW WORK PLAN		E2	DEMOLITION			G100.010.0000	MOBILIZATION AND DEMOBILIZATION	LS	ALL REQ'D							
ELECTRICAL DETAILS		E3--E6	ELECTRICAL CONDUIT			G135.010.0000	CONSTRUCTION SURVEYING BY THE CONTRACTOR	LS	ALL REQ'D							
			ELECTRICAL TAXILANE CONDUIT			G135.020.0000	EXTRA THREE PERSON SURVEY PARTY	HR	10							
			ELECTRICAL MANHOLE			G150.030.0000	EQUIPMENT RENTAL, VAC--TRUCK	CS	ALL REQ'D							
			ELECTRICAL PANEL			G300.010.0000	CPM SCHEDULING	LS	ALL REQ'D							
			FENCE			G700.040.0000	TRAFFIC CONTROL FOR AIRPORTS	CS	ALL REQ'D							
			FUEL LINE			L125.500.0000	MISCELLANEOUS AIRPORT ELECTRICAL WORK	CS	ALL REQ'D							
			GATE			P152.010.0000	UNCLASSIFIED EXCAVATION	CY	120							
			GUARDRAIL			P160.010.0000	EXCAVATION OF PAVEMENT, AC	SY	65							
			HAUL ROUTE (TWO WAY)			P161.020.0000	RECYCLED ASPHALT PAVEMENT	CY	11							
			IDENTIFICATION BUBBLE			P165.010.0000	REMOVAL OF STRUCTURES	LS	ALL REQ'D							
			LIGHTS (TAXILANE)			P401.010.0030	HOT MIX ASPHALT TYPE II, CLASS A	TON	10							
			LIGHTS (LIGHT POLE)			P401.040.5834	ASPHALT BINDER, PG 58--34E	TON	1							
			PAINT STRIPE			P641.010.0000	EROSION, SEDIMENT, AND POLLUTION CONTROL ADMINISTRATION	LS	ALL REQ'D							
			PAVEMENT/SHOULDER (EDGE)			P641.020.0000	TEMPORARY EROSION, SEDIMENT, AND POLLUTION CONTROL	CS	ALL REQ'D							
			POINT NUMBER			P641.060.0000	WITHHOLDING	CS	ALL REQ'D							
			POST			P641.070.0000	SWPPP MANAGER	LS	ALL REQ'D							
			SIGN			P641.110.0000	SWPPPTRACK	CS	ALL REQ'D							
			STORM DRAIN LINE (UNDERGROUND)			P670.010.0000	HAZARD MARKER BARRIER, PLASTIC	EACH	20							
			STORM DRAIN MANHOLE			T901.020.0000	SEEDING	LB	13							
			TOFA (TAXIWAY/TAXILANE OBJECT FREE AREA)			T905.010.0020	TOPSOILING, CLASS B	SY	278							
			TSA (TAXIWAY/TAXILANE SAFETY AREA)													

Date Revised:	2/10/2025, 12:33 PM	Designed By:	LEN
Layout Name:	DEMO PLAN	Drawn By:	JAG
File Path and Name:	U:\2073017184.drawing\c\sheet\01278-Demo.dwg	Checked By:	EJG

FENCE DEMOLITION LOCATION TABLE		
POINT #	NORTHING	EASTING
600	326849.62	330182.18
601	326839.64	330175.54
602	326838.05	330161.76
603	326728.46	330199.89
604	326741.32	330146.56

DEMOLITION NOTES:

1. ALL WORK ASSOCIATED WITH THE DEMOLITION OF EXISTING GATE INFRASTRUCTURE IS PAID FOR UNDER ITEM P165.010.0000, EXCEPT PAVEMENT REMOVAL. PAVEMENT REMOVAL IS PAID FOR UNDER ITEM P160.010.0000.
2. NORTH SIDE DEMOLITION: SAWCUT AND REMOVE EXISTING ASPHALT PAVEMENT AS REQUIRED FOR BOLLARD, POSTS, AND FOUNDATION REMOVAL. REPAIR PAVEMENT PER DETAIL 2 ON SHEET 4.
3. SOUTH SIDE DEMOLITION: DEMOLITION OF OUTER MOST GATE POSTS MAY REQUIRE RELOCATING DITCH SLOPE ARMOR ROCK. REPLACE REMOVED ARMOR ROCK TO MATCH ADJACENT UNDISTURBED AREAS. DITCH SLOPE ARMOR ROCK RELOCATION WILL BE SUBSIDIARY TO ITEM P165.010.0000. SALVAGE METAL DECKING FOR REINSTALLATION ON NEW GATE POSTS.
4. AIRFIELD MAINTENANCE (AFM) WILL SALVAGE EXISTING SOLAR PANELS AND RELATED PARTS PRIOR TO THE GATE DEMOLITION.
5. SALVAGE EXISTING GATE SIGNS FOR REINSTALLATION ON NEW GATE.
6. SEE CONSTRUCTION PHASING NOTES AND CONSTRUCTION SEQUENCING TABLE ON SHEET AC1.
7. REMOVE EXISTING FENCE INSIDE THE TOFA. SALVAGE EXISTING FENCE FABRIC AND BARBED WIRE TO REINSTALL ON NEW POSTS SET OUTSIDE THE TOFA. SEE SITE PLAN, SHEET 4 FOR NEW FENCE ALIGNMENT.



DEMOLISH NORTH GATE INFRASTRUCTURE

SCALE: NTS



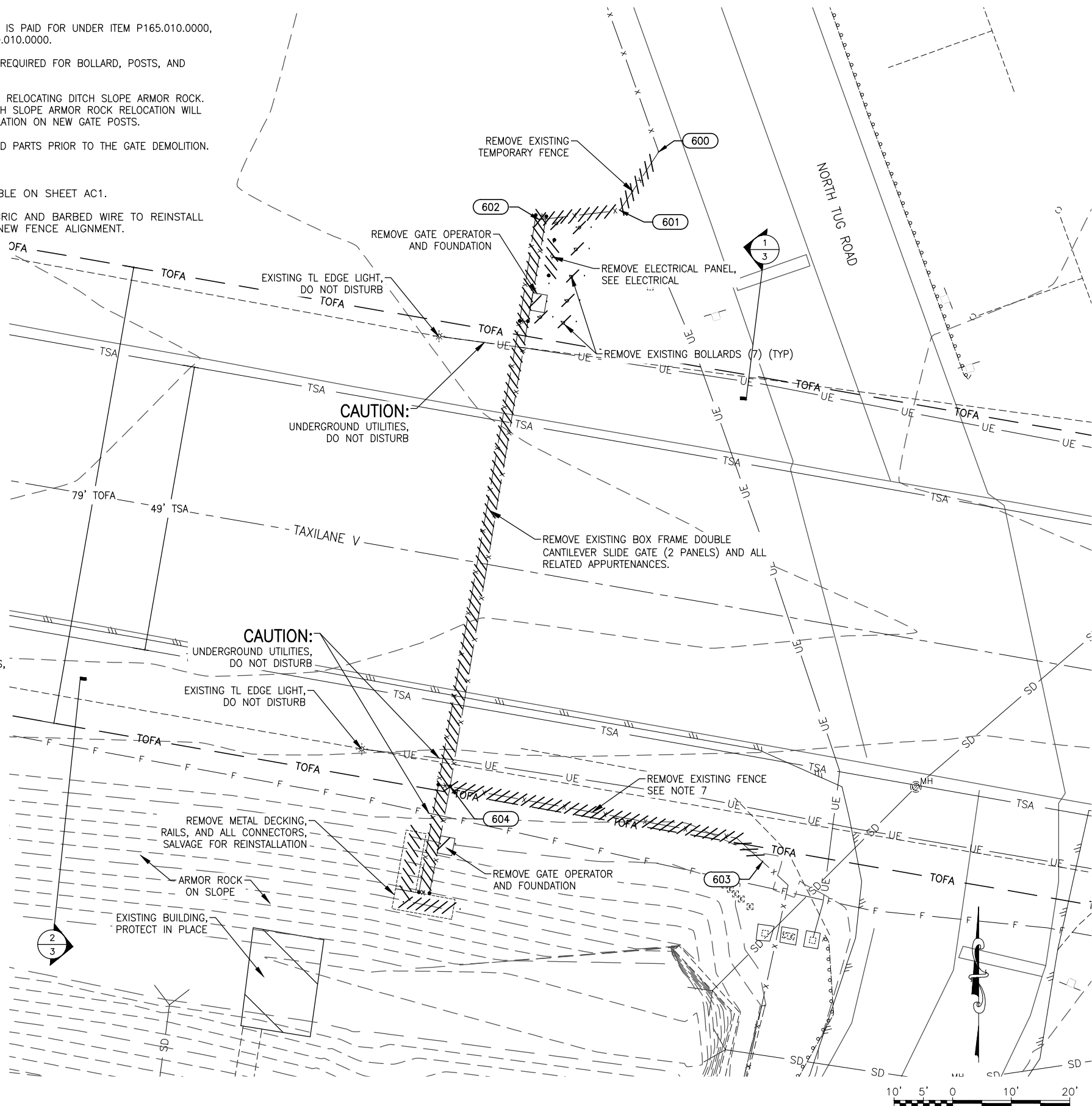
DEMOLISH SOUTH GATE INFRASTRUCTURE

SCALE: NTS

DEMOLITION SUMMARY		
STRUCTURE	QUANTITY	NOTES
BOLLARDS & FOUNDATIONS	7	
GATE OPERATORS & FOUNDATIONS	2	
GATE POSTS & FOUNDATIONS	8	
GATE PANELS	2	
METAL DECKING & ASSOCIATED PARTS	1	SALVAGE AND REINSTALL ON NEW GATE POSTS
GATE SIGNS	5	SALVAGE AND REINSTALL ON NEW GATE
SOLAR PANELS & ASSOCIATED PARTS	1	WILL BE SALVAGED BY AFM PRIOR TO GATE DEMOLITION BY CONTRACTOR
FENCING	2	TEMPORARY FENCE ON THE NORTH SIDE WILL BE DEMOLISHED. FENCE ON THE SOUTH SIDE WILL BE RELOCATED OUTSIDE THE TOFA. SEE NOTE 7.



STANTEC CONSULTING SERVICES INC.
3900 C ST SUITE 902
ANCHORAGE, AK 99503-2245
(907) 276-4245
CERTIFICATION OF AUTHORIZATION
#126386



**STATE OF ALASKA
DEPARTMENT OF TRANSPORTATION
AND PUBLIC FACILITIES
CENTRAL REGION
4111 AVIATION AVE., ANCHORAGE ALASKA 99502
PHONE (907) 269-0590**

TED STEVENS ANCHORAGE
ANCHORAGE, ALASKA
ANC TAXILANE V GATE RECONSTRUCTION
PROJECT No. CFAPT01278
AIP NUMBER 3-02-0016-XXX-2025
DEMOLITION PLAN

DATE:
02/07/2025

SHEET:
3 OF 15

2/10/2025, 12:33 PM
Date Revised: 2/10/2025, 12:33 PM
Layout Name: SUE PLAN
File Path and Name: L:\2023\01718A drawing\01278-SitePlan.dwg
Designed By: LEN
Drawn By: JAG
Checked By: EUG

FENCE LOCATION TABLE		
POINT #	NORTHING	EASTING
200	326849.62	330182.18
201	326839.03	330153.93
202	326728.46	330199.89
203	326741.44	330136.81

ADDITIONAL BOLLARDS		
POINT #	NORTHING	EASTING
400	326843.25	330150.43
401	326847.19	330151.12
402	326851.13	330151.81
403	326855.07	330152.51
404	326859.01	330153.20
405	326862.95	330153.89

ADDITIONAL BOLLARDS		
POINT #	NORTHING	EASTING
406	326866.89	330154.58
407	326870.83	330155.27
408	326874.77	330155.96
409	326878.71	330156.65
410	326880.91	330159.74

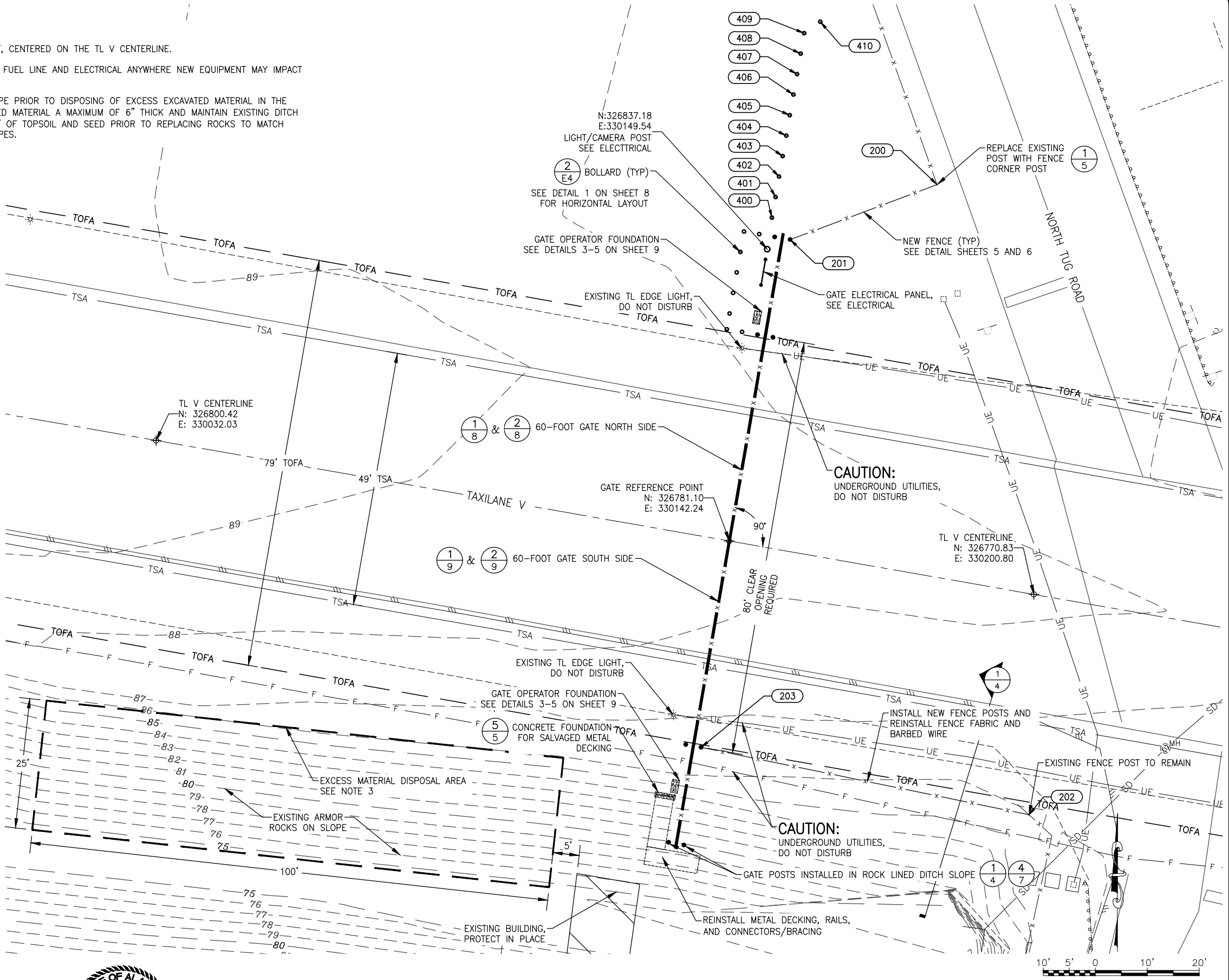
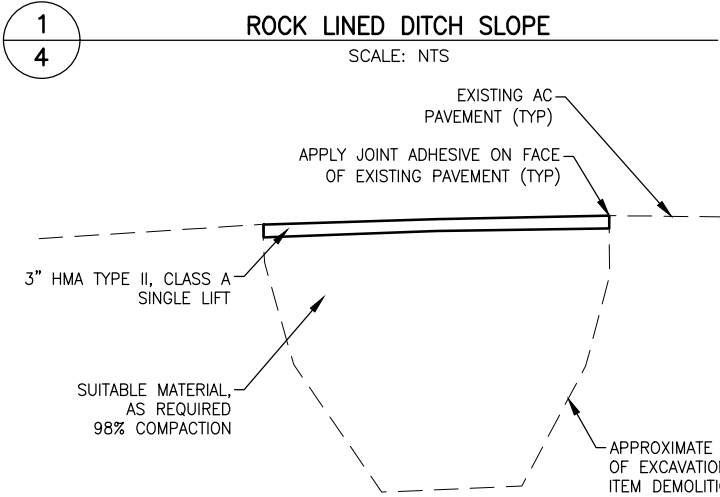
NOTES:

- TOTAL GATE OPENING WILL BE 80 FEET, CENTERED ON THE TL V CENTERLINE.
- USE A VAC TRUCK TO EXPOSE BURIED FUEL LINE AND ELECTRICAL ANYWHERE NEW EQUIPMENT MAY IMPACT EXISTING UNDERGROUND UTILITIES.
- REMOVE ROCKS LINING THE DITCH SLOPE PRIOR TO DISPOSING OF EXCESS EXCAVATED MATERIAL IN THE AREA SHOWN. PLACE EXCESS EXCAVATED MATERIAL A MAXIMUM OF 6" THICK AND MAINTAIN EXISTING DITCH SLOPE (APPROXIMATELY 2:1). PLACE 3" OF TOPSOIL AND SEED PRIOR TO REPLACING ROCKS TO MATCH ADJACENT UNDISTURBED ARMORED SLOPES.



NOTES:

- CONTRACTOR WILL BE REQUIRED TO REMOVE ROCKS LINING THE DITCH IN ORDER TO DRILL FOR GATE POSTS. CONTRACTOR MUST REPLACE ROCKS ONCE POSTS ARE INSTALLED. MATCH ADJACENT UNDISTURBED ARMORED SLOPES. DITCH SLOPE ARMOR STONE RELOCATION WILL BE SUBSIDIARY TO ITEM P165.010.0000.



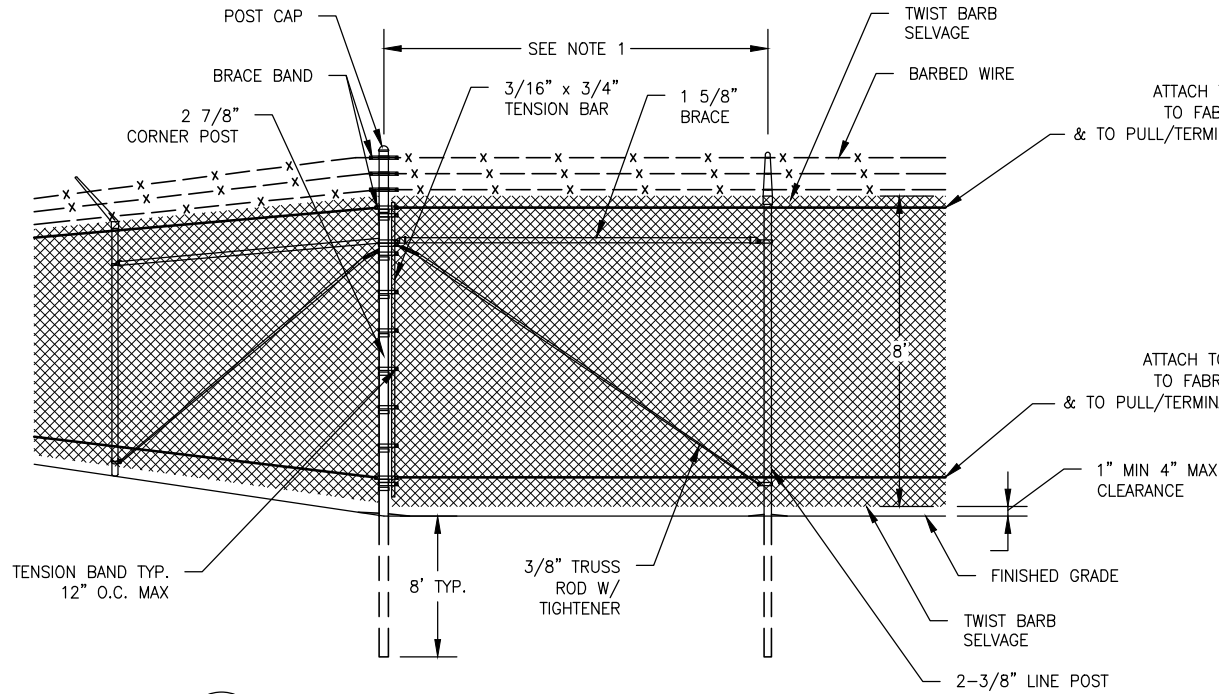
STANTEC CONSULTING SERVICES INC.
3900 C ST SUITE 902
ANCHORAGE, AK 99503-2245
(907) 276-4245
CERTIFICATION OF AUTHORIZATION
#126386

BY	DATE	REVISION

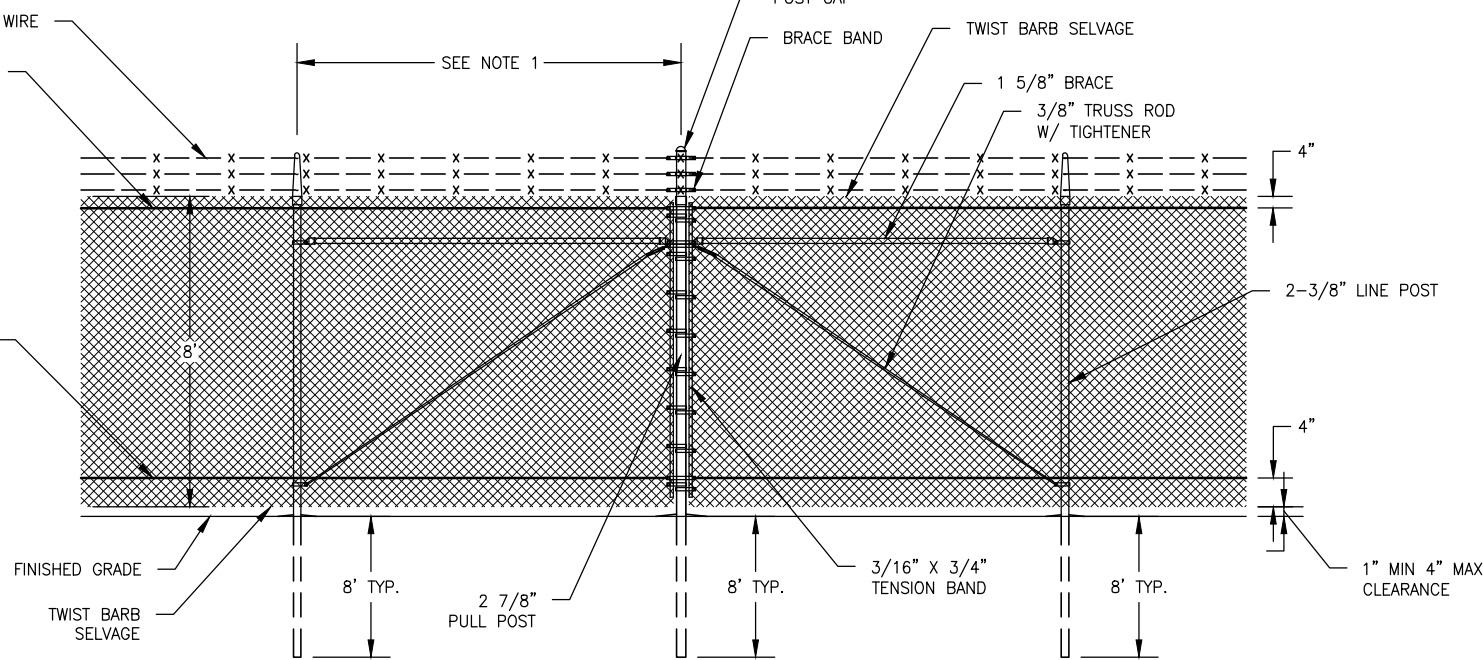
STATE OF ALASKA
DEPARTMENT OF TRANSPORTATION
AND PUBLIC FACILITIES
CENTRAL REGION
4111 AVIATION AVE., ANCHORAGE ALASKA 99502
PHONE (907) 269-0590

TED STEVENS ANCHORAGE
ANCHORAGE, ALASKA
ANC TAXILANE V GATE RECONSTRUCTION
PROJECT No. CFAP01278
AIP NUMBER 3-02-0016-XXX-2025
SITE PLAN

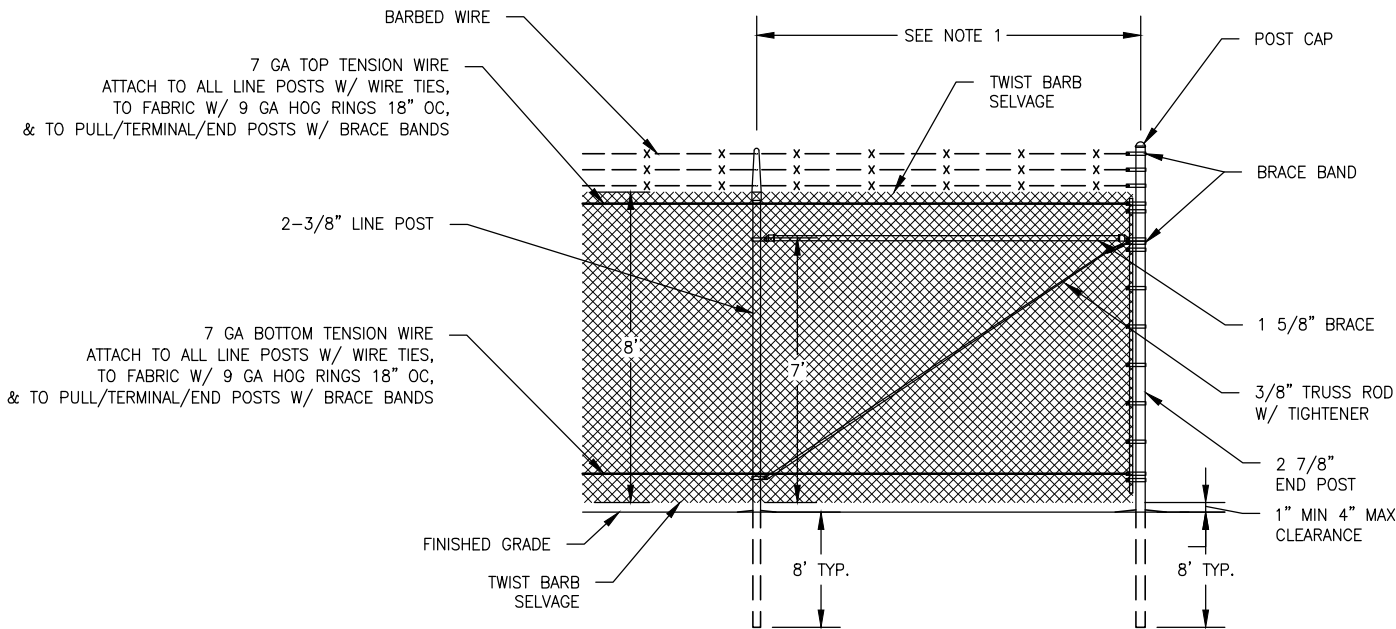
DATE:
02/07/2025
SHEET:
4 OF 15



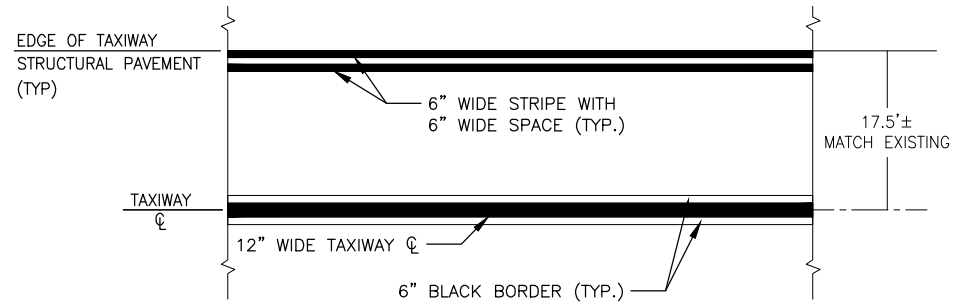
1
5
TYPICAL FENCE CORNER
SCALE: NTS



2
5
TYPICAL FENCE PULL
SCALE: NTS



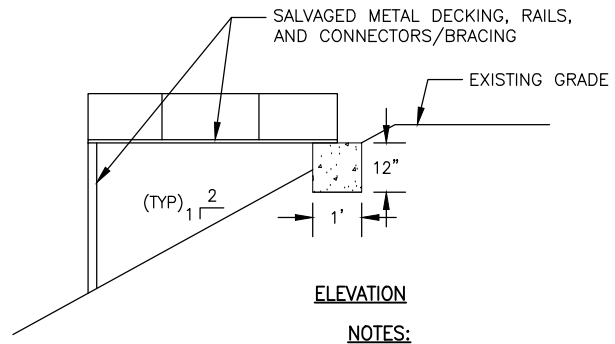
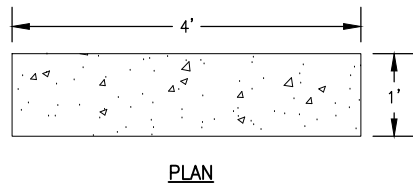
3
5
TYPICAL FENCE TERMINATION
SCALE: NTS



4
5
TAXIWAY MARKINGS REPAIR
SCALE: NTS

MARKING NOTES:

1. THIS DETAIL IS PROVIDED SHOULD ANY TAXILANE MARKING NEED REPAIR AFTER CONSTRUCTION ACTIVITIES. PAYMENT FOR MARKING IS SUBSIDIARY TO OTHER PROJECT PAY ITEMS. REPAIR PAVEMENT MARKINGS AS DIRECTED BY THE ENGINEER.



5
5
CONCRETE FOUNDATION FOR SALVAGED METAL DECKING
SCALE: NTS

NOTES:

1. PROVIDE 6" SUITABLE MATERIAL BENEATH NEW CONCRETE METAL DECKING FOUNDATION. COMPACT TO 98% MAXIMUM DENSITY

GENERAL FENCE NOTES:

1. USE EQUAL POLE SPACING(S). MAXIMUM POLE SPACING IS 10 FEET.
2. ALL FENCE COMPONENTS SHALL BE ASSEMBLED WITH CORRECTLY SIZED BANDS, CAPS, AND FIXTURES.
3. ALL FABRIC TERMINATIONS SHALL BE MADE WITH TENSION BARS AND BANDS.
4. INSTALL POST CAPS ON ALL POSTS AND UPRIGHTS WITHOUT BARBED WIRE ARMS.
5. CONNECT NEW FENCE TO EXISTING FENCE AT AN EXISTING PULL POST, OR INSTALL A NEW PULL OR CORNER POST IN THE EXISTING FENCE LINE. INSTALL FABRIC PER SPECIFICATION F-162.
6. REPAIR ALL DAMAGED GALVANIZED COATINGS WITH COLD GALVANIZING ZINC COMPOUND ACCORDING TO ASTM A780.
7. SEAL ALL POST BASES AND GROUND RODS INSTALLED IN ASPHALT PAVEMENT AREAS WITH CRAFTCO ROADSAVER 522 CRACK SEALANT OR APPROVED EQUAL. COMPLETELY FILL ALL VOIDS WITH SEALANT, FLUSH WITH THE FINISHED ASPHALT SURFACE.



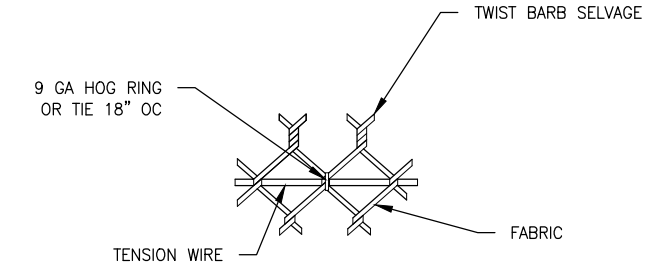
STANTEC CONSULTING SERVICES INC.
3900 C ST SUITE 902
ANCHORAGE, AK 99503-2245
(907) 276-4245
CERTIFICATION OF AUTHORIZATION
#126386

BY	DATE	REVISION

STATE OF ALASKA
DEPARTMENT OF TRANSPORTATION
AND PUBLIC FACILITIES
CENTRAL REGION
4111 AVIATION AVE., ANCHORAGE ALASKA 99502
PHONE (907) 269-0590

TED STEVENS ANCHORAGE
ANCHORAGE, ALASKA
ANC TAXILANE V GATE RECONSTRUCTION
PROJECT No. CFAPT01278
AIP NUMBER 3-02-0016-XXX-2025
DETAILS 1

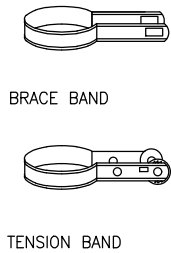
DATE:
02/07/2025
SHEET:
5 of 15



1
6

FABRIC TO TENSION WIRE FASTENERS

SCALE: NTS



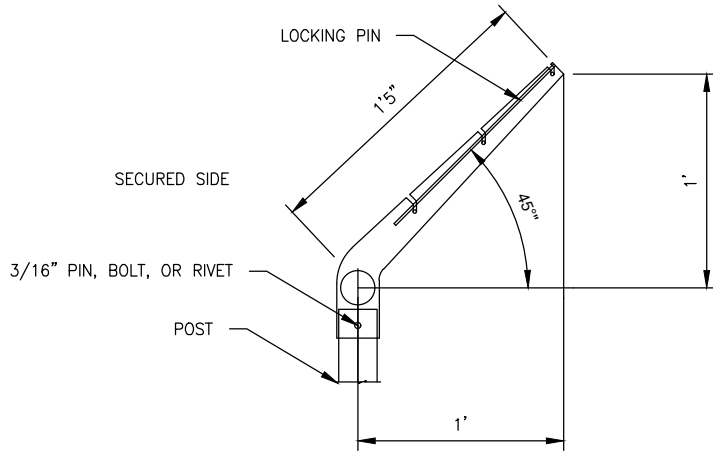
NOTES:

1. TENSION/BRACE BANDS MUST BE SIZED BASED ON FENCE OR GATE POST DIAMETER.

2
6

TENSION/BRACE BAND

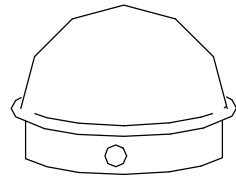
SCALE: NTS



3
6

LINE POST BARBED WIRE ARM

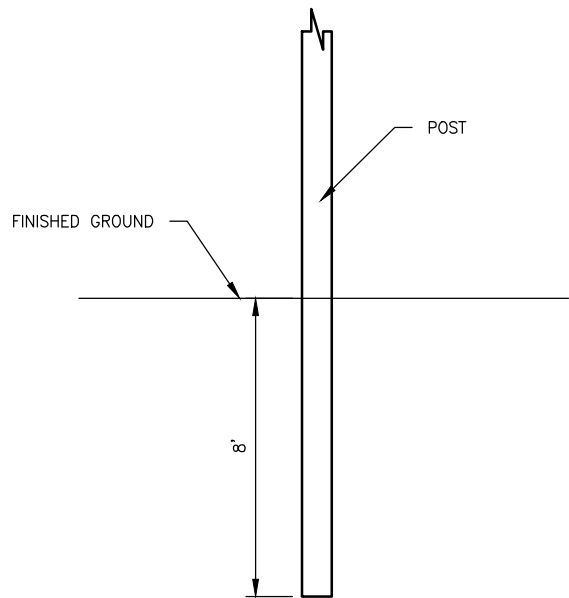
SCALE: NTS



4
6

POST CAP FOR PULL/CORNER/END/GATE POSTS

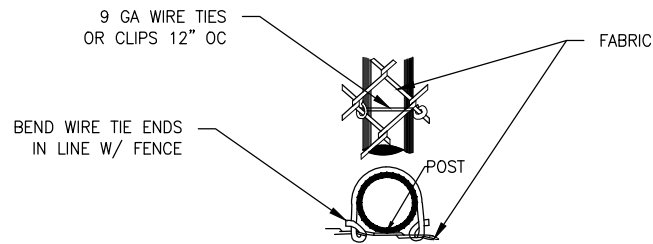
SCALE: NTS



5
6

POST FOUNDATIONS

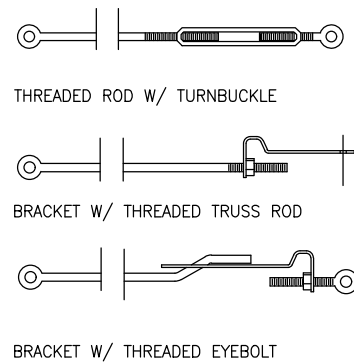
SCALE: NTS



6
6

FABRIC TO POST FASTENERS

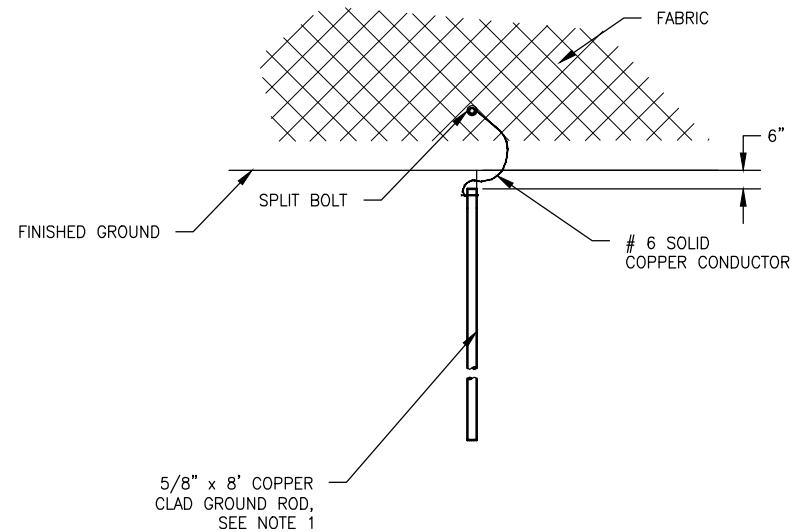
SCALE: NTS



7
6

TRUSS ROD W/TIGHTENER

SCALE: NTS



8
6

GROUND ROD

SCALE: NTS

GENERAL FENCE NOTES:

- ELECTRICAL GROUNDS SHALL BE INSTALLED ALONG THE FENCE WITH A MAXIMUM SPACING OF 500 FEET AND DIRECTLY BELOW ANY OVERHEAD ELECTRICAL LINE CROSSINGS. INSTALL AT LEAST ONE GROUND ROD FOR EACH STRAIGHT FENCE SECTION AND ON EACH SIDE OF ANY GATES.
- ATTACH TRUSS ROD & TIGHTENER TO POSTS WITH BRACE BANDS



STANTEC CONSULTING SERVICES INC.
3900 C ST SUITE 902
ANCHORAGE, AK 99503-2245
(907) 276-4245
CERTIFICATION OF AUTHORIZATION
#126386

BY	DATE	REVISION

STATE OF ALASKA
DEPARTMENT OF TRANSPORTATION
AND PUBLIC FACILITIES
CENTRAL REGION
4111 AVIATION AVE., ANCHORAGE ALASKA 99502
PHONE (907) 269-0590

TED STEVENS ANCHORAGE
ANCHORAGE, ALASKA
ANC TAXILANE V GATE RECONSTRUCTION
PROJECT No. CFAPT01278
AIP NUMBER 3-02-0016-XXX-2025
DETAILS 2

DATE:
02/07/2025
SHEET:
6 OF 15



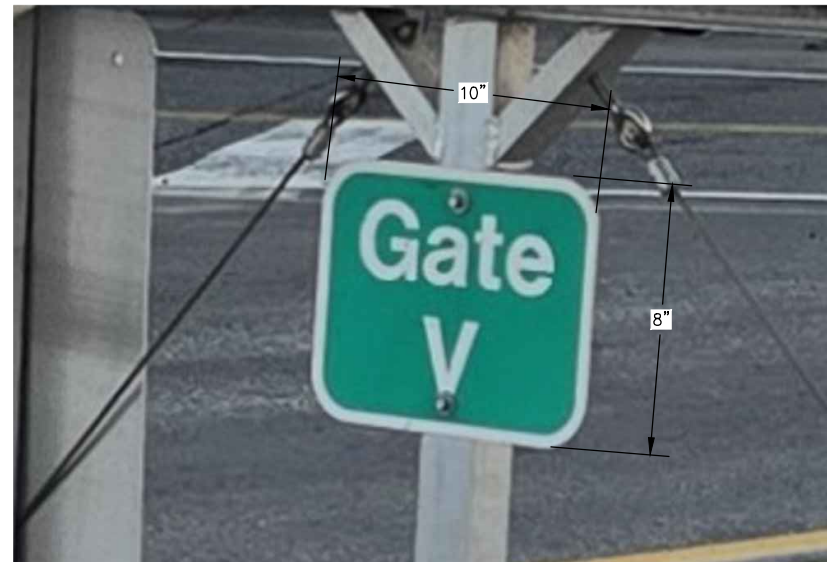
NOTES:

1. SALVAGE 2 SIGNS FROM EXISTING GATE AND REINSTALL ON NEW GATE. REUSE EXISTING STAINLESS STEEL HARDWARE OR PROVIDE NEW, AS APPROVED BY THE ENGINEER. THIS WORK IS SUBSIDIARY TO ITEM F162.060.0120. INSTALL IN SIMILAR LOCATION ON NEW GATE PANEL AS DIRECTED BY THE ENGINEER.



GATE ACCESS SIGN

SCALE: NTS



NOTES:

1. SALVAGE 2 SIGNS FROM EXISTING GATE AND REINSTALL ON NEW GATE. REUSE EXISTING STAINLESS STEEL HARDWARE OR PROVIDE NEW, AS APPROVED BY THE ENGINEER. THIS WORK IS SUBSIDIARY TO ITEM F162.060.0120. INSTALL IN SIMILAR LOCATION ON NEW GATE PANEL AS DIRECTED BY THE ENGINEER.



AIRFIELD GATE DESIGNATION SIGN

SCALE: NTS



NOTES:

1. SALVAGE 1 SIGNS FROM ORIGINAL GATE AND REINSTALL ON NEW TL V GATE. REUSE EXISTING STAINLESS STEEL HARDWARE OR PROVIDE NEW, AS APPROVED BY THE ENGINEER. THIS WORK IS SUBSIDIARY TO ITEM F162.060.0120.

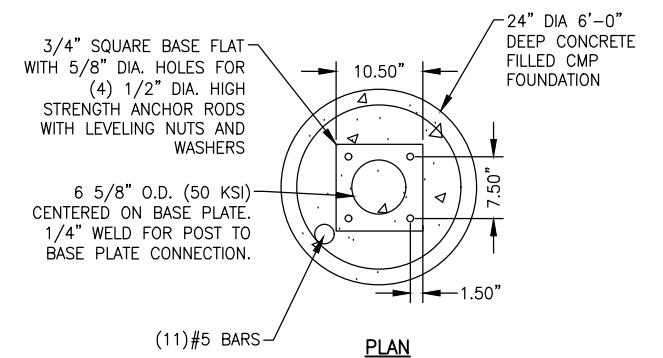
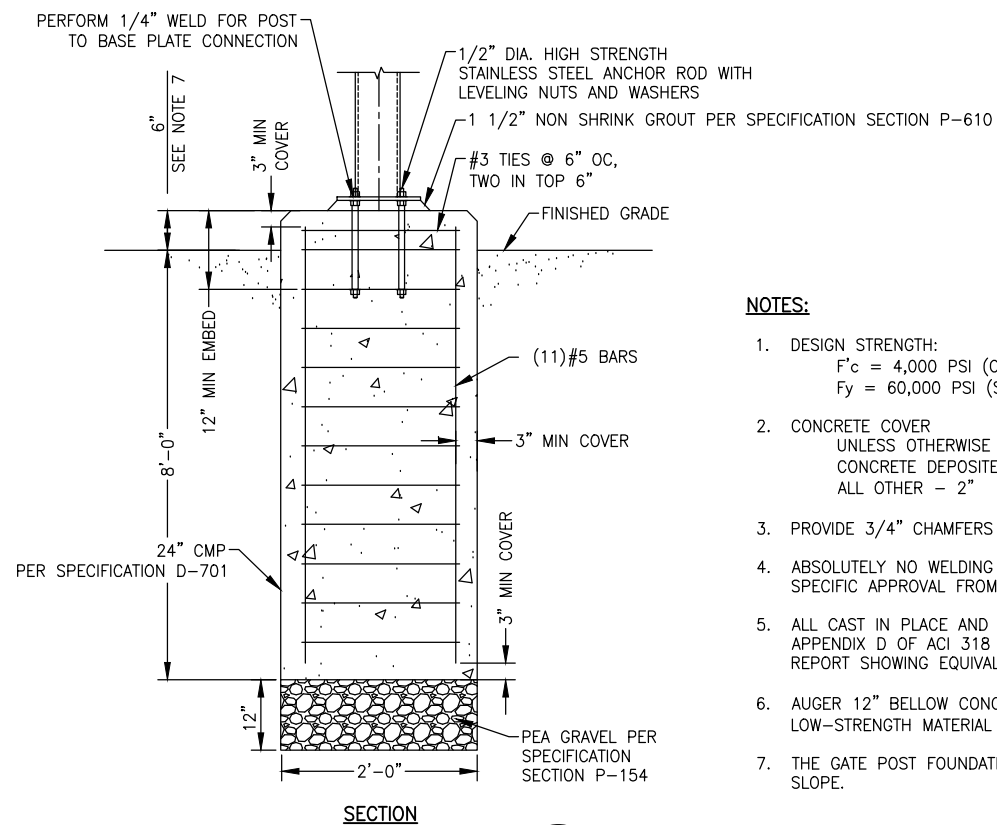


RESTRICTED AREA SIGN

SCALE: NTS



STANTEC CONSULTING SERVICES INC.
3900 C ST SUITE 902
ANCHORAGE, AK 99503-2245
(907) 276-4245
CERTIFICATION OF AUTHORIZATION
#126386



NOTES:

1. DESIGN STRENGTH:
F'c = 4,000 PSI (CONCRETE)
Fy = 60,000 PSI (STEEL)
2. CONCRETE COVER
UNLESS OTHERWISE NOTED, PROVIDE CONCRETE COVER FOR REINFORCING AS FOLLOWS:
CONCRETE DEPOSITED AGAINST EARTH - 3"
ALL OTHER - 2"
3. PROVIDE 3/4" CHAMFERS AT ALL EXPOSED EDGES.
4. ABSOLUTELY NO WELDING OF REINFORCEMENT BARS OR TORCHING TO BEND REINFORCING BARS WILL BE ALLOWED WITHOUT SPECIFIC APPROVAL FROM STRUCTURAL ENGINEER.
5. ALL CAST IN PLACE AND POST-INSTALLED ANCHORS INDICATED IN THE STRUCTURAL DOCUMENTS MUST COMPLY WITH APPENDIX D OF ACI 318 AND CHAPTER 19 OF THE IBC. ALL EXPANSION AND ADHESIVE ANCHORS MUST HAVE THE ICC REPORT SHOWING EQUIVALENT LOAD CAPACITY. SUBMIT AND INSTALL PER THE ICC EVALUATION REPORT.
6. AUGER 12" BELLOW CONCRETE FOOTING, AND INSTALL LAYER OF PEA GRAVEL. BACKFILL ANNULUS WITH CONTROLLED LOW-STRENGTH MATERIAL (CLSM) PER SPECIFICATION P-153.
7. THE GATE POST FOUNDATION MUST EXTEND SIX FEET ABOVE EXISTING GROUND FOR TWO SOUTH MOST GATE POSTS ON DITCH SLOPE.



GATE POST FOUNDATION

SCALE: NTS

BY	DATE	REVISION

**STATE OF ALASKA
DEPARTMENT OF TRANSPORTATION
AND PUBLIC FACILITIES
CENTRAL REGION
4111 AVIATION AVE., ANCHORAGE ALASKA 99502
PHONE (907) 269-0590**

TED STEVENS ANCHORAGE
ANCHORAGE, ALASKA
ANC TAXILANE V GATE RECONSTRUCTION
PROJECT No. CFAPT01278
AIP NUMBER 3-02-0016-XXX-2025
DETAILS 3

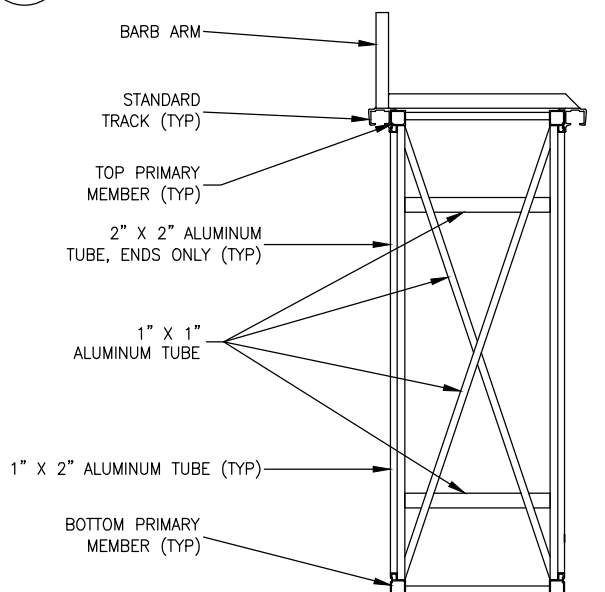
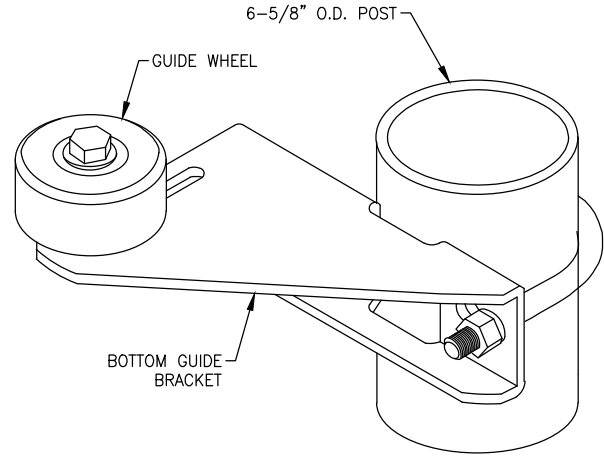
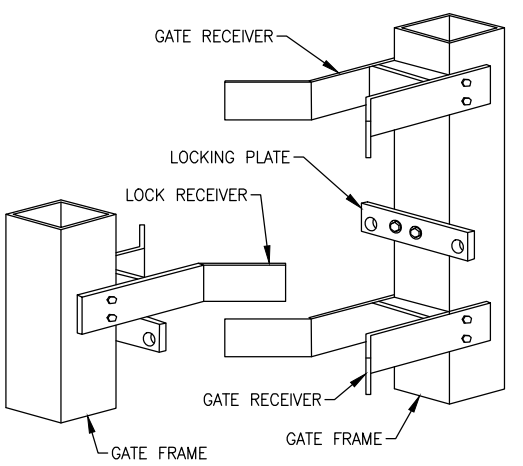
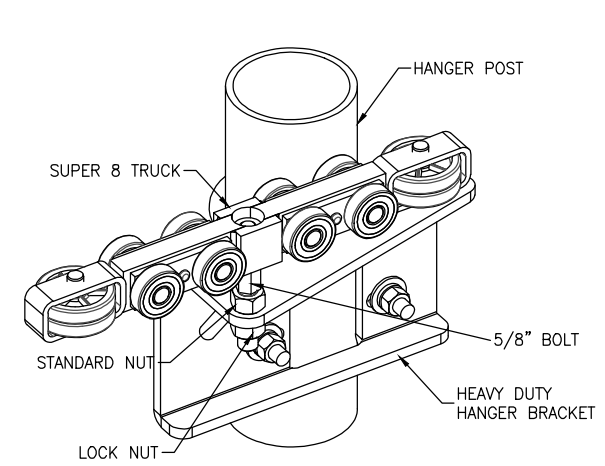
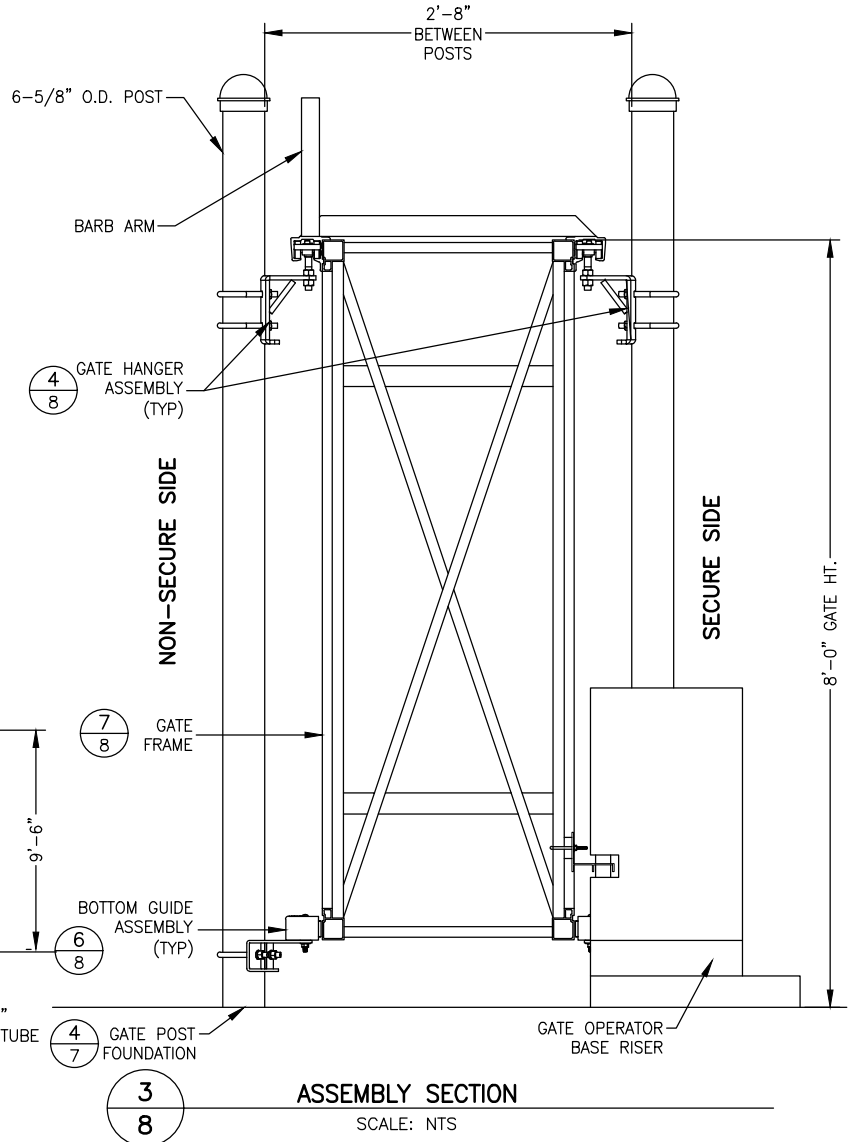
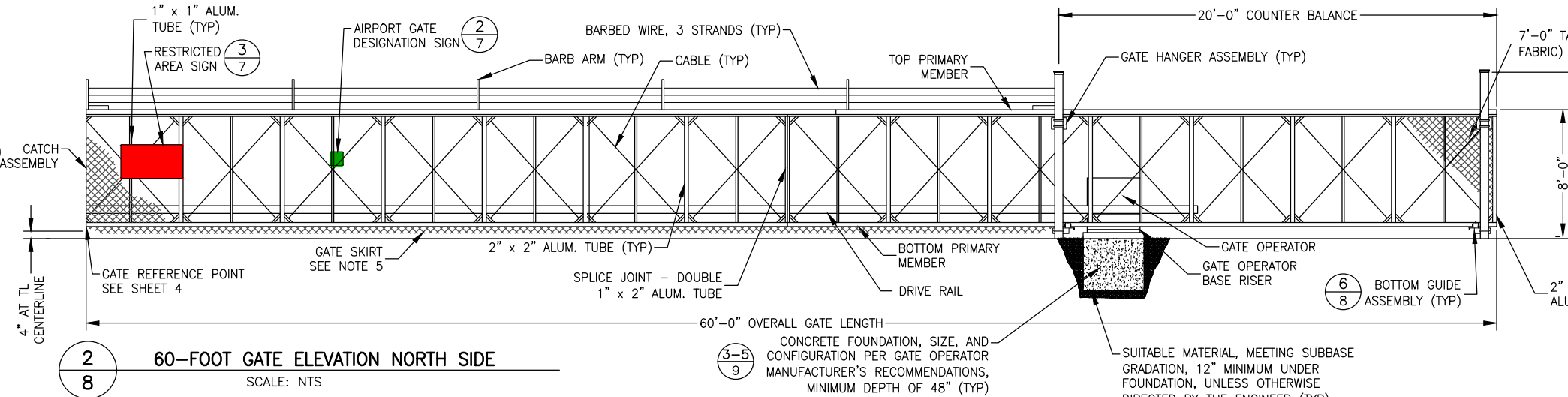
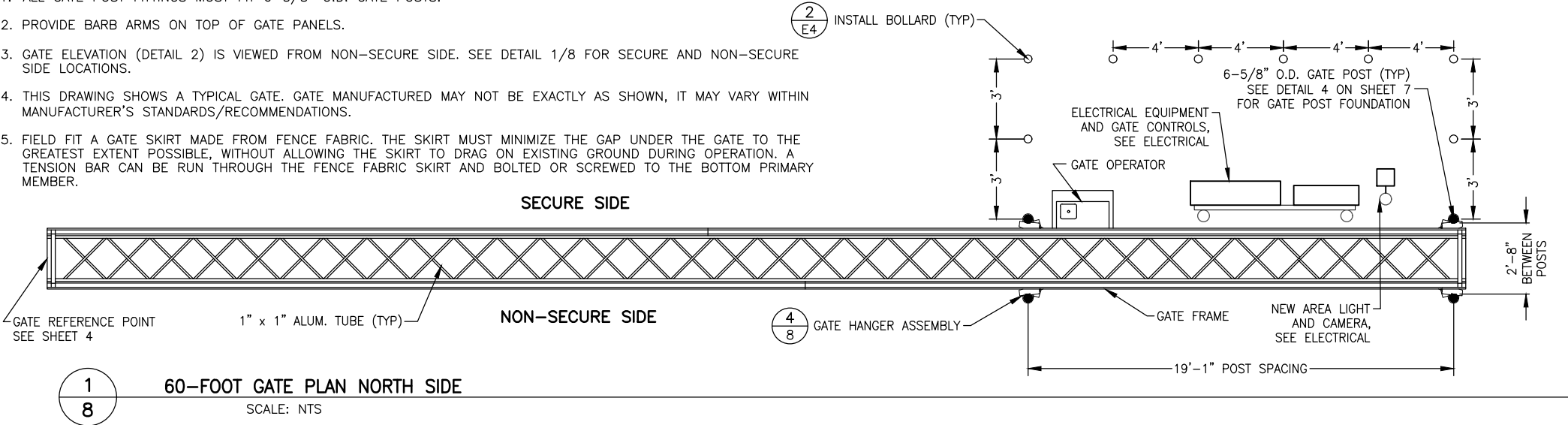
DATE:
02/07/2025

SHEET:
7 OF 15

2/10/2025, 12:33 PM
Date Revised: 2/10/2025, 12:33 PM
Layout Name: DETAILS 5
File Path and Name: U:\2023\017184\drawing\01278-details.dwg
Designed By: LEN
Drawn By: JAG
Checked By: EUG

60-FOOT GATE NOTES

1. ALL GATE POST FITTINGS MUST FIT 6-5/8" O.D. GATE POSTS.
2. PROVIDE BARB ARMS ON TOP OF GATE PANELS.
3. GATE ELEVATION (DETAIL 2) IS VIEWED FROM NON-SECURE SIDE. SEE DETAIL 1/8 FOR SECURE AND NON-SECURE SIDE LOCATIONS.
4. THIS DRAWING SHOWS A TYPICAL GATE. GATE MANUFACTURED MAY NOT BE EXACTLY AS SHOWN, IT MAY VARY WITHIN MANUFACTURER'S STANDARDS/RECOMMENDATIONS.
5. FIELD FIT A GATE SKIRT MADE FROM FENCE FABRIC. THE SKIRT MUST MINIMIZE THE GAP UNDER THE GATE TO THE GREATEST EXTENT POSSIBLE, WITHOUT ALLOWING THE SKIRT TO DRAG ON EXISTING GROUND DURING OPERATION. A TENSION BAR CAN BE RUN THROUGH THE FENCE FABRIC SKIRT AND BOLTED OR SCREWED TO THE BOTTOM PRIMARY MEMBER.



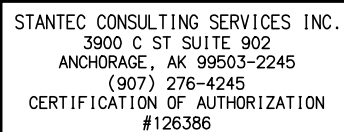
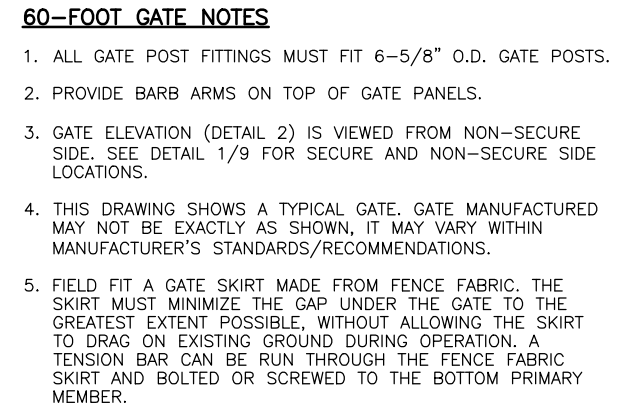
STANTEC CONSULTING SERVICES INC.
3900 C ST SUITE 902
ANCHORAGE, AK 99503-2245
(907) 276-4245
CERTIFICATION OF AUTHORIZATION
#126386

BY	DATE	REVISION

STATE OF ALASKA
DEPARTMENT OF TRANSPORTATION
AND PUBLIC FACILITIES
CENTRAL REGION
4111 AVIATION AVE., ANCHORAGE ALASKA 99502
PHONE (907) 269-0590

TED STEVENS ANCHORAGE
ANCHORAGE, ALASKA
ANC TAXILANE V GATE RECONSTRUCTION
PROJECT No. CFAPT01278
AIP NUMBER 3-02-0016-XXX-2025
DETAILS 4

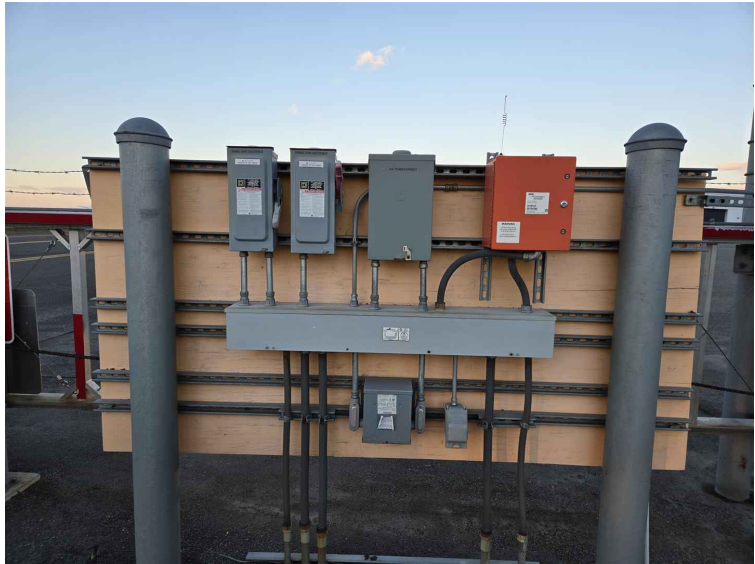
DATE: 02/07/2025
SHEET: 8 OF 15



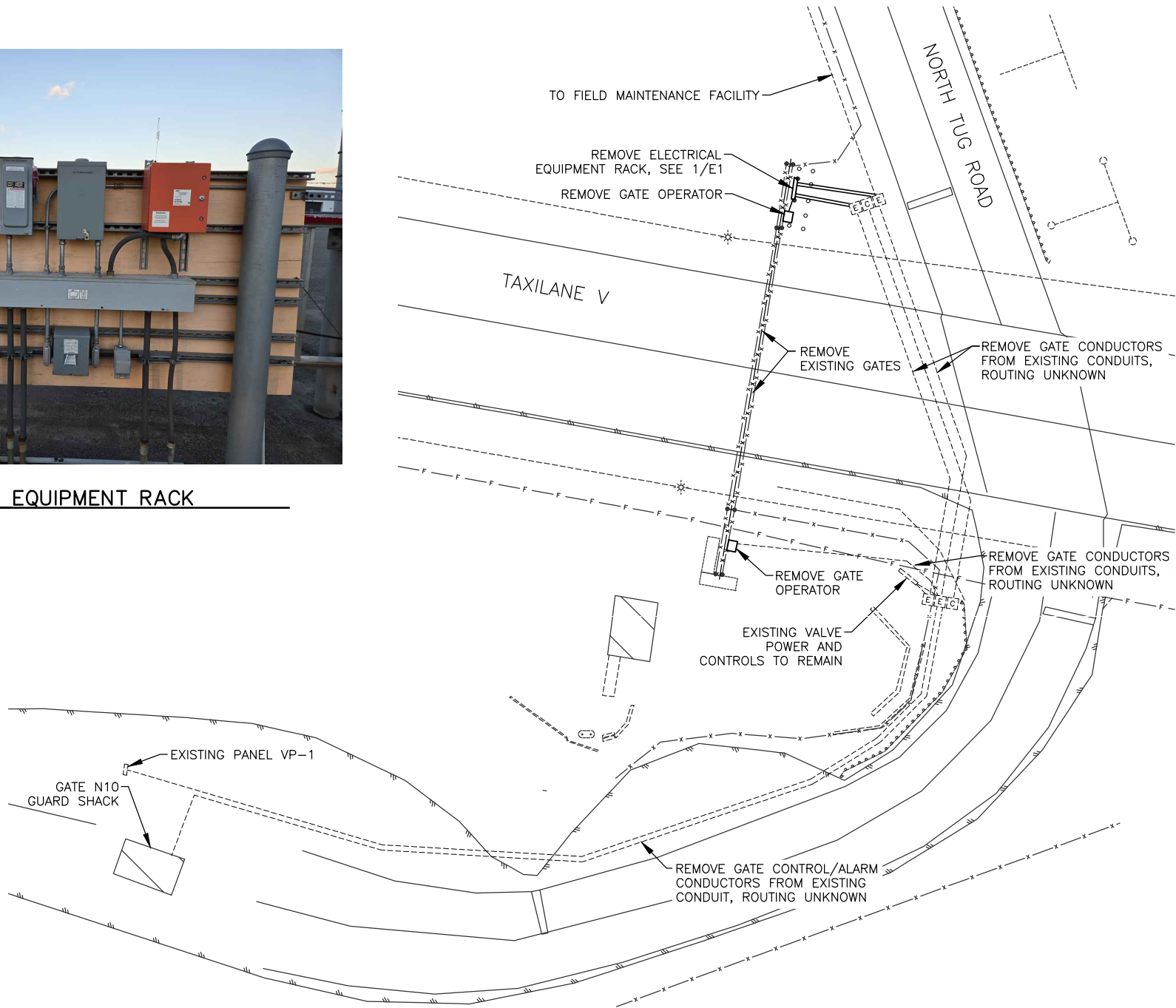
**STATE OF ALASKA
DEPARTMENT OF TRANSPORTATION
AND PUBLIC FACILITIES
CENTRAL REGION
4111 AVIATION AVE., ANCHORAGE ALASKA 99502
PHONE (907) 269-0590**

DATE: 02/07/2025

SHEET: 9 OF 15



1 ELECTRICAL EQUIPMENT RACK

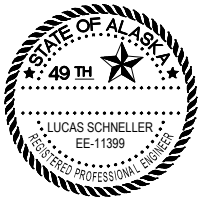


2 ELECTRICAL SITE PLAN – DEMOLITION



GENERAL NOTES:

1. EXISTING CONDUIT AND WIRING CONFIGURATION IS DERIVED FROM ASBUILT DRAWINGS AND LIMITED SITE INVESTIGATION. CONFIRM EXISTING CONDITIONS PRIOR TO STARTING WORK.
2. EXISTING TO REMAIN CONDUIT AND EQUIPMENT ARE SHOWN IN LIGHT DASHED LINES. CONDUIT AND EQUIPMENT TO BE REMOVED ARE SHOWN IN BOLD SOLID LINES.
3. REMOVE ALL EQUIPMENT AS SHOWN. REMOVAL SHALL INCLUDE ALL ASSOCIATED CONTROLS, CONDUIT, CONDUCTORS, SUPPORTS, AND OTHER COMPONENTS UNLESS OTHERWISE INDICATED.
4. ALL REMOVED GATES, GATE OPERATORS, AND CONTROL COMPONENTS SHALL BE OFFERED TO AIRFIELD MAINTENANCE FOR SALVAGE. ALL OFFERED MATERIALS DEEMED NON-SALVAGEABLE AND ALL OTHER REMOVED MATERIALS SHALL BE DISPOSED OF OFF OF AIRPORT PROPERTY IN ACCORDANCE WITH APPLICABLE REGULATIONS. DISPOSAL COSTS ARE SUBSIDIARY TO THE CONTRACT.



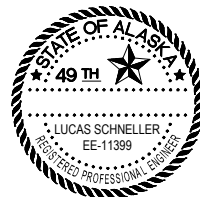
STANTEC CONSULTING SERVICES INC.
3900 C ST SUITE 902
ANCHORAGE, AK 99503-2245
(907) 276-4245
CERTIFICATION OF AUTHORIZATION
#126386

BY	DATE	REVISION

STATE OF ALASKA
DEPARTMENT OF TRANSPORTATION
AND PUBLIC FACILITIES
CENTRAL REGION
4111 AVIATION AVE., ANCHORAGE ALASKA 99502
PHONE (907) 269-0590

TED STEVENS ANCHORAGE
ANCHORAGE, ALASKA
ANC TAXILANE V GATE RECONSTRUCTION
PROJECT No. CFAPT01278
AIP NUMBER 3-02-0016-XXX-2025
ELECTRICAL DEMOLITION PLAN

DATE: 02/07/2025
SHEET: E1 OF 15

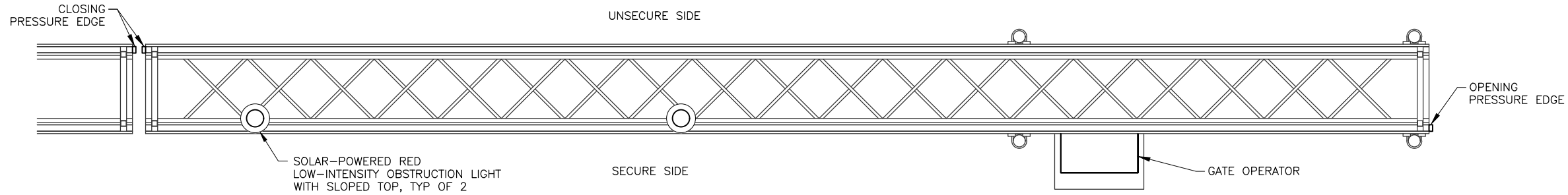


BY	DATE	REVISION

DATE:
02/07/2025

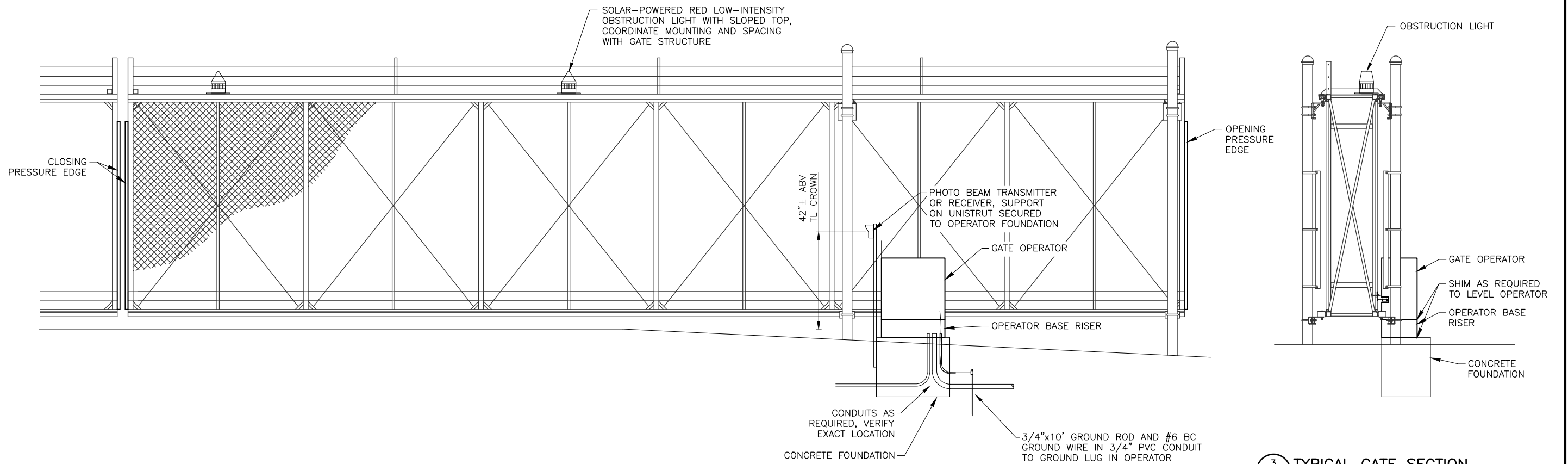
SHEET:
E2 OF 15

Date Revised: 2/10/2025, 12:34 PM
Layout Name: DETAILS 1
File Path and Name: U:\207307184\drawing\electrical\01278-ANC-E03-E06-ELEC_DETAILS.dwg
Designed By: LPS
Drawn By: JCA/LPS
Checked By: CLR



1 TYPICAL GATE PLAN
E3 NTS

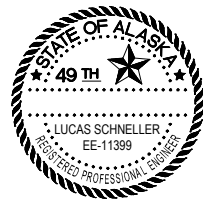
ONE HALF OF DOUBLE GATE SHOWN, OPPOSITE SIDE SIMILAR



2 TYPICAL GATE ELEVATION
E3 NTS

ONE HALF OF DOUBLE GATE SHOWN, OPPOSITE SIDE SIMILAR

3 TYPICAL GATE SECTION
E3 NTS



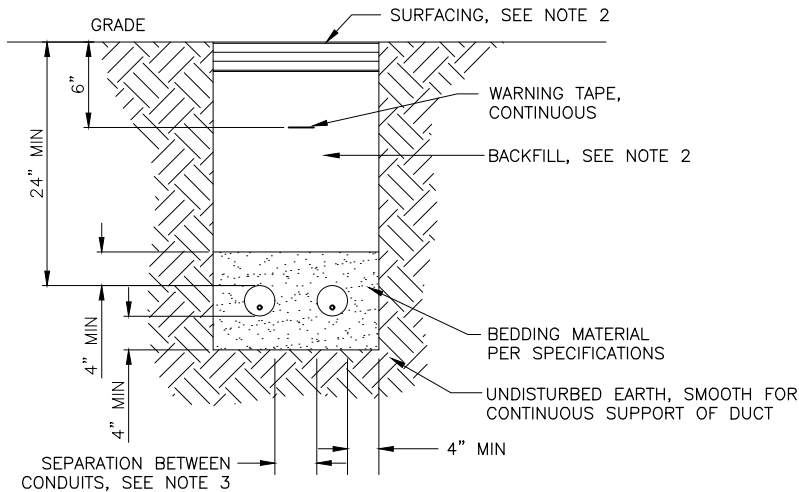
STANTEC CONSULTING SERVICES INC.
3900 C ST SUITE 902
ANCHORAGE, AK 99503-2245
(907) 276-4245
CERTIFICATION OF AUTHORIZATION
#126386

BY	DATE	REVISION

STATE OF ALASKA
DEPARTMENT OF TRANSPORTATION
AND PUBLIC FACILITIES
CENTRAL REGION
4111 AVIATION AVE., ANCHORAGE ALASKA 99502
PHONE (907) 269-0590

TED STEVENS ANCHORAGE
ANCHORAGE, ALASKA
ANC TAXILANE V GATE RECONSTRUCTION
PROJECT No. CFAPT01278
AIP NUMBER 3-02-0016-XXX-2025
ELECTRICAL DETAILS 1

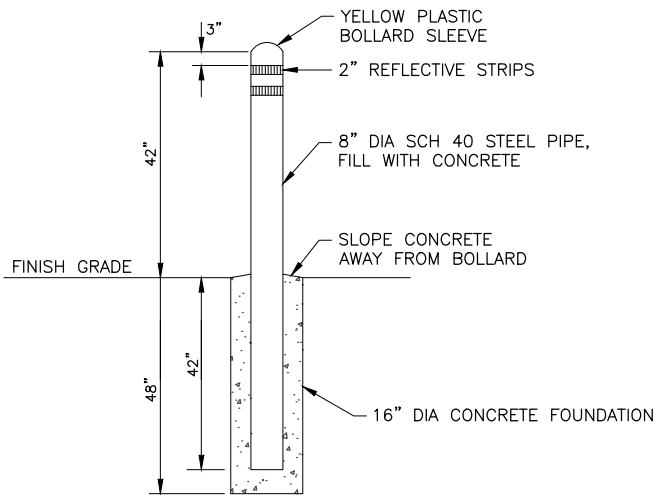
DATE: 02/07/2025
SHEET: E3 OF 15



NOTES:

1. WIDTH OF TRENCH AND NUMBER OF CONDUITS PER TRENCH WILL VARY (2 SHOWN).
2. SURFACING AND BACKFILL PER DETAIL 2/4.
3. USE COMMERCIALLY MANUFACTURED DUCT SPACERS IN COMMON DUCTBANKS WITH PARALLEL CONDUITS SPACED EVERY 5' O.C. TO MAINTAIN SEPARATION. SEPARATION BETWEEN CONDUITS MUST BE AS FOLLOWS:
 - CONDUITS OF SAME TYPE (POWER OR SIGNAL) UNDER SAME OWNERSHIP - 2"
 - POWER AND SIGNAL CONDUITS - 12" MIN

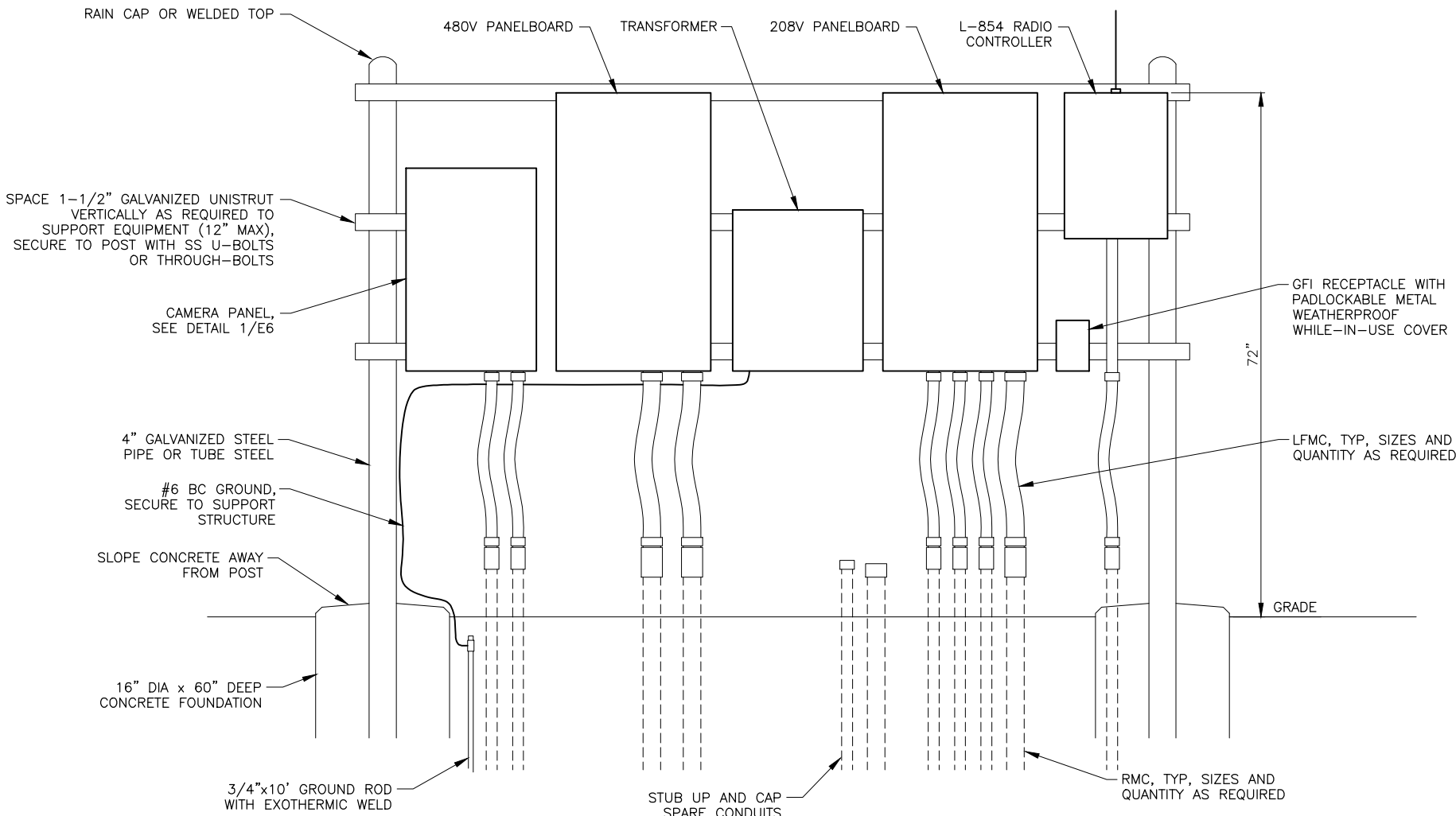
1 TYPICAL CONDUIT TRENCH DETAIL
E4 NTS



2 BOLLARD DETAIL
E4 NTS

NOTES:

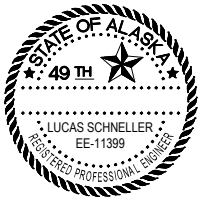
1. SEE DETAIL 1 OF 8 FOR LAYOUT PLAN



DETAIL NOTES:

1. ADJUST WIDTH AS REQUIRED FOR EQUIPMENT INSTALLED, 24" MINIMUM, 72" MAXIMUM SPAN WITHOUT ADDITIONAL SUPPORT.
2. EQUIPMENT ARRANGEMENT AND CONNECTIONS ARE SUGGESTED. CONTRACTOR SHALL DETERMINE FINAL MOUNTING AND ARRANGEMENT.

3 ELECTRICAL EQUIPMENT RACK
E4 SCALE: N.T.S.



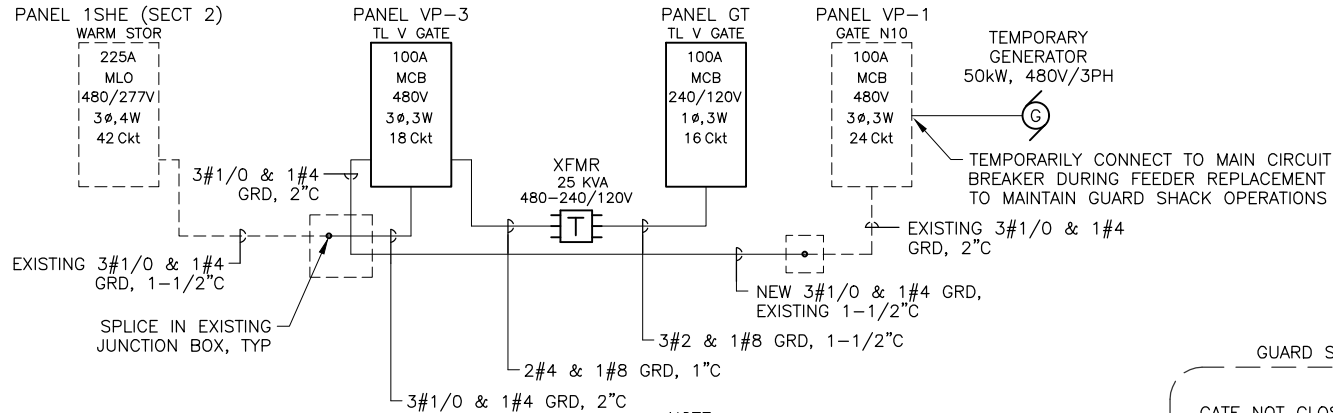
STANTEC CONSULTING SERVICES INC.
3900 C ST SUITE 902
ANCHORAGE, AK 99503-2245
(907) 276-4245
CERTIFICATION OF AUTHORIZATION
#126386

BY	DATE	REVISION

STATE OF ALASKA
DEPARTMENT OF TRANSPORTATION
AND PUBLIC FACILITIES
CENTRAL REGION
4111 AVIATION AVE., ANCHORAGE ALASKA 99502
PHONE (907) 269-0590

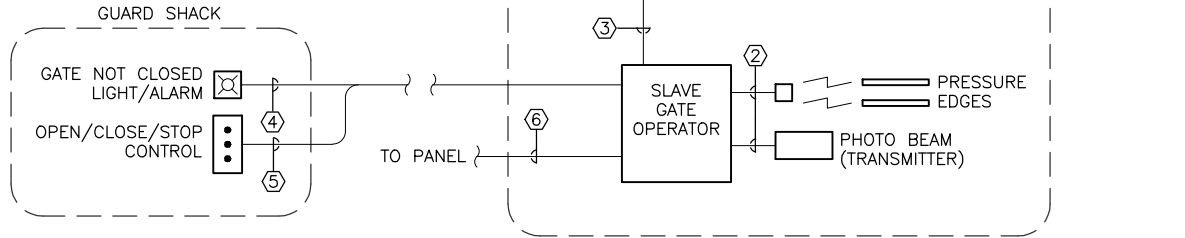
TED STEVENS ANCHORAGE
ANCHORAGE, ALASKA
ANC TAXILANE V GATE RECONSTRUCTION
PROJECT No. CFAPT01278
AIP NUMBER 3-02-0016-XXX-2025
ELECTRICAL DETAILS 2

DATE: 02/07/2025
SHEET: E4 OF 15



1 ELECTRICAL RISER DIAGRAM
E5 NTS

NOTE:
SOME CONDUITS CONTAIN ADDITIONAL CONDUCTORS. SEE ELECTRICAL PLAN FOR ADDITIONAL INFORMATION.



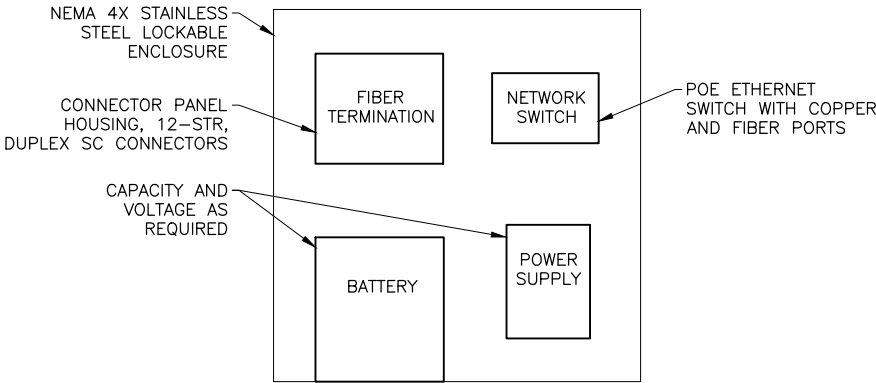
2 GATE SYSTEM DIAGRAM
E5 NTS

EXISTING PANEL VP-1										
CKT	LOAD	BRANCH		CONNECTED KVA			BRANCH		LOAD	CKT
		BKR	VA	A	B	C	VA	BKR		
1	MAIN	100/3		10.1			10100	70/3	45kVA TRANSFORMER TO VP-2 IN GUARD SHACK	2
3					10.1		10100			4
5						10.1	10100			6
7			SPARE	40/2		0.0				
9	(PREVIOUSLY SERVING GATE PANEL)				0.0			20/1	SPARE	10
11	WV36 MOV DISCONNECTS AND CONTROL PANEL	30/3	3500			3.5		20/1	SPARE	12
13			3500	3.5			20/1	SPARE	14	
15			3500		3.5					16
17	SPARE	20/1				0.0				18
19	SPARE	20/1		0.0						20
21	SPARE	20/1			0.0					22
23						0.0				24
CONNECTED LOAD				40.8 KVA	13.6	13.6	13.6	PANEL SPECIFICATIONS		
				49 AMPS	49	49	49	MAINS RATING AMPS - 100		
NEC DEMAND				40.8 KVA				MAIN CIRCUIT BREAKER AMPERES - 100		
				49 AMPS				CAPACITY ONE-POLE CIRCUITS - 24		
PANEL NOTES					SYSTEM VOLTAGE - 480 PHASE, NO. OF WIRES - 3 PH, 3 W AIC RATING - 18,000 MOUNTING - POST LOCATION - GATE N10					
1. NEMA 4X ENCLOSURE.										
2. EXISTING LOADS OBTAINED FROM ASBUILT DRAWINGS.										

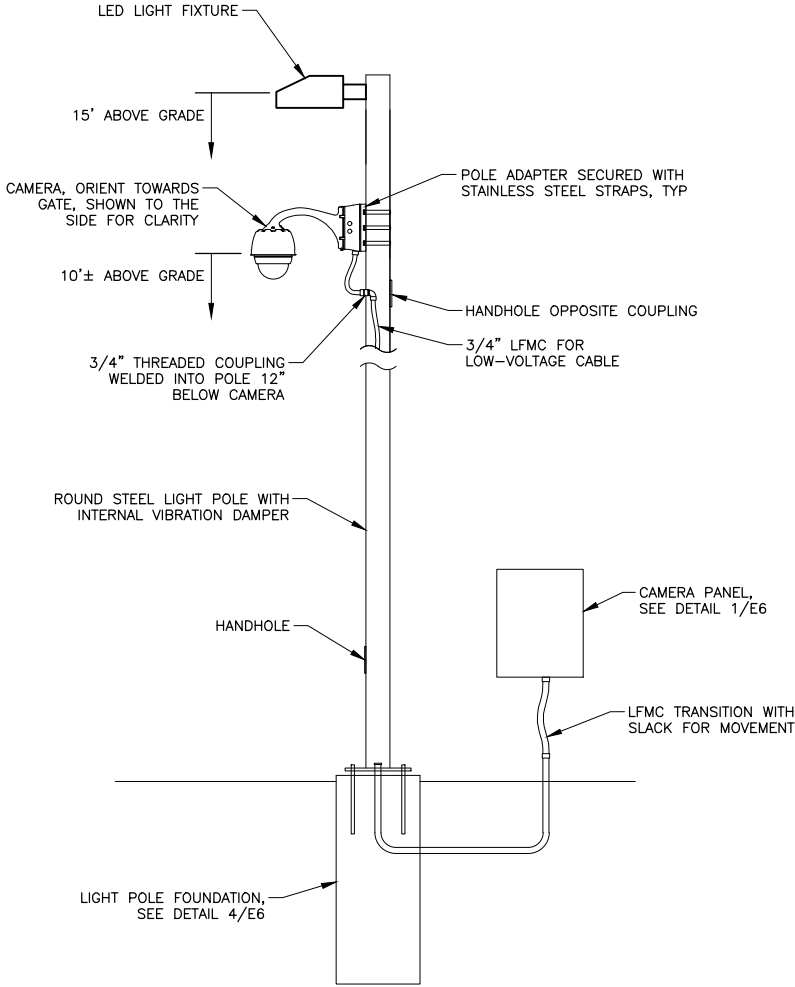
Designed By: LPS
Drawn By: JCA/LPS
Checked By: CLR

2/10/2025, 12:34 PM
Layout Name: DETAILS - 4
File Path and Name: U:\2073017184\drawing\sheets\01278-ANC-E03-E06-ELEC_DETAILS.dwg

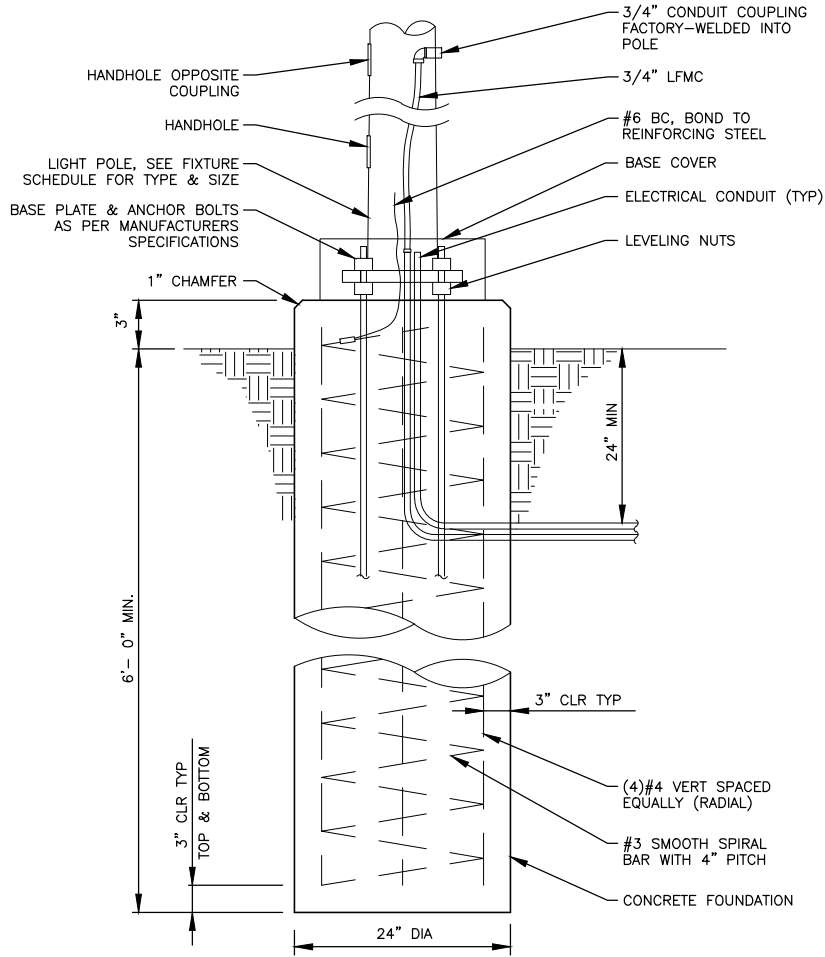
Date Revised:
Layout Name:
File Path and Name:



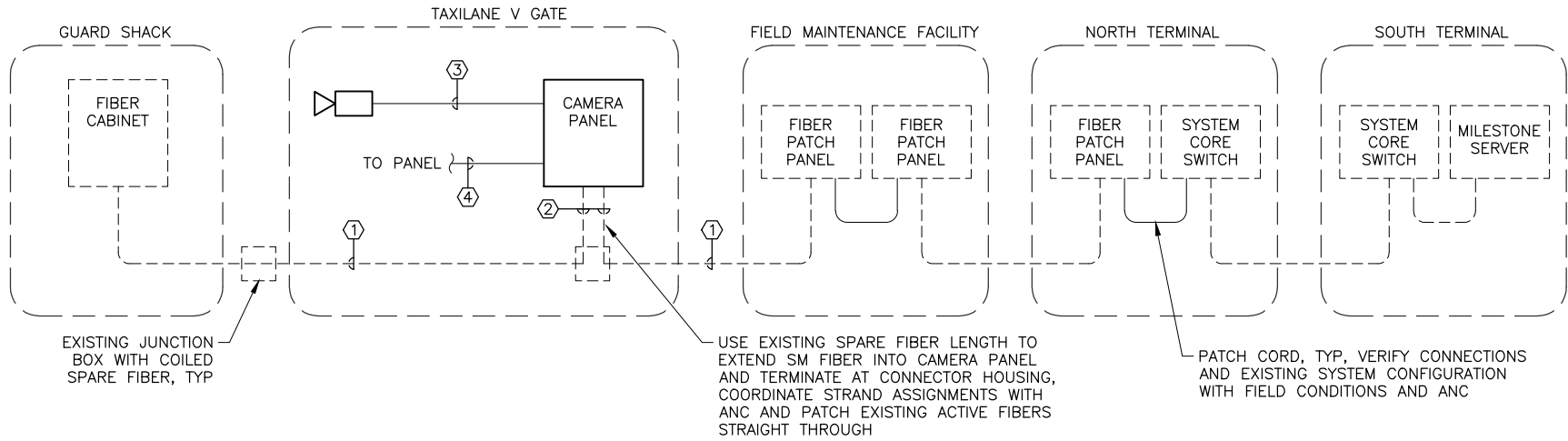
1 CAMERA PANEL
E6 NTS



3 POLE-MOUNTED CAMERA DETAIL
E6 NTS

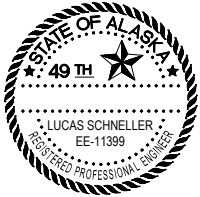


4 LIGHT POLE FOUNDATION DETAIL
E6 NTS



2 CAMERA SYSTEM DIAGRAM
E6 NTS

CABLE SCHEDULE	
①	1-6STR SM FIBER, 1-12STR MM FIBER (EXISTING)
②	1-6STR SM FIBER (EXISTING)
③	1-4PR CAT 6 (CAMERA SIGNAL/POWER)
④	3-12AWG (120V PWR, GRD)



STANTEC CONSULTING SERVICES INC.
3900 C ST SUITE 902
ANCHORAGE, AK 99503-2245
(907) 276-4245
CERTIFICATION OF AUTHORIZATION
#126386

BY	DATE	REVISION

STATE OF ALASKA
DEPARTMENT OF TRANSPORTATION
AND PUBLIC FACILITIES
CENTRAL REGION
4111 AVIATION AVE., ANCHORAGE ALASKA 99502
PHONE (907) 269-0590

TED STEVENS ANCHORAGE
ANCHORAGE, ALASKA
ANC TAXILANE V GATE RECONSTRUCTION
PROJECT No. CFAPT01278
AIP NUMBER 3-02-0016-XXX-2025
ELECTRICAL DETAILS 4

DATE:
02/07/2025
SHEET:
E6 OF 15

Designed By: LEN
Drawn By: JAG
Checked By: EUG

Date Reviset: 2/10/2025, 12:34 PM
Layout Name: ESCP COVER
File Path and Name: U:\202501718A\drawing\01278-ESCP.dwg



CONSTRUCTION PLANS

TED STEVENS

ANCHORAGE INTERNATIONAL AIRPORT

ANCHORAGE, ALASKA

ANC TAXILANE V GATE RECONSTRUCTION

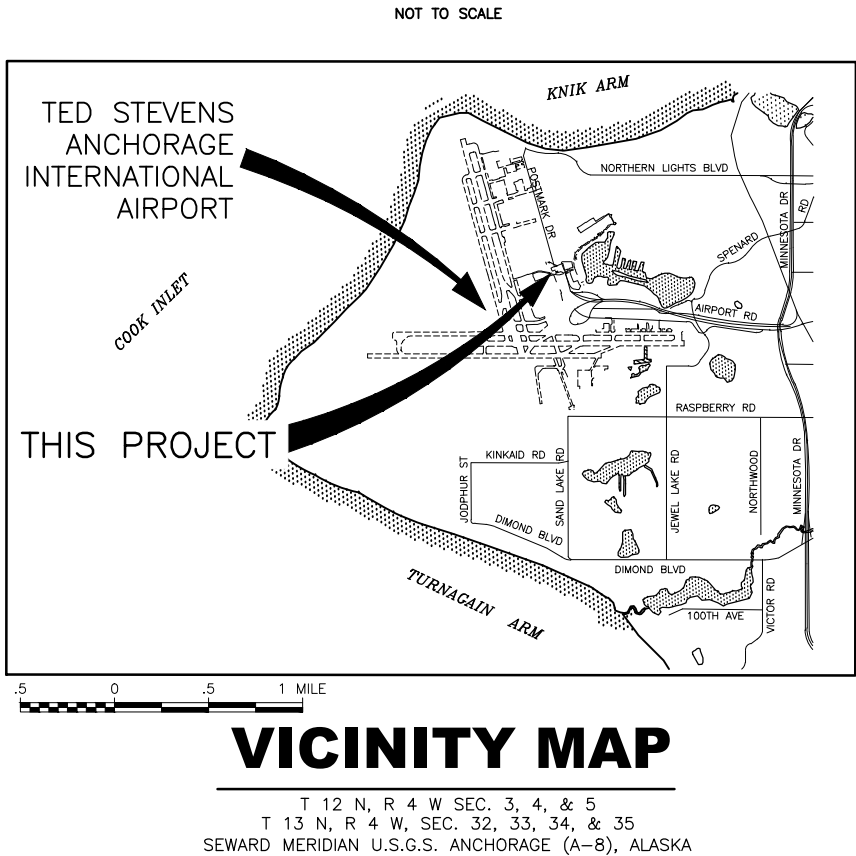
PROJECT No. CFAPT01278

AIRPORT IMPROVEMENT PROGRAM

No. 3-02-0016-XXX-2025

ESCP

FEBRUARY 2025



GENERAL ESCP NOTES:

- REFER TO ESCP FOR EROSION CONTROL BEST MANAGEMENT PRACTICES (BMPS).
- DEVELOP A STORM WATER POLLUTION PREVENTION PLAN (SWPPP) FOR THIS PROJECT. COMPLY WITH THE ALASKA POLLUTANT DISCHARGE ELIMINATION SYSTEM (APDES) REQUIREMENTS FOR STORM WATER DISCHARGE FROM CONSTRUCTION SITES. SEE SECTION 641 OF THE SPECIAL PROVISIONS, THE ALASKA SWPPP GUIDE (AS CURRENTLY AMENDED), AND ALL CONDITIONS OF PERMIT APPROVALS. WORK SHOWN HERE IS MINIMUM REQUIRED.
- INSTALL SEDIMENT CONTROL DEVICES BEFORE ERODIBLE SOILS ARE EXPOSED AND MAY HAVE TO REMOVE AND REINSTALL CONTROLS DAILY TO ALLOW CONSTRUCTION ACTIVITIES TO PROCEED. ALL DEVICES SHALL BE MAINTAINED ON A DAILY BASIS, INCLUDING BUT NOT LIMITED TO REMOVAL AND DISPOSAL OF ACCUMULATED SOILS, CLEANING DEVICES, AND REPAIR OF DAMAGED DEVICES OR REPLACEMENT WITH NEW.
- PROVIDE INLET PROTECTION ON ALL STORM DRAIN INLETS OR CULVERTS WITHIN 25 FEET OF DISTURBED GROUND.
- USE WATER OR NON-TOXIC DUST PALLIATIVES TO CONTROL DUST.
- MAINTAIN DEVICES AND CORRECT ANY PROBLEMS OCCURRING DUE TO INADEQUATE PROTECTION MEASURES. INSPECT AND REPAIR DEVICES AFTER EACH RAINFALL. REMOVE AND DISPOSE OF SEDIMENT CONTROL DEVICES AFTER STABILIZATION OF SLOPES.
- IF INSPECTION REVEALS EROSION CONTROL MEASURES ARE INSUFFICIENT, IMMEDIATELY IMPLEMENT CORRECTING ACTION. THIS MAY INCLUDE: CHANGING CONSTRUCTION METHODS, INSTALLING ADDITIONAL EROSION CONTROL BMPS, PHASING WORK, AND OTHER CORRECTIVE MEASURES.
- MINIMIZE THE AREA AND TIME PERIOD ERODIBLE SOILS ARE EXPOSED TO STORM WATER. DISTURBED AREAS SHALL BE STABILIZED AS SOON AS PRACTICABLE AFTER DISTURBANCE AND IN ACCORDANCE WITH ALASKA CONSTRUCTION GENERAL PERMIT (ACGP) REQUIREMENTS.
- STABILIZE DISTURBED GROUND AS SOON AS POSSIBLE. UNSTABILIZED SURFACES MUST BE TEMPORARILY STABILIZED WITH BONDED FIBER MATRIX, SEEDING, ROLLED EROSION CONTROL PRODUCT (RECP), OR OTHER EFFECTIVE MEASURES. THE CONTRACTOR IS RESPONSIBLE FOR MAINTAINING EROSION AND SEDIMENT CONTROL UNTIL PROJECT WORK AREAS ARE PAVED AND SEEDS AS AREAS HAVE ACHIEVED 70% VEGETATIVE COVER.
- MATERIAL TRACKED BY CONSTRUCTION EQUIPMENT MUST BE SWEEPED BACK INTO THE PROJECT AREA OR PICKED UP BY A VACUUM TRUCK.

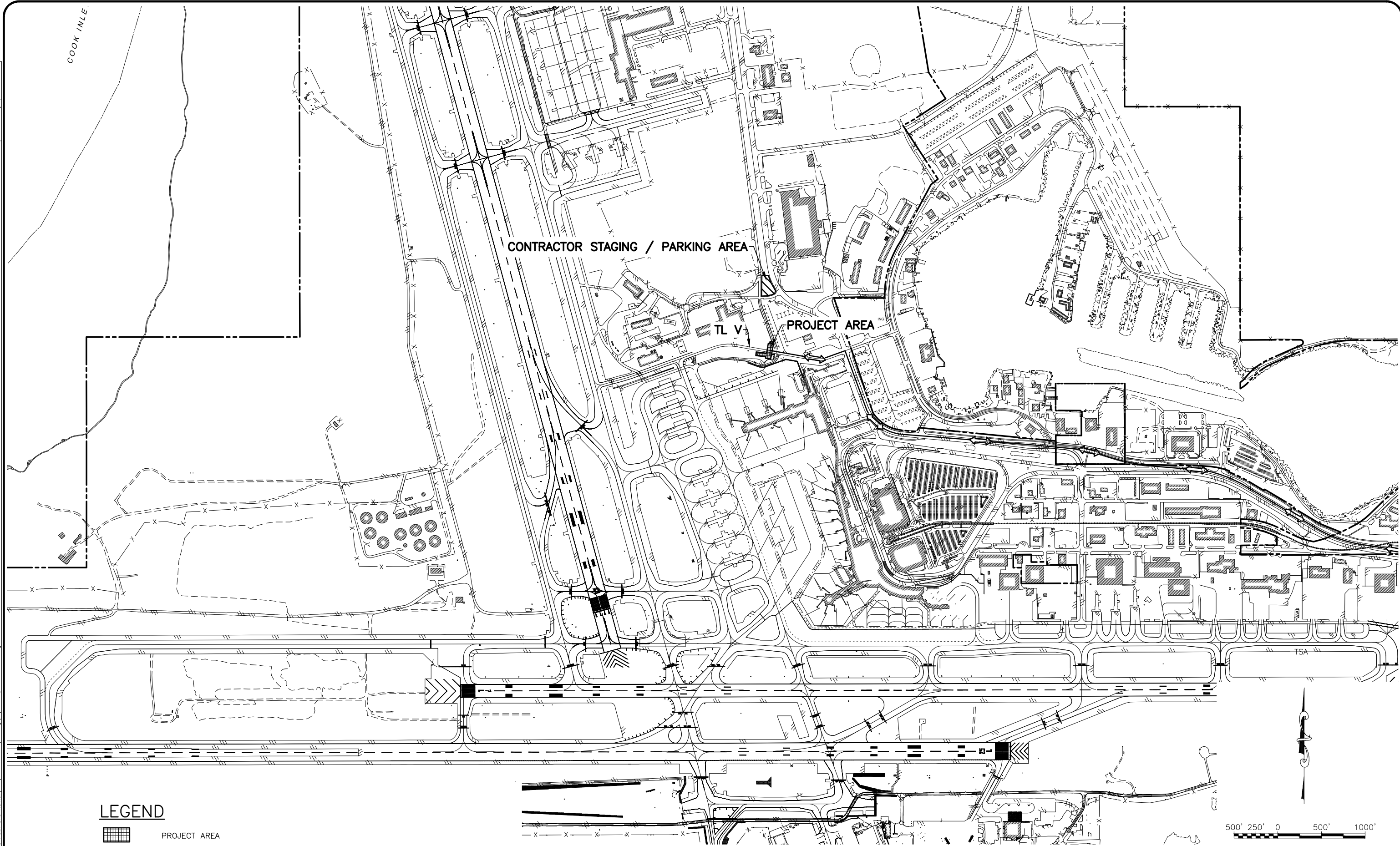
STANTEC CONSULTING SERVICES INC.
3900 C ST SUITE 902
ANCHORAGE, AK 99503-2245
(907) 276-4245
CERTIFICATION OF AUTHORIZATION
#126386

BY	DATE	REVISION

STATE OF ALASKA
DEPARTMENT OF TRANSPORTATION
AND PUBLIC FACILITIES
CENTRAL REGION
4111 AVIATION AVE., ANCHORAGE ALASKA 99502
PHONE (907) 269-0590

TED STEVENS ANCHORAGE
ANCHORAGE, ALASKA
ANC TAXILANE V GATE RECONSTRUCTION
PROJECT No. CFAPT01278
AIP NUMBER 3-02-0016-XXX-2025
EROSION AND SEDIMENT CONTROL
COVER SHEET

DATE:
02/07/2025
SHEET:
AA1 of AA3



LEGEND

- PROJECT AREA
- CONTRACTOR STAGING / PARKING AREA
- PROPOSED HAUL ROUTE

STANTEC CONSULTING SERVICES INC.
3900 C ST SUITE 902
ANCHORAGE, AK 99503-2245
(907) 276-4245
CERTIFICATION OF AUTHORIZATION
#126386

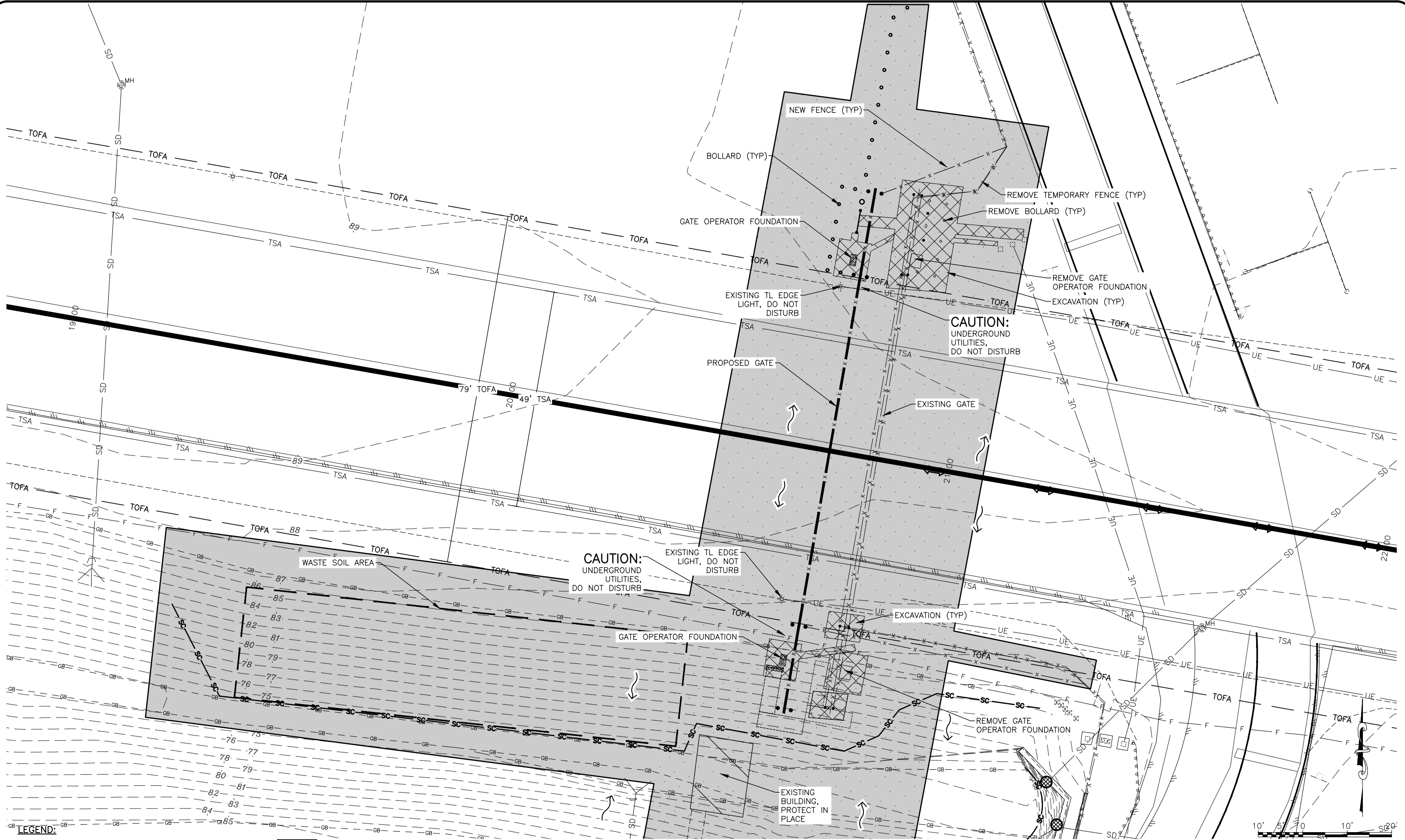
BY	DATE	REVISION

STATE OF ALASKA
DEPARTMENT OF TRANSPORTATION
AND PUBLIC FACILITIES
CENTRAL REGION
4111 AVIATION AVE., ANCHORAGE ALASKA 99502
PHONE (907) 269-0590

TED STEVENS ANCHORAGE
ANCHORAGE, ALASKA
ANC TAXILANE V GATE RECONSTRUCTION
PROJECT No. CFAPT01278
AIP NUMBER 3-02-0016-XXX-2025
EROSION AND SEDIMENT CONTROL OVERVIEW

DATE:
02/07/2025
SHEET:
AA2 of AA3

2/10/2025, 12:34 PM
Date Revised: ESDP
Layout Name: L:\2023\01718A drawing\01278-ESDP.dwg
Designed By: LEN
Drawn By: JAG
Checked By: EUG



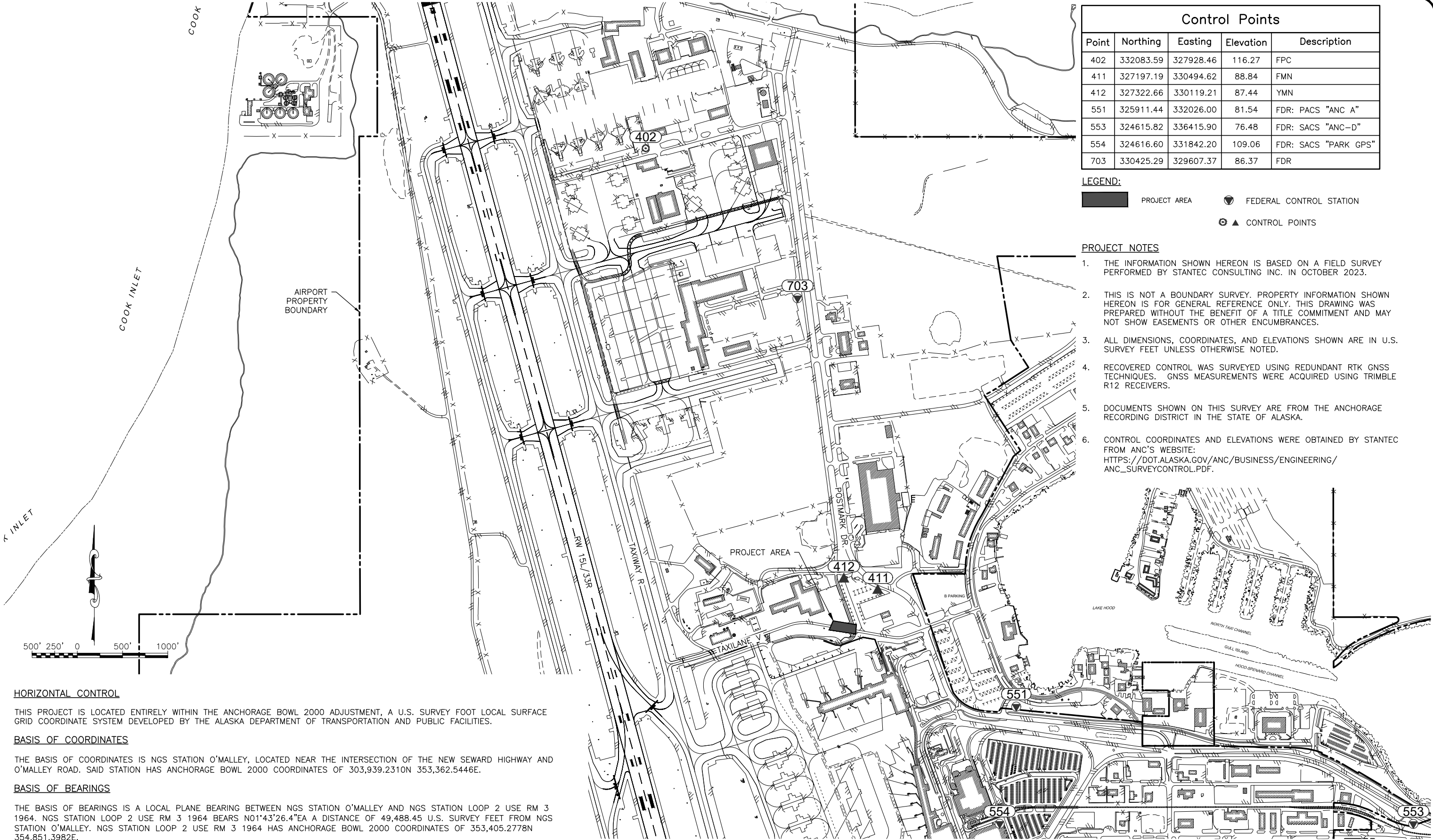
STANTEC CONSULTING SERVICES INC.
3900 C ST SUITE 902
ANCHORAGE, AK 99503-2245
(907) 276-4245
CERTIFICATION OF AUTHORIZATION
#126386

BY	DATE	REVISION

STATE OF ALASKA
DEPARTMENT OF TRANSPORTATION
AND PUBLIC FACILITIES
CENTRAL REGION
4111 AVIATION AVE., ANCHORAGE ALASKA 99502
PHONE (907) 269-0590

TED STEVENS ANCHORAGE
ANCHORAGE, ALASKA
ANC TAXILANE V GATE RECONSTRUCTION
PROJECT No. CFAPT01278
AIP NUMBER 3-02-0016-XXX-2025
EROSION AND SEDIMENT CONTROL PLAN

DATE: 02/07/2025
SHEET: AA3 OF AA3



Control Points

Point	Northing	Easting	Elevation	Description
402	332083.59	327928.46	116.27	FPC
411	327197.19	330494.62	88.84	FMN
412	327322.66	330119.21	87.44	YMN
551	325911.44	332026.00	81.54	FDR: PACS "ANC A"
553	324615.82	336415.90	76.48	FDR: SACS "ANC-D"
554	324616.60	331842.20	109.06	FDR: SACS "PARK GPS"
703	330425.29	329607.37	86.37	FDR

LEGEND:

- PROJECT AREA
- FEDERAL CONTROL STATION
- CONTROL POINTS

PROJECT NOTES

- THE INFORMATION SHOWN HEREON IS BASED ON A FIELD SURVEY PERFORMED BY STANTEC CONSULTING INC. IN OCTOBER 2023.
- THIS IS NOT A BOUNDARY SURVEY. PROPERTY INFORMATION SHOWN HEREON IS FOR GENERAL REFERENCE ONLY. THIS DRAWING WAS PREPARED WITHOUT THE BENEFIT OF A TITLE COMMITMENT AND MAY NOT SHOW EASEMENTS OR OTHER ENCUMBRANCES.
- ALL DIMENSIONS, COORDINATES, AND ELEVATIONS SHOWN ARE IN U.S. SURVEY FEET UNLESS OTHERWISE NOTED.
- RECOVERED CONTROL WAS SURVEYED USING REDUNDANT RTK GNSS TECHNIQUES. GNSS MEASUREMENTS WERE ACQUIRED USING TRIMBLE R12 RECEIVERS.
- DOCUMENTS SHOWN ON THIS SURVEY ARE FROM THE ANCHORAGE RECORDING DISTRICT IN THE STATE OF ALASKA.
- CONTROL COORDINATES AND ELEVATIONS WERE OBTAINED BY STANTEC FROM ANC'S WEBSITE: [HTTPS://DOT.ALASKA.GOV/ANC/BUSINESS/ENGINEERING/ANC_SURVEYCONTROL.PDF](https://dot.alaska.gov/anc/business/engineering/anc_surveycontrol.pdf).

HORIZONTAL CONTROL

THIS PROJECT IS LOCATED ENTIRELY WITHIN THE ANCHORAGE BOWL 2000 ADJUSTMENT, A U.S. SURVEY FOOT LOCAL SURFACE GRID COORDINATE SYSTEM DEVELOPED BY THE ALASKA DEPARTMENT OF TRANSPORTATION AND PUBLIC FACILITIES.

BASIS OF COORDINATES

THE BASIS OF COORDINATES IS NGS STATION O'MALLEY, LOCATED NEAR THE INTERSECTION OF THE NEW SEWARD HIGHWAY AND O'MALLEY ROAD. SAID STATION HAS ANCHORAGE BOWL 2000 COORDINATES OF 303,939.2310N 353,362.5446E.

BASIS OF BEARINGS

THE BASIS OF BEARINGS IS A LOCAL PLANE BEARING BETWEEN NGS STATION O'MALLEY AND NGS STATION LOOP 2 USE RM 3 1964. NGS STATION LOOP 2 USE RM 3 1964 BEARS N01°43'26.4"E A DISTANCE OF 49,488.45 U.S. SURVEY FEET FROM NGS STATION O'MALLEY. NGS STATION LOOP 2 USE RM 3 1964 HAS ANCHORAGE BOWL 2000 COORDINATES OF 353,405.2778N 354,851.3982E.

VERTICAL CONTROL

THE PROJECT VERTICAL DATUM IS MSL 1929 NGVD, MOA 1972 ADJUSTMENT ELEVATION OF POINT 551, STATION "ANC A" FIXED AT 81.54 U.S. SURVEY FEET PER ALASKA DOT RECORD OF SURVEY 2015-80 ANCHORAGE RECORDING DISTRICT.

TRANSLATION PARAMETERS

TO CONVERT THE LOCAL COORDINATES TO NAD83(92) STATE PLANE FOOT COORDINATES, TRANSLATE USING +2,296,868.6878N +1,312,517.4905E AND SCALE USING 0.9998910192.

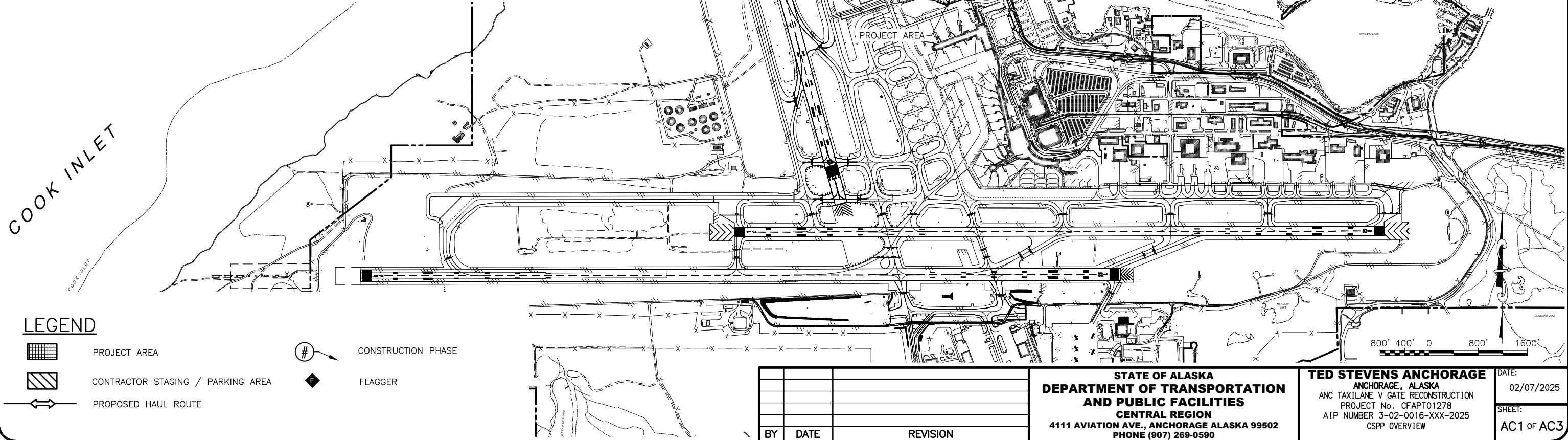
			STATE OF ALASKA DEPARTMENT OF TRANSPORTATION AND PUBLIC FACILITIES CENTRAL REGION 4111 AVIATION AVE., ANCHORAGE ALASKA 99502 PHONE (907) 269-0590		TED STEVENS ANCHORAGE ANCHORAGE, ALASKA ANC TAXILANE V GATE RECONSTRUCTION PROJECT No. CFAPT01278 SURVEY CONTROL		DATE: 02/07/2025 SHEET: AB1 of AB1
BY	DATE	REVISION					

2/10/2025, 12:34 PM
Date Reviset:
Layout Name:
File Path and Name: U:\2023\01718A drawing\A sheets\01278-CSPP.dwg

2/10/2025, 12:34 PM
Designed By: LEN
Drawn By: JAG
Checked By: JAG

GENERAL SAFETY REQUIREMENTS:

- SEE APPENDIX C OF THE SPECIFICATIONS FOR THE CONSTRUCTION SAFETY AND PHASING PLAN (CSPP) REQUIREMENTS. THE CONTRACTOR SHALL COMPLY WITH THE SAFETY REQUIREMENTS AS REQUIRED IN THE CSPP. ALL SAFETY RELATED WORK SHALL BE SUBSIDIARY TO THE CONTRACT AND NO ADDITIONAL PAYMENT WILL BE MADE.
- SUBMIT A SAFETY PLAN COMPLIANCE DOCUMENT (SPCD), PER FAA AC 150/5370-2G, TO THE ENGINEER FOR REVIEW AND APPROVAL PRIOR TO ISSUANCE OF A NOTICE TO PROCEED. IF THE SPCD DIFFERS FROM WHAT IS SHOWN OR IF SUBSEQUENT CHANGES ARE MADE, SUBMIT A REVISION TO THE ENGINEER FOR REVIEW AND APPROVAL.
- CONSTRUCTION SHALL BE PLANNED TO MINIMIZE DISTURBANCE TO AIRCRAFT OPERATIONS. COORDINATE CLOSURES WITH AIRPORT OPERATIONS THROUGH THE ENGINEER.
- ALL CONSTRUCTION VEHICLES AND EQUIPMENT SHALL OPERATE A FLASHING YELLOW BEACON WHEN WORKING ON THE AIRPORT.
- A LOCK OUT AND TAG OUT (LOTO) OF ALL AIRFIELD ELECTRICAL CIRCUITS MUST BE IN PLACE PRIOR TO NEW SITE ELECTRICAL CONSTRUCTION (TYING INTO EXISTING ELECTRICAL SYSTEMS). COORDINATE ALL BUILDING POWER OUTAGES CAUSED BY DISCONNECTIONS, CIRCUIT CHANGES, OR OTHER WORK WITH THE ENGINEER AND AIRPORT OPERATIONS PER GCP 50 AND GCP 60. PROVIDE A MINIMUM OF 48 HOURS NOTICE FOR REQUIRED LOCKOUTS TO ALLOW AIRPORT MAINTENANCE TO ENSURE PERSONNEL ARE AVAILABLE. SEE TSAIA LOTO POLICY FOR REQUIREMENTS.
- PROVIDE FLAGGERS WITH AIRPORT RADIOS TO COMMUNICATE WITH OPERATING AIRCRAFT. AIRCRAFT HAVE THE RIGHT OF WAY. CLEAR SAFETY AREAS AND OBJECT FREE AREAS AT ANYTIME DIRECTED BY THE FLAGGER OR ENGINEER.
- WORKERS AND EQUIPMENT MUST CLEAR TL OBJECT FREE AREA IF THERE IS AN AIRCRAFT TAXIING THROUGH THE CONSTRUCTION AREA. IF WORKERS AND EQUIPMENT MUST REMAIN IN OBJECT FREE AREA, WING WALKERS WILL BE REQUIRED.
- CONTRACTOR HAULING OPERATIONS ARE LIMITED TO THE HAUL ROUTES SHOWN ON THE PLANS. FOLLOWING CONSTRUCTION COMPLETION, THE CONTRACTOR SHALL RESTORE THE HAUL ROUTES TO THEIR ORIGINAL CONDITION.
- REPORT ANY SAFETY ISSUES TO THE ENGINEER AND AIRPORT OPERATIONS UPON DISCOVERY. THE CONTRACTOR MUST TAKE IMMEDIATE ACTION TO RESOLVE SAFETY ISSUES AS DIRECTED.
- IMMEDIATELY REMOVE ALL FOREIGN OBJECT DEBRIS (FOD) FROM ACTIVE SURFACES UPON DISCOVERY OR NOTIFICATION. FAILURE TO REMOVE FOD MAY BE CONSIDERED A SAFETY VIOLATION AS DETERMINED BY THE ENGINEER. STATION ADEQUATE CLEANING EQUIPMENT AT THE JOB SITE FOR IMMEDIATE CLEANUP OF ANY MATERIAL SPILLS ON ALL ACTIVE RUNWAY, TAXIWAY, AND APRON SURFACES.
- DAMAGE TO FAA FACILITIES, INCLUDING POWER DISRUPTION, SHALL BE IMMEDIATELY REPAIRED IN A MANNER ACCEPTABLE TO FAA AT THE CONTRACTOR'S EXPENSE.
- OTHER CONTRACTORS OR UTILITY COMPANIES MAY BE WORKING IN THE SAME PROJECT AREA OR IN THE VICINITY DURING THE PROGRESS OF THIS WORK. COORDINATE WORK WITH ALL OTHER CONTRACTORS OR UTILITY COMPANIES WORKING AT OR NEAR THE AIRPORT.
- WORK AREAS SHOWN FOR EACH PHASE INCLUDE ALL WORK TO BE DONE BY THE CONTRACTOR, SUBCONTRACTORS, AND UTILITY CONTRACTORS.
- THE CONTRACTOR SHALL VACATE THE STAGING AREAS AND DISPOSAL SITES BY OCTOBER 15, 2025, UNLESS OTHERWISE DIRECTED BY THE ENGINEER IN WRITING.



CONSTRUCTION PHASING SCHEDULE NOTES:

- WORK WILL BE COMPLETED IN A SINGLE PHASE WITH AN ESTIMATED DURATION OF 40 DAYS.
- TL V MAY BE CLOSED FOR A MAXIMUM OF 2 DAYS AT A TIME. CONTRACTOR MUST NOTIFY AIRPORT OPERATIONS A MINIMUM OF 1 WEEK PRIOR TO TL CLOSURE.
- DEMOLITION OF THE EXISTING GATE, FENCE, AND ASSOCIATED EQUIPMENT MAY NOT BEGIN UNTIL ALL COMPONENTS OF THE NEW GATE, FENCE, AND EQUIPMENT ARE ON SITE.
- CONTRACTOR MUST SCHEDULE A MEETING WITH ANC OPERATIONS, SECURITY AND WILDLIFE PRIOR TO STARTING WORK TO REVIEW GATE SECURITY REQUIREMENTS.

CONSTRUCTION SEQUENCE			
SEQUENCE #	CONSTRUCTION TASKS	GATE SECURITY	DURATION
1	INSTALL NEW GATE AND ALL ASSOCIATED EQUIPMENT, EXCEPT FOR UNDERGROUND ELECTRICAL WHERE IT CONFLICTS WITH OLD GATE EQUIPMENT	EXISTING GATE MUST REMAIN FUNCTIONAL	28 DAYS
2	DEMOLISH EXISTING GATE AND ALL ASSOCIATED EQUIPMENT. INSTALL BURIED POWER AND COMMUNICATIONS CONDUIT/CABLING TO NEW GATE	NEW GATE WILL BE PUSH BUTTON OPERATED UNTIL PERMANENT POWER AND COMMUNICATIONS ARE CONNECTED. CONTRACTOR FLAGGERS WILL OPERATE THE GATE MANUALLY DURING THE DAY (7AM-7PM). AT NIGHT, PILOTS WILL CONTACT ANC OPERATIONS AT (907) 266-2600 FOR GATE ACCESS FROM 7PM-7AM. OPERATIONS STAFF WILL OPEN/CLOSE THE GATE DURING NIGHTTIME HOURS.	7 DAYS
3	REMAINDER OF PROJECT WORK	NEW GATE MUST BE FUNCTIONAL	5 DAYS

HAUL ROUTE NOTES:

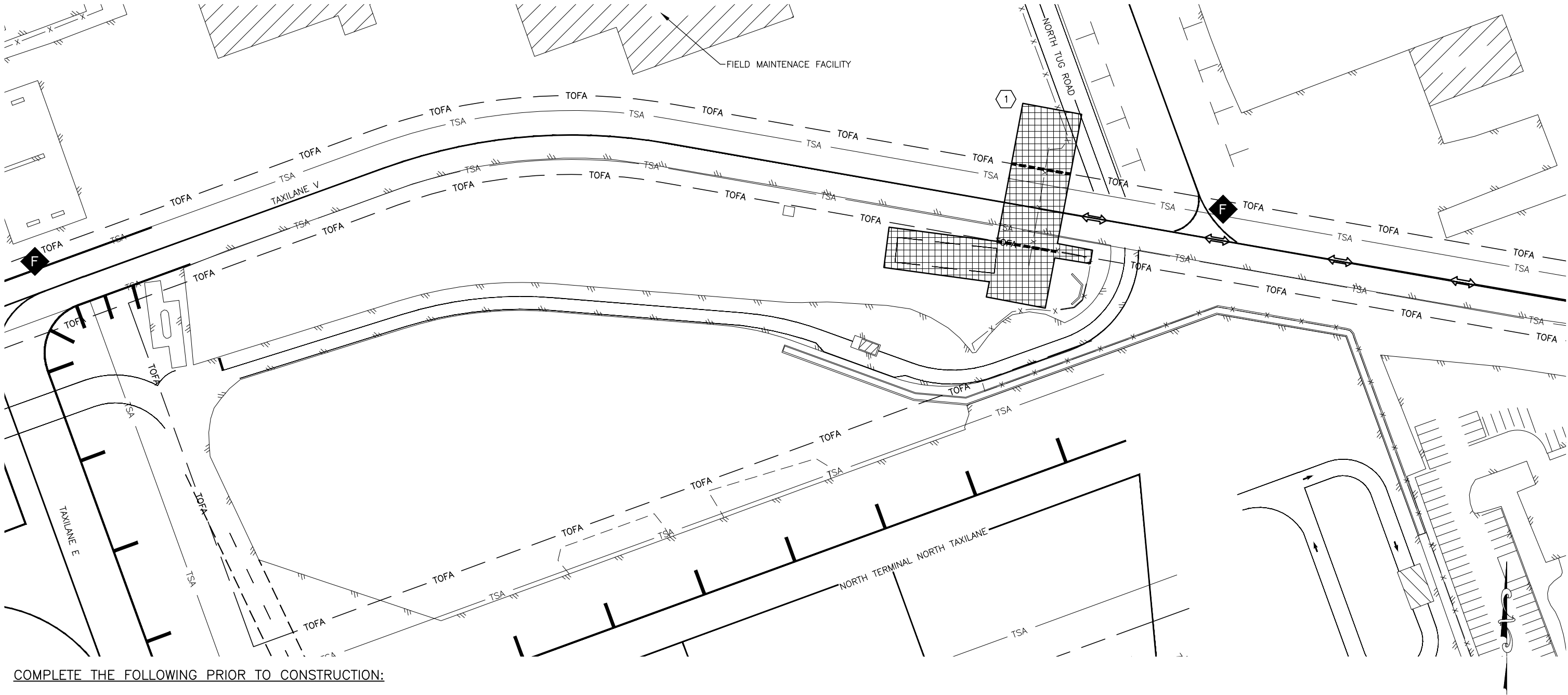
- SUBMIT A TRAFFIC CONTROL PLAN TO THE ENGINEER FOR APPROVAL FROM ANC AIRPORT OPERATIONS AND ANC ENGINEERING PRIOR TO BEGINNING HAULING OPERATIONS.
- THE HAUL ROUTE IS TO BE USED BY THE CONTRACTOR TO ACCESS THE PROJECT AND STAGING AREA ON ANC PROPERTY. ALTERNATE HAUL ROUTES MAY NOT BE USED WITHOUT APPROVAL FROM THE ENGINEER. FOLLOWING CONSTRUCTION COMPLETION, THE CONTRACTOR IS REQUIRED TO RESTORE THE HAUL ROUTE TO ITS ORIGINAL CONDITION. TEMPORARY ACCESS ROUTES MUST BE REMOVED, AND THE GROUND RESTORED TO ITS ORIGINAL CONDITION.
- HAUL ROUTES SHALL BE SWEEPED AND KEPT CLEAR OF DEBRIS AT ALL TIMES AND AS DIRECTED BY THE ENGINEER.
- UNCOVERED STOCKPILED MATERIAL WILL NOT BE PERMITTED WITHIN THE PROJECT LIMITS.
- CONTRACTOR MUST NOT IMPEDE ANY AIR OR VEHICULAR TRAFFIC INTO OR OUT OF GATE N10 OR THE NORTH TUG ROAD.

BY	DATE	REVISION

STATE OF ALASKA
DEPARTMENT OF TRANSPORTATION
AND PUBLIC FACILITIES
CENTRAL REGION
4111 AVIATION AVE., ANCHORAGE ALASKA 99502
PHONE (907) 269-0590

TED STEVENS ANCHORAGE
ANCHORAGE, ALASKA
ANC TAXILANE V GATE RECONSTRUCTION
PROJECT No. CFAPT01278
AIP NUMBER 3-02-0016-XXX-2025
CSPP OVERVIEW

DATE:
02/07/2025
SHEET:
AC1 of AC3



COMPLETE THE FOLLOWING PRIOR TO CONSTRUCTION:

- SET UP FLAGGERS IN POSITION WITH AIRPORT RADIOS.
- INSTALL APPROPRIATE BEST MANAGEMENT PRACTICES (BMPS) PER CONTRACTORS APPROVED STORM WATER POLLUTION PREVENTION PLAN (SWPPP) AS DEFINED IN CONTRACT SPECIFICATION P-641.
- PLACE HAZARD MARKER BARRIERS TO DESIGNATE CONSTRUCTION AREA.

COMPLETE THE FOLLOWING DURING CONSTRUCTION:

- SAWCUT AND REMOVE EXISTING ASPHALT PAVEMENT FOR GATE CONTROLLER FOUNDATIONS, ELECTRICAL TRENCHES, AND EXCAVATE AS NEEDED FOR NEW INFRASTRUCTURE
- INSTALL NEW GATE POST FOUNDATIONS AND POSTS, OPERATOR FOUNDATIONS, GATE OPERATORS, FENCE, BOLLARDS, AND BURIED POWER AND COMMUNICATIONS CONDUIT/CABLING.
- PROVIDE TEMPORARY POWER TO NEW GATE FOR USE OF MANUAL PUSH BUTTON OPENING OF EACH NEW GATE PANEL
- DEMOLISH ORIGINAL TL V GATE AND ASSOCIATED INFRASTRUCTURE.
- CONNECT POWER AND COMMUNICATIONS TO NEW GATE.
- BACKFILL, GRADE, COMPACT, PAVE, AND PAINT IN THE AREAS WHERE PAVEMENT OR MARKINGS WERE REMOVED.






COMPLETE THE FOLLOWING AFTER CONSTRUCTION:

- REMOVE HAZARD MARKER BARRIERS
- REMOVE BMPS

TSA WIDTH		
TAXIWAY/TAXILANE	TDG	WIDTH (FT)
TAXILANE V (EAST OF TW E)	ADG I	49'
TAXILANE V (WEST OF TW E)	ADG I	49'

TOFA WIDTH		
TAXIWAY/TAXILANE	ADG	WIDTH (FT)
TAXILANE V (EAST OF TW E)	ADG I	79'
TAXILANE V (WEST OF TW E)	ADG I	89'

LEGEND

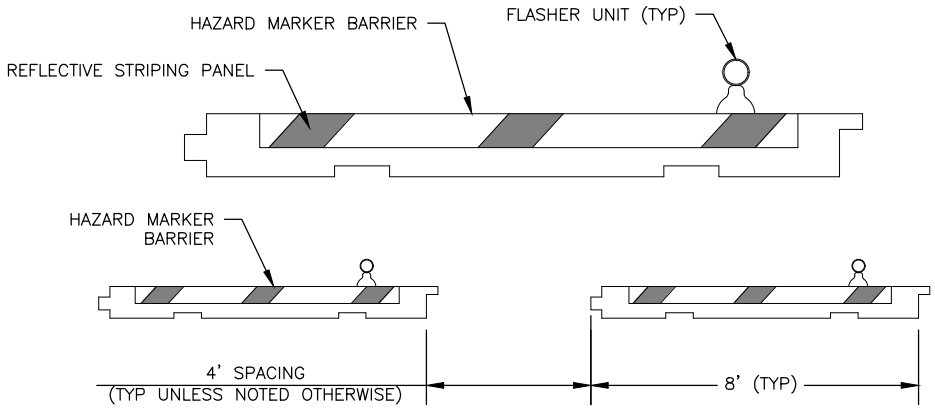
-  WORK AREA
-  CONSTRUCTION PHASE
-  FLAGGER
-  HAZARD MARKER BARRIER
-  PROPOSED HAUL ROUTE

BY	DATE	REVISION

STATE OF ALASKA
DEPARTMENT OF TRANSPORTATION
AND PUBLIC FACILITIES
CENTRAL REGION
4111 AVIATION AVE., ANCHORAGE ALASKA 99502
PHONE (907) 269-0590

TED STEVENS ANCHORAGE
ANCHORAGE, ALASKA
ANC TAXILANE V GATE RECONSTRUCTION
PROJECT No. CFAPT01278
AIP NUMBER 3-02-0016-XXX-2025
CSPP PHASE 1

DATE:
02/07/2025
SHEET:
AC2 of AC3



NOTES:

- 1. PLACE BARRIERS TO SEPARATE CONSTRUCTION AREAS FROM OPEN PORTIONS OF THE AIRPORT.
- 2. DISTANCE BETWEEN BARRIERS CAN BE ADJUSTED FOR CONSTRUCTION TRAFFIC.
- 3. BARRIERS MUST BE LOCATED OUTSIDE THE SAFETY AREA OF ACTIVE TAXIWAYS AND TAXILANES.
- 4. RED FLASHERS MUST BE USED FOR HAZARD MARKER BARRIERS.
- 5. FILL AND MAINTAIN BARRIERS PER SPECIFICATION P-670-3.1.b.
- 6. ESTIMATED QUANTITY BASED ON MOST DEMANDING PHASE.

1
AC3

HAZARD MARKER BARRIER DETAIL

SCALE: NTS