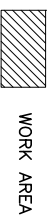


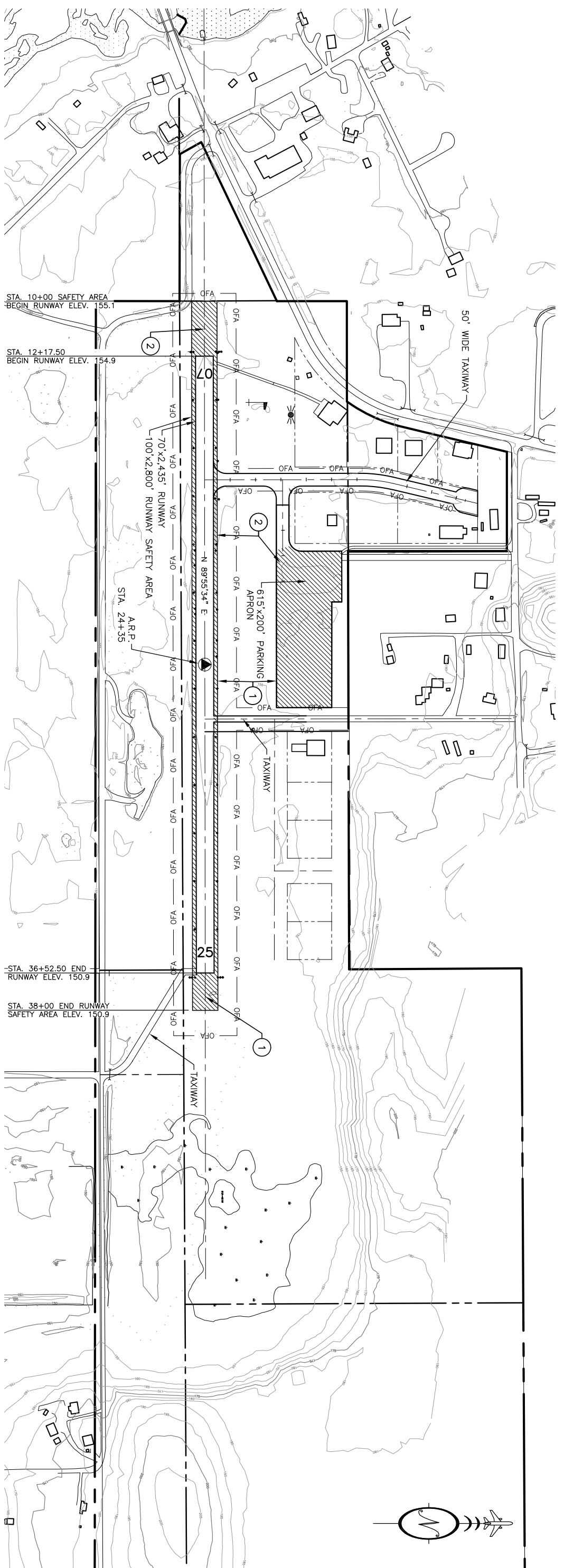
**LEGEND**



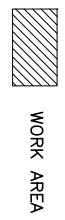
**SCOPE OF WORK**

- ① CRACK SEALING RUNWAYS, TAXIWAYS, AND APRONS. PROJECT IS INCLUSIVE OF ALL TIME, EQUIPMENT, MATERIALS & ETC IN ORDER TO COMPLETE THE WORK.
- ② LAYOUT AND REPAIR PAVEMENT MARKINGS ON RUNWAYS, TAXIWAYS, AND APRONS. REMOVE NON STANDARD PAVEMENT MARKINGS. MAINTAIN PAINTED PAVEMENT MARKINGS ON RUNWAYS, TAXIWAYS, AND APRONS. PER AC 150/5340-1





**LEGEND**

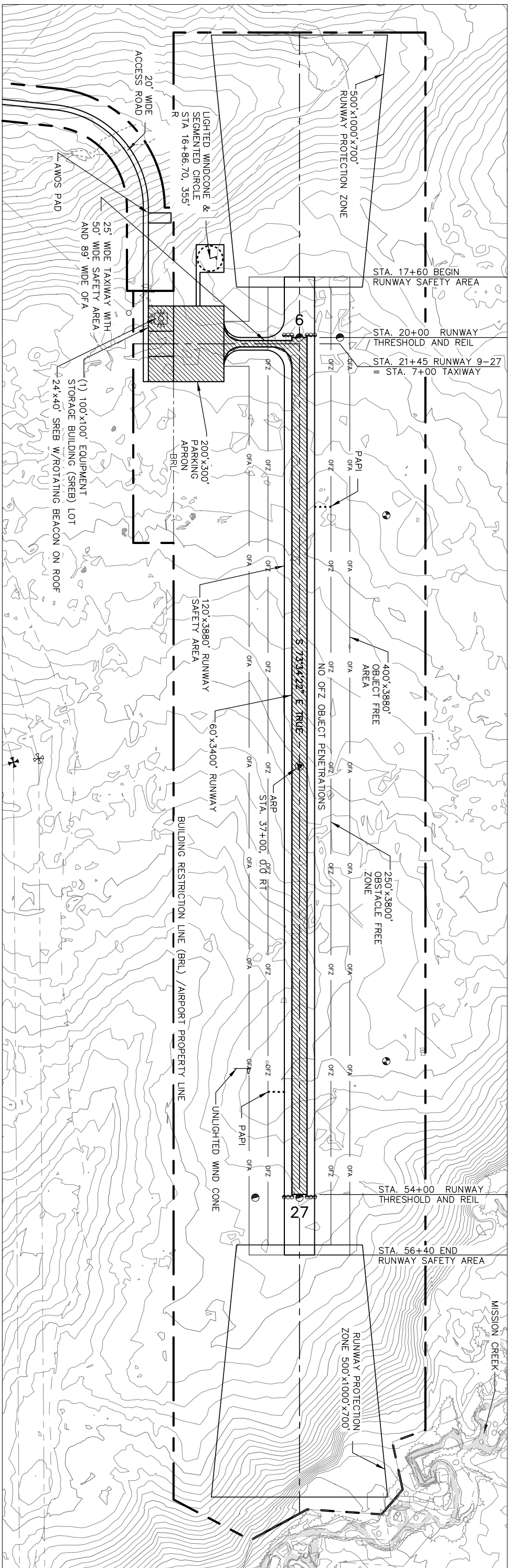


**SCOPE OF WORK**

- ① PURCHASE, HAUL, AND PLACE E-1 TO APRON, SHOULDERS, AND RSA AND COMPACT WITH A VIBRATORY ROLLER.
- ② APPLY DUST PALLIATIVE TO RETAIN THE CRITICAL FINE PARTICLES IN THE CRUSHED SURFACING. TREAT WITH DUST PALLIATIVE FOR FINES PRESERVATION TO BIND AGGREGATE TO PREVENT LOSS OF FINES FOR THE APRON, SHOULDERS, AND RSA SURFACES.



<b>STATE OF ALASKA</b> <b>DEPARTMENT OF TRANSPORTATION</b> <b>AND PUBLIC FACILITIES</b> <b>CENTRAL REGION</b>		<b>BIG LAKE AIRPORT</b> BIG LAKE, ALASKA FFY 2014 NON-PRIMARY AIRPORTS SURFACE PRESERVATION MAINTENANCE ASAS PJ# 57410	DATE: 1/3/2014 SHEET: 1 OF 1
--	--	--	---------------------------------------

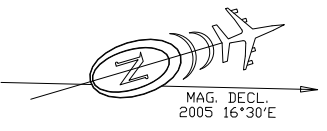
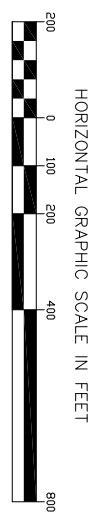


**LEGEND**

WORK AREA

**SCOPE OF WORK**


APPLY DUST PALLIATIVE TO RETAIN THE CRITICAL FINE PARTICLES IN THE CRUSHED SURFACING. TO BE TREATED WITH DUST PALLIATIVE FOR FINES PRESERVATION TO BIND AGGREGATE TO PREVENT LOSS OF FINES FROM THE RUNWAY, TAXIWAY, AND PARTIAL APRON.



<b>STATE OF ALASKA DEPARTMENT OF TRANSPORTATION AND PUBLIC FACILITIES CENTRAL REGION</b>		<b>CHUATHBALUK AIRPORT</b> CHUATHBALUK, ALASKA	
		FFY 2014 NON-PRIMARY AIRPORTS SURFACE PRESERVATION MAINTENANCE AKSAS PJ# 57410	
DATE:	1/8/2014	SHEET:	1 OF 1

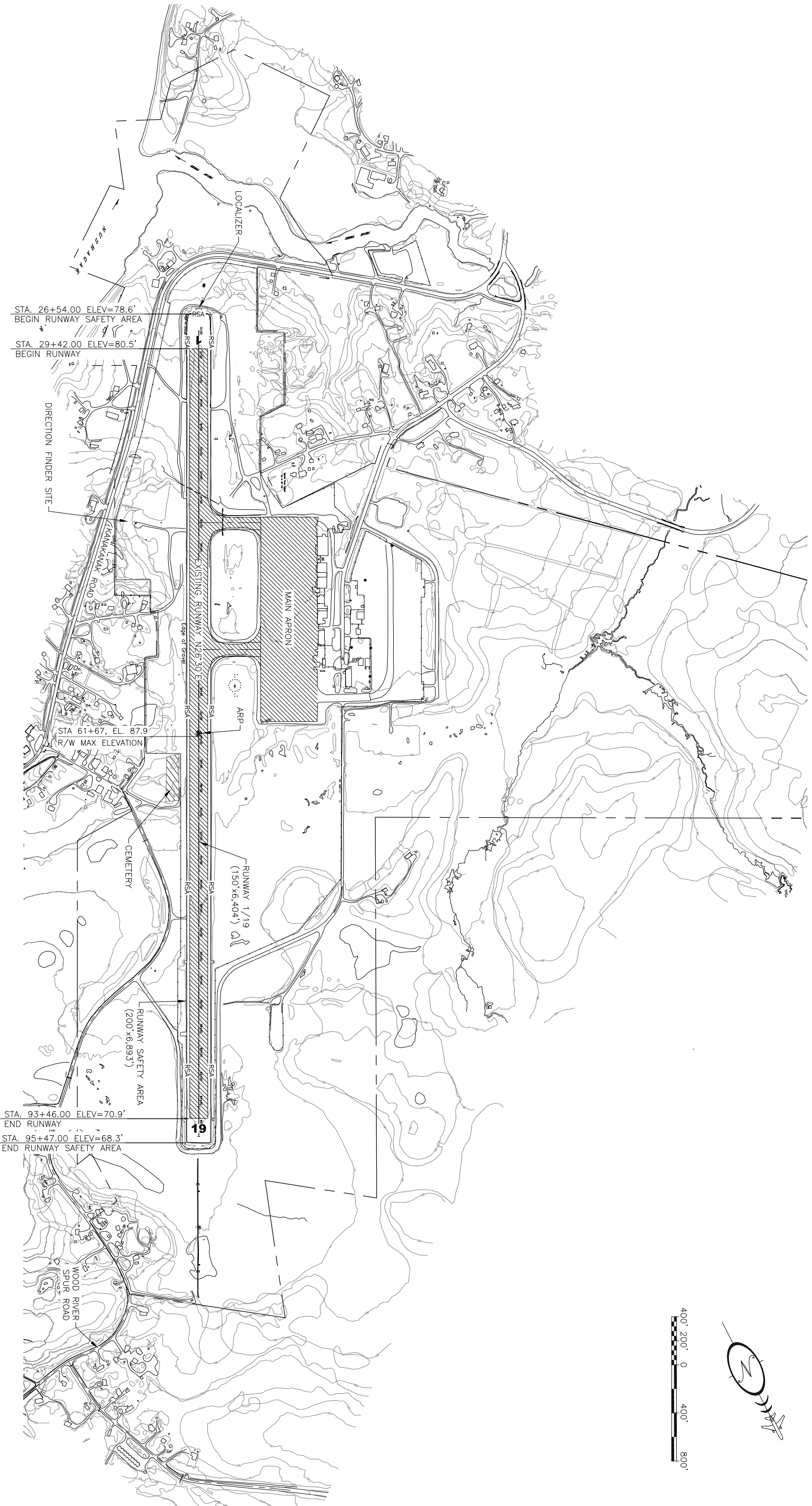


LEGEND

 WORK AREA

SCOPE OF WORK

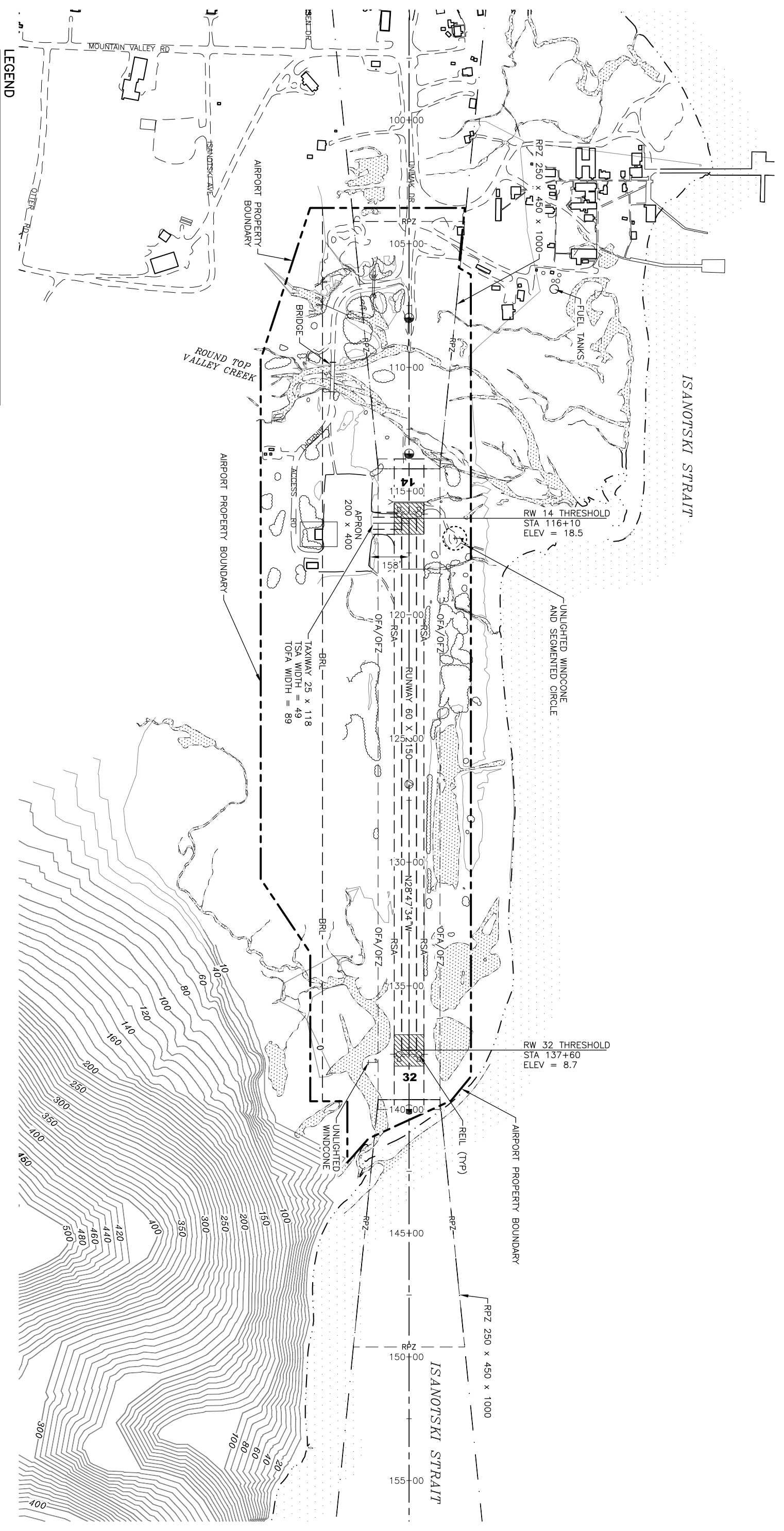
- LAYOUT AND REPAIR PAVEMENT MARKINGS ON RUNWAY, TAXIWAYS, AND APRON. REMOVE NON STANDARD PAVEMENT MARKINGS. MAINTAIN PAINTED PAVEMENT MARKINGS ON RUNWAY, TAXIWAYS, AND APRONS. PER AC 150/5340-1



STATE OF ALASKA  
DEPARTMENT OF TRANSPORTATION  
AND PUBLIC FACILITIES  
CENTRAL REGION

DILLINGHAM AIRPORT  
DILLINGHAM, ALASKA  
FFY 2014 PRIMARY AIRPORTS  
SURFACE PRESERVATION MAINTENANCE  
ASAS PJ# 57410

DATE:  
12/31/2013  
SHEET:  
1 OF  
1

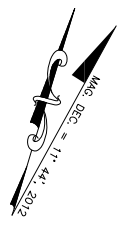


**LEGEND**

WORK AREA

**SCOPE OF WORK**

REPLACE OLD THRESHOLD MARKERS WITH NEW THRESHOLD MARKER  
DESIGN MEETING ITEM P-660 RETRO-REFLECTIVE MARKERS AND CONES.  
REMOVE AND DISPOSE OF ANY EXISTING THRESHOLD PANELS.

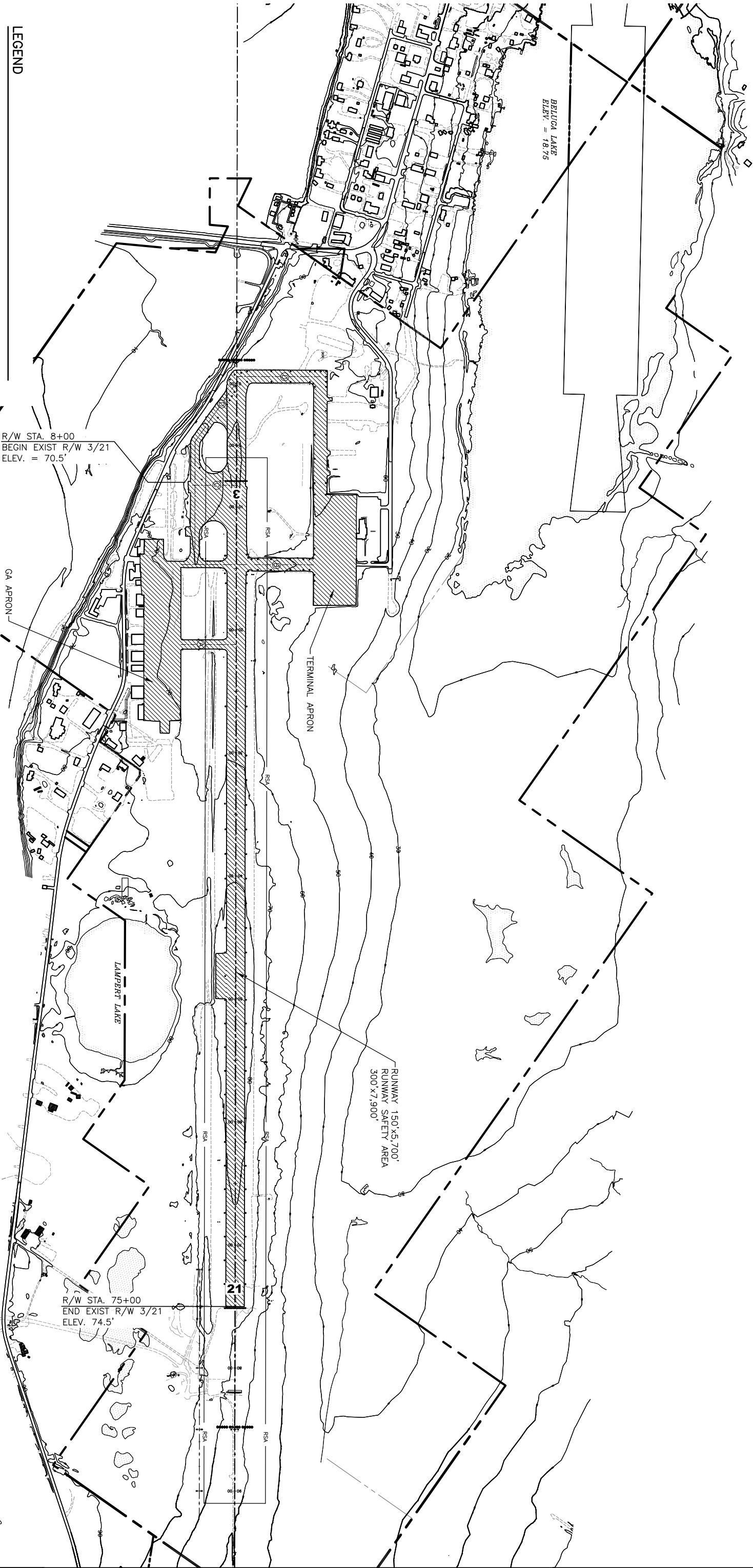


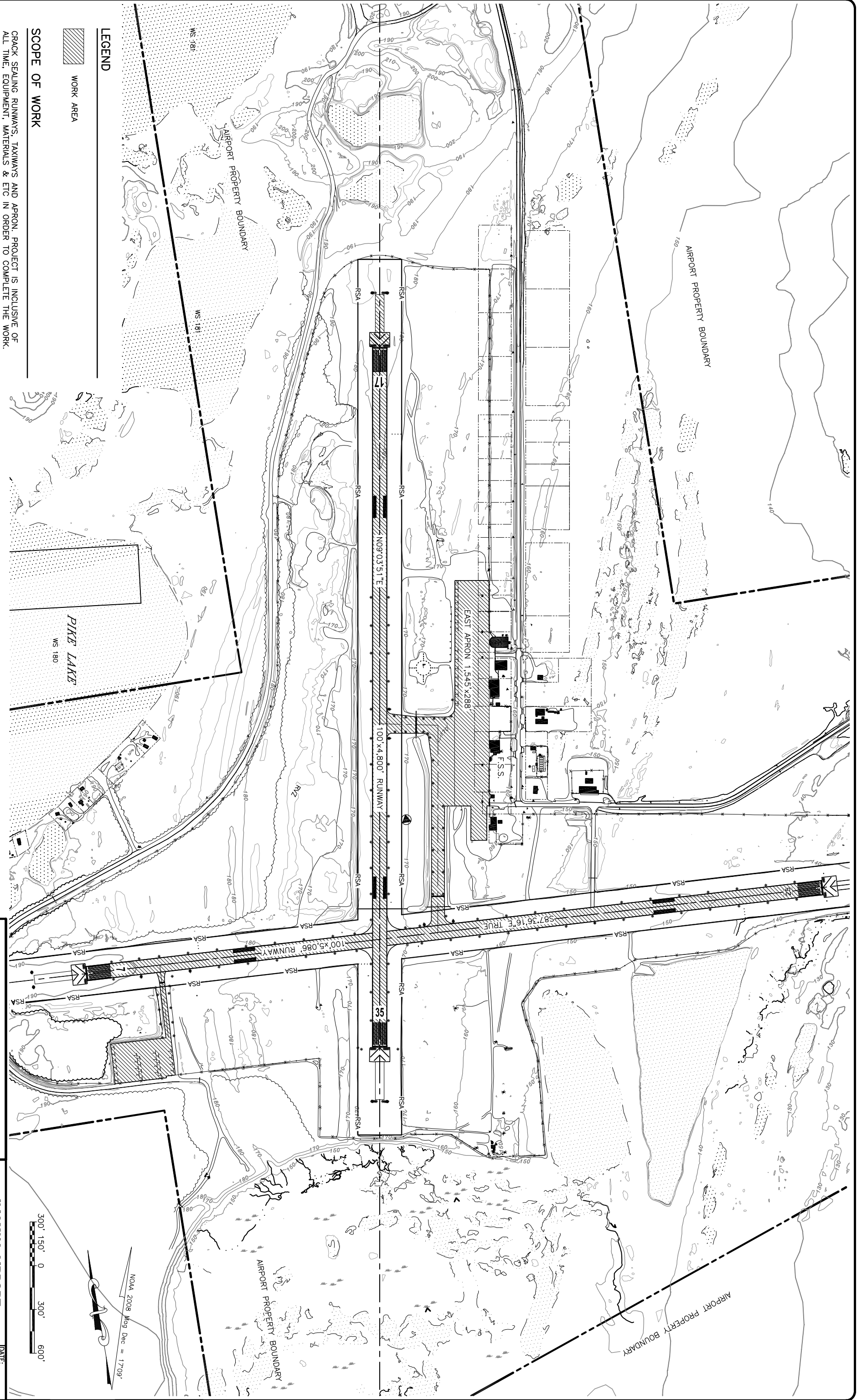
**LEGEND**

 WORK AREA

**SCOPE OF WORK**

LAYOUT AND REPAIR PAVEMENT MARKINGS ON RUNWAY, TAXIWAYS, AND APRONS. REMOVE NON STANDARD PAVEMENT MARKINGS, MAINTAIN PAINTED PAVEMENT MARKINGS ON RUNWAY, TAXIWAYS, AND APRONS. PER AC 150/5340-1.



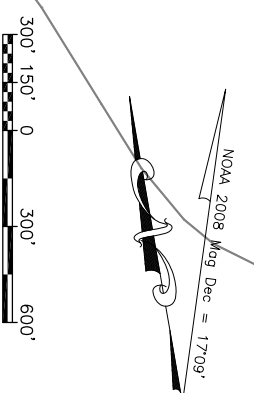


**LEGEND**

WORK AREA

**SCOPE OF WORK**

CRACK SEALING RUNWAYS, TAXIWAYS AND APRON. PROJECT IS INCLUSIVE OF ALL TIME, EQUIPMENT, MATERIALS & ETC IN ORDER TO COMPLETE THE WORK.

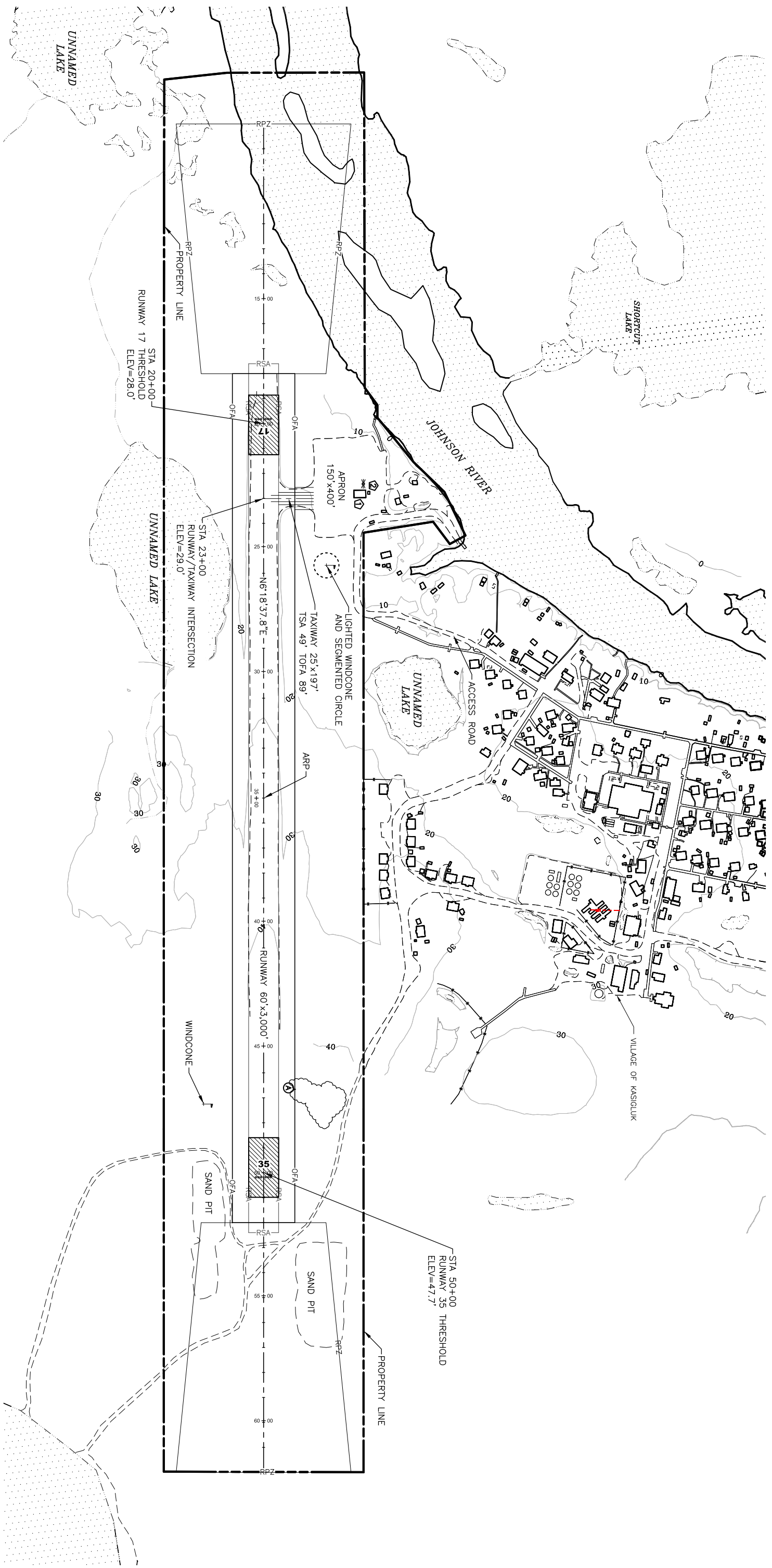


**STATE OF ALASKA**  
**DEPARTMENT OF TRANSPORTATION**  
**AND PUBLIC FACILITIES**  
**CENTRAL REGION**


**ILIAMNA AIRPORT**  
 ILIAMNA, ALASKA

FFY 2014 NON-PRIMARY AIRPORTS  
 SURFACE PRESERVATION MAINTENANCE  
 ASAS PJ# 57410

DATE:  
 1/8/2014  
 SHEET:  
 1 OF 1

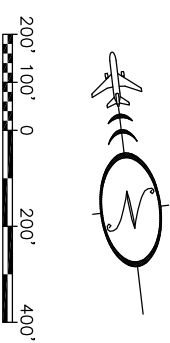


**LEGEND**

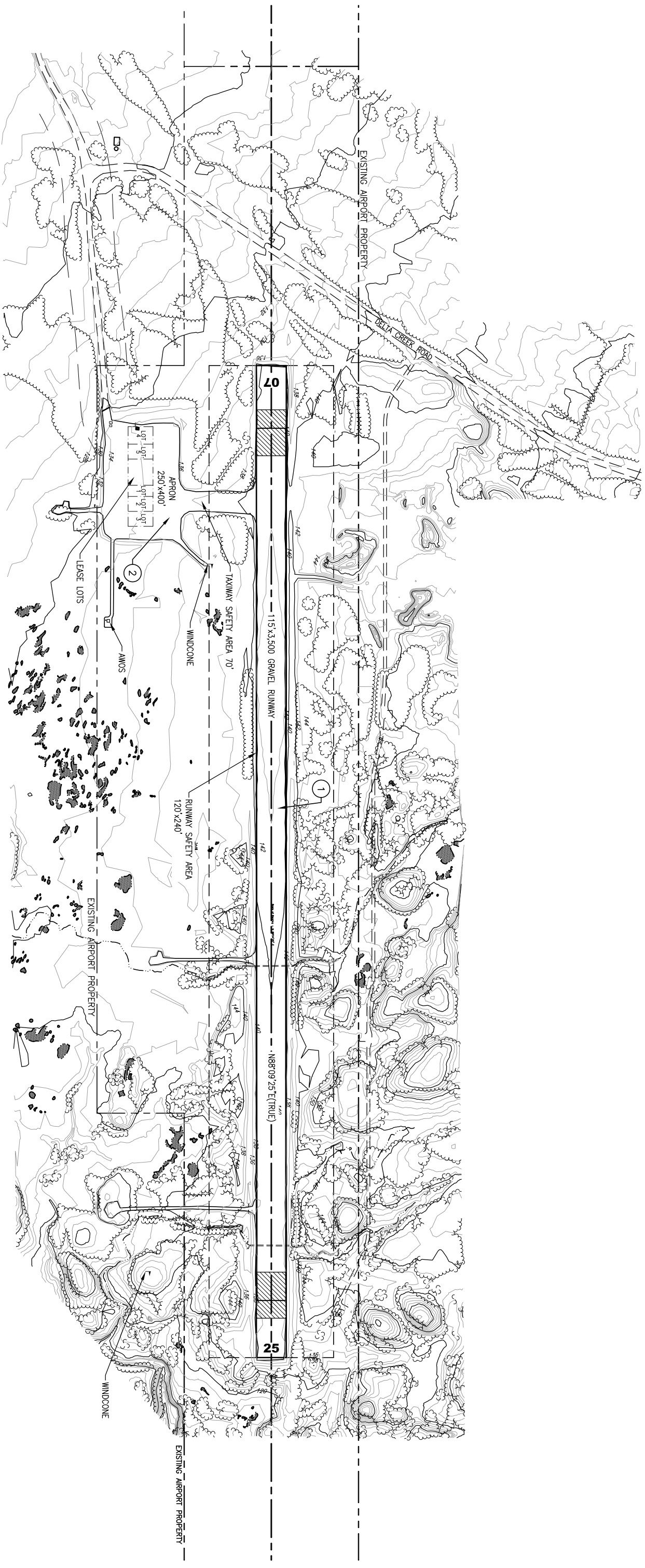
 WORK AREA

**SCOPE OF WORK**


REPLACE OLD THRESHOLD MARKERS WITH NEW THRESHOLD MARKER DESIGN MEETING ITEM P-660 RETRO-REFLECTIVE MARKERS AND CONES. REMOVE AND DISPOSE OF ANY EXISTING THRESHOLD PANELS.



<b>STATE OF ALASKA</b>	
<b>DEPARTMENT OF TRANSPORTATION</b>	
<b>AND PUBLIC FACILITIES</b>	
<b>CENTRAL REGION</b>	
<b>KASIGLUK AIRPORT</b>	DATE: 1/2/2014
KASIGLUK, ALASKA	SHEET: 1 OF 1
FFY 2014 NON-PRIMARY AIRPORTS SURFACE PRESERVATION MAINTENANCE ARSAS PJ# 57410	

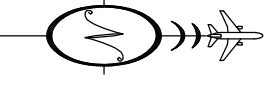


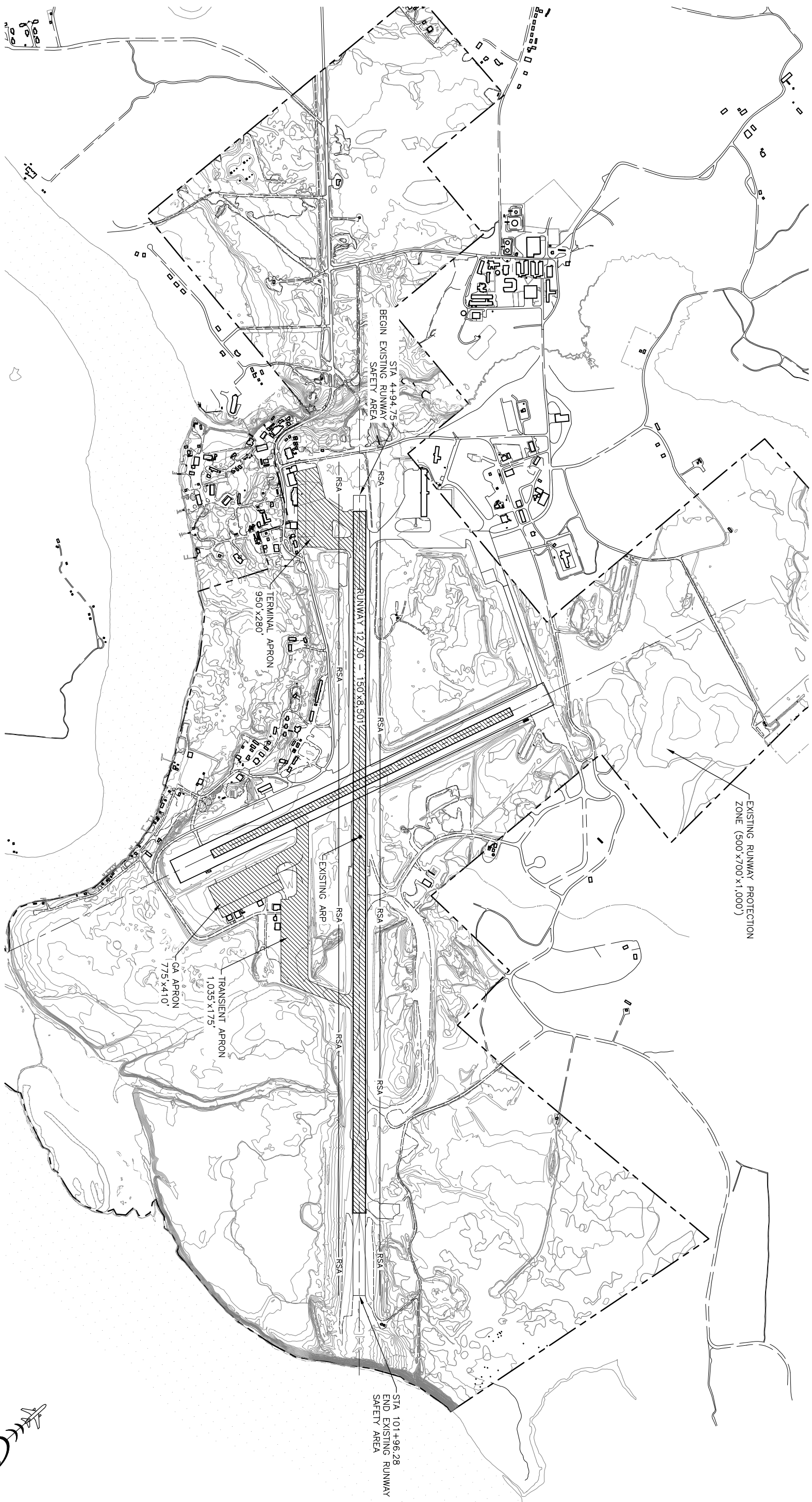
**LEGEND**

 WORK AREA


**SCOPE OF WORK**

REPLACE OLD THRESHOLD MARKERS WITH NEW THRESHOLD MARKER  
 DESIGN MEETING ITEM P-660 RETRO-REFLECTIVE MARKERS AND CONES.  
 REMOVE AND DISPOSE OF ANY EXISTING THRESHOLD PANELS.



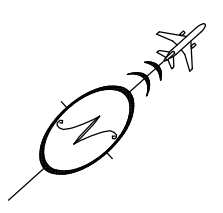


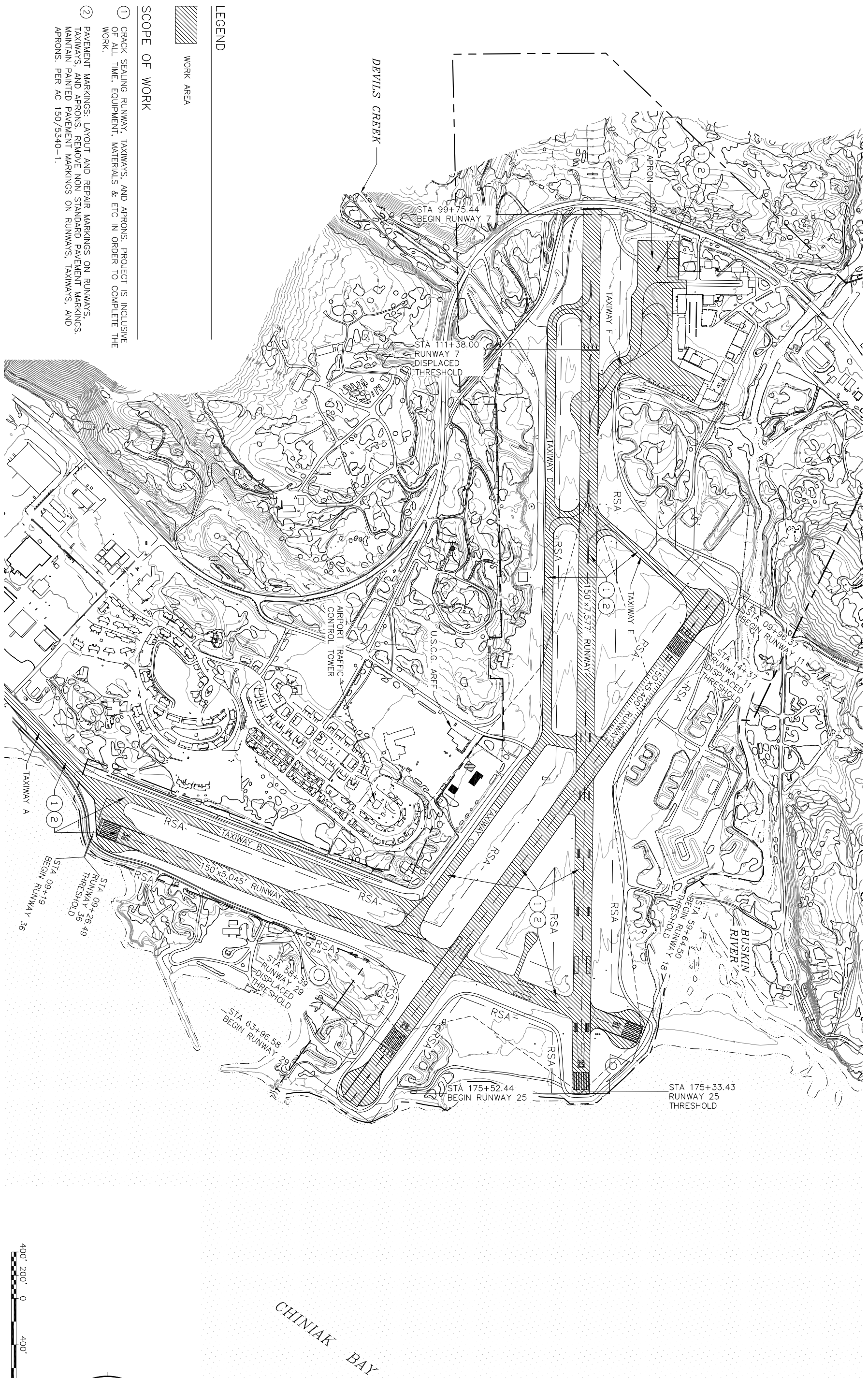
**LEGEND**

 WORK AREA

**SCOPE OF WORK**

LAYOUT AND REPAIR PAVEMENT MARKINGS ON RUNWAYS, TAXIWAYS, AND APRONS. REMOVE NON STANDARD PAVEMENT MARKINGS, MAINTAIN PAINTED PAVEMENT MARKINGS ON RUNWAYS, TAXIWAYS, AND APRONS. PER AC 150/5340-1.



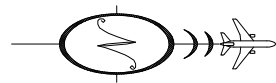


 WORK AREA

LEGEND

SCOPE OF WORK

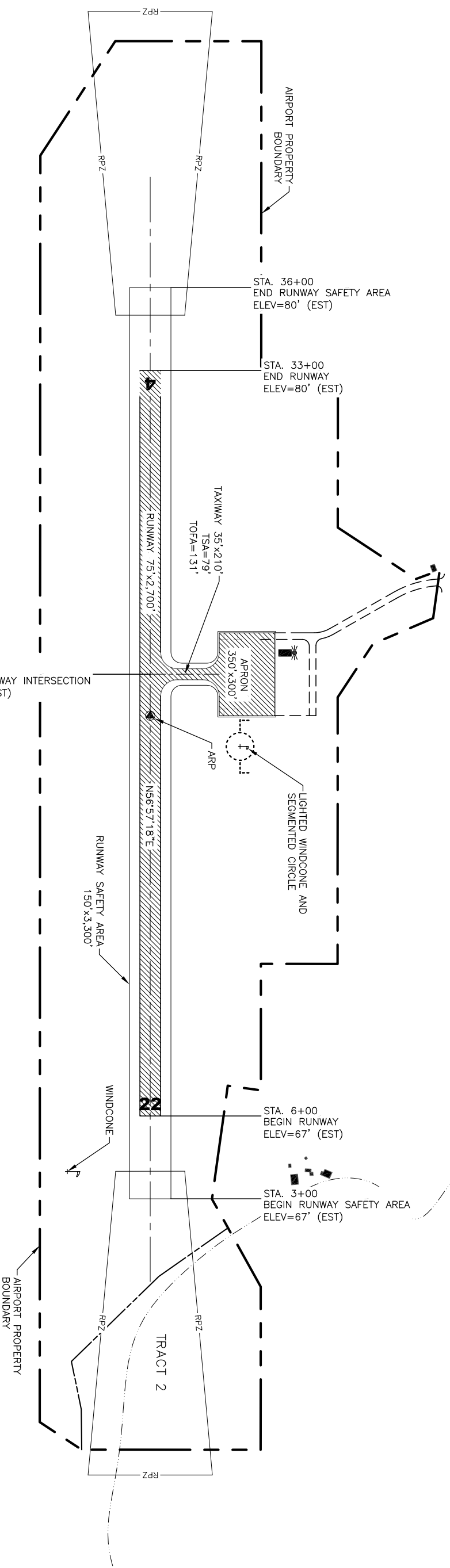
- ① CRACK SEALING RUNWAY, TAXIWAYS, AND APRONS. PROJECT IS INCLUSIVE OF ALL TIME, EQUIPMENT, MATERIALS & ETC IN ORDER TO COMPLETE THE WORK.
- ② PAVEMENT MARKINGS: LAYOUT AND REPAIR MARKINGS ON RUNWAYS, TAXIWAYS, AND APRONS. REMOVE NON STANDARD PAVEMENT MARKINGS, MAINTAIN PAINTED PAVEMENT MARKINGS ON RUNWAYS, TAXIWAYS, AND APRONS. PER AC 150/5340-1.




**STATE OF ALASKA  
DEPARTMENT OF TRANSPORTATION  
AND PUBLIC FACILITIES  
CENTRAL REGION**

**KODIAK AIRPORT**  
KODIAK, ALASKA  
FFY 2014 PRIMARY AIRPORTS  
SURFACE PRESERVATION MAINTENANCE  
AKSAS PJ# 57410

DATE:  
12/31/2013  
SHEET:  
1 OF 1

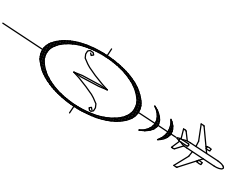


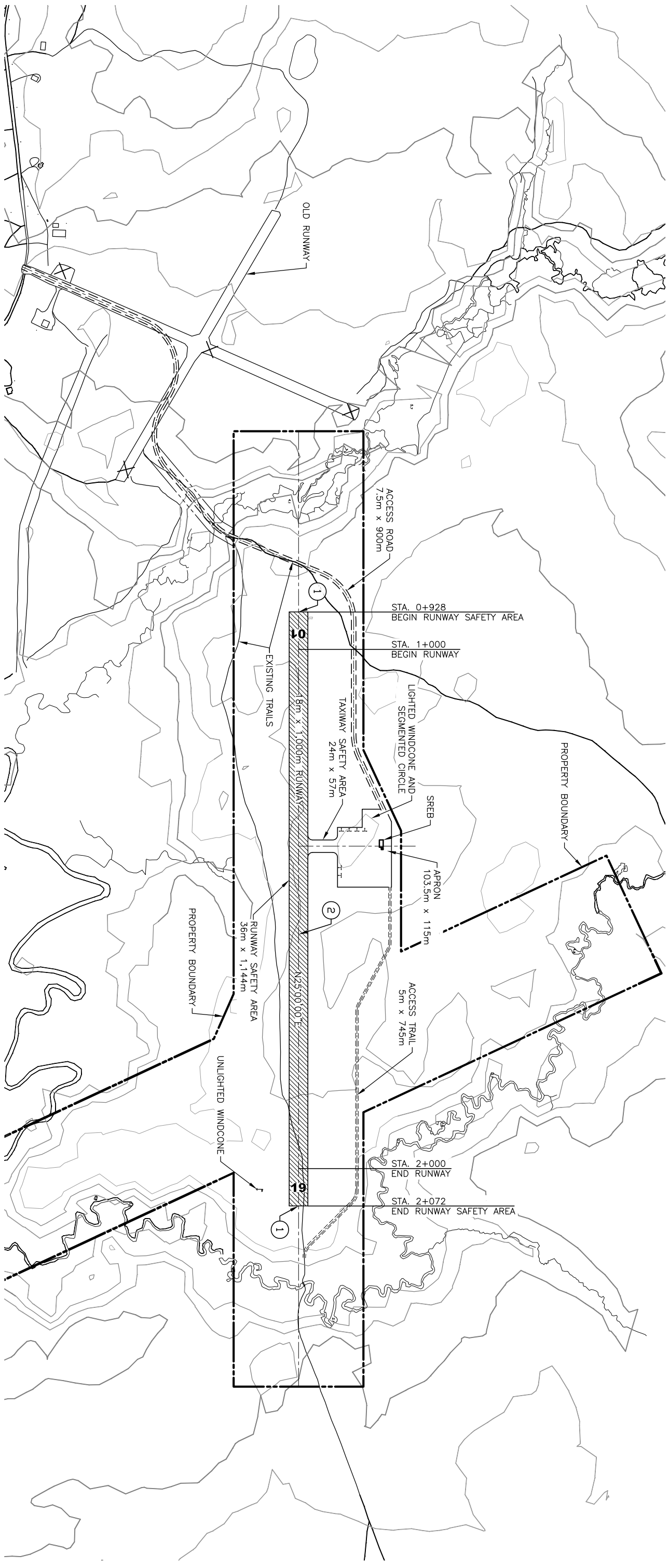
**LEGEND**

 WORK AREA

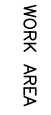
**SCOPE OF WORK**

APPLY DUST PALLIATIVE TO RETAIN THE CRITICAL FINE PARTICLES IN THE CRUSHED SURFACING. TO BE TREATED WITH DUST PALLIATIVE FOR FINES PRESERVATION TO BIND AGGREGATE TO PREVENT LOSS OF FINES FROM THE RUNWAY, TAXIWAY, AND PARTIAL APRON. LAST APPLICATION OF EARTH ARMOUR WAS 7/2010.





**LEGEND**

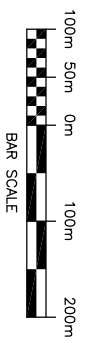


WORK AREA

**SCOPE OF WORK**

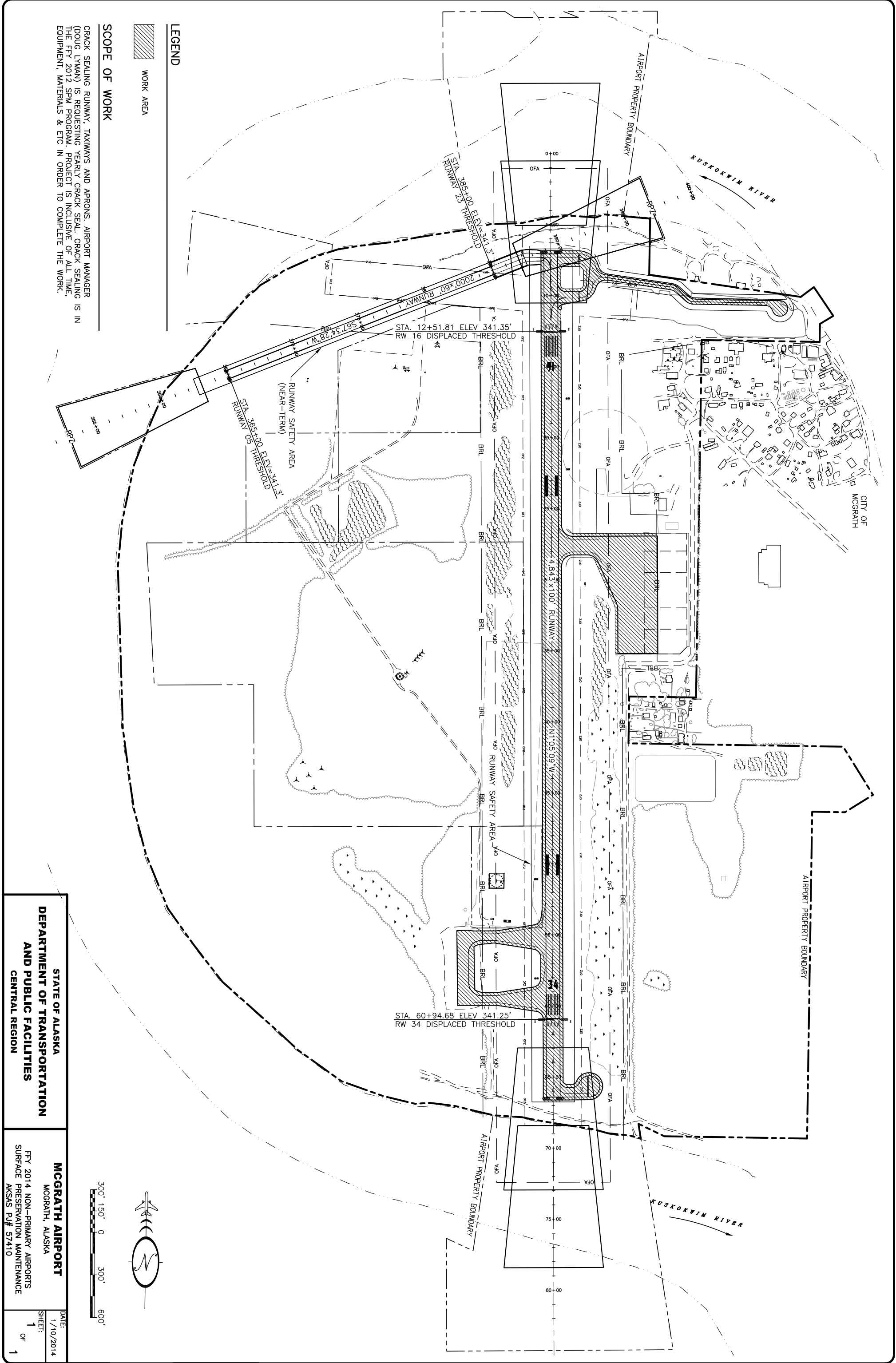
- ① REPLACE OLD THRESHOLD MARKERS WITH NEW THRESHOLD MARKER DESIGN MEETING ITEM P-660 RETRO-REFLECTIVE MARKERS AND CONES. REMOVE AND DISPOSE OF ANY EXISTING THRESHOLD PANELS.
- ② PURCHASE, HAUL AND PLACE E-1 TO RESHAPE RUNWAY CROWN, RUNWAY SHOULDERS AND RSA AND COMPACT WITH A VIBRATORY ROLLER. RUNWAY SURFACE IS DIRT WITH GRAVEL OVERLAY AND SOFT. SHOULDERS ARE SOFT AND MUDDY WHEN WET. MULTIPLE 2-4 INCH RUTS ON RUNWAY EDGES AND CIRCULAR RUTS NEAR RUNWAY THRESHOLD. RSA IS SANDY AND SOFT.

**METRIC**

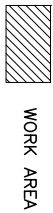


BAR SCALE





**LEGEND**



WORK AREA

**SCOPE OF WORK**

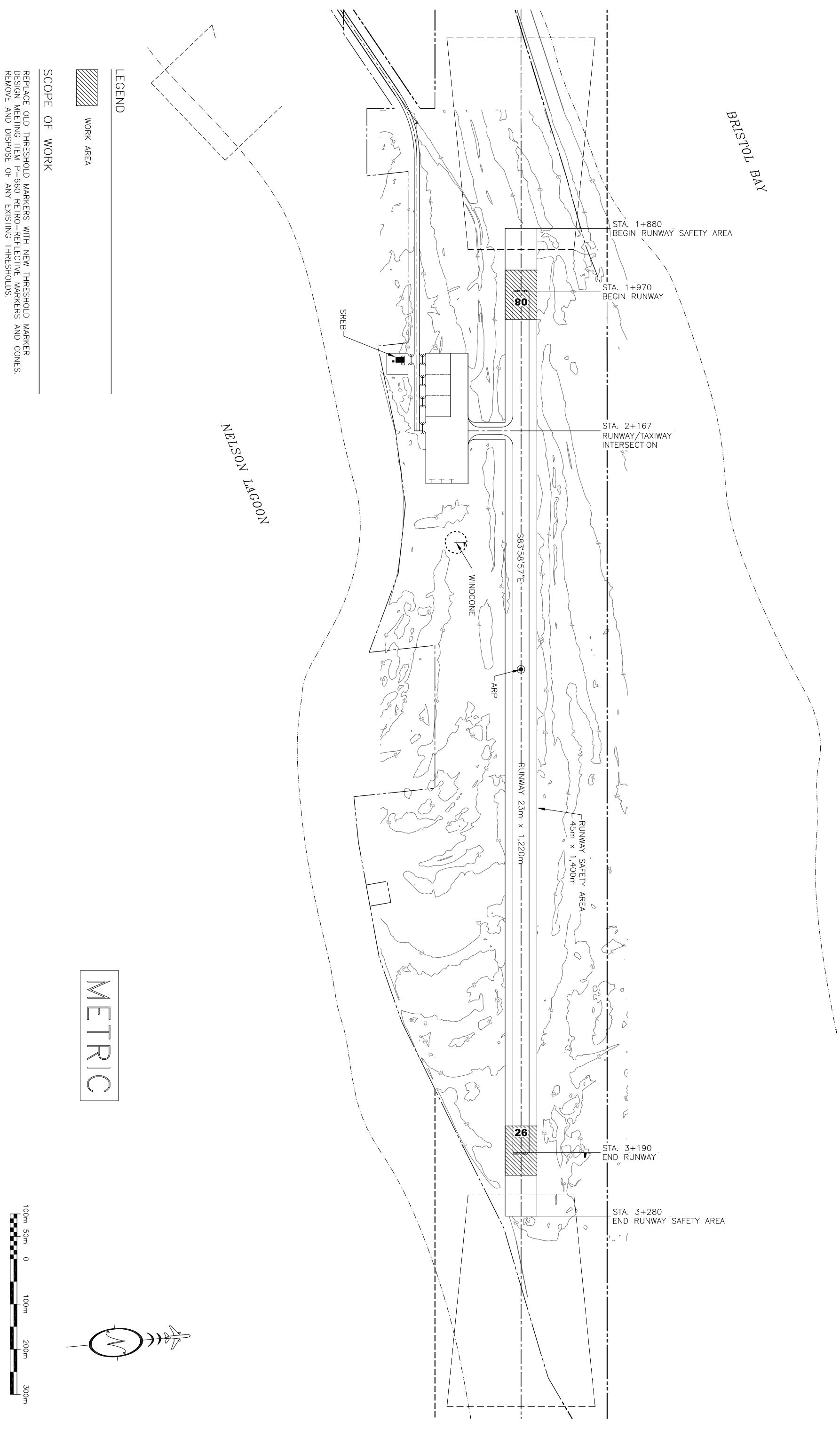
CRACK SEALING RUNWAY TAXIWAYS AND APRONS. AIRPORT MANAGER (DOUG LYMAN) IS REQUESTING YEARLY CRACK SEAL. CRACK SEALING IS IN THE FFY 2012 SPM PROGRAM. PROJECT IS INCLUSIVE OF ALL TIME, EQUIPMENT, MATERIALS & ETC IN ORDER TO COMPLETE THE WORK.



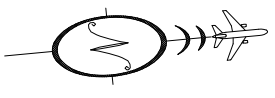
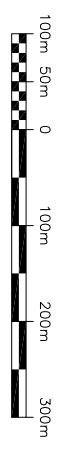
**STATE OF ALASKA**  
**DEPARTMENT OF TRANSPORTATION**  
**AND PUBLIC FACILITIES**  
 CENTRAL REGION

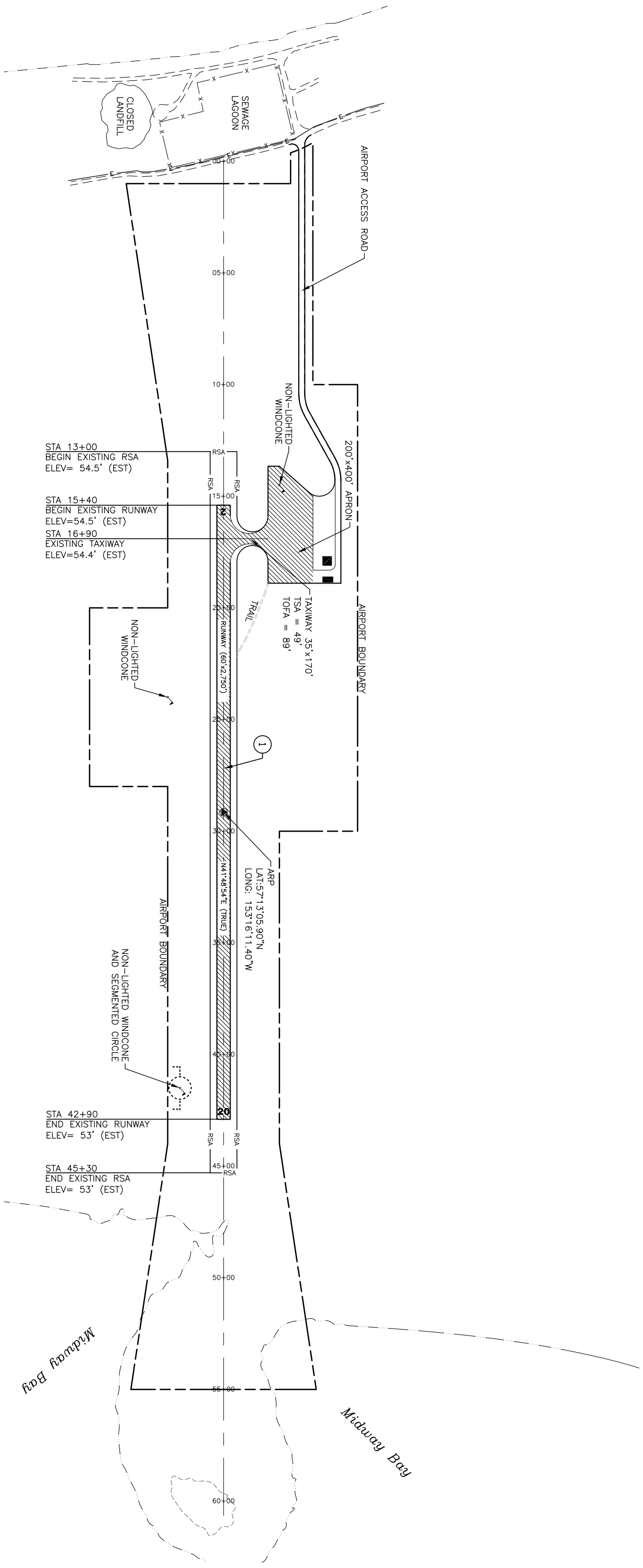
**MCGRATH AIRPORT**  
 MCGRATH, ALASKA  
 FFY 2014 NON-PRIMARY AIRPORTS  
 SURFACE PRESERVATION MAINTENANCE  
 ASAS PJ# 57410

DATE: 1/10/2014  
 SHEET: 1 OF 1



METRIC





STA 13+00  
BEGIN EXISTING RSA  
ELEV= 54.5' (EST)

STA 15+40  
BEGIN EXISTING RUNWAY  
ELEV=54.5' (EST)  
STA 16+90  
EXISTING TAXIWAY  
ELEV=54.4' (EST)

ARP  
LAT: 57°13'05.90"N  
LONG: 153°16'11.40"W

STA 42+90  
END EXISTING RUNWAY  
ELEV= 53' (EST)

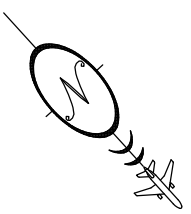
STA 45+30  
END EXISTING RSA  
ELEV= 53' (EST)

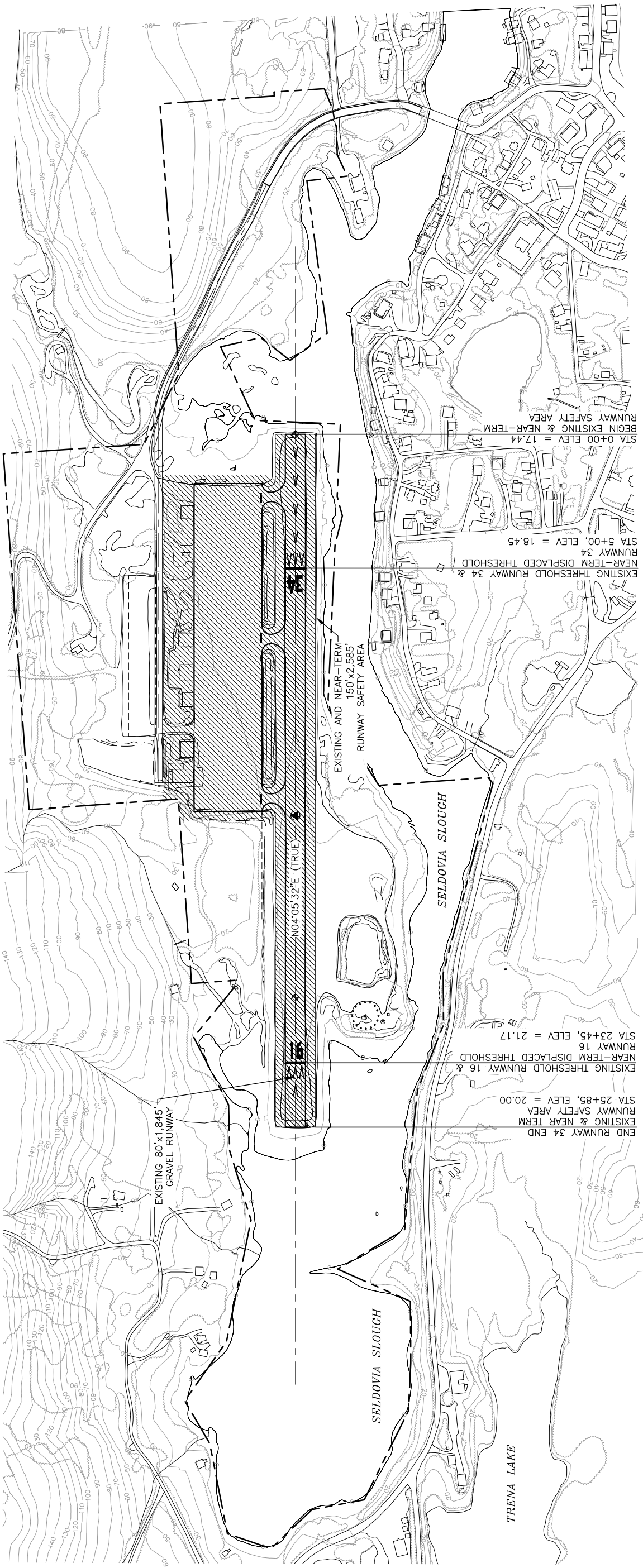
 WORK AREA

**LEGEND**

**SCOPE OF WORK**

- ① APPLY A DUST PALLIATIVE TO RETAIN THE CRITICAL FINE PARTICLES IN THE CRUSHED SURFACING.
- TO BE TREATED WITH DUST PALLIATIVE FOR FINES PRESERVATION TO BIND AGGREGATE TO PREVENT LOSS OF FINES FROM THE RUNWAY, TAXIWAY, AND PARTIAL APRON.





**LEGEND**

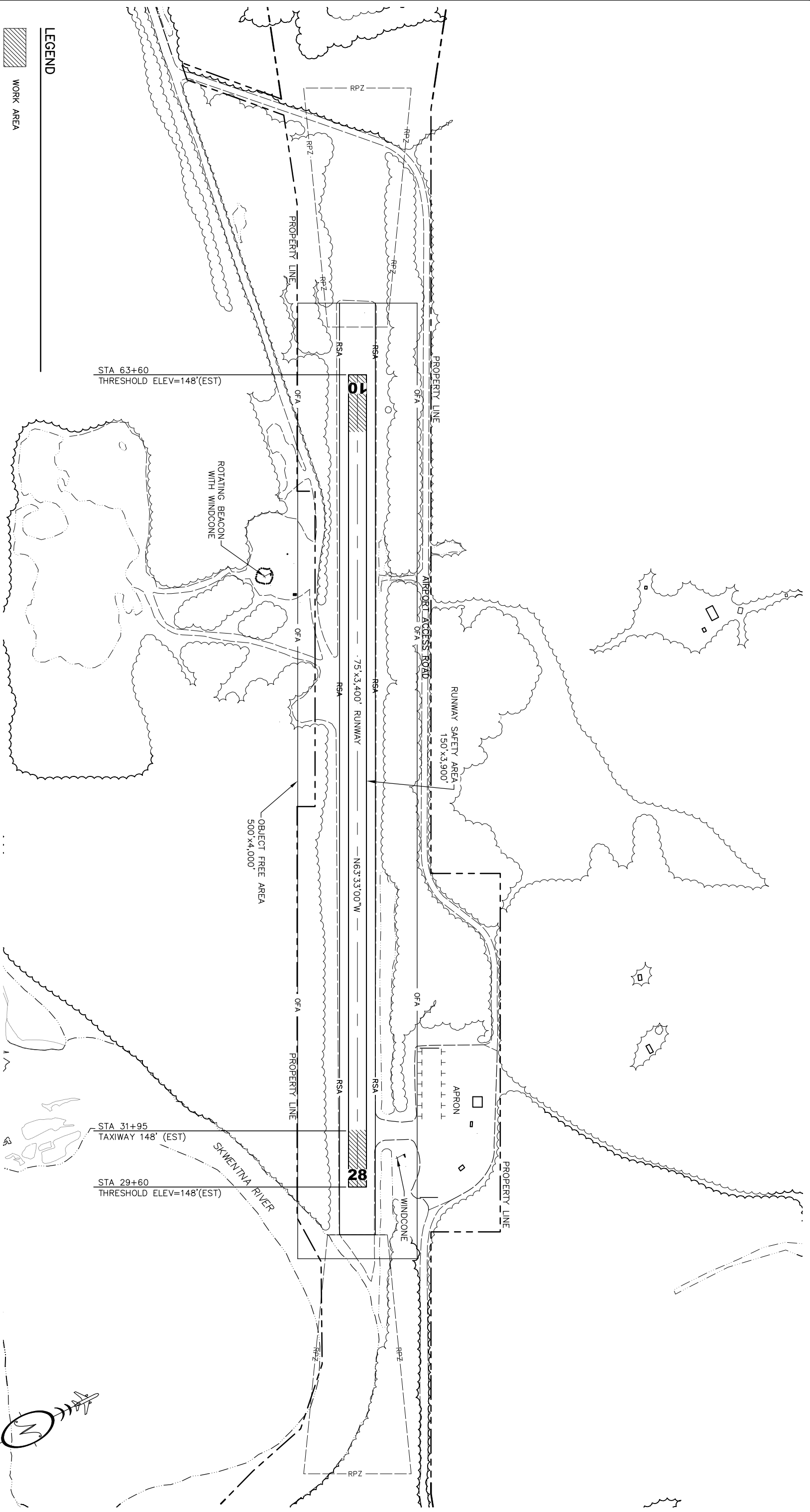


**SCOPE OF WORK**


SURFACE & DRAINAGE (ALL CULVERTS RUNWAY, TAXIWAY AND APRON).  
 PROJECT INCLUDES RE-ESTABLISH EXISTING & IMPROVE DRAINAGE SYSTEMS,  
 DITCH CUTTING, CULVERT REPAIRS, DRAINAGE STRUCTURE MAINTENANCE &  
 REPAIRS.





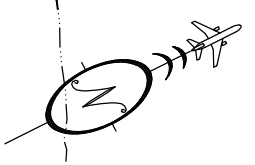


**LEGEND**

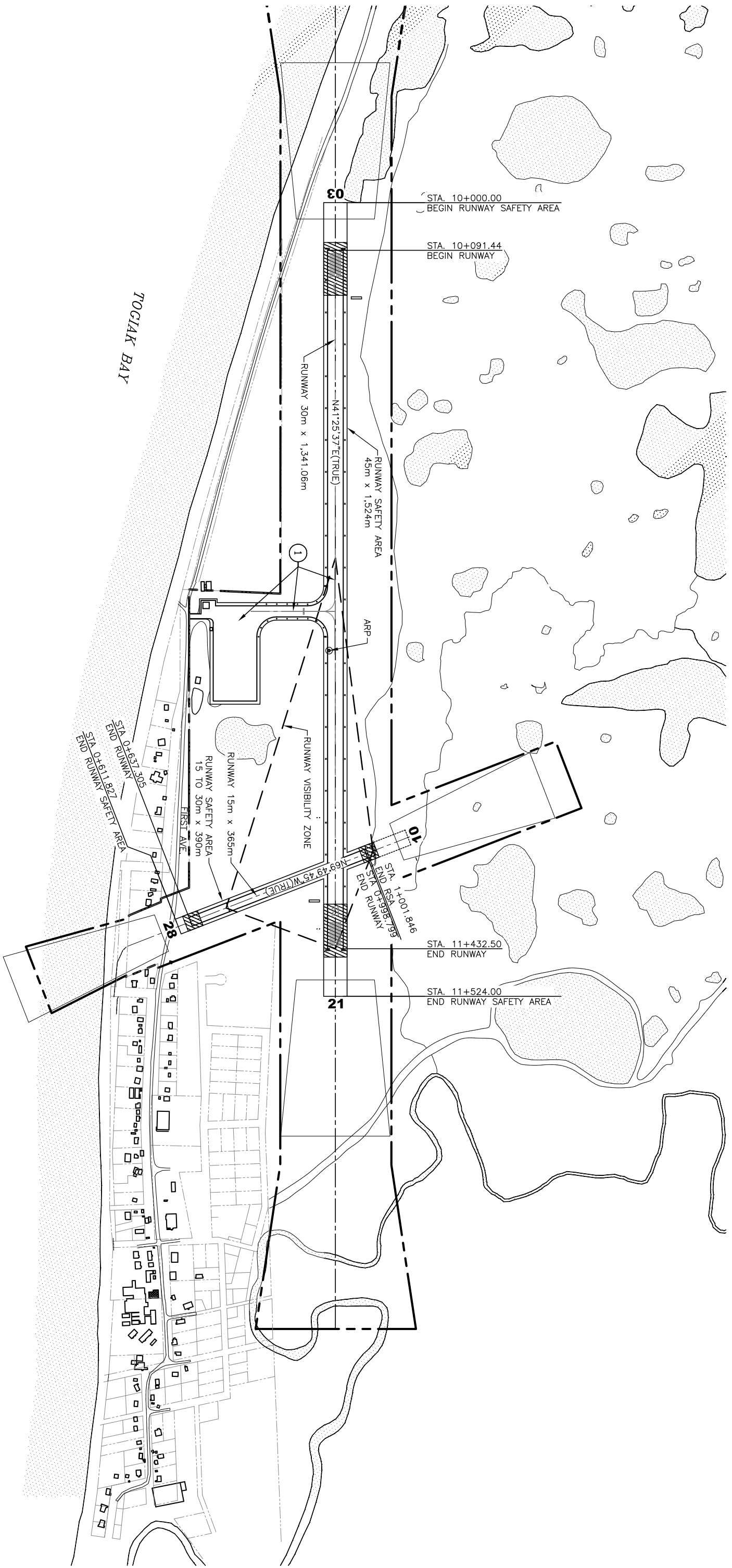
 WORK AREA

**SCOPE OF WORK**

REPLACE OLD THRESHOLD MARKERS WITH NEW THRESHOLD MARKER DESIGN MEETING ITEM P-660 RETRO-REFLECTIVE MARKERS AND CONES. REMOVE AND DISPOSE OF ANY EXISTING THRESHOLD PANELS.



<b>STATE OF ALASKA</b>	
<b>DEPARTMENT OF TRANSPORTATION</b>	
<b>AND PUBLIC FACILITIES</b>	
<b>CENTRAL REGION</b>	
<b>SKWENTNA AIRPORT</b>	DATE: 1/2/2014
SKWENTNA, ALASKA	SHEET: 1 OF 1
FFY 2014 NON-PRIMARY AIRPORTS SURFACE PRESERVATION MAINTENANCE AKSAS PJ# 57410	



**LEGEND**

WORK AREA

**SCOPE OF WORK**

REPLACE OLD THRESHOLD MARKERS WITH NEW THRESHOLD MARKER  
 DESIGN MEETING ITEM P-660 RETRO-REFLECTIVE MARKERS AND CONES.  
 REMOVE AND DISPOSE OF ANY EXISTING THRESHOLD PANELS.

**METRIC**

