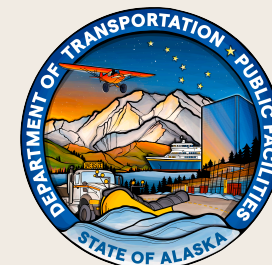


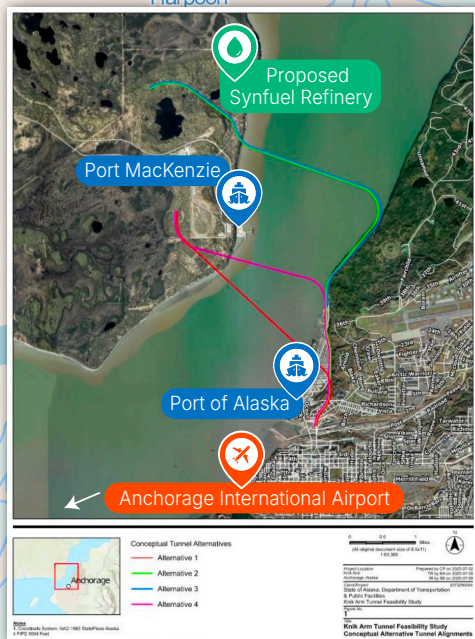
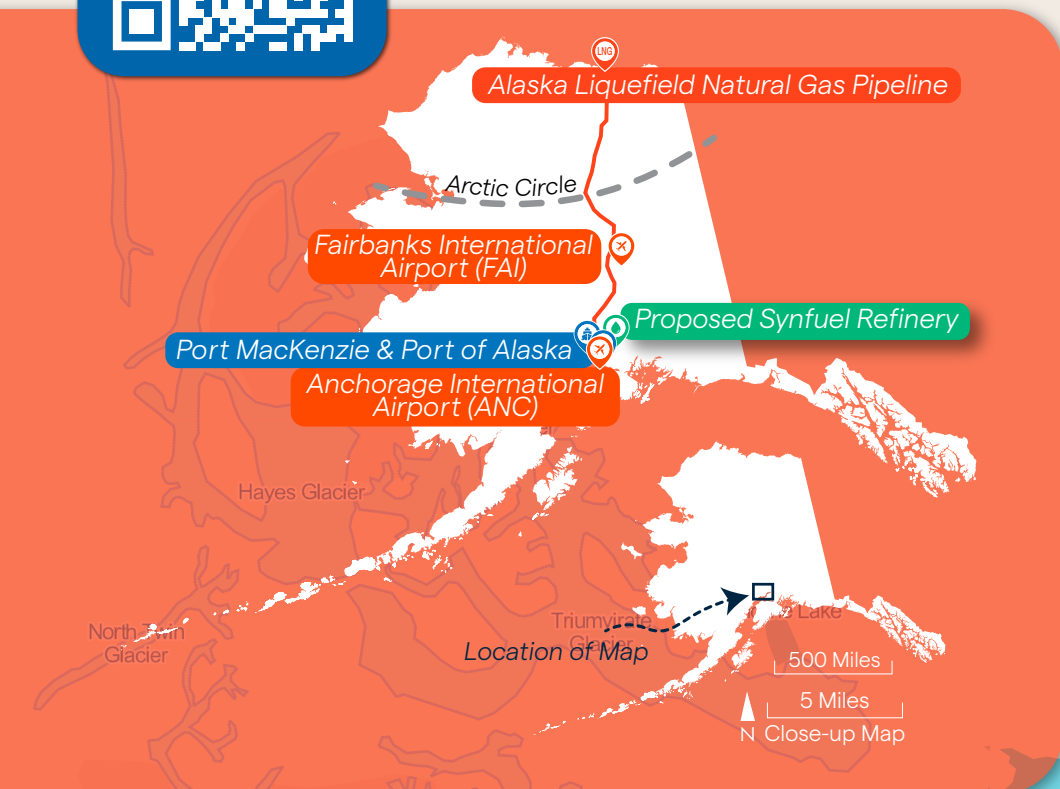
Mt. Denali - 180 miles • Fairbanks - 302 miles • Prudhoe Bay - 800 miles  
(distance from Houston, AK)

# ALASKA'S SOUTHCENTRAL INFRASTRUCTURE

Investing in the future:  
Alaska's Connectivity & Development



For more information visit  
[dot.alaska.gov/comm/saf](http://dot.alaska.gov/comm/saf)



**Proposed Knik Arm Tunnel**

- Alternative 1
- Alternative 2
- Alternative 3
- Alternative 4

**Knik Arm Tunnel Feasibility Study Tunneling Technology Report | November 2025**

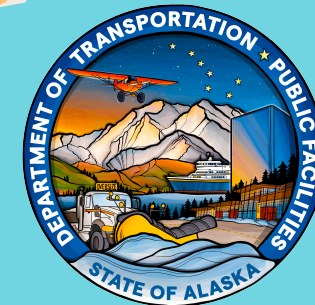
Sources: Map data © OpenStreetMap contributors, Microsoft, Esri Community Maps contributors, Map layer by Esri



- Existing Roads
- Existing Railways
- Proposed Railways
- Petroleum Refineries
- International Airports
- Proposed Roads
- Proposed Tunnels
- Proposed Bridges
- Ports

# ALASKA'S SOUTHCENTRAL INFRASTRUCTURE

Investing in the future: Alaska's Connectivity & Development



- Existing Roads
- Existing Railways
- Proposed Railways
- Petroleum Refineries
- International Airports
- Proposed Roads
- Proposed Tunnels
- Proposed Bridges
- Ports



West Susitna River

Proposed Railroad Extension

Knik Goose Bay Road

Knik Arm

Point MacKenzie

Proposed Synfuel Refinery

Proposed Knik Tunnel

JBER

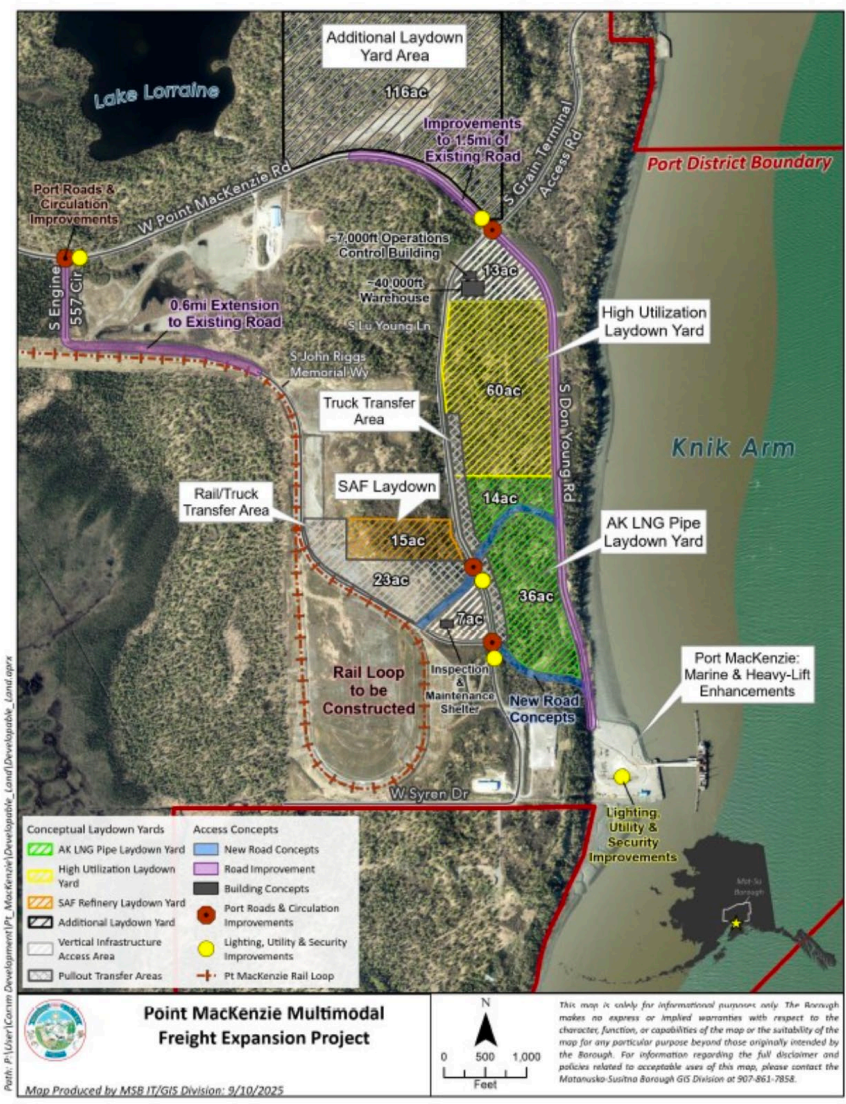
Port MacKenzie

Glenn Hwy

Don Young Port of Alaska

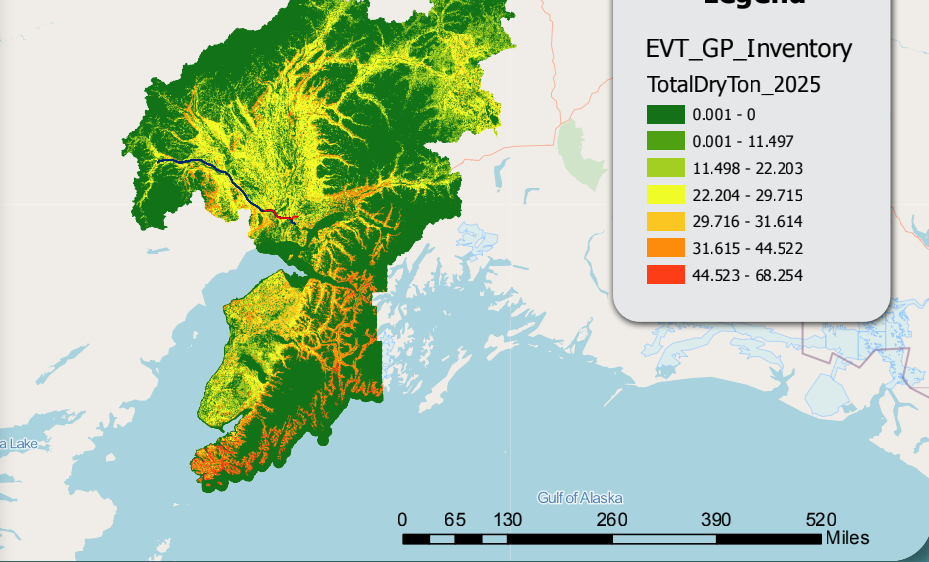
Anchorage

Anchorage International Airport



## Biomass Resource Map

Beetle Kill Trees



5 Miles