



KNIK ARM CROSSING

Anchorage - Mat-Su Fixed Transportation Link

INVESTMENT SNAPSHOT

The Knik Arm Crossing is a proposed fixed transportation link connecting Anchorage to the Matanuska-Susitna Borough, Alaska's fastest-growing region. The project will establish a second crossing across Knik Arm, improving freight mobility, system resilience, and enabling large-scale industrial and economic development.

GROWTH

Population, Freight, and Economic Expansion



- **Rapid Regional Growth:** The Matanuska-Susitna Borough is the fastest-growing region in Alaska, driving increased commuter and freight demand.
- **High Traffic Demand:** The Glenn Highway carries 40,000+ vehicles per day near Anchorage, reflecting heavy reliance on a single corridor.
- **Freight Dependence:** Approximately 90% of goods entering Alaska move through the Port of Alaska and rely on this corridor
- **Economic Expansion:** Growth in population, resource development, and logistics activity is increasing long-term transportation demand across Southcentral Alaska.

INFRASTRUCTURE

Major Project with Flexible Delivery

- **Project Scale:** Estimated \$2.4-\$3.3 billion depending on bridge or tunnel configuration.
- **Two Viable Alternatives:**
 - Long-span bridge with marine foundations and structural steel systems
 - Large-diameter bored tunnel using modern TBM technology
- **Advanced Development:** Over \$100 million already invested in engineering, environmental work, and planning.
- **Industrial Integration:** Direct connection to Point MacKenzie industrial area with thousands of acres of development land.
- Designed to support freight, commuter traffic, and national defense logistics.

OPPORTUNITY

Critical Infrastructure Gap & Economic Expansion

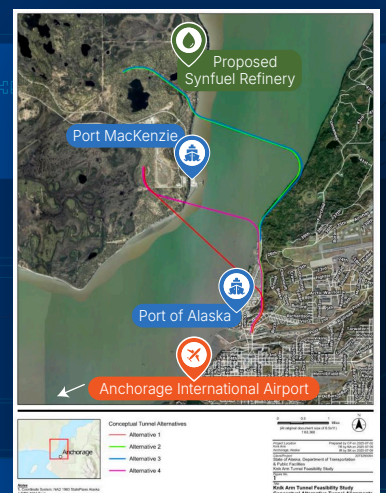
- **Single Point of Failure:** The Glenn Highway is the **only** surface connection between Anchorage and the rest of Alaska's highway system.
- Disruptions from **weather, crashes, or seismic events** can halt freight, commuter travel, and emergency response statewide.
- **No Redundant Route Exists:** Many segments have no viable detours, creating systemic risk to Alaska's economy and supply chain.
- **Unlocking Land for Growth:** A crossing provides direct access to **millions of acres of State land across Knik Arm**, enabling long-term expansion of Anchorage's industrial base, housing, and logistics development.
- **Industrial Expansion Platform:** Immediate connectivity to **Point MacKenzie** supports port, rail, and large-scale industrial development.
- Creates opportunity for **private investment in essential infrastructure with long-term demand.**

PARTNERSHIP MODEL

Public-Private Infrastructure Opportunity

- Alaska law provides a **statutory framework for tolling and partnerships** under AS 19.75 (KABATA).
- Established authority to **develop, finance, operate, and collect tolls** for a Knik Arm crossing.
- Potential delivery includes **P3 structures, toll-supported financing, and federal credit programs (TIFIA).**
- **Multiple revenue sources:** tolling, federal participation, and long-term infrastructure investment.
- Opportunities across **EPC, tunneling, bridge fabrication, materials supply, and long-term operations.**

Knik Arm Tunnel Feasibility Study Tunneling Technology Report | November 2025



KNIK ARM CROSSING

And Related Infrastructure



Point MacKenzie Airport Reserve

500 Miles

Location of Map

Knik Arm

PORT MACKENZIE

Port MacKenzie is positioned to be Alaska's central hub for critical minerals, advanced manufacturing, and national security logistics. With proposed direct rail and highway access, deepwater berths, and expansive uplands, the port can support ore terminals for bulk concentrates, modular mineral processing and refining plants, and value-added industries such as antimony processing and ammunition manufacturing. Its location offers secure, efficient transport to Alaska's major military bases and Arctic operations, while deepwater, ice-free berths make it a strategic staging point for U.S. icebreakers, Arctic logistics, and defense missions.

PROPOSED SYNFUEL REFINERY: POINT MACKENZIE

Alaska's Next-Gen SynFuel Refinery (ANSyR) is a proposed SAF facility at Point MacKenzie that would leverage Alaska's vast biomass resources, existing fuel infrastructure, and global cargo access to produce cleaner jet fuel. Strategically located near Anchorage's international airport and backed by the state's carbon storage policies and energy expertise, ANSyR positions Alaska to LEAD IN SUSTAINABLE AVIATION while advancing a carbon-smart economy.

DON YOUNG PORT OF ALASKA

The Port of Alaska Expansion is a multi-phase modernization of Alaska's largest and most critical cargo port, which handles 50 percent of all goods entering the state and 90 percent of Southcentral Alaska's consumer goods. The project includes replacing aging docks, deepening berths, upgrading petroleum and cement handling facilities, and improving seismic resilience to ensure long-term reliability. As part of its development, the port will use its designation as the Foreign Trade Zone to expand global commerce, attract investment, and increase Alaska's role in international supply chains.

ALASKA INTERNATIONAL AIRPORT SYSTEM

Anchored by Anchorage and Fairbanks, Alaska's airport system offers 24/7 global access with built-in redundancy, Foreign Trade Zone benefits, and the only U.S. cabotage exemption for cargo transfers. This unique legal and logistical platform connects Asia to North America and unlocks efficient, resilient supply chain investment from the Pacific to the Arctic.

Point MacKenzie

Proposed Synfuel Refinery

Port MacKenzie

Proposed Knik Arm Tunnel

Port of Alaska

Cook Inlet

Anchorage International Airport

Anchorage

Turnagain Arm

Scan for more information



5 Miles

Learn More About Alaska's Future
dot.commissioner@alaska.gov

Kenai Peninsula Borough, Matanuska-Susitna Borough GIS, Municipality of Anchorage, State of Alaska, Esri, TomTom, Garmin, SafeGraph, FAO, METI/NASA, USGS, EPA, NPS, USFWS