



# Alaska Department of Transportation & Public Facilities

## Earthquake Response

**Dave Kemp, P.E., PMP**

February 28, 2019

Our mission is to ***Keep Alaska Moving*** through service and infrastructure.

March 21, 2018 at 1:13 p.m.  
Eagle River Bridge Strike







# Incident Command System (ICS)

*The Incident Command System is a management system designed to enable effective and efficient domestic incident management by integrating a combination of facilities, equipment, personnel, procedures, and communications operating within a common organizational structure. ICS is normally structured to facilitate activities in five major functional areas: Command, Operations, Planning, Logistics, Intelligence & Investigations, Finance and Administration. It is a fundamental form of management, with the purpose of enabling incident managers to identify the key concerns associated with the incident—often under urgent conditions—without sacrificing attention to any component of the command system.*

**FEMA courses: 100, 200, 300, 700 and 800**

# Table Top Exercises and Smaller Events





November 30, 2018





# Friday, November 30 Immediate Response

8:29 a.m. 7.0 earthquake followed several minutes later by a 5.7 aftershock

8:35 a.m. Aviation Building evacuated and cleared

8:44 a.m. First DOT&PF Facebook post reporting damage and establishing hashtag #AlaskaEarthquake

9:30 a.m. DOT&PF Emergency Operations Center (EOC) up and running

10:15 a.m. Traffic control & Anchorage Police Department on site Minnesota & International

**10:30 a.m. Repairs started on Minnesota & International**

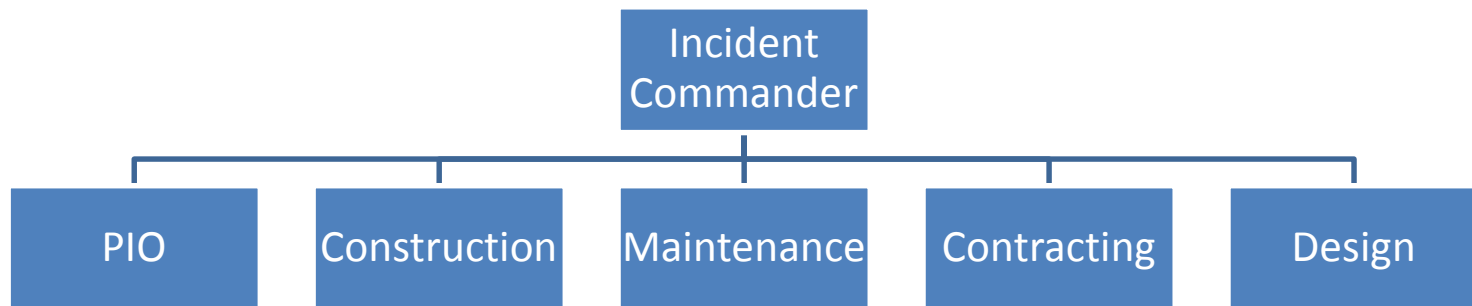
11:08 a.m. Earthquake webpage up and running

11:34 a.m. First electronic Situation Report published



# Incident Command Team-Operational

24/7 from Nov 30<sup>th</sup> to Dec 3<sup>rd</sup>





# Next Steps

1. Determine extent of damage
2. Prioritize work
3. Communicate priorities with team  
(staff, consultants and contractors)
4. Communicate with the public



# Minnesota Drive on NB Ramp to Int'l Airport Friday November 30, 2018 @ 8:29am





# Minnesota Drive SB on Ramp to Int'l Airport Tuesday, December 4, 2018.





# Willow Fishhook Road



November 30<sup>th</sup>



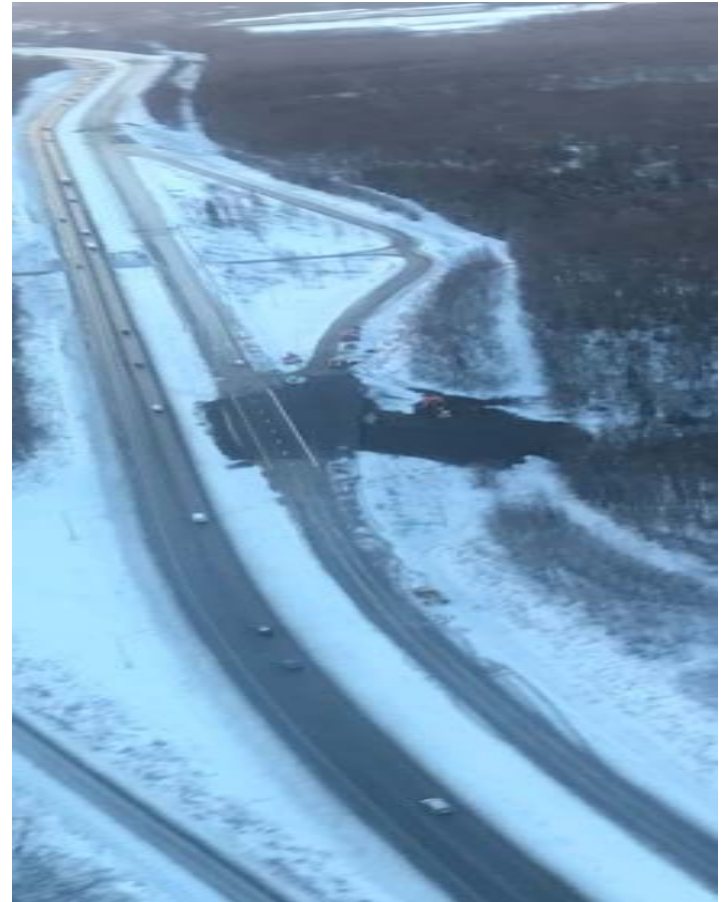
December 10th



# Glenn Highway at Mirror Lake



November 30<sup>th</sup>



December 5th



# Seward Highway at Dowling





# Partnership with Mat-Su: Vine Road





# Partnership with Mat-Su: Vine Road





# Hot Wash: What could we have done better?







# Current Activities

1. Identify additional damage due to earthquake & aftershocks (Ongoing)
2. Request additional support to deliver our normal program & all of the addition earthquake work (Request submitted)
3. Request 90 day extension of the Federal Emergency Management Agency (FEMA) 180 day time limit for earthquake damage (Approved)
4. Accounting, negotiating and paying for all the emergency work (Ongoing)
5. Establishing contracts for all the 160+ locations that will require permanent repairs (Ongoing)
6. FEMA disaster declaration (Approved)
7. Current contracts total \$7.27M

A collage of four images showing transportation workers: a worker in a yellow vest and hard hat, a woman in a green vest and sunglasses, a worker in an orange vest and hard hat, and a worker in a red hard hat and safety glasses.

# Other DOTs: “How did they do it?”

- Last spring, we realized that we were not sufficiently prepared to perform during an emergency.
- We undertook training and practiced what we learned in our training.
- We have a very close working relationship and trust with the contracting community.
- We are fortunate to have contractors who were ready, able and willing to get to work immediately with only a handshake.
- Alaskans know if we don't do it, there isn't going to be anyone else coming to help.





# Alaska Department of Transportation & Public Facilities

## Questions?

Our mission is to ***Keep Alaska Moving*** through service and infrastructure.