



# Alaska Department of Transportation & Public Facilities

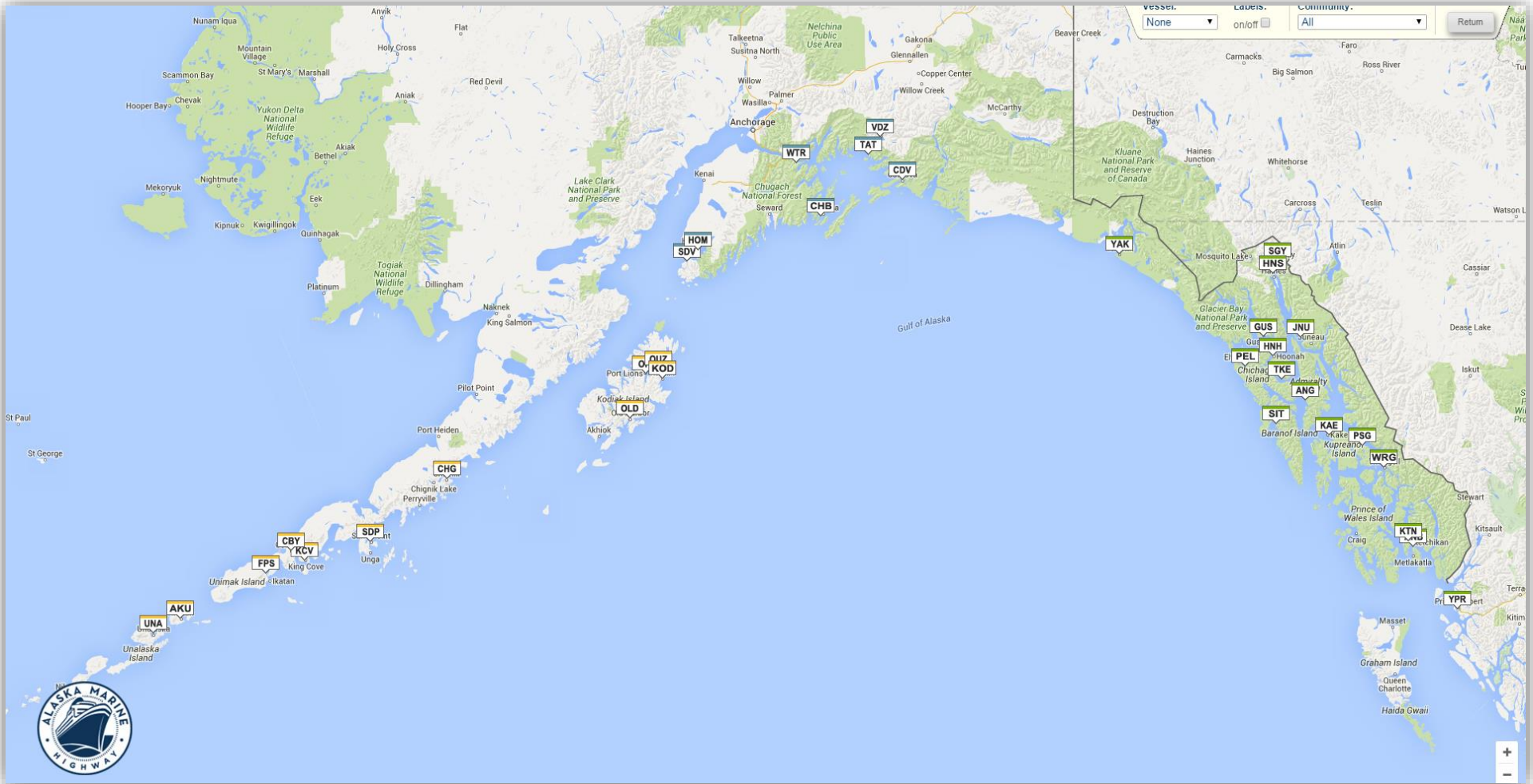
## Alaska Marine Highway System (AMHS) Overview

Mary Siroky, DOT&PF Deputy Commissioner  
Matt McLaren, AMHS Business Enterprise & Development Manager

April 10, 2019

Our mission is to **Keep Alaska Moving** through service and infrastructure.

# AMHS Ports of Call



33 Alaskan Communities, Prince Rupert, & Bellingham

# AMHS Port and Vessel Codes

## Communities

ANB = Metlakatla (Annette Bay)  
AKU = Akutan  
ANG = Angoon  
BEL = Bellingham, WA  
CBY = Cold Bay  
CDV = Cordova  
CHB = Chenega Bay  
CHG = Chignik  
FPS = False Pass  
GUS = Gustavus  
HNS = Haines  
HNH = Hoonah  
HOM = Homer  
JNU = Juneau (Auke Bay)  
KAE = Kake  
KCV = King Cove  
KOD = Kodiak  
KTN = Ketchikan

## Communities

OLD = Old Harbor  
ORI = Port Lions  
OUZ = Ouzinkie  
PEL = Pelican  
PSG = Petersburg  
SDP = Sand Point  
SDV = Seldovia  
SGY = Skagway  
SIT = Sitka  
TAT = Tatitlek  
TKE = Tenakee  
UNA = Unalaska/  
Dutch Harbor  
VDZ = Valdez  
WRG = Wrangell  
WTR = Whittier  
YAK = Yakutat  
YPR = Prince Rupert, BC

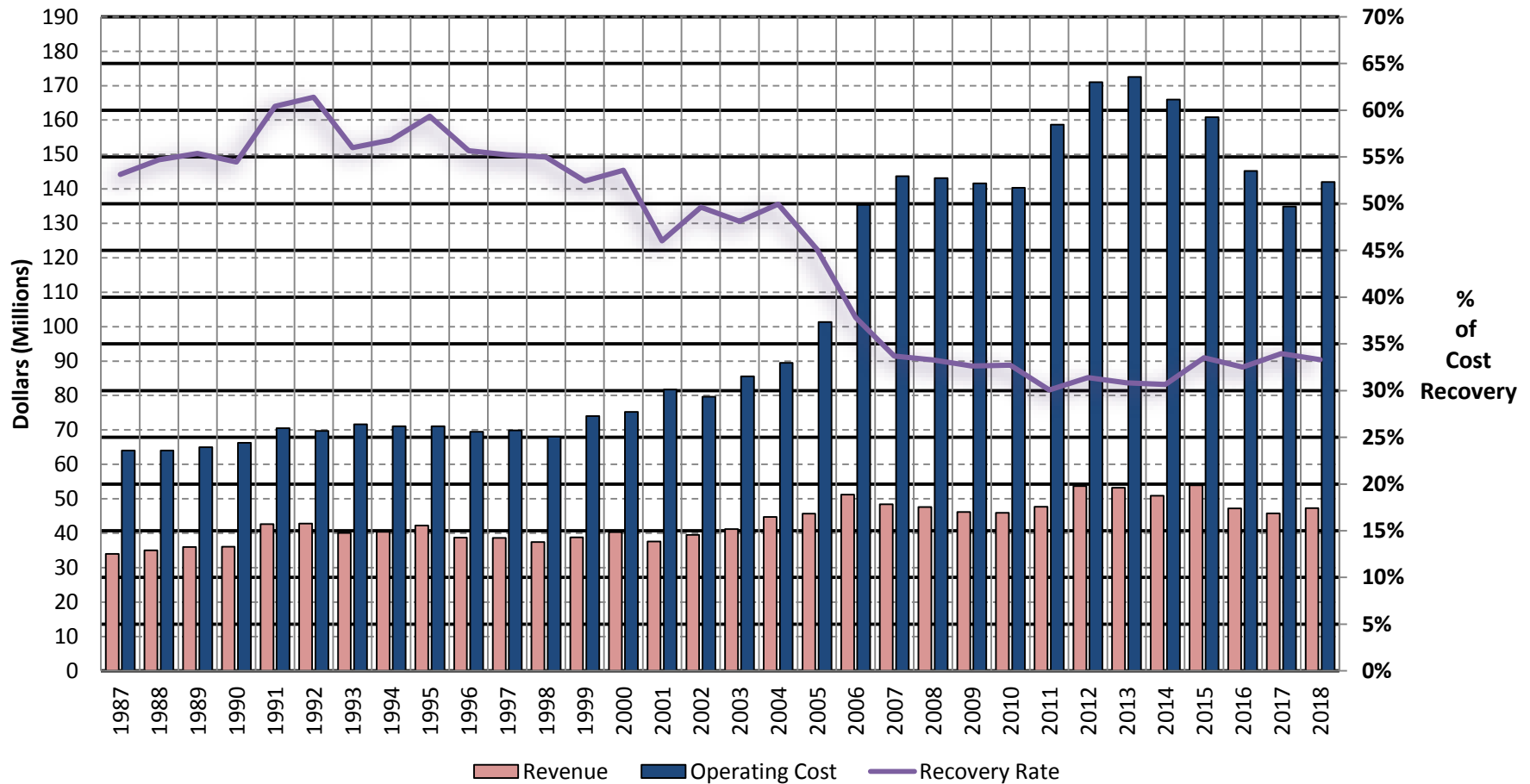
## Ships

AUR	M/V Aurora
CHE	FVF Chenega
COL	M/V Columbia
FWX	FVF Fairweather
KEN	M/V Kennicott
LEC	M/V LeConte
LIT	M/V Lituya
MAL	M/V Malaspina
MAT	M/V Matanuska
TUS	M/V Tustumena
TAZ	M/V Tazlina
M/V	Motor Vessel
FVF	Fast Vehicle Ferry



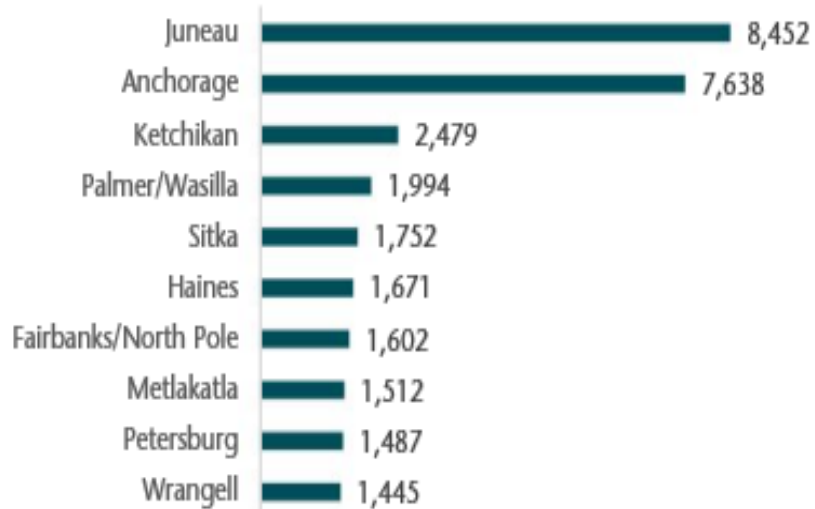
# Historical Revenue and Operating Cost

## AMHS Fare Box Recovery Rate 1987-2018

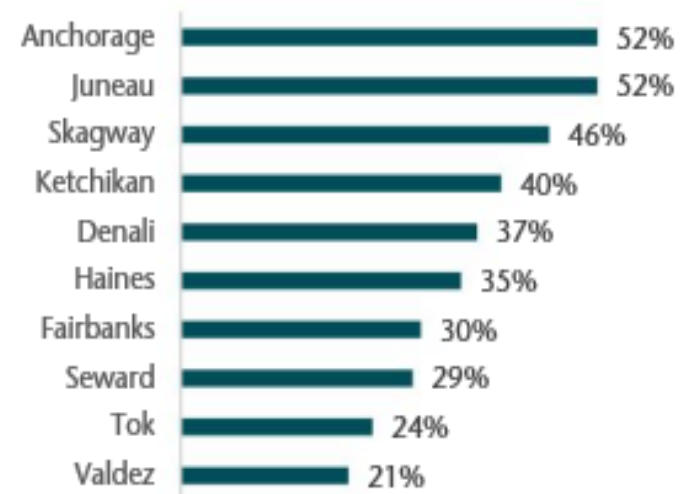


# Economic Impacts

**Chart ES-2. Number of AMHS Trips Booked by Community of Residence, Top 10, 2014**



**Chart ES-3. Top Ten Destinations of AMHS Visitors, Summer 2011**



Source: *Economic Impacts of the Alaska Marine Highway System*, McDowell Group, January 2016

# FY2020 Governor's 2/13 Budget

**Published summer schedule remains intact through the end of August**

**September 1, 2019 through September 30, 2019, operate:**

- Matanuska and Malaspina on their Bellingham and SE Alaska runs
- Tazlina in Northern Lynn Canal
- Lituya from Ketchikan – Annette Bay
- **No service to Homer, Kodiak, Aleutian Chain, Whittier, Cordova, Valdez, Chenega Bay, Tatitlek, Yakutat, Prince Rupert, Angoon, Tenakee, Pelican, Hoonah, and Gustavus**
- **Vessels in Layup: Chenega, Fairweather, Kennicott, Columbia, Tustumena, Aurora, LeConte, and Hubbard**

**October 1, 2019, through June 30, 2020:**

- **No Service**
- **Vessels in Layup: All vessels**

**This schedule provides 84.8 weeks of service with a potential fare box recovery rate of 40%.**

**UGF: \$21,825.8**

**DGF\*: \$17,869.3 (Revenues)**

**Motor Fuel Tax Fund: \$3,617.1**

**CIP Receipts: \$1,893.7**

\*Includes DOT&PF Support Services

**Expenditure Authorization: \$45,205.9**

**Generated Revenue: \$17,869.3**

**Net Deficit Amount: (\$27,336.6)**



# **Outsourcing Service**

**Per the Collective Bargaining Agreements with the vessel unions, service to the following ports could be outsourced by the State with service to/from Sitka, Juneau and Petersburg:**

- **Angoon**
- **Gustavus**
- **Kake**
- **Hoonah**
- **Tenakee**
- **Pelican**



# **Example Scenario 1**

## **Potential Outsourced Service Schedule**

- **Sitka – Angoon – Hoonah – Juneau**
  - **One day per week, every other week**
- **Juneau – Hoonah – Angoon – Sitka**
  - **One day per week, every other week**
- **Juneau – Gustavus – Juneau**
  - **One day per week, every other week**
- **Pelican and Tenakee**
  - **One port call per month**



# FY2020 AMHS Example Scenario 1

## Add Oct-June Outsourcing Villages of SE Panhandle

Published summer schedule remains intact through the end of August

### September 1, 2019 through September 30, 2019, operate:

- Matanuska and Malaspina on their Bellingham and SE Alaska runs
- Kennicott on the Bellingham – Whittier Cross-gulf run
- Tustumena on the Homer-Kodiak/Aleutian Chain run
- Tazlina in Northern Lynn Canal
- Lituya from Ketchikan – Annette Bay
- Outsourced Service to SE Villages – three days, every other week
- Vessels in Layup: Chenega, Fairweather, Columbia, LeConte, Aurora, Hubbard

### October 1, 2019 through March 31, 2020, operate:

- Matanuska on the Bellingham run
- Tustumena on the Homer – Kodiak Island and Cordova - Valdez
- Tazlina in Northern Lynn Canal
- Lituya from Ketchikan – Annette Bay
- Outsourced Service to SE Villages – three days, every other week
- No service to Prince Rupert or Whittier
- Vessels in Layup: Chenega, Fairweather, Kennicott, Malaspina, LeConte, Columbia, Aurora, Hubbard

### April 1, 2020, through June 30, 2020, operate:

- Matanuska and Malaspina on the Bellingham run
- Kennicott on the Juneau – Whittier Cross-gulf run
- Tustumena on the Homer-Kodiak Island run with one Aleutian Chain run
- Hubbard in Prince William Sound
- Tazlina in Northern Lynn Canal
- Lituya from Ketchikan – Annette Bay
- Outsourced Service to SE Villages – three days, every other week
- No service to Prince Rupert
- Vessels in Layup: Chenega, Fairweather, LeConte, Columbia, Aurora

**This schedule provides 288.8 weeks of service, including the outsourced service with a potential fare box recovery rate of 50%.**

Note: There will be gaps in service while the vessels undergo their required annual COI overhauls.

**UGF: \$41,605.9**

**DGF\*: \$47,358.9 (Revenues)**

**Motor Fuel Tax Fund: \$3,617.1**

**CIP Receipts: \$1,893.7**

\*Includes DOT&PF Support Services

**Expenditure Authorization: \$94,475.6**

**Generated Revenue: \$47,358.9**

**Net Deficit Amount: (\$47,116.7)**



# FY2020 AMHS Example Scenario 2

## Add Oct-June AMHS Operating to Villages of SE Panhandle

Published summer schedule remains intact through the end of August

### September 1, 2019 through September 30, 2019, operate:

- Matanuska and Malaspina on their Bellingham and SE Alaska runs
- Kennicott on the Bellingham – Whittier Cross-gulf run
- Tustumena on the Homer-Kodiak/Aleutian Chain run
- Tazlina in Northern Lynn Canal
- Lituya from Ketchikan – Annette Bay
- No service to Angoon, Tenakee, and Pelican due to LeConte's required overhaul
- Vessels in Layup: Chenega, Fairweather, Columbia, Aurora, Hubbard

### October 1, 2019 through March 31, 2020, operate:

- Matanuska on the Bellingham run
- Tustumena on the Homer – Kodiak Island and Cordova - Valdez
- Lituya from Ketchikan – Annette Bay
- LeConte - Dayboat service to Northern Lynn Canal, SE Panhandle, and Sitka
- No service to Prince Rupert or Whittier
- Vessels in Layup: Chenega, Fairweather, Kennicott, Malaspina, Columbia, Aurora, Tazlina, Hubbard

### April 1, 2020, through June 30, 2020, operate:

- Matanuska and Malaspina on the Bellingham run
- Kennicott on the Juneau – Whittier Cross-gulf run
- Tustumena on the Homer-Kodiak Island run with one Aleutian Chain run
- Hubbard in Prince William Sound
- Tazlina in Northern Lynn Canal
- Lituya from Ketchikan – Annette Bay
- LeConte - Dayboat service to SE Villages and Sitka
- No service to Prince Rupert
- Vessels in Layup: Chenega, Fairweather, Columbia, Aurora

**This schedule provides 283.9 weeks of service with a potential fare box recovery rate of 50%.**

Note: There will be gaps in service while the vessels undergo their required annual COI overhauls.

**UGF: \$43,124.7**

**DGF\*: \$48,120.5 (Revenues)**

**Motor Fuel Tax Fund: \$3,617.1**

**CIP Receipts: \$1,893.7**

\*Includes DOT&PF Support Services

**Expenditure Authorization: \$96,756.0**

**Generated Revenue: \$48,120.5**

**Net Deficit Amount: (\$48,635.5)**



# Scenario Comparison

	FY2020 Governor 2/13 Budget		FY2020 Example Scenario 1 Add Oct-June Outsourcing Villages of SE Panhandle		FY2020 Example Scenario 2 Add Oct-June AMHS Operating to Villages of SE Panhandle
<b>July - August</b>	Operate current published schedule		Operate current published schedule		Operate current published schedule
<b>September</b>	No service in SW Alaska, Prince William Sound, Prince Rupert, and SE Alaska Villages		Some service to all ports		No service to Angoon, Tenakee, and Pelican (Due to LeConte's required annual overhaul)
<b>October - March</b>	No service		Some service to all ports except Prince Rupert and Whittier		Some service to all ports except Prince Rupert and Whittier
<b>April - June</b>	No service		Some service to all ports except Prince Rupert		Some service to all ports except Prince Rupert
<b>Service Weeks (incl. outsourcing weeks)</b>	84.8		288.8		283.9
<b>Fare Box Recovery</b>	40%		50%		50%
<b>Funding Sources</b>	UGF: \$ 21,825.8 DGF: 17,869.3 Mtr Fuel Tax: 3,617.1 CIP Rcpts: 1,893.7 Total: \$ 45,205.9		UGF: \$ 41,605.9 DGF: 47,358.9 Mtr Fuel Tax: 3,617.1 CIP Rcpts: 1,893.7 Total: \$ 94,475.6		UGF: \$ 43,124.7 DGF: 48,120.5 Mtr Fuel Tax: 3,617.1 CIP Rcpts: 1,893.7 Total: \$ 96,756.0
<b>Net Deficit Amount</b>	(\$27,336.6)		(\$47,116.7)		(\$48,635.5)

# Example Scenario Route Comparison Summer 2019 - Southeast

## Scenario 1



## Scenario 2





# Example Scenario Route Comparison Summer 2019 - Southwest

## Scenario 1



## Scenario 2





# Example Scenario Route Comparison Winter 2019/2020 - Southeast

## Scenario 1

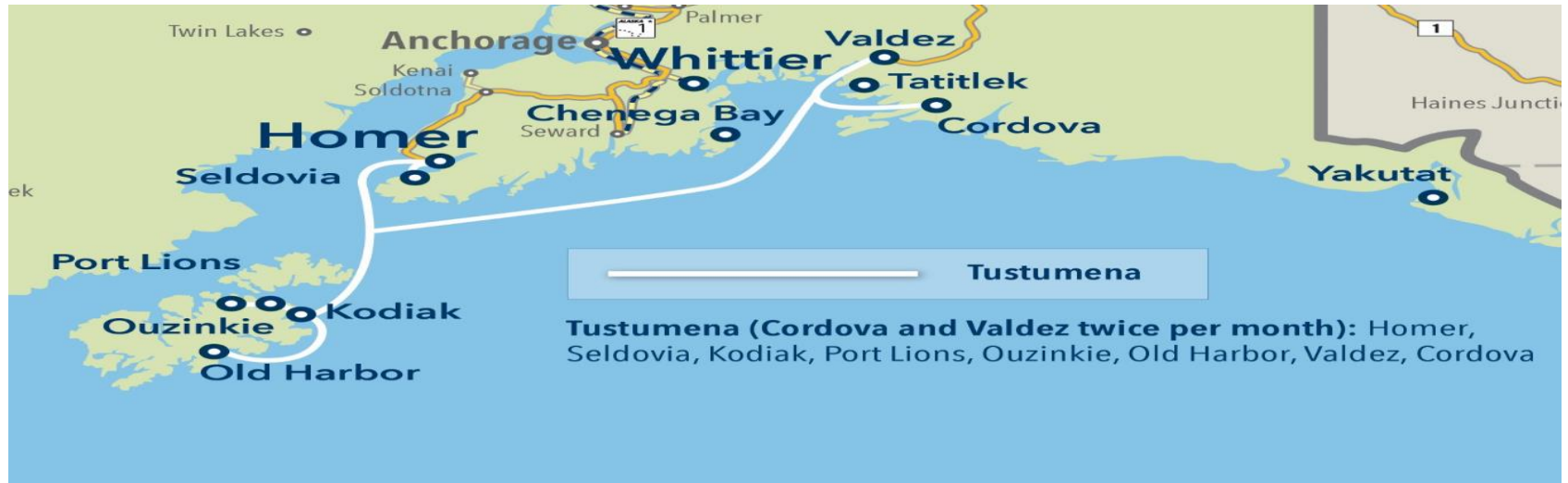


## Scenario 2



# Example Scenario Route Comparison Winter 2019/2020 - Southwest

Scenario 1



Scenario 2





# Example Scenario Route Comparison Summer 2020 - Southeast

## Scenario 1



## Scenario 2



# Example Scenario Route Comparison Summer 2020 - Southwest

## Scenario 1




## Scenario 2







# Thank You



**Mary Siroky**  
**DOT&PF Deputy Commissioner**  
(907) 465-3900  
[Mary.Siroky@alaska.gov](mailto:Mary.Siroky@alaska.gov)

**Matt McLaren**  
**AMHS Business Enterprise &  
Development Manager**  
(907) 228-7274  
[Matt.McLaren@alaska.gov](mailto:Matt.McLaren@alaska.gov)



*Clear day aboard M/V Aurora crossing the Prince William Sound. Photo by Alex Surnin, Alaska DOT&PF*

4/10/2019

18