



June 18, 2024

Dear Community Leaders and Members of the Public Interested in AMHS:

It is time to begin the public review process for the next Alaska Marine Highway System scheduling cycle. The proposed schedule patterns to be reviewed cover the winter schedule from **October 1, 2024**, through **April 30, 2025**.

The schedule patterns proposed are based on the funding levels for FY25. The operating plan has been designed to meet community service needs while staying within available funding levels and maintaining regulatory and safety standards for the vessels.

Please take the time to review and comment on this proposed operating schedule and vessel deployment for **Winter 2024-2025**. The link to access the proposed schedule patterns is:
https://dot.alaska.gov/amhs/doc/winter_considerations_2024-2025.pdf

AMHS is also interested in knowing about any need for special events scheduling and requests and that organizers or communities give the event name, dates, location, and arrival/departure times needed for each special event.

Please provide your written comments by **June 25, 2024**. Information may be faxed to 907-228-6873, emailed to dot.amhs.comments@alaska.gov, and also provided by using the following links for your service area:

- Prince William Sound Service Area Playbook: dot.alaska.gov/chartingthecourse/sap/pws.shtml
- North Lynn Canal Service Area Playbook: dot.alaska.gov/chartingthecourse/sap/nlc.shtml
- Northern Inside Passage Service Area Playbook: dot.alaska.gov/chartingthecourse/sap/nip.shtml
- Southern Inside Passage Service Area Playbook: dot.alaska.gov/chartingthecourse/sap/sip.shtml
- Aleutian Chain Service Area Playbook: dot.alaska.gov/chartingthecourse/sap/ac.shtml
- Kodiak Island Service Area Playbook: dot.alaska.gov/chartingthecourse/sap/ki.shtml
- Metlakatla Service Area Playbook: dot.alaska.gov/chartingthecourse/sap/met.shtml
- Bellingham Service Area Playbook: dot.alaska.gov/chartingthecourse/sap/bel.shtml
- Prince Rupert Service Area Playbook: dot.alaska.gov/chartingthecourse/sap/ypr.shtml

A public teleconference to hear additional comments and consider adjustments is scheduled for **June 26, 2024** at 10:00 a.m. for Southeast schedules and at 1:00 p.m. for Southwest and Southcentral schedules. The meetings will be held at the Alaska Marine Highway Ketchikan Central Office, 7037 North Tongass Highway for participants wishing to attend in person.

To attend by phone or by Zoom conference:

Topic: AMHS Winter Schedule 2024/2025 Public Meeting for Southeast AK

When: Jun 26, 2024 10:00 AM Alaska

Please click the link below to join the webinar:

<https://us06web.zoom.us/j/89091551528>

By phone: (253) 215-8782

Webinar ID: 890 9155 1528

International numbers available: <https://us06web.zoom.us/u/kdIogA0i7f>

Topic: AMHS Winter Schedule 2024/2025 Public Meeting for Southwest AK and PWS

When: Jun 26, 2024 01:00 PM Alaska

Please click the link below to join the webinar:

<https://us06web.zoom.us/j/84466431382>

By phone: (253) 215-8782

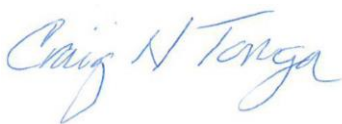
Webinar ID: 844 6643 1382

International numbers available: <https://us06web.zoom.us/u/kdIogA0i7f>

It is the policy of the Department of Transportation & Public Facilities (DOT & PF) that no person shall be excluded from participation in or be denied benefits of any and all programs or activities we provide based on race, religion, color, gender, age, marital status, ability, or national origin, regardless of the funding source including Federal Transit Administration, Federal Aviation Administration, Federal Highway Administration and State of Alaska Funds.

The State of Alaska Department of Transportation & Public Facilities (DOT & PF) complies with Title II of the Americans with Disabilities Act of 1990. Individuals with disabilities who may need auxiliary aids, services, and/or special modifications to comment should contact AMHS Operations Manager, Captain Tony Karvelas at (907) 228-7252 or email at anthony.karvelas@alaska.gov no later than **June 25, 2024** to make any necessary arrangements.

Sincerely,



Craig Tornga

Marine Director, Alaska Marine Highway System

ENCLOSURES:

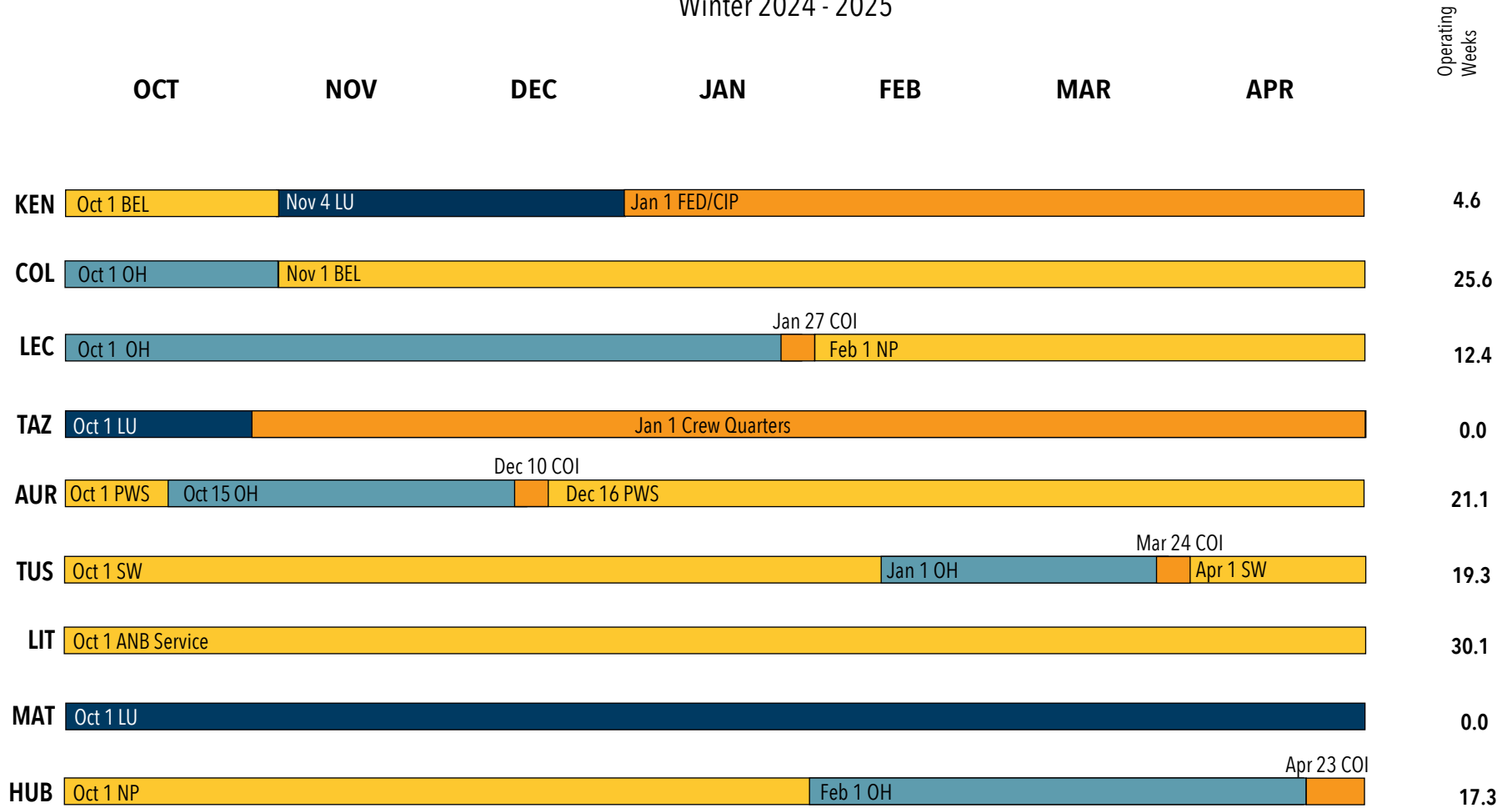
Draft FY 2025 Winter Operating Plan
Calendars of Events
Weekly Vessel Pattern Graphs (spiders)
FY 2025 Vessel Deployment Plan

DISTRIBUTION:

All Southeast Alaska Mayors
All Southcentral Alaska Mayors
All Southwest Alaska Mayors
Alaska Travel Industry Association
ARDORS
Commercial Shipping Companies
CVBs
DOT/PF Southeast Regional Director
Marine Transportation Advisory Board
Managers, AMHS Terminals
Masters, AMHS Vessels
Unions
 IBU
 MM&P
 MEBA
Tlingit & Haida Central Council
S.E. Alaska Tribal Government Advisory Committee

Operating Plan

Winter 2024 - 2025



- On Line** ANB: Annette Bay / Metlakatla Service NP: Northern Panhandle Dayboat
- Overhaul (OH)** SW: Southwest PWS: Prince William Sound
- Layup (LU)** BEL: Bellingham to Skagway
- Maintenance**

Note: Dates represent the first day of the period. Overhaul and refurbishment periods include vessel travel time.

Winter 2024-2025	
Mainline Vessels	30.5
Feeder Vessels	60.1
Southwest Vessels	40.4
Total Operating Weeks	131.0

**Alaska Highway System
Winter 2024-25 Vessel Deployment Plan
June 10, 2024**

Vessel Deployment – Winter 2024-2025

- Kennicott will sail Bellingham route in October
- Columbia will sail the Bellingham route November to April
- Matanuska be in layup.
- Lituya will sail between Annette Bay and Ketchikan
- LeConte will be in overhaul October through January and will then sail the Northern Panhandle route February through April.
- Tustumena will sail the Southwest route October through December, and will enter overhaul January through March, resuming SW service in April.
- Aurora will be in overhaul mid-October to mid-December and will then sail PWS through April.
- Hubbard will sail Northern Panhandle October to January, and will enter overhaul February through April

Service Gaps

- | | |
|-------|-------------------|
| • PWS | Oct 15 to Dec 15 |
| • SW | Jan through March |

Guide to Reading and Using AMHS Scheduling Graphs (Or Spider Graphs as they are affectionately known)

The AMHS scheduling graphs convey a massive amount of information on a single page, and they can be confusing to understand and interpret. The following explanations and suggestions may help.

1. The title of the graph defines the geographic area depicted by the chart and the time period to which it applies. When “Wk 1 & 3” or “Wk 2 & 4” appear, it implies that the schedule alternates every other week of the month (i.e. that the schedule is not the same every week). Essentially, a week 1 schedule would be followed by week 2, then back to week 3 (which is the same as week 1) and so on to round out the 4 weeks of a month.
2. The days of the week and times of the day are spread across the top axis of the chart. Midnight to midnight is shown for each day with only noon shown on the graph for reference and to declutter it.
3. The various ports are shown on the left side axis of the chart using their three letter AMHS designator. A key to decipher port and ship codes is on page 2 of this guide. Ports with only one dock or ship berth are shown on a single line. Ports with multiple docks have a line for each dock (e.g. JNU 1, JNU 2, JNU 3). They are generally arranged in geographic order, such as Skagway at the top (north) and Bellingham at the bottom (south).
4. Each ship is shown in a different color, and has the ship’s three letter identifier listed beside it throughout the chart for reference. A solid bar of a particular ship’s color in a specific port’s row on the chart indicates the time for that ship to be in that port. By reference to the top axis, you can determine the approximate times of those in port periods.
5. Thin lines of a ship’s color between ports indicate transit time for that particular ship between the two ports at either end of the line.
6. Thin lines that “run off the right edge of the chart” are continued, either on the left edge of the same chart (if running on a weekly scheduling cycle) or on the left edge of the alternating Wk 1&3, Wk 2&4 chart (if running on a two week scheduling cycle).
7. Ships that transition between geographic areas (e.g. Kennicott going across the Gulf of Alaska) have a notation box at the end of their thin transit line indicating such “To X-Gulf” or “Fr X-Gulf”

Suggestions for use:

1. To see what a particular ship does, just follow that ship’s colored line as it zigzags across the chart to determine what ports it visits and on what days and at what approximate times.
2. To see what service a particular community receives, just follow that community’s horizontal row across the chart to see what ships stop in that community and on which days of the week and times of the day that happens. You can also determine, by looking at that ship’s thin transit lines, where a ship serving your community is coming from and where it is going to next.

AMHS Community and Ship Three Letter Codes

Communities

ANB=Annette Bay
AKU = Akutan
ANG = Angoon
BEL = Bellingham, WA
CBY = Cold Bay
CDV = Cordova
CHB = Chenega Bay
CHG = Chignik
FPS = False Pass
GUS = Gustavus
HNS = Haines
HNH = Hoonah
HOM = Homer
JNU = Juneau (Auke Bay)
KAE = Kake
KCV = King Cove
KOD = Kodiak
KTN = Ketchikan
OLD = Old Harbor
ORI = Port Lions
OUZ = Ouzinkie
PEL = Pelican
PSG = Petersburg
SDP = Sand Point
SDV = Seldovia
SGY = Skagway
SIT = Sitka
TAT = Tatitlek
TKE = Tenakee
UNA = Unalaska/Dutch Harbor
VDZ = Valdez
WRG = Wrangell
WTR = Whittier
YAK = Yakutat
YPR = Prince Rupert, BC

Ships

AUR = Aurora
CHE = Chenega (Fast Ferry)
COL = Columbia
FWX = Fairweather (Fast Ferry)
KEN = Kennicott
LEC = LeConte
LIT = Lituya
MAL = Malaspina
MAT = Matanuska
TAK = Taku
TUS = Tustumena

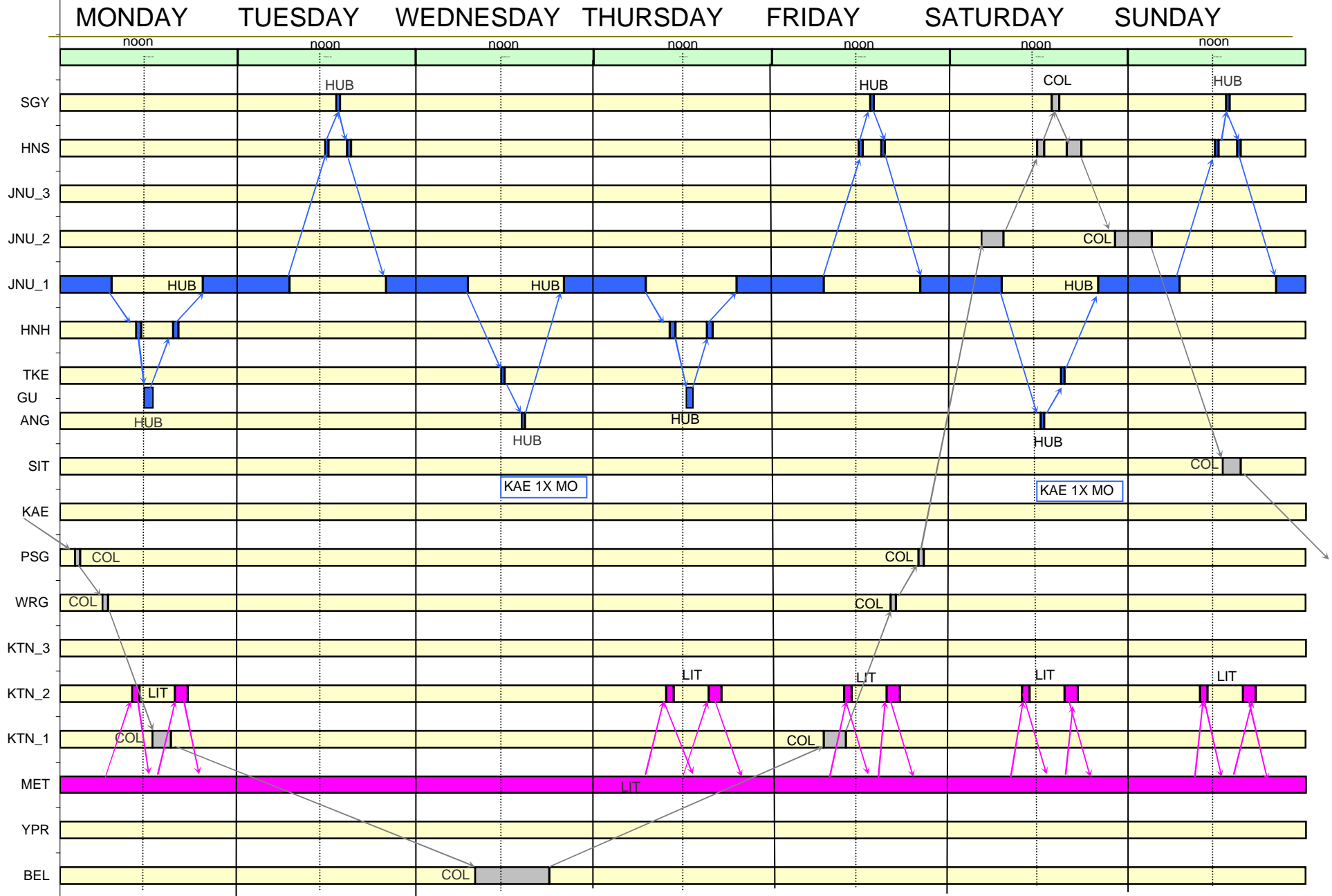
DRAFT

Winter 2024-25 SE Oct-Jan Wk 1 & 3

DRAFT

KEN ON BEL FOR OCT

Revised 06-12-2023



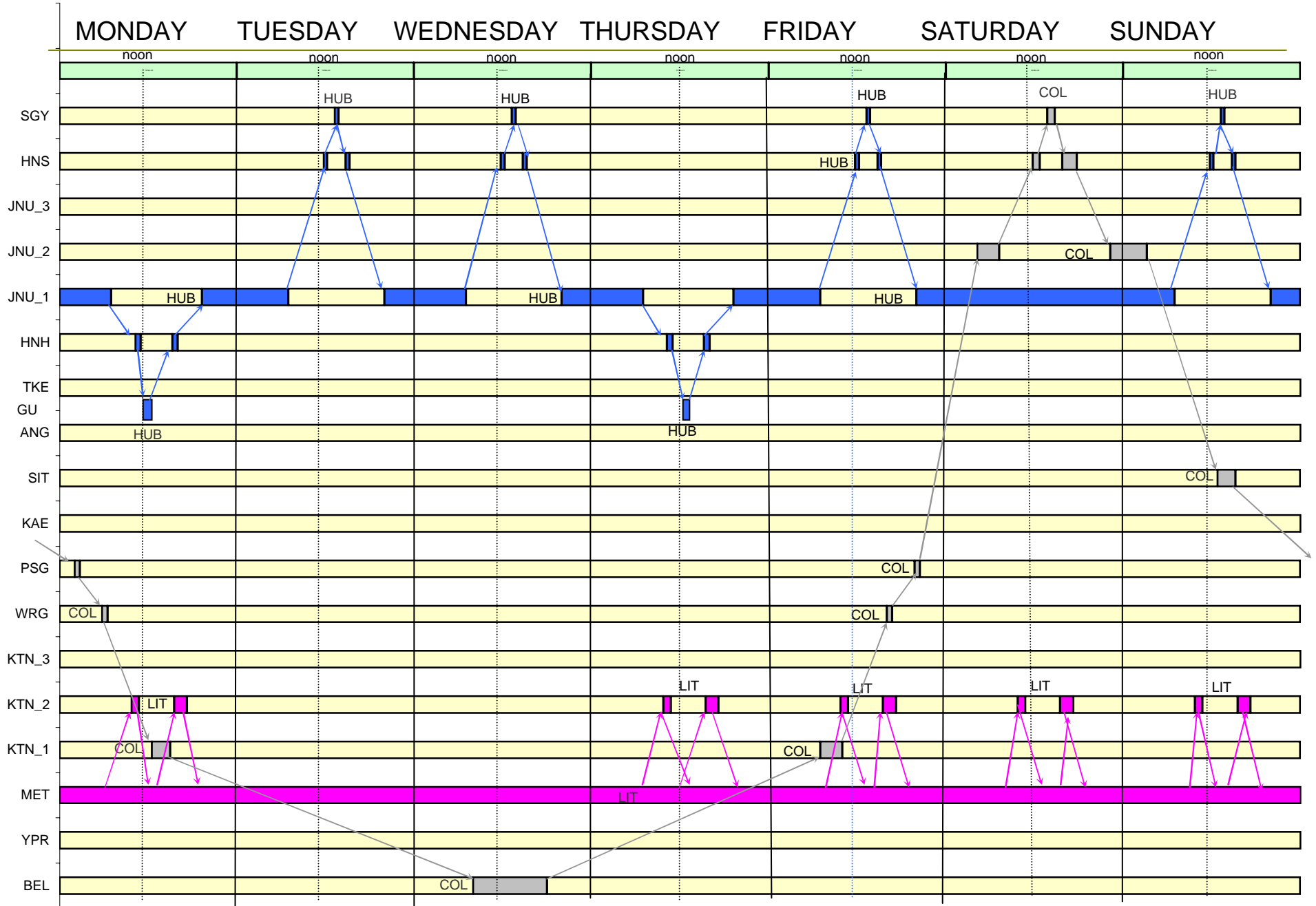
DRAFT

Winter 2024-25 SE Oct-Jan Wk 2 & 4

DRAFT

KEN ON BEL OCT

Revised 06-10-2024

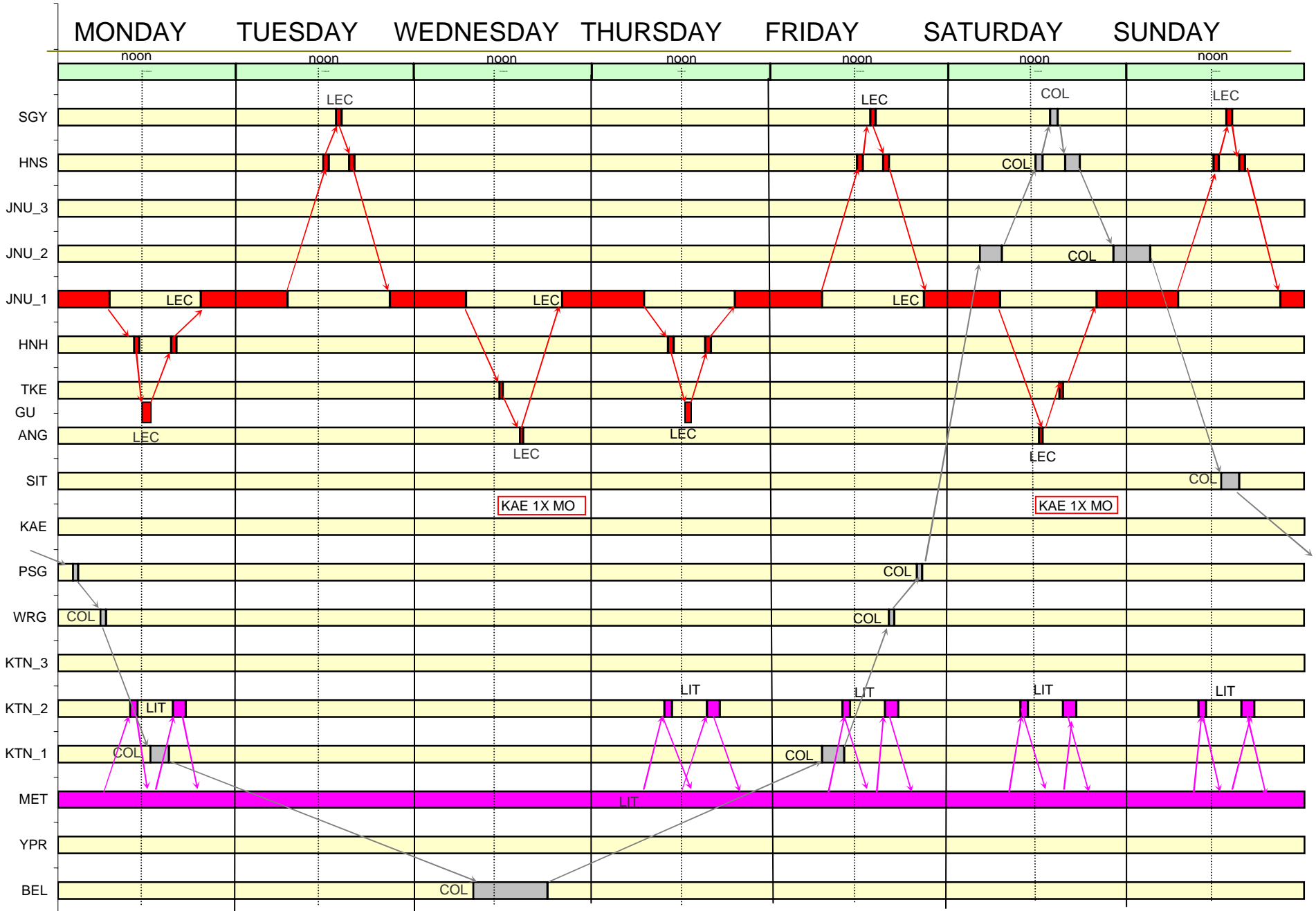


DRAFT

Winter 2024-25 SE Feb-Apr Wk 1 & 3

DRAFT

Revised 06-12-2024

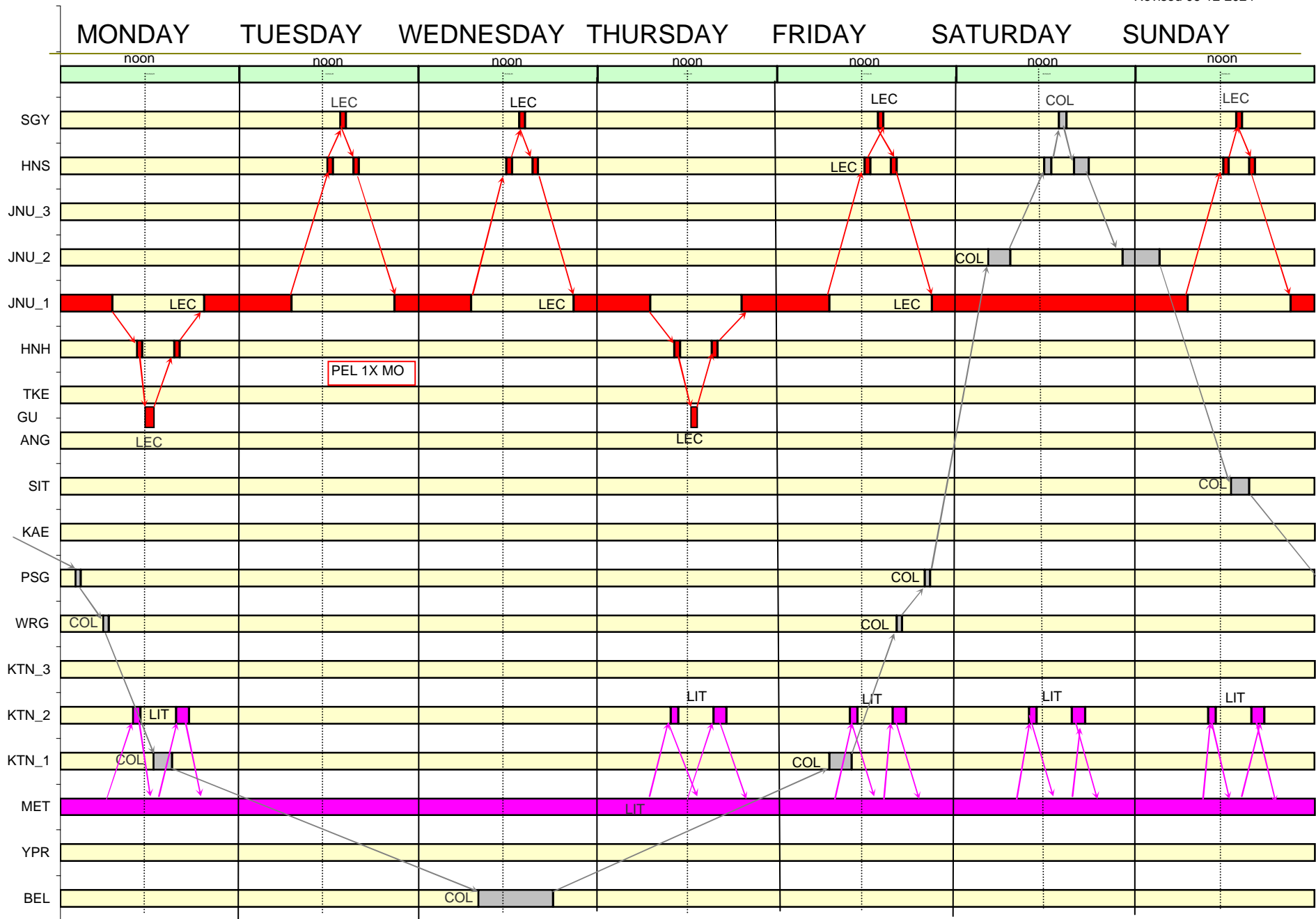


DRAFT

Winter 2024-25 SE Feb-Apr Wk 2 & 4

DRAFT

Revised 06-12-2024



2024-2025 F/W/S SOUTHEAST COMMUNITY EVENTS

rev 5-31-24

OCTOBER

ANB/ANS Grand Camp Convention
Octoberfest Celebration
Alaska Day Celebration **SIT**
Annual Bridge Club Tournament
Region V Honor Festival
Region V Swim/Dive

NOVEMBER

All Native BB
Bald Eagle Festival **HNS**
Whale Fest **SIT**
Volleyball 2A
Volleyball 3A/
Volleyball 4A

DECEMBER

Victorian Yuletide Celebration **SGY**
Wrestling 1A 2A/3A/4A **HNS** Dec 13-14
Clarke Cochrane Christmas Classic **KTN**

JANUARY

Legislature Reconvenes **JNU**
Alcan 200 Snowmachine Race **HNS**
Edgumbe Invitational **SIT**

FEBRUARY

Dick Hotch Basketball Tourney **HNS**
Sitka Jazz Fest **SIT**
1A Basketball Tourney

MARCH

2A/3A/4A Basketball Tourney **JNU**
Buckwheat Ski Classic **SGY**
Gold Medal Basketball Tourney **JNU**

APRIL

Alaska State Folk Festival **JNU**
High School Music Festival **KTN**
Stikine River Birding Festival **WRG**
Art Festival
Legislature session ends **JNU**

Please review the above Community Calendar of Events and comment on any events that are missed for your community. Schedule patterns may be changed if warranted to be able to provide service to/from the events.

2024-2025 F/W/S SOUTHWEST COMMUNITY EVENTS

rev 5-31-24

OCTOBER

Valdez Museum Road House Dinner	VDZ
Kachemak Heritage Land Trust Auction	HOM

NOVEMBER

Sobriety Celebration	CDV
----------------------	------------

DECEMBER

Nutcracker Faire	HOM
------------------	------------

JANUARY

Legislature Reconvenes	JNU
Iceworm Festival	CDV

FEBRUARY

MARCH

APRIL

Please review the above Community Calendar of Events and comment on any events that are missed for your community. Schedule patterns may be changed if warranted to be able to provide service to/from the events.

DRAFT

Winter 2024-25 PWS Wk 1 & 2

DRAFT

Revised 06-12-2024

	MONDAY	TUESDAY	WEDNESDAY	THURSDAY	FRIDAY	SATURDAY	SUNDAY
	noon	noon	noon	noon	noon	noon	noon
SDV							
HOM							
ORI							
KOD							
CHG							
SDP							
KCV							
CBY							
FPS							
AKU							
UNA							
CHB		AUR					
WTR	AUR	AUR		AUR	AUR		AUR
VDZ							AUR
TAT							
CDV	AUR	AUR	AUR	AUR	AUR	AUR	AUR
YAK							
JNU_1							

DRAFT

Winter 2024-25 PWS Wk 3 & 4

DRAFT

Revised 06-12-2024

	MONDAY	TUESDAY	WEDNESDAY	THURSDAY	FRIDAY	SATURDAY	SUNDAY
	noon	noon	noon	noon	noon	noon	noon
SDV							
HOM							
ORI							
KOD							
CHG							
SDP							
KCV							
CBY							
FPS							
AKU							
UNA							
CHB							
WTR	AUR	AUR		AUR	AUR		AUR
VDZ							AUR
TAT							
CDV	AUR	AUR			AUR	AUR	AUR
YAK							
JNU_1							