



THE STATE
of **ALASKA**
GOVERNOR MIKE DUNLEAVY

Department of Transportation and Public Facilities

ALASKA MARINE HIGHWAY SYSTEM
Office of the General Manager

7559 North Tongass Highway
Ketchikan, Alaska 99901-9101
Main: 907.228.7250
Fax: 907.228.6875

August 18, 2021

Dear Community Leaders and Members of the Public Interested in AMHS:

It is time to begin the public review process for the next Alaska Marine Highway System scheduling cycle. The proposed schedule patterns to be reviewed cover the summer from May, 2022 through September, 2022.

The schedule patterns proposed are based on the funding levels for FY22. The operating plan has been designed to meet community service needs while staying within available funding levels, and maintaining regulatory and safety standards for the vessels.

Please take the time to review and comment on this proposed schedule. The link to access the proposed schedule patterns is: https://dot.alaska.gov/amhs/doc/summer_considerations_2022.pdf

AMHS is also interested in knowing about any need for special events scheduling and requests that organizers or communities give the event name, dates, location, and arrival/departure times needed for each special event.

Please provide your written comments prior to September 1, 2021. Information may be faxed to 907-228-6873 or, preferably, emailed to dot.amhs.comments@alaska.gov. A public teleconference to hear additional comments and consider adjustments is scheduled for Thursday, September 2, 2021 at 10:00 a.m. for Southeast schedules and at 1:30 p.m. for Southwest and Southcentral schedules. The meetings will be held at the Alaska Marine Highway Ketchikan Central Office, 7559 North Tongass Highway for participants wishing to attend in person.

The toll free number to participate in both teleconferences is: 1-515-604-9000, access code 279613.

It is the policy of the Department of Transportation & Public Facilities (DOT & PF) that no person shall be excluded from participation in, or be denied benefits of any and all programs or activities we provide based on race, religion, color, gender, age, marital status, ability, or national origin, regardless of the funding source including Federal Transit Administration, Federal Aviation Administration, Federal Highway Administration and State of Alaska Funds.

"Keep Alaska Moving through service and infrastructure."

The State of Alaska Department of Transportation & Public Facilities (DOT & PF) complies with Title II of the Americans with Disabilities Act of 1990. Individuals with disabilities who may need auxiliary aids, services, and/or special modifications to comment should contact AMHS Operations Manager, Captain Tony Karvelas at (907) 228-7252 or email at anthony.karvelas@alaska.gov no later than August 26, 2021 to make any necessary arrangements.

If you have any questions about the proposed schedule, please email your questions to dot.amhs.comments@alaska.gov or fax them to 907-228-6873.

Sincerely,



Captain John F. Falvey, Jr.
General Manager Alaska Marine Highway

ENCLOSURES:

Draft FY23 Operating Plan
Calendars of Events
Weekly Vessel Pattern Graphs
FY23 Vessel Deployment Plan

DISTRIBUTION:

All Southeast Alaska Mayors
All Southcentral Alaska Mayors
All Southwest Alaska Mayors
Alaska Travel Industry Association
ARDORS
Commercial Shipping Companies
CVBs
DOT/PF Southeast Regional Director
Marine Transportation Advisory Board
Managers, AMHS Terminals
Masters, AMHS Vessels
Unions
 IBU
 MM&P
 MEBA
Tlingit & Haida Central Council
S.E. Alaska Tribal Government Advisory Committee

Operating Plan Summer 2022



■ On Line

■ Overhaul (OH)

■ Layup (LU)

■ Maintenance

BEL: Bellingham to Skagway

NP: Northern Panhandle Dayboat

SW: Southwest

X - Gulf: Cross Gulf Southwest

PWS: Prince William Sound

MET: Metlakatla Service

BEL - YPR alt: Bellingham / Prince Rupert Alternating

Mainline Vessels 62.1

Feeder Vessels 35.2

Southwest Vessels 42.0

Note: Dates represent the first day of the period. Overhaul and refurbishment periods include vessel travel time.

Total Operating Weeks 139.3

Alaska Marine Highway System

Summer 2022

August 17, 2021

Proposed Vessel Deployment

- Kennicott to operate Bellingham/Juneau cross the Gulf to Southwest, three times per month, May through September.
- Matanuska to operate on the Wednesday Bellingham Route, May through September.
- LeConte to sail Northern Panhandle May through September.
- Columbia to operate on the Friday Bellingham route, mid-May to mid-September ****pending crew availability****
- Lituya to sail 5 days per week between Annette Bay and Ketchikan, May, August, September. She will be in a Federal Project, June and July.
- Tustumena to sail the Southwest Route with one Aleutian chain trip per month May through September.
- Aurora to sail PWS May through September.

Guide to Reading and Using AMHS Scheduling Graphs (Or Spider Graphs as they are affectionately known)

The AMHS scheduling graphs convey a massive amount of information on a single page, and they can be confusing to understand and interpret. The following explanations and suggestions may help.

1. The title of the graph defines the geographic area depicted by the chart and the time period to which it applies. When “Wk 1 & 3” or “Wk 2 & 4” appear, it implies that the schedule alternates every other week of the month (i.e. that the schedule is not the same every week). Essentially, a week 1 schedule would be followed by week 2, then back to week 3 (which is the same as week 1) and so on to round out the 4 weeks of a month.
2. The days of the week and times of the day are spread across the top axis of the chart. Midnight to midnight is shown for each day with only noon shown on the graph for reference and to declutter it.
3. The various ports are shown on the left side axis of the chart using their three letter AMHS designator. A key to decipher port and ship codes is on page 2 of this guide. Ports with only one dock or ship berth are shown on a single line. Ports with multiple docks have a line for each dock (e.g. JNU 1, JNU 2, JNU 3). They are generally arranged in geographic order, such as Skagway at the top (north) and Bellingham at the bottom (south).
4. Each ship is shown in a different color, and has the ship’s three letter identifier listed beside it throughout the chart for reference. A solid bar of a particular ship’s color in a specific port’s row on the chart indicates the time for that ship to be in that port. By reference to the top axis, you can determine the approximate times of those in port periods.
5. Thin lines of a ship’s color between ports indicate transit time for that particular ship between the two ports at either end of the line.
6. Thin lines that “run off the right edge of the chart” are continued, either on the left edge of the same chart (if running on a weekly scheduling cycle) or on the left edge of the alternating Wk 1&3, Wk 2&4 chart (if running on a two week scheduling cycle).
7. Ships that transition between geographic areas (e.g. Kennicott going across the Gulf of Alaska) have a notation box at the end of their thin transit line indicating such “To X-Gulf” or “Fr X-Gulf”

Suggestions for use:

1. To see what a particular ship does, just follow that ship’s colored line as it zigzags across the chart to determine what ports it visits and on what days and at what approximate times.
2. To see what service a particular community receives, just follow that community’s horizontal row across the chart to see what ships stop in that community and on which days of the week and times of the day that happens. You can also determine, by looking at that ship’s thin transit lines, where a ship serving your community is coming from and where it is going to next.

AMHS Community and Ship Three Letter Codes

Communities

ANB=Annette Bay
AKU = Akutan
ANG = Angoon
BEL = Bellingham, WA
CBY = Cold Bay
CDV = Cordova
CHB = Chenega Bay
CHG = Chignik
FPS = False Pass
GUS = Gustavus
HNS = Haines
HNH = Hoonah
HOM = Homer
JNU = Juneau (Auke Bay)
KAE = Kake
KCV = King Cove
KOD = Kodiak
KTN = Ketchikan
OLD = Old Harbor
ORI = Port Lions
OUZ = Ouzinkie
PEL = Pelican
PSG = Petersburg
SDP = Sand Point
SDV = Seldovia
SGY = Skagway
SIT = Sitka
TAT = Tatitlek
TKE = Tenakee
UNA = Unalaska/Dutch Harbor
VDZ = Valdez
WRG = Wrangell
WTR = Whittier
YAK = Yakutat
YPR = Prince Rupert, BC

Ships

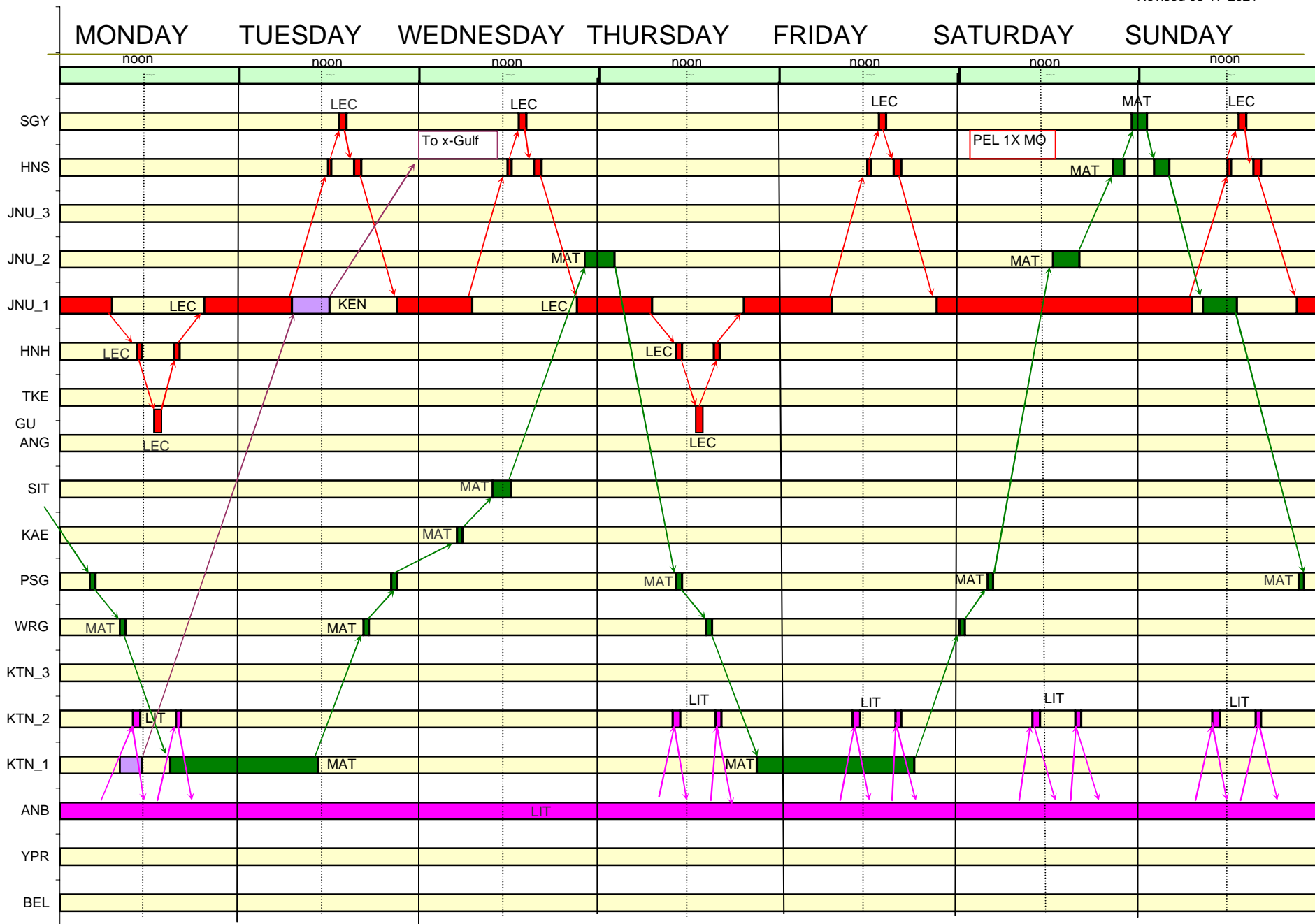
AUR = Aurora
CHE = Chenega (Fast Ferry)
COL = Columbia
FWX = Fairweather (Fast Ferry)
KEN = Kennicott
LEC = LeConte
LIT = Lituya
MAL = Malaspina
MAT = Matanuska
TAK = Taku
TUS = Tustumena

DRAFT

Summer 2022 SE Wk 2

DRAFT

Revised 08-17-2021

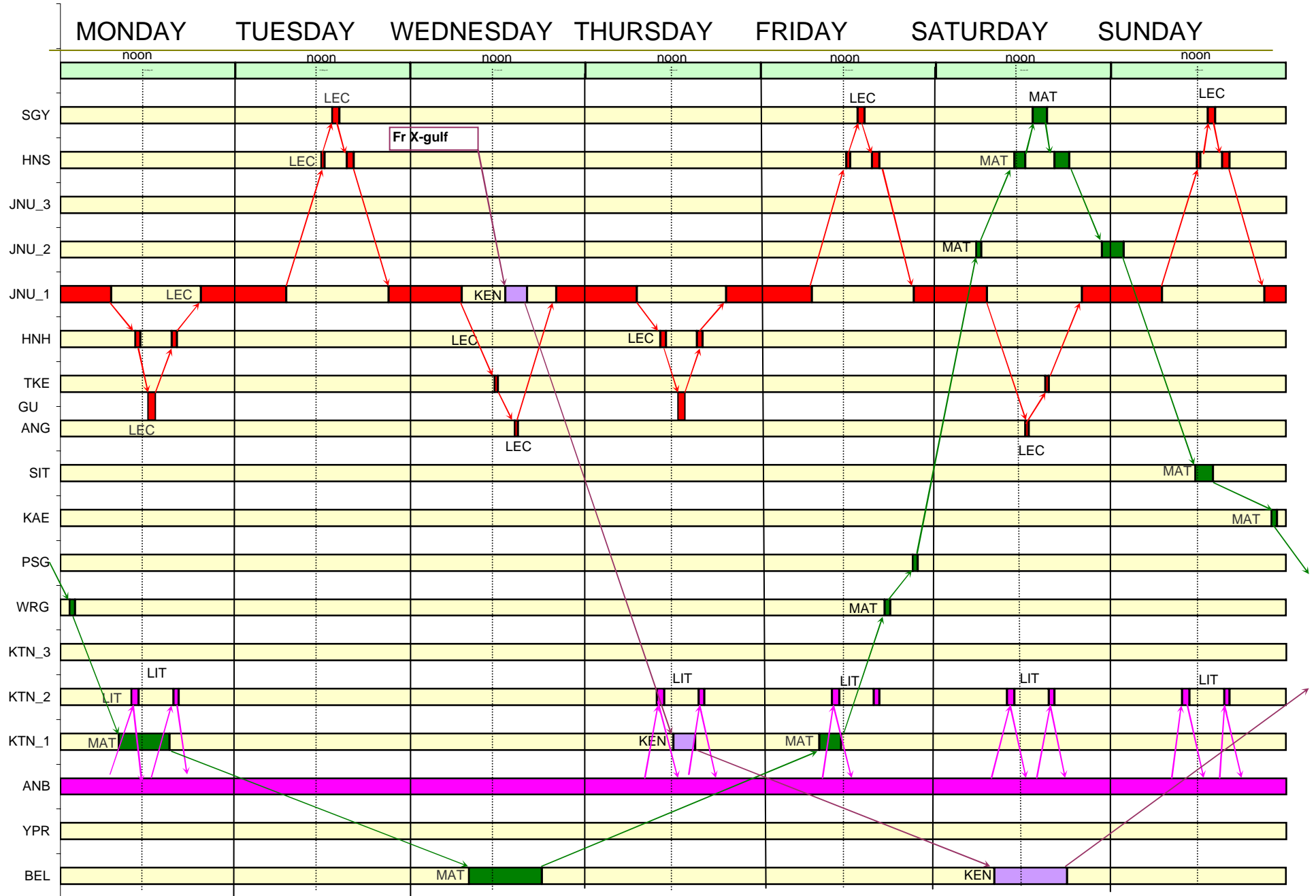


DRAFT

Summer 2022 SE Wk 3

DRAFT

Revised 08-17-2021

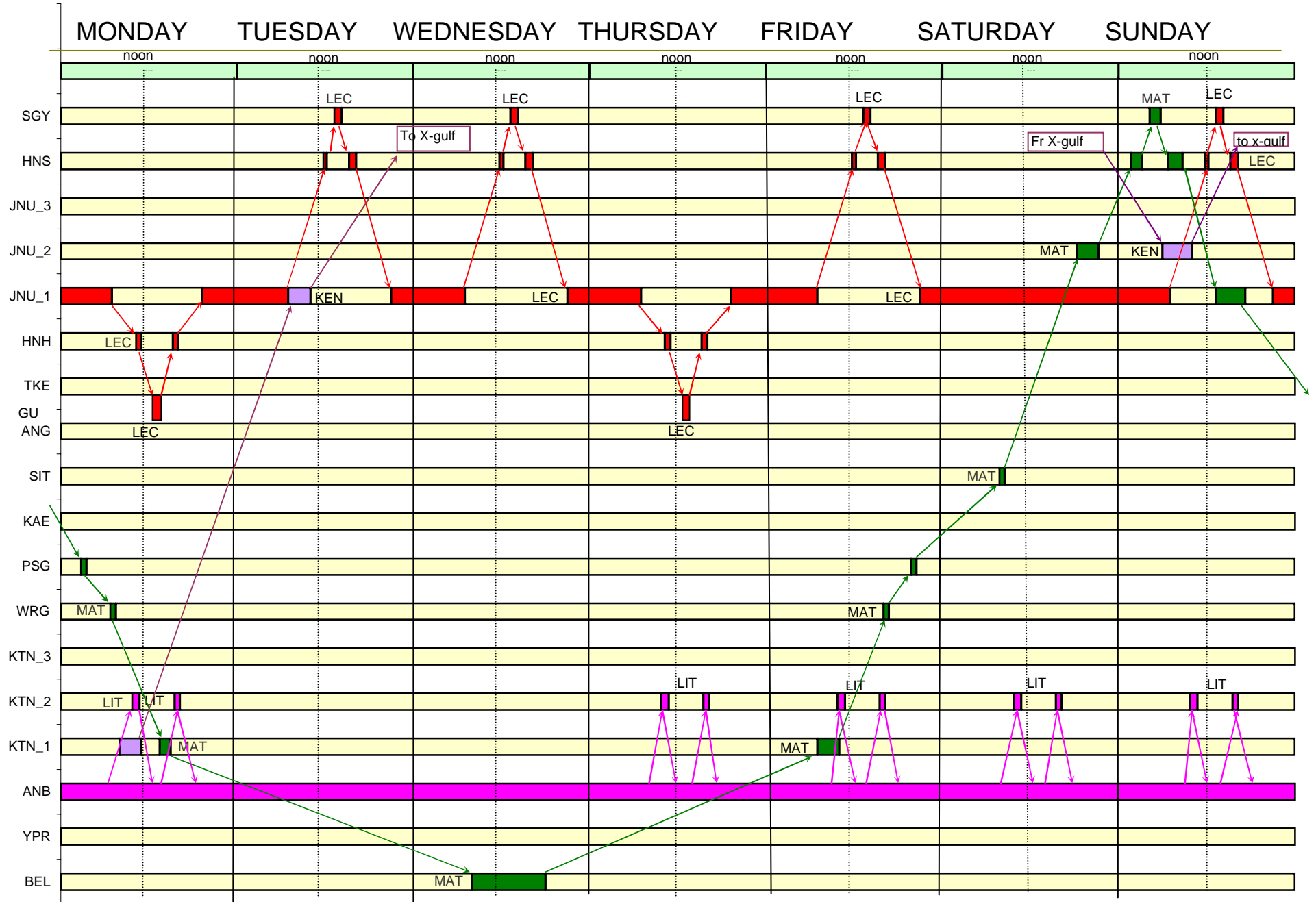


DRAFT

Summer 2022 SE Wk 4

DRAFT

Revised 07-05-2021



Summer 2022 Southeast Community Events

rev 07-26-21

MAY

Great Ak Craftbeer and Homebrew Fest **HNS**
Little Norway **PSG**

JUNE

Kluane Bike Relay **HNS**
Celebration **JNU** June 8-11

JULY

Dustball Tournament **WHT**
SE Alaska State Fair **HNS**

AUGUST

Founder's Day **MET**
Dog Salmon Festival **KAE**
Iron Man **JNU** Aug 4-7

SEPTEMBER

Mudball **SIT**
Klondike Road Relay **SGY**

-

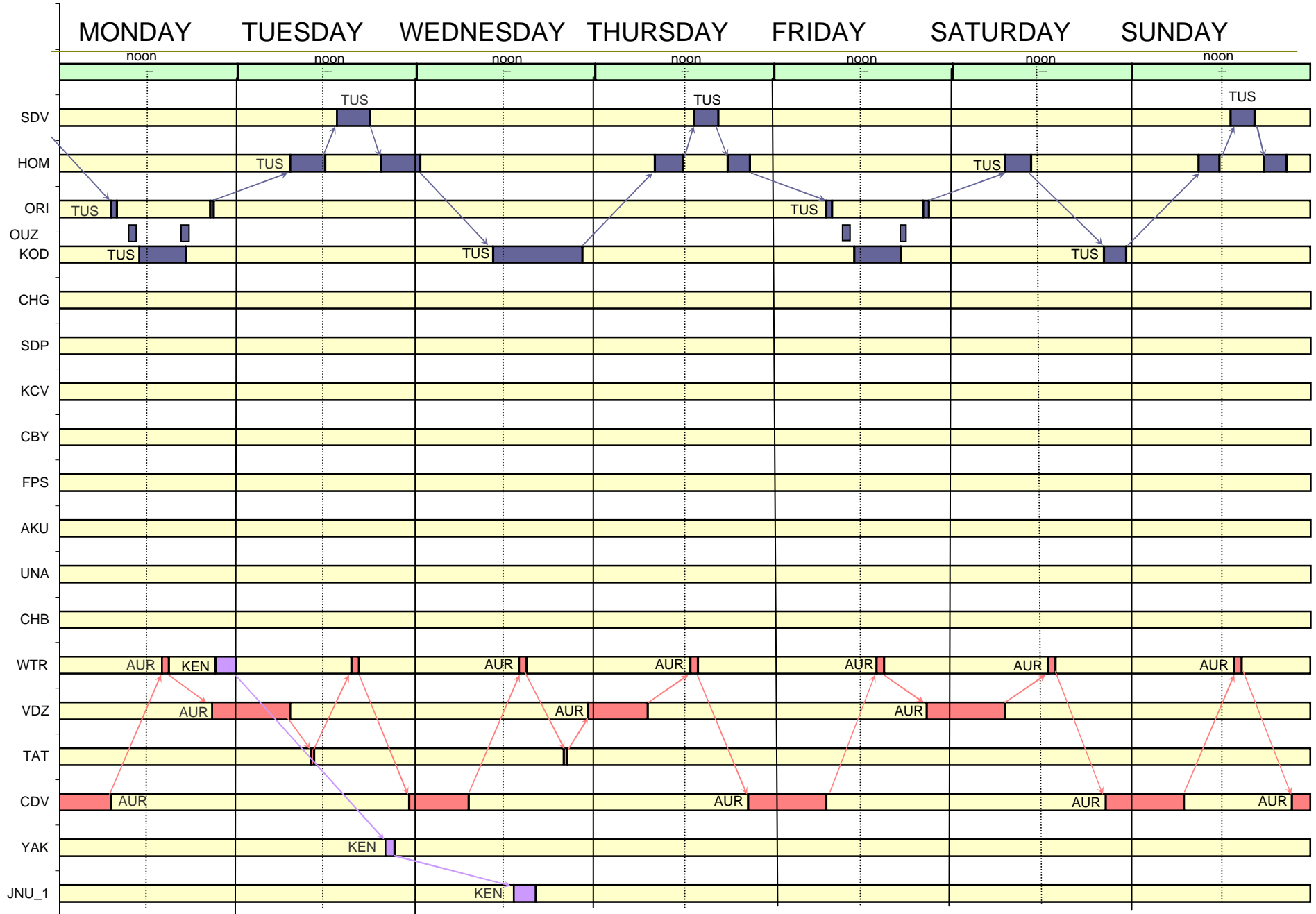
Please review the above Community Calendar of Events and comment on any events that are missed for your community. Schedule patterns may be changed if warranted to be able to provide service to/from the events.

DRAFT

Summer 2022 SW-PWS Wk 1

DRAFT

Revised 07-05-2021

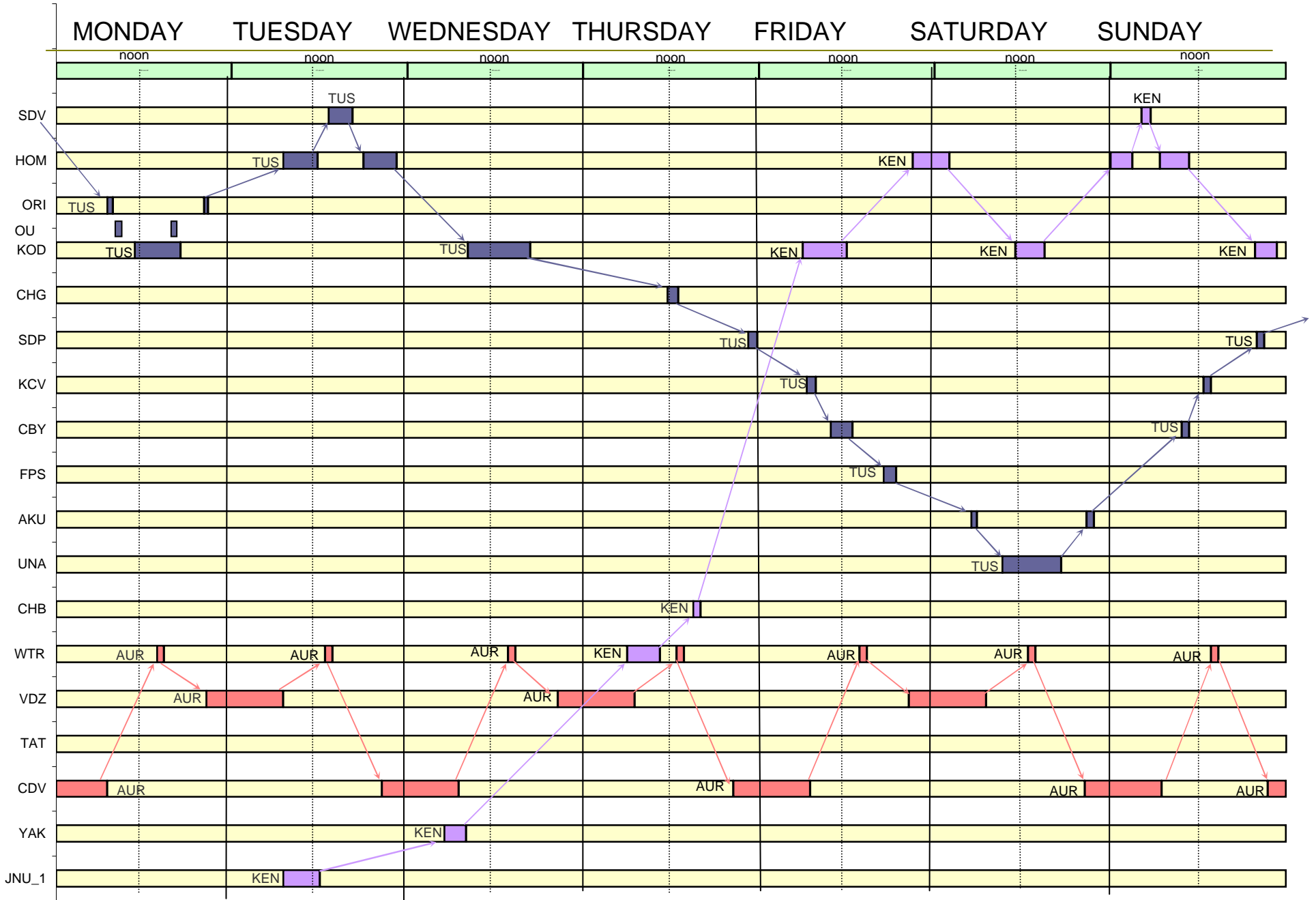


DRAFT

Summer 2022 SW-PWS Wk 2

DRAFT

Revised 07-05-2021

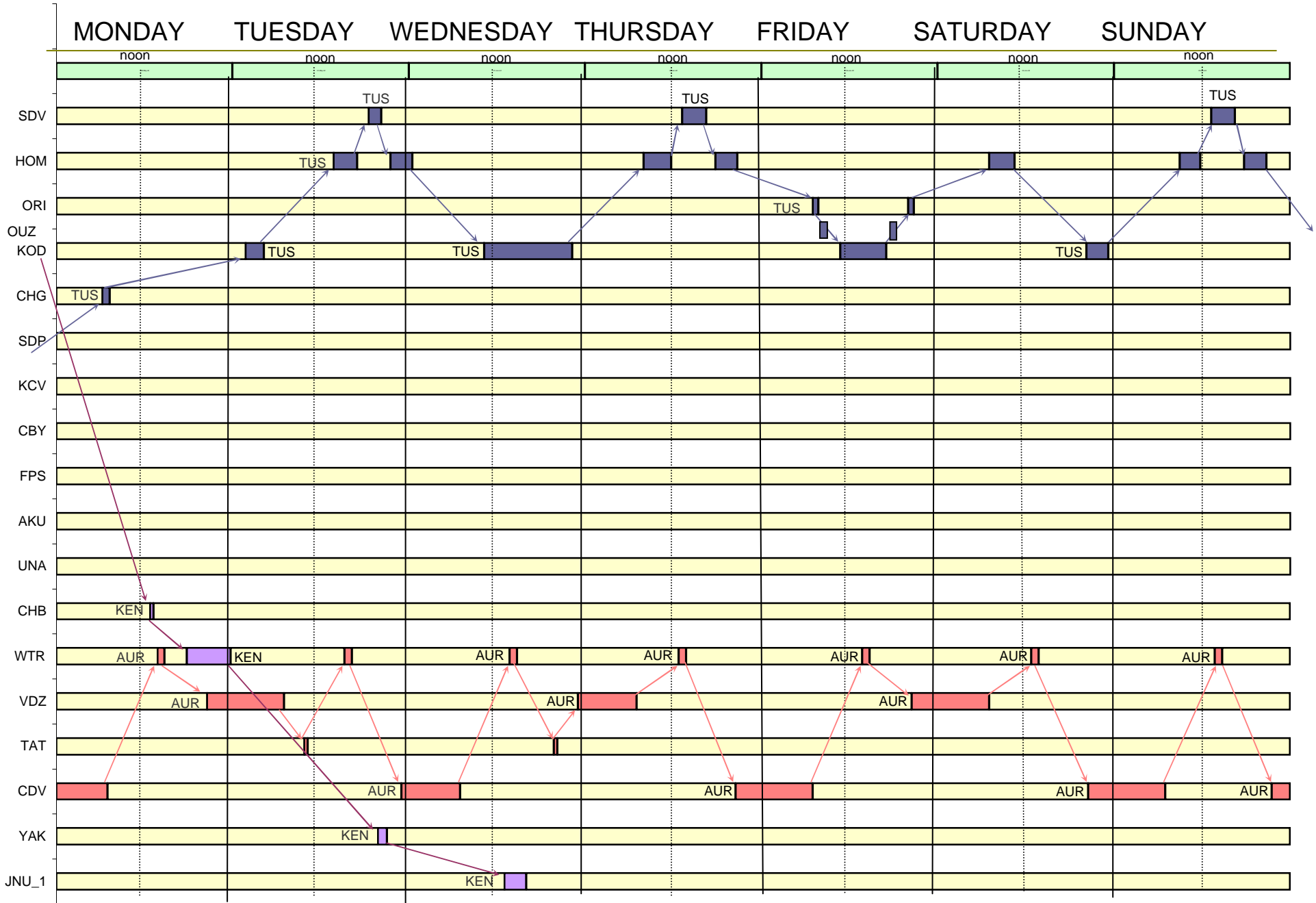


DRAFT

Summer 2022 SW-PWS Wk 3

DRAFT

Revised 07-05-2021

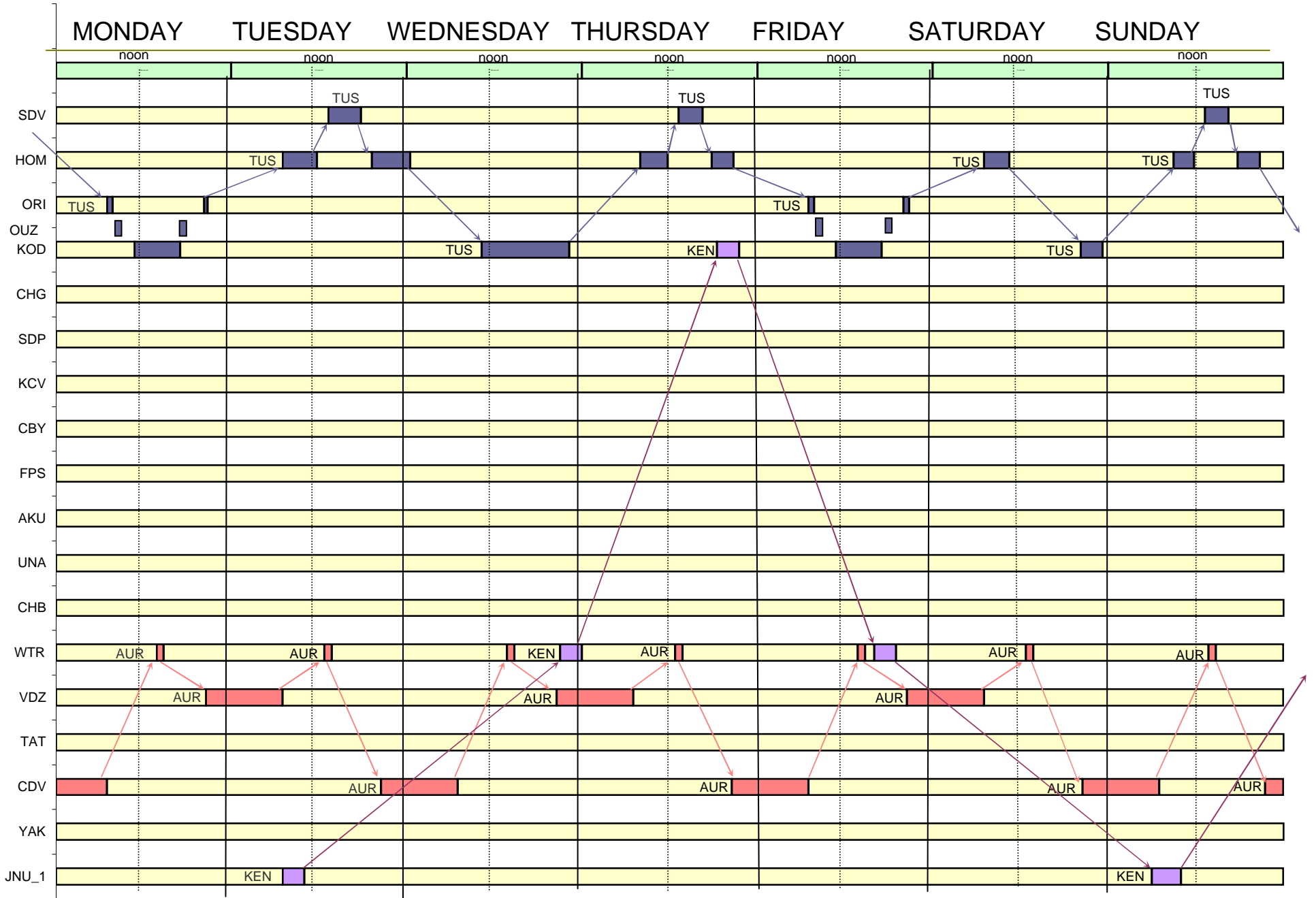


DRAFT

Summer 2022 SW-PWS Wk 4

DRAFT

Revised 07-05-2021



DRAFT

Summer 2022 PWS May

DRAFT

Revised 07-05-2021

	MONDAY	TUESDAY	WEDNESDAY	THURSDAY	FRIDAY	SATURDAY	SUNDAY
	noon	noon	noon	noon	noon	noon	noon
SDV							
HOM							
ORI							
OU							
KOD							
CHG							
SDP							
KCV							
CBY							
FPS							
AKU							
UNA							
CHB							
WTR	AUR	AUR	AUR	AUR	AUR		AUR
VDZ					AUR		AUR
TAT							
CDV	AUR	AUR	AUR	AUR	AUR	AUR	AUR
YAK							
JNU_1							

Summer 2022 SW/SC Community Events

rev 07-30-21

MAY

PWS Shorebird Festival	CDV
Kodiak Crab Festival	KOD

JUNE

Copper River Nouveau	CDV
----------------------	------------

JULY

Copper River Wild Festival	CDV
----------------------------	------------

AUGUST

SEPTEMBER

-

Please review the above Community Calendar of Events and comment on any events that are missed for your community. Schedule patterns may be changed if warranted to be able to provide service to/from the events.